



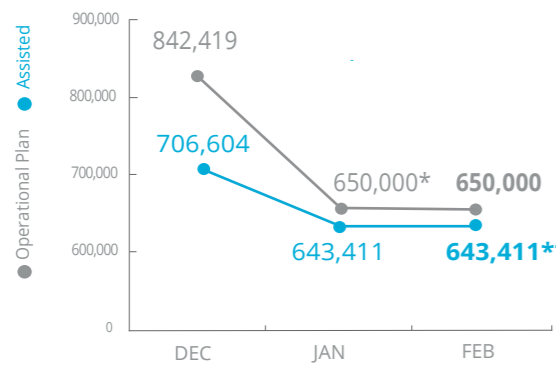
World Food Programme

Emergency Dashboard | April 2019

Nigeria

PEOPLE ASSISTED

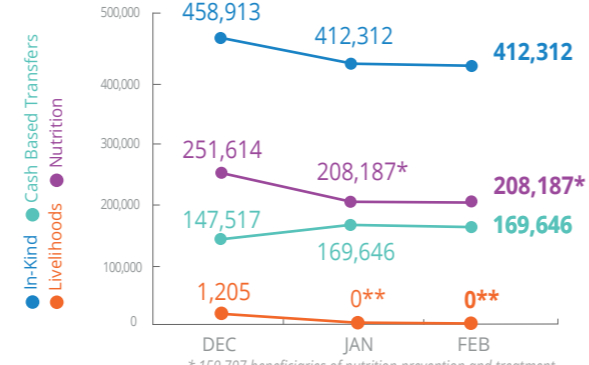
Borno, Yobe and Adamawa States



*Operational Plan revised under the Country Strategic Plan
** Two-month rations distributed in Jan to cover Jan and Feb needs

OPERATIONAL PROFILE

by activity



* 159,797 beneficiaries of nutrition prevention and treatment and 48,400 of Multi-Sector Nutrition Prevention activities
** Preparatory activities are on-going.

FUNDING

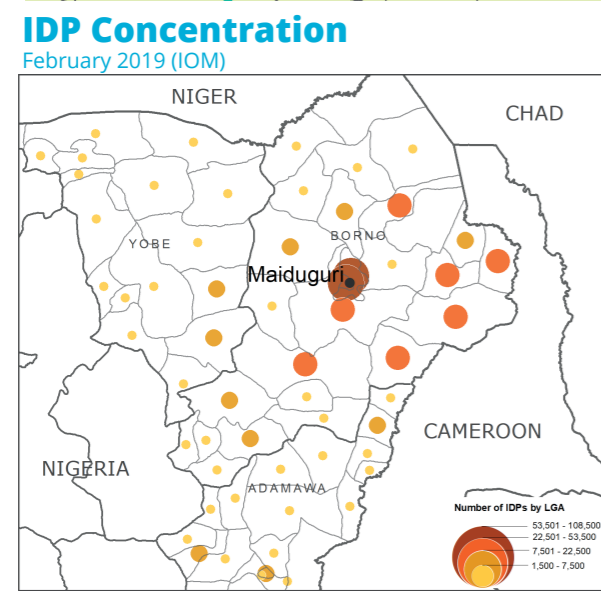
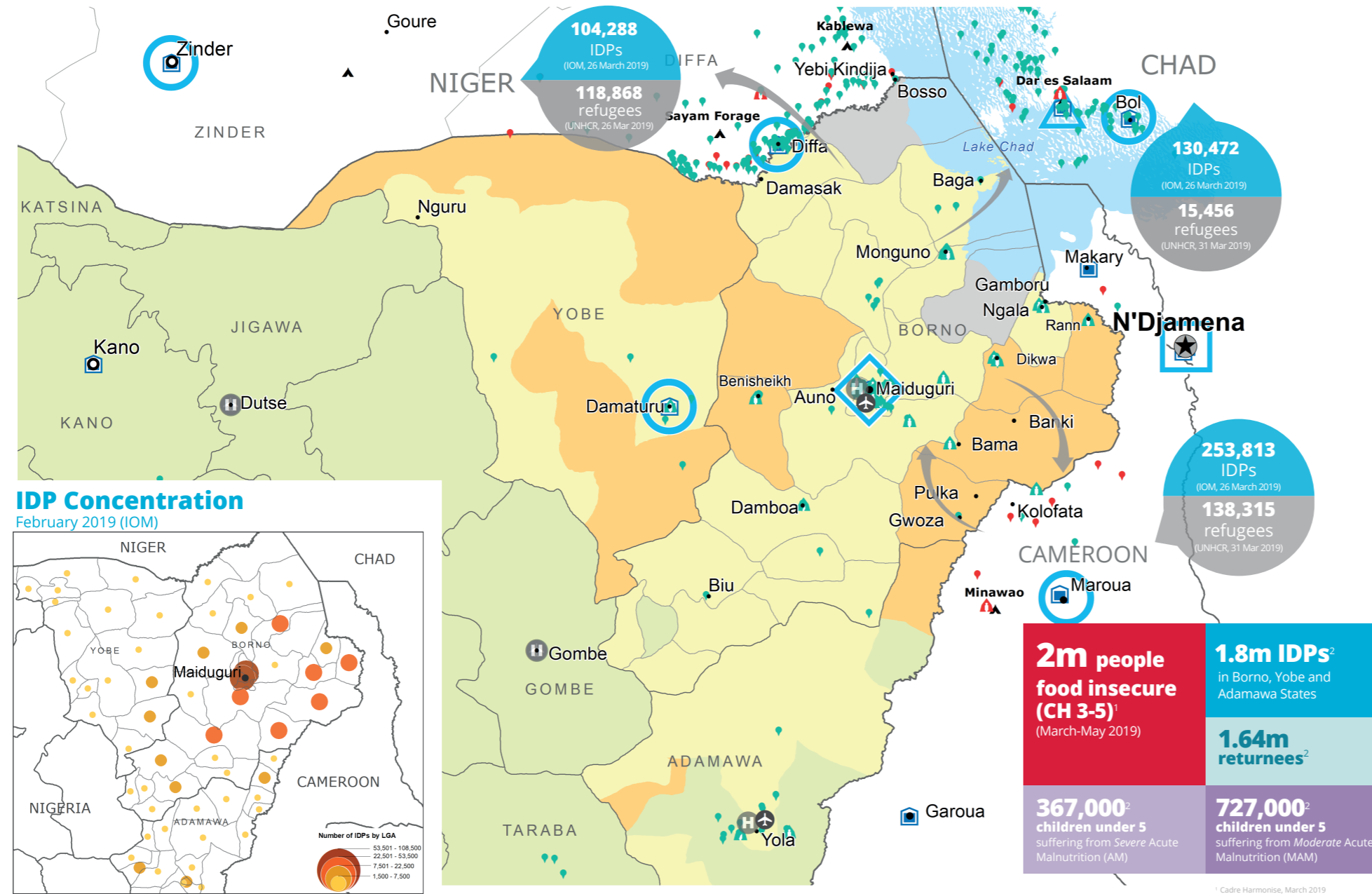
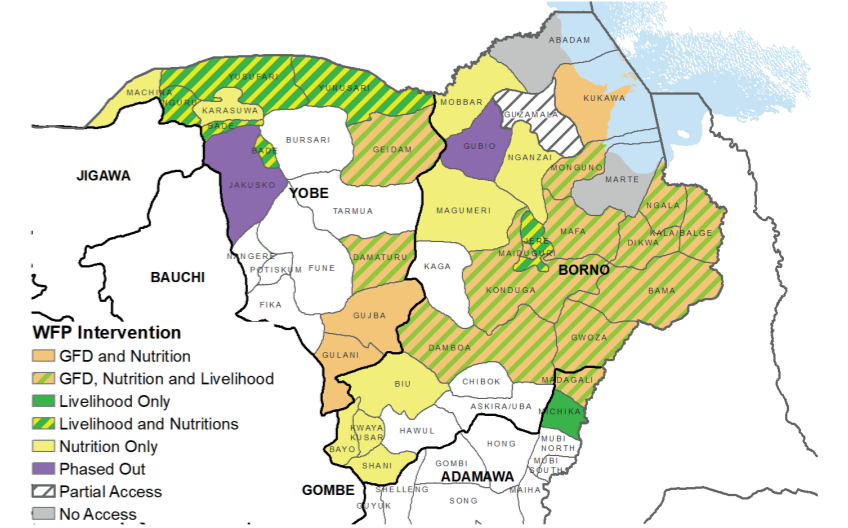
Nigeria Country Strategic Plan (CSP)

May - October 2019
Net funding requirement
USD 60.8m

2019 LEVEL 3 RESPONSE
REQUIREMENTS: USD 242.7m

WFP OPERATIONAL PRESENCE

GFD, NUTRITION AND LIVELIHOOD INTERVENTIONS IN ADAMAWA, BORNO AND YOBE STATES
January to September 2019



2m people food insecure (CH 3-5)¹
(March-May 2019)

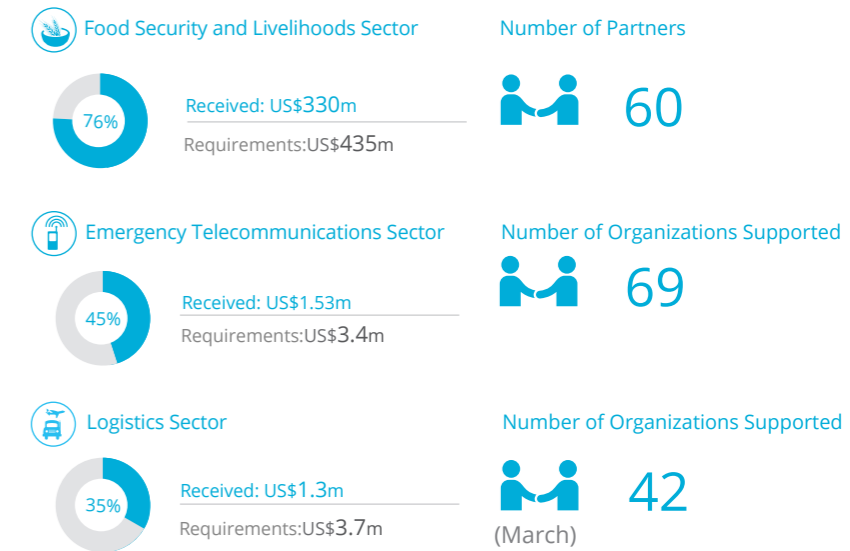
1.8m IDPs²
in Borno, Yobe and Adamawa States

1.64m returnees²

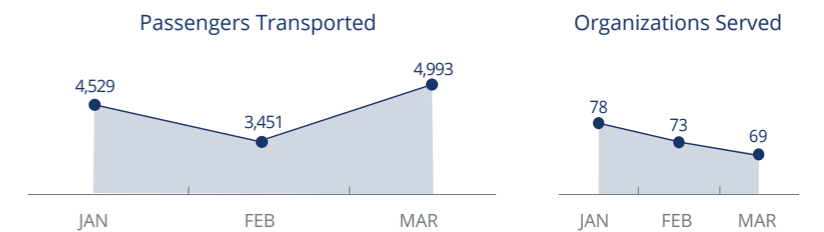
367,000² children under 5
suffering from Severe Acute Malnutrition (AM)

727,000² children under 5
suffering from Moderate Acute Malnutrition (MAM)

WFP-LED AND SUPPORTED SECTORS



UN Humanitarian Air Service (UNHAS)



SOURCES: OCHA FTS AND CLUSTERS, 25 APRIL 2019

WFP LEVEL 3 EMERGENCY

SINCE 11 AUGUST 2016

For more information, see the SITUATION REPORT and COUNTRY BRIEF
www.wfp.org/countries/nigeria

2A Regional Emergency Operation 200777
<http://documents.wfp.org/stellent/groups/public/documents/ep/WFP284303.pdf>

Produced by the WFP Operations Centre (OPSCEN) jointly with Country Office and Regional Bureau Dakar. This dashboard is based on best available information at the time of production. Future updates may vary as new information becomes available.

- IPC Food Security Classification**
(Projected October - December 2018)
- No data
 - Minimal (Phase 1)
 - Stressed (Phase 2)
 - Crisis (Phase 3)
 - Emergency (Phase 4)
 - Famine (Phase 5)
- Country Office**
- Country Office
 - Area Office
 - Sub Office
 - Field Office
- UNHAS Connection**
- Ad-Hoc Fixed-Wing Destination
 - Ad-Hoc Rotary-Wing Destination
 - Warehouse
- IDP Camp**
- IDP Camp
 - IDP Location
- Refugee Camp**
- Refugee Camp
 - Refugee Location
- National Capital**
- National Capital
 - Major Town
 - Intermediate Town
 - Small town
- International Boundary**
- International Boundary
 - Province boundary
 - River

Sources: WFP, UNGIWI, GAUL, GLCSC, OCHA, UNHCR.

The designations employed and the presentation of material in the map(s) do not imply the expression of any opinion on the part of WFP concerning the legal or constitutional status of any country, territory, city or sea, or concerning the delimitation of its frontiers or boundaries.
© World Food Programme 2018.

INTERNAL USE ONLY