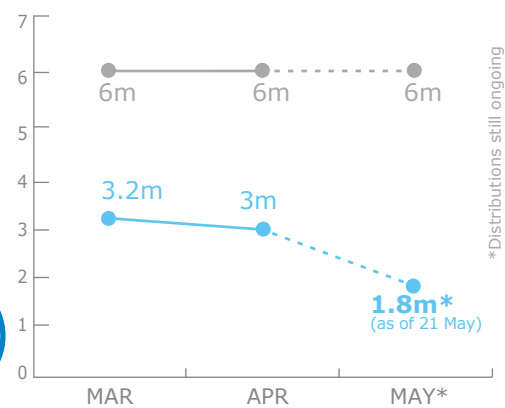


## PEOPLE ASSISTED

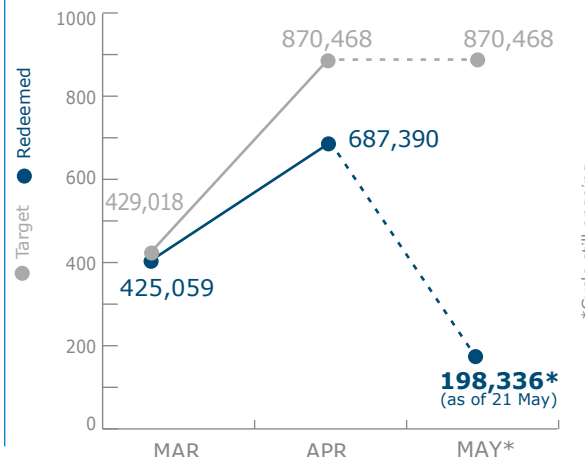
Emergency Operation 201068



### PEOPLE ASSISTED THROUGH FOOD DISTRIBUTIONS

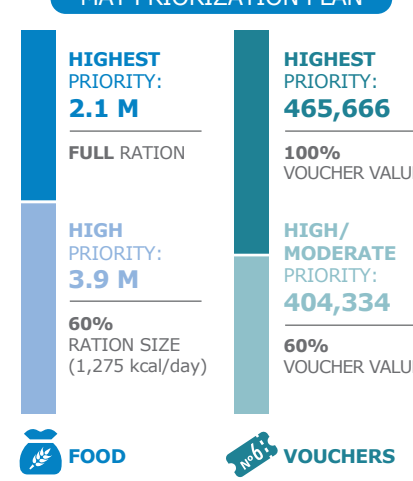


### PEOPLE ASSISTED THROUGH COMMODITY VOUCHERS



## PEOPLE TARGETED

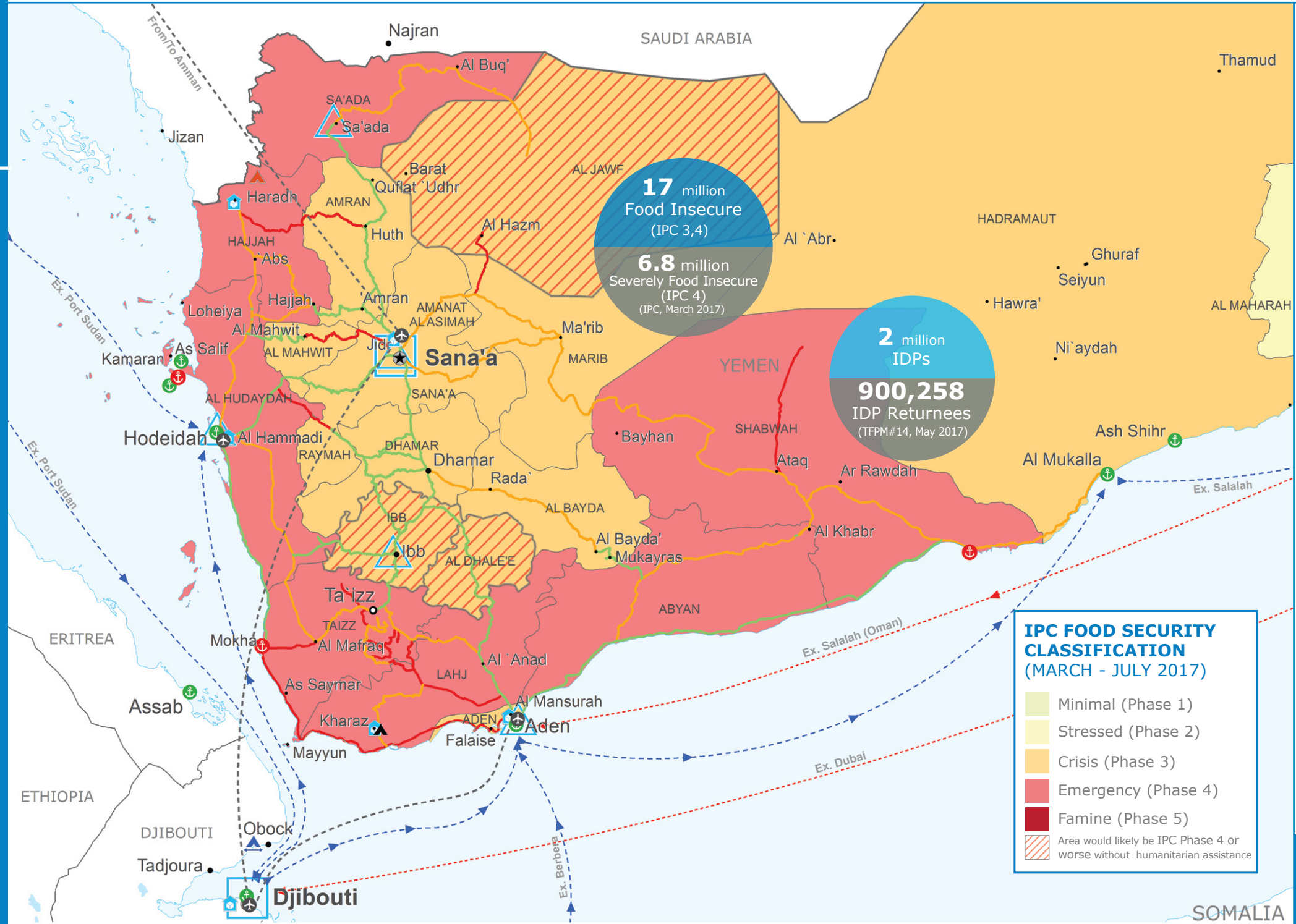
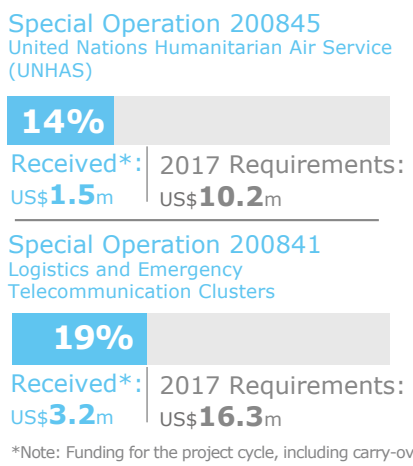
Emergency Operation 201068



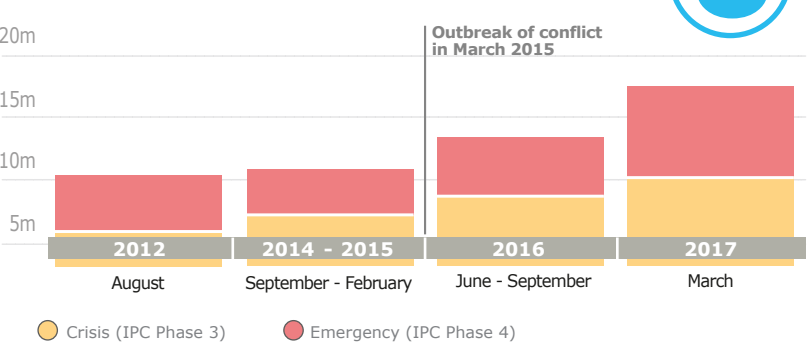
## FUNDING



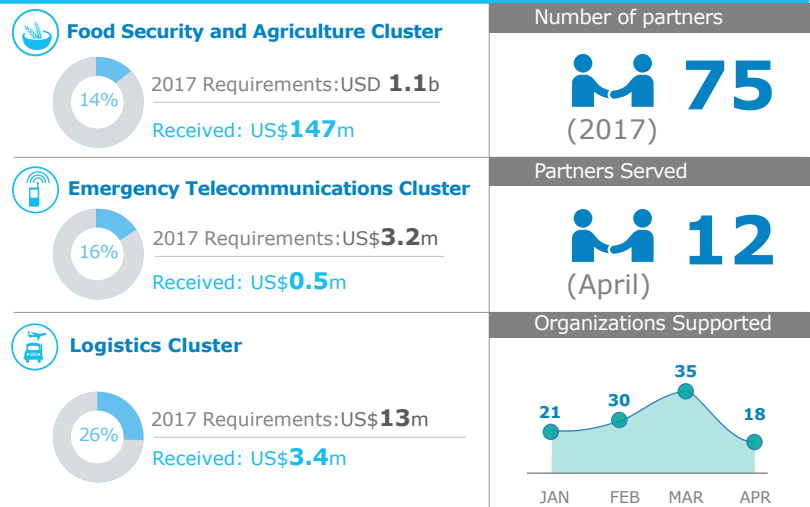
### 2017 PROJECT RESOURCES



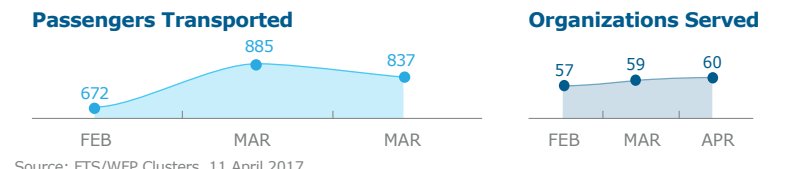
## HISTORICAL FOOD INSECURITY (IPC)



## WFP LED & CO-LED CLUSTERS



## UN Humanitarian Air Service (UNHAS)



## WFP LEVEL 3 EMERGENCY

SINCE 03 JULY 2015 IASC LEVEL 3 (SINCE 01 JULY 2015)  
For more information, see the **SITUATION REPORT** and **COUNTRY BRIEF** [www.wfp.org/countries/yemen](http://www.wfp.org/countries/yemen)



- Country Office
- Field Office
- Warehouse
- IDP Camp
- Refugee Camp
- Transit Camp
- Sea Route Open
- Sea Route Closed
- UNHAS Connection
- UNHAS Route
- Port Operational
- Port With Restricted Access
- Port Closed
- Road Status
- Road Open
- Road With Restricted Access
- Closed Road
- National Capital
- Major Town
- Intermediate Town
- Small Town
- International Boundary
- Governorate Boundary

Sources: WFP, UNGIWG, GAUL, GLCSC, OCHA, UNHCR, Logistics Cluster, 20 February 2017. The designations employed and the presentation of material in the map(s) do not imply the expression of any opinion on the part of WFP concerning the legal or constitutional status of any country, territory, city or sea, or concerning the delimitation of its frontiers or boundaries. © World Food Programme 2017

Emergency Operation 200890  
<http://documents.wfp.org/stellent/groups/public/documents/ep/WFP284303.pdf>

Produced by the WFP **Operations Centre (OPSCEN)** jointly with Country Office and Regional Bureau Cairo. This dashboard is based on best available information at the time of production. Future updates may vary as new information becomes available.