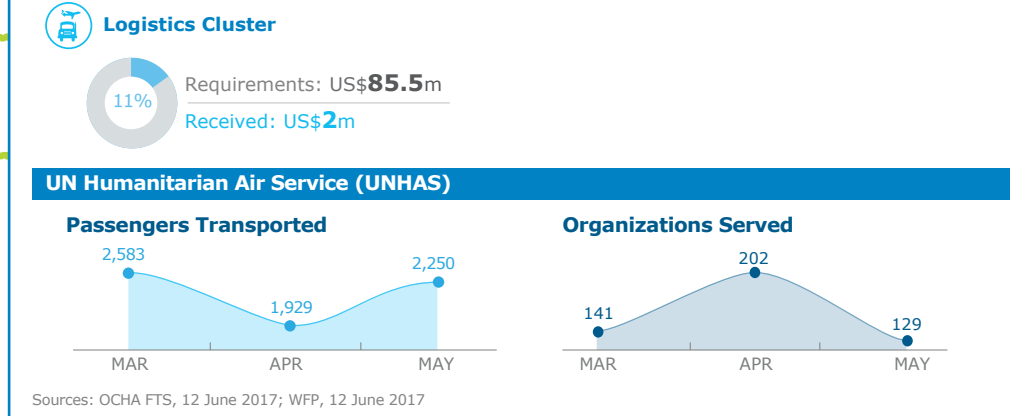
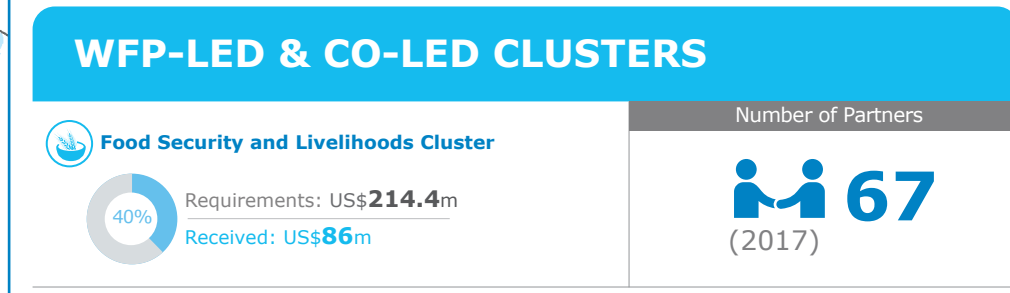


WFP assistance in Angola*:
23,000 people targeted through IR-EMOP 201076

*WFP operations in Angola implemented by UNHCR

Angola Immediate Response Emergency Operation (IR - EMOP) 201076 (May- August 2017):
US\$1.5m Total Requirements



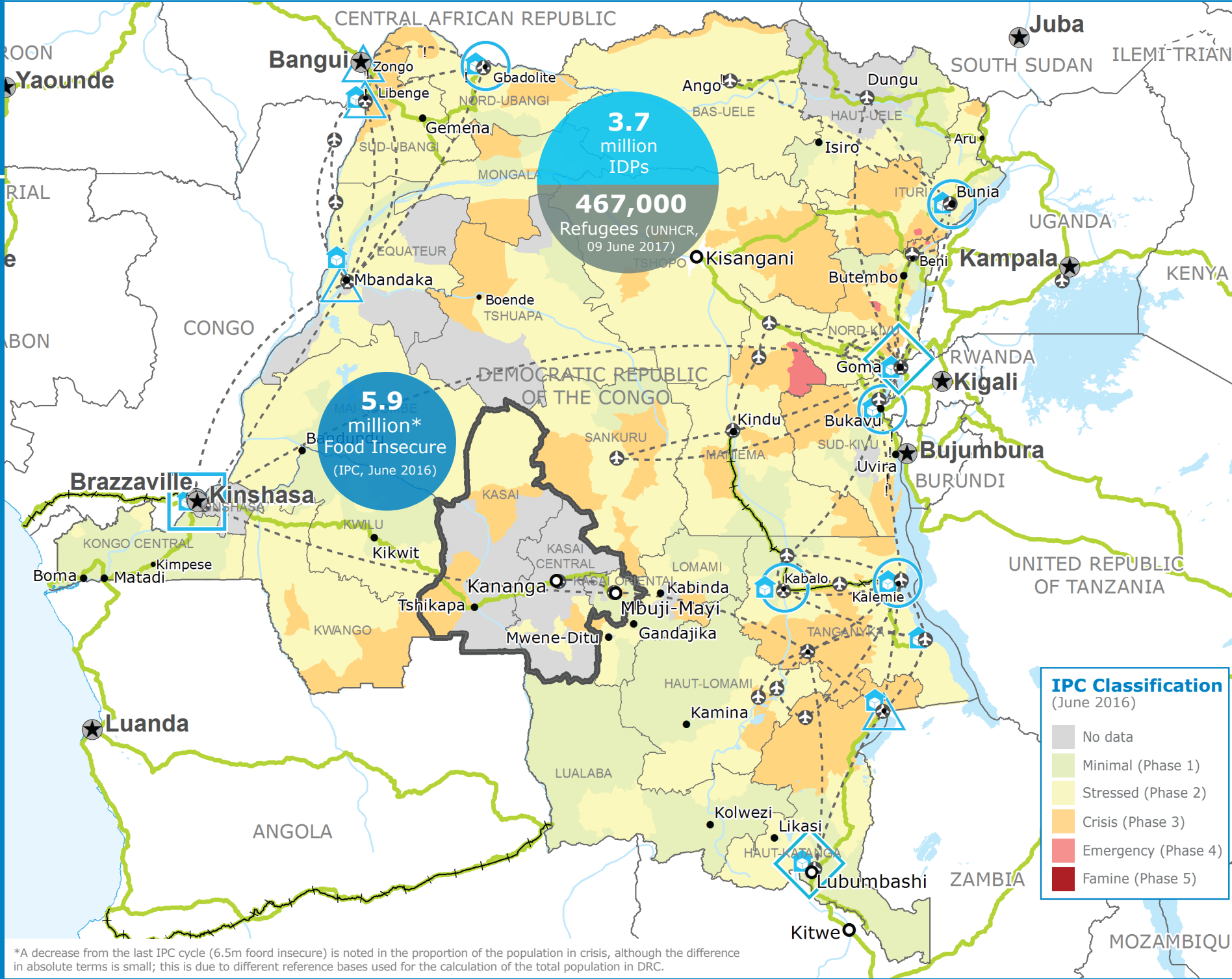
WFP LEVEL 2 EMERGENCY
SINCE 12 DECEMBER 2013

For more information, see the **SITUATION REPORT** and **COUNTRY BRIEF**
www.wfp.org/countries/congo-democratic-republic

2A PRRO 200832
<http://documents.wfp.org/stellent/groups/public/documents/ep/WFP284303.pdf>

Produced by the WFP Operations Centre (OPSCEN) jointly with Country Office and Regional Bureau Johannesburg

This dashboard is based on best available information at the time of production. Future updates may vary as new information becomes available.



*A decrease from the last IPC cycle (6.5m food insecure) is noted in the proportion of the population in crisis, although the difference in absolute terms is small; this is due to different reference bases used for the calculation of the total population in DRC.

Sources: WFP, UNGIWG, GAUL, GLCSC, OCHA, UNHCR, IPC
The designations employed and the presentation of material in the map(s) do not imply the expression of any opinion on the part of WFP concerning the legal or constitutional status of any country, territory, city or sea, or concerning the delimitation of its frontiers or boundaries. © World Food Programme 2017

Country Office	Field Office	UNHAS Connection	National Capital	International Boundary
Area Office	Warehouse	Road Supply Route	Major Town	Province boundary
Sub Office	Refugee Camp		Intermediate Town	River
			Small town	Surface Waterbody

