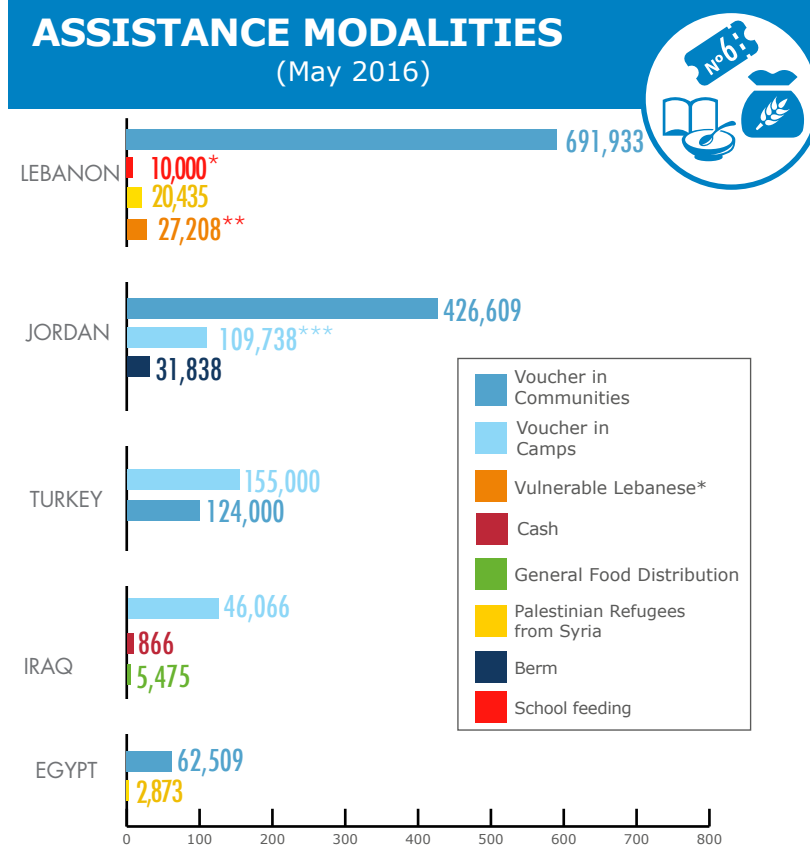
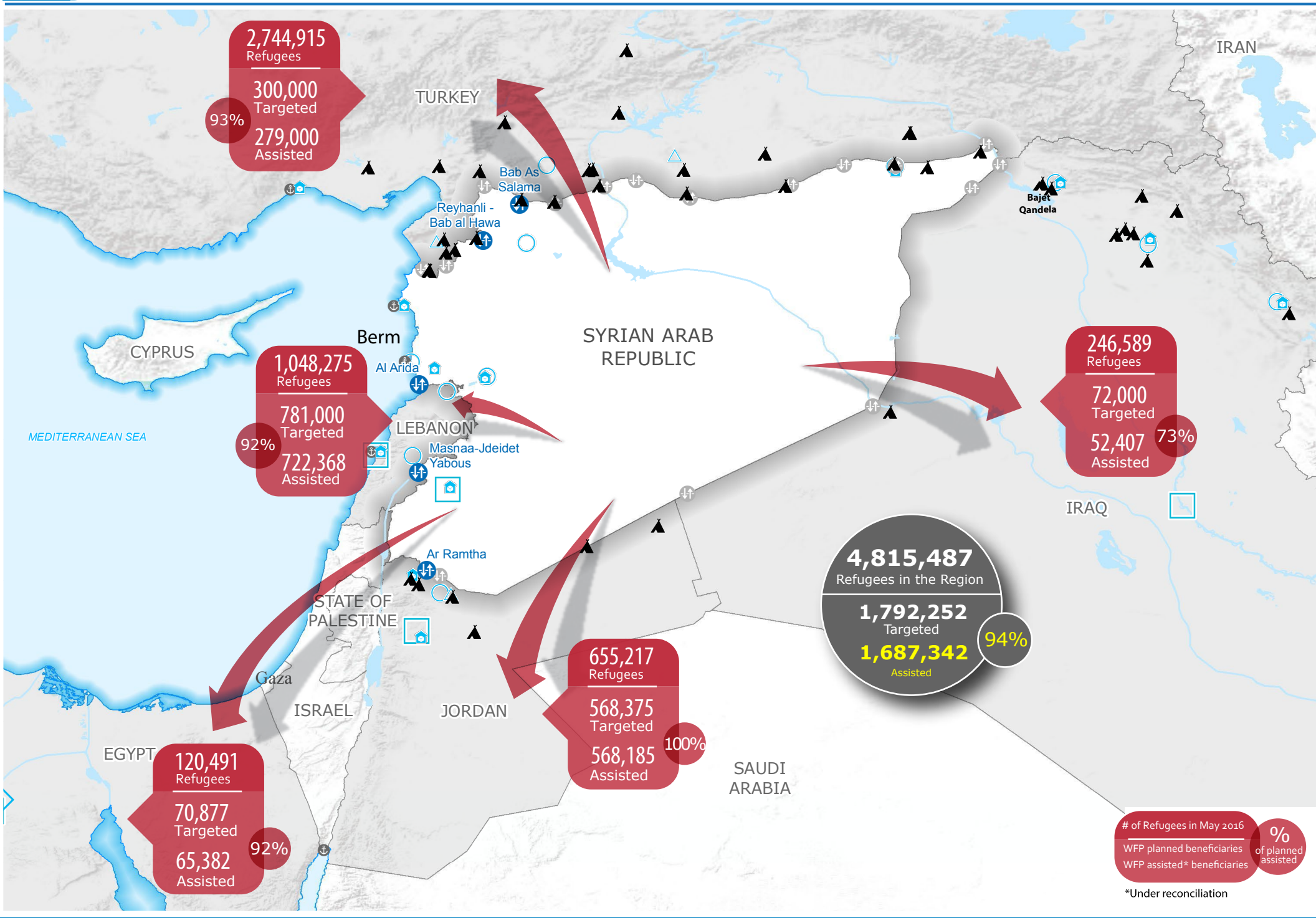
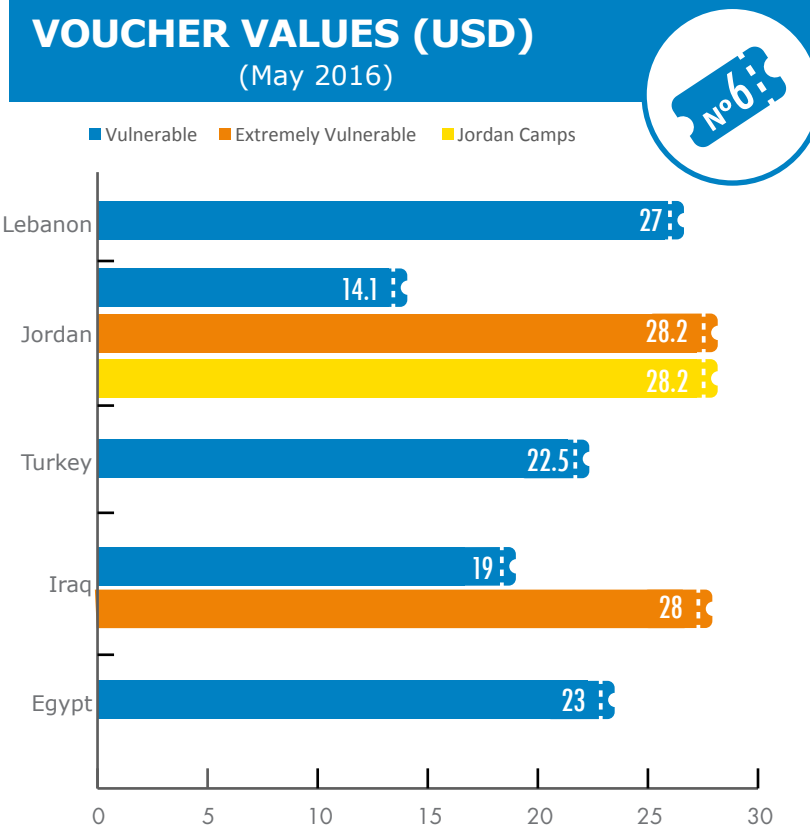
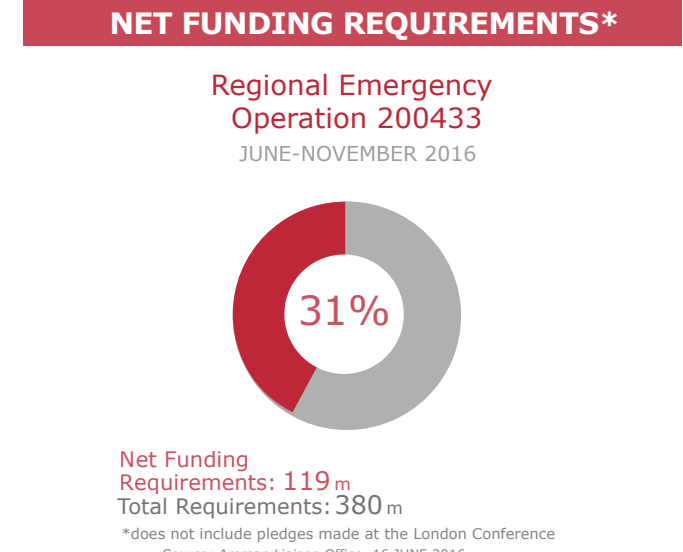
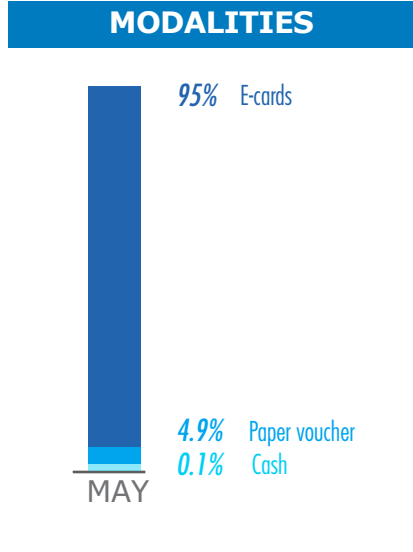
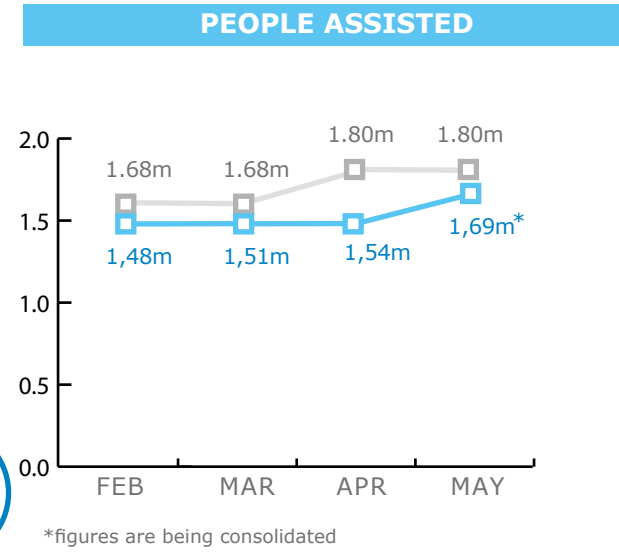


BENEFICIARIES

Regional Emergency Operation 200433



*5000 Lebanese and 5000 Syrian school children
**provision of technical assistance through the government's national poverty targeting programme (NPTT)
*** Include 919 beneficiaries are in transit centres.

WFP LEVEL 3 EMERGENCY
SINCE 14 DECEMBER 2012

IASC LEVEL 3 EMERGENCY
SINCE 15 JANUARY 2013

Check the **SITUATION REPORT**
<https://www.wfp.org/countries/syria>

Jointly produced by the WFP **Operations Centre (OPSCEN)** and the WFP Amman Liaison Office for the Syria Crisis.

This dashboard is based on best available information at the time of production. Future updates may vary as new information becomes available.

- Country Office
- Field Office
- Warehouse
- Refugee Camp
- Sub Office
- Open Border Crossing Point
- Port
- International boundary line

Sources: OCHA, WFP, GLCSC, UNGIWG, UNHCR, Geonames
The designations employed and the presentation of material in the map(s) do not imply the expression of any opinion on the part of WFP concerning the legal or constitutional status of any country, territory, city or sea, or concerning the delimitation of its frontiers or boundaries. ©World Food Programme 2015

This dashboard is based on best available information at the time of production. Future updates may vary as new information becomes available.

