

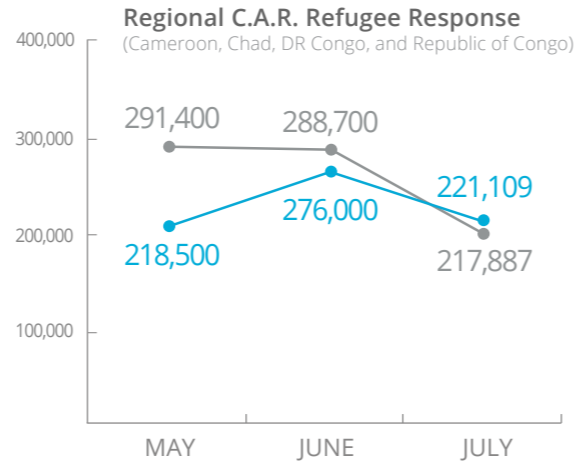
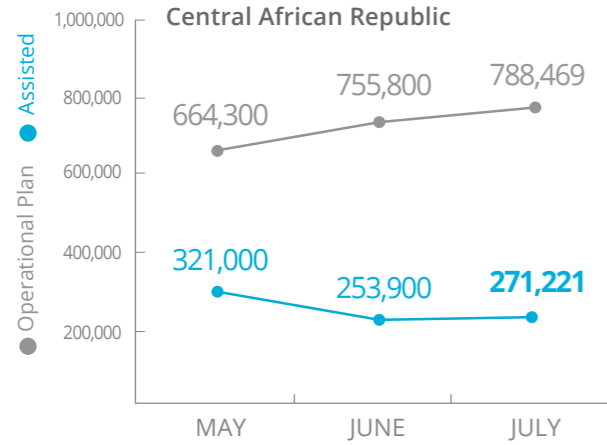


World Food Programme

Central African Republic

PEOPLE ASSISTED

Regional Emergency Operation 200799



SOURCE: WFP, 04 SEPTEMBER 2018

FUNDING

C.A.R. Interim Country Strategic Plan (2018-2020)

September 2018 – February 2019

US\$66.2m

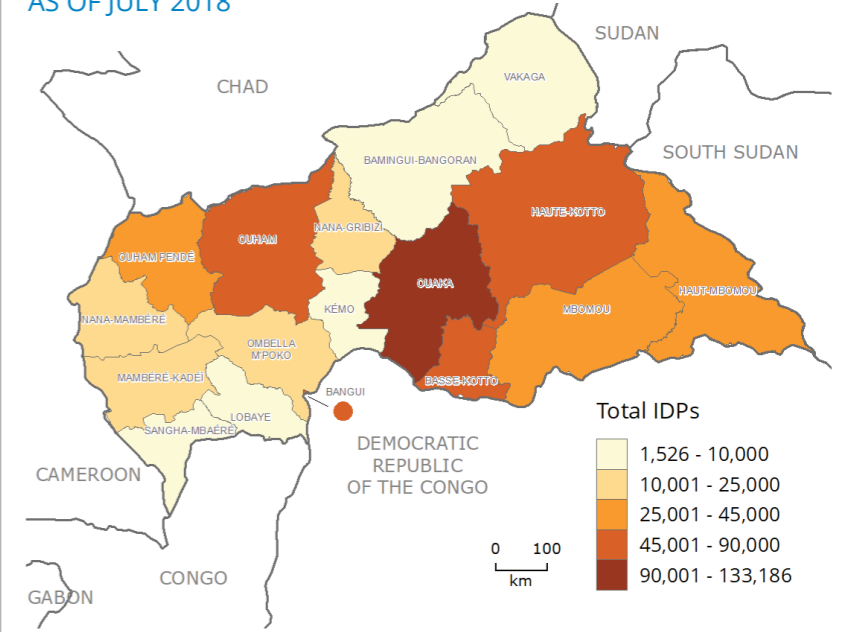
Net funding requirement



SOURCE: WFP, 30 AUGUST 2018

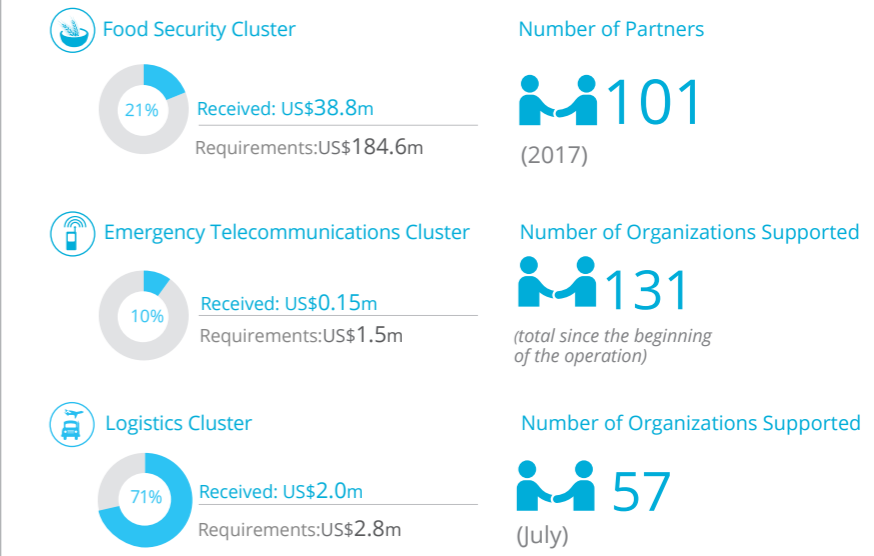
INTERNAL DISPLACEMENT

AS OF JULY 2018

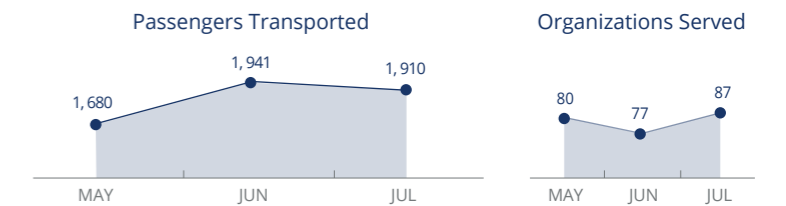


SOURCE: COMMISSION MOUVEMENT DE POPULATIONS, AUGUST 2018

WFP LED & SUPPORTED CLUSTERS



UN Humanitarian Air Service (UNHAS)



SOURCES: OCHA FTS, 31 AUGUST 2018; Clusters, 14 AUGUST 2018

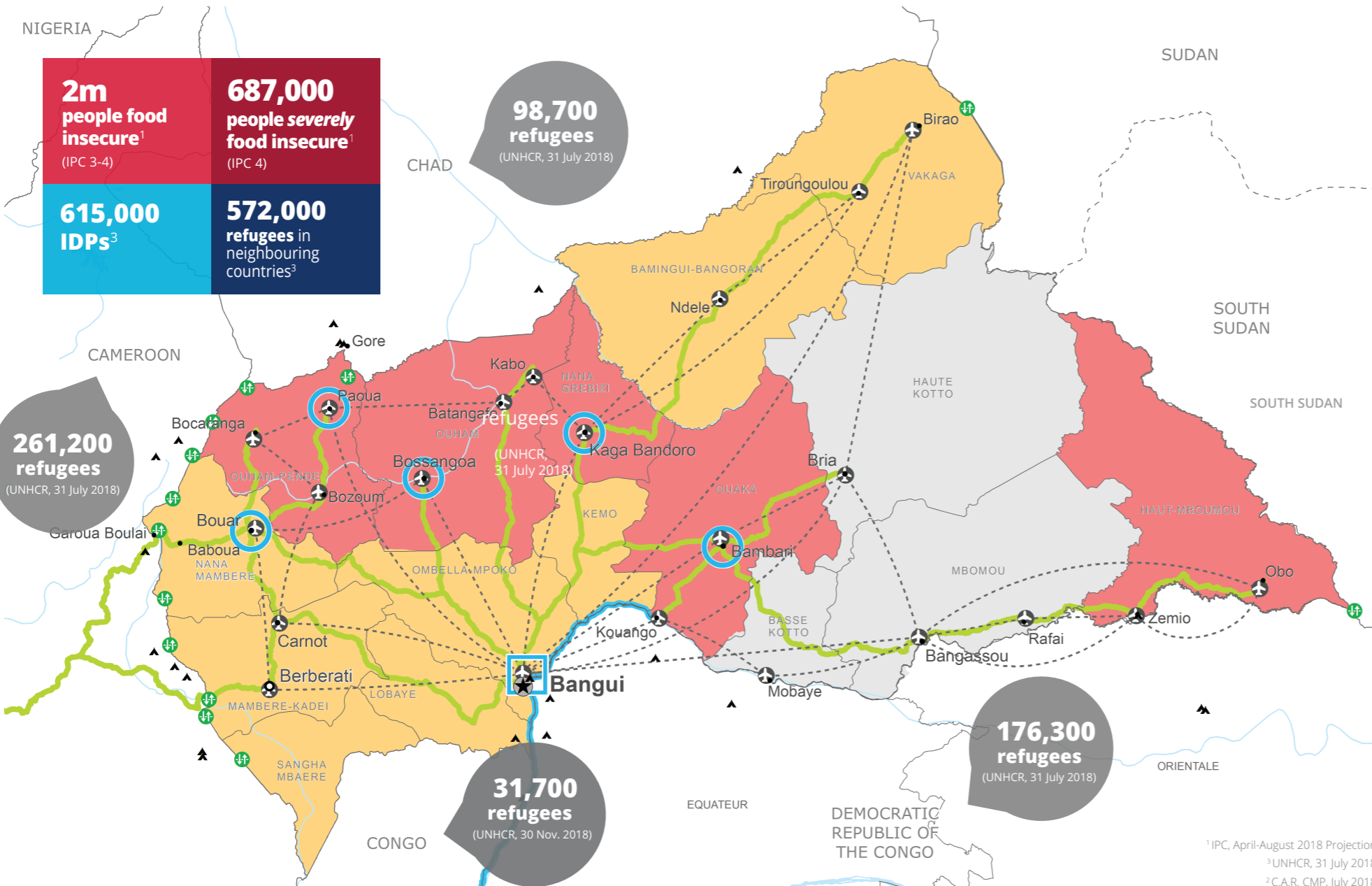
WFP LEVEL 2 EMERGENCY

SINCE 02 JUNE 2015

For more information, see the SITUATION REPORT and COUNTRY BRIEF www.wfp.org/countries/central-african-republic

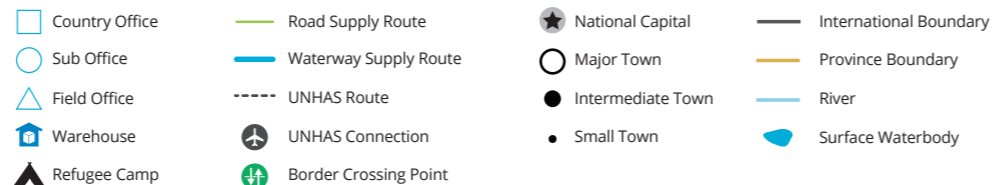
2A C.A.R Interim Country Strategic Plan (2018-2020) <http://documents.wfp.org/stellent/groups/public/documents/ep/WFP284303.pdf>

Produced by the WFP Operations Centre (OPSCEN) jointly with Country Office and Regional Bureau Dakar. This dashboard is based on best available information at the time of production. Future updates may vary as new information becomes available.



IPC Food Security Classification

April - August 2018 Projection



Sources: WFP, UNGIWG, GAUL, GLCSC, OCHA, UNHCR.

The designations employed and the presentation of material in the map(s) do not imply the expression of any opinion on the part of WFP concerning the legal or constitutional status of any country, territory, city or sea, or concerning the delimitation of its frontiers or boundaries. © World Food Programme 2018.