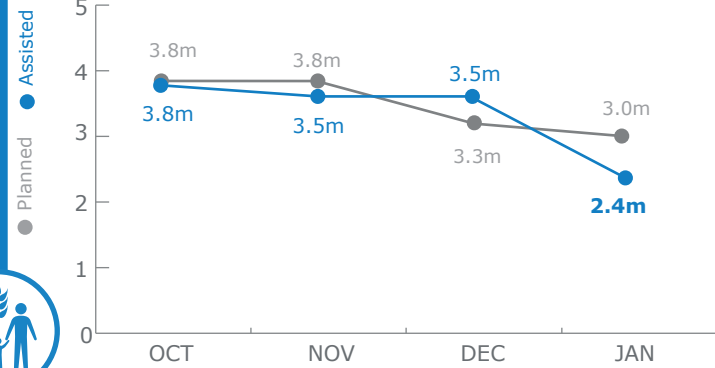


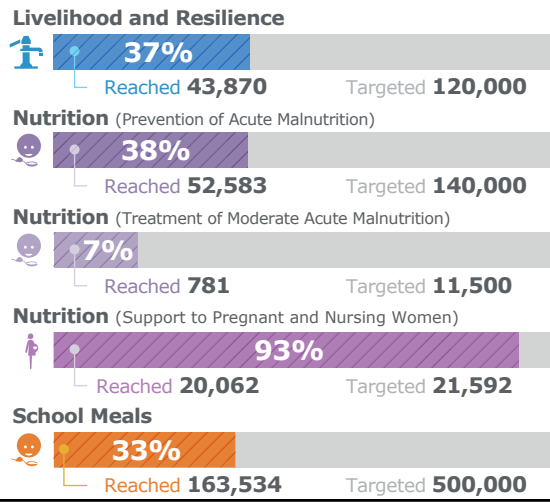
February 2018

### PEOPLE ASSISTED

Protracted Relief and Recovery Operation 200988



### OTHER ACTIVITIES - January 2018



### FUNDING

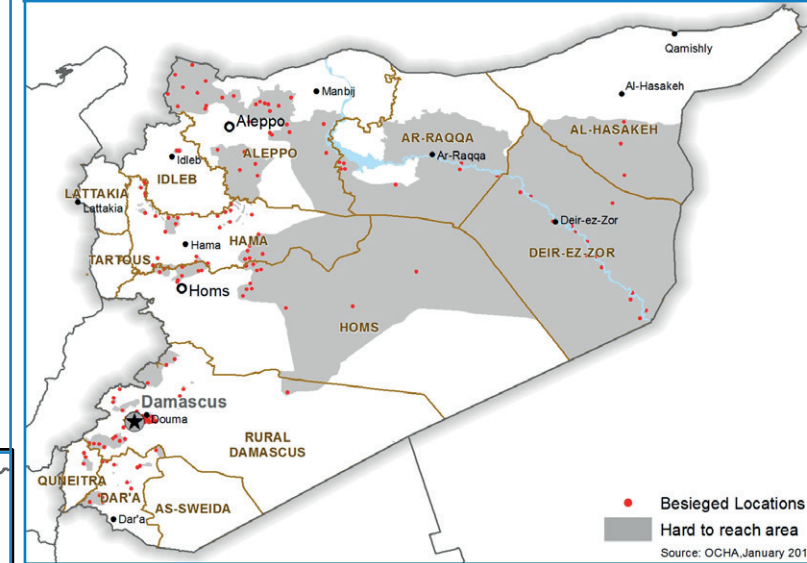
Syria Transitional Interim Country Strategic Plan (T-ICSP)



March - August 2018  
**US\$137m**  
Net Funding Requirements

Source: WFP, 15 February 2018

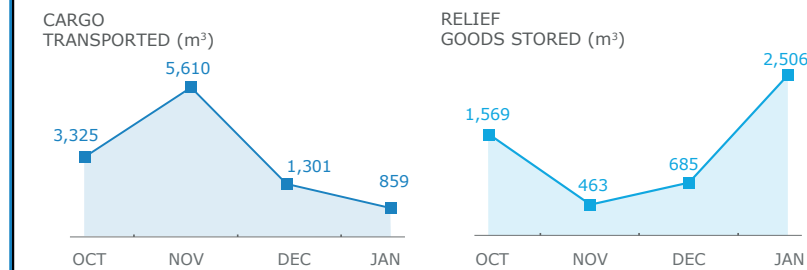
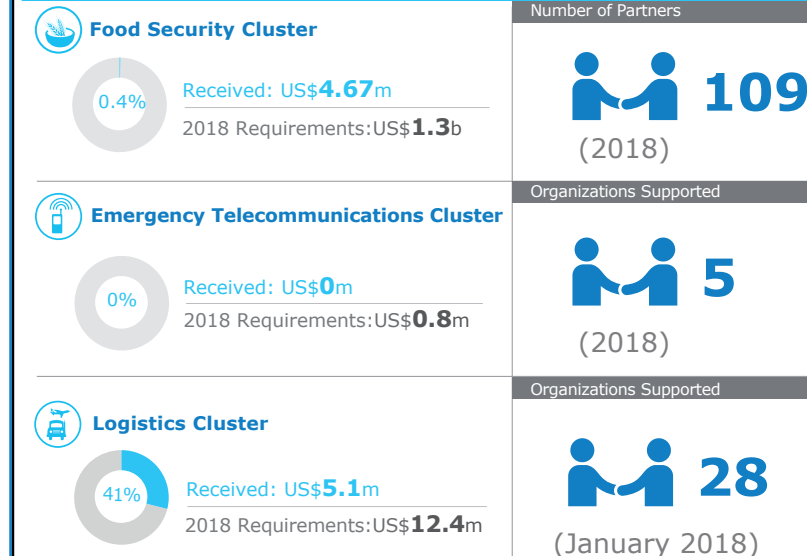
### BESIEGED AND HARD-TO-REACH AREAS



**2.9m** people in need in hard-to-reach areas (OCHA, 19 January 2018)

including **417,566** people in besieged locations (OCHA, 19 January 2018)

### WFP LED & CO-LED CLUSTERS



OCHA FTS, 27 February 2018; Clusters, 22 February 2018

### WFP LEVEL 3 EMERGENCY

SINCE 14 DECEMBER 2012

### IASC LEVEL 3 EMERGENCY

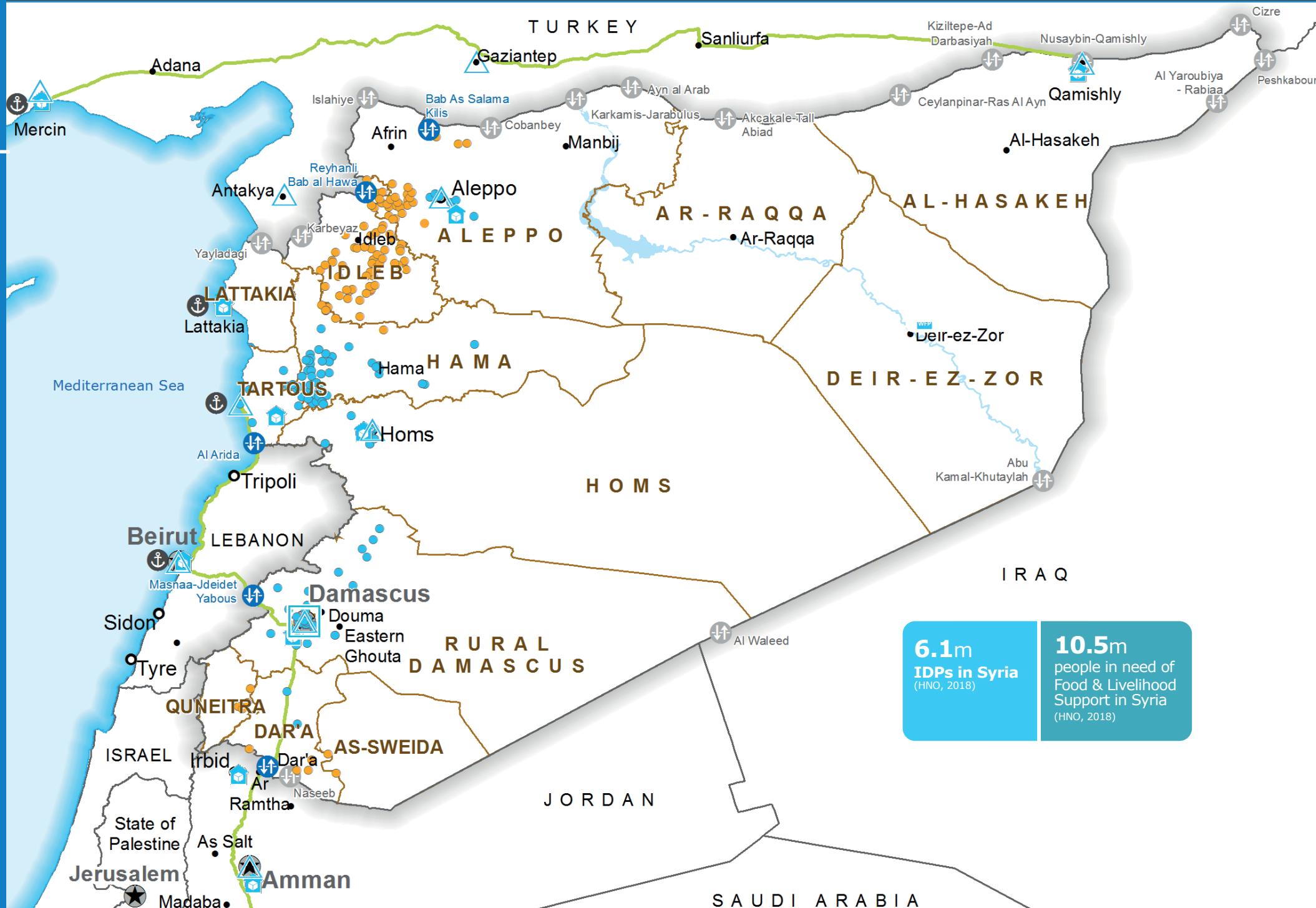
SINCE 15 JANUARY 2013

Check the **SITUATION REPORT**

<https://www.wfp.org/countries/syria>

Jointly produced by the WFP Operations Centre (OPSCEN), the WFP Syria Country Office and the WFP Cairo Regional Bureau

This dashboard is based on best available information at the time of production. Future updates may vary as new information becomes available.



**6.1m** IDPs in Syria (HNO, 2018)  
**10.5m** people in need of Food & Livelihood Support in Syria (HNO, 2018)

- Country Office
- Sub Office
- Field Office
- Road Supply Route
- Warehouse
- Open Border Crossing Point
- Sporadically Open Border Crossing
- International Boundary
- Governorate Boundary
- National Capital
- Major Town
- Intermediate Town
- Port
- Food Distribution Points (FDP) February 2018
  - FDP - Regular Deliveries
  - FDP - Cross-line Deliveries
  - FDP - Cross-border Deliveries

Sources: OCHA, WFP, GLCSC, UNGIWG, UNHCR, Geonames

The designations employed and the presentation of material in the map(s) do not imply the expression of any opinion on the part of WFP concerning the legal or constitutional status of any country, territory, city or sea, or concerning the delimitation of its frontiers or boundaries. ©World Food Programme 2018