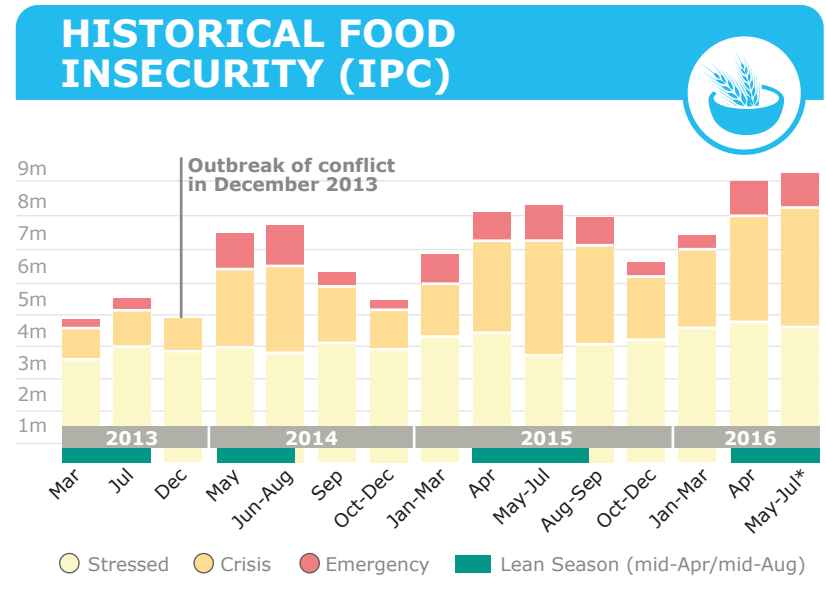


\*According to FAO, 16 November 2016 \*\*Refugee numbers are post 15 December 2013

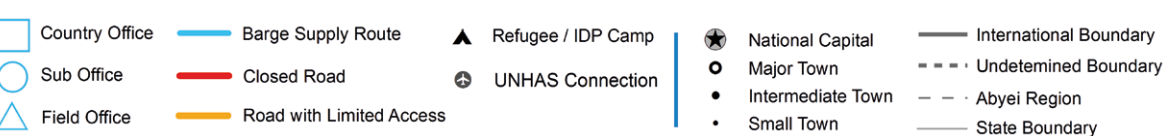


## WFP LEVEL 3 EMERGENCY

SINCE 23 DECEMBER 2013

For more information, see the **SITUATION REPORT** and **COUNTRY BRIEF** [www.wfp.org/countries/south-sudan](http://www.wfp.org/countries/south-sudan)

**2A** EMOP 200859 [documents.wfp.org/stellent/groups/public/documents/ep/WFP284303.pdf](http://documents.wfp.org/stellent/groups/public/documents/ep/WFP284303.pdf)



Produced by the WFP **Operations Centre (OPSCEN)** jointly with Country Office and Regional Bureau Nairobi

This dashboard is based on best available information at the time of production. Future updates may vary as new information becomes available.

**WFP SAYS NO to GENDER BASED VIOLENCE**

