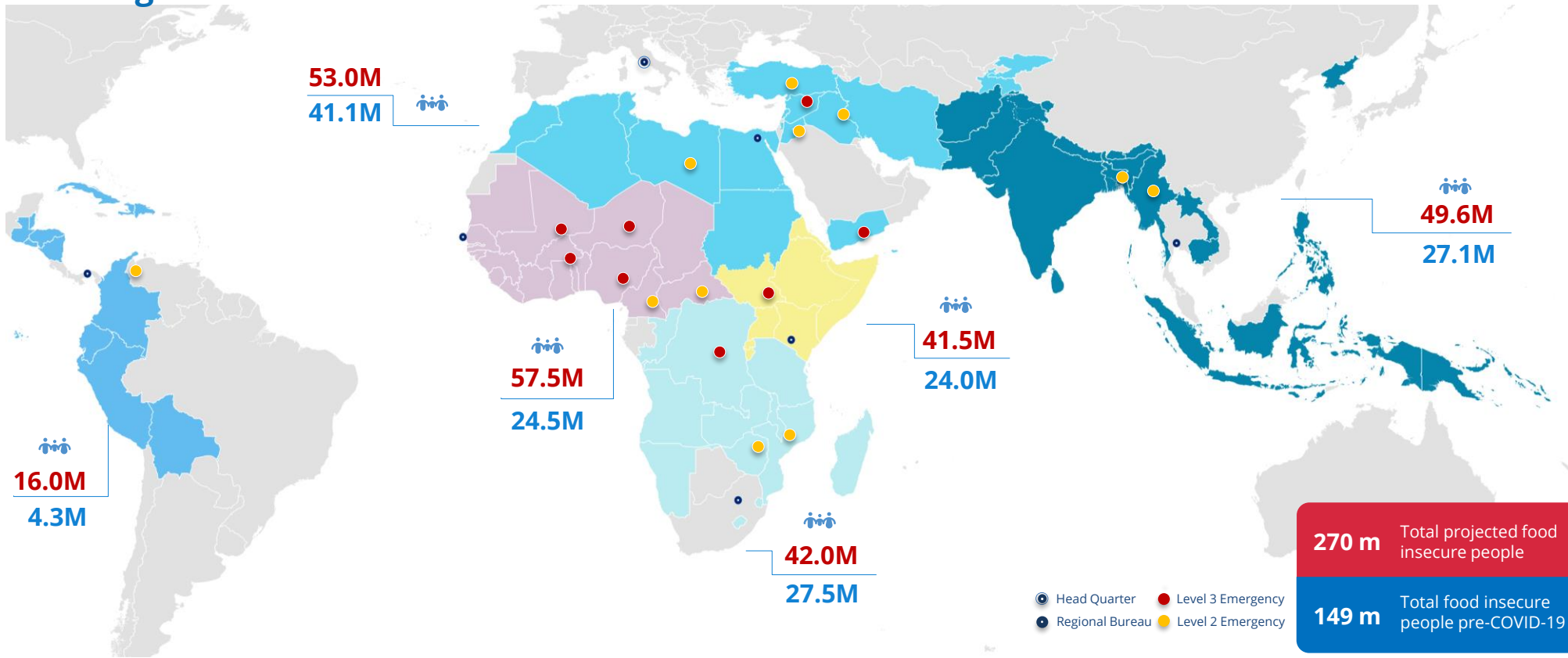
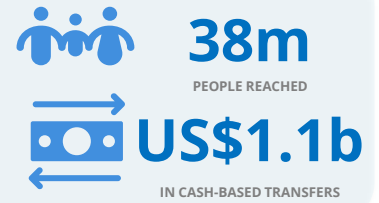


## WFP Regional Bureaux



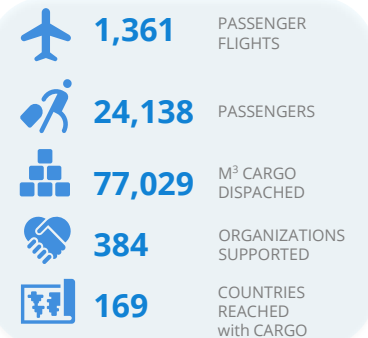
### GLOBAL OPERATIONS



### FUNDING REQUIREMENTS (October 2020 – March 2021)



### COMMON SERVICES



#### ASIA AND THE PACIFIC

#### EAST AFRICA

#### LATIN AMERICA AND THE CARIBBEAN

#### MIDDLE EAST, CENTRAL ASIA AND NORTH AFRICA

#### SOUTHERN AFRICA

#### WEST AND CENTRAL AFRICA

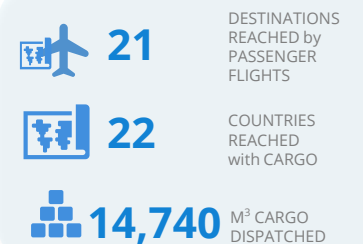
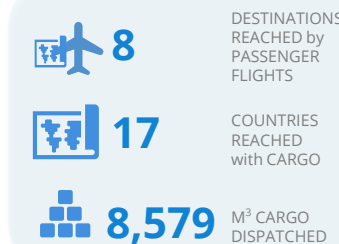
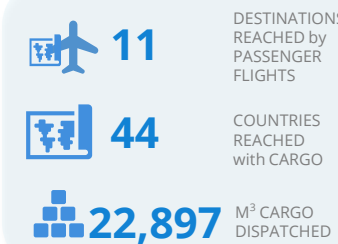
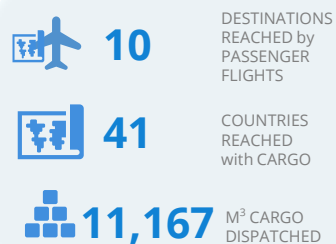
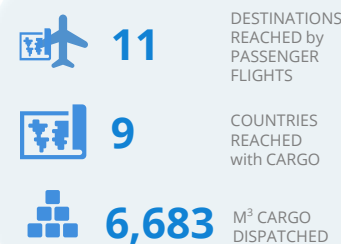
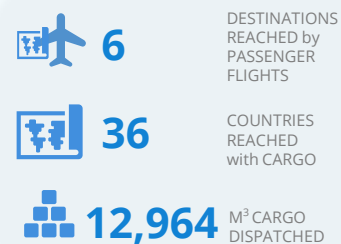
### REVISED INCREASE of PEOPLE RECEIVING ASSISTANCE as of September 2020



### FUNDING REQUIREMENTS US\$ (October 2020 – March 2021)



### COMMON SERVICES



**L3 EMERGENCY** since 27 March 2020

SOURCES: WFP, GLOBAL RESPONSE September 2020, and COMMON SERVICES, 13 October 2020. | For more info, contact [WFP.OPSCEN@wfp.org](mailto:WFP.OPSCEN@wfp.org)