



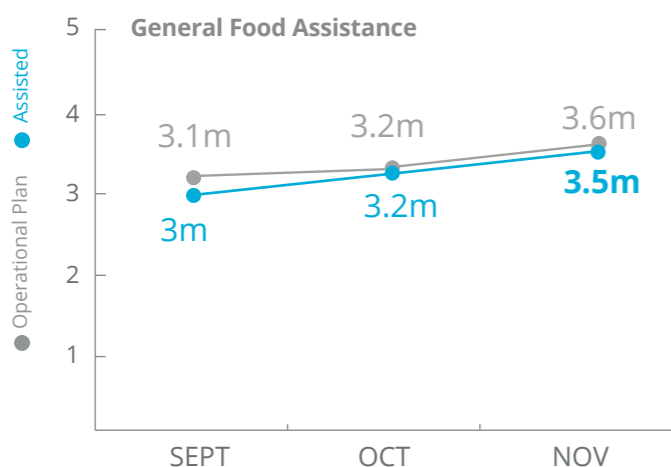
World Food Programme

Syria



PEOPLE ASSISTED

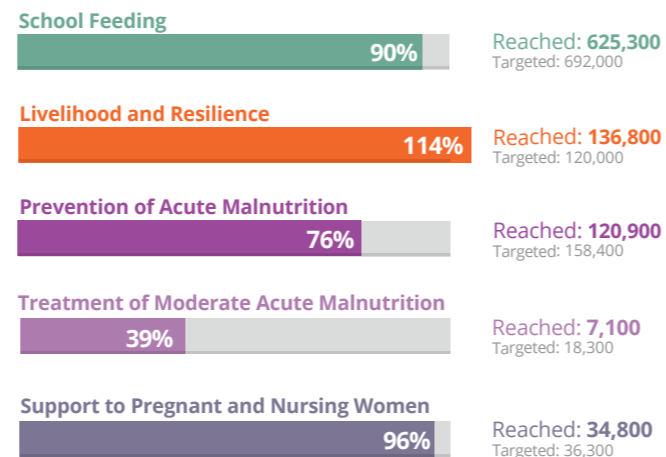
Syria Transitional Interim Country Strategic Plan



SOURCE: WFP, 20 DECEMBER 2018

OTHER ACTIVITIES

November 2018



FUNDING

Syria Transitional Interim Country Strategic Plan

January - June 2019

US\$116.6m

Net funding requirement

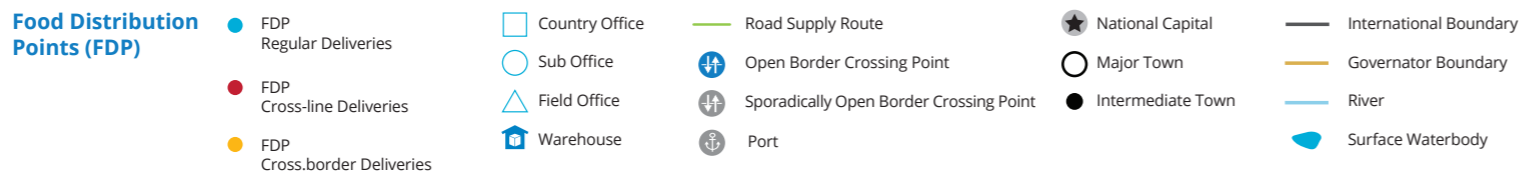
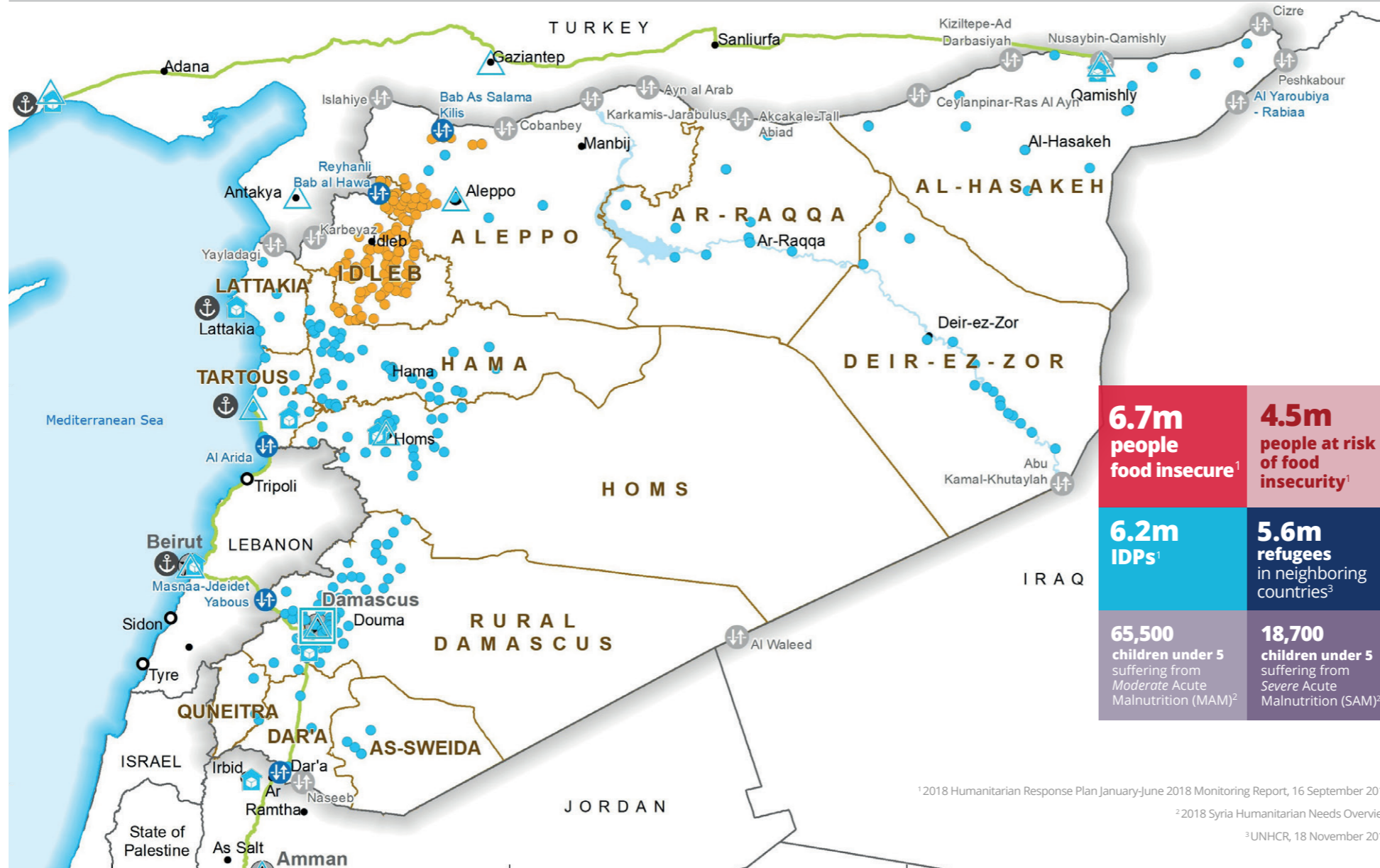
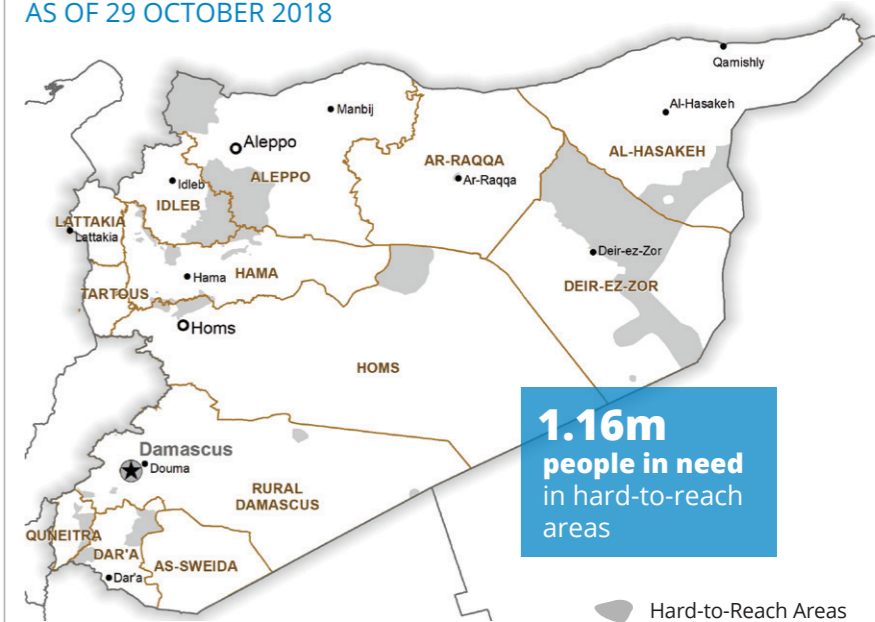
2018 LEVEL 3 RESPONSE



SOURCE: WFP, 20 DECEMBER 2018

HARD-TO-REACH AREAS

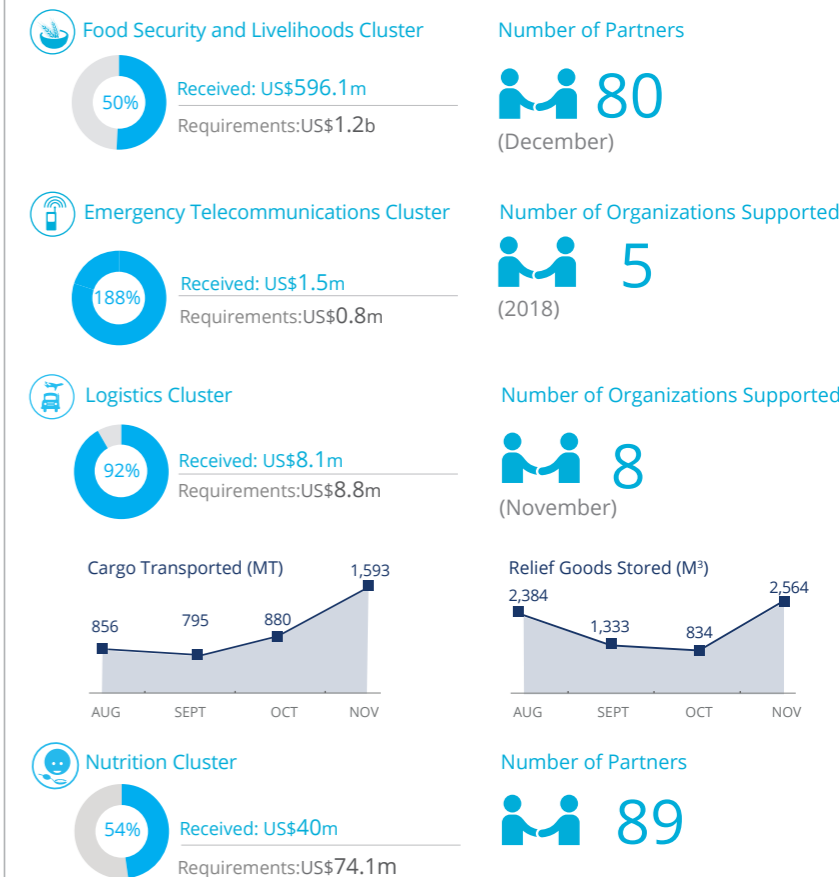
AS OF 29 OCTOBER 2018



¹2018 Humanitarian Response Plan January-June 2018 Monitoring Report, 16 September 2018
²2018 Syria Humanitarian Needs Overview
³UNHCR, 18 November 2018

Sources: OCHA, WFP, GLSCS, UNGIWG, UNHCR, Geonames.
 The designations employed and the presentation of material in the map(s) do not imply the expression of any opinion on the part of WFP concerning the legal or constitutional status of any country, territory, city or sea, or concerning the delimitation of its frontiers or boundaries.
 © World Food Programme 2018.

WFP-LED AND SUPPORTED CLUSTERS



WFP LEVEL 3 EMERGENCY

SINCE 14 DECEMBER 2012

IASC LEVEL 3 EMERGENCY SINCE 15 JANUARY 2013

For more information, see the SITUATION REPORT and COUNTRY BRIEF www.wfp.org/countries/syria

2A Syria Transitional Interim Country Strategic Plan
<http://documents.wfp.org/stellent/groups/public/documents/ep/WFP284303.pdf>

Produced by the WFP Operations Centre (OPSCEN) jointly with Country Office and Regional Bureau Cairo. This dashboard is based on best available information at the time of production. Future updates may vary as new information becomes available.