



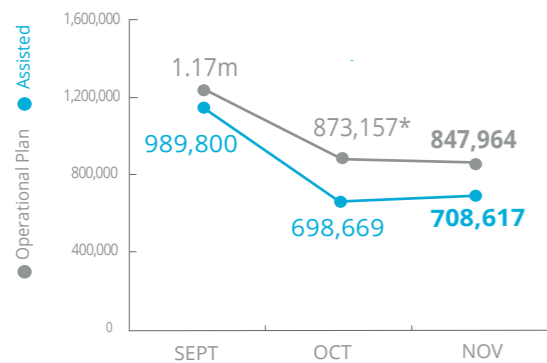
World Food Programme

Emergency Dashboard | December 2018

SAVING LIVES
CHANGING LIVES

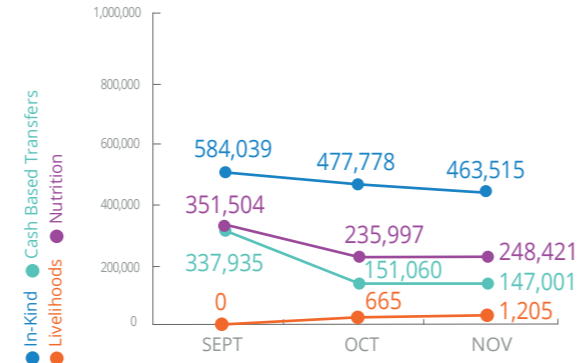
Nigeria

PEOPLE ASSISTED Borno, Yobe and Adamawa States



* Refocused assistance to most conflict-affected communities

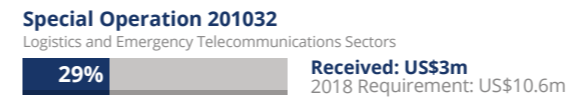
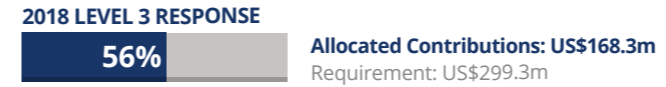
OPERATIONAL PROFILE by activity



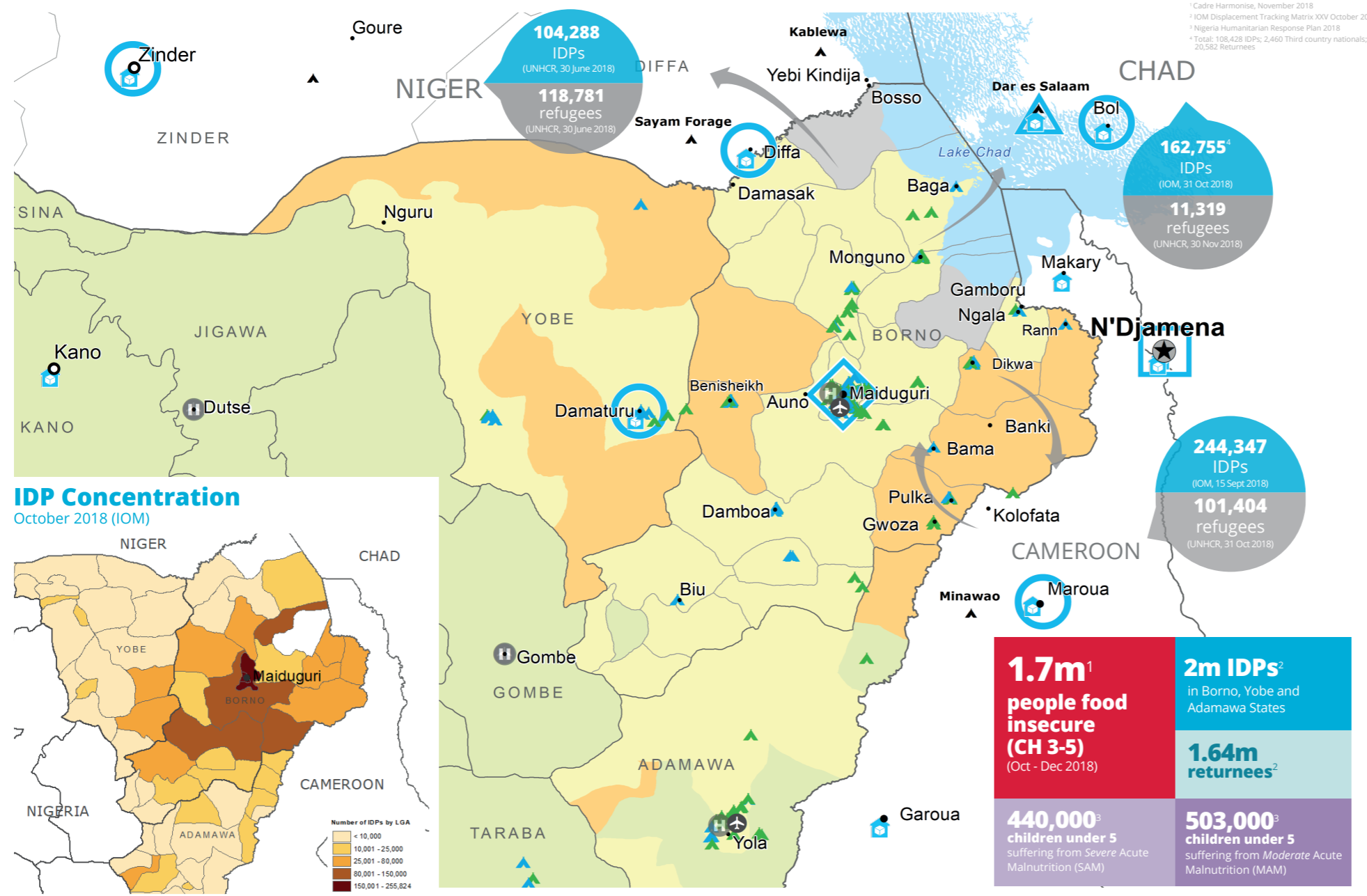
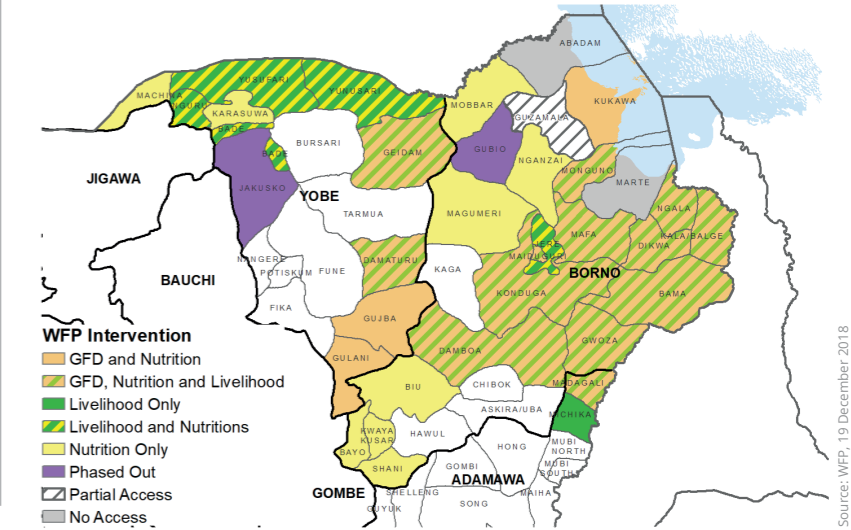
Figures should not be added to avoid double-counting

FUNDING Regional Emergency Operation 200777 (Nigeria Component)

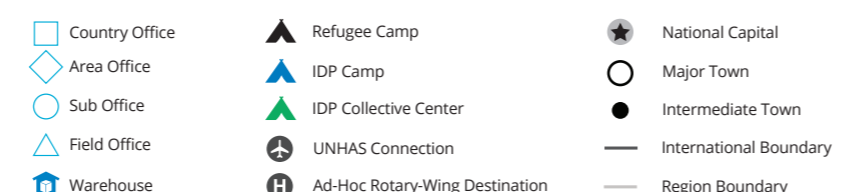
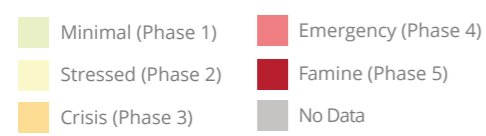
January - June 2019
Net funding requirement **US\$40.6m**



WFP OPERATIONAL PRESENCE GFD, NUTRITION, LIVELIHOOD INTERVENTIONS IN ADAMAWA, BORNO AND YOBE STATES January to September 2019



IPC Food Security Classification (October - December 2018 projection)

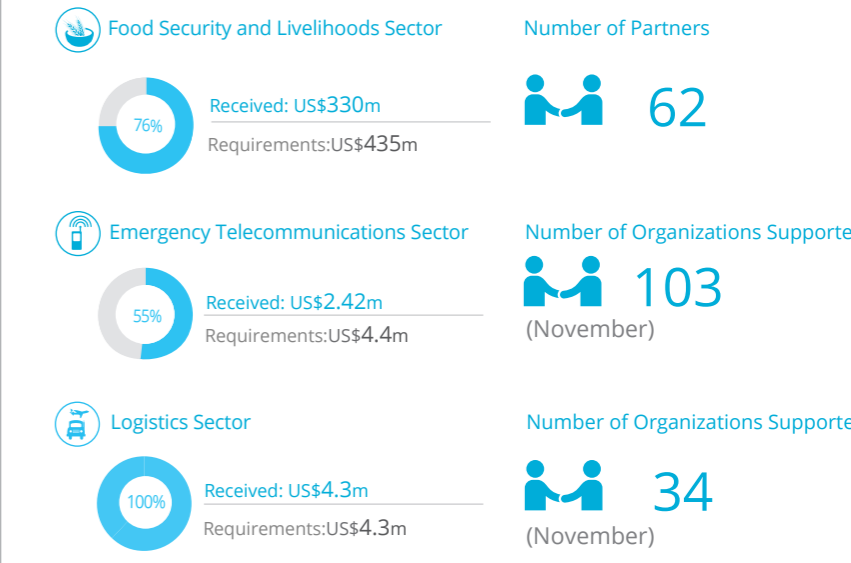


Sources: WFP, UNGIWG, GAUL, GLCSC, OCHA, UNHCR.

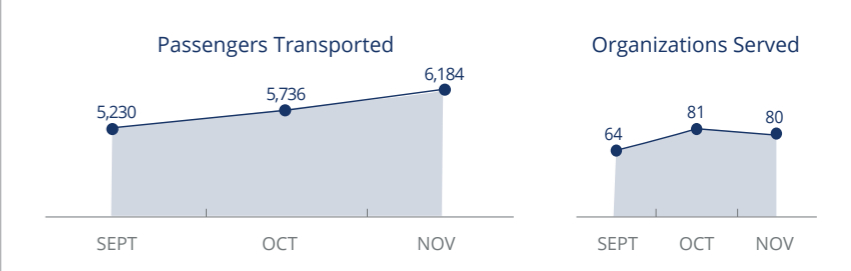
The designations employed and the presentation of material in the map(s) do not imply the expression of any opinion on the part of WFP concerning the legal or constitutional status of any country, territory, city or sea, or concerning the delimitation of its frontiers or boundaries.

© World Food Programme 2018.

WFP-LED AND SUPPORTED SECTORS



UN Humanitarian Air Service (UNHAS)



WFP LEVEL 3 EMERGENCY
SINCE 11 AUGUST 2016

For more information, see the SITUATION REPORT and COUNTRY BRIEF www.wfp.org/countries/nigeria

2A Regional Emergency Operation 200777
<http://documents.wfp.org/stellent/groups/public/documents/ep/WFP284303.pdf>

Produced by the WFP Operations Centre (OPSCEN) jointly with Country Office and Regional Bureau Dakar. This dashboard is based on best available information at the time of production. Future updates may vary as new information becomes available.