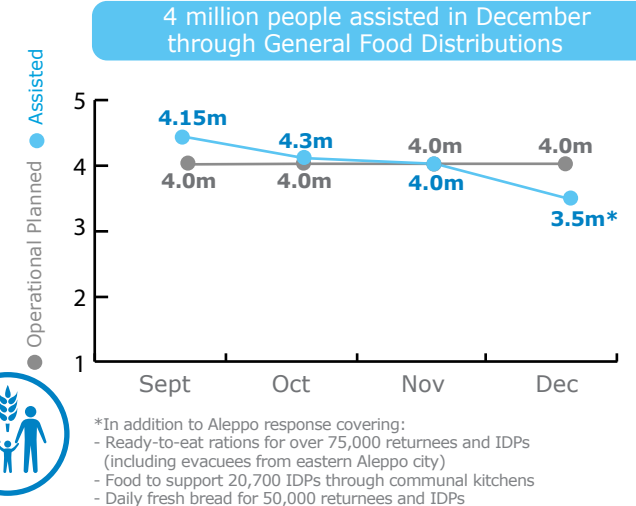


BENEFICIARIES

Emergency Operation 200339



OTHER ACTIVITIES

December 2016

- Nutrition support for **12,030** Pregnant and Nursing Women
- Specialised nutrition products for **178,160** children
- Fortified School Snacks for **237,100*** children

*Voucher Based Assistance for the Out of School Children (started in October) reached 393 beneficiaries in December.

NET FUNDING REQUIREMENTS

EMOP 200339**
PRRO 200988

\$253m (66%)
Net Funding Requirements

\$129m
Resourced

\$382m: Total Requirements

Six Month Outlook*

*Funding outlook covers Jan-June 2017.
 **The emergency operation (EMOP) ended in December 2016. A new Protracted Relief and Recovery Operation (PRRO) started in January 2017.

4.8 million Refugees in the Region

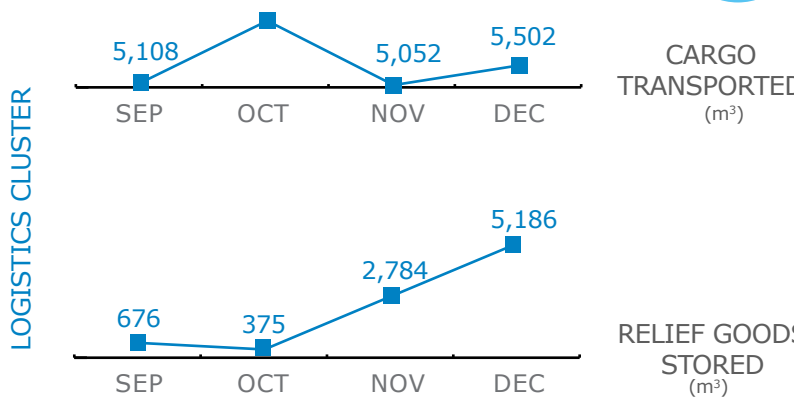
9 million in need of Food & Livelihood Support

6.3 million IDPs

OPERATIONAL CHALLENGES

- Humanitarian Access
- Insecurity

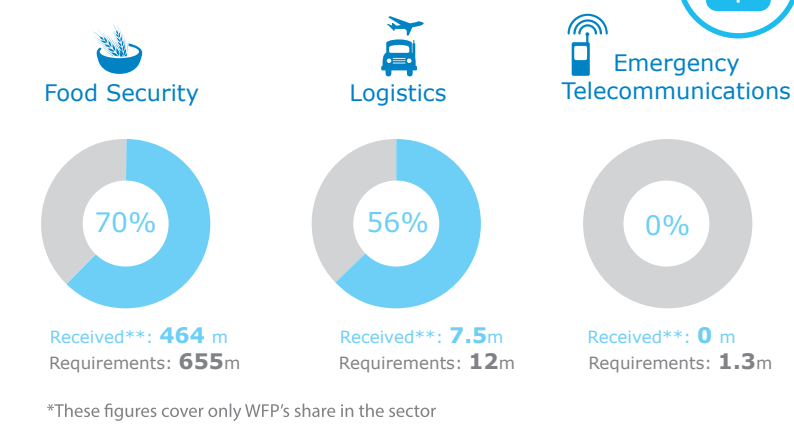
COMMON SERVICES



JOINT HUMANITARIAN CONVOYS SUPPORTED IN DECEMBER 2016: **1**

PARTNERS SERVED IN DECEMBER 2016: **8**

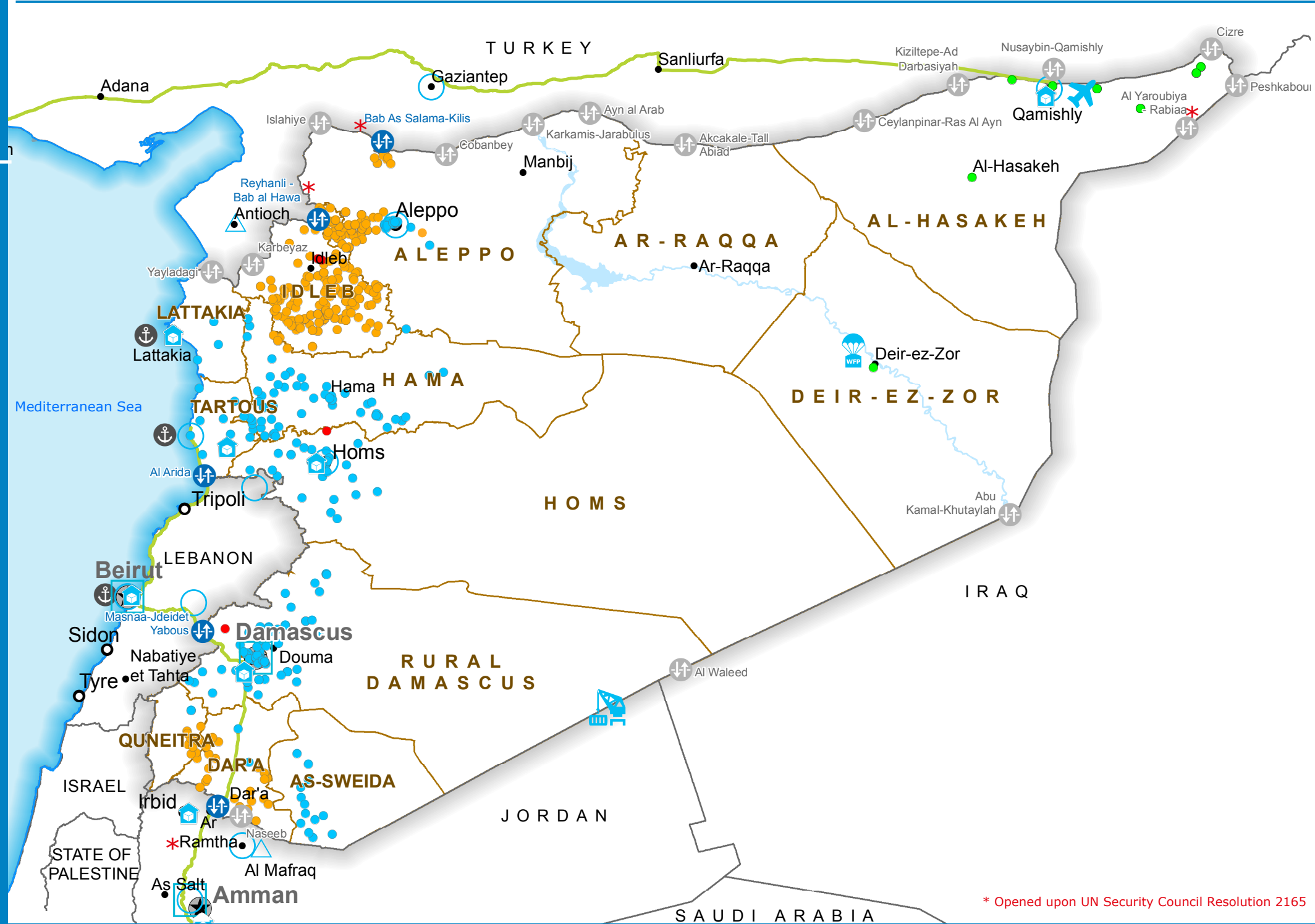
CLUSTERS & SECTORS FUNDING



WFP LEVEL 3 EMERGENCY
SINCE 14 DECEMBER 2012

IASC LEVEL 3 EMERGENCY
SINCE 15 JANUARY 2013

Check the **SITUATION REPORT**
<https://www.wfp.org/countries/syria>



Legend

- Country Office
- Sub Office
- Field Office
- Road Supply Route
- Warehouse
- Open Border Crossing Point
- Closed Border Crossing Point
- International Boundary
- Governorate Boundary
- Airlifts
- Crane Operation
- Airdrops
- National Capital
- Major Town
- Intermediate Town
- Port
- Food Distribution Points (FDP) in November 2016
 - FDP- Air deliveries
 - FDP- Regular deliveries
 - FDP- Cross-line deliveries
 - FDP- Cross-border deliveries

Sources: OCHA, WFP, GLCSC, UNGIWG, UNHCR, Geonames

The designations employed and the presentation of material in the map(s) do not imply the expression of any opinion on the part of WFP concerning the legal or constitutional status of any country, territory, city or sea, or concerning the delimitation of its frontiers or boundaries. ©World Food Programme 2016



As of 08 October 2016