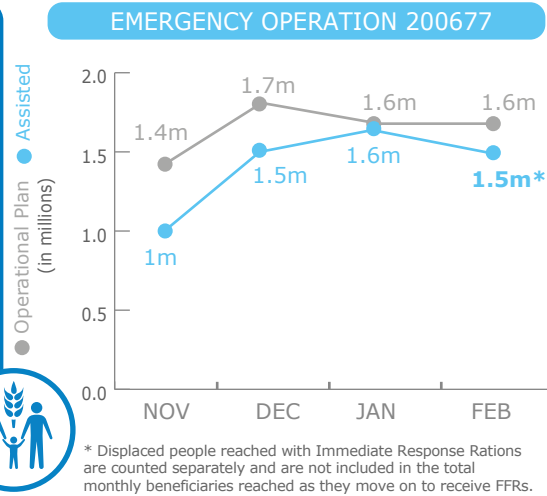
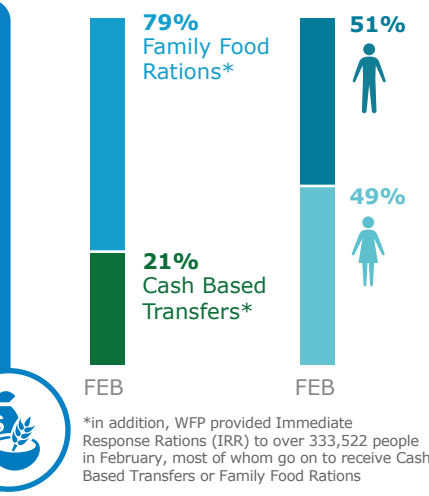


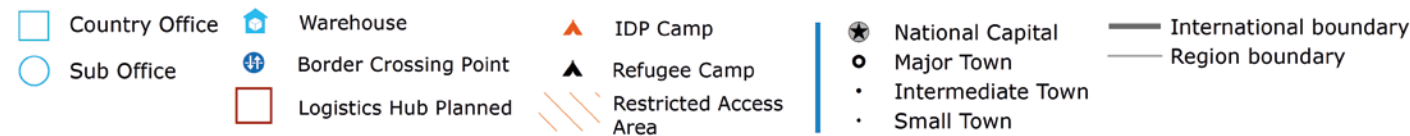
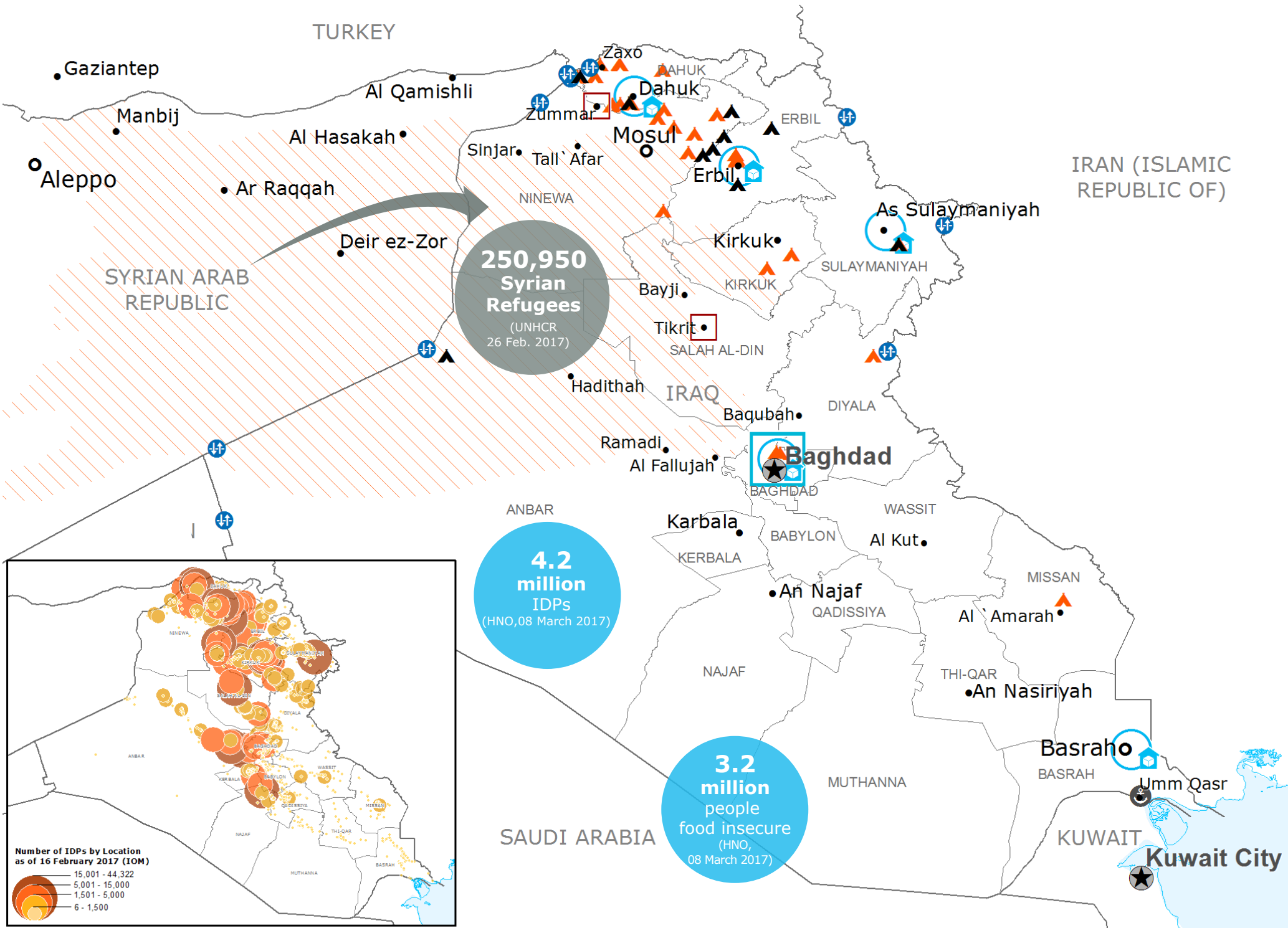
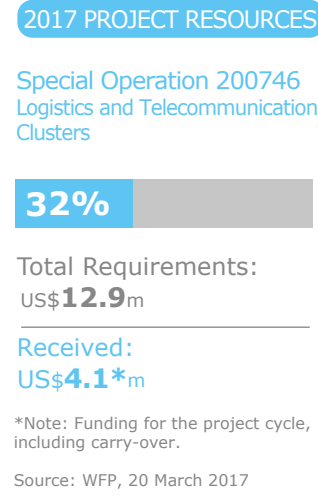
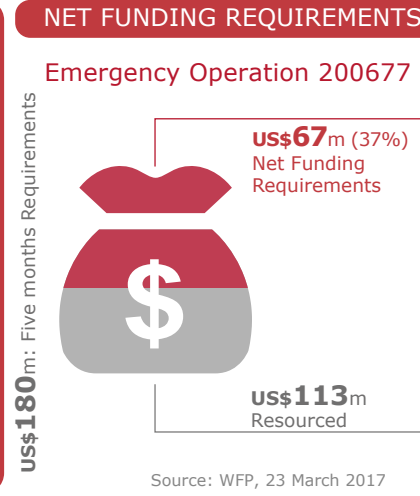
PEOPLE ASSISTED



OPERATIONAL PROFILE



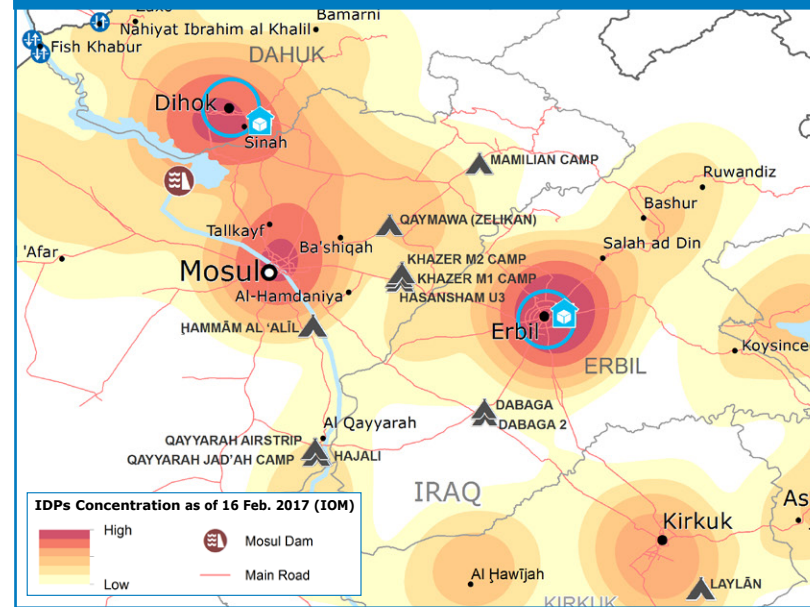
FUNDING



Sources: WFP, UNGIWG, GAUL, GLCSC, OCHA, UNHCR, IOM, INSO

The designations employed and the presentation of material in the map(s) do not imply the expression of any opinion on the part of WFP concerning the legal or constitutional status of any country, territory, city or sea, or concerning the delimitation of its frontiers or boundaries. © World Food Programme 2017

MOSUL CRISIS



270,000 IDPs

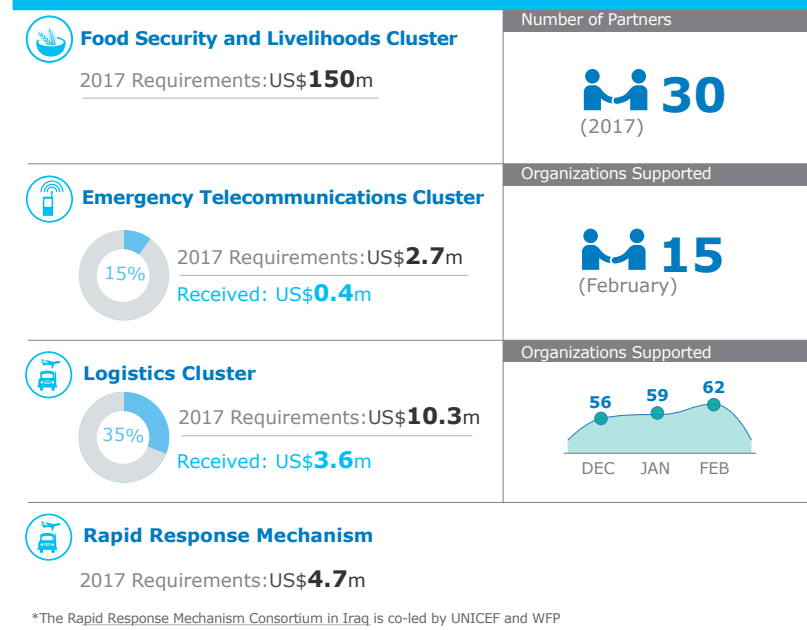
from Mosul and surrounding areas (OCHA, 20 March 2017)

650,000 civilians

remaining in western Mosul City. (OCHA, 16 March 2017)

More than 1 million people assisted by WFP since the start of the Mosul offensive in October 2016 (WFP, 10 March 2017)

WFP LED & CO-LED CLUSTERS



Source: OCHA FTS, 20 February 2017; Clusters, 10 March 2017

WFP LEVEL 3 EMERGENCY SINCE 11 AUGUST 2014

IASC LEVEL 3 EMERGENCY SINCE 13 AUGUST 2014

For more information, see the **SITUATION REPORT** and **COUNTRY BRIEF** www.wfp.org/countries/iraq

Produced by the WFP **Operations Centre (OPSCEN)** jointly with Country Office and Regional Bureau Cairo

This dashboard is based on best available information at the time of production. Future updates may vary as new information becomes available.