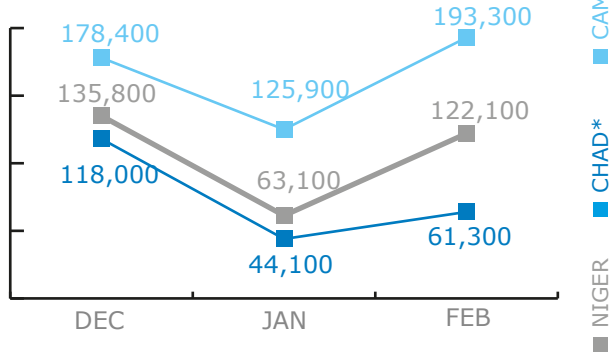


### BENEFICIARIES

Regional EMOP 200777

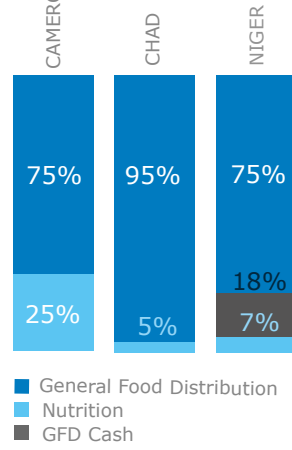
Total assisted in Cameroon, Chad and Niger in February : 376,700



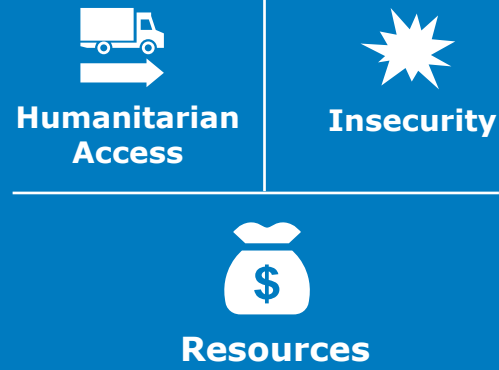
\*Chad also assists vulnerable people in the Lake basin under PRRO 200713.

### (FEB) ACTIVITIES

Regional EMOP 200777

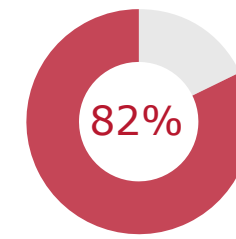


### OPERATIONAL CHALLENGES



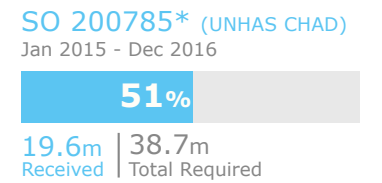
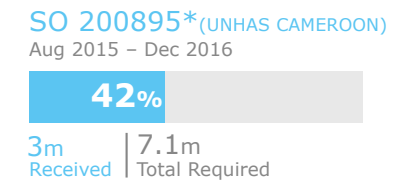
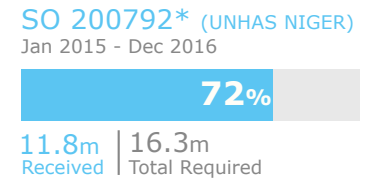
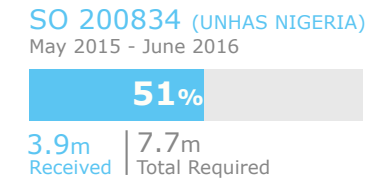
### FUNDING

#### NET FUNDING REQUIREMENTS



Regional EMOP 200777  
May - October 2016  
Net Funding Requirements: 109m  
Total Requirements: 132.7m

#### PROJECT FUNDING STATUS

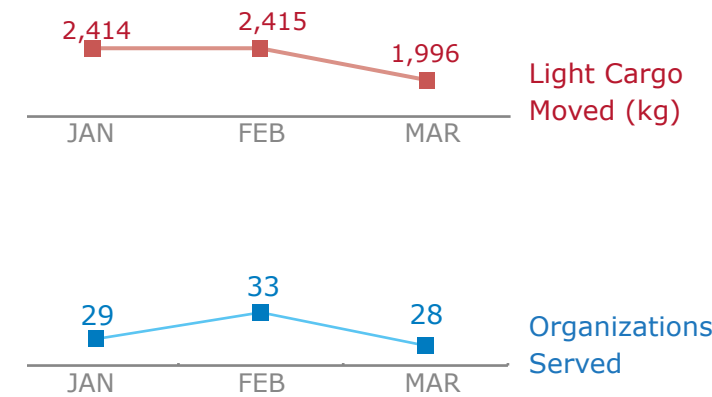


\*Covers operations in the whole country, not only in areas affected by insecurity near Nigeria.

#### COMMON SERVICES

UNHAS

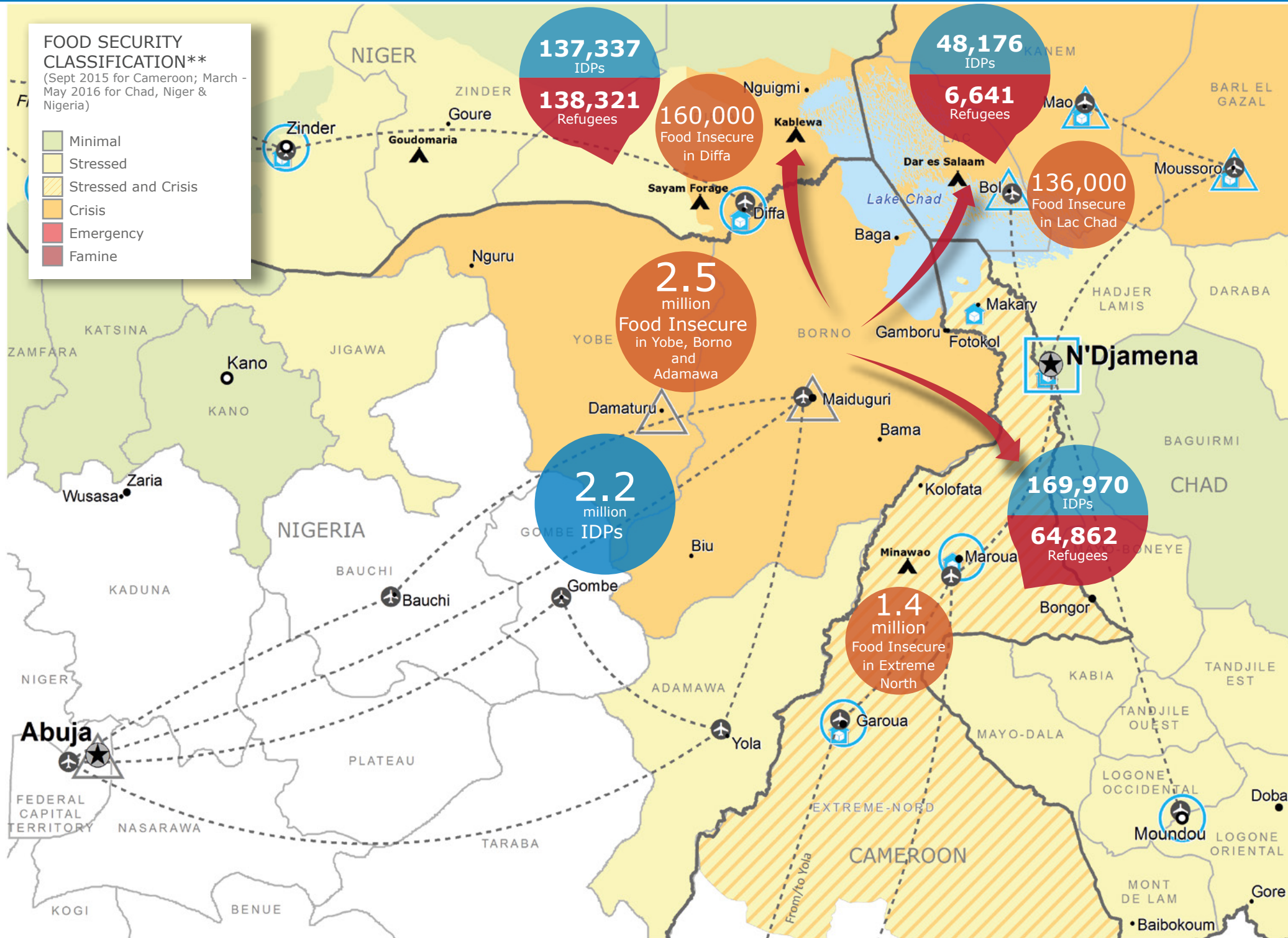
Source: WFP, 11 April 2016



#### FOOD SECURITY CLASSIFICATION\*\*

(Sept 2015 for Cameroon; March - May 2016 for Chad, Niger & Nigeria)

- Minimal
- Stressed
- Stressed and Crisis
- Crisis
- Emergency
- Famine



- Country Office
- Field Office
- Refugee Camp
- Warehouse
- UNHAS Connection
- UNHAS Route
- National Capital
- Major Town
- Intermediate Town
- Small Town
- International Boundary
- Region Boundary

\*\*Sources: Cadre Harmonise March 2016 for Chad, Niger and Nigeria; EFSA Sept 2015 for Cameroon.

Sources: WFP, UNGIWG, GAUL, GLCSC, UNHCR, IOM. The designations employed and the presentation of material in the map(s) do not imply the expression of any opinion on the part of WFP concerning the legal or constitutional status of any country, territory, city or sea, or concerning the delimitation of its frontiers or boundaries. © World Food Programme 2016

Check the **COUNTRY BRIEF** and **SITUATION REPORT**  
<http://www.wfp.org/countries/CAMEROON>  
<http://www.wfp.org/countries/CHAD>  
<http://www.wfp.org/countries/NIGER>

Produced by the WFP **Operations Centre (OPSCEN)**

This dashboard is based on best available information at the time of production. Future updates may vary as new information becomes available.