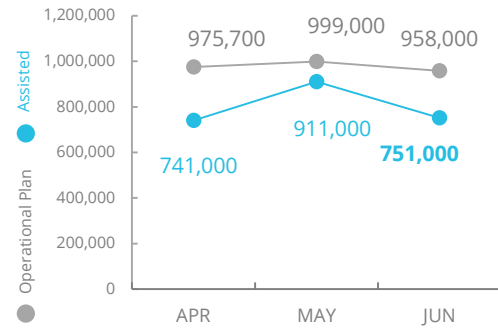


Nigeria

PEOPLE ASSISTED BY WFP



OPERATIONAL PROFILE

People reached (June)

Category	Assisted	Status	WFP Response
Livelihoods	111,500	✓	Community-based activities: Ongoing
Nutrition	164,400	✓	Nutrition: Ongoing
GFA: Cash Based Transfers	283,600	✓	CBT: Ongoing
GFA (General Food Assistance: In-kind)	326,600	✓	Food Assistance: In-kind provided in the northeast

SOURCE: WFP, 04 AUGUST 2020

COVID-19 Operational Impact

FUNDING

Nigeria Country Strategic Plan

August 2020 – January 2021
Net funding requirements

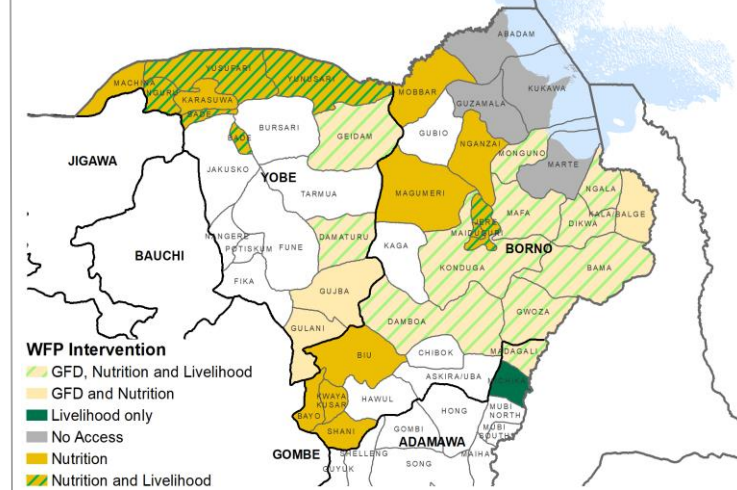
US\$148m

2020 LEVEL 3 RESPONSE
(Entire Country Strategic Plan)
Requirements: USD 288.3m
Contributions: USD 218m



SOURCE: WFP, 11 AUGUST 2020

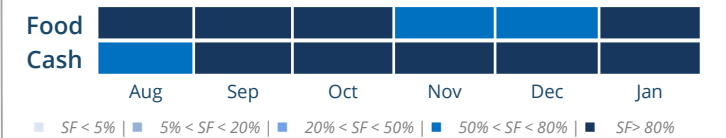
WFP OPERATIONAL PRESENCE



AVERAGE MONTHLY FUNDING REQUIREMENTS

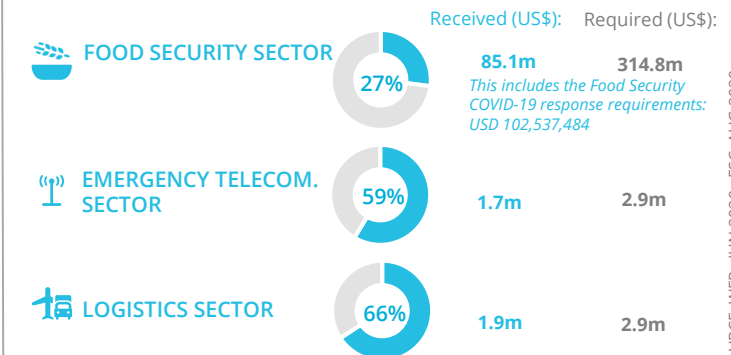
Food US\$ 17.4m Cash US\$ 18.7m

EXPECTED SHORTFALLS



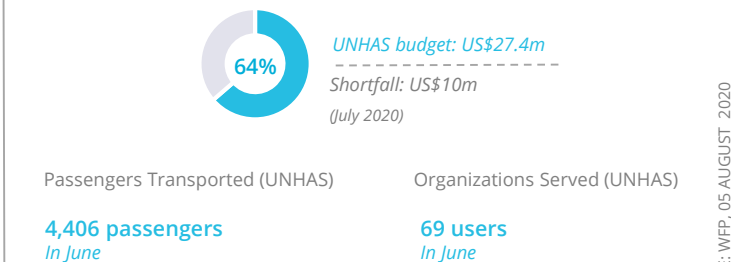
SOURCE: WFP, 04 AUG 2020

WFP-LED AND CO-LED SECTORS

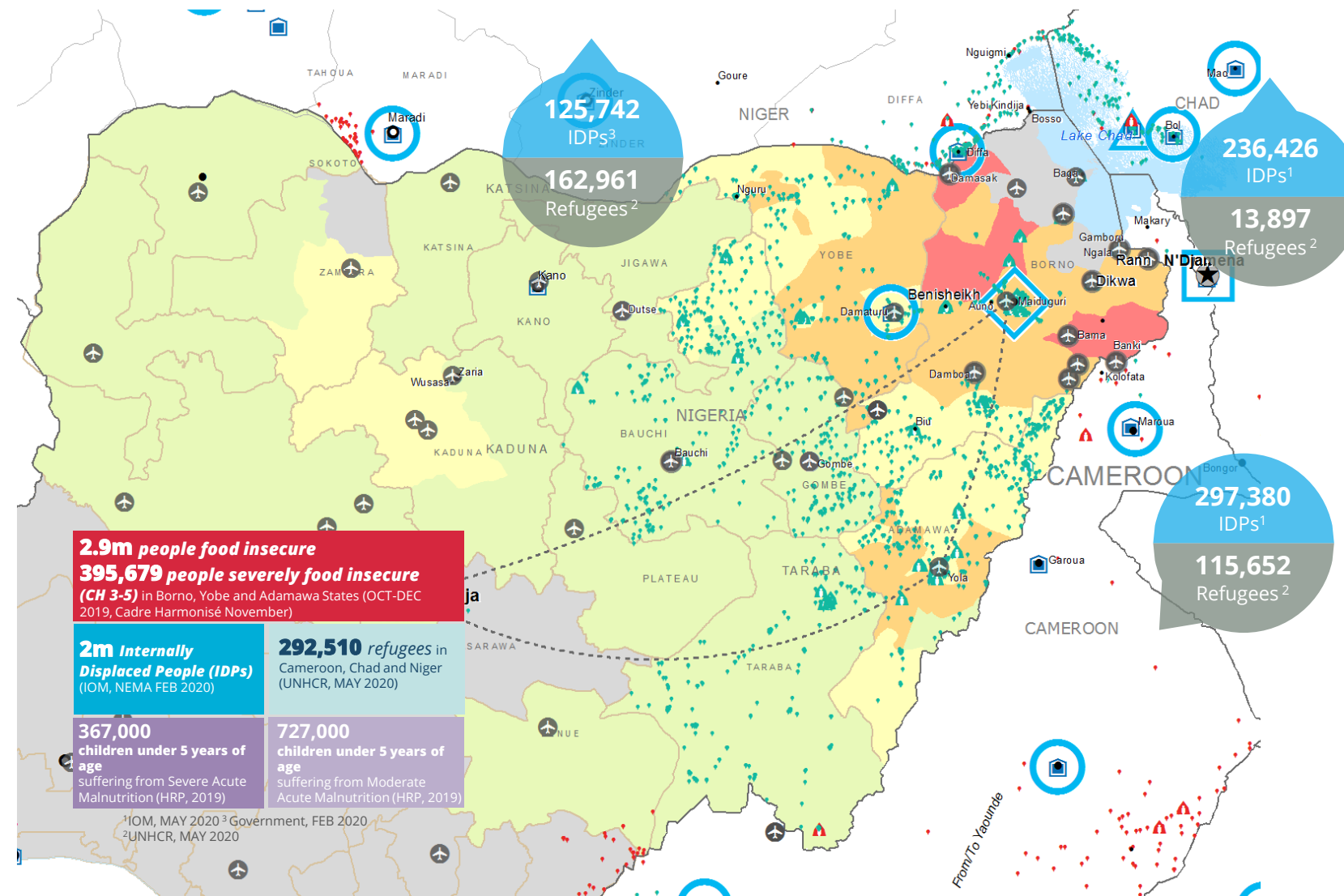


SOURCE: WFP, JUN 2020; FSC, AUG 2020

UN HUMANITARIAN AIR SERVICE (UNHAS)



SOURCE: WFP, 05 AUGUST 2020



<p>CH Food Security Classification June - August 2020</p> <ul style="list-style-type: none"> No data Minimal (Phase 1) Stressed (Phase 2) Crisis (Phase 3) Emergency (Phase 4) Famine (Phase 5) 	<ul style="list-style-type: none"> Country Office Area Office Sub Office Field Office 	<ul style="list-style-type: none"> UNHAS Connection Ad-Hoc Fixed-Wing Destination Ad-Hoc Rotary-Wing Destination Warehouse 	<ul style="list-style-type: none"> IDP Camp IDP Center IDP Location Refugee Camp Refugee Center Refugee Location 	<ul style="list-style-type: none"> National Capital Major Town Intermediate Town Small town 	<ul style="list-style-type: none"> International Boundary Province boundary River
--	---	--	--	---	--

Sources: WFP, UNGIWI, GAUL, GLCSC, OCHA, UNHCR.

The designations employed and the presentation of material in the map(s) do not imply the expression of any opinion on the part of WFP the delimitation of its frontiers or boundaries.
© World Food Programme 2020.

WFP LEVEL 3 EMERGENCY
SINCE 11 AUGUST 2016

SITUATION REPORT and COUNTRY BRIEF

