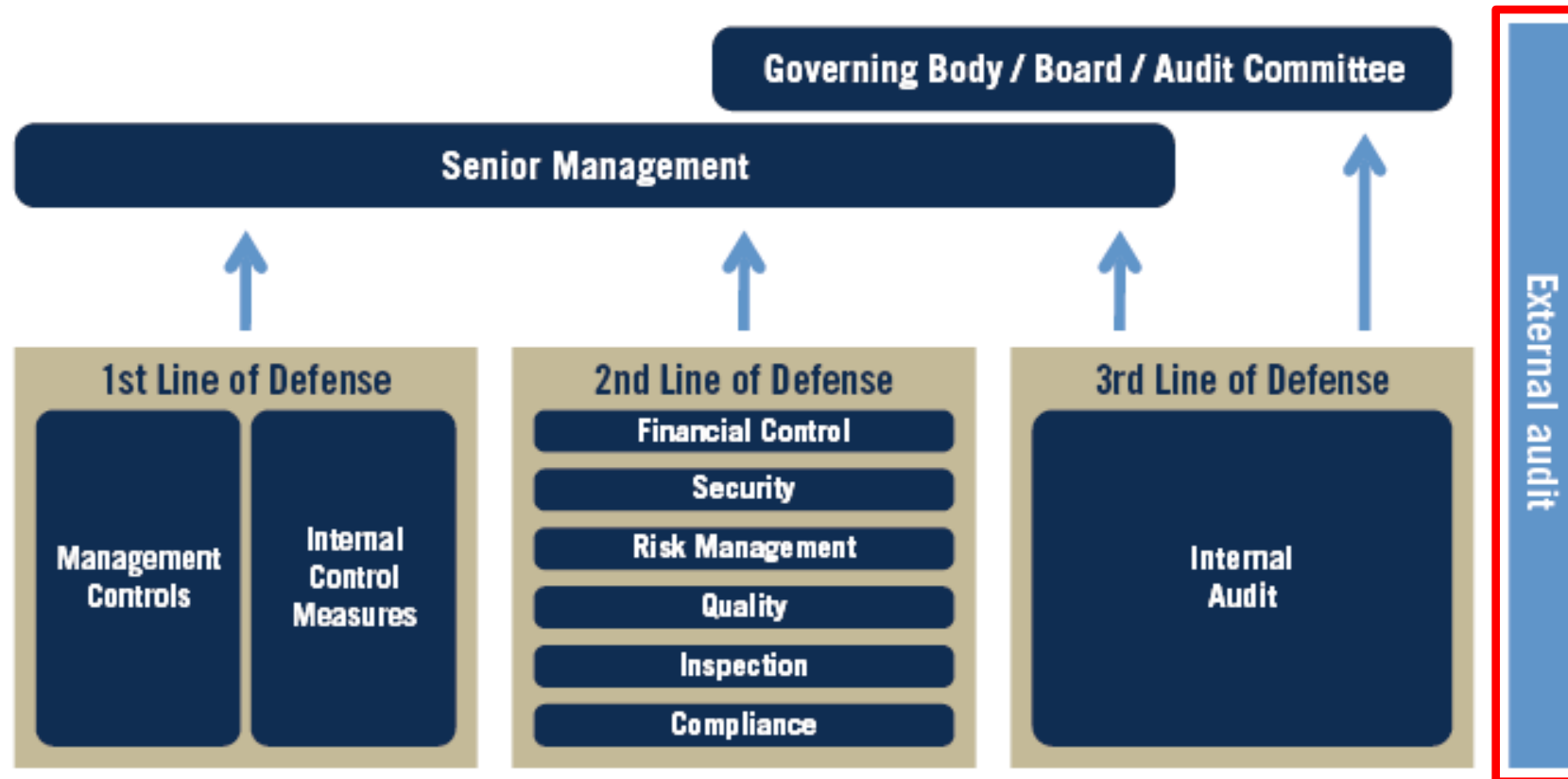




EXTERNAL AUDIT

The Three Lines of Defense Model



Adapted from Institute of Internal Auditors



EXTERNAL AUDIT



Positioned outside the organization's structure

Total Independence from the organization's management

Capacity of auditing the organization's overall governance and control structure

Risk and scope addressed less extensive than those addressed by the organization's three internal lines of defence



EXTERNAL AUDIT



Financial Audit

The responsibilities of the External Auditor consist of auditing the financial statements of WFP (Article 14.1 of the Financial Regulations) and making observations, if he sees fit, regarding the effectiveness of the financial procedures, the accounting system, and internal financial controls

Field Audits

Each year, the External Auditor undertakes ten field visits, mainly to country offices and regional bureaux. These audits address the regularity of offices' management and also contribute to the performance audits according to the themes selected. They may also involve the checking of samples selected in line with risks in areas affecting the financial statements.

Performance Audits

Performance audits aim to determine whether, in the areas reviewed, activities are carried out in accordance with the principles of economy, efficiency and effectiveness and whether there is scope for improvement. They also aim to ensure that activities, financial transactions and information are, in all material respects, in conformity with the provisions of WFP's basic texts.





2017 WORK PLAN



- ❑ **Financial Audit**
- ❑ **Performance Audit 1: *Food-related losses***
- ❑ **Performance Audit 2: *Scale-up and scale-down of resources in emergency operations***
- ❑ **10 field audits** (including the Regional Bureaux of Cairo and Johannesburg)



FIELD VISITS FOR 2017



Entity	Location	Choice determinant
Regional bureau	Cairo	Emergency context
Regional bureau	Johannesburg	Emergency context
Country Office	Turkey	Logistics/Ongoing L3
Country office	Lebanon	CBT/Ongoing L3
Country office	State of Palestine	CBT
Country office	Ukraine	L2 completed
Country office	Nepal	L2 completed
Country office	Zimbabwe	L3 completed
Country office	Malawi	P4P/L3 completed
Country office	Kenya	Food entry point/Ongoing L2



THANK YOU FOR YOUR ATTENTION

