



Highlights:

- Escalated fighting in Ar-Raqqa severely impacts markets functionality leading to increase in food basket cost.
- In Ar-Raqqa city, the price of one kg of rice reached SYP 900, representing an increase of 12 percent compared to May level and 72 percent compared to national average.
- The average retail price of rice is higher by ten percent in hard-to-reach markets and 77 percent in besieged Deir-ez-Zor markets compared to national level average.
- Due to high demand on livestock during Ramadan, an increase of 19 percent was recorded in the price of sheep prices compared to last month.
- Improved market capacity and functionality exerts downward pressure on staple food prices in most of the besieged markets.

For further information please contact :

Ahmad Shah : Ahmadshah.Shahi@wfp.org

Dima Alhumsi : Dima.Alhumsi@wfp.org

A: Standard Food Basket

In June 2017, the national average cost of a standard food basket¹ (group of essential food commodities) was SYP 32,965. This represents a slight increase of one percent compared to last month, but still less by 15 percent compared to six months ago and one percent compared to corresponding month last year.

The data for this month also indicated that the highest cost of food basket was in Deir-ez-Zor governorate at SYP 55,200 while the lowest was recorded in Al-Hasakeh at SYP 27,065.

During reporting month, an increase of seven percent in the food basket cost observed in Ar-Raqqa compared to last month. This reflects the severe impact of escalated fighting on supply routes and food availability in markets.

As shown in Chart 1, the scale of the difference between the minimum and maximum values of the standard food basket cost is slightly smaller in June than in December 2016 (six months ago). This indicates better integration of markets during the reporting month. Mainly due to relatively improved security situation in many parts of the country.

It is worth to mention that the smaller the difference between the minimum and the maximum values, the higher the market integration and vice versa.

Chart 1: Min. vs. Max. National Average Cost of Food Basket (in SYP)

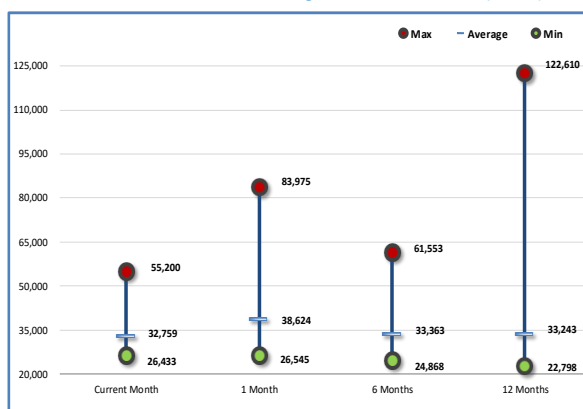
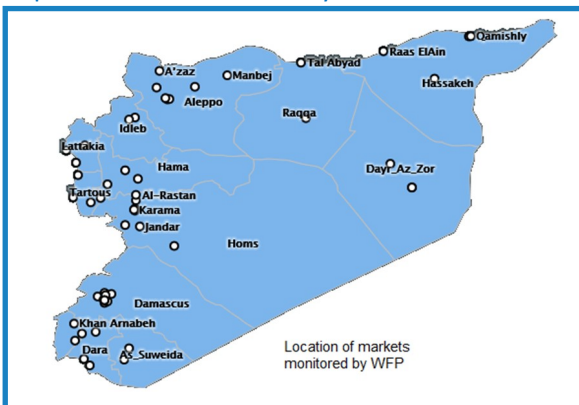


Figure 1: Food Basket Cost and Changes (in SYP)

Governorate	Price June 2017	Price 1 month change	Price 6 months changes	Price 12 months changes
Aleppo	SYP 29,615	-1%	-59%	-11%
Damascus	SYP 29,675	-1%	-3%	2%
Dar'a	SYP 27,425	0%	3%	8%
Deir-ez-Zor	SYP 55,200	0%	-34%	-10%
Hama	SYP 31,875	1%	-3%	8%
Al-Hasakeh	SYP 27,065	2%	-27%	-35%
Homs	SYP 29,630	-1%	1%	19%
Lattakia	SYP 30,405	0%	-4%	5%
Ar-Raqqa	SYP 42,695	7%	16%	-2%
Rural Damascus	SYP 29,330	-1%	-15%	-23%
As-Sweida	SYP 32,810	0%	3%	1%
Tartous	SYP 31,425	2%	3%	5%
Quneitra	SYP 28,535	-2%	0%	3%
Idlib	SYP 35,800	2%	5%	10%
Average	SYP 32,965	1%	-15%	-1%

Map 1: Location of markets monitored by WFP



1. The cost of a standard basket of dry goods providing 1,930 kcal a day for a family of five during a month. The basket includes 37 kg of bread, 19 kg rice, 19 kg lentils, 5 kg of sugar, and 7 kg of vegetable oil.

B: Retail Prices

1- Wheat Flour, Rice and Bulgur:

There was a slight increase in food prices in many monitored markets during Ramadan inline with higher demand on main food commodities.

During reporting month, one kg of wheat flour sold at SYP 260, rice at SYP 525 and bulgur at SYP 300. Compared to May, the prices slightly increased by one percent for rice, two percent for bulgur while it remained unchanged for wheat flour.

Compared to six months ago, the prices declined by 23 percent for wheat flour, seven percent for rice and 13 percent for bulgur. But still the cost went up by six percent for wheat flour, five percent for bulgur while that of rice didn't change compared to same month last year.

Looking at the pattern of retail prices for rice across all main markets in June, Deir-ez-Zor recorded the highest price, SYP 725/kg, while the lowest price was observed in As-Sweida, SYP 325/kg. Markets in Deir-ez-Zor registered also the highest levels of wheat flour and bulgur at SYP 375/kg and SYP 715/kg, respectively. The lowest price of wheat flour was reported from Quneitra markets, SYP 205/kg while for bulgur it was from Dar'a markets at SYP 200.

During June the average retail price of rice was higher by ten percent in hard-to-reach markets and 77 percent in besieged Deir-ez-Zor markets when compared to national level average. Furthermore, wheat flour and bulgur were significantly higher by 93 and 153 percent in besieged Deir-ez-Zor markets compared to national level average.

In Ar-Raqqa city, the price of one kg of rice reached SYP 900, representing an increase of 12 percent compared to May and 72 percent compared to national average. This reflects the severe disruption of supply routes and escalated fighting that significantly impacted market functionality and capacity.

2– Bread:

In June 2017, the average nominal retail prices for public (subsidized) bread and commercial (shop) bread were SYP 80/bundle and SYP 135/bundle, respectively. Compared to last month, the price of public bread remained unchanged while the price of commercial bread increased by four percent.

Between December 2016 and June 2017, the average retail prices of public and shop bread went down by 20 percent and 29 percent, respectively. Year-on-year, public bread decreased by two percent while shop bread increased by four percent.

Across all main monitored markets, Idleb registered the highest price for public and commercial bread during June at SYP 275/bundle and SYP 300/bundle, respectively. Tartous market recorded the lowest price for commercial bread at SYP 65/bundle.

In besieged markets of Deir-ez-Zor, the bread price was higher by 25 percent for public and 11 percent for commercial compared to national level average. In hard-to-reach markets, it was higher by 31 percent for public and 19 percent for commercial bread compared to national level average.

Chart 2: Wheat Flour Retail Price Trends

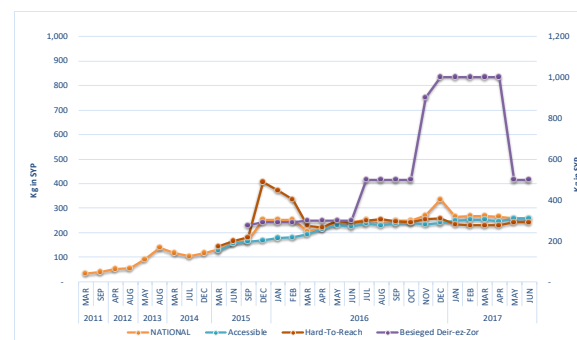


Chart 3: Retail Prices of Rice in SYP

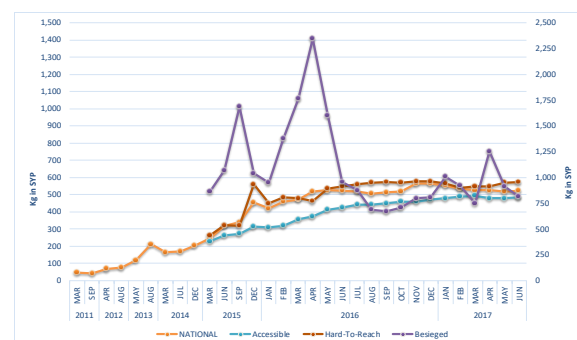


Chart 4: Retail Prices of Bulgur in SYP

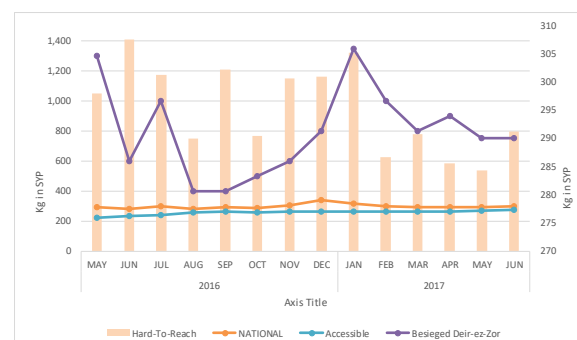


Chart 5: Retail Prices of Public Bread in ACC, HTR and BSG Markets in SYP

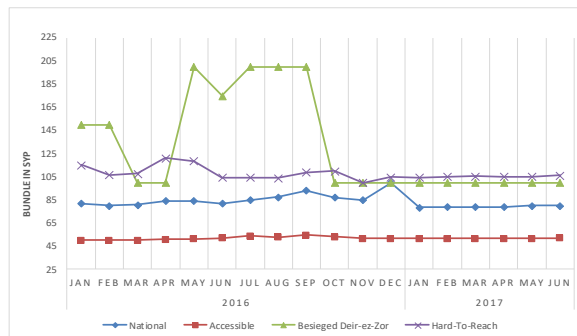
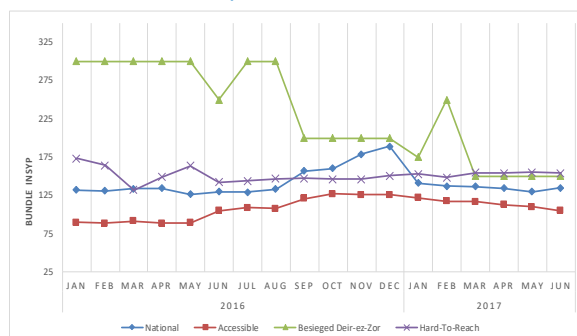


Chart 6: Retail Prices of Shop Bread in ACC, HTR and BSG Markets in SYP



Source: WFP Field Offices

3– Diesel and cylinder of butane gas

In June 2017, the average price of diesel was SYP 335/L and SYP 4,450 for a cylinder of butane gas. Between December 2016 and June 2017, the average retail prices of diesel and cylinder of butane gas decreased by 19 and 32 percent, respectively. Compared to the same month last year, prices went up by three percent for diesel and 12 percent for butane gas.

During the reporting month, the highest price for diesel was reported from Deir-ez-Zor markets at SYP 1,115/L while the lowest was from Al-Hasakeh, SYP 85/L. The most expensive price for butane gas was observed also in Deir-ez-Zor, SYP 9,250.

In besieged markets of Deir-ez-Zor, the price of diesel was around six-times more than Damascus level (approximately SYP 2,000/L). In hard-to-reach markets, the price of one liter of diesel was SYP 250, remaining unchanged compared to last month and six months ago but higher by 18 percent compared to corresponding month last year.

C. Wholesale Prices of Main Cereal in Damascus Market

During the reporting month, the average nominal wholesale price of cereal was SYP 6,500/25 kg for wheat grain, SYP 5,625/25 kg for bulgur and SYP 11,425/25 kg for rice.

Compared to May, the prices have increased by two percent for wheat, one percent for rice, while it decreased by five percent for bulgur.

Between December 2016 and June 2017, wholesale prices decreased by 16 percent for rice, 22 percent for bulgur and 20 percent for wheat.

Year-on-year, the wholesale price decreased by 14 percent for white rice, 16 percent for wheat grain and 20 percent for bulgur.

D. Food Supply to Markets

In June 2017, the commercial flow to many besieged areas continues to improve especially Madaya, Az-Zabadani, eastern Ghouta and besieged Deir-ez-Zor. This has relatively improved market capacity and functionality and exerted downward pressure on staple food prices. However, the situation in Ar-Raqqa city remains challenging where most of the supply routes to the city are blocked and inaccessible, due to active conflict.

On the other hand, in accessible areas including Damascus, Tartous, Lattakia, Hama and As-Sweida, supply routes were open and markets were fully functioning.

Eastern Aleppo and Homs city (returnees areas) recorded notable improvement in terms of food availability and market capacity where many traders opened their shops again despite the high level of devastation.

Chart 7: Retail Prices of Diesel in SYP

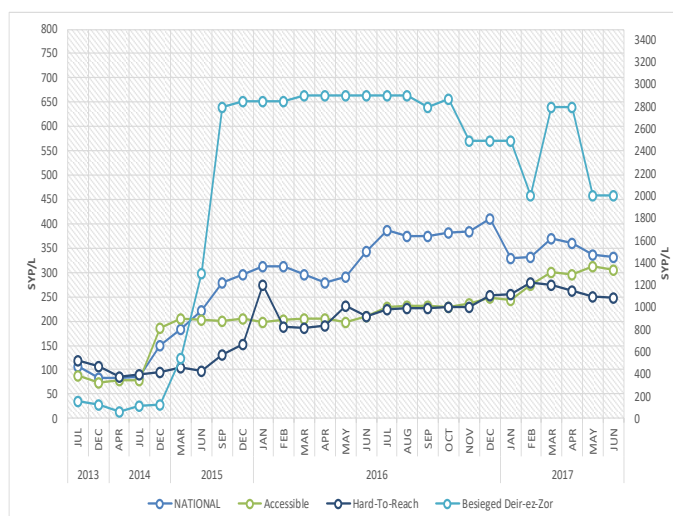


Chart 8: Retail Prices of Butane Cylinder in SYP

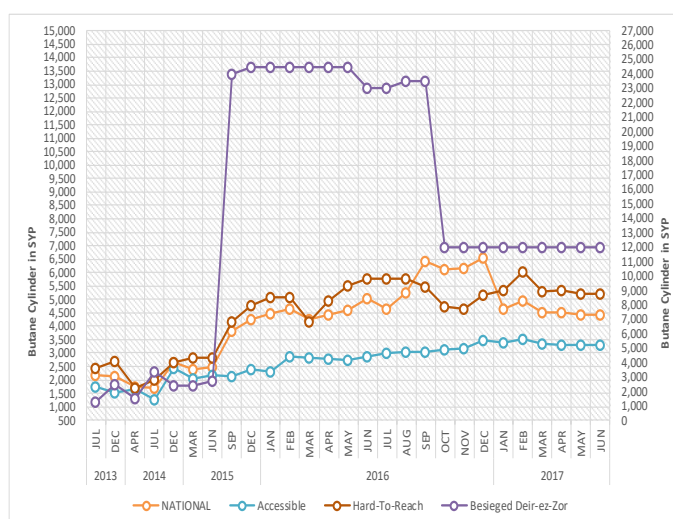
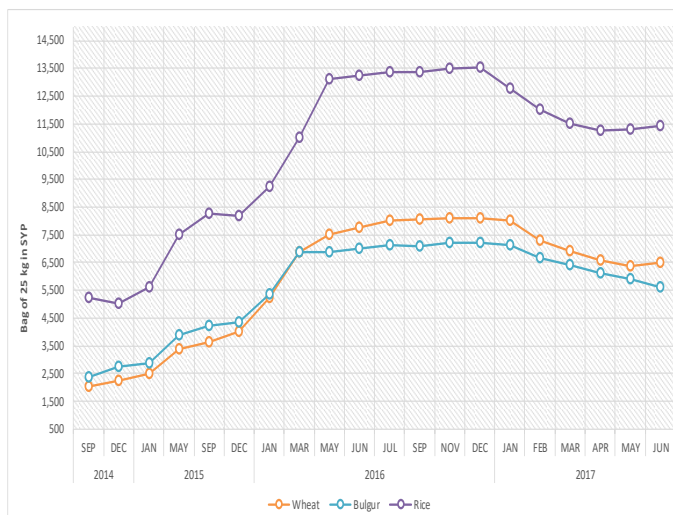


Chart 9: Wholesale Prices for Wheat, Bulgur and Rice in SYP



Source: WFP Field Offices

E. Terms of Trade (TOT):²

TOT between wage labour and wheat flour

The national average daily wage rate during the reporting period was SYP 1,650. The trends for purchasing power (measured by terms of trade) of casual labourers remains weak across all monitored markets in the country.

In June 2017 on national average for a whole day of work a casual labour could only buy 6.4 kg of wheat flour/day, which represents a slight increase of four percent compared to the prior month, 27 percent compared to six months ago and 11 percent compared to corresponding month last year.

Despite the high demand on agriculture labour due to the harvest season the situation remains critical in besieged markets where job opportunities are still limited and wages are not enough to cover the high cost of food for the minimum daily requirements. Moreover, in some locations wages for IDPs reported to be lower than residents. This adds higher pressure on food security situation for this vulnerable category.

TOT between sheep and wheat flour

During June, the national average price of a two-year old male sheep was SYP 11,135/head. This represents an increase of 19 percent compared to last month, 32 percent compared to six months ago and 20 percent compared to the same month last year. This increase is attributed to high demand on livestock during Ramadan.

The national average TOT between a sheep and wheat flour was 426kg/sheep, which is higher by 19 percent compared to last month and 43 percent compared to the December 2016 levels.

F. International Market Prices

The FAO Food Price Index averaged 175 points in June 2017, up by two percent compared to last month's average and seven percent when compared to same month last year. The Cereal Price Index averaged 154 points in this month, up by four percent compared to May level and corresponding month of last year.

In June 2017, the wheat prices on local markets averaged USD 505/MT, which is more than two times higher than the price of wheat in the international market (USD 190/MT).

Chart 10: Terms of Trade (TOT) between wage labour and wheat flour

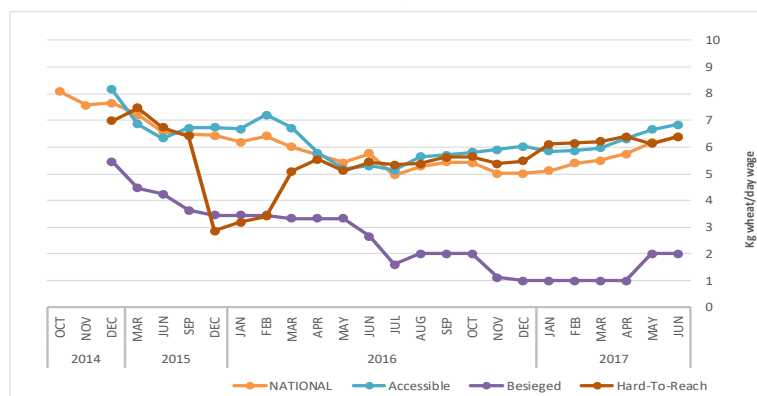
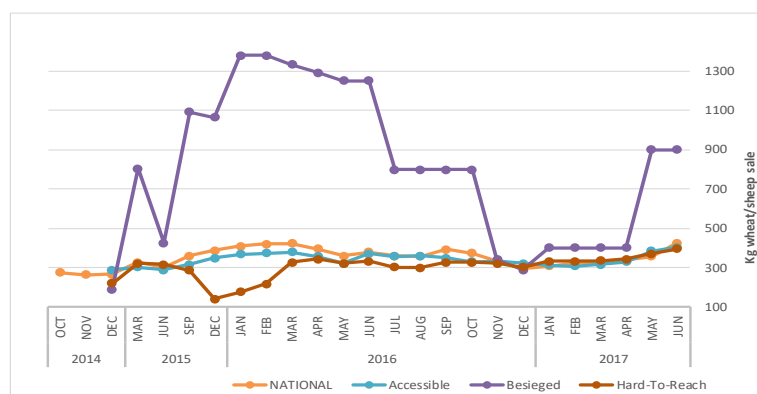


Chart 11: Terms of Trade (TOT) between sheep and wheat flour



Source: WFP Field Offices

Chart 12: Trends in global wheat prices

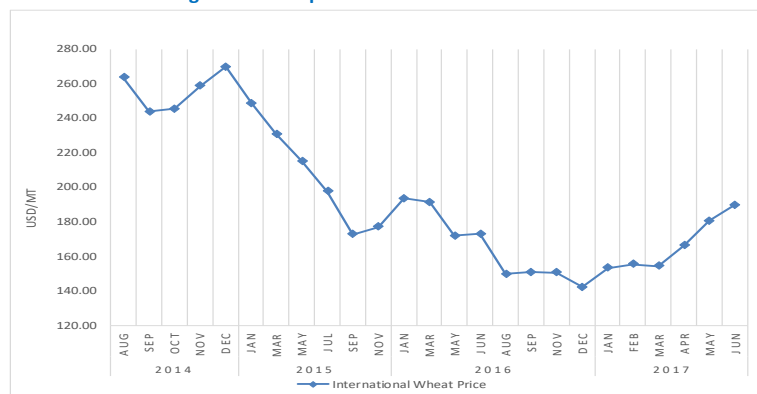
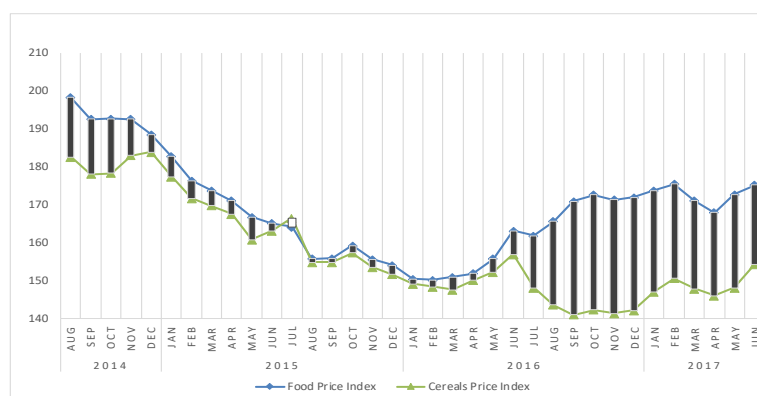


Chart 13: Trends of food and cereals price indices



Data Source: <http://www.fao.org/worldfoodsituation/wfs-home/foodpricesindex/en/> and

2. The TOT are proxy indicators of the purchasing power of households that rely on livestock and/or casual labour as their main source of income for the purchase of cereals from local markets. TOT are important components of food security analysis. Changes in the terms of trade between wages/livestock and staple food commodities are indicative of the trends in purchasing power and the impact on the food security situation of households dependent on food purchases through income from daily wage labour and/or the sale of livestock.

Commodity	Governorate	Current Price	Price change (%)	Price change (%)	Average Change	Average Change	Commodity	Governorate	Current Price	Price change (%)	Price change (%)	Average Change	Average Change
			1M	6 M	1M	6 M				1M	6 M		
Bread Public (1.5 kg)	Aleppo	114	10.0	(18.7)	↑	↓	Date (kg)	Aleppo	994	7.2	(12.4)	↔	↓
	Damascus	50	-	-	↔	↔		Damascus	1,100	11.1	14.7	↑	↑
	Dar'a	50	-	-	↔	↔		Dar'a	1,050	10.6	10.6	↑	↑
	Deir-ez-Zor	100	-	-	↔	↔		Deir-ez-Zor	2,525	-	58.3	↔	↑
	Idleb	275	10.0	10.0	↑	↑		Idleb	500	11.1	11.1	↑	↑
	Hama	50	-	(25.0)	↔	↓		Hama	1,100	14.4	13.4	↑	↑
	Al- Hasakeh	50	-	-	↔	↔		Al- Hasakeh	1,000	-	83.3	↔	↑
	Homs	50	-	-	↔	↔		Homs	1,100	16.4	23.3	↑	↑
	Lattakia	50	-	-	↔	↔		Lattakia	1,200	4.5	50.0	↔	↑
	Quneitra	80	(6.0)	-	↔	↔		Quneitra	1,075	10.4	15.9	↑	↑
	Ar-Raqqa	105	3.3	3.3	↔	↔		Ar-Raqqa	1,000	71.4	96.2	↑	↑
	Rural Damascus	50	-	-	↔	↔		Rural Damascus	1,400	3.8	3.8	↔	↔
	As-Sweida	50	-	-	↔	↔		As-Sweida	1,250	3.6	34.5	↔	↑
	Tartous	50	-	-	↔	↔		Tartous	1,225	14.3	65.2	↑	↑
Bread Shops (1.5 kg)	Aleppo	193	4.6	(19.9)	↔	↓	Diesel (L)	Aleppo	331	(3.5)	0.6	↔	↔
	Damascus	105	(6.7)	(30.0)	↔	↓		Damascus	308	(5.4)	30.8	↔	↑
	Dar'a	150	-	-	↔	↔		Dar'a	293	(1.9)	(15.3)	↔	↓
	Deir-ez-Zor	175	-	37.5	↔	↑		Deir-ez-Zor	1,113	-	(0.8)	↔	↔
	Idleb	300	4.5	4.5	↔	↔		Idleb	270	(1.8)	(22.9)	↔	↓
	Hama	67	11.1	(46.8)	↑	↓		Hama	375	-	7.1	↔	↔
	Al- Hasakeh	138	-	22.5	↔	↑		Al- Hasakeh	85	-	36.7	↔	↑
	Homs	102	(4.2)	(13.3)	↔	↓		Homs	220	-	9.2	↔	↔
	Lattakia	75	-	-	↔	↔		Lattakia	300	-	58.3	↔	↑
	Quneitra	158	-	12.5	↔	↑		Quneitra	242	(2.0)	(10.0)	↔	↔
	Ar-Raqqa	143	-	6.3	↔	↔		Ar-Raqqa	154	45.8	17.6	↑	↑
	Rural Damascus	88	-	(31.3)	↔	↓		Rural Damascus	350	(9.0)	13.8	↔	↑
	As-Sweida	75	-	-	↔	↔		As-Sweida	375	-	11.3	↔	↑
	Tartous	63	-	0.3	↔	↔		Tartous	275	(7.0)	48.4	↔	↑
Bulgur (kg)	Aleppo	228	5.1	(20.8)	↔	↓	Fish (Sardine, canned)	Aleppo	242	(3.8)	(23.6)	↔	↓
	Damascus	288	-	(1.6)	↔	↔		Damascus	350	-	-	↔	↔
	Dar'a	200	-	-	↔	↔		Dar'a	250	-	-	↔	↔
	Deir-ez-Zor	713	-	31.3	↔	↑		Deir-ez-Zor	725	-	(1.5)	↔	↔
	Idleb	240	7.8	6.7	↔	↔		Idleb	225	(10.0)	(15.8)	↔	↓
	Hama	292	3.0	(6.0)	↔	↔		Hama	275	(2.8)	11.5	↔	↑
	Al- Hasakeh	237	(0.4)	(43.1)	↔	↓		Al- Hasakeh	250	-	(18.8)	↔	↓
	Homs	260	6.8	1.1	↔	↔		Homs	247	-	(1.9)	↔	↔
	Lattakia	295	-	6.5	↔	↔		Lattakia	263	-	8.1	↔	↔
	Quneitra	245	3.7	8.0	↔	↔		Quneitra	239	(2.4)	(2.4)	↔	↔
	Ar-Raqqa	300	8.3	(0.7)	↔	↔		Ar-Raqqa	332	5.1	9.0	↔	↔
	Rural Damascus	300	-	-	↔	↔		Rural Damascus	275	-	(4.5)	↔	↔
	As-Sweida	300	-	-	↔	↔		As-Sweida	275	-	-	↔	↔
	Tartous	338	(0.3)	12.5	↔								

Table 1. Market Price of Main Commodities in Syrian Pounds													
Commodity	Governorate	Current Price	Price change (%)	Price change (%)	Average Change	Average Change	Commodity	Governorate	Current Price	Price change (%)	Price change (%)	Average Change	Average Change
			1M	6 M	1M	6 M				1M	6 M		
Bread Public (1.5 kg)	Aleppo	114	10.0	(18.7)	↑	↓	Date (kg)	Aleppo	994	7.2	(12.4)	↔	↓
	Damascus	50	-	-	↔	↔		Damascus	1,100	11.1	14.7	↑	↑
	Dar'a	50	-	-	↔	↔		Dar'a	1,050	10.6	10.6	↑	↑
	Deir-ez-Zor	100	-	-	↔	↔		Deir-ez-Zor	2,525	-	58.3	↔	↑
	Idleb	275	10.0	10.0	↑	↑		Idleb	500	11.1	11.1	↑	↑
	Hama	50	-	(25.0)	↔	↓		Hama	1,100	14.4	13.4	↑	↑
	Al- Hasakeh	50	-	-	↔	↔		Al- Hasakeh	1,000	-	83.3	↔	↑
	Homs	50	-	-	↔	↔		Homs	1,100	16.4	23.3	↑	↑
	Lattakia	50	-	-	↔	↔		Lattakia	1,200	4.5	50.0	↔	↑
	Quneitra	80	(6.0)	-	↔	↔		Quneitra	1,075	10.4	15.9	↑	↑
	Ar-Raqqa	105	3.3	3.3	↔	↔		Ar-Raqqa	1,000	71.4	96.2	↑	↑
	Rural Damascus	50	-	-	↔	↔		Rural Damascus	1,400	3.8	3.8	↔	↔
	As-Sweida	50	-	-	↔	↔		As-Sweida	1,250	3.6	34.5	↔	↑
	Tartous	50	-	-	↔	↔		Tartous	1,225	14.3	65.2	↑	↑
Bread Shops (1.5 kg)	Aleppo	193	4.6	(19.9)	↔	↓	Diesel (L)	Aleppo	331	(3.5)	0.6	↔	↔
	Damascus	105	(6.7)	(30.0)	↔	↓		Damascus	308	(5.4)	30.8	↔	↑
	Dar'a	150	-	-	↔	↔		Dar'a	293	(1.9)	(15.3)	↔	↓
	Deir-ez-Zor	175	-	37.5	↔	↑		Deir-ez-Zor	1,113	-	(0.8)	↔	↔
	Idleb	300	4.5	4.5	↔	↔		Idleb	270	(1.8)	(22.9)	↔	↓
	Hama	67	11.1	(46.8)	↑	↓		Hama	375	-	7.1	↔	↔
	Al- Hasakeh	138	-	22.5	↔	↑		Al- Hasakeh	85	-	36.7	↔	↑
	Homs	102	(4.2)	(13.3)	↔	↓		Homs	220	-	9.2	↔	↔
	Lattakia	75	-	-	↔	↔		Lattakia	300	-	58.3	↔	↑
	Quneitra	158	-	12.5	↔	↑		Quneitra	242	(2.0)	(10.0)	↔	↔
	Ar-Raqqa	143	-	6.3	↔	↔		Ar-Raqqa	154	45.8	17.6	↑	↑
	Rural Damascus	88	-	(31.3)	↔	↓		Rural Damascus	350	(9.0)	13.8	↔	↑
	As-Sweida	75	-	-	↔	↔		As-Sweida	375	-	11.3	↔	↑
	Tartous	63	-	0.3	↔	↔		Tartous	275	(7.0)	48.4	↔	↑
Bulgur (kg)	Aleppo	228	5.1	(20.8)	↔	↓	Fish (Sardine, canned)	Aleppo	242	(3.8)	(23.6)	↔	↓
	Damascus	288	-	(1.6)	↔	↔		Damascus	350	-	-	↔	↔
	Dar'a	200	-	-	↔	↔		Dar'a	250	-	-	↔	↔
	Deir-ez-Zor	713	-	31.3	↔	↑		Deir-ez-Zor	725	-	(1.5)	↔	↔
	Idleb	240	7.8	6.7	↔	↔		Idleb	225	(10.0)	(15.8)	↔	↓
	Hama	292	3.0	(6.0)	↔	↔		Hama	275	(2.8)	11.5	↔	↑
	Al- Hasakeh	237	(0.4)	(43.1)	↔	↓		Al- Hasakeh	250	-	(18.8)	↔	↓
	Homs	260	6.8	1.1	↔	↔		Homs	247	-	(1.9)	↔	↔
	Lattakia	295	-	6.5	↔	↔		Lattakia	263	-	8.1	↔	↔
	Quneitra	245	3.7	8.0	↔	↔		Quneitra	239	(2.4)	(2.4)	↔	↔
	Ar-Raqqa	300	8.3	(0.7)	↔	↔		Ar-Raqqa	332	5.1	9.0	↔	↔
	Rural Damascus	300	-	-	↔	↔		Rural Damascus	275	-	(4.5)	↔	↔
	As-Sweida	300	-	-	↔	↔		As-Sweida	275	-	-	↔	↔
	Tartous	338	(0.3)	12.5	↔	↑		Tartous	325	3.0	-	↔	↔
Butane Cylinder (10 kg)	Aleppo	3,525	5.5	(29.2)	↔	↓	Fish (tuna, canned)	Aleppo	356	(1.0)	(20.1)	↔	↓
	Damascus	2,700	-	(5.7)	↔	↔		Damascus	463	-	-	↔	↔
	Dar'a	5,850	2.9	4.5	↔	↔		Dar'a	400	-	-	↔	↔
	Deir-ez-Zor	9,250	-	4.2	↔	↔		Deir-ez-Zor	925	-	(18.8)	↔	↓
	Idleb	8,500	(9.1)	7.6	↔	↔		Idleb	325	8.3	8.3	↔	↔
	Hama	3,400	(2.9)	(27.0)	↔	↓		Hama	575	11.5	33.8	↑	↑
	Al- Hasakeh	3,000	4.3	0.4	↔	↔		Al- Hasakeh	438	-	-	↔	↔
	Homs	2,633	-	(9.8)	↔	↔		Homs	440	2.4	(1.8)	↔	↔
	Lattakia	3,100	-	8.9	↔	↔		Lattakia	363	-	-	↔	↔
	Quneitra	5,850	2.9	7.3	↔	↔		Quneitra	448	6.1	36.1	↔	↑
	Ar-Raqqa	8,125	(1.1)	7.5	↔	↔		Ar-Raqqa	475	8.4	15.0	↔	↑
	Rural Damascus	2,800	1.8	(28.6)	↔	↓		Rural Damascus	438	3.1	(1.9)	↔	↔
	As-Sweida	2,900	-	(6.4)	↔	↔		As-Sweida	425	-	(2.8)	↔	↔
	Tartous	3,000	-	(12.5)	↔	↓		Tartous	388	(3.6)	2.8	↔	↔
Cheese (kg)	Aleppo	1,425	(0.8)	(25.9)	↔	↓	Iodised salt (kg)	Aleppo	178	5.5	35.7	↔	↑
	Damascus	1,300	-	(16.0)	↔	↔		Damascus	125	-	-	↔	↔
	Dar'a	900	11.0	(24.8)	↑	↓		Dar'a	155	(2.9)	(10.0)	↔	↔
	Deir-ez-Zor	2,500	-	10.0	↔	↑		Deir-ez-Zor	550	-	40.9	↔	↑
	Idleb	1,000	11.1	11.1	↑	↑		Idleb	100	11.1	-	↑	↔
	Hama	1,483	1.3	2.0	↔	↔		Hama	150	5.1	70.4	↔	↑
	Al- Hasakeh	1,200	-	6.2	↔	↔		Al- Hasakeh	100	16.7	16.7	↑	↑
	Homs	1,233	0.2	(5.1)	↔	↔		Homs	152	10.4	40.4	↑	↑
	Lattakia	1,400	-	2.0	↔	↔		Lattakia	50	-	(8.3)	↔	↔
	Quneitra	1,075	(5.0)	1.8	↔	↔		Quneitra	105	-	-	↔	↔
	Ar-Raqqa	1,550	-	69.9	↔	↑		Ar-Raqqa	200	100.0	97.1	↑	↑
	Rural Damascus	1,350	8.0	5.8	↔	↔		Rural Damascus	150	-	10.0	↔	↑
	As-Sweida	1,500	-	15.4	↔	↑		As-Sweida	150	-	-	↔	↔
	Tartous	1,450	(0.9)	13.5	↔	↑		Tartous	63	-	(14.3)	↔	↓
Chickpeas (kg)	Aleppo	463	7.3	21.1	↔	↑	Lentils (kg)	Aleppo	475	(5.1)	(27.3)	↔	↓
	Damascus	700	7.7	36.7	↔	↑		Damascus	663	(1.9)	(5.4)	↔	↔
	Dar'a	375	-	6.3	↔	↔		Dar'a	500	-	15.2	↔	↑
	Deir-ez-Zor	1,050	-	(1.7)	↔	↔		Deir-ez-Zor	600	-	(25.2)	↔	↓
	Idleb	275	(4.5)	(0.8)	↔	↔		Idleb	500	-	5.3	↔	↔
	Hama	608	4.9	24.0	↔	↑		Hama	633	2.7	2.1	↔	↔
	Al- Hasakeh	613	-	(10.9)	↔	↓		Al- Hasakeh	475	-	(25.5)	↔	↓
	Homs	542	8.3	3.2	↔	↔		Homs	583	-	(2.4)	↔	↔
	Lattakia	775	5.3	29.0	↔	↑		Lattakia	635	1.1	(5.7)	↔	↔
	Quneitra	513	(2.1)	8.9	↔	↔		Quneitra	475	(3.5)	(7.9)	↔	↔
	Ar-Raqqa	657	2.9	4.9	↔	↔		Ar-Raqqa	788	6.7	22.0	↔	↑
	Rural Damascus	850	(5.6)	55.8	↔	↑		Rural Damascus	593	(1.2)	(21.3)	↔	↓
	As-Sweida	775	3.6	19.6	↔	↑		As-Sweida	900	-	9.2	↔	↔
	Tartous	675	6.3	28.6	↔	↑		Tartous	625	0.2	4.2	↔	↔
Key:	↑	Prices increase above normal price fluctuation											
	↔	Normal Price Fluctuation											
	↓	Price decrease below normal price fluctuation											

Commodity Price Comparison - Q3 2023													
Commodity	Governorate	Current Price	Price change (%)	Price change (%)	Average Change	Average Change	Commodity	Governorate	Current Price	Price change (%)	Price change (%)	Average Change	Average Change
			1M	6 M	1M	6 M				1M	6 M	1M	6 M
Meat (beef, kg)	Aleppo	3,225	-	(11.5)	↔	↓	Tea (kg)	Aleppo	3,663	(0.6)	(13.2)	↔	↓
	Damascus	4,150	10.9	23.9	↑	↑		Damascus	3,400	-	0.8	↔	↔
	Dar'a	3,500	2.1	4.3	↔	↔		Dar'a	4,025	1.3	7.6	↔	↔
	Deir-ez-Zor	9,500	-	105.3	↔	↑		Deir-ez-Zor	9,688	-	8.6	↔	↔
	Idleb	2,700	-	(3.6)	↔	↔		Idleb	3,400	(2.9)	1.5	↔	↔
	Hama	3,900	6.2	4.3	↔	↔		Hama	3,767	(2.1)	4.2	↔	↔
	Al- Hasakeh	3,050	10.9	19.6	↑	↑		Al- Hasakeh	3,475	0.2	0.9	↔	↔
	Homs	4,233	5.2	20.3	↔	↑		Homs	3,667	2.2	13.9	↔	↑
	Lattakia	4,050	8.1	22.3	↔	↑		Lattakia	3,400	3.0	29.7	↔	↑
	Quneitra	3,225	2.3	(1.6)	↔	↔		Quneitra	3,500	-	-	↔	↔
	Ar-Raqqa	2,750	20.0	15.5	↑	↑		Ar-Raqqa	3,975	2.2	8.5	↔	↔
	Rural Damascus	4,325	8.1	21.9	↔	↑		Rural Damascus	3,650	-	(2.7)	↔	↔
	As-Sweida	3,600	-	8.3	↔	↔		As-Sweida	3,500	-	(0.8)	↔	↔
Oil (L)	Tartous	4,100	8.3	19.3	↔	↑	Tomato paste (kg)	Tartous	2,500	(0.5)	(3.9)	↔	↔
	Aleppo	706	(1.0)	(23.7)	↔	↓		Aleppo	1,150	(0.4)	(13.7)	↔	↓
	Damascus	750	-	-	↔	↔		Damascus	850	-	1.7	↔	↔
	Dar'a	700	(1.5)	(2.9)	↔	↔		Dar'a	650	-	69.4	↔	↑
	Deir-ez-Zor	2,350	-	18.8	↔	↑		Deir-ez-Zor	3,938	-	17.3	↔	↑
	Idleb	625	(3.8)	(5.6)	↔	↔		Idleb	500	42.9	42.9	↑	↑
	Hama	775	(0.6)	(5.2)	↔	↔		Hama	900	(3.5)	(14.1)	↔	↓
	Al- Hasakeh	600	4.5	(3.4)	↔	↔		Al- Hasakeh	488	-	(18.8)	↔	↓
	Homs	758	(2.2)	13.9	↔	↑		Homs	967	206.1	(6.8)	↑	↔
	Lattakia	713	(1.8)	(7.4)	↔	↔		Lattakia	725	(3.1)	(3.3)	↔	↔
	Quneitra	788	-	-	↔	↔		Quneitra	413	-	(4.4)	↔	↔
	Ar-Raqqa	944	3.0	9.7	↔	↔		Ar-Raqqa	732	16.5	19.1	↑	↑
	Rural Damascus	763	(1.6)	(12.8)	↔	↓		Rural Damascus	900	-	6.3	↔	↔
	As-Sweida	825	-	3.1	↔	↔		As-Sweida	550	-	10.0	↔	↑
Parsley (packet)	Tartous	750	-	1.7	↔	↔	Tomatoe (kg)	Tartous	725	-	1.9	↔	↔
	Aleppo	41	5.7	(72.8)	↔	↓		Aleppo	181	(61.0)	(32.3)	↓	↓
	Damascus	44	(9.1)	(12.0)	↔	↓		Damascus	194	(41.3)	(5.7)	↓	↔
	Dar'a	88	-	150.0	↔	↑		Dar'a	113	(57.0)	(54.8)	↓	↓
	Deir-ez-Zor	150	-	-	↔	↔		Deir-ez-Zor	2,000	-	22.1	↔	↑
	Idleb	50	(8.3)	-	↔	↔		Idleb	500	-	-	↔	↔
	Hama	53	(28.7)	6.7	↓	↔		Hama	172	(21.4)	(16.6)	↓	↓
	Al- Hasakeh	89	(11.0)	18.7	↓	↑		Al- Hasakeh	275	10.0	(11.9)	↑	↓
	Homs	50	(11.1)	(19.4)	↓	↓		Homs	193	(22.0)	(7.0)	↓	↔
	Lattakia	88	6.8	75.0	↔	↑		Lattakia	163	(48.6)	(18.8)	↓	↓
	Quneitra	35	(6.3)	(6.7)	↔	↔		Quneitra	244	(18.7)	52.6	↓	↑
	Ar-Raqqa	94	8.7	10.7	↔	↑		Ar-Raqqa	275	-	(33.3)	↔	↓
	Rural Damascus	43	(4.4)	(21.2)	↔	↓		Rural Damascus	213	(35.2)	(1.9)	↓	↔
	As-Sweida	75	-	18.2	↔	↑		As-Sweida	208	(37.0)	4.0	↓	↔
Pasta (kg)	Tartous	55	1.7	10.1	↔	↑	Unskilled Labor wage	Tartous	175	(49.7)	(16.7)	↓	↓
	Aleppo	497	0.6	1.4	↔	↔		Aleppo	1,950	4.1	45.8	↔	↑
	Damascus	500	-	-	↔	↔		Damascus	1,500	-	-	↔	↔
	Dar'a	575	-	21.1	↔	↑		Dar'a	1,200	3.3	11.5	↔	↑
	Deir-ez-Zor	1,838	-	21.5	↔	↑		Deir-ez-Zor	1,150	-	-	↔	↔
	Idleb	100	(14.9)	-	↓	↔		Idleb	2,000	2.6	18.1	↔	↑
	Hama	567	2.9	64.2	↔	↑		Hama	1,900	5.6	27.5	↔	↑
	Al- Hasakeh	275	5.0	(18.4)	↔	↓		Al- Hasakeh	950	8.3	8.3	↔	↔
	Homs	567	0.9	76.6	↔	↑		Homs	1,633	6.5	55.0	↔	↑
	Lattakia	275	-	7.3	↔	↔		Lattakia	2,000	-	5.6	↔	↔
	Quneitra	432	6.3	72.5	↔	↑		Quneitra	1,350	-	7.7	↔	↔
	Ar-Raqqa	600	74.1	(6.4)	↑	↔		Ar-Raqqa	1,800	11.8	11.8	↑	↑
	Rural Damascus	500	(2.4)	(19.9)	↔	↓		Rural Damascus	1,500	-	-	↔	↔
	As-Sweida	475	-	-	↔	↔		As-Sweida	1,900	5.6	26.7	↔	↑
Rice (kg)	Tartous	263	(3.7)	(2.0)	↔	↔	Wheat Flour (kg)	Tartous	1,850	(0.7)	11.1	↔	↑
	Aleppo	507	(0.9)	(16.2)	↔	↓		Aleppo	239	(2.0)	(25.4)	↔	↓
	Damascus	425	-	-	↔	↔		Damascus	288	(2.3)	2.9	↔	↔
	Dar'a	488	-	-	↔	↔		Dar'a	213	-	-	↔	↔
	Deir-ez-Zor	725	-	(18.2)	↔	↓		Deir-ez-Zor	375	-	(9.2)	↔	↔
	Idleb	500	-	5.6	↔	↔		Idleb	213	-	-	↔	↔
	Hama	558	0.3	9.3	↔	↔		Hama	273	(2.5)	22.2	↔	↑
	Al- Hasakeh	519	4.2	(33.3)	↔	↓		Al- Hasakeh	225	-	(11.5)	↔	↓
	Homs	507	(1.6)	3.2	↔	↔		Homs	252	6.5	18.2	↔	↑
	Lattakia	500	-	-	↔	↔		Lattakia	263	-	6.4	↔	↔
	Quneitra	475	-	12.5	↔	↑		Quneitra	205	-	-	↔	↔
	Ar-Raqqa	769	5.3	17.5	↔	↑		Ar-Raqqa	300	-	(17.9)	↔	↓
	Rural Damascus	475	-	(4.5)	↔	↔		Rural Damascus	270	(4.1)	(16.3)	↔	↓
	As-Sweida	325	-	(5.8)	↔	↔		As-Sweida	275	-	5.0	↔	↔
Sheep 2Y old Male	Tartous	550	5.0	5.0	↔	↔	White beans (kg)	Tartous	230	-	(0.9)	↔	↔
	Aleppo	97,000	18.8	61.0	↑	↑		Aleppo	494	1.1	(5.6)	↔	↔
	Damascus	105,000	7.6	21.2	↔	↑		Damascus	475	-	-	↔	↔
	Dar'a	102,500	3.7	40.6	↔	↑		Dar'a	400	-	5.6	↔	↔
	Deir-ez-Zor	257,500	-	28.4	↔	↑		Deir-ez-Zor	900	-	(22.6)	↔	↓
	Idleb	78,000	6.1	0.6	↔	↔		Idleb	350	12.0	-	↑	↔
	Hama	161,667	15.6	105.4	↑	↑		Hama	602	(3.7)	7.6	↔	↔
	Al- Hasakeh	70,000	-	(6.7)	↔	↔		Al- Hasakeh	525	5.6	(32.5)	↔	↓
	Homs	111,333	3.3	40.3	↔	↑		Homs	575	4.6	6.5	↔	↔
	Lattakia	90,000	6.3	20.0	↔	↑		Lattakia	675	3.3	2.0	↔	↔
	Quneitra	116,250	-	14.7	↔	↑		Quneitra	440	1.7	17.9	↔	↑
	Ar-Raqqa	57,500	4.2	-	↔	↔		Ar-Raqqa	744	2.9	(13.1)	↔	↓
	Rural Damascus	105,050	5.5	14.8	↔	↑		Rural Damascus	550	-	2.9	↔	↔
	As-Sweida	86,625	(3.1)	21.2	↔	↑		As-Sweida	525	-	-	↔	↔
Sugar (kg)	Tartous	90,200	1.4	33.3	↔	↑	Yogurt (kg)	Tartous	600	3.9	15.3	↔	↑
	Aleppo	360	(3.1)	(34.0)	↔	↓		Aleppo	369	(2.8)	(35.5)	↔	↓
	Damascus	383	(4.3)	(10.0)	↔	↔		Damascus	275	-	(12.2)	↔	↓
	Dar'a	383	2.0	(12.4)	↔	↓		Dar'a	313	3.1	20.8	↔	↑
	Deir-ez-Zor	1,975	-	2.2	↔	↔		Deir-ez-Zor	950	-	15.3	↔	↑
	Idleb	450	1.1	-	↔	↔		Idleb	250	11.1	18.1	↑	↑
	Hama	392	(2.1)	(8.8)	↔	↔		Hama	467	(4.5)	7.5	↔	↔
	Al- Hasakeh	425	4.6	(20.9)	↔	↓		Al- Hasakeh	288	5.0	43.8	↔	↑
	Homs	352	(4.0)	(5.5)	↔	↔		Homs	298	(1.3)	9.0	↔	↔
	Lattakia	400	1.4	(4.9)	↔	↔		Lattakia	275	-	4.3	↔	↔
	Quneitra	403	(2.5)	(4.7)	↔	↔		Quneitra	225	(5.6)	2.1	↔	↔
	Ar-Raqqa	525	4.5	(1.9)	↔	↔		Ar-Raqqa	350	7.1	85.7	↔	↑
	Rural Damascus	372	(3.3)	(24.9)	↔	↓		Rural Damascus	250	-	(20.8)	↔	↓
	As-Sweida	382	(3.1)	(9.7)	↔	↔		As-Sweida	275	-	-	↔	↔
	Tartous	400	-	(5.6)	↔	↔		Tartous	300	-	12.7	↔	↑