



© WFP/Mohammed Albahbahani

Issue No. 12
July 2017

IRAQ Market Monitor Report

[Click here to read the report online](#)

Highlights

- Large-scale fighting in Mosul is over, but the life-threatening risks faced by Iraqi civilians continue and become more diversified.
- Livelihoods and infrastructure in return areas are severely affected by the conflict. West Mosul will need sustained and comprehensive humanitarian assistance.
- An average 2% decrease in the cost of the minimum food basket has been registered in the country. Kirkuk shows an upsurge in food prices.
- The wage of unskilled labour has increased by 5% across the country. There is nevertheless a notable divergence between wages in hard-to-reach areas and the rest of the country (-26%)
- Key informants reported an increase in food availability (mostly thanks to food assistance), however they are suffering from lack of job opportunity.

Socioeconomic Background

Large-scale fighting in Mosul is over, but the life-threatening risks faced by Iraqi civilians continue and become more diversified. There is widespread contamination through sophisticated explosive devices, pockets of volatility and reports of violence countrywide¹. Livelihoods in return areas were severely affected by the disruption of the local labour economies during years of conflict and ISIL occupation. Government employment is the most

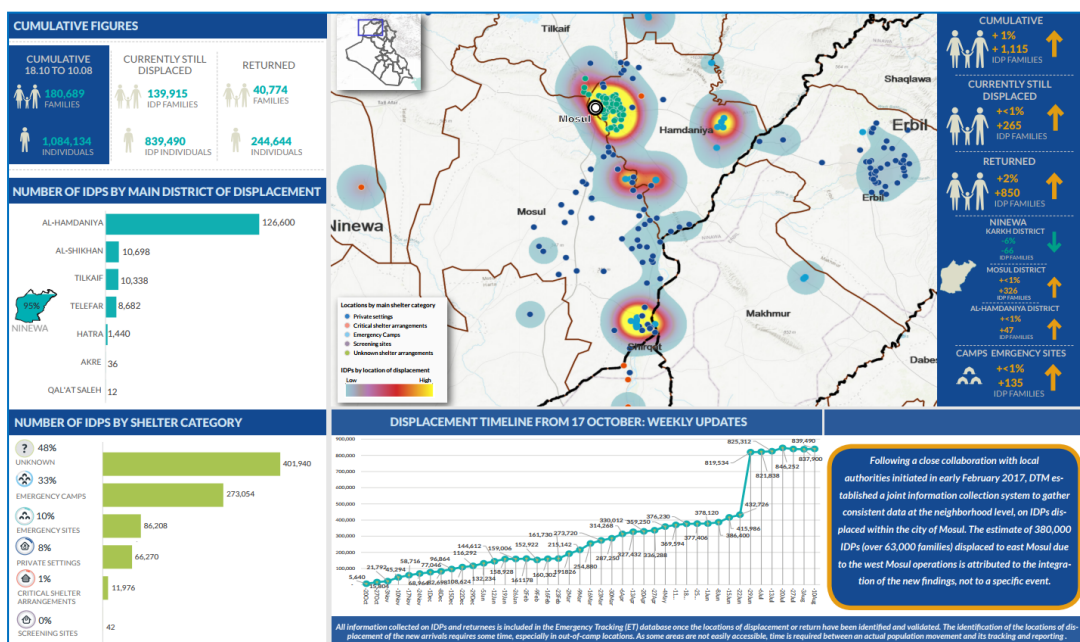
stable, although people in conflict-affected areas report delays in salary payments, sometimes for months. An estimated 32,000 West Mosul homes are destroyed, leaving 200,000 people homeless. While East Mosul slowly gets back on its feet, the people of West Mosul will need comprehensive humanitarian assistance for some time. The latest displacement updates are presented in the dashboard below².

Contacts

Sally Haydock
sally.haydock@wfp.org

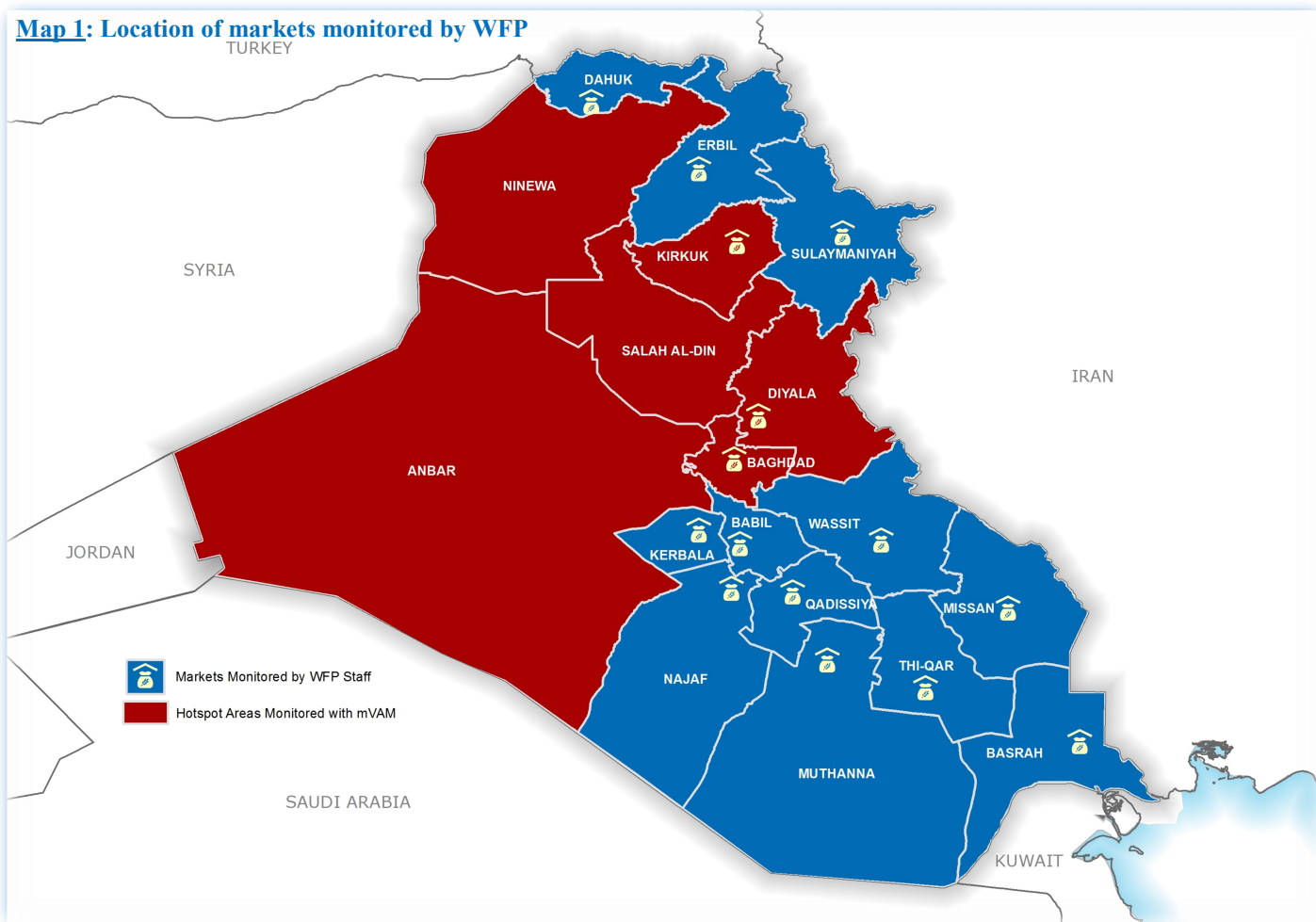
Maha Ahmed
maha.ahmed@wfp.org

Asif Niazi
asif.niazi@wfp.org



¹ OCHA IRAQ: Humanitarian Bulletin Iraq July 2017 | Issued on 1 August

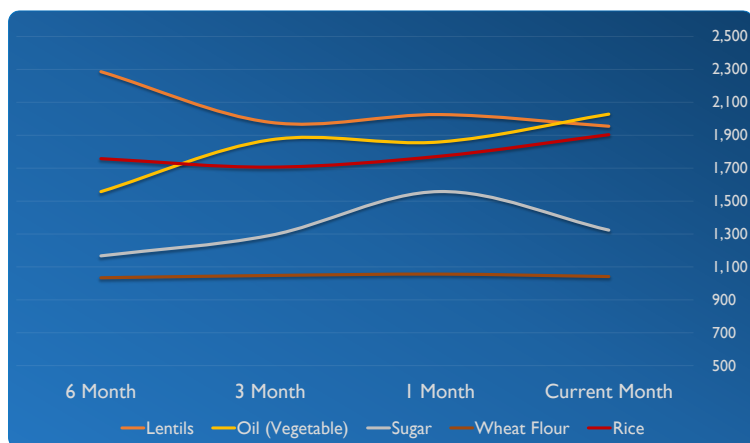
² IOM IRAQ: Displacement Tracking Matrix Emergency Tracking| Factsheet #41 (10 August 2017)

Map 1: Location of markets monitored by WFP

Food National Price Trends

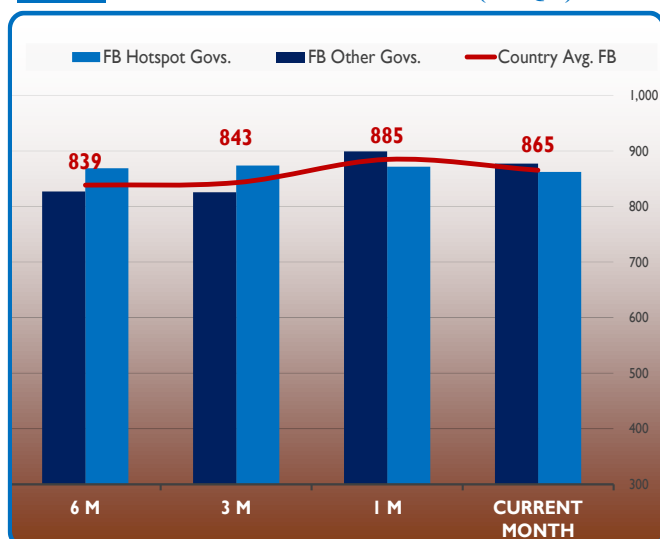
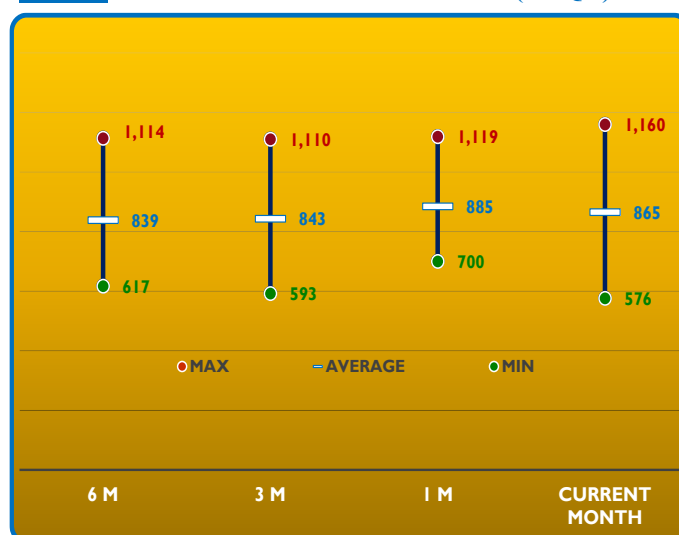
Food prices in Iraq in July continued following divergent paths at national level (Chart 1). The price of rice, in line with its recent upward trend, increased by 7% compared to June 2017. Similarly, vegetable oil increased by 9% this month, in line with an increasing trend registered in the last six months. On the other hand wheat flour is

now found at 1% lower prices than in June, confirming the stable trend of last year. Prices of meat (beef) decreased by 1% compared to the previous month, while fresh milk and sugar witnessed a sharp drop (15%) in price. The national price of lentils decreased by 4%. The average price of onion hasn't changed since last month.

Chart 1: Price Trend of Main Food Commodities (in IQD/Unit)

Apart from lentils, onions and fresh milk, other main commodities have generally followed the national trend across governorates. Only Dohuk

saw a sharp increase (20%) in meat prices in July, against the negative national trend. Rice saw a general increase across the country, except for Sulaimaniyah and Thi Qar that registered a considerable reduction in prices. On the other hand the decreasing national trend for sugar prices is inverted in Anbar (10%) and Dohuk (11%). Price of wheat flour has only increased in Qadisiya and Dohuk. Fresh milk can be found remarkably cheaper compared to June in Basrah, Diyala, Dohuk and Missan while considerably more expensive in Anbar, Baghdad, Kirkuk and Sulaimaniyah. Similarly, lentils are found to be less costly in Baghdad, Basrah, Missan,

Chart 2: Cost of Minimum Food Basket (in IQD)**Chart 3: Min. vs. Max. Cost of Food Basket (in IQD)**

Najaf and Salah Al-Din, while at higher prices in Babylon, Kirkuk and Qadisiya. Finally an increase in onions price has been registered in Anbar, Kirkuk, Ninewa and Salah Al-Din, while a sharp decrease was found in Baghdad, Basrah, Diyala, Missan, Muthanna, Qadissyia and Sulaimaniyah.

Deducing from the above analysis, prices in some governorates behaved extremely. In the case of Anbar, all commodities are found much more expensive (>5%) in July compared to June, except for wheat flour that registered a decrease of 7%. Similarly Kirkuk food prices were subject to an upsurge. Fresh milk (19%), lentils (13%), onions (19%) and rice (44%) were among the main commodities that drove this increase. On the other hand meat (-13%), wheat flour (-7%) and sugar (-53%) partially alleviated the burden on households. An opposite case is Sulaimaniyah that showed general decrease in food prices led by rice (-46%) and milk (-26%), with the only exception of wheat flour and onions both found at 36% higher prices than in June.

The above described fluctuations have resulted in an overall decrease in the cost of the food basket by 2%, bringing the level closer to the one of the months preceding Ramadan (Chart 2). Nevertheless, the decrease is not equally distributed among governorates. The cost of the minimum food basket in the six hard-to-reach areas exhibited a decrease of 1%, while the in the rest of the country it decreased by 2%. Prices in the hard-to-reach areas are still lower than in the rest of the country. Nevertheless it has also to be considered that no data were collected for Thi-Qar and Wassit in July. At governorate level, the largest decrease in the cost of the minimum food basket occurred in Sulaimaniyah, where the price decreased by 18%, which, after the -17% of the previous month brought the price of the food basket down to IQD 576. Another important decrease was recorded in Baghdad (-9%). The largest increase occurred in Kirkuk (4%), making it the most expensive in the country at IQD 1,160. Due to this divergence of prices, the level of integration of markets across the country has been less satisfactory than in the previous months (Chart 3).

Regarding staple commodities, the price of food items tends to follow a common trend in all governorates, with few exceptions. Vegetable oil was for instance found at IQD 5,575 in Kirkuk and at IQD 1,500 in Dohuk. Impressive is the case of onions, that can be found at IQD 3,390/kg in Kirkuk and IQD 500/kg in Muthanna. Details by commodity and by governorate are presented in Annex 1 and Annex 2.

It must be taken into consideration that averages don't include locations where food commodities are reported as not available or where key informants have not answered the calls (see Methodology).

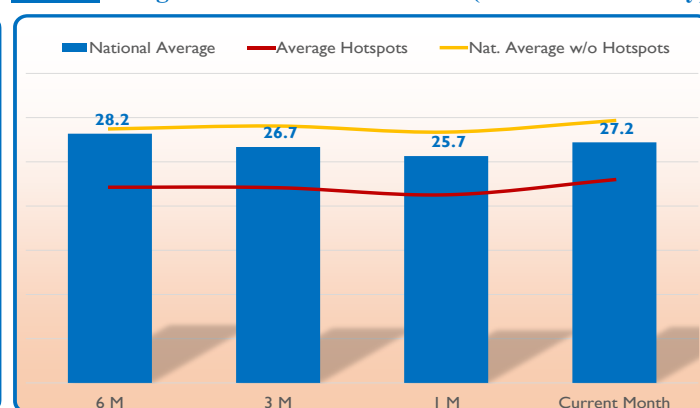
Unskilled Labour Wages and Terms of Trade (ToT)

The wage of unskilled labour has increased by 5% across the country. This increase is led by non-hard-to-reach areas alone and brought to higher divergence with hotspot locations, where salaries remain low (approx. 26% lower than the rest of the country) (Chart 4). Despite a 9% increase, jobs in Diyala are still the least paid at IQD 16,350/day. Increases in the wages are also registered in Baghdad (14%) and Salah Al-Din (9%). On the other hand, displacement to the area keeps affecting the salaries of workers in Kirkuk that saw the average daily wage for unskilled labour decrease by 7% in July. Looking at governorate level, Qadissyia, in line with the last year development, offers the highest daily wages at IQD 31,250 (4% higher than in June). The wage-to-food terms of trade (ToT) has increased by 6% at the national level due to the higher salaries and the lower food prices. In hard-to-reach areas it increased from 21 to 23 food baskets per day of work, while in the rest of the country it increased by 5% (Chart 5). The ToT in Kirkuk (-10%) decreased notably, while Baghdad (25%), Ninewa (11%) and Sulaimaniyah (21%) it showed the highest increase. As a result, the highest ToT in the country is found in Sulaimaniyah at 43.4 and the lowest in Najaf at 18.1.

Chart 4: Cost of Unskilled Labour per day (in IQD)



Chart 5: Wage-to-Food Terms of Trade (in food baskets/day)



Focus on Hard-to-Reach Areas

Hard-to-reach areas are locations widespread in six governorates (Anbar, Baghdad, Diyala, Kirkuk, Ninewa and Salah Al-Din) where WFP complements its traditional data collection with mVAM methodology. Looking in details at these governorates, the food basket cost in the last six months has followed different trends.

Chart 6: Cost of Food Basket in Hotspot Areas (in IQD)

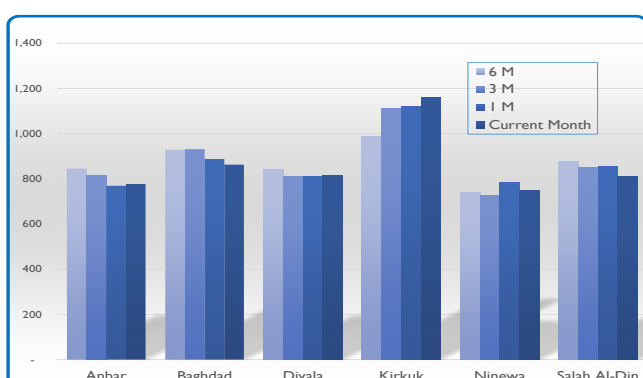
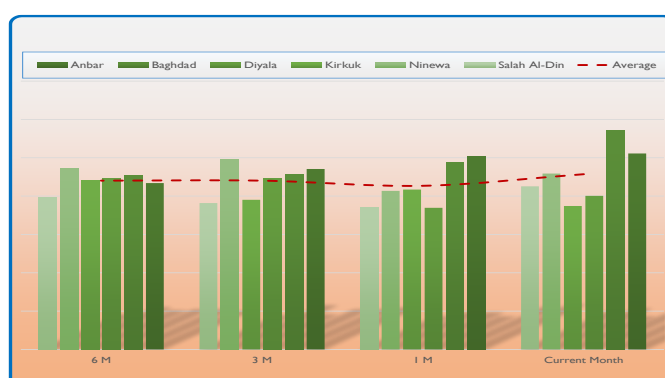


Chart 7: Wage-to-Food ToT in Hotspot Areas



July was generally stable in the hotspot locations, with exception of Kirkuk that saw an increase of 4% and Baghdad (-9%), Ninewa (-5%) and Salah Al-Din (-18%) which instead registered a drop in the cost of the food basket (Chart 6). This reflects into the wage-to-food terms of trade (Chart 7). The highest is found in Baghdad (32.5) and the lowest in Kirkuk (18.7). Key informants reported an increase in food availability (mostly thanks to food assistance), however they are suffering from job opportunity shortages.

Methodology

Market information is collected on weekly basis by WFP field monitors. Additionally WFP in partnership with Islamic Relief Worldwide (IRW) collects market data remotely through mVAM technology from key informants in those governorates where access is restricted, using telephone interviews. Data are then cleaned and consolidated. Monthly averages are used for the Iraq Monthly Monitor Report. Map 1 shows the location of the WFP monitored markets as well as the hard-to-reach areas monitored through mVAM.

Field monitors collect prices for 23 food commodities, 3 fuel items, 7 hygiene commodities and the cost of unskilled labour for one day of work. WFP field monitors cover 12 governorates where access is not restricted plus three additional governorates (Kirkuk, Baghdad and Diyala) when the security situation allows. IRW key informants collect market prices of 8 main food commodities and the daily wage of unskilled labour from six hard-to-reach areas in central and northern governorates of Iraq (Anbar, Baghdad, Diyala, Kirkuk, Ninewa and Salah Al-Din) through mVAM technology.

The report is based on the analyses produced by the Integrated Market Surveillance Tool (IMST). The IMST is an agile market monitoring tool that was developed for WFP Iraq and is aimed at storing raw data collected by field monitors and key informants, and creating contextualized analyses. The tool analyzes trends of main food and non-food commodities, minimum food basket, and provides an indication of how much the markets are integrated within and across governorates. Food and non-food prices are analyzed against previous periods, including key baselines, such as the pre-crisis values of February 2015. Non-food items prices are not reported in this report unless a change in the price level has an impact on food security.

The IMST includes information regarding the availability of main food commodities in hard-to-reach locations, which is collected by key informants. The classification of the availability is based on the monthly averages. A commodity is classified as **Available** when it is found available on every visit in the key market of a specific governorate; **Widely Available** when for only one visit the availability is not full; **Sporadically Available** when in at least half of the visits, the commodity is recorded as rare in the market; a commodity is **Mostly Not Available** when it was found only in rare cases in a governorate during the analyzed month; finally a commodity is classified as **Not Available** when it is not found in any market of a governorate at all.

AV	Available
WAD	Widely Available
SAV	Sporadically Available
MNA	Mostly Not Available
NA	Not Available

The minimum food basket monitored by WFP contains five food commodities. The quantities are adjusted against the survival caloric intake needs. The five commodities are wheat flour, sugar, rice, vegetable oil and onion.

The IMST also provides specific and customizable analyses on hard-to-reach areas, at district and sub-district level. This allows to detect local issues regarding market price, availability as well as any other information regarding the specific market catchment area, including security and coping mechanism commonly adopted in the area. Given the unstable context the IMST is flexible enough to allow ad hoc analysis whenever required.

The Iraq Market Monitor Report is issued since August 2016 on a monthly basis.

NOTE: Due to the long-lasting conflict in Falluja and the related impact on markets, to avoid distortions on average price analyses by governorate and maintain consistency over time, the Falluja district has been removed from all quantitative analyses related to Anbar. Falluja's information and data are analyzed aside in district-level analyses. The same approach has been used with regards to Mosul in Ninewa.

Annex 1: Market Prices by Governorate

Market	Commodity	Current Month	Price Data in Previous Periods				% Change from Stated Period				Direction of change			
		Current Month	1 Month	3 Month	6 Month	12 Month	1 Month	3 Month	6 Month	12 Month	1 Month	3 Month	6 Month	12 Month
Anbar	Fresh Milk	1,901	1,688	1,870	1,958	1,975	13%	2%	-3%	-4%	↓	↓	↓	↓
	Lentils	1,741	1,688	1,719	1,781	2,100	3%	1%	-2%	-17%	↓	↓	↓	↓
	Meat (Beef)	11,306	11,000	10,083	9,958	13,900	3%	12%	14%	-19%	↓	↓	↓	↓
	Oil (Vegetable)	1,839	1,750	1,938	1,964	2,425	5%	-5%	-6%	-24%	↓	↓	↓	↓
	Onion	690	625	667	719	867	10%	3%	-4%	-20%	↓	↓	↓	↓
	Rice	1,807	1,688	1,707	1,688	2,608	7%	6%	7%	-31%	↓	↓	↓	↓
	Sugar	1,201	1,094	1,339	1,402	1,450	10%	-10%	-14%	-17%	↓	↓	↓	↓
	Wheat Flour	761	888	1,000	1,126	1,608	-14%	-24%	-32%	-53%	↓	↓	↓	↓
Babylon	Fresh Milk	2,000	2,000	2,000	2,000	2,000	0%	0%	0%	0%	↓	↓	↓	↓
	Lentils	2,500	2,500	2,000	2,000	2,000	0%	25%	25%	25%	↓	↓	↓	↓
	Meat (Beef)	13,000	13,000	13,000	13,000	13,000	0%	0%	0%	0%	↓	↓	↓	↓
	Oil (Vegetable)	2,250	2,250	2,250	2,250	2,250	0%	0%	0%	0%	↓	↓	↓	↓
	Onion	750	1,000	750	750	750	-25%	0%	0%	0%	↓	↓	↓	↓
	Rice	1,500	1,500	1,500	1,500	1,500	0%	0%	0%	0%	↓	↓	↓	↓
	Sugar	1,500	1,500	1,250	1,000	1,333	0%	20%	50%	13%	↓	↓	↓	↓
	Wheat flour	1,000	1,188	1,250	1,250	1,000	-16%	-20%	-20%	0%	↓	↓	↓	↓
Baghdad	Fresh Milk	1,719	1,500	1,672	1,703	1,792	15%	3%	1%	-4%	↓	↓	↓	↓
	Lentils	1,906	2,042	1,875	1,945	2,021	-7%	2%	-2%	-6%	↓	↓	↓	↓
	Meat (Beef)	13,156	14,167	13,031	13,250	13,688	-7%	1%	-1%	-4%	↓	↓	↓	↓
	Oil (Vegetable)	1,853	1,708	1,805	1,909	1,813	8%	3%	-3%	2%	↓	↓	↓	↓
	Onion	734	875	828	797	807	-16%	-11%	-8%	-9%	↓	↓	↓	↓
	Rice	1,825	1,792	2,016	1,953	1,958	2%	-9%	-7%	-7%	↓	↓	↓	↓
	Sugar	1,266	1,458	1,336	1,289	1,302	-13%	-5%	-2%	-3%	↓	↓	↓	↓
	Wheat Flour	1,069	1,167	1,188	1,211	1,208	-8%	-10%	-12%	-12%	↓	↓	↓	↓
Basrah	Fresh Milk	1,500	1,500	2,000	2,000	4,000	0%	-25%	-25%	-63%	↓	↓	↓	↓
	Lentils	2,500	2,333	1,750	2,500	2,000	7%	43%	0%	25%	↓	↓	↓	↓
	Meat (Beef)	13,000	13,000	13,000	13,000	13,000	0%	0%	0%	0%	↓	↓	↓	↓
	Oil (Vegetable)	1,500	1,667	1,500	1,500	1,500	-10%	0%	0%	0%	↓	↓	↓	↓
	Onion	938	583	563	500	500	61%	67%	88%	88%	↓	↓	↓	↓
	Rice	2,000	2,000	1,750	2,000	2,000	0%	14%	0%	0%	↓	↓	↓	↓
	Sugar	1,000	1,000	1,000	1,000	1,000	0%	0%	0%	0%	↓	↓	↓	↓
	Wheat flour	1,000	1,000	1,000	1,000	1,000	0%	0%	0%	0%	↓	↓	↓	↓
Diyala	Fresh Milk	1,613	1,833	1,589	1,578	1,554	-12%	1%	2%	4%	↓	↓	↓	↓
	Lentils	1,713	1,667	1,806	1,836	1,634	3%	-5%	-7%	5%	↓	↓	↓	↓
	Meat (Beef)	12,850	14,667	13,032	13,219	13,179	-12%	-1%	-3%	-2%	↓	↓	↓	↓
	Oil (Vegetable)	1,763	1,833	1,887	1,922	1,911	-4%	-7%	-8%	-8%	↓	↓	↓	↓
	Onion	619	667	663	645	625	-7%	-7%	-4%	-1%	↓	↓	↓	↓
	Rice	1,800	1,750	1,750	1,820	1,741	3%	3%	-1%	3%	↓	↓	↓	↓
	Sugar	1,103	1,167	1,145	1,258	991	-6%	-4%	-12%	11%	↓	↓	↓	↓
	Wheat Flour	975	1,000	944	984	1,188	-3%	3%	-1%	-18%	↓	↓	↓	↓
Dohuk	Fresh Milk	1,500	1,500	1,813	1,500	1,738	0%	-17%	0%	-14%	↓	↓	↓	↓
	Lentils	2,000	2,250	2,346	2,542	2,013	-11%	-15%	-21%	-1%	↓	↓	↓	↓
	Meat (Beef)	14,000	13,750	12,000	10,500	15,000	2%	17%	33%	-7%	↓	↓	↓	↓
	Oil (Vegetable)	1,500	1,500	1,563	1,500	1,500	0%	-4%	0%	0%	↓	↓	↓	↓
	Onion	1,000	750	750	750	663	33%	33%	33%	51%	↓	↓	↓	↓
	Rice	2,000	2,000	1,750	1,813	1,750	0%	14%	10%	14%	↓	↓	↓	↓
	Sugar	1,125	1,250	1,188	1,250	750	-10%	-5%	-10%	50%	↓	↓	↓	↓
	Wheat flour	1,000	1,000	938	875	838	0%	7%	14%	19%	↓	↓	↓	↓
Erbil	Fresh Milk	2,000	2,000	2,000	2,000	1,750	0%	0%	14%	↓	↓	↓	↓	↓
	Lentils	1,700	1,500	2,000	1,500	1,500	13%	-15%	13%	↓	↓	↓	↓	↓
	Meat (Beef)	1,750	14,000	15,000	15,000	15,000	-88%	-88%	-88%	↓	↓	↓	↓	↓
	Oil (Vegetable)	1,500	1,500	1,500	1,500	1,500	0%	0%	0%	0%	↓	↓	↓	↓
	Onion	750	1,150	750	750	750	-35%	0%	0%	0%	↓	↓	↓	↓
	Rice	2,000	1,750	1,400	2,500	1,400	14%	43%	-20%	↓	↓	↓	↓	↓
	Sugar	1,250	900	750	1,000	1,000	39%	67%	25%	↓	↓	↓	↓	↓
	Wheat flour	1,000	600	500	1,000	1,000	67%	100%	0%	↓	↓	↓	↓	↓
Kerbala	Fresh Milk	2,000	2,000	2,000	2,000	2,000	0%	0%	0%	0%	↓	↓	↓	↓
	Lentils	2,000	2,000	2,000	2,000	2,063	0%	0%	0%	-3%	↓	↓	↓	↓
	Meat (Beef)	16,000	16,000	16,000	16,000	16,000	0%	0%	0%	0%	↓	↓	↓	↓
	Oil (Vegetable)	1,750	1,750	1,750	1,813	2,375	0%	0%	-3%	-26%	↓	↓	↓	↓
	Onion	1,000	1,000	1,125	1,000	1,000	0%	-11%	0%	0%	↓	↓	↓	↓
	Rice	2,000	2,000	1,750	2,000	1,938	0%	14%	0%	3%	↓	↓	↓	↓
	Sugar	1,313	1,313	1,250	1,250	1,563	0%	5%	5%	-16%	↓	↓	↓	↓
	Wheat flour	1,250	1,250	1,438	1,250	1,250	0%	-13%	0%	0%	↓	↓	↓	↓
Kirkuk	Fresh Milk	3,988	3,357	3,213	1,800	1,550	19%	24%	122%	157%	↓	↓	↓	↓
	Lentils	1,456	1,292	2,109	2,171	1,478	13%	-31%	-33%	-1%	↓	↓	↓	↓
	Meat (Beef)	13,000	14,857	13,353	13,425	12,967	-13%	-3%	-3%	0%	↓	↓	↓	↓
	Oil (Vegetable)	5,575	5,464	3,890	3,331	1,825	2%	43%	67%	205%	↓	↓	↓	↓
	Onion	3,390	2,857	1,364	1,138	658	19%	149%	198%	415%	↓	↓	↓	↓
	Rice	2,522	1,750	2,234	1,792	2,017	44%	13%	41%	25%	↓	↓	↓	↓
	Sugar	3,403	7,286	4,059	3,731	1,425	-53%	-16%	-9%	139%	↓	↓	↓	↓
	Wheat Flour	1,003	1,083	1,025	1,021	1,083	-7%	-2%	-2%	-7%	↓	↓	↓	↓

Market	Commodity	Current Month	Price Data in Previous Periods				% Change from Stated Period				Direction of change			
		Current Month	1 Month	3 Month	6 Month	12 Month	1 Month	3 Month	6 Month	12 Month	1 Month	3 Month	6 Month	12 Month
Missan	Fresh Milk	1,500	1,500	2,000	2,000	7,000	0%	-25%	-25%	-79%	↓	↓	↓	↓
	Lentils	2,500	2,333	1,750	2,500	2,000	7%	43%	0%	25%	↓	↓	↓	↓
	Meat (Beef)	13,000	13,000	13,000	13,000	14,000	0%	0%	0%	-7%	↓	↓	↓	↓
	Oil (Vegetable)	1,500	1,667	1,500	1,500	1,500	-10%	0%	0%	0%	↓	↓	↓	↓
	Onion	938	583	563	500	500	61%	67%	88%	88%	↓	↓	↓	↓
	Rice	2,000	2,000	2,000	2,000	2,000	0%	0%	0%	0%	↓	↓	↓	↓
	Sugar	1,000	1,000	1,000	1,000	1,000	0%	0%	0%	0%	↓	↓	↓	↓
	Wheat flour	1,000	1,000	1,000	1,000	1,000	0%	0%	0%	0%	↓	↓	↓	↓
Muthana	Fresh Milk	1,500	1,500	1,500	1,500	1,500	0%	0%	0%	0%	↓	↓	↓	↓
	Lentils	2,000	2,000	2,000	2,000	2,000	0%	0%	0%	0%	↓	↓	↓	↓
	Meat (Beef)	7,500	7,500	7,500	7,500	7,000	0%	0%	0%	7%	↓	↓	↓	↓
	Oil (Vegetable)	1,750	1,750	1,750	1,750	1,500	0%	0%	0%	17%	↓	↓	↓	↓
	Onion	750	500	625	500	750	50%	20%	50%	0%	↓	↓	↓	↓
	Rice	2,000	2,000	2,000	2,000	2,000	0%	0%	0%	0%	↓	↓	↓	↓
	Sugar	1,000	1,000	1,000	1,000	1,000	0%	0%	0%	0%	↓	↓	↓	↓
	Wheat flour	1,250	1,250	1,250	1,250	1,250	0%	0%	0%	0%	↓	↓	↓	↓
Najaf	Fresh Milk	3,000	3,000	3,000	3,000	3,000	0%	0%	0%	0%	↓	↓	↓	↓
	Lentils	1,750	1,750	2,000	2,000	2,000	0%	-13%	-13%	-13%	↓	↓	↓	↓
	Meat (Beef)	15,000	15,000	15,000	15,000	15,000	0%	0%	0%	0%	↓	↓	↓	↓
	Oil (Vegetable)	1,750	1,750	1,750	1,750	1,750	0%	0%	0%	0%	↓	↓	↓	↓
	Onion	750	750	750	750	750	0%	0%	50%	0%	↓	↓	↓	↓

Annex 2: Market Prices by Commodity

Commodity	Market	Current Month	Price Data in Previous Periods				% Change from Stated Period				Direction of change			
			1 Month	3 Month	6 Month	12 Month	1 Month	3 Month	6 Month	12 Month	1 Month	3 Month	6 Month	12 Month
		Current Month	(+/-5%)	(+/-5%)	(+/-10%)	(+/-10%)	(+/-5%)	(+/-5%)	(+/-10%)	(+/-10%)	(+/-5%)	(+/-5%)	(+/-10%)	(+/-10%)
Fresh Milk	National Average	1,971	2,327	2,321	2,325	5,827	-15%	-15%	-15%	-46%	3	3	3	3
	Anbar	1,901	1,688	1,870	1,958	1,975	13%	2%	3%	-4%	3	3	3	3
	Babylon	2,000	2,000	2,000	2,000	2,000	0%	0%	0%	0%	3	3	3	3
	Baghdad	1,719	1,578	1,672	1,703	13,022	15%	3%	1%	-87%	3	3	3	3
	Bashra	1,578	2,000	2,000	2,000	2,000	-25%	-25%	-48%	-75%	3	3	3	3
	Diyala	1,613	1,833	1,589	1,578	1,623	-12%	1%	2%	-89%	3	3	3	3
	Dohuk	1,500	1,813	1,625	1,500	1,750	-17%	-8%	0%	-14%	3	3	3	3
	Erbil	2,000	2,000	2,000	2,000	2,000	0%	0%	0%	0%	3	3	3	3
	Kerbala	2,000	2,000	2,000	2,000	2,000	0%	0%	0%	0%	3	3	3	3
	Kirkuk	1,588	3,357	3,213	1,800	13,688	19%	24%	122%	-71%	3	3	3	3
	Missan	1,500	2,000	2,000	2,000	2,438	-25%	-25%	-48%	-38%	3	3	3	3
	Muthana	1,500	1,500	1,500	1,500	1,500	0%	0%	0%	0%	3	3	3	3
	Najaf	3,000	3,000	3,000	3,000	3,000	0%	0%	0%	0%	3	3	3	3
	Ninewa	1,840	1,813	1,781	1,621	13,179	2%	3%	14%	-86%	3	3	3	3
	Qadisiya	2,000	2,000	2,000	2,000	2,000	0%	0%	0%	0%	3	3	3	3
	Salah Al-Din	1,545	1,625	1,523	1,641	12,967	-5%	1%	7%	-88%	3	3	3	3
	Sulaimaniyah	1,963	1,750	2,000	2,000	2,438	12%	-2%	-2%	-19%	3	3	3	3
	Thi Qar	2,000	2,000	2,000	2,000	2,000	0%	0%	0%	0%	3	3	3	3
	Wassit	2,000	2,000	2,000	2,000	2,000	0%	0%	0%	0%	3	3	3	3

Commodity	Market	Current Month	Price Data in Previous Periods				% Change from Stated Period				Direction of change			
		Current Month	1 Month	3 Month	6 Month	12 Month	1 Month	3 Month	6 Month	12 Month	(+/-5%)	(+/-5%)	(+/-10%)	(+/-10%)
Lentils	National Average	1,955	2,026	1,978	2,287	2,003	-4%	-1%	-15%	-2%	3	3	3	3
	Anbar	1,741	1,688	1,719	1,781	2,100	3%	1%	-2%	-17%	3	3	3	3
	Babylon	2,000	2,000	2,000	2,000	2,000	25%	25%	25%	25%	3	3	3	3
	Baghdad	1,906	2,042	1,875	2,114	750	-7%	2%	-10%	154%	3	3	3	3
	Bashra	2,333	1,647	1,750	3,000	2,000	-15%	33%	-22%	17%	3	3	3	3
	Diyala	1,713	1,667	1,806	1,917	2,000	3%	-5%	-11%	197%	3	3	3	3
	Dohuk	2,250	2,300	1,875	2,438	2,000	-2%	20%	-8%	13%	3	3	3	3
	Erbil	1,500	1,500	2,000	2,350	2,350	0%	0%	0%	0%	3	3	3	3
	Kerbala	2,000	2,000	2,000	2,000	2,350	0%	0%	0%	-11%	3	3	3	3
	Kirkuk	1,955	2,026	2,109	1,903	1,903	13%	-31%	-24%	-23%	3	3	3	3
	Missan	2,333	2,026	1,750	3,000	2,500	-15%	33%	-22%	-7%	3	3	3	3
	Muthana	2,000	1,938	2,000	2,000	1,813	3%	0%	0%	10%	3	3	3	3
	Najaf	1,750	1,938	2,000	2,125	1,000	-13%	-13%	-18%	-18%	3	3	3	3
	Ninewa	1,615	1,688	1,594	1,922	2,023	-4%	-1%	-16%	-20%	3	3	3	3
	Qadisiya	2,500	2,250	2,000	2,250	1,1%	25%	25%	11%	3	3	3	3	
	Salah Al-Din	1,545	1,792	1,883	1,351	1,958	-14%	-18%	-54%	-21%	3	3	3	3
	Sulaimaniyah	1,675	1,620	2,750	2,750	2,500	3%	-39%	-39%	-33%	3	3	3	3
	Thi Qar	2,563	2,500	2,500	2,422	2,422	0%	0%	0%	0%	3	3	3	3
	Wassit	2,688	2,500	2,500	2,438	2,438	0%	0%	0%	0%	3	3	3	3

Commodity	Market	Current Month	Price Data in Previous Periods				% Change from Stated Period				Direction of change			
			1 Month	3 Month	6 Month	12 Month	1 Month	3 Month	6 Month	12 Month	1 Month	3 Month	6 Month	12 Month
		Current Month	(+/-5%)	(+/-5%)	(+/-10%)	(+/-10%)	(+/-5%)	(+/-5%)	(+/-10%)	(+/-10%)	(+/-5%)	(+/-5%)	(+/-10%)	(+/-10%)
Meat (Beef)	National Average	13,057	13,127	12,505	9,529	14,330	-1%	4%	37%	-9%	3	3	3	3
	Anbar	11,306	11,000	10,083	9,958	13,900	3%	12%	14%	-19%	3	3	3	3
	Babylon	13,000	13,000	13,000	13,000	13,000	0%	0%	0%	0%	3	3	3	3
	Baghdad	13,156	14,167	13,031	1,489	17,214	-7%	1%	784%	-24%	3	3	3	3
	Bashra	13,000	13,000	13,000	13,000	14,000	0%	0%	0%	-7%	3	3	3	3
	Diyala	12,850	14,667	13,032	1,938	16,979	-12%	-1%	563%	-43%	3	3	3	3
	Dohuk	13,750	11,500	15,000	14,500	15,000	20%	-8%	-5%	-8%	3	3	3	3
	Erbil	15,000	15,000	15,000	15,000	15,000	0%	0%	0%	0%	3	3	3	3
	Kerbala	16,000	16,000	16,000	16,000	16,000	0%	0%	0%	0%	3	3	3	3
	Kirkuk	13,000	14,857	13,253	1,694	16,647	-13%	-3%	667%	-22%	3	3	3	3
	Missan	13,000	13,000	13,000	14,000	16,625	0%	0%	-7%	-22%	3	3	3	3
	Muthana	15,000	15,000	15,000	7,500	13,000	0%	0%	0%	-42%	3	3	3	3
	Najaf	15,000	15,000	15,000	15,000	15,000	0%	0%	0%	0%	3	3	3	3
	Ninewa	12,500	12,188	11,738	1,358	15,152	3%	6%	820%	-18%	3	3	3	3
	Qadisiya	14,000	13,500	13,000	13,000	13,000	4%	8%	8%	8%	3	3	3	3
	Salah Al-Din	12,045	12,667	12,781	1,351	1,750	-5%	-6%	834%	922%	3	3	3	3
	Sulaimaniyah	15,750	15,250	15,000	14,750	16,625	3%	5%	7%	-5%	3	3	3	3
	Thi Qar	12,000	12,000	12,000	6,050	12,000	0%	0%	0%	0%	3	3	3	3
	Wassit	12,000	12,000	12,000	12,000	12,000	0%	0%	0%	0%	3	3	3	3

Commodity	Market	Current Month	Price Data in Previous Periods				% Change from Stated Period				Direction of change			
			1 Month	3 Month	6 Month	12 Month	1 Month	3 Month	6 Month	12 Month	1 Month	3 Month	6 Month	12 Month
		Current Month	(+/-5%)	(+/-5%)	(+/-10%)	(+/-10%)	(+/-5%)	(+/-5%)	(+/-10%)	(+/-10%)	(+/-5%)	(+/-5%)	(+/-10%)	(+/-10%)
Oil (Vegetable)	National Average	2,029	1,859	1,872	1,558	2,225	9%	8%	30%	-9%	3	3	3	3
	Anbar	1,839	1,575	1,918	1,944	2,422	5%	-5%	-6%	-24%	3	3	3	3
	Babylon	2,250	2,250	2,250	2,250	2,125	0%	0%	0%	6%	3	3	3	3
	Baghdad	1,853	1,708	1,805	1,805	1,805	8%	3%	88%	8%	3	3	3	3
	Bashra	1,667	1,750	1,750	1,500	2,000	33%	11%	11%	-17%	3	3	3	3
	Diyala	1,763	1,833	1,887	1,021	1,021	-4%	-7%	73%	73%	3	3	3	3
	Dohuk	1,500	1,563	1,625	1,500	1,750	-4%	-8%	0%	-14%	3	3	3	3
	Erbil	1,500	1,500	1,500	1,500	1,500	0%	0%	0%	0%	3	3	3	3
	Kerbala	1,750	1,750	1,750	1,750	2,000	0%	0%	0%	-30%	3	3	3	3
	Kirkuk	1,575	1,544	1,544	1,017	1,017	2%	43%	448%	448%	3	3	3	3
	Missan	1,667	1,500	1,500	1,500	1,500	33%	11%	11%	-48%	3	3	3	3
	Muthana	1,750	1,750	1,750	1,750	1,750	0%	0%	0%	17%	3	3	3	3
	Najaf	1,750	1,750	1,750	1,750	1,750	0%	0%	0%	0%	3	3	3	3
	Ninewa	1,510	1,500	1,569	1,042	1,042	1%	-4%	45%	45%	3	3	3	3
	Qadisiya	2,250	2,250	2,250	2,250	2,500	0%	0%	0%	-10%	3	3	3	3
	Salah Al-Din	1,757	1,650	1,859	1,859	1,859	6%	-6%	6%	6%	3	3	3	3
	Sulaimaniyah	1,550	1,550	1,875	1,700	2,100	24%	-17%	-9%	-51%	3	3	3	3
	Thi Qar	1,500	1,500	1,500	1,500	1,500	0%	0%	0%	0%	3	3	3	3
	Wassit	1,500	1,500	1,500	1,500	2,000	0%	0%	0%	0%	3	3	3	3

Commodity	Market	Current Month	Price Data in Previous Periods				% Change from Stated Period				Direction of change			
		Current Month	1 Month	3 Month	6 Month	12 Month	1 Month	3 Month	6 Month	12 Month	1 Month	3 Month	6 Month	12 Month
			(+/-5%)	(+/-5%)	(+/-5%)	(+/-10%)	(+/-10%)	(+/-5%)	(+/-5%)	(+/-10%)	(+/-10%)			
Onion	National Average	884	888	747	815	951	0%	18%	8%	-7%	3	3	3	3
	Anbar	690	625	667	719	800	10%	3%	-4%	-20%	3	3	3	3
	Babylon	1,000	1,000	875	750	813	0%	14%	33%	23%	3	3	3	3
	Baghdad	734	875	828	828	828	-16%	-11%	-11%	-11%	3	3	3	3
	Bashra	583	750	500	500	500	-22%	17%	-42%	17%	3	3	3	3
	Diyala	619	667	663	663	663	-7%	-7%	-7%	-7%	3	3	3	3
	Dohuk	750	750	750	750	750	0%	0%	0%	0%	3	3	3	3
	Erbil	1,000	1,000	1,000	1,000	1,250	0%	0%	0%	0%	3	3	3	3
	Kerbala	1,000	1,000	1,000	1,200	875	0%	0%	0%	14%	3	3	3	3
	Kirkuk	1,190	1,250	1,160	1,160	1,160	19%	149%	19%	14%	3	3	3	3
	Misan	583	750	500	500	1,000	-22%	17%	-42%	-63%	3	3	3	3
	Muthana	750	750	750	750	750	-33%	-33%	-33%	-33%	3	3	3	3
	Najaf	750	750	563	563	750	0%	33%	0%	0%	3	3	3	3
	Nasiriyah	713	425	694	694	694	0%	1%	3%	0%	3	3	3	3
	Qadisiyah	813	1,000	1,000	1,000	875	-19%	-19%	8%	-7%	3	3	3	3
Salah Al Din	586	586	598	598	598	8%	-2%	-2%	-2%	3	3	3	3	
Sulaimaniyah	550	738	1,000	750	1,000	-25%	-45%	-27%	-65%	3	3	3	3	
Thi Qar	625	625	625	625	875	0%	0%	0%	0%	3	3	3	3	
Wasit	688	375	875	875	938	0%	0%	0%	0%	3	3	3	3	