



### Highlights:

o Bread prices are higher by 239 percent for public and 120 percent for commercial bread in Ar-Raqqa city market compared to average prices in accessible markets across Syria.

o As the siege in Deir-ez-Zor comes to an end, food supply to the besieged area is expected to increase, pushing down food prices across multiple food commodities.

o Average retail prices are higher by 19.6 percent for rice in hard-to-reach markets and 144 percent for bulgur in besieged Deir-ez-Zor markets compared to average prices of these commodities in accessible markets across Syria.

o Since April 2017 there has been a continued gradual increase in the ToT sheep price and casual labours daily wage against the price of wheat flour.

For further information please contact :

Jan Michiels : [Jan.Michiels@wfp.org](mailto:Jan.Michiels@wfp.org)

Dima Alhumsj : [Dima.Alhumsj@wfp.org](mailto:Dima.Alhumsj@wfp.org)

### A: Standard Food Basket

In August 2017, the national average cost of a standard food basket<sup>1</sup> (group of essential food commodities) was SYP 32,226. Representing a decrease of 1.7 percent compared to last month, 6.8 percent compared to six months ago and 0.3 percent compared to August 2016.

Market price monitoring data for this month indicated that the highest average cost of food basket was in Deir-ez-Zor governorate at SYP 52,813 while the lowest was recorded in Al-Hasakeh at SYP 25,513.

A slight decrease in food prices was observed in most monitored markets during August. The decrease was mainly captured for pulses, oil and sugar prices with a significant decrease in prices in Deir-ez-zor compared to last month (-8 percent on the average price of the food basket). An exception was observed in Rural Damascus and Tartous for the price of lentils which increased by 2 percent and for rice in Quineitra which increased by 2.6 percent.

Nevertheless, food access remains a serious concern for the trapped populations in Ar-Raqqa city and rural Deir-ez-Zor where the average food basket price even though gradually decreasing remains high compared to the national average (Ar Raqqa 28 percent above average and Deir-ez-Zor 63 percent above average).

Chart 1: Min. vs. Max. National Average Cost of Food Basket (in SYP)

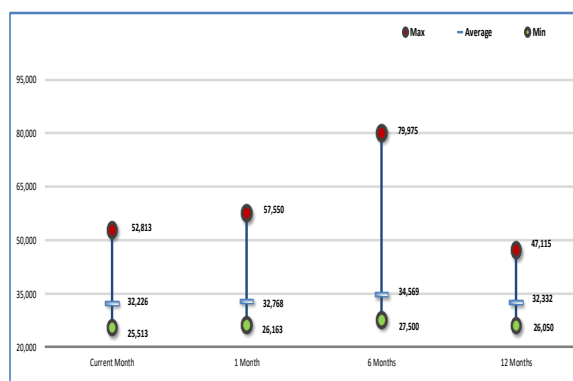
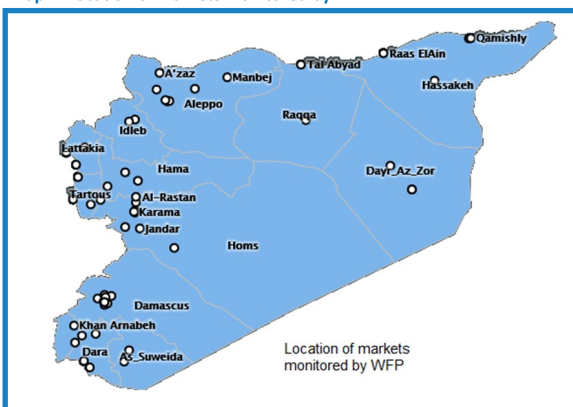


Figure 1: Food Basket Cost and Changes (in SYP)

Governorate	Price August 2017	Price 1 month change	Price 6 months changes	Price 12 months changes
Aleppo	SYP 28,940	-1%	-5%	0%
Damascus	SYP 29,480	0%	-4%	1%
Dar'a	SYP 27,605	1%	0%	6%
Deir-ez-Zor	SYP 52,813	-8%	-34%	12%
Hama	SYP 31,820	0%	-2%	6%
Al-Hasakeh	SYP 25,513	-2%	-15%	-31%
Homs	SYP 28,815	-1%	-6%	10%
Lattakia	SYP 29,630	1%	-4%	1%
Ar-Raqqa	SYP 40,990	-1%	21%	-2%
Rural Damascus	SYP 28,975	0%	-5%	-24%
As-Sweida	SYP 31,780	-3%	-3%	5%
Tartous	SYP 31,070	0%	2%	4%
Quineitra	SYP 28,040	-1%	-3%	0%
Idlib	SYP 35,715	0%	1%	18%
Average	SYP 32,225	-2%	-7%	0%

Map 1: Location of markets monitored by WFP



1.The cost of a standard basket of dry goods providing 1,930 kcal a day for a family of five during a month. The basket includes 37 kg of bread, 19 kg rice, 19 kg lentils, 5 kg of sugar, and 7 kg of vegetable oil.

## B: Retail Prices

### 1- Wheat Flour, Rice and Bulgur:

The improved security situation in some besieged and hard-to-reach areas continues to positively impact supply routes leading to improved food availability and prices in many markets across the country.

In August, one kg of wheat flour on average sold at SYP 259, rice at SYP 525 and bulgur at SYP 302 across markets in Syria. Compared to July, prices of wheat flour and rice remained relatively unchanged while bulgur went up by 1.7 percent. National retail prices decreased by three percent for wheat flour, 1.9 percent for rice and increased by 1.7 percent for bulgur when compared to six months ago (February 2017). However, compared to August 2016, prices have increased by 4.7 percent for wheat flour, 3.7 percent for rice and 7.2 percent for bulgur.

Food price monitoring data indicates that Deir-ez-Zor markets continue to record highest average prices for wheat flour SYP 400/kg, rice SYP 750/kg and bulgur SYP 700/kg. On the other hand, the lowest average prices were reported in Quneitra for wheat flour SYP 205/kg, As-Sweida for rice SYP 325/kg while Dar'a recorded the lowest average price for bulgur at SYP 213/kg.

In August, the average retail price of 1kg of rice was 19.6 percent higher in hard-to-reach markets while instead 17 percent lower in besieged Deir-ez-Zor markets when compared to the accessible markets average price. Moreover, an increase of 2.4 percent and 144 percent was observed in bulgur prices in hard-to-reach and besieged Deir-ez-Zor markets respectively, compared to the accessible markets average for the month.

The food security situation continues to be challenging in Ar-Raqqa city and rural Deir-ez-Zor where market functionality has been negatively impacted by heavy clashes and continued violence.

### 2- Bread:

In August 2017, the average nominal retail prices for public (subsidized) bread and commercial (shop) bread were SYP 80/bundle and SYP 133/bundle, respectively. Market price monitoring data indicates relatively stable prices for both public and commercial bread compared to last month, with less than one percent changes.

Between February and August 2017, the average retail prices of public bread went up by 1.3 percent while it declined by three percent for commercial bread. Year-on-year, public bread retail price decreased by eight percent while shop bread remained unchanged.

Across all prime monitored markets, Idleb continued to record the highest price for public and commercial bread during this month at SYP 275/bundle and SYP 300/bundle, respectively. Tartous market recorded the lowest price for commercial bread at SYP 63/bundle.

In Ar-Raqqa city market, the average price of bread was 239 percent higher for public and 120 percent higher for commercial compared to average prices in accessible markets. In hard-to-reach markets, it was higher by 107 percent for public and 57 percent for commercial compared to the Syrian accessible market average.

Chart 2: Wheat Flour Retail Price in SYP

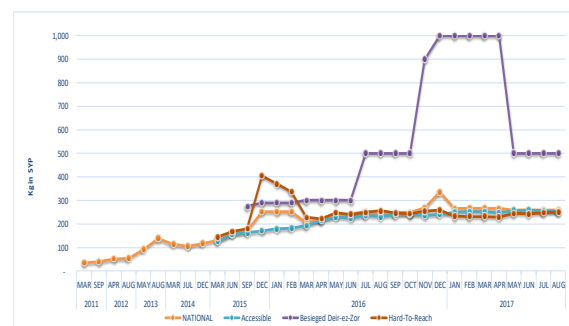


Chart 3: Retail Prices of Rice in SYP

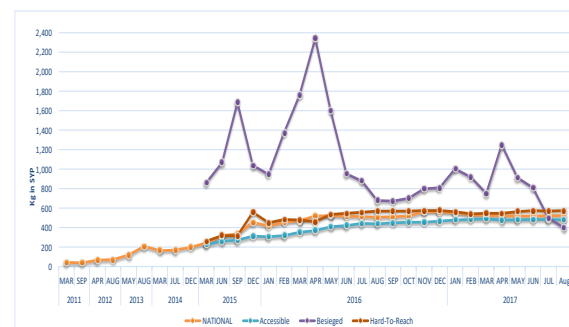


Chart 4: Retail Prices of Bulgur in SYP

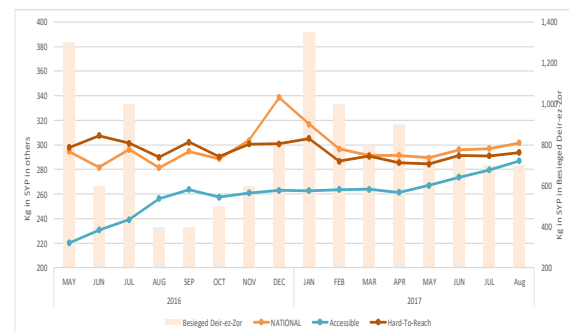


Chart 5: Retail Prices of Public Bread in ACC, HTR and BSG Markets in SYP

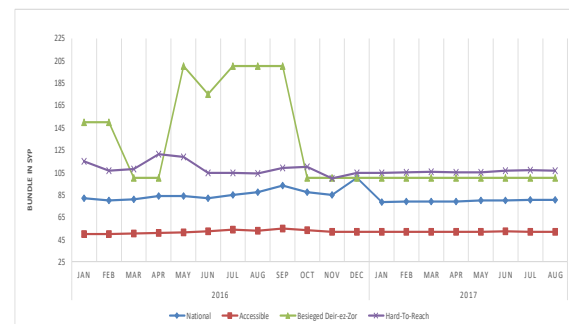
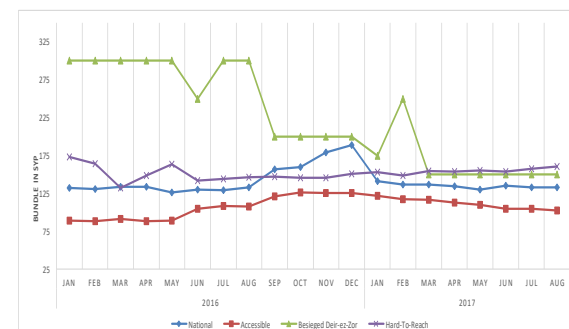


Chart 6: Retail Prices of Shop Bread in ACC, HTR and BSG Markets in SYP



Source: WFP Field Offices

### 3– Diesel and cylinder of butane gas

In August 2017, the average price of diesel was SYP 340/L and SYP 4,348 for a cylinder of butane gas. Between February and August 2017, the average retail prices of diesel went up by 2.4 percent while a cylinder of butane gas decreased by 12 percent. Compared to August 2016, prices went down by 9 percent for diesel and 18 percent for butane gas.

During August, the highest average price for diesel and butane gas was observed in Deir-ez-Zor markets at SYP 1,200/L and SYP 9,425, respectively. The lowest average cost for diesel was reported from Al-Hasakeh, SYP 107/L.

The price of diesel was 532 percent higher in besieged markets of Deir-ez-Zor compared to the national average level. Moreover, the average price of butane gas was 16 percent higher in hard to reach markets and 176 percent higher in the besieged markets of Deir-ez-Zor compared to the national average level. Higher fuel prices add a higher cost on transportation and will exert pressure further inflating food prices in besieged and hard to reach markets.

#### C. Wholesale Prices of Main Cereal in Damascus Market

In August, the average nominal wholesale price of cereal was SYP 6,500/25 kg for wheat grain, SYP 5,650/25 kg for bulgur and SYP 11,450/25 kg for rice.

Overall wholesale cereal prices (wheat, bulgur and rice) decreased by 0.6 percent in August compared to July 2017 .

Between February and August 2017, wholesale prices decreased by 11 percent for wheat, 15 percent for bulgur and 4.6 percent for rice.

Year-on-year, the wholesale prices declined by 21 percent for wheat, 22 percent for bulgur and 16 percent for rice.

#### D. Food Supply to Markets

During August, market functionality in Ar-Raqqa city and rural Deir-ez-Zor was severely disrupted by active fighting between controlling parties leading to higher prices and limited availability for many food commodities. However, the situation in Deir-ez-Zor is expected to improve in the coming weeks as the siege seems to progressively come to an end.

In eastern Ghouta, the situation was critical in the first week of August due to escalated fighting. However, a slight improvement was reported after successful access with humanitarian aid to the besieged community.

The gradually improved security situation across the country is positively impacting supply routes' functionality in many governorates including Al-Hasakeh, Aleppo and Homs. Moreover, better access to own production has increased availability of fresh food and reduced demand from markets relaxing food prices in multiple markets across the country.

Chart 7: Retail Prices of Diesel in SYP

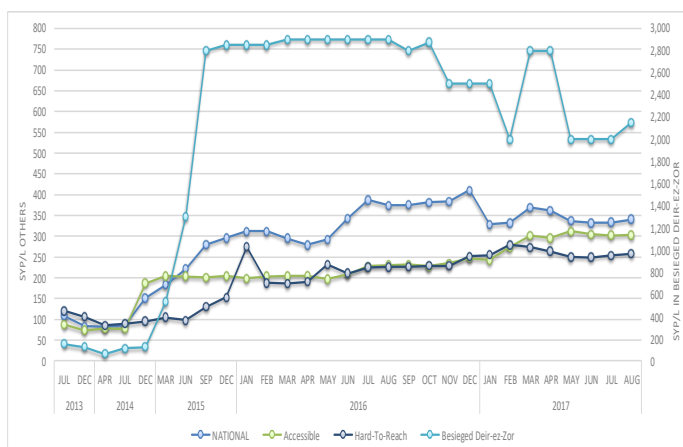


Chart 8: Retail Prices of Butane Cylinder in SYP

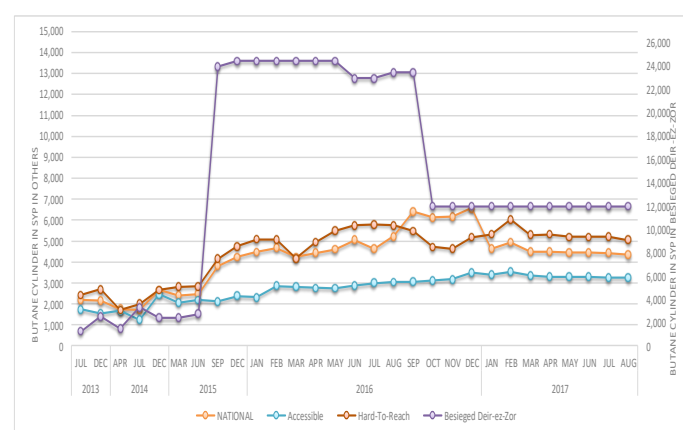
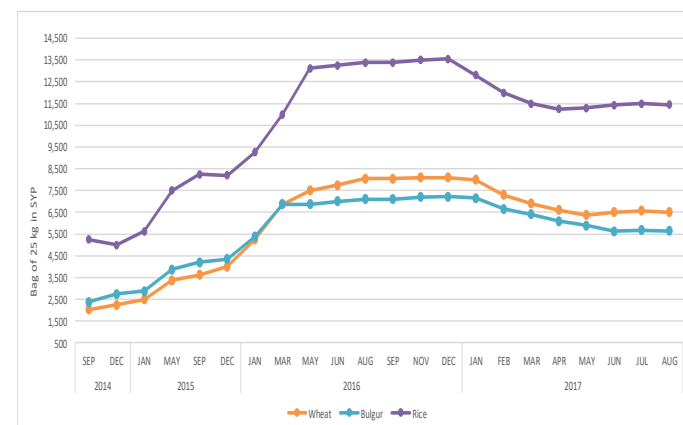


Chart 9: Wholesale Prices for Wheat, Bulgur and Rice in SYP



Source: WFP Field Offices

## E. Terms of Trade (TOT):<sup>2</sup>

### TOT between wage labour and wheat flour

The national average daily wage rate during August was SYP 1,731. Purchasing power (measured through terms of trade) of casual labourers remains weak across all monitored markets in the country.

In August 2017 the national average wage for a casual labour's full days work could only buy 6.7 kg of wheat flour/day. Representing an increase of two percent compared to July 2017; 24 percent compared to February 2017; and 27 percent compared to August 2016.

Key sources identified an increased demand on male skilled labourers in urban markets due to limited availability. However, despite the slight increase in daily wage, the rate for the unskilled labourers remains low across the country especially in active-conflict areas where job opportunities are very limited.

### TOT between sheep and wheat flour

During August, the national average price of a two-year old male sheep was SYP 117,197/head. This shows an increase of 2.7 percent compared to last month, a 27 percent increase compared to February 2017 and a 25.4 percent increase compared to August 2016.

The national average TOT between a sheep and wheat flour was 453kg/sheep. Which is 2.7 percent higher than last month; 29 percent higher compared to February 2017; and 22 percent higher compared to August 2016.

## F. International Market Prices

The FAO Food Price Index averaged 176.6 points in August 2017, down by 1.3 percent compared to last month's average but up by six percent compared to August 2016.

The Cereal Price Index averaged 153.4 points in August, down by 5.4 percent compared to July 2017 influenced by projected record high levels in world wheat harvests. The index however remained 6.8 percent higher than August 2016.

In August 2017, wholesale wheat prices on the international market were at USD 171/MT. In comparison nominal wheat prices on local markets across Syria averaged USD 500/MT (192 percent more expensive).

Chart 10: Terms of Trade (TOT) between wage labour and wheat flour

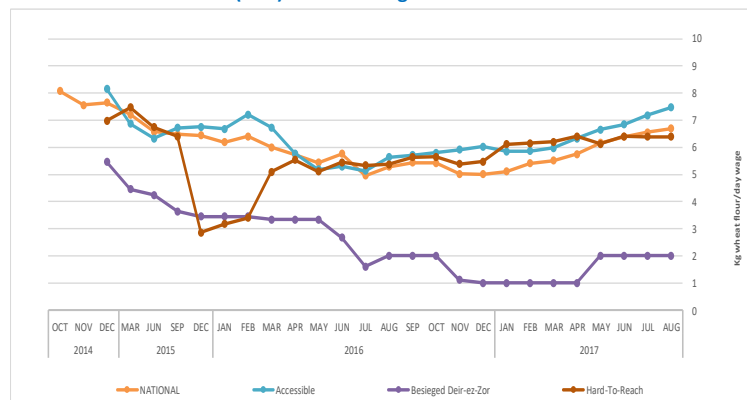
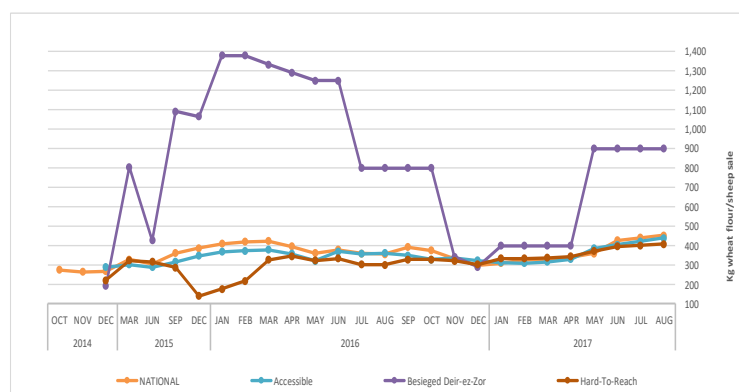


Chart 11: Terms of Trade (TOT) between sheep and wheat flour



Source: WFP Field Offices

Chart 12: Trends in global wheat prices

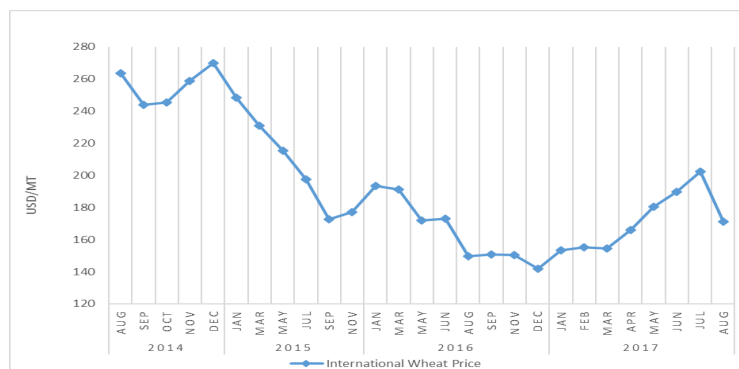
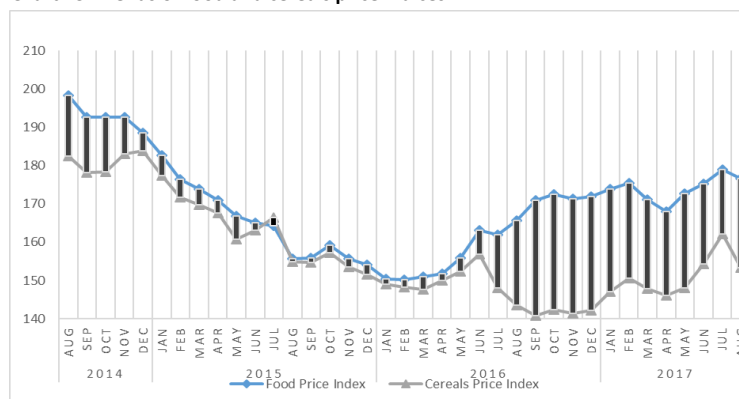


Chart 13: Trends of food and cereals price indices



Data Source: <http://www.fao.org/worldfoodsituation/wfs-home/foodpricesindex/en/> and [https://ycharts.com/indicators/us\\_hard\\_red\\_winter\\_wheat\\_export\\_price\\_gulf\\_ports](https://ycharts.com/indicators/us_hard_red_winter_wheat_export_price_gulf_ports)

2. The TOT are proxy indicators of the purchasing power of households that rely on livestock and/or casual labour as their main source of income for the purchase of cereals from local markets. TOT are important components of food security analysis. Changes in the terms of trade between wages/livestock and staple food commodities are indicative of the trends in purchasing power and the impact on the food security situation of households dependent on food purchases through income from daily wage labour and/or the sale of livestock.



Commodity	Governorate	Current Price	Price change (%)	Price change (%)	Average Change	Average Change	Commodity	Governorate	Current Price	Price change (%)	Price change (%)	Average Change	Average Change
			1M	6 M	1M	6 M				1M	6 M		
Bread Public (1.5 kg)	Aleppo	110	-	5.0	↔	↑	Date (kg)	Aleppo	1,050	2.4	18.9	↑	↑
	Damas cus	50	-	-	↔	↔		Damas cus	1,100	-	11.1	↔	↑
	Dar'a	50	-	-	↔	↔		Dar'a	1,150	6.9	21.1	↑	↑
	Deir-ez-Zor	100	-	-	↔	↔		Deir-ez-Zor	2,550	-	16.7	↔	↑
	Idleb	275	-	10.0	↔	↑		Idleb	725	45.0	61.1	↑	↑
	Hama	50	-	-13.7	↔	↓		Hama	1,333	14.4	41.6	↑	↑
	Al- Has akeh	50	-	-	↔	↔		Al- Has akeh	1,000	-	45.8	↔	↑
	Homs	50	-	-	↔	↔		Homs	1,367	15.9	61.7	↑	↑
	Lattak ia	50	-	-	↔	↔		Lattak ia	1,275	8.7	57.8	↑	↑
	Quneitra	75	-2.4	-6.5	↓	↓		Quneitra	1,150	4.0	17.2	↑	↑
	Ar-Raqqa	113	-	8.3	↔	↑		Ar-Raqqa	1,100	-	120.0	↔	↑
	Rural Damas cus	50	-	-	↔	↔		Rural Damas cus	1,350	-1.9	0.3	↓	↑
	As-Sweida	50	-	-	↔	↔		As-Sweida	1,350	7.1	35.0	↑	↑
	Tartous	50	-	-	↔	↔		Tartous	1,300	2.2	68.8	↑	↑
Bread Shops (1.5 kg)	Aleppo	200	3.1	4.3	↑	↑	Diesel (L)	Aleppo	330	2.1	-13.2	↑	↓
	Damas cus	103	-2.3	-24.1	↓	↓		Damas cus	300	-	2.6	↔	↑
	Dar'a	150	-	-	↔	↔		Dar'a	293	1.1	-14.0	↑	↓
	Deir-ez-Zor	213	5.0	67.5	↑	↑		Deir-ez-Zor	1,200	6.3	25.2	↑	↑
	Idleb	300	-	4.5	↔	↑		Idleb	278	2.8	-28.8	↑	↓
	Hama	73	7.3	-24.4	↑	↓		Hama	375	-	40.9	↔	↑
	Al- Has akeh	138	-	-	↔	↔		Al- Has akeh	107	8.5	20.0	↑	↑
	Homs	85	-8.1	-12.6	↓	↓		Homs	220	-	9.9	↔	↑
	Lattak ia	75	-	-	↔	↔		Lattak ia	300	-	22.5	↔	↑
	Quneitra	152	-2.4	2.9	↓	↑		Quneitra	273	3.8	-3.3	↑	↓
	Ar-Raqqa	143	-	4.9	↔	↑		Ar-Raqqa	185	-	27.8	↔	↑
	Rural Damas cus	88	-	-	↔	↔		Rural Damas cus	325	-3.8	3.0	↓	↑
	As-Sweida	75	-	-	↔	↔		As-Sweida	330	-5.7	-2.0	↓	↓
	Tartous	63	-	-	↔	↔		Tartous	300	4.5	20.6	↑	↑
Bulgur (kg)	Aleppo	237	3.9	5.7	↑	↑	Fish (Sardine, canned)	Aleppo	239	-2.5	-5.4	↓	↓
	Damas cus	304	5.7	4.0	↑	↑		Damas cus	350	-	-	↔	↔
	Dar'a	213	12.5	12.5	↑	↑		Dar'a	244	-2.4	-2.4	↓	↓
	Deir-ez-Zor	700	-	12.8	↔	↑		Deir-ez-Zor	700	-0.4	3.6	↓	↑
	Idleb	250	4.3	11.1	↑	↑		Idleb	225	-	-10.0	↔	↓
	Hama	283	-1.4	-4.3	↓	↓		Hama	275	-	11.5	↔	↑
	Al- Has akeh	235	2.5	-24.5	↑	↓		Al- Has akeh	250	-	-18.8	↔	↓
	Homs	297	8.3	20.9	↑	↑		Homs	247	-	-1.9	↔	↓
	Lattak ia	300	-	9.2	↔	↑		Lattak ia	269	2.2	6.9	↑	↑
	Quneitra	245	-	10.6	↔	↑		Quneitra	228	-3.3	-7.0	↓	↓
	Ar-Raqqa	313	0.6	6.5	↑	↑		Ar-Raqqa	338	-	10.7	↔	↑
	Rural Damas cus	305	1.7	1.7	↑	↑		Rural Damas cus	275	-	-	↔	↔
	As-Sweida	300	-	-	↔	↔		As-Sweida	275	-	-	↔	↔
	Tartous	319	-4.9	5.3	↓	↑		Tartous	338	0.7	4.3	↑	↑
Butane Cylinder (10 kg)	Aleppo	3,363	-1.8	-22.4	↓	↓	Fish (tuna, canned)	Aleppo	365	2.1	5.9	↑	↑
	Damas cus	2,700	-	-10.0	↔	↓		Damas cus	463	-	-	↔	↔
	Dar'a	5,750	2.4	-7.2	↑	↓		Dar'a	425	6.3	6.3	↑	↑
	Deir-ez-Zor	9,425	2.7	7.1	↑	↑		Deir-ez-Zor	825	2.0	-20.8	↑	↓
	Idleb	7,500	-11.8	-34.2	↓	↓		Idleb	325	-	8.3	↔	↑
	Hama	3,333	-	-15.7	↔	↓		Hama	600	-	30.5	↔	↑
	Al- Has akeh	2,500	-6.1	-2.5	↓	↓		Al- Has akeh	425	-2.8	-2.8	↓	↓
	Homs	2,633	-	-9.8	↔	↓		Homs	463	1.3	1.3	↑	↑
	Lattak ia	3,000	-	17.1	↔	↑		Lattak ia	357	1.9	1.9	↑	↑
	Quneitra	5,850	-2.6	-5.0	↓	↓		Quneitra	443	-1.2	31.0	↓	↑
	Ar-Raqqa	8,500	4.5	15.2	↑	↑		Ar-Raqqa	475	-1.6	11.1	↓	↑
	Rural Damas cus	2,775	-0.9	-19.4	↓	↓		Rural Damas cus	450	-	6.3	↔	↑
	As-Sweida	2,900	-	-11.4	↔	↓		As-Sweida	438	3.1	3.1	↑	↑
	Tartous	3,000	-	19.4	↔	↑		Tartous	375	-2.8	-0.4	↓	↓
Cheese (kg)	Aleppo	1,556	5.5	2.5	↑	↑	Iodised salt (kg)	Aleppo	189	5.6	60.0	↑	↑
	Damas cus	1,288	-1.0	-16.8	↓	↓		Damas cus	125	-	-	↔	↔
	Dar'a	1,075	7.6	-8.3	↑	↓		Dar'a	150	-	-10.5	↔	↓
	Deir-ez-Zor	2,500	-	-	↔	↔		Deir-ez-Zor	563	12.5	12.5	↑	↑
	Idleb	1,000	-	11.1	↔	↑		Idleb	100	-	-	↔	↔
	Hama	1,483	-	-6.3	↔	↓		Hama	165	5.2	52.0	↑	↑
	Al- Has akeh	1,200	-	-3.8	↔	↓		Al- Has akeh	100	-	16.7	↔	↑
	Homs	1,267	1.3	-1.4	↑	↓		Homs	175	12.2	49.7	↑	↑
	Lattak ia	1,400	-	5.7	↔	↑		Lattak ia	50	-	-	↔	↔
	Quneitra	1,000	0.8	-11.0	↑	↓		Quneitra	105	-	-	↔	↔
	Ar-Raqqa	1,450	-3.6	4.9	↓	↑		Ar-Raqqa	300	-	205.6	↔	↑
	Rural Damas cus	1,350	1.9	8.0	↑	↑		Rural Damas cus	150	-	10.0	↔	↑
	As-Sweida	1,400	-6.7	-6.7	↓	↓		As-Sweida	150	-	-	↔	↔
	Tartous	1,438	-1.9	11.4	↓	↑		Tartous	63	-	-8.3	↔	↓
Chickpeas (kg)	Aleppo	469	-2.7	19.4	↓	↑	Lentils (kg)	Aleppo	455	-2.0	-10.9	↓	↓
	Damas cus	700	-	36.7	↔	↑		Damas cus	658	-0.7	-6.1	↓	↓
	Dar'a	388	2.8	9.4	↑	↑		Dar'a	495	-1.3	0.9	↓	↑
	Deir-ez-Zor	1,050	-	5.0	↔	↑		Deir-ez-Zor	638	-4.2	-34.3	↓	↓
	Idleb	250	-8.3	-12.9	↓	↓		Idleb	500	-	-	↔	↔
	Hama	642	2.7	18.0	↑	↑		Hama	642	-	2.8	↔	↑
	Al- Has akeh	600	-3.8	-2.0	↓	↓		Al- Has akeh	425	-5.6	-21.7	↓	↓
	Homs	583	4.3	10.8	↑	↑		Homs	557	-1.9	-9.2	↓	↓
	Lattak ia	750	-3.8	20.5	↓	↑		Lattak ia	618	-1.0	-6.8	↓	↓
	Quneitra	450	-7.5	-11.9	↓	↓		Quneitra	450	-3.3	-13.2	↓	↓
	Ar-Raqqa	600	-	-3.5	↔	↓		Ar-Raqqa	725	-2.6	20.8	↓	↑
	Rural Damas cus	775	-4.6	29.7	↓	↑		Rural Damas cus	588	2.4	-5.4	↑	↓
	As-Sweida	750	-6.3	5.3	↓	↑		As-Sweida	863	-4.2	-4.2	↓	↓
	Tartous	800	12.2	50.8	↑	↑		Tartous	613	2.1	1.0	↑	↑
Key:	↑	Prices increase above nominal price fluctuation											
	↔	Nominal Price Fluctuation											
	↓	Price decrease below nominal price fluctuation											

Commodity	Governorate	Current Price	Price change (%)	Price change (%)	Average Change	Average Change	Commodity	Governorate	Current Price	Price change (%)	Price change (%)	Average Change	Average Change
			1M	6 M	1M	6 M				1M	6 M	1M	6 M
Meat (beef, kg)	Aleppo	3,238	3.8	-0.4	↑	↓	Tea (kg)	Aleppo	3,700	0.1	8.5	↑	↑
	Damas cus	4,250	-	26.8	↔	↑		Damas cus	3,400	-	0.8	↔	↑
	Dar'a	4,000	12.5	19.6	↑	↑		Dar'a	4,075	-	12.5	↔	↑
	Deir-ez-Zor	8,100	-10.0	52.5	↓	↑		Deir-ez-Zor	10,500	-0.4	13.3	↓	↑
	Idleb	2,700	-	-3.6	↔	↓		Idleb	3,675	8.1	5.0	↑	↑
	Hama	3,933	-	5.4	↔	↑		Hama	3,767	-	-1.6	↔	↓
	Al- Has akeh	3,450	-0.1	31.3	↓	↑		Al- Has akeh	3,550	-	0.0	↔	↑
	Homs	4,500	4.2	21.9	↑	↑		Homs	3,767	1.0	15.3	↑	↑
	Lattak ia	4,125	-1.7	21.3	↓	↑		Lattak ia	3,500	1.5	24.7	↑	↑
	Quneitra	3,400	2.7	8.0	↑	↑		Quneitra	3,550	1.4	1.4	↑	↑
	Ar-Raqqa	2,800	0.7	22.0	↑	↑		Ar-Raqqa	4,250	2.6	24.5	↑	↑
	Rural Damas cus	4,450	0.6	27.1	↑	↑		Rural Damas cus	3,650	-	-	↔	↔
	As- Sweida	4,000	7.4	14.3	↑	↑		As- Sweida	3,563	1.9	9.6	↑	↑
	Tartous	4,000	-	13.9	↔	↑		Tartous	2,500	-	-	↔	↔
Oil (L)	Aleppo	660	-1.9	-8.4	↓	↓	Tomato paste (kg)	Aleppo	1,113	-2.8	-7.9	↓	↓
	Damas cus	750	-	-	↔	↔		Damas cus	850	-	-	↔	↔
	Dar'a	725	2.0	1.2	↑	↑		Dar'a	650	-	4.5	↔	↑
	Deir-ez-Zor	2,000	-0.6	21.2	↓	↑		Deir-ez-Zor	2,500	-14.0	6.7	↓	↑
	Idleb	613	-1.9	-5.8	↓	↓		Idleb	500	-	48.4	↔	↑
	Hama	775	-	2.5	↔	↑		Hama	850	-3.9	-14.4	↓	↓
	Al- Has akeh	550	-4.3	-11.1	↓	↓		Al- Has akeh	500	0.3	-8.3	↑	↓
	Homs	742	-1.1	4.9	↓	↑		Homs	800	-8.9	-25.9	↓	↓
	Lattak ia	669	-2.6	-9.2	↓	↓		Lattak ia	750	1.7	-	↑	↔
	Quneitra	788	-	-	↔	↔		Quneitra	370	-5.5	-8.5	↓	↓
	Ar-Raqqa	900	-1.1	20.0	↓	↑		Ar-Raqqa	800	-1.1	31.6	↓	↑
	Rural Damas cus	750	-	-3.1	↔	↓		Rural Damas cus	900	-	-	↔	↔
	As- Sweida	800	-2.9	-	↓	↔		As- Sweida	550	-	10.0	↔	↑
	Tartous	738	-1.6	1.4	↓	↑		Tartous	750	1.7	7.7	↑	↑
Parsley (packet)	Aleppo	42	7.8	-45.1	↑	↓	Tomatoes (kg)	Aleppo	147	10.4	-23.6	↑	↓
	Damas cus	39	11.3	-2.5	↑	↓		Damas cus	113	-22.6	-47.2	↓	↓
	Dar'a	75	-16.7	-	↓	↔		Dar'a	75	-16.7	-70.0	↓	↓
	Deir-ez-Zor	150	-	-	↔	↔		Deir-ez-Zor	1,300	-18.7	-	↓	↔
	Idleb	50	-	-	↔	↔		Idleb	500	-	-	↔	↔
	Hama	53	-	25.0	↔	↑		Hama	172	-	-32.3	↔	↓
	Al- Has akeh	75	-	-45.0	↔	↓		Al- Has akeh	155	-11.4	-34.4	↓	↓
	Homs	50	-	16.7	↔	↑		Homs	193	-	-28.0	↔	↓
	Lattak ia	63	25.0	45.8	↑	↑		Lattak ia	105	5.0	-55.6	↑	↓
	Quneitra	20	-26.7	-46.4	↓	↓		Quneitra	83	-45.0	-64.8	↓	↓
	Ar-Raqqa	88	-	-	↔	↔		Ar-Raqqa	225	-7.1	-27.3	↓	↓
	Rural Damas cus	39	-2.5	-2.5	↓	↓		Rural Damas cus	100	-36.4	-55.6	↓	↓
	As- Sweida	50	-33.3	-33.3	↓	↓		As- Sweida	105	-16.0	-64.3	↓	↓
	Tartous	54	72.4	67.0	↑	↑		Tartous	160	16.7	-22.9	↑	↓
Pasta (kg)	Aleppo	508	1.3	4.1	↑	↑	Unskilled Labor wage	Aleppo	2,000	1.3	24.5	↑	↑
	Damas cus	500	-	-	↔	↔		Damas cus	1,600	3.1	6.7	↑	↑
	Dar'a	563	-2.1	-2.1	↓	↓		Dar'a	1,300	2.9	19.2	↑	↑
	Deir-ez-Zor	1,850	-	10.1	↔	↑		Deir-ez-Zor	1,150	-	-	↔	↔
	Idleb	100	-	-	↔	↔		Idleb	2,000	-	18.1	↔	↑
	Hama	600	3.0	54.1	↑	↑		Hama	2,067	3.5	35.6	↑	↑
	Al- Has akeh	283	4.7	1.6	↑	↑		Al- Has akeh	950	-	8.3	↔	↑
	Homs	555	-0.3	51.3	↓	↑		Homs	1,833	5.8	58.7	↑	↑
	Lattak ia	275	-	6.1	↔	↑		Lattak ia	2,000	-	5.6	↔	↑
	Quneitra	450	1.4	64.8	↑	↑		Quneitra	1,350	-	5.6	↔	↑
	Ar-Raqqa	900	-	82.2	↑	↑		Ar-Raqqa	1,900	2.3	17.6	↑	↑
	Rural Damas cus	500	-	-	↔	↔		Rural Damas cus	1,700	6.3	13.3	↑	↑
	As- Sweida	488	2.7	2.7	↑	↑		As- Sweida	2,000	-	33.3	↔	↑
	Tartous	263	-	-5.8	↔	↓		Tartous	1,900	-	12.2	↑	↑
Rice (kg)	Aleppo	518	1.3	0.5	↑	↑	Wheat Flour (kg)	Aleppo	236	-0.6	-6.1	↓	↓
	Damas cus	425	-	-	↔	↔		Damas cus	283	-1.7	-5.8	↓	↓
	Dar'a	500	2.4	2.4	↑	↑		Dar'a	210	-1.1	-1.1	↓	↓
	Deir-ez-Zor	750	-10.0	-14.6	↓	↓		Deir-ez-Zor	400	4.5	3.9	↑	↑
	Idleb	500	-	-2.4	↔	↓		Idleb	213	-	-	↔	↔
	Hama	558	-	-1.8	↔	↓		Hama	257	-2.5	-1.0	↓	↓
	Al- Has akeh	513	0.9	-14.9	↑	↓		Al- Has akeh	225	2.1	-11.5	↑	↓
	Homs	498	-	-6.0	↔	↓		Homs	253	-	12.9	↔	↑
	Lattak ia	500	-	-	↔	↔		Lattak ia	238	-4.4	-2.3	↓	↓
	Quneitra	488	2.5	9.7	↑	↑		Quneitra	205	-	-	↔	↔
	Ar-Raqqa	750	-0.8	28.4	↓	↑		Ar-Raqqa	363	5.6	81.3	↑	↑
	Rural Damas cus	475	-	-	↔	↔		Rural Damas cus	260	-2.8	-9.5	↓	↓
	As- Sweida	325	-	-	↔	↔		As- Sweida	263	-4.4	-4.4	↓	↓
	Tartous	550	-2.4	5.0	↓	↑		Tartous	244	2.9	-1.0	↑	↓
Sheep 2Y old Male	Aleppo	114,125	5.1	77.1	↑	↑	White beans (kg)	Aleppo	488	-1.1	6.3	↓	↑
	Damas cus	112,500	4.5	36.4	↑	↑		Damas cus	475	-	-	↔	↔
	Dar'a	107,500	4.2	50.3	↑	↑		Dar'a	425	8.3	8.3	↑	↑
	Deir-ez-Zor	257,500	-	6.3	↔	↑		Deir-ez-Zor	1,000	-	-25.0	↔	↓
	Idleb	79,000	1.3	-0.6	↑	↓		Idleb	525	50.0	-	↑	↔
	Hama	195,000	6.3	136.7	↑	↑		Hama	580	-2.3	-4.1	↓	↓
	Al- Has akeh	70,000	-	-6.7	↔	↓		Al- Has akeh	550	-	-30.0	↔	↓
	Homs	111,333	-	37.2	↔	↑		Homs	650	7.3	17.0	↑	↑
	Lattak ia	94,600	2.4	35.6	↑	↑		Lattak ia	663	2.6	-0.6	↑	↓
	Quneitra	120,000	1.7	13.4	↑	↑		Quneitra	463	0.3	16.8	↑	↑
	Ar-Raqqa	60,000	-	20.0	↔	↑		Ar-Raqqa	738	-	0.2	↔	↑
	Rural Damas cus	110,250	4.9	27.9	↑	↑		Rural Damas cus	550	-	2.9	↔	↑
	As- Sweida	86,125	-0.6	18.2	↓	↑		As- Sweida	538	2.5	2.5	↑	↑
	Tartous	89,925	4.9	27.9	↑	↑		Tartous	700	9.7	29.6	↑	↑
Sugar (kg)	Aleppo	353	-1.3	-11.3	↓	↓	Yogurt (kg)	Aleppo	380	1.9	-6.2	↑	↓
	Damas cus	363	-0.7	-14.6	↓	↓		Damas cus	270	-1.7	-13.7	↓	↓
	Dar'a	355	-2.0	-13.3	↓	↓		Dar'a	325	6.3	9.4	↑	↑
	Deir-ez-Zor	1,750	-14.3	-5.8	↓	↓		Deir-ez-Zor	925	-	5.5	↔	↑
	Idleb	450	-	-1.1	↔	↓		Idleb	250	-	18.1	↔	↑
	Hama	348	-5.5	-15.0	↓	↓		Hama	458	0.3	7.6	↑	↑
	Al- Has akeh	400	-	-1.0	↔	↓		Al- Has akeh	300	-	41.7	↔	↑
	Homs	345	-	-13.4	↔	↓		Homs	307	-	12.9	↔	↑
	Lattak ia	373	-3.3	-6.3	↓	↓		Lattak ia	275	-	2.3	↔	↑
	Quneitra	388	-2.9	-5.2	↓	↓		Quneitra	200	-6.8	-15.8	↓	↓
	Ar-Raqqa	500	-	11.1	↔	↑		Ar-Raqqa	400	-	57.3	↔	↑
	Rural Damas cus	338	-6.3	-25.0	↓	↓		Rural Damas cus	250	-	-8.3	↔	↓
	As- Sweida	353	-3.7	-11.8	↓	↓		As- Sweida	275	-	-	↔	↔
	Tartous	394	-0.3	-3.8	↓	↓		Tartous	319	2.0	10.9	↑	↑