



Food and Agriculture  
Organization of the  
United Nations

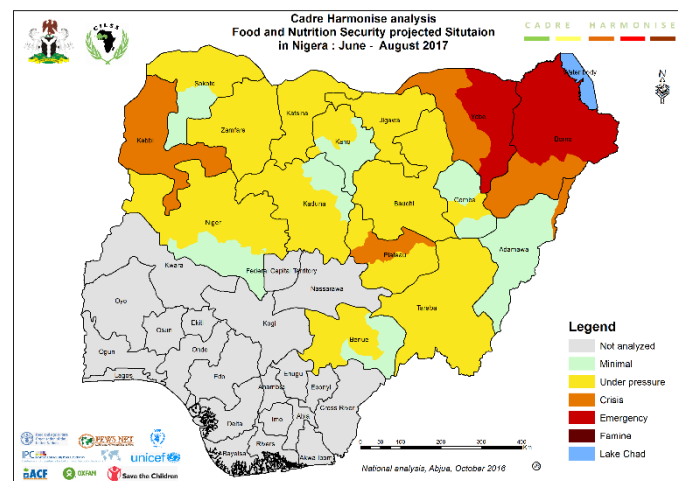
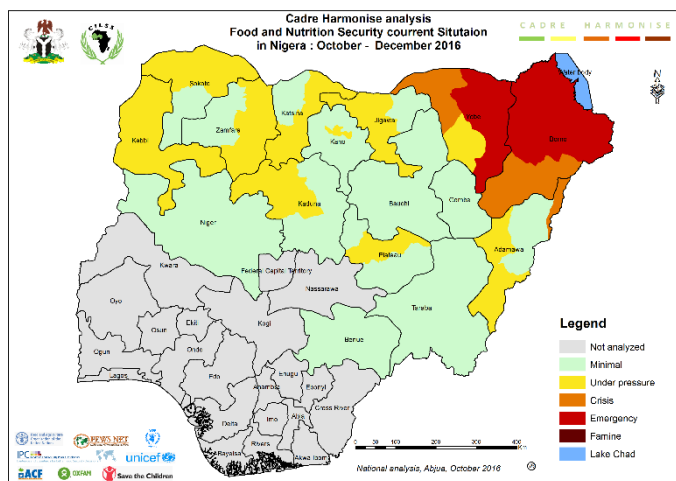


Permanent Interstate Committee for Drought  
Control in The Sahel (CILSS)



## Cadre Harmonisé for Identifying Risk Areas and Vulnerable Populations in Sixteen (16) States of Nigeria

Nigeria	Results of Analysis of Current (October – December 2016) and Projected (June – August 2017) Situations of Acute Food and Nutrition Insecurity	Created on: 28/10/2016
<p><b>Main results for zones affected by food and nutrition insecurity in the 16 states of Adamawa, Bauchi, Benue, Borno, Gombe, Jigawa, Kaduna, Kano, Katsina, Kebbi, Niger, Plateau, Sokoto, Taraba, Yobe and Zamfara</b></p> <p> <b>Food Consumption:</b> Food consumption level across the 16 states is in crisis situation. In some states, many households are facing extreme food deficits, resulting in high acute malnutrition.</p> <p> <b>Evolution of livelihoods:</b> In most parts of the states assessed, normal household activities continue. However, households are facing disrupted livelihoods in conflict affected and displacement affected states, as well as in areas affected by hazards such as floods.</p> <p> <b>Nutrition:</b> The analysis indicated that the 6 states of Borno, Katsina, Kebbi, Sokoto, Yobe and Zamfara are facing critical nutritional status.</p> <p> <b>Mortality: N/A</b></p>	<p>The Cadre Harmonisé (CH) is a current regional framework aimed to prevent food crisis by quickly identifying affected populations and proffering appropriate measures to improve their food and nutrition security. This analysis used the food and nutrition security outcome indicators corroborated by relevant contributing factors to identify the food and nutrition insecure areas within sixteen northern states of Nigeria.</p> <p>Three of the sixteen states (Adamawa, Borno and Yobe) have been severely affected by insurgency. Four states (Gombe, Kaduna, Plateau and Taraba) also have some population impacted by communal conflict; while the remaining nine states have been affected by adverse climatic conditions.</p> <p>The food consumption status across the sixteen states indicates stressed situation in Gombe, Jigawa, Kano, Katsina, and Taraba; crisis situation in Kaduna, Kebbi and Yobe; and an emergency situation in Borno. In the other states, food consumption status reflects a minimal situation.</p> <p>Livelihoods in Bauchi, Gombe, Jigawa, Katsina and Zamfara are stressed, while livelihoods in Adamawa, Niger, Plateau, Taraba and Yobe are in the crisis phase. Households in these affected states have adopted severe coping strategies. Despite the humanitarian assistance in Borno state, livelihoods remain in an emergency phase.</p> <p>The prevalence of Global Acute Malnutrition (GAM) is within the crisis/emergency threshold in Borno, Katsina, Kebbi, Sokoto, Yobe and Zamfara states; and within stressed threshold in Benue, Niger, Plateau and Taraba states.</p> <p>Staple food and cash crops production is below average in Borno, Plateau and Yobe states. Major shocks in the states include conflict, flood, dry spells and pests. Food availability will increase during October to December as the harvest peaks and is expected to decline towards the lean season. Pastoral resources such as pasture and water for livestock will be available for a limited period.</p> <p>The prices of staple food crops across the states are extremely high due to inflationary pressure in the economy. Food prices are expected to continue increasing in coming months. Households are facing challenges in accessing staple food due to their reduced purchasing power.</p> <p>The analysis indicated that most households in the North West and North Central zones have food stocks that may last only 4 – 5 months, while food stocks in the North East are very limited.</p> <p>The CH analysis also identified that over 100,000 and 5,000 populations in Borno and Yobe states respectively may experience famine (CH Phase 5) in June – August 2017, even though no area was classified at that level. Thus, the food security situation of populations in Borno and Yobe states will deteriorate if urgent interventions are not put in place to alleviate the situation.</p>	



## Main results and problems

### Hazard and vulnerability

The sixteen states assessed are affected by various hazards and vulnerability, especially the insurgency that has displaced more than two million persons across several states. Currently there are over 2million, 122,000 and 123,000 internally displaced persons (IDPs) in Borno, Adamawa and Yobe states respectively. Similarly, there are over 41,000, 32,000, 29,000 and 10,000 IDPs in Gombe, Taraba, Kaduna and Plateau states respectively. Though the conflict has declined in Adamawa, Borno and Yobe states and some of the IDPs have started returning to their communities, displacement continues in some affected areas in the North East. The insecurity and displacement have led to low market functioning, reduced land cultivation and destruction of infrastructure such as water pipelines, bridges, health centers, schools, roads, and other social amenities.

In the projected period (June to August 2017), there are indications that the situation in Adamawa and Yobe will further improve. However, the spill-over effect of the insurgency impacting other areas will continue to have varied negative impacts on the outcome indicators of food consumption, livelihoods and nutrition. The negative impact will be strong in Borno state and light in Adamawa and Yobe states. In these conflict affected states, IDP population is expected to increase in certain areas, like Maiduguri, Borno state, as returnees and newly liberated individuals will move to the urban centers. In Adamawa, Benue, Kaduna, Plateau and Yobe states, more IDPs will likely return to their communities.

Generally, insurgency has had minimal impact on outcome indicators in Jigawa, Kano, Katsina, Kebbi and Sokoto states. Nevertheless, other hazards and vulnerability such as cattle rustling, communal conflict, floods, and dry spell are important issues in the North West and North Central states.

### Food availability

Staple food and cash crops production was above average in some states such as Jigawa, Kano, Katsina, Kebbi and Sokoto states, while some states like Borno, Plateau and Yobe states experienced below average production. Some areas were affected by conflict, flood, dry spells and pests. Food availability in some states is expected to decline towards the lean season, although the impact may be reduced by irrigated farming. Pastoral resources such as pasture and water for livestock will be available for a limited period. For households with below average crop production, stocks will also be below average and will be depleted earlier than normal.

### Food access

The prices of staple food crops across the states were extremely high compared to the five year averages (with margins of 100% – 200% increase); this is due to inflationary pressure in the economy. Similarly, prices were also higher relative to last year same period. However, prices of both staples and cash crops will decline as the harvest peaks across the country during November to December. The prices are expected to increase towards the lean season (June – August 2017). Thus, households will face challenges in accessing staple foods due to reduced purchasing power. In the North East, even though the security situation has improved, trade routes linking some markets remain insecure.

## Food Utilization including Water

Access to potable water remained limited across the 16 states and worse in the conflict affected states. Acute malnutrition prevalence rates approached critical levels in Borno, Katsina, Kebbi, Sokoto and Zamfara states.

**Table 1: Identification of food insecurity zones for the current and projected situation**

State	October - December 2016						June - August 2017					
	Total	Ph1	Ph2	Ph3	Ph4	Ph5	Total	Ph1	Ph2	Ph3	Ph4	Ph5
ADAMAWA	5	1	1	3	0	0	5	2	0	3	0	0
BAUCHI	3	3	0	0	0	0	3	0	3	0	0	0
BENUE	3	3	0	0	0	0	3	1	2	0	0	0
BORNO	3	0	0	1	2	0	3	0	0	1	2	0
GOMBE	3	3	0	0	0	0	3	2	1	0	0	0
JIGAWA	3	1	2	0	0	0	3	0	3	0	0	0
KADUNA	3	2	1	0	0	0	3	1	2	0	0	0
KANO	3	2	1	0	0	0	3	1	2	0	0	0
KATSINA	3	1	2	0	0	0	3	0	3	0	0	0
KEBBI	3	0	3	0	0	0	3	0	0	3	0	0
NIGER	3	3	0	0	0	0	3	1	2	0	0	0
PLATEAU	3	2	1	0	0	0	3	2	0	1	0	0
SOKOTO	3	1	2	0	0	0	3	1	2	0	0	0
TARABA	3	3	0	0	0	0	3	0	3	0	0	0
YOBE	3	0	1	1	1	0	3	0	0	2	1	0
ZAMFARA	3	1	2	0	0	0	3	0	3	0	0	0
TOTAL	50	26	16	5	3	0	50	11	26	10	3	0

**Table 2: Estimation of population per phase of food and nutrition insecurity in the current situation – October to December 2016 (PLS ROUND THE FIGURES)**

2nd Administrative level STATE	Total population	CURRENT SITUATION: OCTOBER - DECEMBER 2016					
		Total population in Phase 1	Total population in Phase 2	Total population in Phase 3	Total population in Phase 4	Total population in Phase 5	Total population in Phase 3 to 5
ADAMAWA	4 196 999	3 041 614	897 958	251 612	5 815	-	257 427
BAUCHI	6 593 116	5 770 458	605 327	217 331	-	-	217 331
BENUE	5 247 397	4 616 853	497 726	132 818	-	-	132 818
BORNO	5 511 759	937 924	1 307 498	1 823 462	1 387 862	55 013	3 266 337
GOMBE	3 227 471	2 773 688	453 783	-	-	-	-
JIGAWA	5 782 600	4 523 822	1 080 211	178 567	-	-	178 567
KADUNA	8 263 574	6 652 155	1 399 072	212 348	-	-	212 348
KANO	14 828 136	11 926 278	2 586 081	315 777	-	-	315 777
KATSINA	7 558 000	5 143 292	1 712 540	702 168	-	-	702 168
KEBBI	4 629 880	1 214 028	2 579 878	835 974	-	-	835 974
NIGER	5 714 988	4 703 143	916 258	95 588	-	-	95 588
PLATEAU	4 146 442	2 941 118	1 025 700	167 561	12 063	-	179 624
SOKOTO	5 218 629	3 803 124	1 097 164	318 341	-	-	318 341
TARABA	3 142 715	2 710 939	368 284	63 492	-	-	63 492
YOBE	3 280 832	1 169 408	962 350	725 465	423 609	-	1 149 074
ZAMFARA	4 626 716	3 398 279	1 072 226	156 211	-	-	156 211
TOTAL	91 969 254	65 326 124	18 562 054	6 196 715	1 829 349	55 013	8 081 077

**Table 3: Estimation of population per phase of food and nutrition insecurity in the projected situation – June to August 2017**

2nd administrative level STATE	Total population	PROJECTED SITUATION: JUNE - AUGUST 2017					
		Total population in Phase 1	Total population in Phase 2	Total population in Phase 3	Total population in Phase 4	Total population in Phase 5	Total population in Phase 3 to 5
ADAMAWA	4 196 999	3 172 190	820 060	202 904	1 845	-	204 749
BAUCHI	6 593 116	5 075 819	1 051 984	465 314	-	-	465 314
BENUE	5 247 397	4 025 212	819 062	403 124	-	-	403 124
BORNO	5 511 759	706 278	1 164 184	2 021 909	1 503 677	115 711	3 641 297
GOMBE	3 227 471	2 642 652	576 692	8 127	-	-	8 127
JIGAWA	5 782 600	4 307 351	1 195 360	279 888	-	-	279 888
KADUNA	8 263 574	6 261 093	1 676 986	325 496	-	-	325 496
KANO	14 828 136	11 260 345	3 103 732	464 059	-	-	464 059
KATSINA	7 558 000	4 208 619	2 217 149	1 132 233	-	-	1 132 233
KEBBI	4 629 880	648 741	2 864 777	1 084 838	31 525	-	1 116 362
NIGER	5 714 988	4 476 065	1 104 898	134 026	-	-	134 026
PLATEAU	4 146 442	2 554 558	1 250 168	317 591	24 126	-	341 716
SOKOTO	5 218 629	3 143 092	1 526 955	548 582	-	-	548 582
TARABA	3 142 715	2 270 959	651 128	220 628	-	-	220 628
YOBE	3 280 832	734 954	1 273 173	801 458	465 668	5 579	1 272 705
ZAMFARA	4 626 716	2 712 274	1 585 395	329 047	-	-	329 047
TOTAL	91 969 254	58 200 200	22 881 702	8 739 221	2 026 840	121 290	10 887 352



## Methodology

The Cadre Harmonisé analysis was conducted at zonal level, in the 3 senatorial zones in each of the 16 states (as well as in Madagali and Michika LGAs in Adamawa) – Table 1. In the current situation, there was no zone classified in phase 5 (famine) but there were 3 zones in phase 4 (emergency) and 5 zones in phase 3 (crisis). In the projected situation, the zones in phase 3 will increase from 5 zones to 10 zones. The Cadre Harmonisé is a global analytical framework of national and regional system for food crisis prevention and management taking into account various outcome indicators for food and nutrition security and the impact of contributing factors. The first stage of the CH analysis for Nigeria was conducted across the 16 states from 17<sup>th</sup> to 21<sup>st</sup> October, 2016. This stage culminated in a review and consolidation workshop in Abuja from 24<sup>th</sup> to 28<sup>th</sup> October, 2016. Generally, the methodology adapted and used for the analysis and in the consolidation process has been identical across the 16 states. This approach is in line with the Cadre Harmonisé meta-analysis procedures segmented in five steps. The result of the analysis which is further communicated is obtained through convergence of evidence and consensus building to classify the severity of food insecurity and estimate affected population for current and projected situations.

The process was jointly led by the Federal Ministry of Agriculture and Rural Development and FAO Nigeria and included the participation of Federal Ministry of Health, National Planning Commission, National Bureau of Statistics, National Emergency Management Agency, similar agencies across the 16 states, UN agencies including WFP, UN OCHA, UNICEF, WHO, IFAD; development partners/INGOs including FEWS NET, ACF, Save the Children, Oxfam, and NGOs operating at state level. The process is jointly facilitated by CILSS, FAO Regional Office, WFP Regional Office and Oxfam Regional Office.



## Recommendations

### To decision makers:

1. Immediate emergency humanitarian assistance is needed to improve food and nutrition security situation, save lives and protect livelihood conditions.
2. Considering the critical malnutrition across sixteen states of the country most especially in the north east, intervention programs are required to address the problem.
3. High inflationary trend militating against food access across the sixteen states need to be addressed.
4. Commitment to the sustenance of the Cadre Harmonisé process is required from State and Federal levels.
5. The conduct of Food Security and Nutrition Assessments prior to each CH analysis is advisable in order to have the food security indicators required for the analysis. Future data should be collected to be representative at the LGA level.

### To CILSS and Partners:

6. Local and International NGO's should support the CH analysis at all levels in order to provide evidence based data.
7. Additional training to support the analytical capacity of CH personnel at State and Federal levels is required in order to strengthen future analyses.
8. CH analysis should be carried out at the LGA level in all the states in order to appreciate more details about the food and nutrition security situation. This is informed by some recent data from Borno state showing very critical levels of food consumption and worrying levels of malnutrition and mortality rates. Since the CH analysis has been conducted at the senatorial zones and does not give enough information about the reality in the LGAs, it was identified that further analysis is needed for Borno State where two senatorial zones had been found in Emergency (Phase 4), to determine whether or not there is actually Famine (CH Phase 5) occurring in some areas of the state.



## Contacts

**Dr. Shehu Ahmed,**  
Permanent Secretary,  
Federal Ministry of Agriculture  
and Rural Development  
Area 11, Garki, Abuja Nigeria

**Nourou Macki Tall**  
FAO Representative in Nigeria a.i  
UN House, Plot 617/618 Diplomatic Zone  
Central Area District, Garki, Abuja, Nigeria  
Tel: +234 803 408 0466 e-mail: [nouroumacki.tall@fao.org](mailto:nouroumacki.tall@fao.org)

### Partners in the analysis



Food and Agriculture  
Organization of the  
United Nations



Save the Children



Donors

