

Highlights

- The Government of Iraq has announced Iraq's victory over ISIL. For the first time since December 2013, the number of returnees has surpassed the number of IDPs.
- Food prices decreased by 1% across the country, with markets showing higher integration than in the past few months.
- Prices in Kirkuk drastically dropped, while a relevant increase was registered in Babylon, Baghdad, Ninewa and Salh Al-Din.
- The Alert for Price Spikes (ALPS) indicator shows khoboz bread to be at alert level.
- The wage of unskilled labour has increased by 1% across the country. The terms of trade has increased by 2% on national basis.

Socioeconomic Background

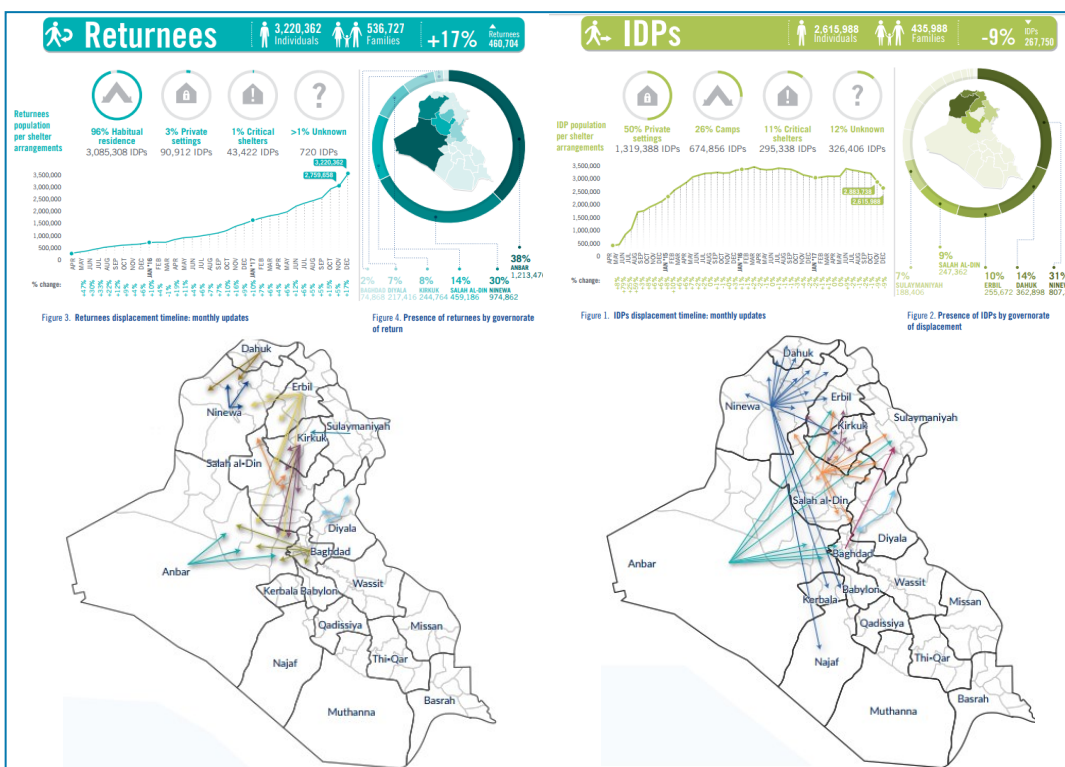
For the first time since the beginning of the Iraq crisis in December 2013, the number of people returning to their area of origin has surpassed the number of people displaced in the country.

Over the past four years, the country has been deeply affected by the conflict with ISIL, which led to the displacement of nearly six million people. Prime Minister Abadi announced Iraq's victory over ISIL on 9 December 2017. By the end of 2017 IOM identified 3.2 million people, who

have returned back to their place of origin, while a staggering 2.6 million remained displaced.

Following the improvement of the security situation in retaken areas, a sizable number of internally displaced Iraqis have returned to their location of origin, mainly to the Governorates of Anbar, Ninewa and Salah al-Din

The below dashboard describes the most recent updates regarding IDPs and returnees¹.



Contacts

Sally Haydock
sally.haydock@wfp.org

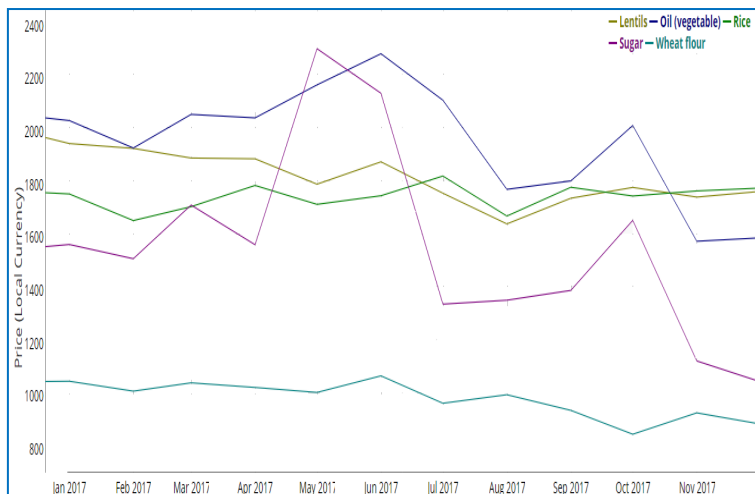
Maha Ahmed
maha.ahmed@wfp.org

Asif Niazi
asif.niazi@wfp.org

Food National Price Trends

In December 2017 food prices showed a general stabilization compared to November (Chart 1). Most commodities indeed didn't show particular surge or drop in their prices. Exception is made for sugar (-6%) and milk (-7%). A slight decrease was also registered for wheat flour (-4%) and onions (-1%). A 1% increase was instead registered for beef, vegetable oil, lentils and rice.

Chart 1: Price Trend of Main Food Commodities (in IQD/Unit)



However, food prices have followed very different paths across governorates. Lentils were found more expensive compared to November in Ninewa (11%), while the price decreased in Muthanna (-24%), Babylon (-11%) and Kirkuk (-7%). On the other hand beef saw a decrease in Dahuk (-4%), while its price increased in Kirkuk (14%), Quadyssia (10%) and Babylon (8%). Price of fresh milk across Iraq was very volatile with remarkable drop in Dahuk (-56%) and Kirkuk (-39%). Vegetable oil also saw a sharp decrease in Kirkuk (-12%) and Baghdad (-11%), while it increased in Muthanna, Salah Al-Din

and Babylon by 13%, 12% and 10% respectively. Similarly, onions in Kirkuk registered a high decrease in prices (-33%) followed by Quadyssia (-10%), while the price increased by 9% in Ninewa. When it comes to rice, the commodity showed a generally upward trend in December with exception of Kirkuk where the price decreased by 30%. A similar behavior was witnessed for

Map 1: Change of food basket price from previous month

sugar where Kirkuk stands out as the only governorate with significant change in prices (-48%). Wheat flour had a quite volatile behavior across Iraq, with the highest increase in Baghdad (22%) and the highest decrease in Kirkuk (-29%). Ninewa, Salah Al-Din, Baghdad and Babylon are the governorates with the sharpest overall increase of food prices, while Kirkuk prices keep decreasing for the second month in a row (Map 1). Basrah and Missan are the governorate that in December registered the highest cost of the food basket, approximately 20% higher than Sulaymanyah where the lowest food prices are found (Chart 2b).

Thanks to the continued drop in prices in Kirkuk, markets are witnessing a higher integration after three months of divergence.

The volatility of the situation in the country contributes to an extreme behavior of prices in some governorates. In the case of Kirkuk, all main commodities were found to be cheaper in December compared to November, with

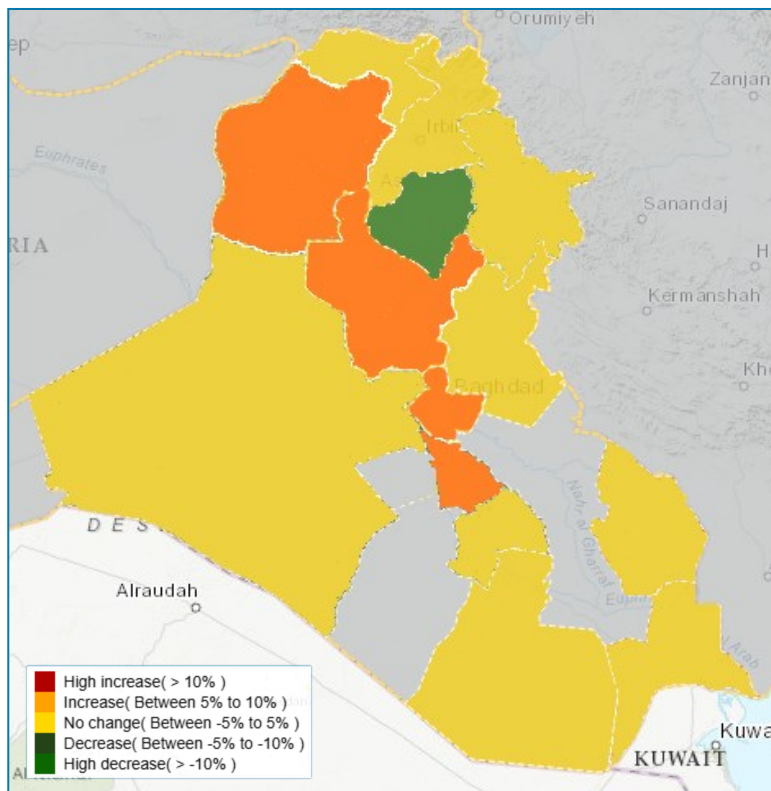
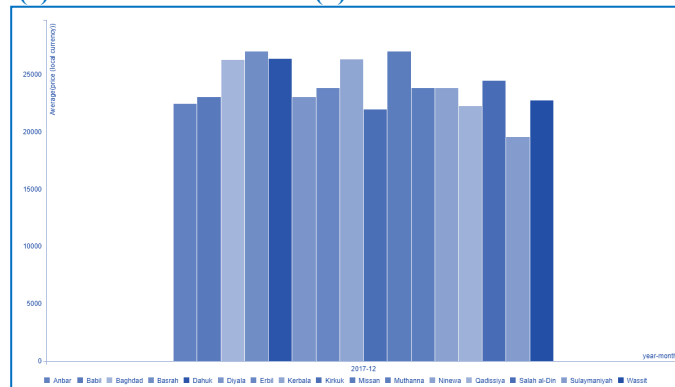
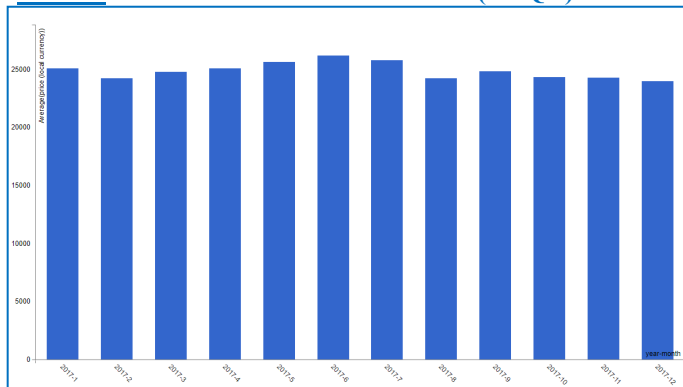


Chart 2: Cost of Minimum Food Basket (in IQD) at national (a) and sub-national level (b)

exception of meat (14% higher). No other governorates showed a similar decreasing trend. On the other hand, Salah Al-Din showed a general increase in prices with the exception of sugar which decreased by 5%. Similarly Babylon saw the prices of all commodities increase with the exception of lentils that were found to be 11% cheaper than in November.

Chart 3: Availability Analysis

Governorate	Wheat flour	Meat (beef)	Milk	Sugar	Onions	Lentils	Rice	Oil (vegetable)
Anbar	AV	AV	AV	AV	AV	AV	AV	AV
Babil	AV	AV	AV	AV	AV	AV	AV	AV
Baghdad	AV	AV	AV	AV	AV	AV	AV	AV
Basrah	WAV	WAV	WAV	WAV	WAV	WAV	WAV	WAV
Dahuk	AV	AV	AV	AV	AV	AV	AV	AV
Diyala	AV	AV	AV	AV	AV	AV	AV	AV
Erbil	WAV	WAV	WAV	WAV	WAV	WAV	WAV	WAV
Karbala	AV	AV	AV	AV	AV	AV	AV	AV
Kirkuk	AV	AV	SAV	AV	AV	AV	AV	AV
Missan	WAV	WAV	WAV	WAV	WAV	WAV	WAV	WAV
Muthanna	MNA	MNA	MNA	MNA	MNA	MNA	MNA	MNA
Ninewa	AV	AV	AV	AV	AV	AV	AV	AV
Qadisiya	AV	AV	AV	AV	AV	AV	AV	AV
Salah al-Din	AV	AV	AV	AV	AV	AV	AV	AV
Sulaymaniyah	AV	AV	AV	AV	AV	AV	AV	AV
Wassit	AV	AV	AV	AV	AV	AV	AV	AV

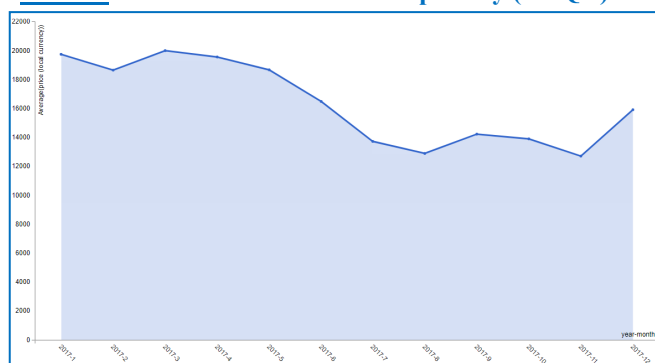
The above described fluctuations and the general decrease in price of main commodities have slightly succeeded to improve the purchasing power of the Iraqi population. The national food basket in fact decreased by 1%, continuing on the decreasing trend since September (Chart 2a).

In terms of availability the situation is positive. However, main commodities were difficult to find in Muthanna, Missan, Basrah and Erbil. Milk was scarcely available in Kirkuk. Full availability of main commodities was registered everywhere else (Chart 3).

It has also to be considered that no data were collected for Thi-Qar and Najaf in December. It also must be taken into consideration that averages don't include locations where food commodities are reported as not available or where key informants have not answered the calls (see Methodology).

Unskilled Labour and Wage-to-Wheat Terms of Trade (ToT)

The cost of unskilled labour in December increased by 1% across the country (Chart 4). Unskilled labour costs were significantly higher compared to November in Babylon, Diyala, Kirkuk, Salah Al-Din and Sulaymaniyah. Wages of casual labourers were instead particularly lower in Erbil (-17%). As a consequence of higher wages and increased costs of wheat flour, the wage-to-wheat terms of trade (ToT) increased only by 2% at the national level (Chart 5).

Chart 4: Cost of Unskilled Labour per day (in IQD)**Chart 5: Wage-to-Wheat ToT (in KGs of wheat flour/day)**

Alert for Price Spikes (ALPS)

According to the Alert for Price Spikes (ALPS) indicator, the food basket was still at normal level everywhere in Iraq when compared to the seasonally adjusted index (Map 2). Nevertheless, as shown in the charts below, khoboz bread price is at alert level for the fourth month in a row. Charts 3b and 3c show the trends of the food basket and khoboz bread. The ALPS indicator also provides a 3-month forecast. In this sense, the price of the food basket is expected to stabilize in the next quarter. Khoboz bread price forecast is instead volatile.

Map 2: Alert for Price Spikes of food basket in Iraq

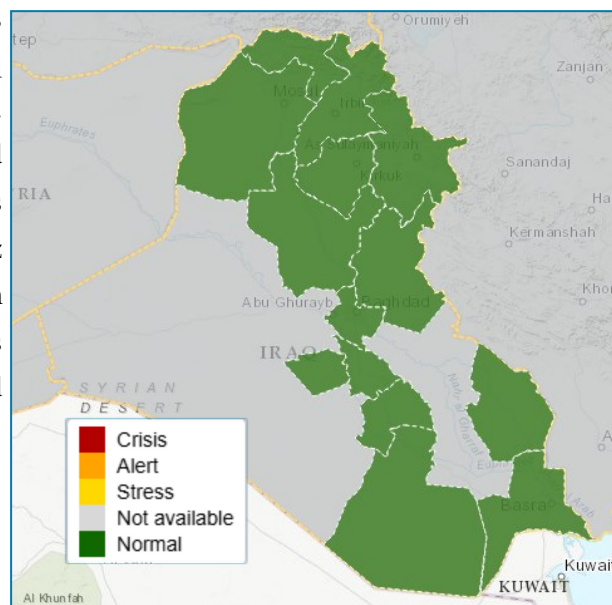
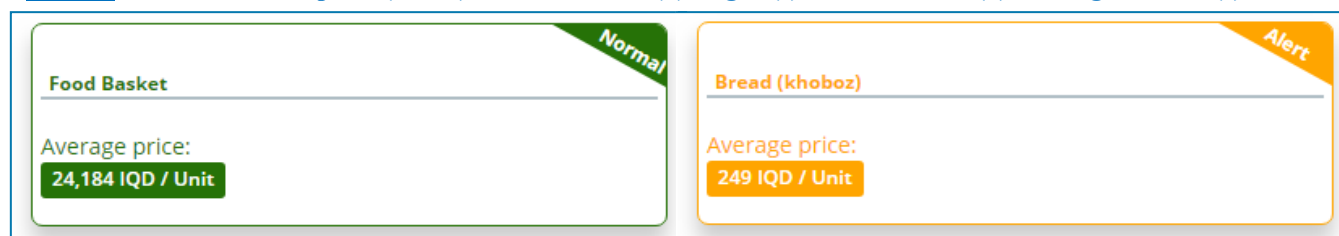


Chart 3: Alert for Price Spikes (ALPS) for food basket (b), sugar (c), khoboz bread (d) and vegetable oil (e)



Methodology

Market information is collected on weekly basis by WFP field monitors. Additionally WFP in partnership with Islamic Relief Worldwide (IRW) collects market data remotely through mVAM technology from key informants in those governorates where access is restricted, using telephone interviews. Data are then cleaned and consolidated. Monthly averages are used for the Iraq Monthly Monitor Report. Field monitors collect prices for 23 food commodities, 3 fuel items, 7 hygiene commodities and the cost of unskilled labour. WFP field monitors cover 12 governorates where access is not restricted plus three additional governorates (Kirkuk, Baghdad and Diyala) when the security situation allows. IRW key informants collect market prices of 8 main food commodities and the daily wage of unskilled labour from six hard-to-reach areas in central and northern governorates of Iraq (Anbar, Baghdad, Diyala, Kirkuk, Ninewa and Salah Al-Din) through mVAM technology.

The report is based on the analyses produced by the [Safety Nets Alert Platform \(SNAP\)](#) which replaces the Integrated Market Surveillance Tool (IMST). Through automated analysis, SNAP platform analyzes trends of main food and non-food commodities, minimum food basket, providing an indication of how much the markets are integrated in the country. In addition SNAP produces an early warning indicator (ALPS) with a 3-month forecast for each relevant commodity and at subnational level. Food and non-food prices are analyzed against previous periods. Availability is also assessed.

AV	Available
WAV	Widely Available
SAV	Scarcely Available
MNA	Mostly Not Available
NA	Not Available
DNC	Data not collected

The classification of the availability is based on the monthly averages. A commodity is classified as **Available** when it is found available on every visit in the key market of a specific governorate; **Widely Available** when for only one visit the availability is not full; **Sporadically Available** when in at least half of the visits, the item is recorded as rare in the market; a commodity is **Mostly Not Available** when it was found only in rare cases in a governorate during the analyzed month; finally a item is classified as **Not Available** when it is not found in any market of a governorate at all.

The Alert for Price Spikes (ALPS) is a WFP-developed indicator calculated as follows $ALPS = \frac{(Price_{it} - Season_{it})}{\sigma_{\varepsilon}}$. It is computed for each month (t) by dividing the difference between the observed and estimated seasonal price of a commodity (i) by the standard deviation of the error term (σ_{ε}).

Situation on a given market :	ALPS thresholds :
Normal	$ALPS < 0.25$
Stress	$0.25 \leq ALPS < 1$
Alert	$1 \leq ALPS < 2$
Crisis	$ALPS \geq 2$

The minimum food basket monitored by WFP contains five food commodities. The quantities are adjusted against the survival caloric intake needs. The five commodities are wheat flour (6.75Kg), sugar (1Kg), rice (6.75Kg), vegetable oil (0.9L) and lentils (1.8Kg). The food basket analyzed is the monthly minimum food basket per household.

This bulletin integrates the information provided by the mVAM Flash Updates on specific areas of the country that deserve specific attention. Occasionally the IMST is used to provide customized analyses on hard-to-reach areas. The Iraq Market Monitor Report is issued since August 2016 on a monthly basis.

NOTE: Due to the long-lasting conflict in Falluja and Mosul, and the related impact on markets, to avoid distortions on average prices and maintain consistency over time, the two districts have been removed from the analysis.

An interactive version of the analysis presented in this bulletin, along with additional details, can be found on [SNAP website](#) (click [here](#) to request for an account)

Annex 1: Market Prices by Governorate

Governorate	Commodity	Current Month	Previous Period				% Change From the Previous Period				Direction of Change				Governorate	Commodity	Current Month	Previous Period				% Change From the Previous Period				Direction of Change			
			1 M	3 M	6 M	1 Yr	Period				1 M	3 M	6 M	1 Yr				1 M	3 M	6 M	1 Yr	Period				1 M	3 M	6 M	1 Yr
							1 M	3 M	6 M	1 Yr												(+/-5%)	(+/-10%)	(+/-15%)	(+/-10%)				
Anbar	Food Basket	22,528.29	22,159.00	21,641.57	23,015.00	25,276.85	2%	4%	-2%	-11%	↔	↔	↔	↔	Misan	Food Basket	27,100.00	27,100.00	27,100.00	26,950.00	28,000.00	0%	0%	1%	-3%	↔	↔	↔	↔
	Lentils	1,473.68	1,470.00	1,531.48	1,700.00	1,731.48	0%	4%	-13%	-15%	↔	↔	↔	↔		Lentils	2,500.00	2,500.00	2,500.00	2,393.33	3,000.00	0%	0%	7%	-17%	↔	↔	↔	↔
	Meat (beef)	10,315.79	10,640.00	11,425.93	11,200.00	10,592.59	-3%	-10%	-8%	-3%	↔	↔	↔	↔		Meat (beef)	13,000.00	13,000.00	13,000.00	13,000.00	14,000.00	0%	0%	0%	-7%	↔	↔	↔	↔
	Milk	2,039.47	2,030.00	1,861.11	1,800.00	2,092.59	0%	10%	13%	-3%	↔	↔	↔	↔		Milk	1,500.00	1,500.00	1,500.00	1,500.00	2,875.00	0%	0%	0%	-48%	↔	↔	↔	↔
	Oil (vegetable)	1,651.32	1,600.00	1,620.37	1,750.00	1,925.93	3%	2%	-6%	-14%	↔	↔	↔	↔		Oil (vegetable)	1,500.00	1,500.00	1,500.00	1,666.67	1,500.00	0%	0%	-10%	0%	↔	↔	↔	↔
	Onions	743.42	754	824.07	650	787.04	-1%	-10%	14%	-6%	↔	↔	↔	↔		Onions	750	750	750	583.33	1,000.00	0%	0%	29%	-25%	↔	↔	↔	↔
	Rice	1,855.26	1,750.00	1,705.93	1,650.00	1,750.00	6%	9%	12%	6%	↔	↔	↔	↔		Rice	2,000.00	2,000.00	2,000.00	2,000.00	2,000.00	0%	0%	0%	0%	↔	↔	↔	↔
	Sugar	1,052.63	1,036.00	1,074.07	1,100.00	1,351.85	2%	-2%	-4%	-22%	↔	↔	↔	↔		Sugar	1,000.00	1,000.00	1,000.00	1,000.00	1,000.00	0%	0%	0%	0%	↔	↔	↔	↔
	Wage (casual labour)	20,142.86	20,600.00	21,666.67	19,000.00	18,888.89	-2%	-7%	6%	7%	↔	↔	↔	↔		Wage (casual labour)	25,000.00	25,000.00	25,000.00	25,000.00	25,000.00	0%	0%	0%	0%	↔	↔	↔	↔
	Wheat flour	713.16	774	716.67	910	1,075.93	-8%	0%	-22%	-34%	↔	↔	↔	↔		Wheat flour	1,000.00	1,000.00	1,000.00	1,000.00	1,000.00	0%	0%	0%	0%	↔	↔	↔	↔
Babil	Food Basket	23,134.38	22,093.75	25,187.50	26,165.63	25,187.50	5%	-8%	-12%	-8%	↔	↔	↔	↔	Muthanna	Food Basket	23,927.50	24,737.50	26,425.00	28,112.50	28,112.50	-3%	-9%	-15%	-15%	↔	↔	↔	↔
	Lentils	1,500.00	1,687.50	2,500.00	2,500.00	2,000.00	-11%	-40%	-40%	-25%	↔	↔	↔	↔		Lentils	1,716.67	2,250.00	2,250.00	2,000.00	2,000.00	-24%	-24%	-14%	-14%	↔	↔	↔	↔
	Meat (beef)	13,500.00	12,500.00	10,000.00	13,000.00	13,000.00	8%	35%	4%	4%	↔	↔	↔	↔		Meat (beef)	12,500.00	12,500.00	12,000.00	7,500.00	7,500.00	0%	4%	67%	67%	↔	↔	↔	↔
	Milk	1,437.50	1,375.00	1,000.00	2,000.00	2,000.00	5%	44%	-28%	-28%	↔	↔	↔	↔		Milk	1,250.00	1,250.00	1,000.00	1,500.00	1,500.00	0%	25%	-17%	-17%	↔	↔	↔	↔
	Oil (vegetable)	1,437.50	1,312.50	1,250.00	2,250.00	2,250.00	10%	15%	-36%	-36%	↔	↔	↔	↔		Oil (vegetable)	1,416.67	1,250.00	1,250.00	1,750.00	1,750.00	13%	13%	-19%	-19%	↔	↔	↔	↔
	Onions	750	750	750	1,000.00	750	0%	0%	-25%	0%	↔	↔	↔	↔		Onions	750	750	500	500	750	0%	50%	50%	0%	↔	↔	↔	↔
	Rice	2,187.50	2,000.00	2,000.00	1,500.00	1,500.00	9%	9%	46%	46%	↔	↔	↔	↔		Rice	1,916.67	2,000.00	2,000.00	2,000.00	2,000.00	-4%	-4%	-4%	-4%	↔	↔	↔	↔
	Sugar	1,000.00	1,000.00	1,000.00	1,500.00	1,000.00	0%	0%	-33%	0%	↔	↔	↔	↔		Sugar	1,000.00	1,000.00	1,000.00	1,000.00	1,000.00	0%	0%	0%	0%	↔	↔	↔	↔
	Wage (casual labour)	18,750.00	16,250.00	10,000.00	30,000.00	30,000.00	15%	88%	-38%	-38%	↔	↔	↔	↔		Wage (casual labour)	15,000.00	15,000.00	10,000.00	25,000.00	25,000.00	0%	50%	-40%	-40%	↔	↔	↔	↔
	Wheat flour	500	500	750	1,187.50	1,250.00	0%	-33%	-58%	-60%	↔	↔	↔	↔		Wheat flour	833.33	750	1,000.00	1,250.00	1,250.00	11%	-17%	-33%	-33%	↔	↔	↔	↔
Baghdad	Food Basket	26,368.75	24,512.50	25,377.50	26,030.00	27,866.75	8%	4%	1%	-5%	↔	↔	↔	↔	Nineva	Food Basket	23,915.81	22,818.50	26,316.42	23,590.63	21,788.68	5%	-9%	1%	10%	↔	↔	↔	↔
	Lentils	1,500.00	1,500.00	1,805.56	2,000.00	2,008.33	0%	-17%	-25%	-25%	↔	↔	↔	↔		Lentils	1,816.18	1,640.00	1,625.00	1,687.50	1,656.25	11%	12%	8%	10%	↔	↔	↔	↔
	Meat (beef)	15,000.00	15,000.00	13,888.89	14,300.00	13,566.67	0%	8%	5%	11%	↔	↔	↔	↔		Meat (beef)	12,294.12	12,260.00	12,625.00	12,187.50	11,421.88	0%	-3%	1%	8%	↔	↔	↔	↔
	Milk	1,500.00	1,500.00	1,666.67	1,450.00	1,750.00	0%	-10%	3%	-14%	↔	↔	↔	↔		Milk	2,066.18	2,166.67	2,214.29	1,812.50	2,405.17	-5%	-7%	14%	14%	↔	↔	↔	↔
	Oil (vegetable)	1,562.50	1,750.00	1,766.67	1,700.00	1,870.00	-11%	-12%	-8%	-16%	↔	↔	↔	↔		Oil (vegetable)	1,529.41	1,530.00	1,531.25	1,500.00	1,601.56	0%	0%	2%	-5%	↔	↔	↔	↔
	Onions	1,000.00	1,000.00	888.89	800	791.67	0%	12%	25%	26%	↔	↔	↔	↔		Onions	727.94	670	750	625	664.06	9%	-3%	16%	10%	↔	↔	↔	↔
	Rice	1,500.00	1,500.00	1,722.22	1,750.00	2,000.00	0%	-13%	-14%	-25%	↔	↔	↔	↔		Rice	1,794.12	1,720.00	2,187.50	1,656.25	1,484.38	-4%	-18%	8%	21%	↔	↔	↔	↔
	Sugar	1,000.00	1,000.00	1,000.00	1,325.00	1,250.00	0%	0%	-25%	-20%	↔	↔	↔	↔		Sugar	995.59	980	1,025.00	1,062.50	1,092.19	2%	-3%	-6%	-9%	↔	↔	↔	↔
	Wage (casual labour)	25,000.00	25,000.00	23,333.33	23,000.00	21,500.00	0%	7%	9%	16%	↔	↔	↔	↔		Wage (casual labour)	17,735.29	17,520.00	15,687.50	16,250.00	18,750.00	1%	13%	9%	-5%	↔	↔	↔	↔
	Wheat flour	1,650.00	1,350.00	1,172.22	1,150.00	1,158.33	22%	41%	43%	42%	↔	↔	↔	↔		Wheat flour	913.24	874	921.88	1,031.25	926.56	4%	-1%	-11%	-1%	↔	↔	↔	↔
Basrah	Food Basket	27,100.00	27,100.00	27,100.00	26,950.00	28,000.00	0%	0%	1%	-3%	↔	↔	↔	↔	Qadisiya	Food Basket	22,318.76	22,375.00	21,925.00	25,321.88	23,500.00	0%	2%	-12%	-5%	↔	↔	↔	↔
	Lentils	2,500.00	2,500.00	2,500.00	2,333.33	3,000.00	0%	0%	7%	-17%	↔	↔	↔	↔		Lentils	1,500.00	1,500.00	1,500.00	2,500.00	2,000.00	0%	0%	-40%	-25%	↔	↔	↔	↔
	Meat (beef)	13,000.00	13,000.00	13,000.00	13,000.00	13,000.00	0%	0%	0%	0%	↔	↔	↔	↔		Meat (beef)	12,375.00	11,250.00	11,000.00	14,000.00	13,000.00	10%	13%	-12%	-5%	↔	↔	↔	↔
	Milk	1,500.00	1,500.00	1,500.00	1,500.00	2,875.00	0%	0%	0%	-48%	↔	↔	↔	↔		Milk	1,500.00	1,500.00	1,250.00	2,000.00	2,000.00	0%	20%	-25%	-25%	↔	↔	↔	↔
	Oil (vegetable)	1,500.00	1,500.00	1,500.00	1,666.67	1,500.00	0%	0%	-10%	0%	↔	↔	↔	↔		Oil (vegetable)	1,937.50	2,000.00	1,500.00	2,250.00	2,250.00	-3%	29%	-14%	-14%	↔	↔	↔	↔
	Onions	750	750	750	583.33	1,000.00	0%	0%	29%	-25%	↔	↔	↔	↔		Onions	843.75	937.5	750	812.5	750	-10%	13%	4%	13%	↔	↔	↔	↔
	Rice	2,000.00	2,000.00	2,000.00	2,000.00	2,000.00	0%	0%	0%	0%	↔	↔	↔	↔		Rice	1,937.50	2,000.00	2,000.00	1,500.00	1,500.00	-3%	-3%	29%	29%	↔	↔	↔	↔
	Sugar	1,000.00	1,000.00	1,000.00	1,000.00	1,000.00	0%	0%	0%	0%	↔	↔	↔	↔		Sugar	1,000.00	1,000.00	1,000.00	1,500.00	1,000.00	0%	0%	-33%	0%	↔	↔	↔	↔
	Wage (casual labour)	25,000.00	25,000.00	25,000.00	25,000.00	25,000.00	0%	0%	0%	0%	↔	↔	↔	↔		Wage (casual labour)	25,000.00	25,000.00	25,000.00	31,250.00	30,000.00	0%	0%	-20%	-17%	↔	↔	↔	↔
	Wheat flour	1,000.00	1,000.00	1,000.00	1,000.00	1,000.00	0%	0%	0%	0%	↔	↔	↔	↔		Wheat flour	562.5	500	500	1,062.50	1,000.00	13%	13%	-47%	-44%	↔	↔	↔	↔
Dahuk	Food Basket	26,451.68	26,624.70	24,290.63	26,900.00	2																							

Annex 2: Market Prices by Commodity

Commodity	Governorate	Current Month	Previous Period				% Change From the Previous				Direction of Change			
			Period				Period				Period			
			1 M	3 M	6 M	1 Yr	1 M	3 M	6 M	1 Yr	1 M	3 M	6 M	1 Yr
Food Basket	Anbar	22,538.29	22,159.00	21,641.57	23,015.00	25,276.85	2%	4%	-2%	-11%	↗	↗	↗	↗
	Babil	23,134.38	22,093.75	25,187.50	26,165.63	25,187.50	5%	8%	-12%	-8%	↗	↗	↗	↗
	Baghdad	26,368.75	24,512.50	25,377.50	26,030.00	27,866.75	8%	4%	1%	-5%	↗	↗	↗	↗
	Basrah	27,100.00	27,100.00	27,100.00	26,950.00	28,000.00	0%	0%	1%	-3%	↗	↗	↗	↗
	Dahuk	26,451.68	26,624.70	24,290.63	26,900.00	25,971.88	-1%	9%	-2%	2%	↗	↗	↗	↗
	Diylala	23,117.19	23,075.00	23,745.83	23,633.93	25,447.33	0%	-3%	-2%	-9%	↗	↗	↗	↗
	Erbil	23,887.50	23,812.50	21,000.00	0	24,512.50	0%	14%	0%	-3%	↗	↗	↗	↗
	Karbala	26,421.88	26,421.88	28,362.50	28,425.00	28,425.00	0%	-7%	-7%	-7%	↗	↗	↗	↗
	Kirkuk	22,040.62	30,375.00	27,547.50	30,235.78	27,975.97	-27%	-20%	-27%	-21%	↗	↗	↗	↗
	Misan	27,100.00	27,100.00	27,100.00	26,950.00	28,000.00	0%	0%	1%	-3%	↗	↗	↗	↗
	Muthanna	23,927.50	24,737.50	26,425.00	28,112.50	28,112.50	-3%	0%	-15%	-15%	↗	↗	↗	↗
	Ninewa	23,915.81	22,818.50	26,316.42	23,590.63	21,788.68	5%	-9%	1%	10%	↗	↗	↗	↗
	Qadisiya	22,318.76	22,375.00	21,925.00	25,221.88	23,500.00	0%	2%	-12%	-5%	↗	↗	↗	↗
	Salah al-Din	24,548.56	23,430.67	23,738.52	24,588.50	25,977.56	5%	3%	0%	-6%	↗	↗	↗	↗
	Sulaymaniyah	19,643.76	20,346.88	23,981.26	21,019.38	24,230.01	-3%	-18%	-7%	-19%	↗	↗	↗	↗
	Wasit	22,825.00	22,825.00	0	0	18,912.50	0%	0%	0%	21%	↗	↗	↗	↗
Lentils	Anbar	1,473.68	1,470.00	1,531.48	1,700.00	1,731.48	0%	-4%	-13%	-15%	↗	↗	↗	↗
	Babil	1,500.00	1,687.50	2,500.00	2,500.00	2,000.00	-11%	-40%	-40%	-25%	↗	↗	↗	↗
	Baghdad	1,500.00	1,500.00	1,805.56	2,000.00	2,008.33	0%	-17%	-25%	-25%	↗	↗	↗	↗
	Basrah	2,500.00	2,500.00	2,500.00	2,333.33	3,000.00	0%	0%	7%	-17%	↗	↗	↗	↗
	Dahuk	2,222.00	2,166.50	2,437.50	2,250.00	2,437.50	3%	9%	-1%	-9%	↗	↗	↗	↗
	Diylala	1,906.25	2,000.00	1,805.56	1,857.14	1,946.43	-5%	6%	3%	-2%	↗	↗	↗	↗
	Erbil	1,791.67	1,750.00	1,500.00	0	2,000.00	2%	19%	0%	-10%	↗	↗	↗	↗
	Karbala	2,000.00	2,000.00	2,000.00	2,000.00	2,000.00	0%	0%	0%	0%	↗	↗	↗	↗
	Kirkuk	1,656.25	1,777.78	1,527.78	1,390.63	2,197.67	-7%	8%	19%	-25%	↗	↗	↗	↗
	Misan	2,500.00	2,500.00	2,500.00	2,333.33	3,000.00	0%	0%	7%	-17%	↗	↗	↗	↗
	Muthanna	1,716.67	2,250.00	2,250.00	2,000.00	2,000.00	-24%	-24%	-14%	-14%	↗	↗	↗	↗
	Ninewa	1,816.18	1,640.00	1,625.00	1,687.50	1,656.25	11%	12%	8%	10%	↗	↗	↗	↗
	Qadisiya	1,500.00	1,500.00	1,500.00	2,500.00	2,000.00	0%	0%	-40%	-25%	↗	↗	↗	↗
	Salah al-Din	1,769.23	1,766.67	1,544.12	1,875.00	1,914.47	0%	15%	-6%	-8%	↗	↗	↗	↗
	Sulaymaniyah	1,718.75	1,750.00	2,000.00	1,675.00	2,750.00	-2%	-14%	3%	-38%	↗	↗	↗	↗
	Wasit	2,000.00	2,000.00	0	0	2,500.00	0%	0%	0%	-20%	↗	↗	↗	↗
Meat (beef)	Anbar	10,315.79	10,640.00	11,425.93	11,200.00	10,592.59	-3%	-10%	-8%	-3%	↗	↗	↗	↗
	Babil	13,500.00	12,500.00	10,000.00	13,000.00	13,000.00	8%	35%	4%	4%	↗	↗	↗	↗
	Baghdad	15,000.00	15,000.00	13,888.89	14,300.00	13,566.67	0%	8%	5%	11%	↗	↗	↗	↗
	Basrah	13,000.00	13,000.00	13,000.00	13,000.00	13,000.00	0%	0%	0%	0%	↗	↗	↗	↗
	Dahuk	14,333.33	15,000.00	14,500.00	13,750.00	14,500.00	-4%	-1%	4%	-1%	↗	↗	↗	↗
	Diylala	13,750.00	13,500.00	13,222.22	13,750.00	13,178.57	2%	4%	-2%	4%	↗	↗	↗	↗
	Erbil	14,000.00	14,000.00	15,000.00	0	15,000.00	0%	-7%	0%	-7%	↗	↗	↗	↗
	Karbala	16,000.00	16,000.00	16,000.00	16,000.00	16,000.00	0%	0%	0%	0%	↗	↗	↗	↗
	Kirkuk	12,812.50	11,222.22	12,100.00	14,222.22	13,454.55	14%	6%	-10%	-5%	↗	↗	↗	↗
	Misan	13,000.00	13,000.00	13,000.00	13,000.00	14,000.00	0%	0%	0%	-7%	↗	↗	↗	↗
	Muthanna	12,500.00	12,500.00	12,000.00	7,500.00	7,500.00	0%	4%	67%	67%	↗	↗	↗	↗
	Ninewa	12,294.12	12,260.00	12,625.00	12,187.50	11,421.88	0%	-3%	1%	8%	↗	↗	↗	↗
	Qadisiya	12,375.00	11,250.00	11,000.00	14,000.00	13,000.00	10%	13%	-12%	-5%	↗	↗	↗	↗
	Salah al-Din	12,730.77	12,933.33	12,882.35	12,900.00	12,368.42	-2%	-1%	-1%	3%	↗	↗	↗	↗
	Sulaymaniyah	15,000.00	15,000.00	16,000.00	15,750.00	14,750.00	0%	-6%	-5%	2%	↗	↗	↗	↗
	Wasit	10,500.00	10,500.00	0	0	12,000.00	0%	0%	0%	-13%	↗	↗	↗	↗
Milk	Anbar	2,039.47	2,030.00	1,861.11	1,800.00	2,092.59	0%	10%	13%	-3%	↗	↗	↗	↗
	Babil	1,437.50	1,375.00	1,000.00	2,000.00	2,000.00	5%	44%	-28%	-28%	↗	↗	↗	↗
	Baghdad	1,500.00	1,500.00	1,666.67	1,450.00	1,750.00	0%	-10%	3%	-14%	↗	↗	↗	↗
	Basrah	1,500.00	1,500.00	1,500.00	1,500.00	2,875.00	0%	0%	0%	-48%	↗	↗	↗	↗
	Dahuk	4,166.67	9,500.00	1,500.00	1,500.00	1,500.00	-56%	178%	178%	178%	↗	↗	↗	↗
	Diylala	2,000.00	2,000.00	1,583.33	1,928.57	1,642.86	0%	26%	4%	22%	↗	↗	↗	↗
	Erbil	1,750.00	1,750.00	1,750.00	0	2,000.00	0%	0%	0%	-13%	↗	↗	↗	↗
	Karbala	2,000.00	2,000.00	2,000.00	2,000.00	2,000.00	0%	0%	0%	0%	↗	↗	↗	↗
	Kirkuk	1,718.75	2,800.00	4,250.00	3,357.14	1,687.50	-39%	-60%	-49%	2%	↗	↗	↗	↗
	Misan	1,500.00	1,500.00	1,500.00	1,500.00	2,875.00	0%	0%	0%	-48%	↗	↗	↗	↗
	Muthanna	1,250.00	1,250.00	1,000.00	1,500.00	1,500.00	0%	25%	-17%	-17%	↗	↗	↗	↗
	Ninewa	2,066.18	2,166.67	2,214.29	1,812.50	2,405.17	-5%	-7%	14%	-14%	↗	↗	↗	↗
	Qadisiya	1,500.00	1,500.00	1,250.00	2,000.00	2,000.00	0%	20%	-25%	-25%	↗	↗	↗	↗
	Salah al-Din	1,471.15	1,366.67	1,529.41	1,575.00	1,512.16	8%	-4%	-7%	-3%	↗	↗	↗	↗
	Sulaymaniyah	1,500.00	1,500.00	1,500.00	1,962.50	2,000.00	0%	0%	-24%	-25%	↗	↗	↗	↗
	Wasit	1,281.25	1,250.00	0	0	5,000.00	0%	0%	0%	-74%	↗	↗	↗	↗
Oil (vegetable)	Anbar	1,651.32	1,600.00	1,620.37	1,750.00	1,925.93	3%	2%	-6%	-14%	↗	↗	↗	↗
	Babil	1,437.50	1,312.50	1,250.00	2,250.00	2,250.00	10%	15%	-36%	-36%	↗	↗	↗	↗
	Baghdad	1,562.50	1,750.00	1,766.67	1,750.00	1,870.00	-11%	-12%	-9%	-16%	↗	↗	↗	↗
	Basrah	1,500.00	1,500.00	1,500.00	1,666.67	1,500.00	0%	0%	-10%	0%	↗	↗	↗	↗
	Dahuk	1,416.67	1,500.00	1,437.50	1,500.00	1,500.00	-6%	-1%	-6%	-6%	↗	↗	↗	↗
	Diylala	1,500.00	1,500.00	1,666.67	1,642.86	1,946.43	0%	-10%	-9%	-23%	↗	↗	↗	↗
	Erbil	1,500.00	1,500.00	1,500.00	0	1,500.00	0%	0%	0%	0%	↗	↗	↗	↗
	Karbala	1,750.00	1,750.00	1,750.00	1,750.00	1,750.00	0%	0%	0%	0%	↗	↗	↗	↗
	Kirkuk	1,515.63	1,722.22	4,025.00	4,583.33	3,159.09	-12%	-62%	-67%	-52%	↗	↗	↗	↗
	Misan	1,500.00	1,500.00	1,500.00	1,666.67	1,500.00	0%	0%	-10%	0%	↗	↗	↗	↗
	Muthanna	1,416.67	1,250.00	1,250.00	1,750.00	1,750.00	13%	13%	-19%	-19%	↗	↗	↗	↗
	Ninewa	1,529.41	1,530.00	1,531.25	1,500.00	1,601.56	0%	0%	2%	-5%	↗	↗	↗	↗
	Qadisiya	1,937.50	2,000.00	1,500.00	2,250.00	2,250.00	3%	29%	-14%	-14%	↗	↗	↗	↗
	Salah al-Din	1,692.31	1,510.00	1,585.29	1,640.00	1,868.42	-12%	7%	3%	-9%	↗	↗	↗	↗
	Sulaymaniyah	1,500.00	1,500.00	1,500.00	1,500.00	1,700.00	0%	0%	-3%	-12%	↗	↗	↗	↗
	Wasit	1,500.00	1,500.00	0	0	1,500.00	0%	0%	0%	0%	↗	↗	↗	↗

Commodity	Governorate	Current Month	Previous Period				% Change From the Previous				Direction of Change			
			1 M	3 M	6 M	1 Yr	1 M	3 M	6 M	1 Yr	1 M (+/- 5%)	3 M (+/-10%)	6 M (+/-10%)	1 Yr (+/-10%)
Onions	Anbar	743.42	754	824.07	650	787.04	-1%	-10%	14%	-6%	⬆️	⬆️	⬆️	⬆️
	Babil	750	750	750	1,000.00	750	0%	0%	-25%	0%	⬆️	⬆️	⬆️	⬆️
	Baghdad	1,000.00	1,000.00	888.89	800	791.67	0%	12%	25%	26%	⬆️	⬆️	⬆️	⬆️
	Basrah	750	750	750	583.33	1,000.00	0%	0%	29%	-25%	⬆️	⬆️	⬆️	⬆️
	Dahuk	750	750	812.5	750	750	0%	-8%	0%	0%	⬆️	⬆️	⬆️	⬆️
	Diyala	968.75	1,000.00	833.33	642.86	696.43	-3%	16%	51%	39%	⬆️	⬆️	⬆️	⬆️
	Erbil	1,000.00	1,000.00	1,000.00	0	750	0%	0%	0%	33%	⬆️	⬆️	⬆️	⬆️
	Kerbala	1,000.00	1,000.00	1,000.00	1,000.00	1,000.00	0%	0%	0%	0%	⬆️	⬆️	⬆️	⬆️
	Kirkuk	598.88	898	1,033.20	2,305.44	1,503.75	-33%	-42%	-74%	-60%	⬆️	⬆️	⬆️	⬆️
	Misan	750	750	750	583.33	1,000.00	0%	0%	29%	-25%	⬆️	⬆️	⬆️	⬆️
	Muthanna	750	750	500	500	750	0%	50%	50%	0%	⬆️	⬆️	⬆️	⬆️
	Ninewa	727.94	670	750	625	664.06	9%	-3%	16%	10%	⬆️	⬆️	⬆️	⬆️
	Qadisiya	843.75	937.5	750	812.5	750	-10%	13%	4%	13%	⬆️	⬆️	⬆️	⬆️
	Salah al-Din	736.54	693.33	720.59	625	611.84	6%	2%	18%	20%	⬆️	⬆️	⬆️	⬆️
	Sulaymaniyah	968.75	1,000.00	1,000.00	550	750	-3%	-3%	76%	29%	⬆️	⬆️	⬆️	⬆️
Wasit	750	750	0	0	875	0%	0%	0%	-14%	⬆️	⬆️	⬆️	⬆️	
Rice	Anbar	1,855.26	1,750.00	1,705.93	1,650.00	1,750.00	6%	9%	12%	6%	⬆️	⬆️	⬆️	⬆️
	Babil	2,187.50	2,000.00	2,000.00	1,500.00	1,500.00	9%	9%	46%	46%	⬆️	⬆️	⬆️	⬆️
	Baghdad	1,500.00	1,500.00	1,722.22	1,750.00	2,000.00	0%	-13%	-14%	-25%	⬆️	⬆️	⬆️	⬆️
	Basrah	2,000.00	2,000.00	2,000.00	2,000.00	2,000.00	0%	0%	0%	0%	⬆️	⬆️	⬆️	⬆️
	Dahuk	2,000.00	2,000.00	1,625.00	2,000.00	1,812.50	0%	23%	0%	10%	⬆️	⬆️	⬆️	⬆️
	Diyala	1,500.00	1,500.00	1,666.67	1,607.14	1,803.57	0%	-10%	-7%	-17%	⬆️	⬆️	⬆️	⬆️
	Erbil	2,000.00	2,000.00	1,750.00	0	2,000.00	0%	14%	0%	0%	⬆️	⬆️	⬆️	⬆️
	Kerbala	1,750.00	1,750.00	2,000.00	2,000.00	2,000.00	0%	-13%	-13%	-13%	⬆️	⬆️	⬆️	⬆️
	Kirkuk	1,203.13	1,272.22	1,333.33	1,562.50	1,643.75	-30%	-10%	-23%	-27%	⬆️	⬆️	⬆️	⬆️
	Misan	2,000.00	2,000.00	2,000.00	2,000.00	2,000.00	0%	0%	0%	0%	⬆️	⬆️	⬆️	⬆️
	Muthanna	1,916.67	2,000.00	2,000.00	2,000.00	2,000.00	-4%	-4%	-4%	-4%	⬆️	⬆️	⬆️	⬆️
	Ninewa	1,794.12	1,720.00	2,187.50	1,656.25	1,484.38	4%	-18%	8%	21%	⬆️	⬆️	⬆️	⬆️
	Qadisiya	1,937.50	2,000.00	2,000.00	1,500.00	1,500.00	-3%	-3%	29%	29%	⬆️	⬆️	⬆️	⬆️
	Salah al-Din	1,826.92	1,710.00	1,691.18	1,775.00	1,855.26	7%	8%	3%	-2%	⬆️	⬆️	⬆️	⬆️
	Sulaymaniyah	1,387.50	1,462.50	1,687.50	1,575.00	1,687.50	-5%	-18%	-12%	-18%	⬆️	⬆️	⬆️	⬆️
Wasit	2,000.00	2,000.00	0	0	1,000.00	0%	0%	0%	100%	⬆️	⬆️	⬆️	⬆️	
Sugar	Anbar	1,052.63	1,036.00	1,074.07	1,100.00	1,351.85	2%	-2%	-4%	-22%	⬆️	⬆️	⬆️	⬆️
	Babil	1,000.00	1,000.00	1,000.00	1,500.00	1,000.00	0%	0%	-33%	0%	⬆️	⬆️	⬆️	⬆️
	Baghdad	1,000.00	1,000.00	1,000.00	1,325.00	1,250.00	0%	0%	-25%	-20%	⬆️	⬆️	⬆️	⬆️
	Basrah	1,000.00	1,000.00	1,000.00	1,000.00	1,000.00	0%	0%	0%	0%	⬆️	⬆️	⬆️	⬆️
	Dahuk	1,208.33	1,125.00	1,312.50	1,250.00	1,250.00	7%	-8%	-3%	-3%	⬆️	⬆️	⬆️	⬆️
	Diyala	1,250.00	1,250.00	1,183.33	1,214.29	1,267.86	0%	6%	3%	-1%	⬆️	⬆️	⬆️	⬆️
	Erbil	750	750	750	0	1,000.00	0%	0%	-25%	0%	⬆️	⬆️	⬆️	⬆️
	Kerbala	1,250.00	1,250.00	1,250.00	1,312.50	1,312.50	0%	0%	-5%	-5%	⬆️	⬆️	⬆️	⬆️
	Kirkuk	1,031.25	2,000.00	4,750.00	5,888.89	3,036.36	-48%	-78%	-82%	-66%	⬆️	⬆️	⬆️	⬆️
	Misan	1,000.00	1,000.00	1,000.00	1,000.00	1,000.00	0%	0%	0%	0%	⬆️	⬆️	⬆️	⬆️
	Muthanna	1,000.00	1,000.00	1,000.00	1,000.00	1,000.00	0%	0%	0%	0%	⬆️	⬆️	⬆️	⬆️
	Ninewa	995.59	980	1,025.00	1,062.50	1,092.19	2%	-3%	-6%	-9%	⬆️	⬆️	⬆️	⬆️
	Qadisiya	1,000.00	1,000.00	1,000.00	1,500.00	1,000.00	0%	0%	-33%	0%	⬆️	⬆️	⬆️	⬆️
	Salah al-Din	1,057.69	1,116.67	1,029.41	1,175.00	1,177.63	-5%	3%	-10%	-10%	⬆️	⬆️	⬆️	⬆️
	Sulaymaniyah	1,193.75	1,250.00	1,312.50	1,000.00	1,212.50	-5%	-9%	19%	-2%	⬆️	⬆️	⬆️	⬆️
Wasit	1,000.00	1,000.00	0	0	1,250.00	0%	0%	0%	-20%	⬆️	⬆️	⬆️	⬆️	
Wage (casual labour)	Anbar	20,142.86	20,600.00	21,666.67	19,000.00	18,888.89	-2%	-7%	6%	7%	⬆️	⬆️	⬆️	⬆️
	Babil	18,750.00	16,250.00	10,000.00	30,000.00	30,000.00	15%	88%	-38%	-38%	⬆️	⬆️	⬆️	⬆️
	Baghdad	25,000.00	25,000.00	23,333.33	23,000.00	21,000.00	0%	7%	9%	16%	⬆️	⬆️	⬆️	⬆️
	Basrah	25,000.00	25,000.00	25,000.00	25,000.00	25,000.00	0%	0%	0%	0%	⬆️	⬆️	⬆️	⬆️
	Dahuk	25,000.00	25,000.00	25,000.00	25,000.00	25,000.00	0%	0%	0%	0%	⬆️	⬆️	⬆️	⬆️
	Diyala	18,125.00	16,250.00	16,666.67	17,857.14	19,857.14	12%	9%	2%	-9%	⬆️	⬆️	⬆️	⬆️
	Erbil	12,500.00	15,000.00	20,000.00	0	15,000.00	-17%	-38%	-17%	-17%	⬆️	⬆️	⬆️	⬆️
	Kerbala	25,000.00	25,000.00	25,000.00	20,000.00	20,000.00	0%	25%	25%	0%	⬆️	⬆️	⬆️	⬆️
	Kirkuk	18,333.33	17,500.00	20,000.00	22,500.00	21,341.46	5%	-8%	-19%	-14%	⬆️	⬆️	⬆️	⬆️
	Misan	25,000.00	25,000.00	25,000.00	25,000.00	25,000.00	0%	0%	0%	0%	⬆️	⬆️	⬆️	⬆️
	Muthanna	15,000.00	15,000.00	10,000.00	25,000.00	25,000.00	0%	50%	-40%	-40%	⬆️	⬆️	⬆️	⬆️
	Ninewa	17,735.29	17,520.00	15,687.50	16,250.00	18,750.00	1%	13%	9%	-5%	⬆️	⬆️	⬆️	⬆️
	Qadisiya	25,000.00	25,000.00	25,000.00	31,250.00	30,000.00	0%	0%	-20%	-17%	⬆️	⬆️	⬆️	⬆️
	Salah al-Din	16,346.15	14,200.00	17,647.06	19,500.00	18,676.47	15%	-7%	-16%	-12%	⬆️	⬆️	⬆️	⬆️
	Sulaymaniyah	17,250.00	16,000.00	20,000.00	25,000.00	25,000.00	8%	-14%	-31%	-31%	⬆️	⬆️	⬆️	⬆️
Wasit	17,500.00	17,500.00	0	0	20,000.00	0%	0%	0%	-13%	⬆️	⬆️	⬆️	⬆️	
Wheat flour	Anbar	713.16	774	716.67	910	1,075.93	-8%	0%	-22%	-34%	⬆️	⬆️	⬆️	⬆️
	Babil	500	500	750	1,187.50	1,250.00	0%	-33%	-58%	-60%	⬆️	⬆️	⬆️	⬆️
	Baghdad	1,650.00	1,350.00	1,172.22	1,150.00	1,158.33	22%	41%	43%	42%	⬆️	⬆️	⬆️	⬆️
	Basrah	1,000.00	1,000.00	1,000.00	1,000.00	1,000.00	0%	0%	0%	0%	⬆️	⬆️	⬆️	⬆️
	Dahuk	958.33	1,000.00	937.5	1,000.00	1,000.00	-4%	2%	4%	4%	⬆️	⬆️	⬆️	⬆️
	Diyala	1,031.25	1,000.00	972.22	1,000.00	1,000.00	3%	6%	3%	3%	⬆️	⬆️	⬆️	⬆️
	Erbil	750	750	650	0	750	0%	15%	0%	0%	⬆️	⬆️	⬆️	⬆️
	Kerbala	1,212.50	1,212.50	1,250.00	1,250.00	1,250.00	0%	-3%	-3%	-3%	⬆️	⬆️	⬆️	⬆️
	Kirkuk	1,265.63	1,777.78	1,100.00	1,062.50	1,043.75	-29%	15%	19%	21%	⬆️	⬆️	⬆️	⬆️
	Misan	1,000.00	1,000.00	1,000.00	1,000.00	1,000.00	0%	0%	0%	0%	⬆️	⬆️	⬆️	⬆️
	Muthanna	833.33	750	1,000.00	1,250.00	1,250.00	11%	-17%	-33%	-33%	⬆️	⬆️	⬆️	⬆️
	Ninewa	913.24	874	921.88	1,031.25	926.56	4%	-1%	-11%	-1%	⬆️	⬆️	⬆️	⬆️
	Qadisiya	562.5	500	500	1,062.50	1,000.00	13%	13%	-47%	-44%	⬆️	⬆️	⬆️	⬆️
	Salah al-Din	955.77	923.33	1,050.00	975	1,059.21	4%	-9%	-2%	-10%	⬆️	⬆️	⬆️	⬆️
	Sulaymaniyah	687.5	700	937.5	737.5	762.5	-2%	-27%	-7%	-10%	⬆️	⬆️	⬆️	⬆️
Wasit	500	500	0	0	750	0%	0%	0%	-33%	⬆️	⬆️	⬆️	⬆️	