

Highlights:

o Food prices continued to fall in December for all WFP monitored markets in Syria. Hard-to-reach and besieged areas however, continued to report higher food prices than accessible areas.

o Deir-ez-Zor and Ar-Raqqa have experienced considerable decreases in food prices over the past four months. Nevertheless, the price of a food basket remains higher than other governorates. Hereby, confirming that food access remains difficult in these governorates.

o Food prices in besieged Eastern Ghouta have fallen slightly due to trade to the area restarting in end-November. Nevertheless, prices remain extremely high compared to national averages. For example the price of a food basket in besieged Eastern Ghouta was 4.8 times the national average in December.

o Syria's December inflation rate was estimated at 43.2 percent by Syria's Central Bureau of Statistics. Down from 47 percent in November 2017.

For further information please contact :

Jan Michiels : Jan.Michiels@wfp.org

Dima Alhumsi : Dima.Alhumsi@wfp.org

A: Standard Food Basket



In December 2017, the national average cost of a standard food basket¹ (group of essential food commodities) was SYP 28,415. Decreasing by five percent m-o-m (month-on-month), 14 percent compared to June 2017 and 26 percent y-o-y (year-on-year). Further consolidating the impression that food markets are recovering across the country. There have been noticeable improvements in 2017 in terms of more ample supply of goods across the country, improved supply networks/routes particularly in connecting food production areas such as Al-Hasakeh with the rest of Syria and a better harvest in 2017 compared to 2016.

The governorate with the highest average food basket price was Deir-ez-Zor at SYP 42,450. While the lowest average food basket price was recorded in Al-Hasakeh at SYP 24,550.

Food basket prices decreased in 13 out of Syria's 14 governorates in December. The decrease was led by falling prices of all food basket commodities (oil, rice, lentils and sugar).

The largest drop in food basket prices in December compared to November was in Ar-Raqqa (-17%), Tartous (-11%), Idlib (-6%) and Deir-ez-Zor (-5%). The decrease in average food basket prices in December has largely been attributed to improved supply routes and supply sources. Ar-Raqqa's reduction was related to increased market functionality as people start returning.

Chart 1: Min. vs. Max. National Average Cost of Food Basket (in SYP)

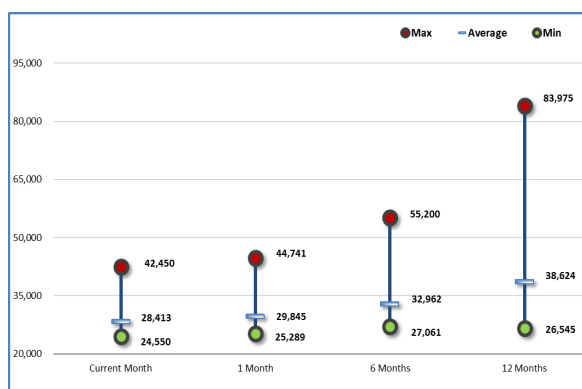
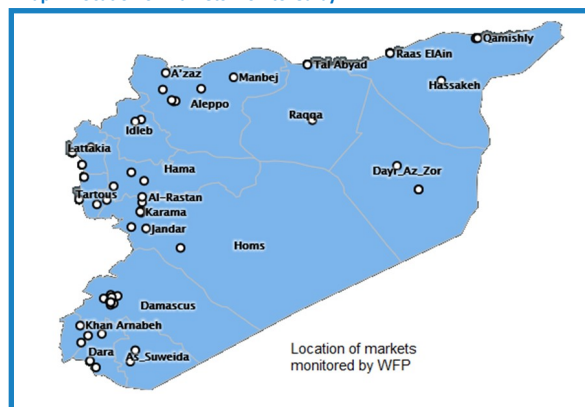


Figure 1: Food Basket Cost and Changes (in SYP)

Governorate	Price December 2017	Price 1 month change	Price 6 months changes	Price 12 months changes
Aleppo	SYP 29,090	-4%	-2%	-60%
Damascus	SYP 27,080	2%	-9%	-12%
Dar'a	SYP 25,865	-1%	-6%	-3%
Deir-ez-Zor	SYP 42,450	-5%	-23%	-49%
Hama	SYP 27,700	1%	-13%	-15%
Al-Hasakeh	SYP 24,550	-3%	-9%	-34%
Homs	SYP 27,970	0%	-6%	-4%
Lattakia	SYP 24,640	-4%	-19%	-22%
Ar-Raqqa	SYP 33,495	-17%	-22%	-9%
Rural Damascus*	SYP 26,395	-3%	-10%	-23%
As-Sweida	SYP 26,540	2%	-19%	-17%
Tartous	SYP 25,000	-11%	-20%	-18%
Quneitra	SYP 27,365	-3%	4%	-4%
Idlib	SYP 29,665	-6%	-17%	-13%
Average	SYP 28,415	-5%	-14%	-26%

Map 1: Location of markets monitored by WFP



1.The cost of a standard basket of dry goods providing 1,930 kcal a day for a family of five during a month. The basket includes 37 kg of bread, 19 kg rice, 19 kg lentils, 5 kg of sugar, and 7 kg of vegetable oil.

*Rural Damascus Food Basket data does not include Eastern Ghouta prices

B: Eastern Ghouta

In December 2017 Eastern Ghouta, a suburb 15 kms east of Damascus city, continued experiencing aerial bombing on the area as fighting continued between the conflict parties. The area remains besieged with the only access into and out of the area heavily monitored by government forces. The siege was slightly eased in late November when a trader was given sole permission by Syrian authorities to trade goods into the area where nearly 400,000 people reside. This was the first time commercial goods were allowed into the besieged area in nearly three months. Even though the slight easing of the siege reduced food prices, these remain well above the national average. High food prices are expected to continue into 2018 as all traded items inside Eastern Ghouta have a SYP 2,000/kg (USD 4.8/kg) levy. Four United Nations Inter-Agency convoys providing life-saving food aid to the besieged area were proposed to the Syrian Government in December, none were allowed access. Food supplies remain low in the besieged area.

1– Food basket prices

The average Eastern Ghouta food basket price (186,025 SYP/basket) fell by 31 percent in December compared with November prices. The December food basket price however was still 5.6 times the national average food basket price and 5.9 times the average price of a food basket in Damascus, just 15kms from the besieged area (Chart 2).

2– Bread prices :

The price of a bundle of bread (1.5kgs) was 1,670 SYP in Eastern Ghouta in December, down nine percent compared to November. This was still 21.9 times the national average price for a bundle of bread (76 SYP) and 32.4 times the price of a bundle of bread in Damascus (50 SYP) in December.

3– Vegetable prices:

The price of fresh tomatoes, a proxy for fresh vegetables, in Eastern Ghouta decreased by 12.5 percent between November and December 2017. The price however is 1.8 times higher than the December average price of 1kg of tomatoes in Damascus and 1.9 times higher than the national average price of tomatoes for December.

4– Falling energy prices:

Price of diesel and butane gas are also much higher in besieged Eastern Ghouta than elsewhere in Syria. The price of diesel in Eastern Ghouta averaged 3,760 SYP/litre in December, 8.7 times higher than the national average and 10.1 times higher than average diesel prices in Damascus.

A 25k cylinder of butane gas averaged 118,000 SYP/25k in December 2017 in besieged Eastern Ghouta, 29.3 times higher than the national average for the month and 41.1 times higher than average prices in Damascus, 15kms from Eastern Ghouta.

Chart 2: Eastern Ghouta food basket price compared to Damascus and the national average

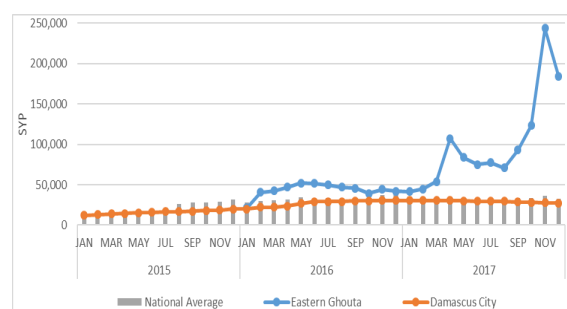


Chart 3: Comparing SYP/1.5kg bundle of bread price in Eastern Ghouta, Damascus and the national average

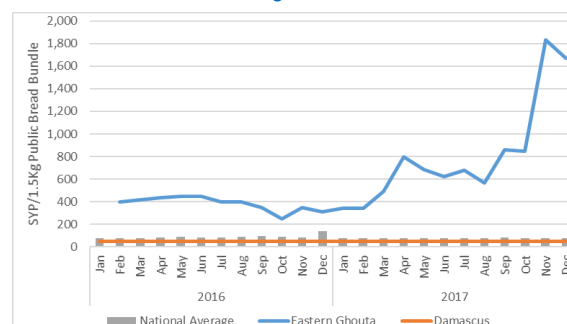


Chart 4: Retail price of 1kg of tomatoes Eastern Ghouta compared to Damascus and national average

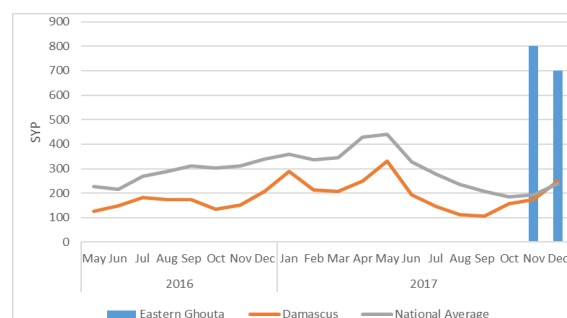


Chart 5: Diesel price in Eastern Ghouta compared to Damascus and the national average

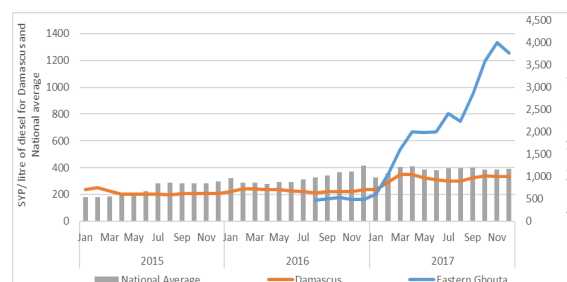
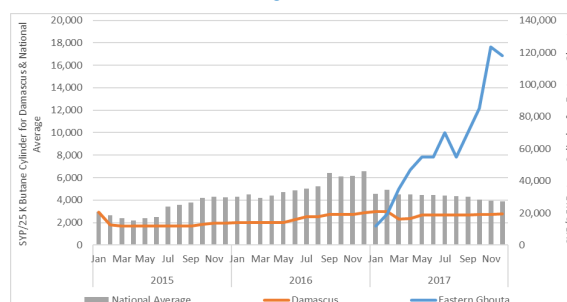


Chart 6: Butane cylinder (25K) price in Eastern Ghouta compared to Damascus and the national average



D: Retail Prices

1—Wheat flour, rice and bulgur:

One kg of wheat flour on average across Syria sold at SYP 321, rice sold at SYP 580/kg and bulgur sold at SYP 360/kg in December 2017. All three commodities showed decreases in their price compared to November 2017 prices; eight percent for rice and bulgur and 13 percent for wheat flour. In all cases the decrease in price was related to difficult to reach areas seeing price levels fall while prices increased by one percent in accessible markets for both wheat flour and rice while bulgur prices remained unchanged. The largest fall in price was recorded in besieged Eastern Ghouta which saw the wheat flour price fall by 33 percent, rice fell by 26 percent and bulgur fell by 25 percent. Hard-to-reach areas saw less dramatic falls in prices of staples: wheat flour price fell by five percent, rice fell by eight percent and bulgur fell by 6 percent (Charts 7, 8 and 9).

With the inclusion of Eastern Ghouta prices into the food price dataset, Eastern Ghouta was the area with the highest food prices across Syria for wheat flour SYP 2,700/kg, rice SYP 2,900/kg, bulgur SYP 2,490/kg, vegetable oil SYP 3,180/litre, tomatoes SYP 700/kg and sugar SYP 4,395/kg. The lowest prices by governorate were reported from Quneitra for wheat flour SYP 180/kg, bulgur SYP 220/kg, tomatoes SYP 78/kg, Idlib for vegetable oil SYP 525/litre and As-Sweida for rice SYP 313/kg and sugar SYP 250/kg.

2 – Bread:

In December 2017, the average nominal retail prices for public (government subsidized) bread and commercial (privately produced) bread were SYP 125/bundle and SYP 182/bundle, respectively. The price of public bread decreased by five percent m-o-m. Commercial bread price decreases by two percent m-o-m.

Nine governorates reported a public bread level of 50 SYP/bundle (1.5kg), the lowest price in Syria. The highest price for public bread was reported at 250 SYP/bundle in Idlib. Eastern Ghouta reported the highest price of commercial bread in Syria with a price of SYP 1,670/bundle (11.9 times higher than the national average). Tartous continued to record the lowest price for commercial bread at SYP 63/bundle.

Bread prices varied by the area's level of accessibility. Public bread prices were as follows: 53 SYP/bundle in accessible areas and 100 in hard-to-reach areas. Representing a three percent price increase y-o-y for accessible areas and a five percent decrease y-o-y in hard-to-reach areas.

Commercial bread prices were as follows: 113 SYP/bundle in accessible areas, 159 SYP/bundle in hard-to-reach areas and 1,670 SYP/bundle in besieged Eastern Ghouta. Representing an 11 percent decrease y-o-y for accessible areas, a six percent increase y-o-y for hard-to-reach areas and a 439 percent increase y-o-y for besieged Eastern Ghouta.

Chart 7: Wheat Flour Retail Price in SYP

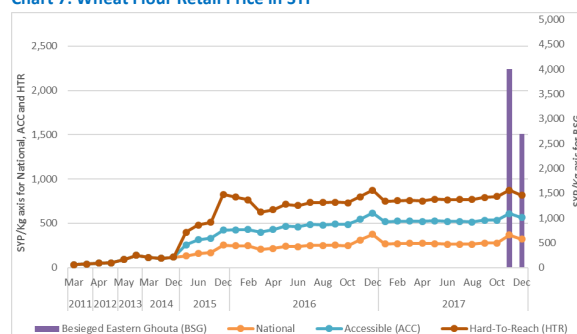


Chart 8: Retail Prices of Rice in SYP

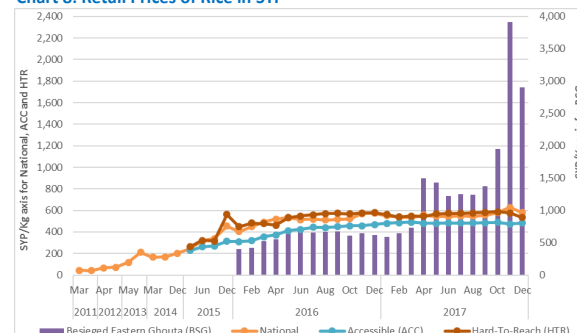


Chart 9: Retail Prices of Bulgur in SYP

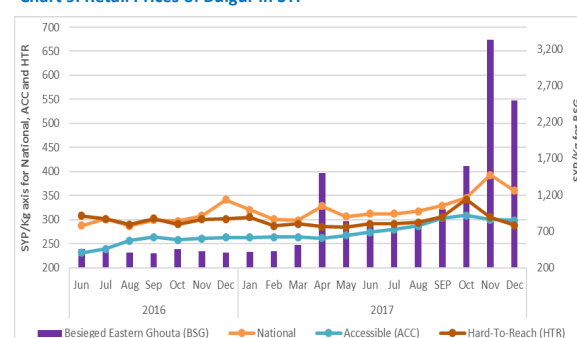


Chart 10: Retail Prices of Public Bread in ACC, HTR and BSG Markets in SYP

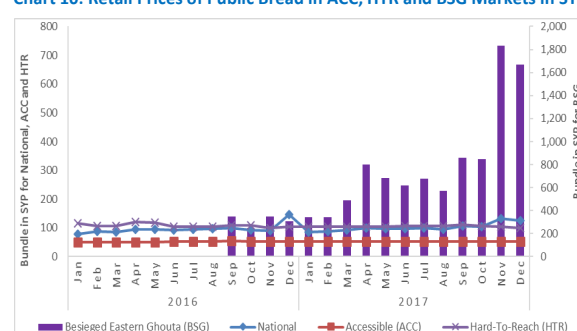
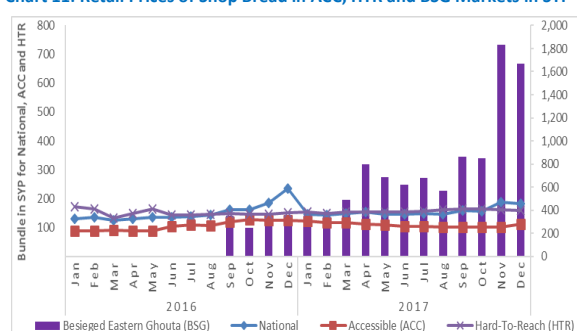


Chart 11: Retail Prices of Shop Bread in ACC, HTR and BSG Markets in SYP



Source: WFP Field Offices

3—Diesel and cylinder of butane gas

Diesel's retail price averaged SYP 389/litre, increasing by one percent compared to November 2017. The price varied widely across Syria with accessible areas averaging 310 SYP/litre of diesel and hard-to-reach areas averaged 257 SYP/litre. The price of diesel in Eastern Ghouta averaged 3,760 SYP/litre in December, 8.7 times higher than the national average (Chart 12). The highest price of diesel was in Eastern Ghouta while the lowest price was in Al-Hasakeh (119 SYP/litre).

A 25k cylinder of butane gas averaged SYP 7,352 nationally, falling by three percent compared to November 2017, up 23 percent compared to June 2017 and up 9 percent y-o-y. Similar to diesel, the price of a 25k cylinder of butane gas also varied widely across Syria. Accessible areas averaged 3,209 SYP/25k and hard-to-reach areas averaged 4,580 SYP/25k, while besieged Eastern Ghouta averaged 118,000 SYP/25k. The price of a 25k butane gas cylinder in Eastern Ghouta was 285 times higher than the national average for the month (Chart 13). The highest price of a 25k butane gas cylinder was in Eastern Ghouta while the lowest price was in Al-Hasakeh (2,250 SYP/25kg).

E. Wholesale prices of cereal in Damascus market

During December, the average nominal wholesale price of cereal was SYP 6,350/25kg for wheat grain, SYP 6,000/25kg for bulgur and SYP 11,250/25kg for rice. The overall wholesale prices decreased by two percent for wheat grain and by four percent for rice while increasing by two percent for bulgur compared to November 2017 prices.

Comparing December 2017 to December 2016 prices, all wholesale prices have fallen in price. Wheat fell by 22 percent, while bulgur and rice prices both fell by 17 percent.

F. Food supply to markets

During the month of December, supply routes to northern areas relatively improved especially in Deir-ez-Zor and Ar-Raqqa. However, landmines and unexploded ordnance on the routes that link Ar-Raqqa city to surrounding neighborhoods remain a major constraint for commercial flow.

On the other hand, monitored markets in accessible areas of Tartous, As-Sweida, Homs, Aleppo and Damascus were open and commodities were available. However, market functionality in rural mountain areas of Tartous, Lattakia and Rural Damascus were negatively impacted by weather conditions that disrupted supply routes such as Bludan and An Nabk (in Rural Damascus) and Mashta Elhiu (in rural Tartous). In addition, the higher cost of fuel during this season added an extra cost on goods transportation to these areas.

It is worth to mention that market monitoring data indicated improved supply of sugar during December across the majority of monitored markets.

Chart 12: Retail Prices of Diesel in SYP

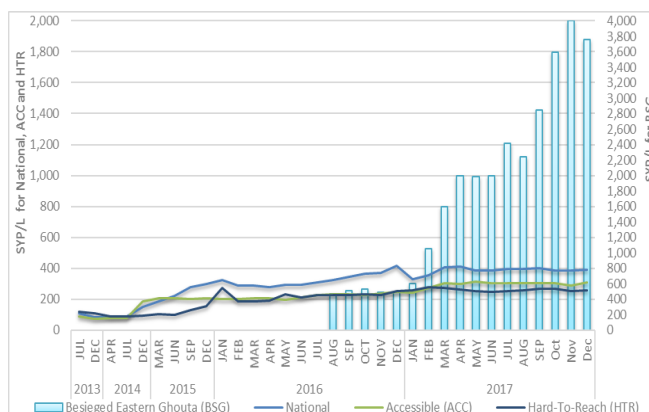


Chart 13: Retail Prices of Butane Cylinder in SYP

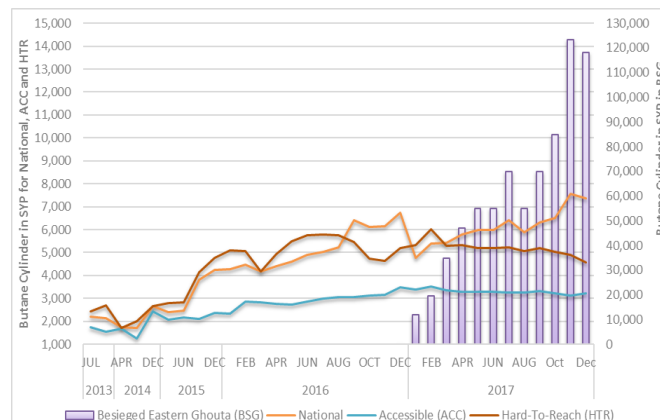
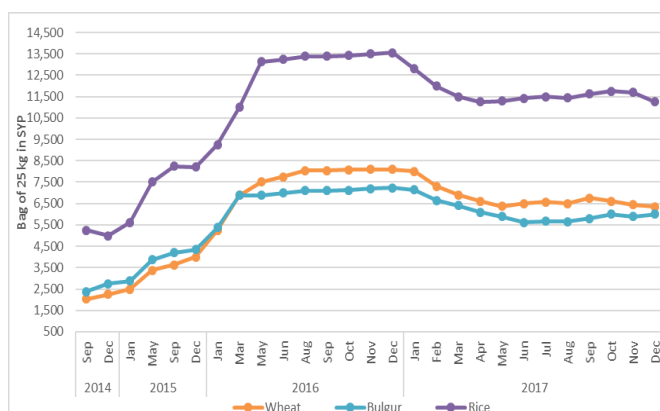


Chart 14: Wholesale Prices for Wheat, Bulgur and Rice in SYP



Source: WFP Field Offices

G. Terms of Trade (TOT):²

TOT between wage labour and wheat flour

The national average daily wage rate for non-skilled workers in December 2017 was SYP 1,838. Up by one percent compared to the previous month and up by 13 percent since May 2017. Confirming the continued upward trend of unskilled wage rates across Syria over the past 12 months. The purchasing power trend (measured by terms of trade) of casual labourers nevertheless remains weak across all monitored markets.

In December, the national average daily wage of an unskilled labourer could purchase 5.7kg of wheat flour on the market. Representing a 16 percent increase compared to November 2017. Results however varied by an area's accessibility status. With accessible markets showing that 8.5kg of wheat flour could be bought compared to 6.6kg of wheat flour in hard-to-reach areas and 0.4kg of wheat flour for besieged Eastern Ghouta. Chart 15 clearly illustrates the difficult access to food citizens in Eastern Ghouta are facing especially compared to other areas across Syria.

TOT between sheep and wheat flour

In December 2017, the national average price of a two-year old male sheep was SYP 102,314/head. The price increased by six percent compared to last month, but was seven percent below the price in June 2017 and 23 percent above the y-o-y price.

The national average TOT between a sheep and wheat flour was 319Kg/sheep, which is 20 percent higher compared to last month showing that the price for a two-year old sheep is increasing faster than the price of wheat flour. In December the price was 34 percent higher compared to six months ago and 21 percent higher year-on-year (Chart 16).

H. International market prices

In December, wheat prices on local markets averaged USD 493/MT down from USD 629/MT year-on-year. In comparison the wholesale price of wheat on international markets was USD 184/MT in December 2017, up by 2.5 percent compared to November and up by 30 percent y-o-y.

Syria's inflation rate in December 2017, was estimated at 43.2 percent. Syria's inflation rate was officially last recorded at 50.4 percent in October 2016. Forecasts from tradingeconomics.com anticipate a decreasing inflation rate in 2018 (Chart 18).

2. The TOT are proxy indicators of the purchasing power of households that rely on

livestock and/or casual labour as their main source of income for the purchase of cereals from local markets. TOT are important components of food security analysis. Changes in the terms of trade between wages/livestock and staple food commodities are indicative of the trends in purchasing power and the impact on the food security situation of households dependent on food purchases through income from daily wage labour and/or the sale of livestock.

Chart 15: Terms of Trade (TOT) between wage labour and wheat flour

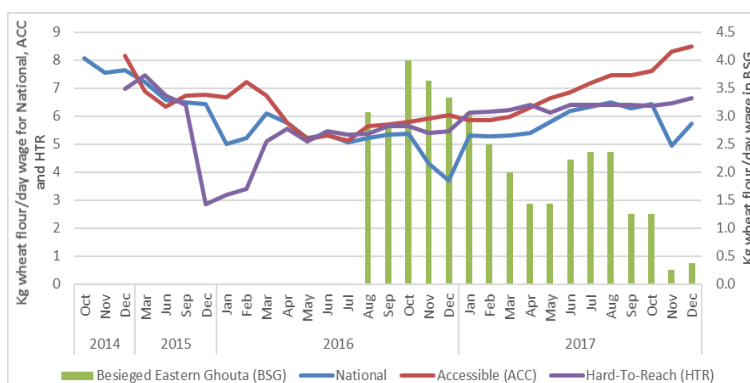
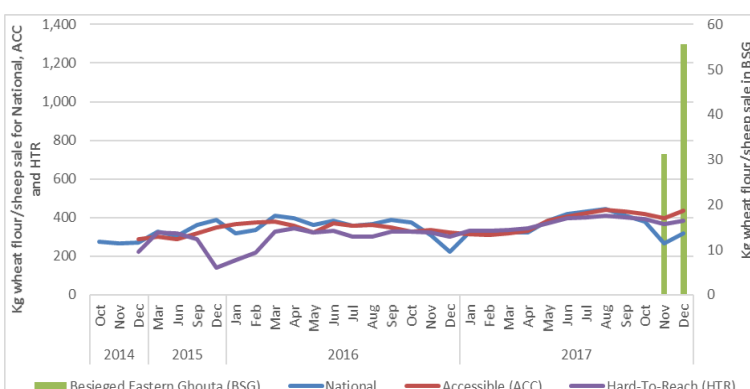


Chart 16: Terms of Trade (TOT) between sheep and wheat flour



Source: WFP Field Offices

Chart 17: Trends in global wheat prices

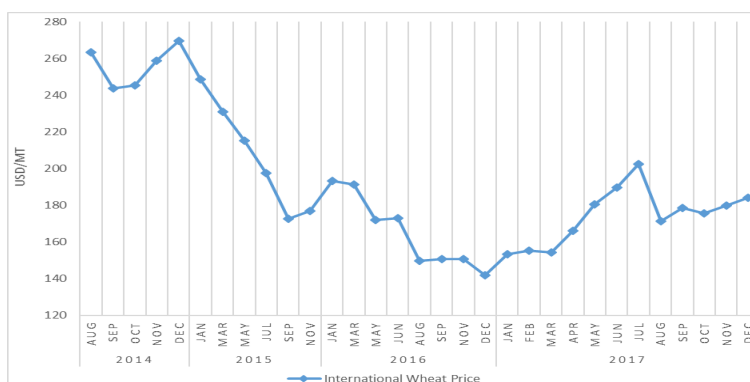
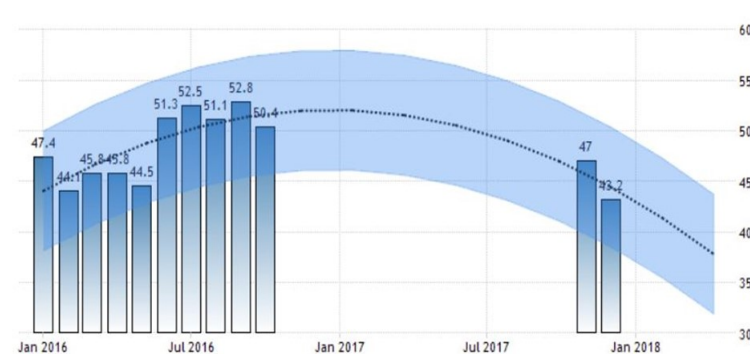


Chart 18: Syria Inflation rate and 2018 forecast



Data Sources: https://ycharts.com/indicators/us_hard_red_winter_wheat_export_price_gulf_ports and <https://tradingeconomics.com/syria/inflation-cpi>

Commodity	Governorate	Current Price	Price change (%)	Price change (%)	Average Change	Average Change	Commodity	Governorate	Current Price	Price change (%)	Price change (%)	Average Change	Average Change
			1M	6 M	1M	6 M				1M	6 M		
Bread Public (1.5 kg)	Aleppo	106	-1.6	-7.8	↓	↓	Date (kg)	Aleppo	1,016	-8.1	5.0	↓	↑
	Damascus	50	-	-	↔	↔		Damascus	1,050	-10.7	-4.5	↓	↓
	Dar'a	50	-	-	↔	↔		Dar'a	1,050	-8.8	-0.5	↓	↓
	Deir-ez-Zor	100	-	-	↔	↔		Deir-ez-Zor	1,300	-	-28.9	↔	↓
	Idlib	250	-	-9.1	↔	↓		Idlib	900	20.0	80.0	↑	↑
	Hama	50	-	-	↔	↔		Hama	1,450	9.3	32.4	↑	↑
	Al- Hasakeh	50	-	-	↔	↔		Al- Hasakeh	850	-11.1	-15.0	↓	↓
	Homs	50	-	-	↔	↔		Homs	1,450	1.4	33.3	↑	↑
	Lattakia	50	-	-	↔	↔		Lattakia	1,050	-12.5	-12.5	↓	↓
	Quneitra	75	-	-4.5	↔	↓		Quneitra	1,425	1.3	28.1	↑	↑
	Ar- Raqqa	85	-15.7	-12.5	↓	↓		Ar- Raqqa	800	-15.8	-20.0	↓	↓
	Rural Damascus	50	-	-	↔	↔		Rural Damascus	1,100	-11.9	-21.4	↓	↓
	As-Sweida	50	-	-	↔	↔		As-Sweida	1,500	3.6	25.0	↑	↑
Tartous	50	-	-	↔	↔	Tartous	1,025	-16.9	-16.9	↓	↓		
Commercial Bread (1.5 kg)	Aleppo	231	2.5	21.0	↑	↑	Diesel (L)	Aleppo	335	-0.3	1.1	↓	↑
	Damascus	100	-	-4.5	↔	↓		Damascus	333	-	8.3	↔	↑
	Dar'a	150	-	-	↔	↔		Dar'a	338	3.1	12.5	↑	↑
	Deir-ez-Zor	235	-	30.0	↔	↑		Deir-ez-Zor	294	-2.0	-28.5	↓	↓
	Idlib	275	-	-8.3	↔	↓		Idlib	235	-	-13.0	↔	↓
	Hama	75	-	13.1	↔	↑		Hama	350	40.0	-6.7	↑	↓
	Al- Hasakeh	138	-	-	↔	↔		Al- Hasakeh	119	-	32.5	↔	↑
	Homs	83	8.0	-8.4	↑	↓		Homs	225	2.4	2.4	↑	↑
	Lattakia	75	-	-	↔	↔		Lattakia	270	10.0	-10.0	↑	↓
	Quneitra	145	6.3	-5.0	↓	↓		Quneitra	323	6.3	28.1	↑	↑
	Ar- Raqqa	132	-13.8	19.6	↓	↑		Ar- Raqqa	135	-16.7	-8.0	↓	↓
	Rural Damascus	88	2.6	-	↑	↔		Rural Damascus	328	-	-6.4	↔	↓
	As-Sweida	75	-	-	↔	↔		As-Sweida	363	-	-3.2	↔	↓
Tartous	63	-	0.3	↔	↑	Tartous	263	-	-4.2	↔	↓		
Bulgur (kg)	Aleppo	240	-5.1	6.0	↓	↑	Fish (Sardine, canned)	Aleppo	241	-4.4	0.1	↓	↔
	Damascus	307	-3.5	7.1	↓	↑		Damascus	350	-	-	↔	↔
	Dar'a	238	1.5	37.5	↑	↑		Dar'a	238	-	-5.0	↔	↓
	Deir-ez-Zor	450	-7.1	-35.6	↓	↓		Deir-ez-Zor	375	-14.9	-31.9	↓	↓
	Idlib	213	-15.0	-11.1	↓	↓		Idlib	200	-11.1	-11.1	↓	↓
	Hama	357	11.3	22.5	↑	↑		Hama	260	5.4	-5.5	↑	↓
	Al- Hasakeh	257	-4.7	8.7	↓	↑		Al- Hasakeh	250	-	-	↔	↔
	Homs	357	9.2	46.3	↑	↑		Homs	247	-	-	↔	↔
	Lattakia	288	-	-2.0	↔	↓		Lattakia	279	-3.8	4.6	↓	↑
	Quneitra	220	-2.0	-8.6	↓	↓		Quneitra	213	-	-11.1	↔	↓
	Ar- Raqqa	307	-8.4	2.6	↓	↑		Ar- Raqqa	294	-10.2	-9.1	↓	↓
	Rural Damascus	307	-1.8	2.2	↓	↑		Rural Damascus	263	-3.1	-5.0	↓	↓
	As-Sweida	288	-	-4.2	↔	↓		As-Sweida	275	-	-	↔	↔
Tartous	275	-11.7	-18.3	↓	↓	Tartous	300	-4.5	-8.3	↓	↓		
Butane Cylinder													

Commodity	Governorate	Current Price	Price change (%)	Price change (%)	Average Change	Average Change	Commodity	Governorate	Current Price	Price change (%)	Price change (%)	Average Change	Average Change
			1M	6 M	1M	6 M				1M	6 M		
Bread Public (1.5 kg)	Aleppo	108	-1.6	-7.8	↓	↓	Date (kg)	Aleppo	1,016	-6.1	5.0	↓	↑
	Damascus	50	-	-	↔	↔		Damascus	1,050	-10.7	-4.5	↓	↓
	Dar'a	50	-	-	↔	↔		Dar'a	1,050	-8.8	-0.5	↓	↓
	Deir-ez-Zor	100	-	-	↔	↔		Deir-ez-Zor	1,300	-	-28.9	↔	↓
	Idlib	250	-	-9.1	↔	↓		Idlib	900	20.0	80.0	↑	↑
	Hama	50	-	-	↔	↔		Hama	1,450	9.3	32.4	↑	↑
	Al- Hasakeh	50	-	-	↔	↔		Al- Hasakeh	850	-11.1	-15.0	↓	↓
	Homs	50	-	-	↔	↔		Homs	1,450	1.4	33.3	↑	↑
	Lattakia	50	-	-	↔	↔		Lattakia	1,050	-12.5	-12.5	↓	↓
	Quneitra	75	-	-4.5	↔	↓		Quneitra	1,425	1.3	28.1	↑	↑
	Ar-Raqqa	85	-15.7	-12.5	↓	↓		Ar-Raqqa	800	-15.8	-20.0	↓	↓
	Rural Damascus	50	-	-	↔	↔		Rural Damascus	1,100	-11.9	-21.4	↓	↓
	As-Sweida	50	-	-	↔	↔		As-Sweida	1,500	3.6	25.0	↑	↑
	Tartous	50	-	-	↔	↔		Tartous	1,025	-16.9	-16.9	↓	↓
Commercial Bread (1.5 kg)	Aleppo	231	2.5	21.0	↑	↑	Diesel (L)	Aleppo	335	-0.3	1.1	↓	↑
	Damascus	100	-	-4.5	↔	↓		Damascus	333	-	8.3	↔	↑
	Dar'a	150	-	-	↔	↔		Dar'a	338	3.1	12.5	↑	↑
	Deir-ez-Zor	235	-	30.0	↔	↑		Deir-ez-Zor	294	-2.0	-28.5	↓	↓
	Idlib	275	-	-8.3	↔	↓		Idlib	235	-	-13.0	↔	↓
	Hama	75	-	13.1	↔	↑		Hama	350	40.0	-6.7	↑	↓
	Al- Hasakeh	138	-	-	↔	↔		Al- Hasakeh	119	-	32.5	↔	↑
	Homs	83	8.0	-8.4	↑	↓		Homs	225	2.4	2.4	↑	↑
	Lattakia	75	-	-	↔	↔		Lattakia	270	10.0	-10.0	↑	↓
	Quneitra	145	6.3	-5.0	↑	↓		Quneitra	323	6.3	28.1	↑	↑
	Ar-Raqqa	132	-13.8	19.6	↓	↑		Ar-Raqqa	135	-16.7	-8.0	↓	↓
	Rural Damascus	88	2.6	-	↑	↔		Rural Damascus	328	-	-6.4	↔	↓
	As-Sweida	75	-	-	↔	↔		As-Sweida	363	-	-3.2	↔	↓
	Tartous	63	-	0.3	↔	↑		Tartous	263	-	-4.2	↔	↓
Bulgur (kg)	Aleppo	240	-5.1	6.0	↓	↑	Fish (Sardine, canned)	Aleppo	241	-4.4	0.1	↓	↔
	Damascus	307	-3.5	7.1	↓	↑		Damascus	350	-	-	↔	↔
	Dar'a	238	1.5	37.5	↑	↑		Dar'a	238	-	-5.0	↔	↓
	Deir-ez-Zor	450	-7.1	-35.6	↓	↓		Deir-ez-Zor	375	-14.9	-31.9	↓	↓
	Idlib	213	-15.0	-11.1	↓	↓		Idlib	200	-11.1	-11.1	↓	↓
	Hama	357	11.3	22.5	↑	↑		Hama	260	5.4	-5.5	↑	↓
	Al- Hasakeh	257	-4.7	8.7	↓	↑		Al- Hasakeh	250	-	-	↔	↔
	Homs	357	9.2	46.3	↑	↑		Homs	247	-	-	↔	↔
	Lattakia	288	-	-2.0	↔	↓		Lattakia	279	-3.8	4.6	↓	↑
	Quneitra	220	-2.0	-8.6	↓	↓		Quneitra	213	-	-11.1	↔	↓
	Ar-Raqqa	307	-8.4	2.6	↓	↑		Ar-Raqqa	294	-10.2	-9.1	↓	↓
	Rural Damascus	307	-1.8	2.2	↓	↑		Rural Damascus	263	-3.1	-5.0	↓	↓
	As-Sweida	288	-	-4.2	↔	↓		As-Sweida	275	-	-	↔	↔
	Tartous	275	-11.7	-18.3	↓	↓		Tartous	300	-4.5	-8.3	↓	↓
Butane Cylinder (10 kg)	Aleppo	3,363	-0.9	-3.3	↓	↓	Fish (tuna, canned)	Aleppo	370	-1.0	4.8	↓	↑
	Damascus	2,800	1.9	3.7	↑	↑		Damascus	475	0.6	3.9	↑	↑
	Dar'a	5,750	3.1	2.8	↑	↑		Dar'a	425	-	6.3	↔	↑
	Deir-ez-Zor	5,363	-2.2	-27.1	↓	↓		Deir-ez-Zor	475	-10.5	-36.0	↓	↓
	Idlib	7,100	-1.4	-16.5	↓	↓		Idlib	375	-6.3	15.4	↓	↑
	Hama	3,200	23.1	-5.7	↑	↓		Hama	573	7.9	0.0	↑	↔
	Al- Hasakeh	2,250	-2.2	-22.9	↓	↓		Al- Hasakeh	400	-1.6	-8.5	↓	↓
	Homs	2,617	-0.6	-0.6	↓	↓		Homs	480	2.2	9.9	↑	↑
	Lattakia	3,000	-	-3.1	↔	↓		Lattakia	363	-	-	↔	↔
	Quneitra	5,475	2.9	-4.2	↑	↓		Quneitra	435	-	-2.9	↔	↓
	Ar-Raqqa	6,425	-16.4	-10.3	↓	↓		Ar-Raqqa	438	-6.8	-7.7	↓	↓
	Rural Damascus	2,800	-	0.1	↔	↑		Rural Damascus	457	-1.9	4.5	↓	↑
	As-Sweida	2,900	-	-	↔	↔		As-Sweida	450	-	5.9	↔	↑
	Tartous	3,000	-	-	↔	↔		Tartous	375	-	-1.7	↔	↓
Cheese (kg)	Aleppo	1,606	-4.4	13.2	↓	↑	Iodised salt (kg)	Aleppo	199	-0.7	12.1	↓	↑
	Damascus	1,400	2.8	7.7	↑	↑		Damascus	128	-	2.0	↔	↑
	Dar'a	1,225	-	36.4	↔	↑		Dar'a	150	-	-3.1	↔	↓
	Deir-ez-Zor	1,800	-19.5	-27.5	↓	↓		Deir-ez-Zor	150	-5.8	5.0	↓	↑
	Idlib	1,300	-3.6	30.0	↓	↑		Idlib	88	-	-12.5	↔	↓
	Hama	1,433	0.1	-3.3	↔	↓		Hama	160	-5.9	6.7	↓	↑
	Al- Hasakeh	1,300	-1.9	8.3	↓	↓		Al- Hasakeh	100	-	-	↔	↔
	Homs	1,367	2.8	10.9	↑	↑		Homs	185	0.9	24.1	↑	↑
	Lattakia	1,500	-	7.1	↔	↑		Lattakia	50	-	-	↔	↔
	Quneitra	1,075	-	2.3	↔	↑		Quneitra	95	-6.5	-8.3	↓	↓
	Ar-Raqqa	1,500	3.1	-3.5	↑	↓		Ar-Raqqa	200	-20.0	-	↓	↔
	Rural Damascus	1,250	-3.1	-7.6	↓	↓		Rural Damascus	125	-	-16.7	↔	↓
	As-Sweida	1,350	1.9	-10.0	↑	↓		As-Sweida	150	-	-	↔	↔
	Tartous	1,350	-	-7.0	↔	↓		Tartous	63	-	-	↔	↔
Chickpeas (kg)	Aleppo	465	-3.7	0.9	↓	↑	Lentils (kg)	Aleppo	458	-5.8	-2.5	↓	↓
	Damascus	775	6.9	10.7	↑	↑		Damascus	525	-8.7	-20.7	↓	↓
	Dar'a	394	-1.2	4.2	↓	↑		Dar'a	438	-	-15.6	↔	↓
	Deir-ez-Zor	738	-25.1	-29.8	↓	↓		Deir-ez-Zor	650	-	25.0	↔	↑
	Idlib	375	-6.3	36.7	↓	↑		Idlib	413	-	-17.5	↔	↓
	Hama	703	-5.4	15.8	↓	↑		Hama	510	0.8	-19.4	↑	↓
	Al- Hasakeh	588	-2.2	-4.1	↓	↓		Al- Hasakeh	432	-4.1	-8.7	↓	↓
	Homs	813	8.8	53.6	↑	↑		Homs	507	-5.3	-12.7	↓	↓
	Lattakia	713	-4.9	-7.7	↓	↓		Lattakia	463	-	-27.5	↔	↓
	Quneitra	425	-	-17.6	↓	↓		Quneitra	425	-	-12.5	↔	↓
	Ar-Raqqa	644	-1.0	-2.0	↓	↓		Ar-Raqqa	600	-12.5	-23.4	↓	↓
	Rural Damascus	763	-0.3	-10.3	↓	↓		Rural Damascus	475	-9.5	-19.7	↓	↓
	As-Sweida	675	-	-12.8	↔	↓		As-Sweida	700	-3.3	-22.2	↓	↓
	Tartous	600	-3.8	-11.0	↓	↓		Tartous	475	-20.8	-24.0	↓	↓
Key:	↑	Prices increase above normal price fluctuation											
	↔	Normal Price Fluctuation											
	↓	Price decrease below normal price fluctuation											

Commodity Price and Change Analysis - Q3 2023															
Commodity	Governorate	Current Price	Price change (%)	Price change (%)	Average Change	Average Change	Commodity	Governorate	Current Price	Price change (%)	Price change (%)	Average Change	Average Change		
			1M	6 M	1M	6 M				1M	6 M				
Meat (beef, kg)	Aleppo	3,100	-2.4	-1.1	↓	↓	Tea (kg)	Aleppo	3,708	-5.3	1.2	↓	↑		
	Damascus	4,025	-4.8	-3.3	↓	↓		Damascus	3,650	-	7.5	↔	↑		
	Dar'a	3,950	-3.6	13.6	↓	↑		Dar'a	4,000	-	-0.5	↔	↓		
	Deir-ez-Zor	4,725	5.6	-13.5	↑	↓		Deir-ez-Zor	4,750	-22.6	-26.0	↓	↓		
	Idlib	2,250	-6.3	-16.7	↓	↓		Idlib	3,450	-10.4	1.5	↓	↑		
	Hama	4,467	-5.0	15.0	↓	↑		Hama	3,850	-1.3	2.2	↓	↑		
	Al-Hasakeh	3,500	-1.4	14.8	↓	↑		Al-Hasakeh	3,700	-3.9	6.5	↓	↑		
	Homs	4,783	0.4	13.9	↑	↑		Homs	3,800	-1.8	4.2	↓	↑		
	Latakia	3,750	-8.3	-7.5	↓	↓		Latakia	3,450	-6.7	1.7	↓	↑		
	Quneitra	3,625	3.6	13.2	↑	↑		Quneitra	3,600	-	2.7	↔	↑		
	Ar-Raqqa	2,750	-	-	↔	↔		Ar-Raqqa	4,025	-7.3	1.8	↓	↑		
	Rural Damascus	3,725	-2.0	-13.8	↓	↓		Rural Damascus	3,900	0.6	6.9	↑	↑		
	As-Sweida	4,100	-	13.9	↔	↑		As-Sweida	3,250	-9.7	-6.7	↓	↓		
	Tartous	3,850	-6.3	-5.8	↓	↓		Tartous	2,250	-8.3	-12.6	↓	↓		
Oil (L)	Aleppo	663	-4.4	-6.3	↓	↓	Tomato paste (kg)	Aleppo	1,094	-4.7	-4.4	↓	↓		
	Damascus	638	0.2	-15.0	↑	↓		Damascus	725	-8.2	-14.9	↓	↓		
	Dar'a	688	-1.7	-0.5	↓	↓		Dar'a	650	-	-	↔	↔		
	Deir-ez-Zor	1,375	-7.6	2.9	↓	↑		Deir-ez-Zor	750	-8.3	-39.3	↓	↓		
	Idlib	500	-4.5	-19.9	↓	↓		Idlib	575	-17.9	15.0	↓	↑		
	Hama	677	7.9	-12.7	↑	↓		Hama	683	-1.4	-24.1	↓	↓		
	Al-Hasakeh	519	-2.3	-13.5	↓	↓		Al-Hasakeh	500	-1.3	3.2	↓	↑		
	Homs	708	3.5	-6.6	↑	↓		Homs	733	-3.7	-23.0	↓	↓		
	Latakia	600	-7.7	-15.6	↓	↓		Latakia	675	-3.6	-7.1	↓	↓		
	Quneitra	750	-4.5	-4.5	↓	↓		Quneitra	243	-4.8	-29.6	↓	↓		
	Ar-Raqqa	750	-10.6	-21.2	↓	↓		Ar-Raqqa	738	-6.8	-1.3	↓	↓		
	Rural Damascus	638	-1.9	-16.3	↓	↓		Rural Damascus	750	-11.8	-16.7	↓	↓		
	As-Sweida	600	-3.8	-27.2	↓	↓		As-Sweida	525	-	-4.5	↔	↓		
	Tartous	600	-4.2	-20.0	↓	↓		Tartous	650	-7.1	-10.5	↓	↓		
Parsley (packet)	Aleppo	44	0.3	16.0	↑	↑	Tomatoes (kg)	Aleppo	202	66.4	15.1	↑	↑		
	Damascus	47	-17.3	5.6	↓	↑		Damascus	250	45.8	30.1	↑	↑		
	Dar'a	75	-	-16.7	↔	↓		Dar'a	100	-	-11.5	↔	↓		
	Deir-ez-Zor	100	-	-25.0	↔	↓		Deir-ez-Zor	400	-	-37.1	↔	↓		
	Idlib	50	-	-	↔	↔		Idlib	288	62.1	-42.5	↑	↓		
	Hama	50	-	-5.6	↔	↓		Hama	257	70.0	50.6	↑	↑		
	Al-Hasakeh	88	-12.0	-1.1	↓	↓		Al-Hasakeh	275	-8.3	-	↓	↔		
	Homs	50	-	-	↔	↔		Homs	217	20.4	12.4	↑	↑		
	Latakia	40	-55.0	-55.0	↓	↓		Latakia	213	79.2	32.1	↑	↑		
	Quneitra	23	-	-35.7	↔	↓		Quneitra	92	18.3	-60.3	↑	↓		
	Ar-Raqqa	82	-18.5	-12.5	↓	↓		Ar-Raqqa	238	-20.8	-11.7	↓	↓		
	Rural Damascus	29	-25.1	-32.6	↓	↓		Rural Damascus	230	105.0	8.0	↑	↑		
	As-Sweida	38	-24.0	-49.3	↓	↓		As-Sweida	150	50.0	-27.9	↑	↓		
	Tartous	22	-24.0	-59.2	↓	↓		Tartous	250	66.7	42.9	↑	↑		
Pasta (kg)	Aleppo	500	-3.6	0.7	↓	↑	Unskilled Labor wage	Aleppo	2,425	6.5	24.3	↑	↑		
	Damascus	469	-2.6	-6.2	↓	↓		Damascus	1,900	2.9	26.7	↑	↑		
	Dar'a	513	-2.3	-10.6	↓	↓		Dar'a	1,350	-	12.5	↔	↑		
	Deir-ez-Zor	713	-7.5	-35.3	↓	↓		Deir-ez-Zor	1,250	-	10.0	↔	↑		
	Idlib	100	-	-	↔	↔		Idlib	2,000	-	-	↔	↔		
	Hama	550	-2.2	-2.2	↓	↓		Hama	2,000	-3.0	5.8	↓	↑		
	Al-Hasakeh	282	-6.2	2.4	↓	↑		Al-Hasakeh	1,050	6.3	14.3	↑	↑		
	Homs	507	-10.0	-7.3	↓	↓		Homs	1,967	-1.7	20.5	↓	↑		
	Latakia	275	-	-	↔	↔		Latakia	2,000	-	-	↔	↔		
	Quneitra	413	-5.3	-4.4	↓	↓		Quneitra	1,350	-	-	↔	↔		
	Ar-Raqqa	725	-14.1	32.5	↓	↑		Ar-Raqqa	1,975	-5.0	10.2	↓	↑		
	Rural Damascus	463	-6.6	-7.5	↓	↓		Rural Damascus	1,900	-	26.7	↔	↑		
	As-Sweida	500	-	5.3	↔	↑		As-Sweida	2,000	-	5.3	↔	↑		
	Tartous	263	-	-	↔	↔		Tartous	2,250	5.6	18.2	↑	↑		
Rice (kg)	Aleppo	525	-2.9	4.8	↓	↑	Wheat Flour (kg)	Aleppo	250	-1.5	5.0	↓	↑		
	Damascus	503	4.8	18.3	↑	↑		Damascus	248	-4.9	-13.9	↓	↓		
	Dar'a	500	-	2.4	↔	↑		Dar'a	223	5.0	5.0	↑	↑		
	Deir-ez-Zor	725	-7.8	-	↓	↔		Deir-ez-Zor	338	-5.2	5.0	↓	↑		
	Idlib	400	-15.6	-20.0	↓	↓		Idlib	225	-	6.3	↔	↑		
	Hama	530	0.1	-5.0	↔	↓		Hama	230	2.3	-15.4	↑	↓		
	Al-Hasakeh	482	-2.5	-4.7	↓	↓		Al-Hasakeh	232	-2.4	3.9	↓	↑		
	Homs	533	6.6	5.3	↑	↑		Homs	270	11.2	7.3	↑	↑		
	Latakia	450	-5.0	-10.0	↓	↓		Latakia	225	-	-13.9	↔	↓		
	Quneitra	525	-4.2	10.6	↓	↑		Quneitra	155	-13.9	-24.3	↓	↓		
	Ar-Raqqa	613	-11.8	-20.5	↓	↓		Ar-Raqqa	338	-12.5	21.9	↓	↑		
	Rural Damascus	519	2.5	9.6	↑	↑		Rural Damascus	243	-7.5	-10.1	↓	↓		
	As-Sweida	313	-	-3.8	↔	↓		As-Sweida	250	-	-9.1	↔	↓		
	Tartous	450	-5.0	-18.2	↓	↓		Tartous	225	-10.0	-2.4	↓	↓		
Sheep 2Y old Male	Aleppo	113,969	-6.2	21.1	↓	↑	White beans (kg)	Aleppo	468	-1.4	-3.5	↓	↓		
	Damascus	89,000	-6.4	-15.2	↓	↓		Damascus	538	13.1	13.9	↑	↑		
	Dar'a	103,500	-2.5	13.9	↓	↑		Dar'a	500	-	33.3	↔	↑		
	Deir-ez-Zor	75,000	-1.4	-40.6	↓	↓		Deir-ez-Zor	963	-	6.7	↔	↑		
	Idlib	87,500	-8.4	12.2	↓	↑		Idlib	400	-	14.3	↔	↑		
	Hama	190,000	65.9	17.7	↑	↑		Hama	587	2.4	-2.5	↑	↓		
	Al-Hasakeh	58,750	-2.1	-15.5	↓	↓		Al-Hasakeh	557	-3.1	6.2	↓	↑		
	Homs	120,833	5.5	8.5	↑	↑		Homs	605	-0.6	6.7	↓	↑		
	Latakia	70,400	-1.5	-21.8	↓	↓		Latakia	675	-2.8	-1.4	↓	↑		
	Quneitra	132,188	-3.5	13.8	↓	↑		Quneitra	450	-	-3.6	↔	↓		
	Ar-Raqqa	63,750	1.8	10.8	↑	↑		Ar-Raqqa	663	-11.3	-4.9	↓	↓		
	Rural Damascus	84,000	-9.7	-19.9	↓	↓		Rural Damascus	525	-4.5	-4.5	↓	↓		
	As-Sweida	84,500	-	-2.4	↔	↓		As-Sweida	550	-	4.8	↔	↑		
	Tartous	70,400	-8.7	-21.8	↓	↓		Tartous	575	-10.7	-3.1	↓	↓		
Sugar (kg)	Aleppo	368	-9.6	3.1	↓	↑	Yogurt (kg)	Aleppo	400	-7.1	6.8	↓	↑		
	Damascus	249	-6.9	-34.8	↓	↓		Damascus	319	6.3	16.8	↑	↑		
	Dar'a	278	-9.9	-27.6	↓	↓		Dar'a	357	-1.3	20.3	↓	↑		
	Deir-ez-Zor	600	-14.7	-47.6	↓	↓		Deir-ez-Zor	475	-	-32.8	↔	↓		
	Idlib	295	-22.1	-34.4	↓	↓		Idlib	238	-	-5.0	↔	↓		
	Hama	270	1.4	-31.0	↑	↓		Hama	350	16.5	-23.7	↑	↓		
	Al-Hasakeh	344	-3.5	-19.1	↓	↓		Al-Hasakeh	332	-3.6	15.4	↓	↑		
	Homs	280	-7.0	-20.2	↓	↓		Homs	283	-5.8	-4.0	↓	↓		
	Latakia	250	-8.3	-36.5	↓	↓		Latakia	288	-	4.5	↔	↑		
	Quneitra	258	-11.2	-35.9	↓	↓		Quneitra	213	-	-3.8	↔	↓		
	Ar-Raqqa	413	-12.2	-21.5	↓	↓		Ar-Raqqa	369	-7.3	6.3	↓	↑		
	Rural Damascus	239	-8.5	-35.7	↓	↓		Rural Damascus	313	2.2	25.2	↓	↑		
	As-Sweida	250	-	-34.5	↔	↓		As-Sweida	275	-	-	↔	↔		
	Tartous	275	-	-31.3	↔	↓		Tartous	300	-	0.7	↔	↑		