



## Food Basket Monitoring report

1<sup>st</sup> cycle January 2018

AME Unit, CO Uganda

### Key findings

- Biggest deviation of the quantity received was recorded for salt. In many cases, households tended to receive much more of the quantity compared to their ration.
- In Palabek, Kiryandongo and Adjumani, households tended to receive less quantity of different commodities.
- In Palabek, households received up to 17% of pulses, 16% CSB and 12% cereals below the acceptable deviation level (-/+ 10%).
- On the other hand, in some settlements, households received slightly more of several commodities, compared to their ration. This was the case especially in Palorinya and Nakivale.
- In Palorinya, households received 10% pulses and in Nakivale 9% CSB, 5% pulses and oil above the acceptable deviation level.
- Households in 50% ration group tend to receive between 10 to 30% more of cereals, pulses, CSB and oil, compared to other ration groups.
- In four (4) cases, households did not receive the right amount of cash (Adjumani and Rwamwanja). In two cases (both in Rwamwanja), households (6 and 7-member families) received only 10% of the expected amount of cash.
- The average waiting time was 3.20 hours for food beneficiaries and 1.60 hours for cash beneficiaries. The longest waiting times for both, cash (5 hours) and food beneficiaries (6 hours) were reported in Kiryandongo.
- On average, female respondents walked slightly more (2.13 km) compared to men (1.86 km).
- No significant differences were found for female and male respondents in terms of likelihood of receiving the accurate quantities/amount of their entitlements.
- The highest levels of dissatisfaction with the distribution process were reported in Palorinya (68%), Palabek (57%), Nakivale and Adjumani (both 48%).
- Around 16% of all respondents did not know where they would address their complaints, if needed



# Demographic characteristics

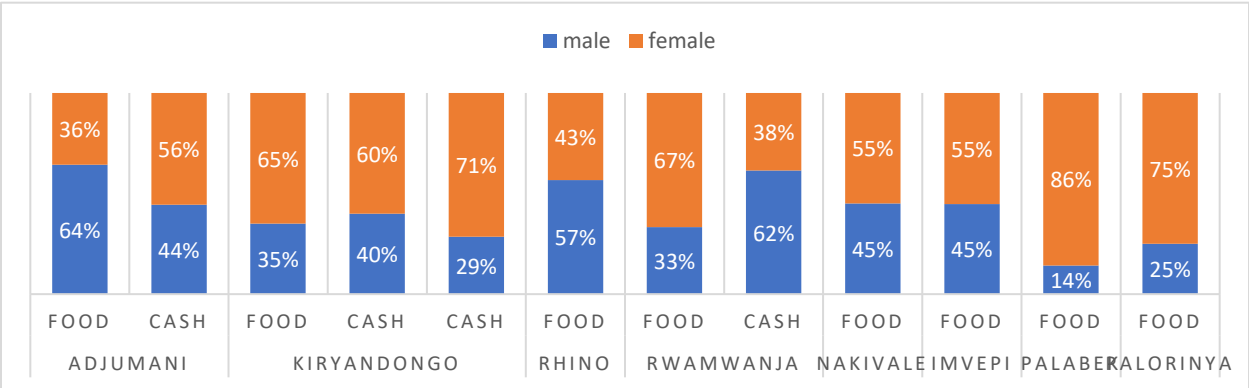
Overall, 262 respondents were surveyed during the 1<sup>st</sup> distribution cycle in 2018. (Table 1).

Table 1: Sample size by settlement

| 1 <sup>st</sup> cycle | Adjum. | Kiryan. | Koboko | Rhino | Rwam. | Nakiv. | Imve. | Palab. | Palor. | Total |
|-----------------------|--------|---------|--------|-------|-------|--------|-------|--------|--------|-------|
|                       | 46     | 30      | 14     | 30    | 35    | 31     | 29    | 7      | 40     | 262   |

A total of 115 male and 147 female respondents were interviewed. Especially high rates of female respondents were recorded in Palabek (86% of food beneficiaries), Palorinya (75% of food beneficiaries) and Koboko (71% of cash beneficiaries) (Figure 1).

Figure 1: Gender of beneficiaries by settlement and modality

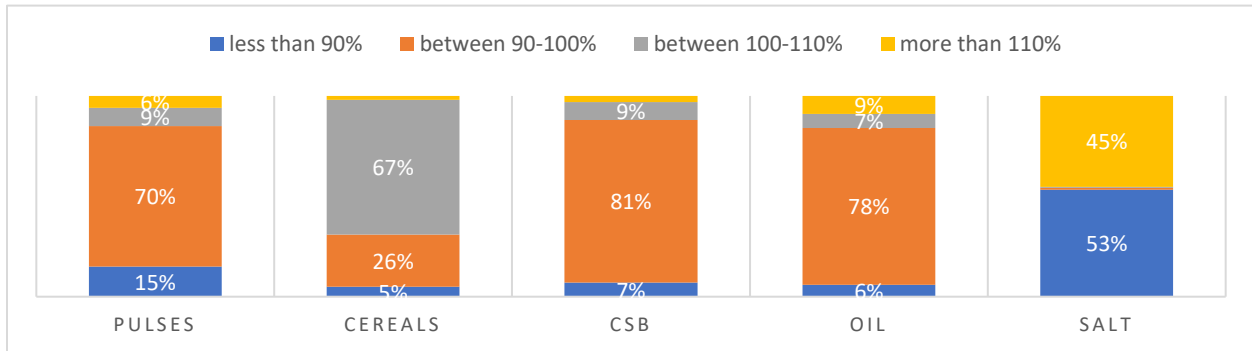


Overall, among the interviewed, 83% of households were on 100% ration, 10% on EVI ration, 7% on 50% ration and no respondents were on 25% ration. The highest proportion of respondents on the EVI ration was found in Kiryandongo (30%) and Rwamwanja (26%), while in Nakivale 39% of respondents were on 50% ration. In Palorinya, Palabek, Imvepi and Rhino camp, all respondents were on 100% ration.

## Food/Cash basket

Overall, quantities of pulses, CSB and oil were within +/-10% deviation from the expected amount, except for salt. Further analysis suggests that 45% of respondents received more than 175% of their ration of salt, which is nearly a doubled quantity, while 34% received between 75-50% and 13% of respondents received less than 25% of the expected quantity (Figure 2).

Figure 2: % of respondents by % deviation category by the commodity

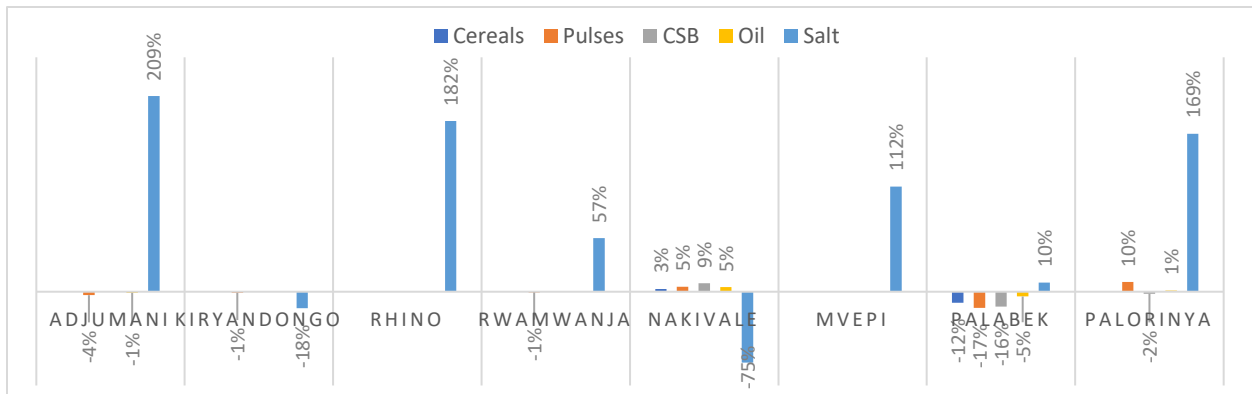


While looking at the mean % deviation of the quantities received per settlement which are greater than the acceptable % deviation (-/+ 10%), results suggest in Palabek, Kiryandongo and Adjumani, households tended to receive less for different commodities. On the other hand, in some settlement, households received overall slightly more compared to their ration, especially in Nakivale and Palorinya (Figure 3).

In addition, across all settlement the quantity of salt distributed was beyond the -/+ 10% interval, ranging from households receiving less than 15% of the ration (-75% deviation in Nakivale +/- 10%) to households receiving more than a triple of the ration (209% deviation in Adjumani +/- 10%).

For the rest of the commodities, in Palabek, households received up to 17% less pulses, 16% CSB and 12% cereals. On the other hand, in Palorinya households have received 10% more pulses and in Nakivale 9% more CSB, 5% more pulses and oil.

Figure 3: mean % deviation of the quantity received by commodity and settlement, relative to expected ration with -/+ 10%



Further analysis revealed that households in 50% ration group tend to receive between 10 to 30% more of cereals, pulses, CSB and oil, compared to other ration groups.

While looking at the family size, smaller households tend to receive more quantity of salt than their ration (more than doubled quantity), while bigger households tend to receive on average 30% less.

When the quantities at the FDP were not visibly displayed, households tended to receive less, especially for salt (50% less than their ration). No significant differences were found by gender of the respondent.

Only in four (4) cases, 3 males and 1 female, households did not receive the right amount of cash (Adjumani and Rwamwanja). These households received 38% to 90% less than their ration. Bigger households, especially for 6 and 7-member families, received less (only 10% of their ration). In all cases respondents indicated that entitlements were properly marked at the distribution point (Table 2).

Table 2: inaccurate amount of cash received

| Settlement | Family size | Received | Expected | % deviation | ration | gender | FDP sign |
|------------|-------------|----------|----------|-------------|--------|--------|----------|
| Adjumani   | 8           | 148,000  | 248,000  | -40%        | 100%   | male   | yes      |
| Rwamwanja  | 3           | 58,000   | 93,000   | -38%        | 100%   | male   | yes      |
|            | 7           | 21,700   | 217,000  | -90%        | 100%   | male   | yes      |
|            | 6           | 18,600   | 186,000  | -90%        | 100%   | female | yes      |

## Distribution process


The main indicators are summarized in the Table 3 (on the following page).

### Additional information

- Overall, majority of respondents were informed by the Food/Cash management committee (58%)
- On average, respondents travelled 2 km to the FDP. Almost 94% of respondents travelled less than 3 km to the FDP.
- Around 37% paid with cash and only 3% paid with food. Among those who paid with cash. On average, the highest amounts of cash were paid in Adjumani (4963 Ugsh.) and Kiryandongo (4310 Ugsh.). Food beneficiaries payed on average UgX 800. more than cash beneficiaries.
- The main reasons for dissatisfaction with the quality and quality of food was presence of stones within beans and the length of cooking.
- Among the respondents not satisfied with the distribution process, 87% were food and 13% cash beneficiaries; 44% were men and 56% women. The main reason for dissatisfaction was small quantities of food or amount of cash given.
- When asked where respondents would address their complaints, most of the refugees would contact Refugee Welfare Council (40%), Food/Cash management committee (29%) and OPM (19%).
- Only 2 respondents, both women and food beneficiaries, reported they have encountered safety issues after the last distribution. The incidents occurred at home, one was robbery without violence (Rhino Camp) and the other related to the wild animal casualties (Palabek).

Table 3: Main indicators related to distribution process

|  | Adjumani | Kiryandongo | Koboko | Rhino | Rwamwanja | Nakivale | Imvepi | Palabek | Palorinya | Total |
|--|----------|-------------|--------|-------|-----------|----------|--------|---------|-----------|-------|
| % of respondents who missed one of the identification documents              | 2%       | 3%          | 0%     | 73%   | 31%       | 0%       | 76%    | 0%      | 40%       | 28%   |
| % of respondents not informed about the date of the distribution             | 11%      | 2%          | 0%     | 3%    | 6%        | 0%       | 7%     | 0%      | 5%        | 5%    |
| Mean waiting time during food/cash distribution (hours)                      | 0.10     | 6           |        | 2.5   | 3.6       | 2.6      | 3.7    | 0.1     | 3.1       | 3.20  |
|  | 0.10     | 4.8         | 1.2    |       | 1.5       |          |        |         |           | 1.60  |
| % of respondents not satisfied with the quantity of food                     | 16%      | 3%          | n/a    | 13%   | 0%        | 13%      | 24%    | 86%     | 0%        | 11%   |
| % of respondents not satisfied with the quality of food                      | 0%       | 0%          | 0%     | 10%   | 0%        | 0%       | 10%    | 0%      | 0%        | 3%    |
| % of respondents not satisfied with the amount of cash                       | 0%       | 5%          | 0%     | n/a   | 0%        | n/a      | n/a    | n/a     | n/a       | 1%    |
| % of respondents who walked more than 5 km to the FDP                        | 0%       | 0%          | 0%     | 0%    | 3%        | 0%       | 0%     | 0%      | 0%        | 0%    |
| % of respondents who paid for transport from FDP after the last distribution | 28%      | 93%         | 0%     | 43%   | 0%        | 48%      | 45%    | 0%      | 62%       | 45%   |
| % of respondents not satisfied with the distribution process                 | 48%      | 7%          | 0%     | 20%   | 14%       | 48%      | 14%    | 57%     | 68%       | 32%   |
| % of respondents reporting information was not displayed at the FDP          | 5%       | 7%          | 50%    | 0%    | 0%        | 23%      | 0%     | 57%     | 0%        | 8%    |
| % of respondents who do not know where to address their complaints           | 7%       | 0%          | 0%     | 23%   | 49%       | 23%      | 14%    | 57%     | 3%        | 16%   |

40% of respondents or more/above the acceptable level 

10% of respondents or less /within the acceptable level 

## Recommendations

When asked, respondents have mostly raised following issues to be address in order to improve the distribution process:

Table 4: Main recommendations by settlement

| Adjumani  | Nakivale   | Palorinya  | Koboko  | Rwamwanja  | Imvepi  | Rhino Camp  | Kiryandongo  |
|---|--|--|---|--|---|---|--|
| <ul style="list-style-type: none"> <li>- Update the cash register</li> <li>- Improve time management during the distribution</li> <li>- Start distribution on time</li> <li>- The amount of cash is not sufficient for the entire month</li> <li>- WFP should be monitoring every FDP &amp; more WFP staff on the ground</li> <li>- Increase salt and oil quantities</li> <li>- Increase personnel at stocking level</li> <li>- Lack of proper weightings scaled</li> <li>- Provide shelters</li> </ul> | <ul style="list-style-type: none"> <li>- Provide water at the FDP</li> <li>- Provision of basic needs at the FDP</li> <li>- Use of accurate weighting scales</li> <li>- Start cash distribution</li> </ul> | <ul style="list-style-type: none"> <li>- EVIs should be served separately</li> <li>- Very small quantity of salt is distributed</li> <li>- Start the distribution earlier</li> <li>- FDPs should be moved closer to blocs were refugees are staying</li> <li>- Weighting scales should be provided for each group</li> <li>- Improve quality of cereals</li> <li>- Distribute sugar</li> <li>- Reduce groups from 20 to 10 family members</li> <li>- Serve food separately for elderly people</li> </ul> | <ul style="list-style-type: none"> <li>- Locate FDP nearby a market for cash distribution</li> <li>- Special consideration for disabled beneficiaries during the distribution</li> <li>- Start the cash distribution on time</li> </ul> | <ul style="list-style-type: none"> <li>- Cases when registered EVIs are not receiving the EVI ration</li> <li>- Start the cash distribution at the beginning of the month</li> <li>- Possibility to designate a person to pick up the ration/cash in case of illness</li> <li>- Congolese refugees should be involved in the distribution process</li> <li>- Increase ration for the EVIs</li> </ul> | <ul style="list-style-type: none"> <li>- Consider first old people during the distribution</li> <li>- Provide shelters at the FDP</li> <li>- Immediately address complaints at the complaint desk</li> <li>- Improve quality of beans</li> <li>- Distribution should be done individually other than in groups of 10</li> <li>- Old people should be given cash separately</li> <li>- Move FDPs closer to residents</li> <li>- Loaders should stop reducing food rations as a form of appreciation</li> </ul> | <ul style="list-style-type: none"> <li>- Provide shelter during the distribution</li> <li>- Right ration should be given</li> <li>- Bring distribution point nearer to residents</li> <li>- Provide tents at the distribution point</li> <li>- Build more FDPs</li> </ul> | <ul style="list-style-type: none"> <li>- Update the food log list</li> </ul> |