



# Focus on conflict-affected groups in Ninewa, Diyala, Erbil and Kirkuk



**vam**  
food security analysis

## mVAM IRAQ: EMERGENCY UPDATE #16

**FEBRUARY 2018**

### Key points:



The share of households with poor or borderline food consumption is falling in Ninewa, Diyala, Erbil and Kirkuk.



One in three households in Ninewa is relying on food-based coping strategies.



Surveyed foods are widely available in Mosul and prices are lower than just after the city was retaken.



### Situation Update

By 28 February 2018, the IOM Displacement Tracking Matrix had identified 3,511,603 people returning to their areas of origin and 2,317,698 internally displaced people (IDPs) across Iraq since January 2014.

Damage to infrastructure and shelters was reported following the heavy rains in mid-February in the Kurdistan Region of Iraq. This affected 130,240 IDPs in camps in Anbar, Baghdad, Salah Aldin, Diyala, Suleimaniya, Erbil, Ninewa and Kirkuk. Assessments of other camps are still underway.

In coordination with the Camp Coordination and Camp Management (CCCM) Cluster, the REACH Initiative conducted a national returns intention survey to inform the camp closure and consolidation initiatives of the humanitarian community and the Government of Iraq. The majority of surveyed IDPs said they had no intention of returning, for fear of a lack of safety in their areas of origin. Relief agencies remain concerned by continued reports of forced evictions and premature camp consolidations, and they continue to advocate for safe, dignified and voluntary returns.



**1327** households surveyed



**33** average age of respondents



**37%** IDPs  
**51%** Returnees  
**12%** Non IDPs



**47%** Own Home  
**30%** Rental  
**17%** Camp  
**5%** Guest  
**1%** Unfinished building



**94%** Male  
**6%** Female

**24**

Key informants called

**19**

Locations surveyed



## Food consumption improves across surveyed governorates

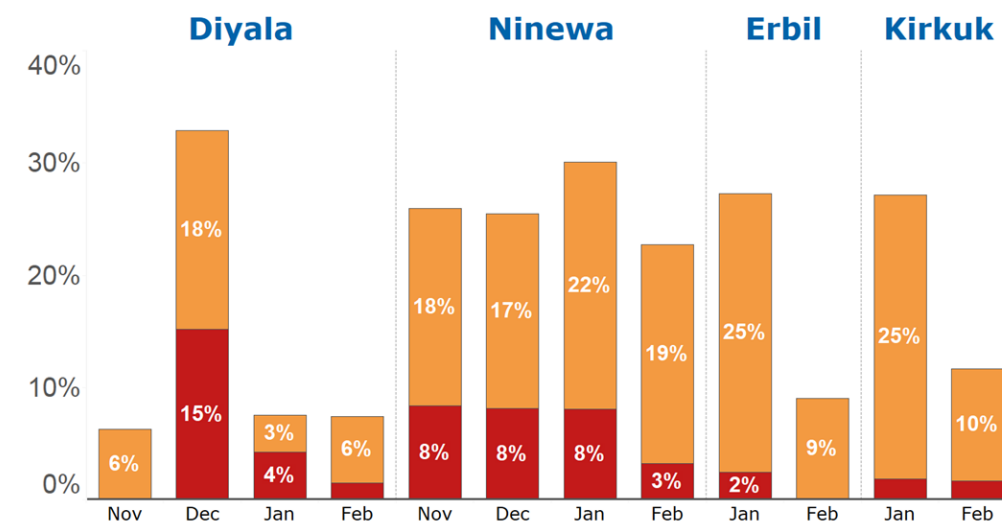
In February, mVAM interviewed IDPs, returnees and resident households affected by the conflict in Erbil and Kirkuk, as well as in selected districts of Ninewa (Telafar, Sinjar, Mosul, Tilkaif and Hamdaniya) and Diyala (Muqadadiya).

The results show an improvement in food consumption among surveyed households in all the surveyed governorates, especially in Ninewa, Erbil and Kirkuk where the percentage of households with poor and borderline food consumption fell between January and February (Figure 1).

In Ninewa, the share of households with inadequate food consumption dropped from 30 percent to 22 percent in February. Inadequate food consumption decreased in all surveyed districts apart from Mosul city, where it has been stable since January. In Sinjar, the share of households with poor food consumption dropped from 12 percent in January to 4 percent in February (Figure 2).

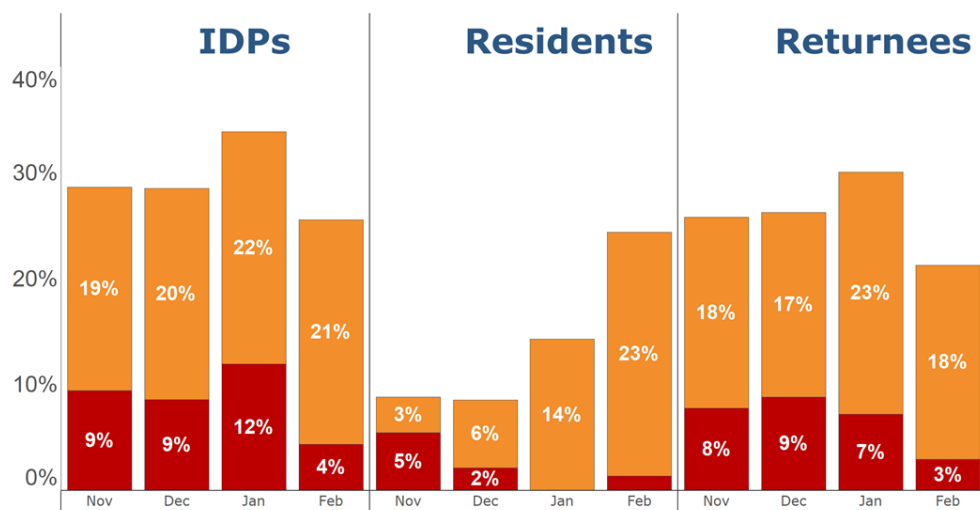
Poor food consumption is also falling among displaced and returnee households in Ninewa. Among returnees, borderline food consumption rates improved from 23 percent in January to 18 percent in February (Figure 3).

**Figure 1. Households with inadequate consumption in surveyed governorates,**

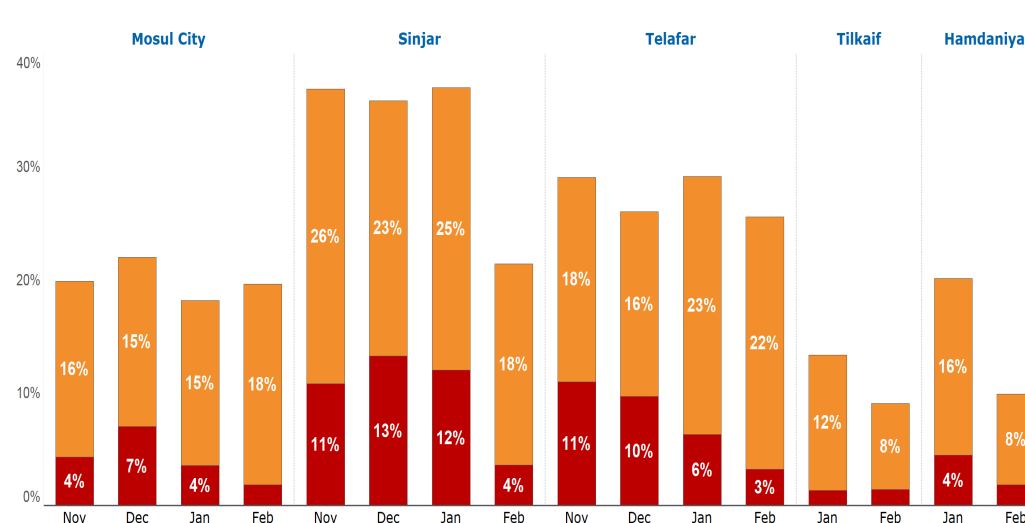


\*Data not collected in Erbil and Kirkuk for November and December 2017

**Figure 3. Households with inadequate consumption in districts of Ninewa by respondent status, November 2017 to February 2018**



**Figure 2. Households with inadequate consumption in districts of Ninewa, November 2017 to February 2018**



\*Data not collected in Tilkaif and Hamdaniya for November and December 2017



## Negative coping behaviour on the rise in Ninewa

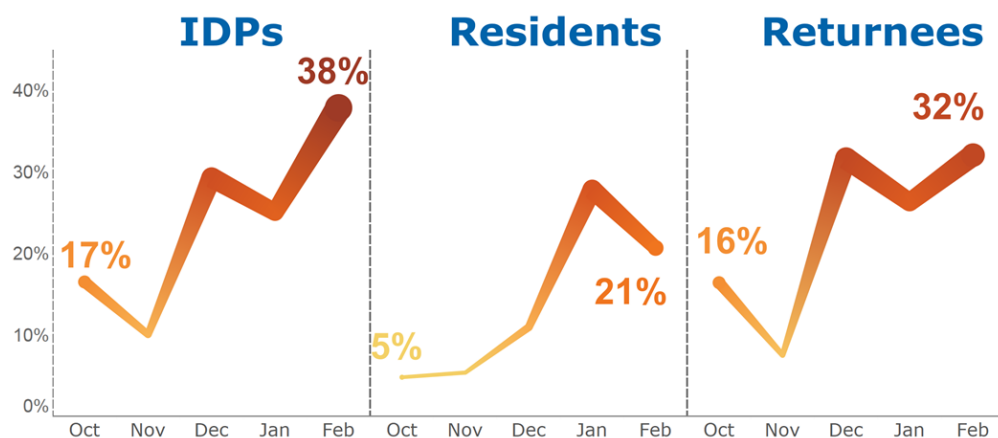
Surveyed households were asked if there were times in the seven days before the survey when they did not have enough food or money to buy food.

The percentage of households who reported using food-related coping strategies fell from 28 percent to 9 percent in Erbil and from 39 percent to 18 percent in Kirkuk. In Kirkuk, 38 percent of surveyed households reported having received food assistance in the month before the survey. However, it rose from 26 percent to 33 percent in Ninewa in February (Figure 4).

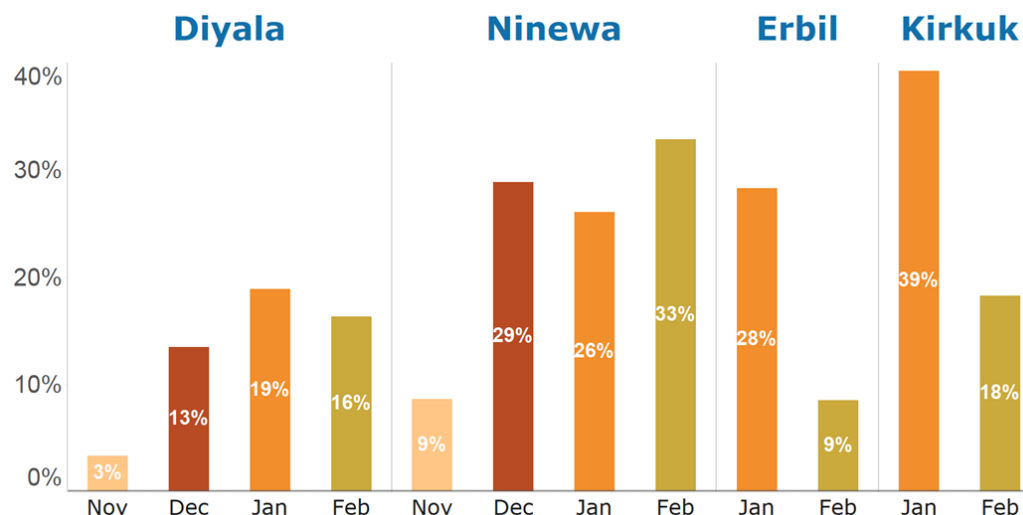
The increase was particularly marked in the district of Telafar, where the share of households relying on food-related coping strategies went up from 28 percent to 39 percent (Figure 5).

The use of negative coping strategies also rose among IDPs and returnees in Ninewa (Figure 6). In February, more of these households borrowed money or relied on help from friends and family, limited portion sizes and/or ate fewer meals per day.

**Figure 6. Percentage of households using food-based negative coping strategies in surveyed districts of Ninewa by respondent status, October 2017 to February 2018**

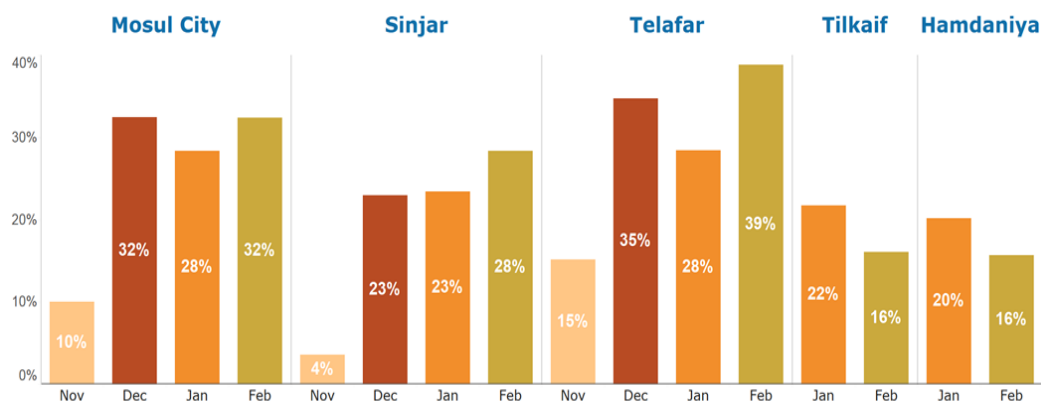


**Figure 4. Percentage of households using food-based negative coping strategies in surveyed governorates, November 2017 and February 2018**



\*Data not collected in Erbil and Kirkuk for November and December 2017

**Figure 5. Percentage of households using food-based negative coping strategies in surveyed districts of Ninewa, November 2017 to February 2018**



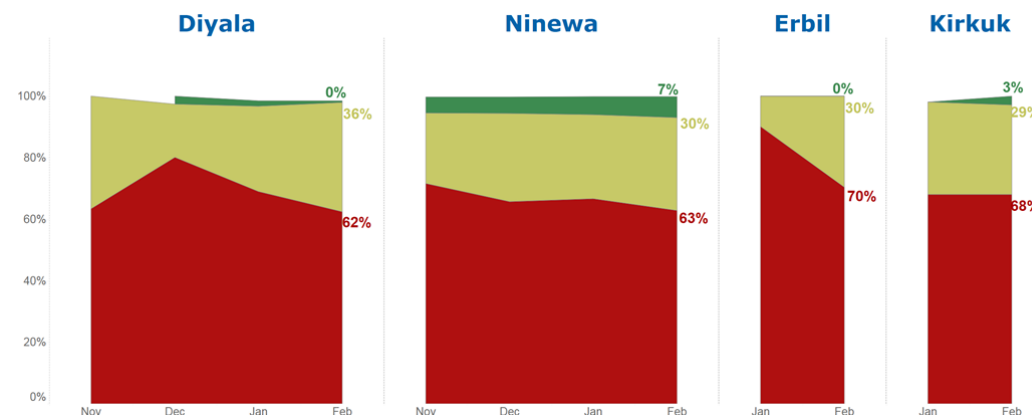
\*Data not collected in Tilkaif and Hamdaniya for November and December 2017



## Despite improvements in Erbil, access to the public distribution system remains very low

In February, household access to the public distribution system (PDS) was similar in all surveyed governorates. Although PDS access improved in February in Erbil, 70 percent of households reported not receiving rations in February (Figure 7).

**Figure 7. Percentage of households receiving PDS in surveyed governorates, November 2017 to February 2018**



\*Data not collected in Erbil and Kirkuk for November and December 2017

### Methodology – mVAM remote data collection

In February 2017, mVAM conducted household food security monitoring using telephone interviews. Data were collected from 1327 respondents via Korek, a major mobile network operator, between 11 February and 5 March. WFP monitored respondents living in several locations in the governorates of Ninewa, Diyala, Erbil (in IDP camps) and Kirkuk (in IDP camps). Respondents were drawn from Korek's database. The data were weighted by the number of mobile phones owned by the household.

In addition, in collaboration with Islamic Relief Worldwide, key informant interviews were conducted, covering 12 locations in eastern Mosul and 7 locations in western Mosul.



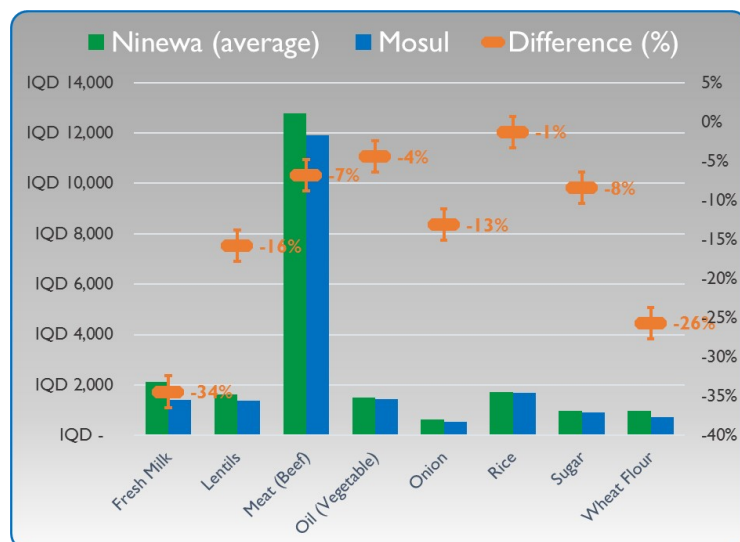


### Purchasing power remains low in western Mosul

In February, food prices continued on a slow but steady downward trend in Mosul. All monitored food prices were lower in Mosul than in the rest of Ninewa (Figure 8), making the food basket 10 percent cheaper in the city. In particular, fresh milk was 34 percent cheaper and wheat flour was 26 percent cheaper than elsewhere in the governorate.

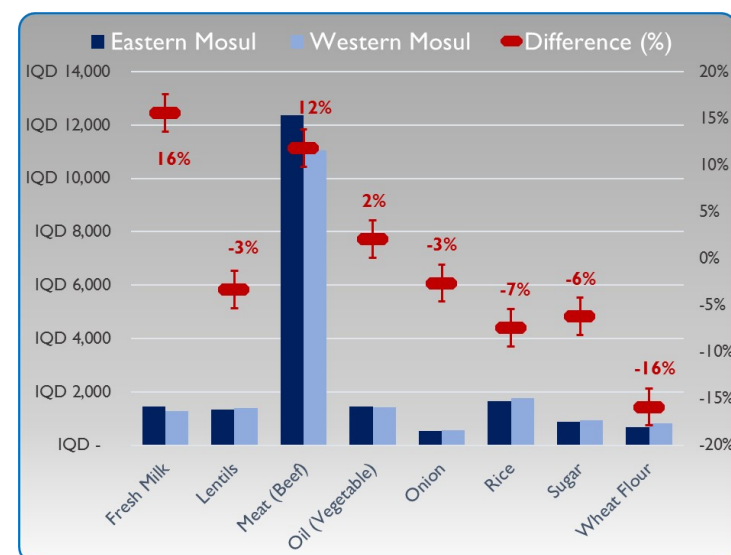
Prices are generally behaving similarly in the east and the west of Mosul (Figure 9). The only two foods that continue to be cheaper in the west are meat (16 percent cheaper) and fresh milk (12 percent cheaper). Overall, the food basket is cheaper in eastern Mosul (IQD678) than in western Mosul (IQD741) and cheaper than in the rest of Ninewa (IQD781).

Figure 8. Main food prices in Mosul vs. Ninewa governorate, February 2018



Commodity	Unit	Mosul		Ninewa (average)		Difference (%)	Relevance of difference
		Feb-18	Feb-18	Feb-18	Feb-18		(+/-5%)
Fresh Milk	l L	IQD	1,397	IQD	2,130	-34%	⬇️
Lentils	l Kg	IQD	1,364	IQD	1,620	-16%	⬇️
Meat (Beef)	l Kg	IQD	11,913	IQD	12,780	-7%	⬇️
Oil (Vegetable)	l L	IQD	1,434	IQD	1,500	-4%	⚖️
Onion	l Kg	IQD	539	IQD	620	-13%	⬇️
Rice	l Kg	IQD	1,688	IQD	1,710	-1%	⚖️
Sugar	l Kg	IQD	905	IQD	988	-8%	⬇️
Wheat Flour	l Kg	IQD	732	IQD	984	-26%	⬇️
Unskilled Labour	l Day	IQD	15,174	IQD	18,000	-16%	⬇️
Food Basket		IQD	699	IQD	781	-10%	⬇️
ToT		FB	21.70	FB	23.05	-6%	⬇️

Figure 9. Main food prices in eastern and western Mosul, February 2018



Commodity	Unit	Eastern Mosul	Western Mosul	Difference (%)	Relevance of difference
		Feb-18	Feb-18		(+/-5%)
Fresh Milk	l L	IQD 1,463	IQD 1,266	16%	⬆️
Lentils	l Kg	IQD 1,348	IQD 1,395	-3%	⚖️
Meat (Beef)	l Kg	IQD 12,352	IQD 11,048	12%	⬆️
Oil (Vegetable)	l L	IQD 1,443	IQD 1,415	2%	⚖️
Onion	l Kg	IQD 534	IQD 548	-3%	⚖️
Rice	l Kg	IQD 1,643	IQD 1,776	-7%	⬇️
Sugar	l Kg	IQD 885	IQD 944	-6%	⬇️
Wheat Flour	l Kg	IQD 688	IQD 818	-16%	⬇️
Unskilled Labour	l Day	IQD 16,754	IQD 12,065	39%	⬆️
Food Basket		IQD 678	IQD 741	-8%	⬇️
ToT		FB 24.71	FB 16.29	52%	⬆️



## Unskilled labour wages lower in Mosul than in rest of Ninewa

In February, unskilled labour wages were 16 percent lower in Mosul than in the rest of Ninewa. However, wages are gradually increasing in Mosul, rising 6 percent between December and February. Wage rates are 39 percent lower in the west than in the east of the city; consequently, the daily wages of an unskilled labourer could buy fewer food baskets in western Mosul (16) than in the eastern part of the city (24.7) (Figure 10).

Food availability was stable in February in both western and eastern Mosul except in Hay-Nablus in the west, where all monitored foods were widely available in January but mostly unavailable in February.

**Table 1. Food availability analysis – Mosul district, February 2018**

Commodity	Al-Qayara	Al-Shurah	Hay Al-Jamia	Hay Al-Zhur	Hay Al-Samah	Al-Qadisia alula	Al-Qadisia	Hay Al-Axaa	Hay Al-Amn	Hay Al-Qahira	Hay Al-Zaitun	Hay Al-Mshraq	Al-Qadisia althania	Muthna	Mosul Al-Jadida	Hay-Nablus	Hay-Alseha	Hay-Alskak	Al-Midan	Al-Rsala
table)	AV	AV	AV	AV	AV	AV	AV	AV	AV	AV	AV	AV	AV	AV	AV	MNA	AV	AV	AV	AV
	AV	AV	AV	AV	AV	AV	AV	AV	AV	AV	AV	AV	AV	AV	AV	MNA	AV	AV	AV	AV
	AV	AV	AV	AV	AV	AV	AV	AV	AV	AV	AV	AV	AV	AV	AV	MNA	AV	AV	AV	AV
our	AV	AV	AV	AV	AV	AV	AV	AV	AV	AV	AV	AV	AV	AV	AV	MNA	AV	AV	AV	AV

AV	Available
WAD	Widely Available
SAV	Sporadically Available
MNA	Mostly Not Available
NA	Not Available



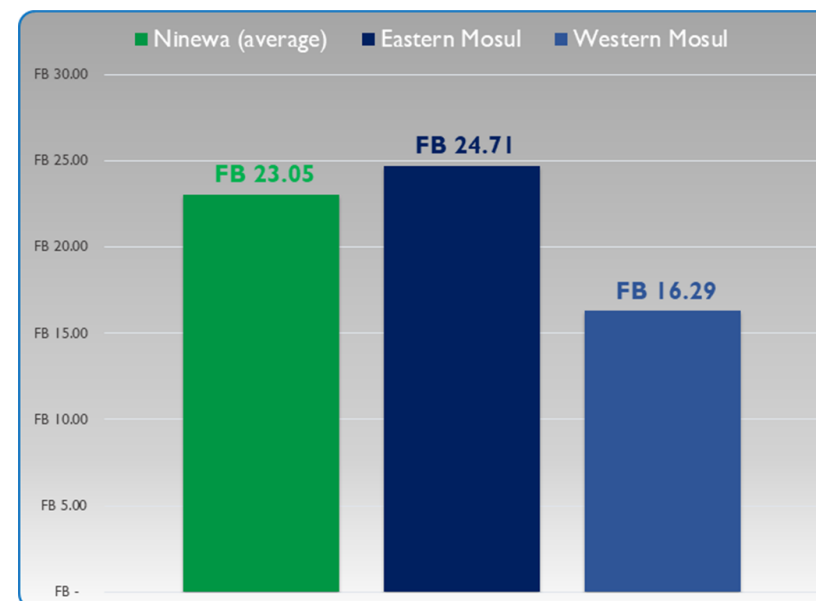
## For further information:

**Sally Haydock** sally.haydock@wfp.org  
**Arif Husain** arif.husain@wfp.org  
**Hazem Almahdy** hazem.almahdy@wfp.org  
**Asif Niazi** asif.niazi@wfp.org

## mVAM Resources:

**Website:** [http://vam.wfp.org/sites/mvam\\_monitoring/](http://vam.wfp.org/sites/mvam_monitoring/)  
**Blog:** [mvam.org](http://mvam.org)  
**Toolkit:** <http://resources.vam.wfp.org/mVAM>

**Figure 10. Wage-to-food terms of trade (in food baskets) in Mosul and in Ninewa governorate, February 2018**



Source: mVAM, IMST February 2018