



# Focus on conflict-affected groups in Ninewa, Diyala, and Sulaymaniyah



**vam**  
food security analysis

## mVAM IRAQ: UPDATE #18

APRIL 2018

### Key points:



In April, the share of households with borderline food consumption increased in Ninewa and among returnee households.



More families are relying on food-based coping strategies in Ninewa especially in Sinjar and Hamdaniya.



In Mosul food is largely available however, access to food is hampered by low purchasing power



WFP/Sally Haydock

### Situation Update

As of 30 April 2018, more than 3.7 million Iraqis have returned to their areas of origin, while over 2.1 million people continue to live in displacement, of which 1.5 million IDPs living outside of camps. The majority of displaced people are expected to return to their communities before the end of the year. Considering the pace and scale of returns of displaced population, Governorate Returns Committees (GRCs) for Anbar, Kirkuk and Salah al-Din have already been established in April with committees for Baghdad and Ninewa expected to be established soon. GRCs are composed of local authorities and at least four representatives from the humanitarian community, including UN agencies and NGOs. The objectives of the GRCs are to put in place a consultative mechanism that will ensure the returns of displaced people are voluntary, safe and dignified and to better address the needs of displaced people who continue living in camps by relocating them to camps with better services, with less protection violations and to which humanitarian actors have better access. GRCs will prioritize and consolidate camp lists while transition camps will remain open for families who are unable or do not wish to return to their areas of origin. Whereas the overall upward trend of returns continues, new and secondary displacements are being recorded. Since the beginning of the year, almost 27,000 secondary displaced people arrived back to camps in Mosul. Reasons for secondary displacement of families are limitations in shelter, basic services and livelihoods opportunities as well as security concerns.



**1546** households surveyed



**37** average age of respondents



**22%** IDPs

**37%** Returnees

**41%** Non IDPs



**56%** Own Home

**30%** Rental

**7%** Camp

**4%** Guest

**3%** Unfinished building



**94%** Male

**6%** Female

**24**

**Key informants called**

**19**

**Locations surveyed**



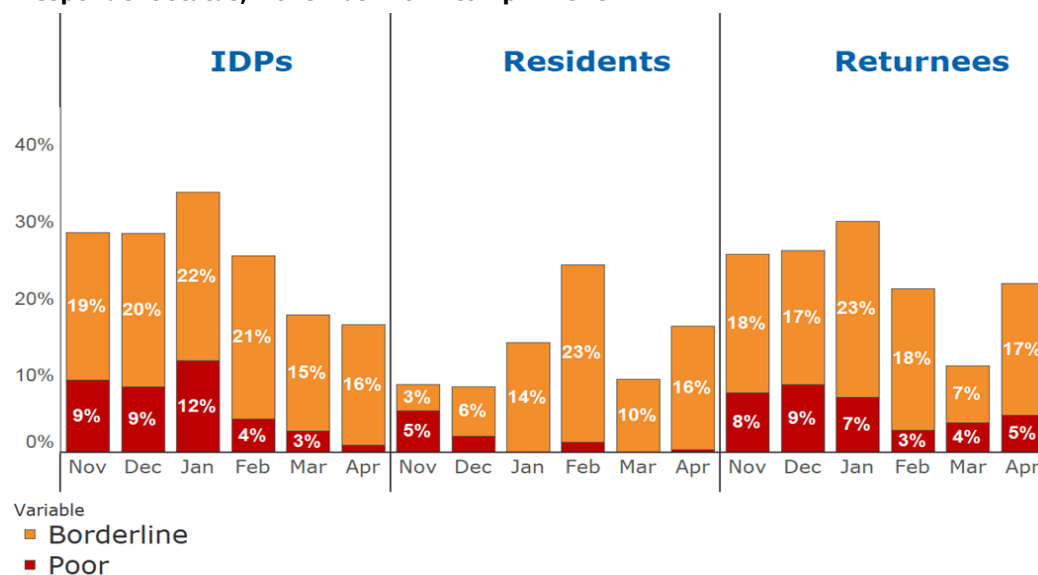
## Food consumption deteriorate among returnee households

In April, mVAM interviewed IDPs, returnees and resident households affected by the conflict in Diyala, Ninewa and Sulaymaniyah. In addition, mVAM interviewed resident households in Missan, Muthanna and Thi-Qar governorates that are expected to be affected by droughts.

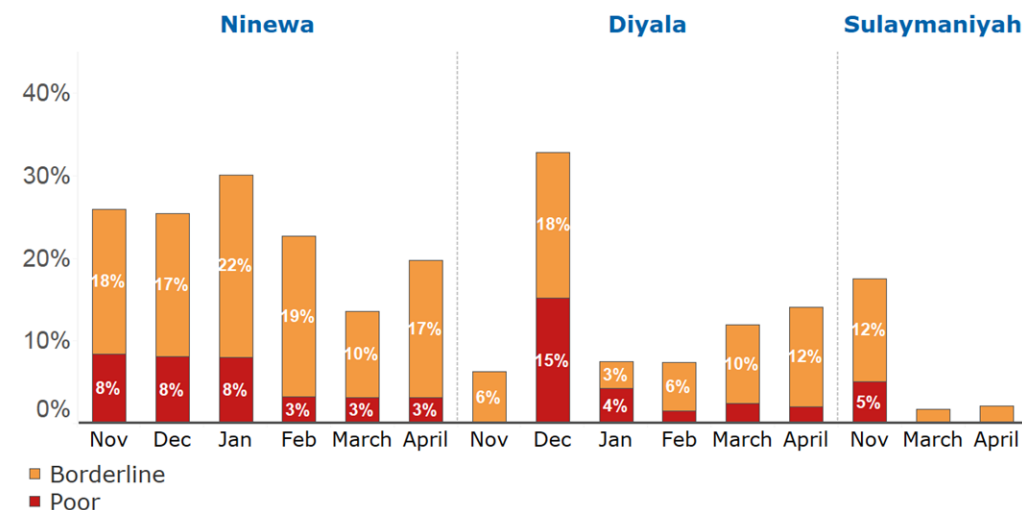
April mVAM data shows that the food consumption of households in Diyala and Sulaymaniyah remain unchanged since March 2018. In Ninewa, an increase from 10 percent in March to 17 percent in April of households reporting having a borderline food consumption was recorded (Figure 1).

In Ninewa, the share of households with inadequate food consumption increased from 13 percent in March to 20 percent in April. Inadequate food consumption increased particularly in Hamdaniyah and Telafar, driven by a rise in the percentage of households with borderline food consumption compared to March: from 3 percent in March to 14 percent in April in Hamdaniyah and from 6 percent in March to 21 percent in April in Telafar. On the other hand, in Mosul city, the share of households with borderline food consumption decreased from 26 percent in March to 17 percent in April. In Ninewa, changes have been noticed in the percentage of returnee households with borderline food consumption that increased from 7 percent in March to 17 percent in April (Figure 3).

**Figure 3. Households with inadequate food consumption in districts of Ninewa by respondent status, November 2017 to April 2018**

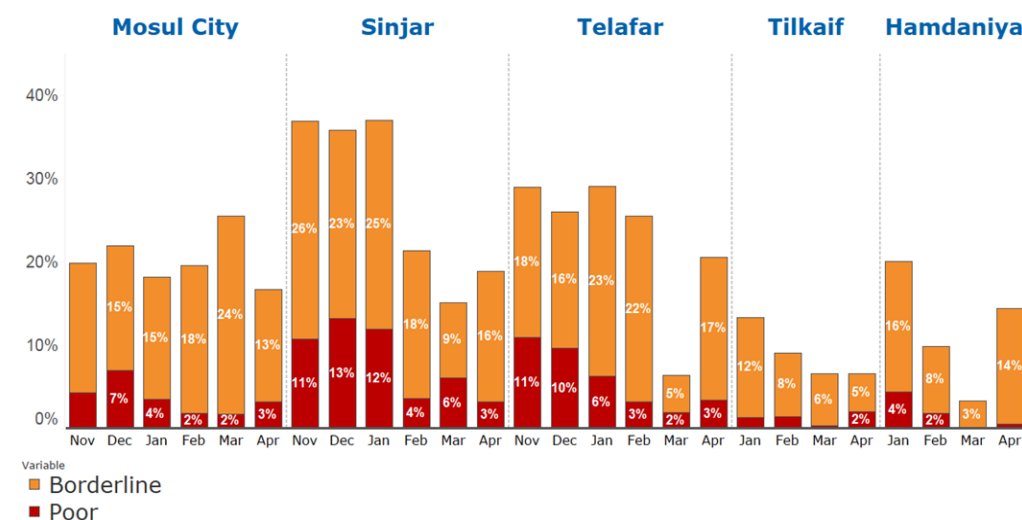


**Figure 1. Households with inadequate food consumption in surveyed governorates, November 2017 to April 2018**



\*Data not collected in Sulaymaniyah December 2018, January and February 2018.

**Figure 2. Households with inadequate food consumption in districts of Ninewa, November 2017 to April 2018**



\*Data not collected in Tilkaif and Hamdaniyah for November and December 2018



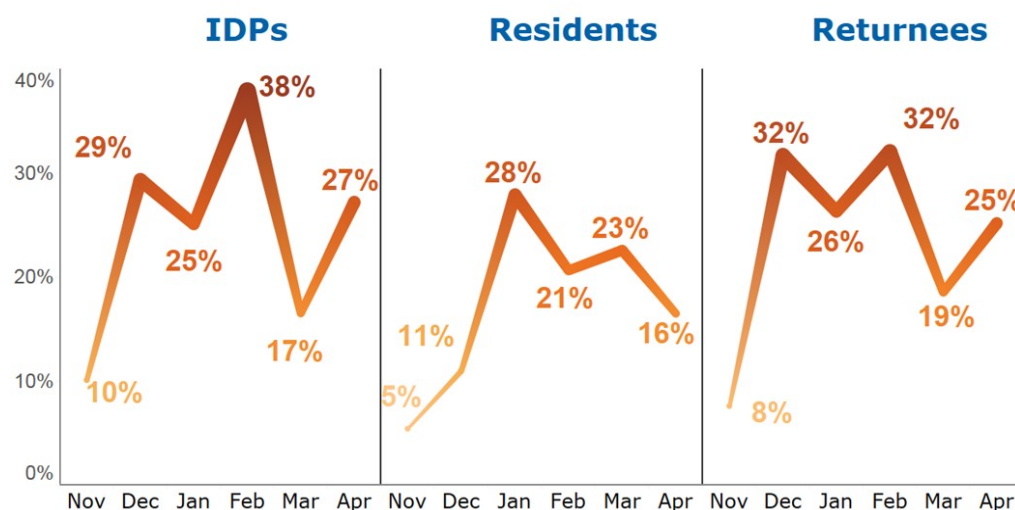
### Negative coping strategies increase in Ninewa but decrease in Mosul City

Surveyed households were asked if there were times in the seven days preceding the survey when they did not have enough food or money to buy food. The percentage of households who reported using food-related coping strategies increased in Ninewa from 18 to 25 percent and from 8 percent to 13 percent in Diyala. However, it dropped from 23 percent to 18 percent in Sulaymaniyah in April (Figure 4).

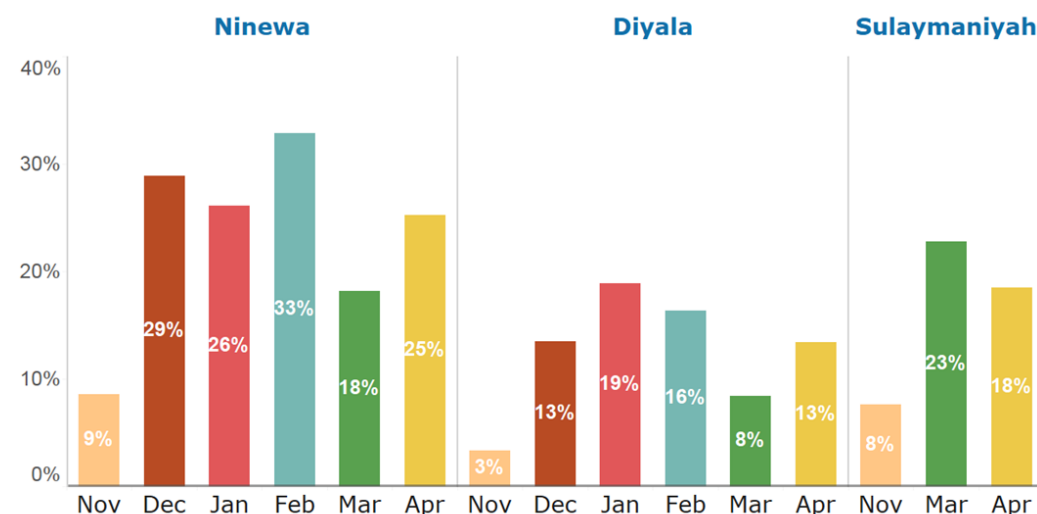
In Ninewa, the share of households who reported using food-related coping strategies increased in all the surveyed districts except for Mosul City where it dropped for the second consecutive month (Figure 5).

The use of negative coping strategies increased among IDPs and returnees in Ninewa while it decreased among resident households (Figure 6). In April, more IDP and returnee households reported having to buy less expensive or less preferred food, limiting portion sizes and/or number of meals per day and borrowing food.

**Figure 6. Percentage of households using food-based negative coping strategies in surveyed districts of Ninewa by respondent status, November 2017 to April 2018**

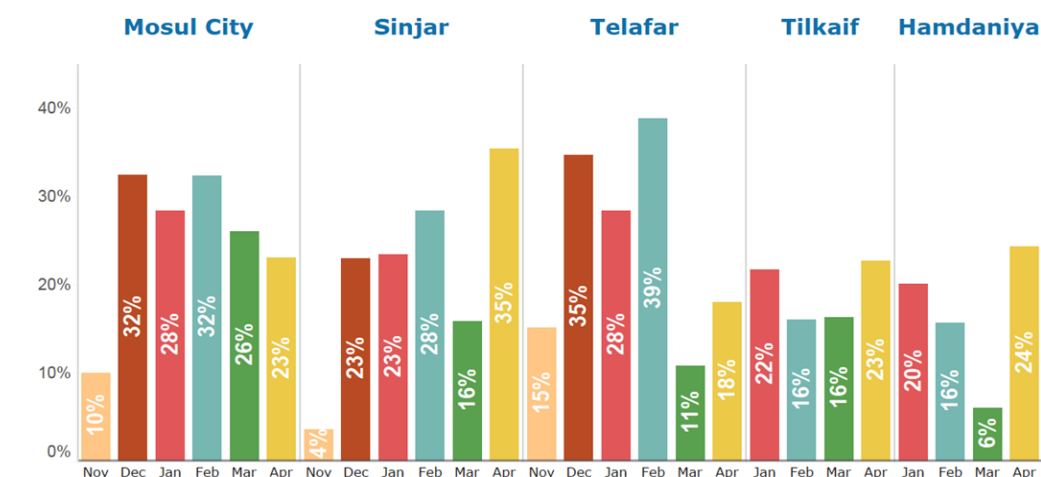


**Figure 4. Percentage of households using food-based negative coping strategies in surveyed governorates, November 2017 and April 2018**



\*Data not collected in Sulaymaniyah during December 2018, January and February 2018.

**Figure 5. Percentage of households using food-based negative coping strategies in surveyed districts of Ninewa, November 2017 to April 2018**



\*Data not collected in Tilkaif and Hamdaniya for November and December 2018



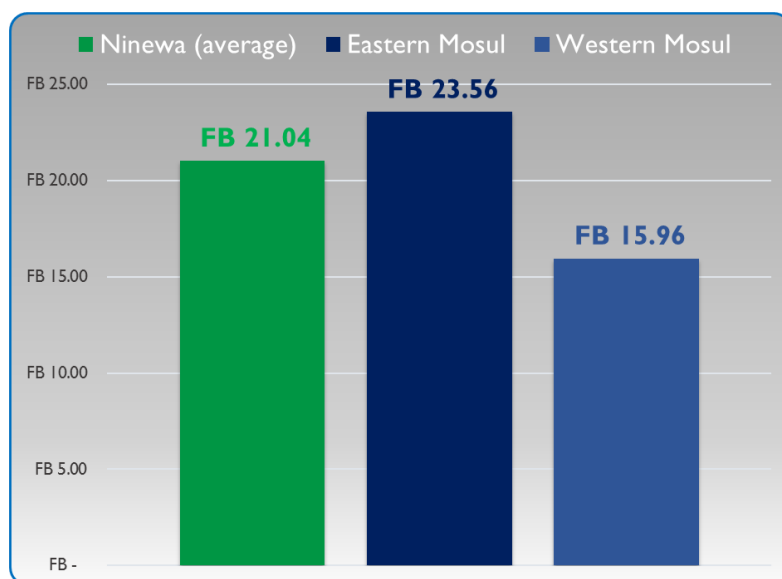
### Food is widely available in Mosul but purchasing power remain low

In April, the price of assessed food commodities in Mosul continued to be lower than the average in Ninewa governorate (Figure 8). In Mosul district, prices continue to decrease compared to the period following the retaking of the city and remain stable since last month. In particular, fresh milk was 17 percent cheaper and wheat flour was 25 percent cheaper in Mosul than elsewhere in the governorate. The average cost of a food basket was consequently 10 percent cheaper in Mosul (IQD706) than in the rest of Ninewa (IQD781).

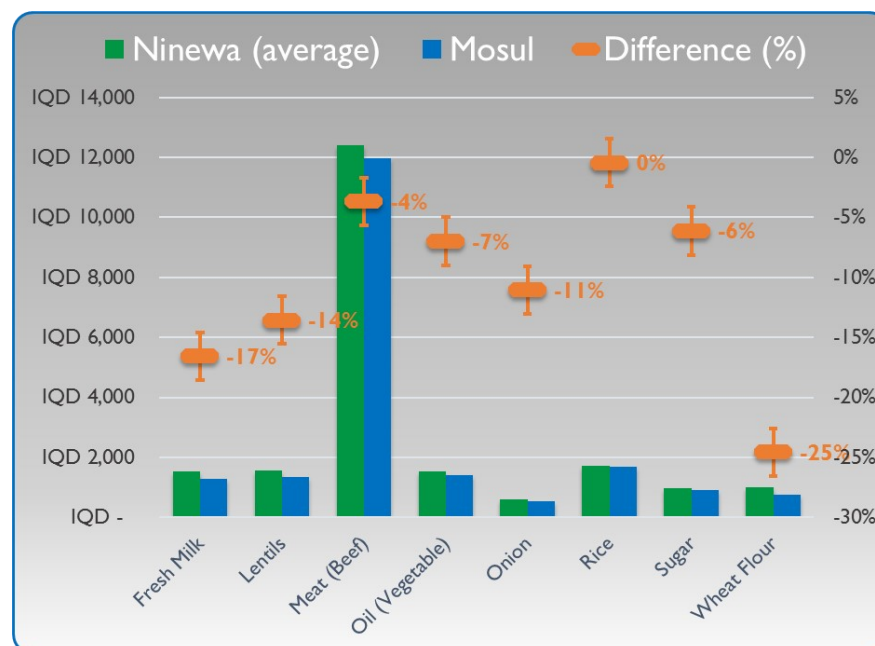
In April, unskilled labour wages were 11 percent lower in Mosul than in the rest of Ninewa. In April, the unskilled labour wages in western Mosul were 38 percent lower than in the east of the city. Consequently, the daily wages of an unskilled labourer could buy fewer food baskets in western Mosul (15.9) than in the eastern part of the city (23.5) (Figure 9). This suggests that despite goods being available at a lower price than governorate average prices, consumers in western Mosul may not have purchasing power to access them.

In April, prices were quite consistent across the marketplaces in both the east and the west of Mosul (Figure 10-page 5). However, meat and fresh milk continued to be cheaper in the west while rice, sugar and wheat flour were cheaper in the eastern part of the city. Overall, like in previous rounds of survey, the food basket was cheaper in eastern Mosul (IQD689) than in western Mosul (IQD736).

**Figure 9. Wage-to-food terms of trade (in food baskets) in Mosul and in Ninewa governorate, April 2018**



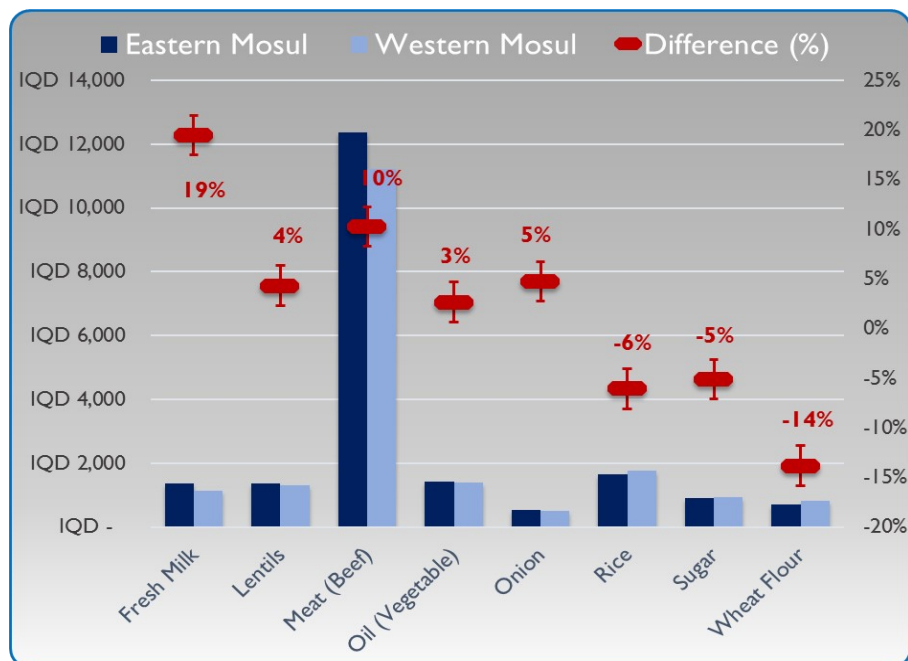
**Figure 8. Main food prices in Mosul vs. Ninewa governorate, April 2018**



Commodity	Unit	Mosul		Ninewa (average)		Difference (%)	Relevance of difference
		Apr-18		Apr-18			(+/-5%)
Fresh Milk	l L	IQD	1,286	IQD	1,542	-17%	↓
Lentils	l Kg	IQD	1,351	IQD	1,563	-14%	↓
Meat (Beef)	l Kg	IQD	11,961	IQD	12,417	-4%	↔
Oil (Vegetable)	l L	IQD	1,414	IQD	1,521	-7%	↓
Onion	l Kg	IQD	528	IQD	594	-11%	↓
Rice	l Kg	IQD	1,701	IQD	1,708	0%	↔
Sugar	l Kg	IQD	909	IQD	969	-6%	↓
Wheat Flour	l Kg	IQD	754	IQD	1,000	-25%	↓
Unskilled Labour	l Day	IQD	14,644	IQD	16,429	-11%	↓
Food Basket		IQD	706	IQD	781	-10%	↓
ToT		FB	20.74	FB	21.04	-1%	↔



Figure 10. Main food prices in eastern and western Mosul, April 2018



Commodity	Unit	Eastern Mosul	Western Mosul	Difference (%)	Relevance of difference
		Apr-18	Apr-18		(+/-5%)
Fresh Milk	l L	IQD 1,368	IQD 1,145	19%	⬆
Lentils	l Kg	IQD 1,371	IQD 1,314	4%	⬆
Meat (Beef)	l Kg	IQD 12,371	IQD 11,219	10%	⬆
Oil (Vegetable)	l L	IQD 1,428	IQD 1,391	3%	⬆
Onion	l Kg	IQD 537	IQD 513	5%	⬆
Rice	l Kg	IQD 1,663	IQD 1,770	-6%	⬆
Sugar	l Kg	IQD 892	IQD 941	-5%	⬆
Wheat Flour	l Kg	IQD 714	IQD 828	-14%	⬆
Unskilled Labour	l Day	IQD 16,241	IQD 11,750	38%	⬆
<b>Food Basket</b>		<b>IQD 689</b>	<b>IQD 736</b>	<b>-6%</b>	⬆
<b>ToT</b>		<b>FB 23.56</b>	<b>FB 15.96</b>	<b>48%</b>	⬆

Source: mVAM, IMST April 2018

### Methodology – mVAM remote data collection

In April 2018, mVAM conducted household food security monitoring using telephone interviews. Data was collected from 1546 respondents via Korek, a major mobile network operator, between 11 April and 10 May.

Using numbers drawn from Korek's database, WFP contacted respondents living in several locations in the governorates of Ninewa, Diyala, Sulaymaniyah, Missan, Thi-Qar and Muthanna. The data was weighted by the number of mobile phones owned by the household.

In addition, in collaboration with Islamic Relief Worldwide, key informant interviews were conducted, covering 12 locations in eastern Mosul and 7 locations in western Mosul.

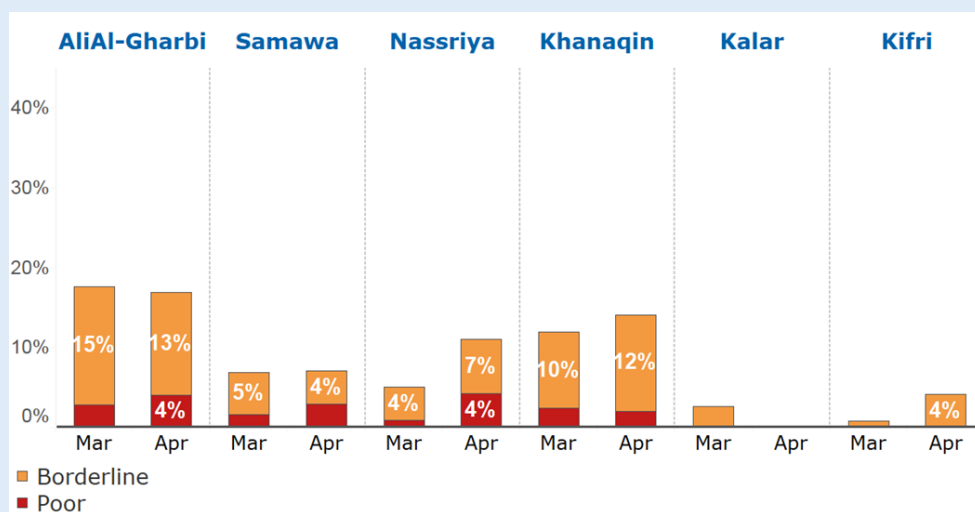


### Update on expected drought areas

In March, WFP started to collect information from households living in areas that are expected to be affected by droughts. In April, mVAM interviewed resident households in Khanaqin (Diyala), Kalar and Kifri (Sulaymaniyah), Samawa (Muthanna), Ali Al-Gharbi (Missan) and Nassriya (Thi-Qar).

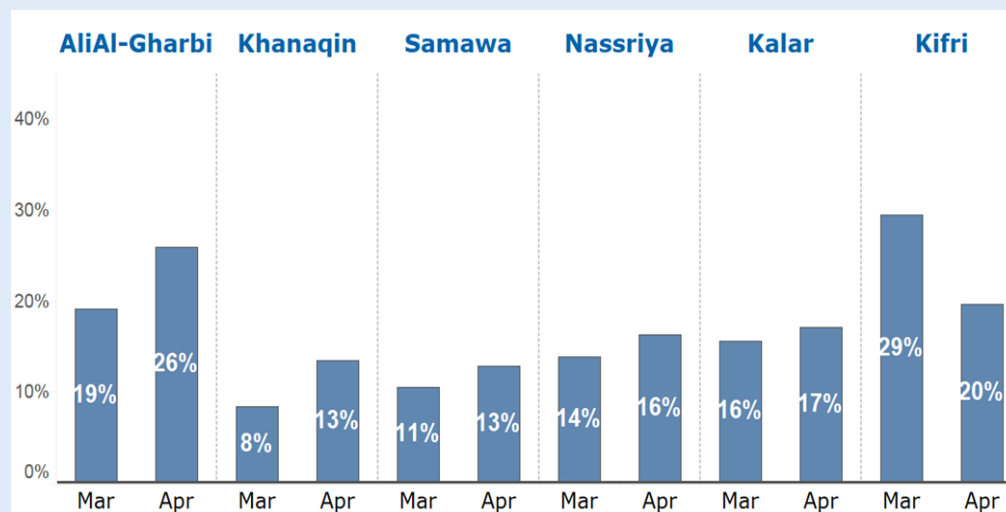
Planting of winter wheat and barley crops, for harvest from June 2018, was completed in early January and mixed production pattern for the 2018 winter cereal crops in Iraq are expected.

**Figure 11. Percentage of households with inadequate food consumption in expected drought areas, April 2018.**



Late and poor rains in parts of Iraq had a negative impact on still dormant or semi-dormant cereals. Beneficial precipitations in January improved soil moisture in northern Iraq, while soil moisture deficits are still significant in southern Iraq. Crop performance will depend on the quantity and quality of rains in the coming months. The conflict and lack of inputs continue to hamper agricultural activities in Iraq, with serious consequences in terms of planted area and yields.

**Figure 12. Percentage of households using food-based negative coping strategies in expected drought areas, April 2018**



**For further information:**

**Sally Haydock** sally.haydock@wfp.org  
**Arif Husain** arif.husain@wfp.org  
**Hazem Almahdy** hazem.almahdy@wfp.org  
**Asif Niazi** asif.niazi@wfp.org

#### mVAM Resources:

**Website:** [http://vam.wfp.org/sites/mvam\\_monitoring/](http://vam.wfp.org/sites/mvam_monitoring/)  
**Blog:** [mvam.org](http://mvam.org)  
**Toolkit:** <http://resources.vam.wfp.org/mVAM>



**vam**  
food security analysis