



mVAM Baseline Market Assessment

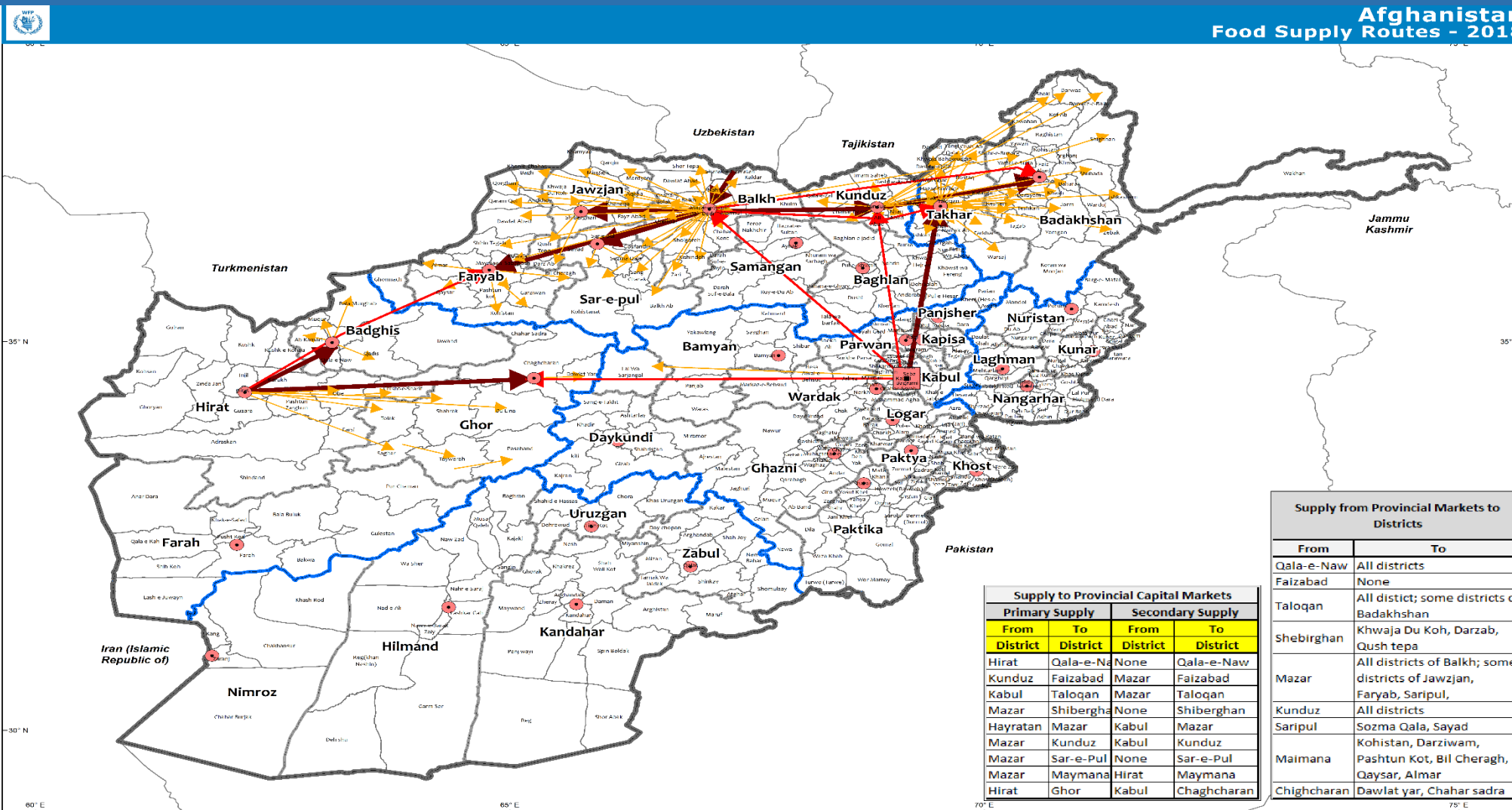


vam food security analysis
wfp.org

mVAM Afghanistan – Market Assessment and Food Supply Routes - Bulletin# 9

July 2018

Afghanistan Food Supply Routes - 2018

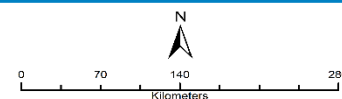


Supply from Provincial Markets to Districts	
From	To
Qala-e-Naw	All districts
Faizabad	None
Taloqan	All district; some districts of Badakhshan
Sheberghan	Khwaja Du Koh, Darzab, Qush tepa
Mazar	All districts of Balkh; some districts of Jawzjan, Faryab, Saripul,
Kunduz	All districts
Saripul	Sozma Qala, Sayad
Maimana	Kohistan, Darziwam, Pashtun Kot, Bil Cheragh, Qaysar, Almar
Chighcharan	Dawlat yar, Chahar sadra

Supply to Provincial Capital Markets			
Primary Supply		Secondary Supply	
From District	To District	From District	To District
Hirat	Qala-e-Naw	None	Qala-e-Naw
Kunduz	Faizabad	Mazar	Faizabad
Kabul	Taloqan	Mazar	Taloqan
Mazar	Shibergha	None	Shibergha
Hayratan	Mazar	Kabul	Mazar
Mazar	Kunduz	Kabul	Kunduz
Mazar	Sar-e-Pul	None	Sar-e-Pul
Mazar	Maymana	Hirat	Maymana
Hirat	Ghor	Kabul	Chaghcharan

Date Created: July 05, 2018.
 Contact: World Food Programme (WFP),
 CO Afghanistan (Wfp.Kabul@wfp.org)
 Prepared by: VAM/IGIS Unit, WFP Afghanistan.
 Map Reference:
 AFG_WFP_00VAM_FoodSupplyRoutes_A3L_20180705.mxd

- Administrative Boundary
- International
- Province
- WFP Office
- District
- Capital
- Province Center
- Primary Supply Routes (Province)
- Secondary Supply Routes (Province)
- Primary Supply Routes (District)



Data sources:
 GISY, GALI, VMAP, Program Unit (mVAM).
 The designations employed and the presentation of material in this map do not imply the expression of any opinion on the part of WFP concerning the legal or constitutional status of any country, territory, city or sea, or concerning the delimitation of its frontiers or boundaries.

ASSESSMENT METHODOLOGY

In June 2018, WFP mVAM conducted a market monitoring survey in 9 of the most drought-affected provinces (all located in Northern Afghanistan): Badghis, Faryab, Saripul, Jawzjan, Balkh, Takhar, Ghor, Kunduz, and Badakhshan. This survey will serve as a baseline to track how food prices, supply and trade routes evolve in these drought affected areas over the next 6 months – 1 year, in order to inform cash based humanitarian interventions. Three call operators based in WFP Kabul carried out a total of 326 key informant interviews, mainly with traders and Shura leaders (on average 36 interviews per province, covering about 11 districts per province, with about 3 interviews per district). The main objective of this assessment is map out the primary and secondary supply routes to the capital and district markets of the mentioned drought affected provinces as well as to collect current price information

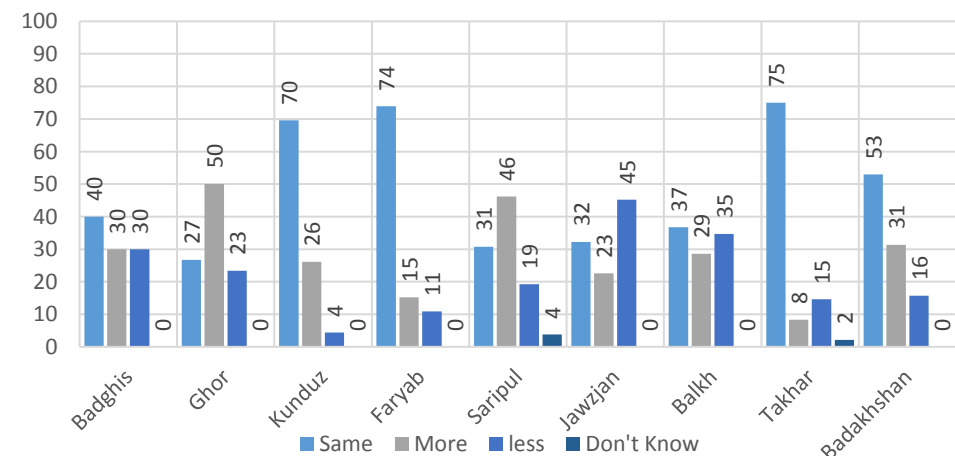
Key Findings:

- There are three main trading hubs which **supply** markets in northern Afghanistan: Mazar, Kabul and Herat. Mazar supplies the bulk of commodities in most of the assessed provinces, except Takhar which is mainly supplied by Kabul, and Badghis and Ghor which are mainly supplied from Herat. Kabul also serves as the secondary supply route to Balkh, Kunduz and Ghor. Most of the supplies (especially wheat flour and oil) in Mazar are imported from Uzbekistan, while much of supplies in Herat are imported from Iran and those in Kabul are imported from Pakistan.
- **Prices** are relatively stable compared to last year for wheat flour and wheat grain (although there have been some increases in wheat flour prices in Jawzjan, Sari Pul, Balkh and Badakhshan – mostly due to reduced imports via Uzbekistan). Rice prices, however, have increased in all assessed provinces.
- **Casual labour opportunities** are very limited (2-3 days/week) in both the agriculture and construction/ manufacturing sector, mainly due to impact of the drought on agricultural production compared to last year, as well as insecurity in remote areas and a slowdown of factory/ construction activities.

Food Supply:

- Supply of wheat flour (much of which is imported from Uzbekistan) has remained relatively stable across the assessed provinces, though it has decreased somewhat in some districts of Badghis, Ghor, Jawzjan and Balkh. Supply of wheat grains and rice, however (both of which are in large part locally produced in the assessed provinces) has decreased more significantly, especially in Sari Pul, Jawzjan and Balkh (for rice) and Badghis and Jawzjan (for wheat grains).

Figure 1: Current supply of Wheat Flour in the market this year compared to the same time last year:



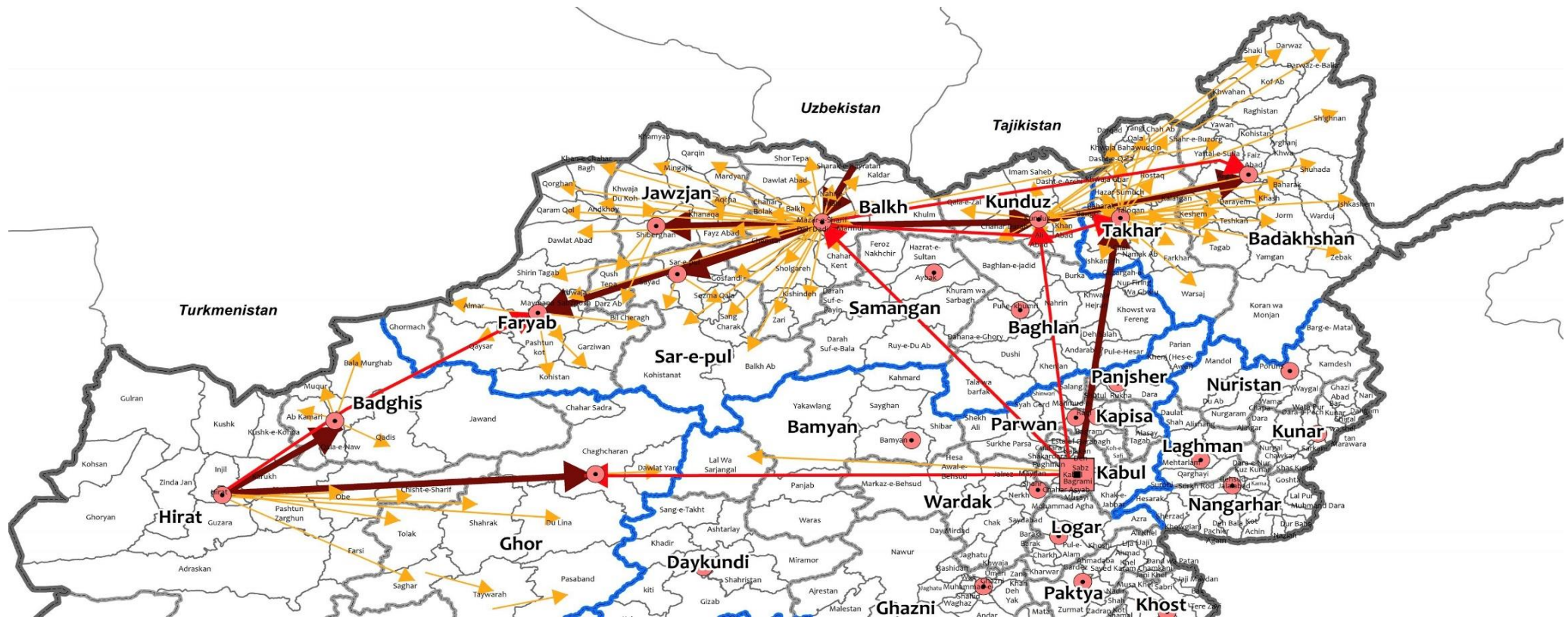


Figure 2: Focused version of Food Supply Routes Map – Primary Supply Routes (Province) — Secondary Supply Routes (Province) — Primary Supply Routes (District) —

Livelihood Opportunities:

Casual labour opportunities in all the nine assessed provinces are very limited with most people finding work only **2-3 days per week**. The daily wage rate for unskilled labour is highest in Takhar (**AFN 306**) followed by Kunduz, Badakhshan, Balkh, Faryab, Saripul and Ghor provinces. The lowest wage rate for unskilled labour was reported in Badghis and Jawazjan provinces (**AFN 223**) per day.

According to the traders, the main reason for limited availability of unskilled labour this year is drought, which has harshly affected the agricultural production that serves as the main income source for most of the population. Meanwhile, insecurity in remote areas and lack of industries and factories has shrunk casual labour opportunities

Food Prices:

The highest staple food prices among all the 9 provincial centres was reported for Sar-e-pul provincial market followed by Faizabad, Cheghcharan, Taloqan, Mazar, Maimana, Kunduz Center, Sheberghan and Qala-e-Naw provincial centre markets. The prices in Sar-e-Pul city are higher compared to last year due to decreased local food production, decreased food supply, volatility of exchange rate against US dollar and higher transportation costs. The respondents reported the same reasons for high food prices in all the other provincial markets.



Photo source: WFP/Wahidullah Amani

Figure 2: Current price of Wheat Flour in the market this year Compared to the same time last year:

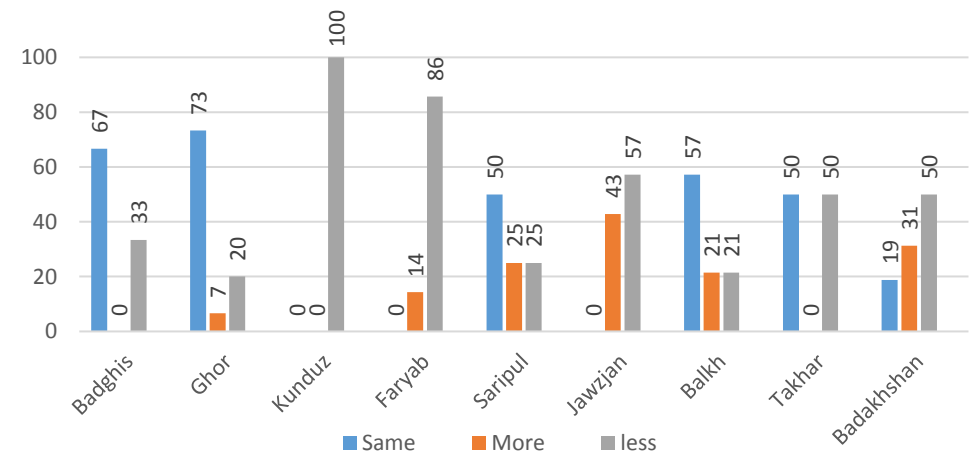


Photo source: WFP/Wahidullah Amani

Table-1: Current price of food commodities in districts of the assessed provinces:

Province Name	District Name	Rice -Low quality	Wheat Grain -Low Quality	Wheat Flour - Low Quality	Beef	Potatoes	Cooking oil	Bread
Badghis	Qala-e-Naw	33	22	23	240	18	71	10
	Ab Kamari	33	20	26	217	15	68	10
	Bala Morghab	38	20	22	210	16	70	10
	Muqur	40	20	24	250	15	70	10
	Qadis	40	22	23	223	15	72	10
Ghor	Chegh Cheran	54	23	24	255	21	72	10
	Dawlat Yar	40	20	24	270	20	75	10
	Du Lina	36	21	24	270	18	80	10
	Lal Wa Sarjangal	36	21	23	280	25	75	10
	Pasaband	43	22	25	260	21	73	10
	Saghar	43	24	22	233	19	75	10
	Shahrak	45	20	22	227	20	70	10
	Taywarah	44	23	25	237	21	73	10
Tolak	40	20	25	243	20	70	10	
Kunduz	Centre	42	20	24	254	18	68	9
	Ali Abad	40	20	22	270	17	60	9
	Chahar Darah	40	25	22	277	18	75	10
	Imam Saheb	35	18	23	250	18	70	10
	Khan Abad	40	18	23	260	19	70	10
	Qala-e-Zal	41	17	22	263	19	70	10
Faryab	Maimana	55	18	23	241	20	75	10
	Almar	60	19	21	247	19	78	10
	Andkhoy	41	18	23	243	20	72	10
	Bil Cheragh	44	20	23	233	20	72	10
	Dawlat Abad	43	21	24	217	25	68	10
	Garziwam	42	18	24	200	21	75	10
	Khan-e-Chahar Bagh	47	18	23	217	20	77	10
	Khwaja Sabzposh	46	18	22	227	21	77	10
	Kohistan	55	19	29	267	20	76	10
	Pashtun Kot	53	23	34	220	30	78	10
	Qaram Qol	40	19	23	210	20	73	10
	Qaysar	50	19	23	220	20	75	10
	Qorghhan	53	19	24	243	21	73	10
Shirin Tagab	49	20	23	237	20	69	10	
Sa-e-Pul	Balkh Ab	56	22	24	237	19	74	10
	Gosfandi	60	23	27	250	21	72	10
	Sangcharak	65	23	25	237	19	77	10
	Sozma Qala	50	25	25	250	21	75	10
	Kohistanat	55	23	21	200	18	72	10
	Sayad	54	22	25	200	19	73	9
Sar-e- Pul	49	20	24	270	19	80	9	
Jawzjan	Aqcha	50	22	25	277	23	68	9
	Khamyab	52	22	25	270	22	80	No sale
	Faizabad	50	23	21	267	22	83	10
	Khwaja Du Koh	48	19	23	270	17	72	9
	Qarqin	53	20	24	260	20	74	10
	Qush Tapa	50	24	25	237	19	70	10
	Darz Ab	53	20	26	180	20	72	10
	Khanaqa	65	20	22	250	20	70	10
Sheberghan	42	23	23	253	15	63	10	

Province Name	District Name	Rice -Low quality	Wheat Grain -Low Quality	Wheat Flour - Low Quality	Beef	Potatoes	Cooking Oil	Bread
Balkh	Mazar	49	20	22	250	18	70	10
	Chahar Bolak	48	17	22	273	20	74	10
	Chahar Kent	44	21	25	250	20	67	10
	Deh Dadi	55	19	24	273	20	70	10
	Balkh	43	19	23	250	19	66	10
	Chemtal	44	17	22	250	17	70	10
	Dawlat Abad	48	18	24	250	19	76	9
	Kaldar	43	19	24	247	16	68	10
	Khulm	44	18	22	287	17	68	10
	Kishindeh	50	18	23	267	22	68	10
	Marmul	50	19	21	247	25	70	No sale
	Nahr-e-Shahi	52	23	26	240	27	70	10
	Sholgarah	50	17	22	250	19	69	10
	Shor Tapa	52	16	21	253	16	67	10
Zari	50	19	24	230	20	68	10	
Takhar	Chah Ab	48	20	24	253	17	69	10
	Dasht-e- Qala	45	18	25	267	19	71	10
	Farkhar	47	19	24	273	21	76	10
	Ishakamish	52	18	22	260	18	77	10
	Kalafghan	52	18	22	270	17	82	10
	Khwaja Ghar	52	18	23	280	18	75	10
	Rostaq	45	18	20	267	20	79	9
	Namak Ab	45	17	22	250	24	75	10
	Yangi Qala	53	20	24	263	23	72	10
	Baharak	48	18	23	267	22	75	10
	Warsaj	45	19	26	270	19	72	10
	Bangi	53	17	28	270	19	75	10
	Chal	49	19	24	287	19	73	10
	Darqad	44	18	25	270	18	65	9
Taloqan	40	20	22	269	18	77	10	
Badakhshan	Yaftal-e-Sufla	50	21	24	237	18	77	10
	Zebak	49	23	26	247	21	71	10
	Jurm	58	22	24	233	27	82	10
	Keshem	50	18	25	240	28	80	10
	Khash	46	18	25	250	21	73	10
	Shahr-e-Buzurg	48	22	26	237	22	71	15
	Shakhi	50	21	23	250	21	70	12
	Shighnan	51	22	25	250	30	80	10
	Shuhada	55	24	25	230	26	80	10
	Tagab	46	20	25	233	20	71	10
	Teshkan	50	23	26	285	21	70	10
	Faizabad	50	22	24	263	17	80	10
	Baharak	45	23	25	250	18	90	10
	Darayem	45	23	24	233	19	91	10
	Darwaz	50	20	26	230	23	82	15
	Darwaz-e-Balla	44	21	22	250	30	95	10
Ishkeshem	53	21	22	230	30	100	10	

For further information:

eric.kenefick@wfp.org - masooma.said@wfp.org - sahar.sekandari@wfp.org

mVAM website: <http://vam.wfp.org/mvam>VAM website: vam.wfp.org