



Photo: WFP/Marwa Awad

Highlights

- As the general security situation stabilizes and more districts become accessible, food basket prices as well as the prices of core commodities tend to fall and converge to reach more stable, affordable and similar levels across governorates.

- Diesel prices have converged from having a 1,127 percent price gap between the cheapest and most expensive governorate in Syria in August 2017 to a 477 percent price gap in August 2018.

- Since February 2018, the wholesale price of wheat has decreased by eight percent while the prices of rice and bulgur have decreased by seven and three percent respectively.

- As the international Food Price Index stagnated and the Cereal Price Index increased by four percent m-o-m, the two indices are now at the same level at around 168 points. The price-level in Syria continues to be significantly higher than on the international market.

For further information please contact:

Jan Michiels Jan.Michiels@wfp.org
Dima Alhumsi Dima.Alhumsi@wfp.org

Standard Food Basket

The national average price of a standard food basket¹ decreased by two percent month-on-month (m-o-m) to SYP 23,432 in August 2018, which is in line with the year-on-year (y-o-y) downward trend (down 26 percent). This trend is influenced by the stabilisation of the security situation and improved accessibility. Prices in Deir-ez-Zor continue to fall (down 13 percent m-o-m and 49 percent y-o-y) while also prices in Quneitra show a decreasing trend (down 10 percent m-o-m) after the government of Syria regained control of the majority of south-western Syria.

Despite a two percent m-o-m increase, Al-Hasakeh continues to have the cheapest food basket at SYP 19,796 followed by As-Sweida at SYP 21,761 and Aleppo at SYP 22,445 (both down two percent).

The converging trend seen in Chart 1 is also reflected in Figure 1 showing fewer and smaller m-o-m price fluctuations. Five of the 14 governorates had stable food basket prices since July 2018. Dar'a and Tartous had price increases of four percent and Lattakia reported a decrease of four percent. The gap between the highest and lowest food basket price by governorate has fallen by 413 percent from SYP 26,873 to SYP 6,502 over the past 12 months.

All 14 governorates experienced an annual fall in food basket prices, varying from five percent in Dar'a to 49 percent in Deir-ez-Zor. The February-2018 prices (six months ago) were more varied, from 15 and 11 percent increases in Lattakia and Tartous respectively to a 15 percent decrease in Aleppo and 10 percent decrease, in Damascus and Idlib.

Chart 1: National min., max. and average cost of food basket, SYP

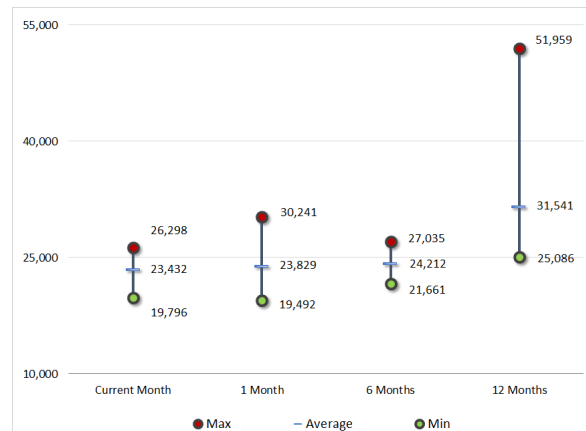
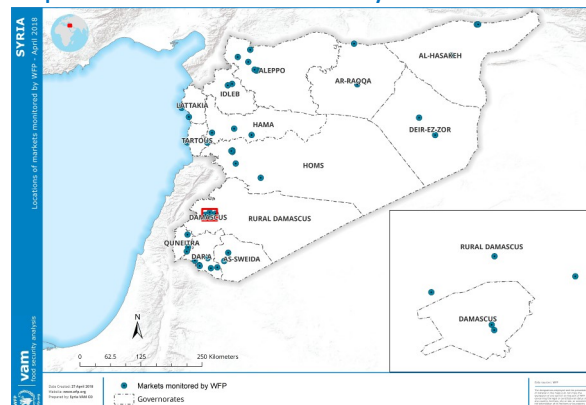


Figure 1: Food basket cost and changes, SYP

Governorate	Price July 2018	1 month change	6 months changes	12 months changes
Aleppo	SYP 22,445	-2%	-15%	-20%
Damascus	SYP 22,916	0%	-10%	-21%
Dar'a	SYP 25,754	4%	-5%	-5%
Deir-ez-Zor	SYP 26,298	-13%	3%	-49%
Hama	SYP 22,898	2%	1%	-27%
Al-Hasakeh	SYP 19,796	2%	-9%	-21%
Homs	SYP 22,923	0%	-3%	-19%
Idlib	SYP 22,741	0%	-10%	-32%
Lattakia	SYP 25,873	-4%	15%	-11%
Ar-Raqqa	SYP 23,357	0%	-2%	-12%
Rural Damascus	SYP 23,196	0%	-3%	-19%
As-Sweida	SYP 21,761	-2%	-9%	-31%
Tartous	SYP 24,948	4%	11%	-19%
Quneitra	SYP 23,142	-10%	-5%	-16%
Average	SYP 23,432	-2%	-3%	-26%

Map 1: Location of markets monitored by WFP



¹ The standard food basket is a group of essential food commodities. In Syria, the food basket is set at a group of dry goods providing 1,930 kcal a day for a family of five during a month. The basket includes 37 kg bread, 19 kg rice, 19 kg lentils, 5 kg of sugar, and 7 litres of vegetable oil. From August 2018, the price is adjusted according to the decrease in the size of the bread bundle sold across all governorates

Price variations across Syrian governorates

After more than seven years of conflict leading to large commodity price fluctuations across the country especially in previously besieged areas as well as in areas with limited accessibility, e.g. East Aleppo, Eastern Ghouta, Deir-ez-Zor and in opposition-held areas, prices now seem to be stabilising and converging.

Unskilled labour wage rates

The national mean wage for unskilled labour has increased during the past year from SYP 1,696 to SYP 2,067, equalling an increase of 21 percent. Contrary to the converging food basket price trend, the gap between salaries across governorates has become larger during the past year. Hence, the difference between the highest and lowest levels has developed from a 218 percent gap in August 2017 to a 285 percent gap in August 2018. As a consequence, unskilled workers in Tartous currently earn almost three times the daily wage of workers in Al-Hasakah, which has seen the lowest salary-level the past year. The highest salary-levels over the past 12 months have been reported in Tartous ranging between SYP 1,900-3,250 and Lattakia (SYP 2,000-3,000).

Livestock prices

Used as a proxy indicator of purchasing power for households relying on livestock as their main source of income, the price of a two-year-old male sheep has converged between governorates. In August 2017, a two-year old sheep was reported to be sold at an average of SYP 114,847, however, varying by 429 percent from the cheapest governorate (Ar-Raqqa) to the most expensive governorate (Deir-ez-Zor). The drop in the national average sales price by 16 percent y-o-y is mainly driven by a very large drop in Deir-ez-Zor where the current price is almost one-fifth of the price reported one year ago. In August 2018, the cheapest price of livestock was found in Deir-ez-Zor while the most expensive was in Tartous (Chart 3).

Diesel prices

The gap in the retail prices of diesel by governorate has drastically decreased over the past year, mainly due to a normalization of prices in Deir-ez-Zor from SYP 1,200/litre to SYP 213/litre, almost one-sixth of the conflict-level and closer to the national average. The gap between the minimum and maximum national average price has decreased from 1,127 percent to 477 percent. Despite the converging prices across governorates, diesel is still almost five times higher in Quneitra (SYP 358/litre) than in Ar-Raqqa (SYP 75/litre) - Chart 4.

Wheat flour prices

Overall, the mean national price of wheat flour has been stable since February 2018 at SYP 213-215/kg across governorates. However, in August 2017 the national average price for one kg of wheat flour was SYP 261/kg and the price was almost double in Deir-ez-Zor (SYP 400/kg) than in Quneitra (SYP 205/kg). The gap between the highest and lowest reported average price by governorate has now (August 2018) decreased to 152 percent, between Deir-ez-Zor (SYP 254/kg) and Dar'a (SYP 167/kg) respectively.

Chart 2: National min., max. and average of daily unskilled labour wages, SYP

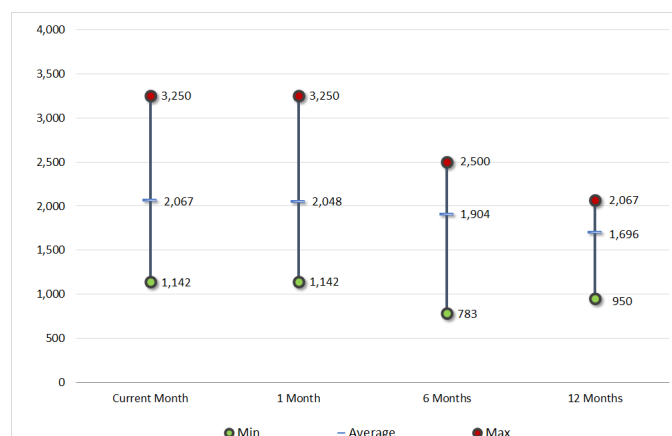


Chart 3: National min., max. and average of livestock prices, SYP/2Y old sheep

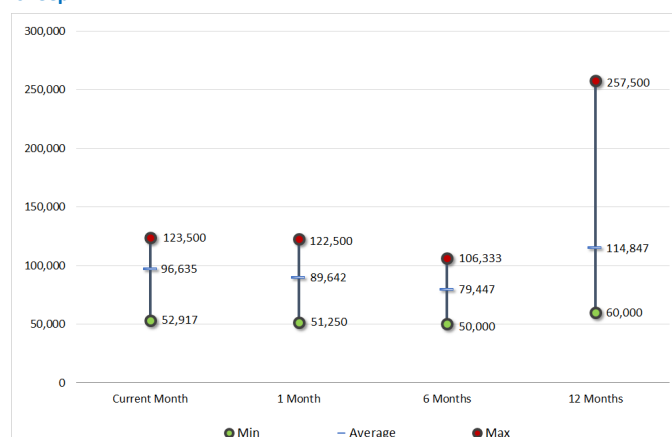


Chart 4: National min., max. and average of diesel prices, SYP/litre

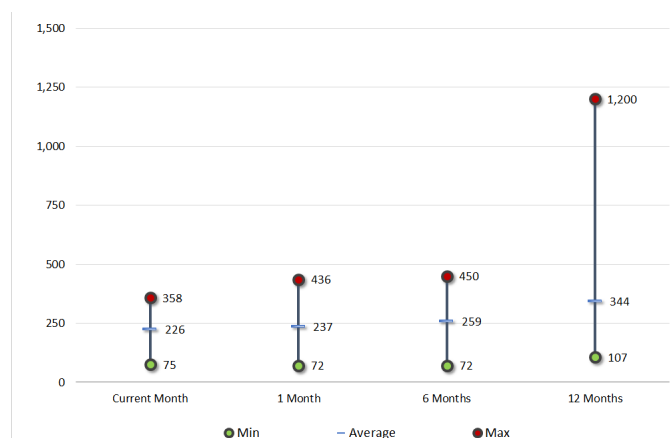


Chart 5: National min., max. and average of wheat flour prices, SYP/kg



Source: WFP Field Offices

Retail Prices

Retail prices of staple cereals

In August 2018, the national retail price of wheat flour across Syria's main markets was recorded at SYP 213/kg (remained stable), the price of rice was SYP 459/kg (up two percent m-o-m) while one kg of bulgur was sold at SYP 285 (down one percent m-o-m). The y-o-y trend has seen decreases of 18 percent, 13 percent and six percent for wheat flour, rice and bulgur respectively, while the price trend over the past six months has been more stable.

Hard-to-reach areas have faced the highest prices for all three commodities since start-2016 while the prices in Idleb have been below the national average for the entire period. Despite the high prices seen in hard-to-reach areas, the price of rice has fallen by more than 50 percent of the highest recorded level in April 2016 (SYP 1,240/kg) and fallen by 40 percent of the late-2016 and early-2017 levels for wheat flour and bulgur (Charts 6, 7 and 8).

At governorate level, Idleb faced the highest prices for basic commodities in August 2018 including both government subsidized and unsubsidized bread (SYP 200/bundle and SYP 225/bundle respectively), butane gas used for cooking (SYP 5,083/25k), and tomato (SYP 408/kg). In Lattakia, dates were sold at SYP 975/kg, lentils at SYP 550/kg and meat at SYP 4,750/kg which were the highest prices recorded in governorates across Syria for these commodities in August 2018.

Quneitra saw the lowest prices for chickpeas (SYP 311/kg), eggplant (SYP 96/kg), lentils (SYP 313/kg), milk (SYP 153/litre) and tomato (SYP 114/kg) while the price of oil was lowest in Al-Hasakeh at SYP 454 per litre in August 2018.

Bread

In August 2018, government subsidized bread was sold at an average of SYP 68/bundle across the Syrian markets following a m-o-m decrease of 16 percent which is the lowest price registered in the period since 2016 (Chart 9). In the same period, the price of commercial bread fell by three percent to SYP 138/bundle (Chart 10). In total, 12 governorates reported public bread price of SYP 75/bundle or below, eight of which had the standard sales price for government subsidized bread which is 50 SYP/bundle (1.3kg). Aleppo and previous opposition-held areas of Dar'a and Quneitra saw large drops in prices of subsidized bread at 42.2 percent, 41.9 percent and 34.8 percent m-o-m respectively.

With a six percent m-o-m fall, government-subsidized bread continues to be cheapest in accessible areas at SYP 55/bundle. This is followed by hard-to-reach areas where households can purchase bread at SYP 81/bundle. At SYP 200/bundle, Idleb faced the highest price across Syria in August 2018 despite being at the lowest level since late-2016 and down by 27 percent y-o-y.

Commercial bread could be purchased at SYP 120/bundle in accessible areas, SYP 192/bundle in hard-to-reach areas while the price was SYP 225/kg in Idleb. The average price in assessible areas have been stable since early-2017 with only small fluctuations and a 16 percent y-o-y increase. In hard-to-reach areas the current price level is up 10 percent since February 2018 and down two percent y-o-y. An annual comparison of average commercial bread price in Idleb shows that despite being stable at SYP 225/bundle

Chart 6: Retail Prices of Wheat Flour Retail, SYP

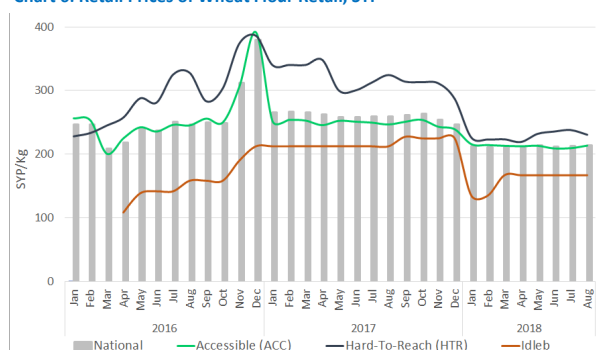


Chart 7: Retail Prices of Rice, SYP

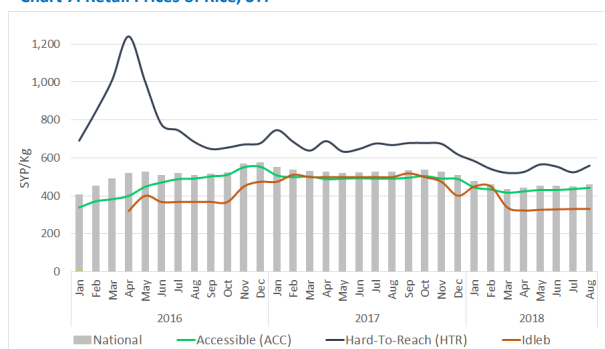


Chart 8: Retail Prices of Bulgur, SYP

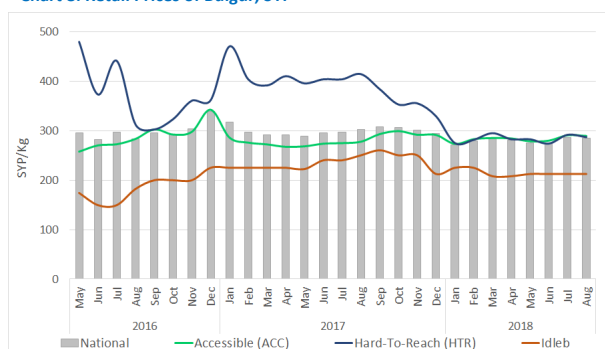


Chart 9: Retail Prices of Subsidized Bread, SYP

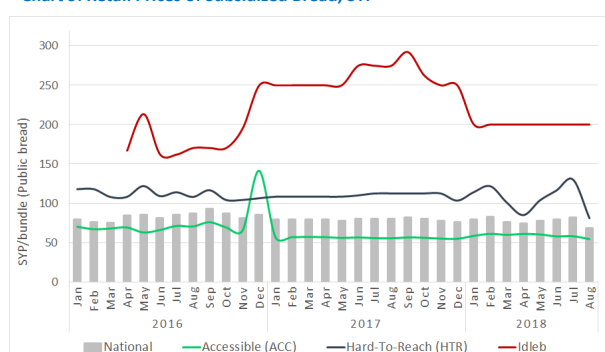
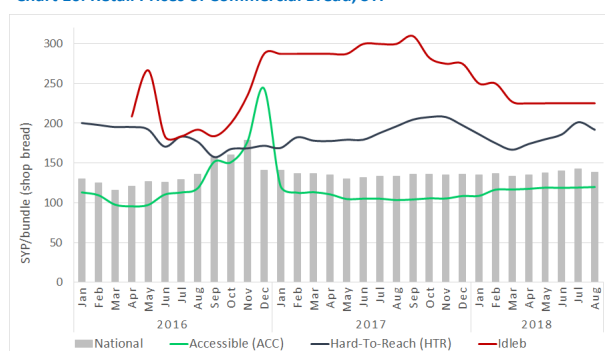


Chart 10: Retail Prices of Commercial Bread, SYP



Diesel and butane gas

In August 2018, the price of diesel decreased by four percent m-o-m to SYP 239/litre after three months reporting increasing prices. The price in assessable areas averaged SYP 238/litre (down two percent m-o-m), hard-to-reach areas saw an average price of SYP 251/litre after a nine percent m-o-m fall, while the price in Idleb was stable at SYP 214/litre (Chart 11).

The national average price of a butane gas cylinder refill was down nine percent m-o-m to SYP 3134/25k, equaling a y-o-y fall of 28 percent. This follows a general downward trend with m-o-m price decreases across all accessibility levels, from one percent in Idleb (5,083/25k), accessible areas down seven percent (to 2,891/25k) and an 18 percent decrease in hard-to-reach areas (to 3,518/25k).

At governorate level, Idleb saw the highest price of butane gas despite the price being down 49 percent since February 2018. Dar'a and Quneitra which until recently had cross-border areas saw similar large falls in prices of butane gas of 28 percent and 38 percent m-o-m respectively. The lowest price of SYP 2,700/25k of butane gas reported in Hama, Homs and As-Sweida (Chart 12).

Cereal wholesale prices

The Syrian average nominal wholesale price of cereal in August 2018 was SYP 201,760/MT for wheat grain (up 0.2 percent m-o-m), SYP 223,538/MT for bulgur (down 4.3 percent m-o-m) while rice was sold at SYP 367,657/MT (up 1.8 percent m-o-m).

Since February 2018, there was a price increase of eight percent for wheat grain while rice and bulgur prices are down by seven and three percent respectively.

Using the Syrian Central Bank's official exchange rate of SYP 434 to the US\$, this translates to US\$ 465/MT for wheat grain, US\$ 515/MT for bulgur grain and US\$ 847/MT for rice.

Exchange rates

The national average black market exchange rates increased by 0.9 percent since July 2018 to SYP 443/US \$ 1 compared to the official Central Bank rate which has remained at SYP 434 since December 2017 (Table 2).

After a large decrease of 5.2 percent from June to July 2018, the rate in Dar'a is moving towards the national average level after a 3.8 percent m-o-m increase to SYP 435/US \$ 1.

In August, Idleb reported the highest black-market exchange rate in Syria at SYP 452 (up 1.8 percent m-o-m). Also Ar-Raqqa, Quneitra and Hama saw price increases in the black market exchange rate of 1.4 percent, 1.2 percent and 0.9 percent respectively.

Only two governorates saw decreases in the exchange rate, namely As-Sweida which is down by 0.7 percent to SYP 437 and Damascus, down 0.2 percent.

Chart 11: Retail prices of diesel, SYP

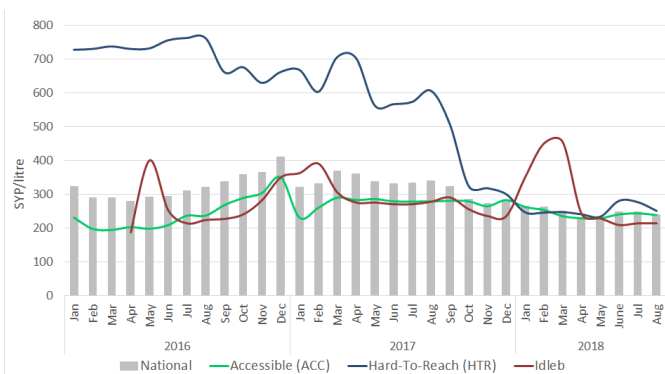


Chart 12: Retail prices of butane cylinder, SYP

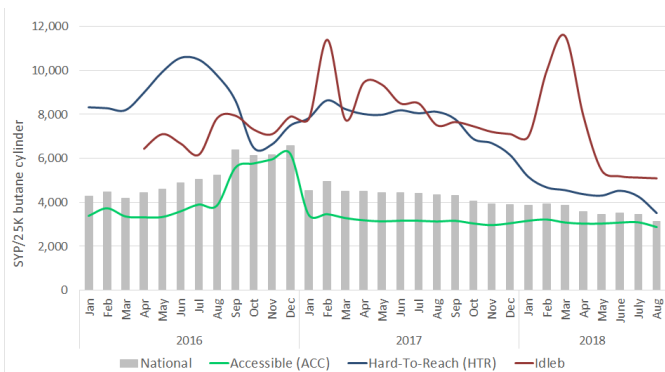


Table 1: National average wholesale prices for wheat, bulgur and rice, SYP and US\$ using official exchange rate, 1 MT

Commodity	June (SYP)	% change (m-o-m)	1MT in US\$
Wheat grain (1MT)	201,760	0.2	465
Bulgur grain (1MT)	223,538	-4.3	515
Rice (1MT)	367,657	1.8	847

Table 2: Black market exchange rate, 1 US \$ to SYP

Governorate	August 2018	% change (m-o-m)
Aleppo	443	0.6
Damascus	445	-0.2
Dar'a	435	3.8
Deir-ez-Zor	446	
Hama	442	0.9
Al-Hasakeh	446	1.1
Homs	440	0.5
Idleb	452	1.8
Lattakia	438	0.1
Quneitra	444	1.2
Ar-Raqqa	448	1.4
Rural Damascus	445	0
As-Sweida	437	-0.7
Tartous	446	0
National Average	443	0.9
Official Rate	434	0

Source: WFP Field Offices

Terms of Trade (ToT)²

ToT between sheep and wheat flour

As shown in Chart 13, the sales price of a two year-old male sheep increased by nine percent m-o-m from SYP 90,374/sheep in July to 98,657/sheep in August 2018. This is a continuation of an upward trend since February 2018 (up 19 percent) which is positively affecting the purchasing power of the households relying on sheep as their main source of income. Both hard-to-reach and accessible areas as well as Idleb governorate follow the positive trend, increasing by 23 percent, eight percent and one percent respectively over the same period.

The national average ToT between a two-year old male sheep and wheat flour was 462 kg/sheep which is nine percent higher m-o-m and up by two percent annually. Hereby showing that the price for a two-year old sheep increased compared to the price of wheat flour (Chart 14).

The ToT between wheat flour and sheep was highest in Idleb (509 kg/sheep) and accessible areas (up six percent to 479 kg/sheep), while it was lower than the national average in hard-to-reach areas at 383 kg/sheep (up 26 percent m-o-m).

The national average increased by two percent y-o-y, driven by an increase in Idleb and accessible areas of 37 percent and five percent respectively, while hard-to-reach areas are down 21 percent y-o-y.

ToT between wage labour and wheat flour

The national average daily wage for non-skilled workers increased by one percent from SYP 2,042 in July to 2,067 in August 2018 after a generally increasing trend of up to 21 percent y-o-y, mainly driven by increasing wages in accessible areas (up 21 percent).

As a result, a national average daily wage of an unskilled labourer could buy 9.7 kg of wheat flour in August 2018, representing a one percent increase m-o-m (Chart 15). After Idleb having been at the highest level from early 2016 until June 2018, accessible areas now have the highest purchasing power in relation to unskilled labour wages for the second month in a row at 9.8 kg/daily wage.

All accessibility levels have experienced y-o-y increases in ToT, varying from two percent in Idleb to 40 and 59 percent in accessible areas and hard-to-reach areas respectively.

International market prices

The Food Price Index averaged 167.6 points (up 0.2 percent) in August 2018 while the Cereal Price Index averaged 168.4 points (up 4.0 percent), closing the gap between the two indices that has been existing since January 2016 (Chart 16).

Meanwhile, the wholesale wheat grain price on local markets averaged US\$ 465/MT, down 0.2 percent m-o-m. In comparison, the wholesale price of wheat on international markets was US\$212/MT in August 2018.

Chart 13: Livestock, price of a two year-old male sheep, SYP

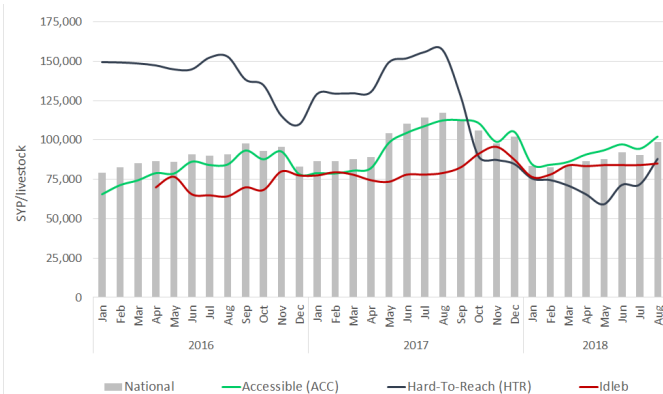


Chart 14: Terms of Trade (ToT) between wheat flour and the price of a 2Y old sheep

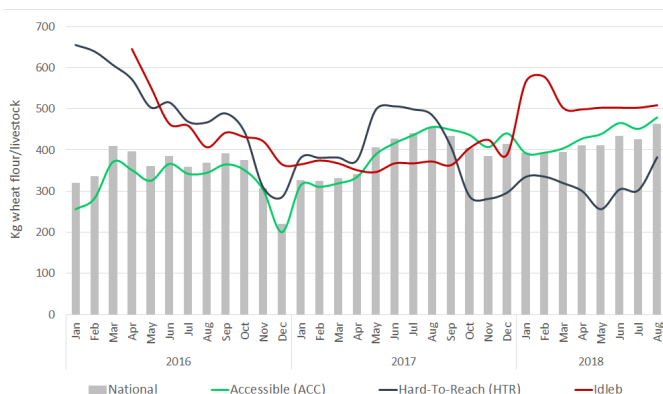
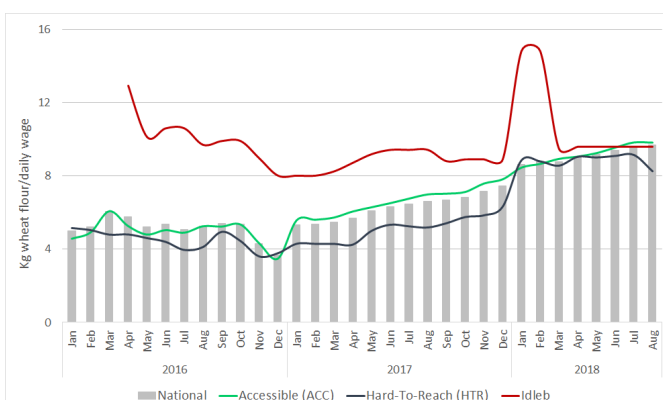
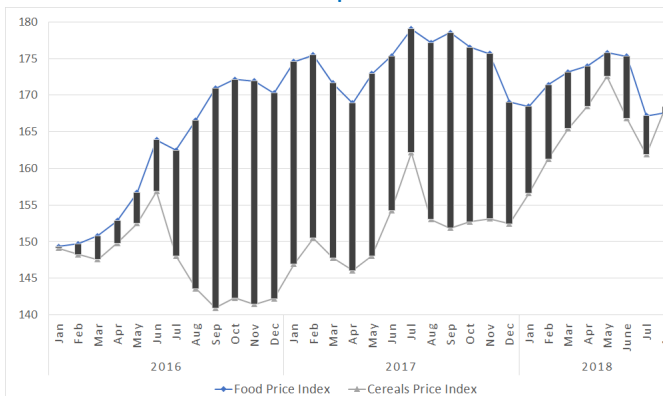


Chart 15: Terms of Trade (ToT) between wheat flour and wage labour



Source: WFP Field Offices

Chart 16: Trends of food and cereals price indices



Source: FAO

2. The ToT are proxy indicators of the purchasing power of households that rely on livestock and/or casual labour as their main source of income for the purchase of cereals from local markets. ToT are important components of food security analysis. Changes in the terms of trade between wages/livestock and staple food commodities are indicative of the trends in purchasing power and the impact on the food security situation of households dependent on food purchases through income from daily wage labour and/or the sale of livestock.

Table 3. Market Price of Main Commodities in Syrian Pounds: August 2018																		
Commodity	Governorate	Current Price	Price change	Price change	Price change	Average Change	Average Change	Average Change	Commodity	Governorate	Current Price	Price change	Price change	Price change	Average Change	Average Change	Average Change	
			1M (%)	6 M (%)	12 M (%)	1M	6 M	12 M				1M (%)	6 M (%)	12 M (%)	1M	6 M	12 M	
Bread Public (1.3 kg)	Aleppo	60	-42.2	-49.5	-45.5	↓	↓	↓	Date (kg)	Aleppo	903	6.3	8.8	-14.0	↑	↑	↓	
	Damascus	50	-	-	-	↔	↔	↔		Damascus	924	-1.4	1.8	-16.0	↓	↓	↓	
	Dar'a	74	-41.9	-35.8	48.0	↓	↓	↑		Dar'a	848	3.4	0.3	-26.3	↑	↑	↓	
	Deir-ez-Zor	100	-	-	-	↔	↔	↔		Deir-ez-Zor	867	-7.2	-3.7	-66.0	↓	↓	↓	
	Hama	50	-	-	-	↔	↔	↔		Hama	800	-	-5.9	-40.0	↔	↓	↓	
	Al-Hasakeh	50	-	-	-	↔	↔	↔		Al-Hasakeh	583	-2.1	-24.4	-41.7	↓	↓	↓	
	Homs	50	-	-	-	↔	↔	↔		Homs	800	-	-5.9	-41.5	↔	↓	↓	
	Idleb	200	-	-	-27.3	↔	↔	↓		Idleb	717	-	-15.7	-1.2	↔	↓	↓	
	Lattakia	50	-	-	-	↔	↔	↔		Lattakia	975	-	8.3	-23.5	↔	↓	↓	
	Quneitra	75	-34.8	-18.2	-	↓	↓	↔		Quneitra	864	-0.6	-3.9	-24.9	↓	↓	↓	
	Ar-Raqqa	65	-	-10.3	-42.2	↔	↓	↓		Ar-Raqqa	663	4.7	7.5	-39.8	↑	↑	↓	
	Rural Damascus	50	-	-	-	↔	↔	↔		Rural Damascus	742	-16.9	-14.4	-45.0	↓	↓	↓	
	As-Sweida	50	-	-	-	↔	↔	↔		As-Sweida	950	-	18.8	-29.6	↔	↑	↓	
	Tartous	50	-	-	-	↔	↔	↔		Tartous	900	2.9	-	-30.8	↑	↔	↓	
Bread Shops (1.3 kg)	Aleppo	175	-21.1	-3.7	-12.8	↓	↓	↓	Diesel (L)	Aleppo	293	10.3	8.6	-11.1	↑	↑	↓	
	Damascus	100	-	-	-2.4	↔	↔	↓		Damascus	203	2.5	-32.5	-32.5	↑	↓	↓	
	Dar'a	194	4.4	14.1	29.2	↑	↑	↑		Dar'a	301	-24.4	-2.7	2.9	↓	↓	↑	
	Deir-ez-Zor	225	-	12.5	5.9	↔	↑	↑		Deir-ez-Zor	213	-4.7	-9.0	-82.3	↓	↓	↓	
	Hama	75	-	-	2.3	↔	↔	↑		Hama	225	-	-	-40.0	↔	↔	↓	
	Al-Hasakeh	150	-	-	9.1	↔	↔	↑		Al-Hasakeh	86	-9.0	-14.9	-19.7	↓	↓	↓	
	Homs	75	-	-	-11.8	↔	↔	↓		Homs	225	-	-	2.3	↔	↔	↑	
	Idleb	225	-	-10.0	-25.0	↔	↓	↓		Idleb	214	-	-52.6	-23.1	↔	↓	↓	
	Lattakia	75	-	-	-	↔	↔	↔		Lattakia	200	-	-16.7	-33.3	↔	↓	↓	
	Quneitra	166	-8.5	-7.8	9.6	↓	↓	↑		Quneitra	358	-18.0	19.8	31.3	↓	↑	↑	
	Ar-Raqqa	125	-	-16.7	-12.3	↔	↓	↓		Ar-Raqqa	75	4.9	4.9	-59.5	↑	↑	↓	
	Rural Damascus	100	-	-	14.3	↔	↔	↑		Rural Damascus	206	1.0	-27.7	-36.6	↑	↓	↓	
	As-Sweida	100	-	-	33.3	↔	↔	↑		As-Sweida	350	-	-	6.1	↔	↔	↑	
	Tartous	113	7.1	80.0	80.0	↑	↑	↑		Tartous	213	-	-19.0	-29.2	↔	↓	↓	
Bulgur (kg)	Aleppo	249	1.1	2.2	5.3	↑	↑	↑	Dollar exchange rate (in the parallel market, \$1)	Aleppo	443	0.6	-4.5		↑	↓		
	Damascus	300	2.7	-0.8	-1.3	↑	↓	↓		Damascus	445	-0.2	-4.5		↓	↓		
	Dar'a	275	-4.0	-5.6	29.4	↓	↓	↑		Dar'a	435	3.8	-7.1		↑	↓		
	Deir-ez-Zor	317	-1.2	2.6	-54.8	↓	↑	↓		Deir-ez-Zor	446							
	Hama	325	-3.0	-4.4	14.7	↓	↓	↑		Hama	442	0.9	-4.0		↑	↓		
	Al-Hasakeh	234	2.0	9.9	-0.6	↑	↑	↓		Al-Hasakeh	446	1.1	-3.6		↑	↓		
	Homs	325	-3.0	-4.4	9.6	↓	↓	↑		Homs	440	0.5	-4.5		↑	↓		
	Idleb	213	-	-5.6	-15.0	↔	↓	↓		Idleb	452	1.8	-2.8		↑	↓		
	Lattakia	300	-	10.1	-	↔	↑	↔		Lattakia	438	0.1	-5.5		↑	↓		
	Quneitra	265	-7.1	16.4	8.2	↓	↑	↑		Quneitra	444	1.2	-4.1		↑	↓		
	Ar-Raqqa	275	1.5	13.9	-12.0	↑	↑	↓		Ar-Raqqa	448	1.4	-3.1		↑	↓		
	Rural Damascus	298	3.5	-4.8	-2.5	↑	↓	↓		Rural Damascus	445	-	-4.9		↔	↓		
	As-Sweida	325	8.3	18.2	8.3	↑	↑	↑		As-Sweida	437	-0.7	-6.5		↓	↓		
	Tartous	300	-	-	-6.0	↔	↔	↓		Tartous	446	-	-3.9		↔	↓		
Butane Cylinder (25 kg)	Aleppo	3,181	-7.8	-8.5	-5.4	↓	↓	↓	Eggs (carton)	Aleppo	1,094	23.2	10.0		↑	↑		
	Damascus	2,767	0.1	-	2.5	↑	↔	↓		Damascus	1,034	2.5	-4.6		↑	↓		
	Dar'a	3,050	-27.5	-46.5	-47.0	↓	↓	↓		Dar'a	1,040	6.2	15.4		↑	↑		
	Deir-ez-Zor	2,900	-2.0	4.8	-69.2	↓	↑	↓		Deir-ez-Zor	1,117	-5.0	-8.2		↓	↓		
	Hama	2,700	-	-4.7	-19.0	↔	↓	↓		Hama	1,200	2.9	24.6		↑	↑		
	Al-Hasakeh	2,267	-0.7	-2.2	-9.3	↓	↓	↓		Al-Hasakeh	1,017	2.1	-4.6		↑	↓		
	Homs	2,700	-	-1.2	2.5	↔	↓	↑		Homs	1,225	2.1	25.9		↑	↑		
	Idleb	5,083	-0.7	-49.2	-32.2	↓	↓	↓		Idleb	800	-	-5.9		↔	↓		
	Lattakia	2,900	-	1.8	-3.3	↔	↑	↓		Lattakia	1,263	8.6	12.2		↑	↑		
	Quneitra	3,567	-37.5	-35.1	-39.0	↓	↓	↓		Quneitra	1,042	13.6	-1.7		↑	↓		
	Ar-Raqqa	4,667	1.8	22.8	-45.1	↑	↑	↓		Ar-Raqqa	909	-1.8	-20.4		↓	↓		
	Rural Damascus	2,800	-	0.3	0.9	↔	↑	↑		Rural Damascus	1,075	11.2	13.6		↑	↑		
	As-Sweida	2,700	-	-	-6.9	↔	↔	↓		As-Sweida	1,025	2.5	-6.8		↑	↓		
	Tartous	2,900	-	-1.7	-3.3	↔	↓	↓		Tartous	1,275	14.6	22.9		↑	↑		
Cheese (kg)	Aleppo	1,428	8.8	4.8	-8.2	↑	↑	↓	Eggplant (1kg)	Aleppo	157	16.5	-47.8		↑	↓		
	Damascus	1,217	-2.0	-8.2	-5.5	↓	↓	↓		Damascus	179	-3.8	-18.3		↓	↓		
	Dar'a	1,040	14.5	2.1	-3.3	↑	↑	↓		Dar'a	125	-12.6	-56.0		↓	↓		
	Deir-ez-Zor	1,350	-3.3	-3.6	-46.0	↓	↓	↓		Deir-ez-Zor	200	3.1	-9.5		↑	↓		
	Hama	1,300	13.0	2.6	-12.4	↑	↑	↓		Hama	150	20.0	-41.9		↑	↓		
	Al-Hasakeh	1,050	0.8	-16.8	-12.5	↑	↓	↓		Al-Hasakeh	217	-2.0	-26.9		↓	↓		
	Homs	1,250	8.7	-5.1	-1.3	↑	↓	↓		Homs	125	-	-58.1		↔	↓		
	Idleb	1,050	-	-8.7	5.0	↔	↓	↑		Idleb	144	2.9	-62.8		↑	↓		
	Lattakia	1,188	1.1	-13.6	-15.2	↑	↓	↓		Lattakia	200	-	-5.9		↔	↓		
	Quneitra	1,150	7.7	-3.4	15.0	↑	↓	↑		Quneitra	96	-38.2	-53.7		↓	↓		
	Ar-Raqqa	1,150	0.7	-29.9	-20.7	↑	↓	↓		Ar-Raqqa	205	-3.8	-52.8		↓	↓		
	Rural Damascus	1,267	1.4	-	-6.2	↑	↔	↓		Rural Damascus	165	-2.9	-18.5		↓	↓		
	As-Sweida	1,450	-	7.4	3.6	↔	↑	↑		As-Sweida	150	-7.7	-37.0		↓	↓		
	Tartous	1,225	-	-2.0	-14.8	↔	↓	↓		Tartous	250	-	33.3		↔	↑		
Chickpeas (kg)	Aleppo	500	-6.9	11.2	6.7	↓	↑	↑	Fish (tuna, canned)	Aleppo	431	11.3	5.3	18.2	↑	↑	↑	
	Damascus	725	-	-1.2	3.6	↔	↓	↑		Damascus	463	0.4	-1.8	-	↑	↓	↔	
	Dar'a	402	4.2	-2.3	3.7	↑	↓	↑		Dar'a	405	18.0	10.2	-4.7	↑	↑	↓	
	Deir-ez-Zor	634	-5.0	1.4	-39.7	↓	↑	↓		Deir-ez-Zor	309	1.3	14.7	-62.6	↑	↑	↓	
	Hama	675	-18.2	-20.6	5.2	↓	↓	↑		Hama	400	9.1	3.9	-33.3	↑	↑	↓	
	Al-Hasakeh	450	-1.0	-13.9	-25.0	↓	↓	↓		Al-Hasakeh	359	-	5.0	-15.6	↔	↑	↓	
	Homs	600	-27.3	-30.0	2.9	↓	↓	↑		Homs	400	-	10.6	-13.7	↔	↑	↓	
	Idleb	379	-	-5.3	51.6	↔	↓	↑		Idleb	384	-	-4.1	18.0	↔	↓	↑	
	Lattakia	675	-	-	-10.0	↔	↔	↓		Lattakia	425	3.0	17.2	19.2	↑	↑	↑	
	Quneitra	311	-19.2	-19.6	-30.9	↓	↓	↓		Quneitra	335	-4.2	-4.7	-24.3	↓	↓	↓	
	Ar-Raqqa	417	-	-9.1	-30.6	↔	↓	↓		Ar-Raqqa	384	-	9.6	-19.3	↔	↑	↓	
	Rural Damascus	725	-	1.1	-6.5	↔	↑	↓		Rural Damascus	492	5.5	3.6	9.3	↑	↑	↑	
	As-Sweida	600	-	-7.7	-20.0	↔	↓	↓		As-Sweida	400	-	-5.9	-8.7	↔	↓	↓	
	Tartous	688	-0.9	10.0	-14.1	↓	↑	↓		Tartous	400	-	10.3	6.7	↔	↑	↑	
Key:	↑	Prices increase above normal price fluctuation																
	↔	Normal price fluctuation																
	↓	Price decrease below normal price fluctuation																

Commodity	Governorate	Current Price	Price change	Price change	Price change	Average Change	Average Change	Average Change	Commodity	Governorate	Current Price	Price change	Price change	Price change	Average Change	Average Change	Average Change
			1M (%)	6 M (%)	12 M (%)	1M	6 M	12 M				1M (%)	6 M (%)	12 M (%)	1M	6 M	12 M
Iodised salt (kg)	Aleppo	170	-1.4	0.7	-9.9	↓	↑	↓	Sheep 2Y old Male	Aleppo	87,988	-8.6	-14.3	-22.9	↓	↓	↓
	Damascus	113	-	-7.0	-10.0	↔	↔	↓		Damascus	105,417	0.9	27.8	-6.3	↑	↑	↓
	Dar'a	150	16.3	26.9	-	↑	↑	↔		Dar'a	115,875	71.2	62.9	7.8	↑	↑	↑
	Deir-ez-Zor	100	-	-	-82.2	↔	↔	↓		Deir-ez-Zor	52,917	3.3	5.8	-79.4	↑	↑	↓
	Hama	150	-	-	-9.1	↔	↔	↓		Hama	110,000	4.8	3.4	-43.6	↑	↑	↓
	Al-Hasakeh	100	-	-	-	↔	↔	↔		Al-Hasakeh	55,000	4.4	5.6	-21.4	↑	↑	↓
	Homs	150	-	-2.2	-14.3	↔	↓	↓		Homs	112,000	6.7	7.0	0.6	↑	↑	↑
	Idleb	84	-	-16.5	-16.5	↔	↓	↓		Idleb	85,000	1.2	9.0	7.6	↑	↑	↑
	Lattakia	115	-	15.0	4.5	↔	↑	↑		Lattakia	122,500	2.1	68.7	29.5	↑	↑	↑
	Quneitra	114	-0.6	14.0	8.6	↓	↑	↑		Quneitra	117,500	27.0	11.7	-2.1	↑	↑	↓
	Ar-Raqqa	100	-	-	-66.7	↔	↔	↓		Ar-Raqqa	62,500	2.7	4.2	4.2	↑	↑	↑
	Rural Damascus	102	-9.7	-1.9	-32.0	↓	↓	↓		Rural Damascus	105,188	3.6	30.4	-4.6	↑	↑	↓
	As-Sweida	150	-	-	-	↔	↔	↔		As-Sweida	97,500	6.8	27.5	13.2	↑	↑	↓
	Tartous	63	-	-30.6	-43.2	↔	↓	↓		Tartous	123,500	0.8	76.7	37.3	↑	↑	↑
	Lentils (kg)	Aleppo	344	1.3	-16.7	-24.5	↑	↓		↓	Sugar (kg)	Aleppo	229	-13.1	-23.6	-35.1	↓
Damascus		396	-0.3	-20.9	-39.8	↓	↓	↓	Damascus	241		0.4	-5.3	-33.5	↑	↓	↓
Dar'a		373	29.2	1.3	-24.7	↑	↑	↓	Dar'a	257		-6.9	-5.8	-27.6	↓	↓	↓
Deir-ez-Zor		400	-14.3	-2.1	-37.3	↓	↓	↓	Deir-ez-Zor	350		-19.6	9.0	-80.0	↓	↑	↓
Hama		400	-2.4	-11.8	-37.7	↓	↓	↓	Hama	225		-10.0	-11.2	-35.4	↓	↓	↓
Al-Hasakeh		300	-	-24.2	-29.4	↔	↓	↓	Al-Hasakeh	292		-	-4.1	-27.1	↔	↓	↓
Homs		450	9.8	-2.9	-19.2	↑	↓	↓	Homs	230		-8.0	-8.0	-33.3	↓	↓	↓
Idleb		317	-	5.7	-36.6	↔	↑	↓	Idleb	317		-	3.8	-29.7	↔	↑	↓
Lattakia		550	-8.3	57.1	-10.9	↓	↑	↓	Lattakia	250		-	-	-32.9	↔	↔	↓
Quneitra		313	-1.6	1.4	-30.5	↓	↑	↓	Quneitra	235		-10.6	-11.1	-39.4	↓	↓	↓
Ar-Raqqa		375	1.1	-8.2	-48.3	↑	↑	↓	Ar-Raqqa	304		-	1.2	-39.3	↔	↑	↓
Rural Damascus		409	-	-3.9	-30.5	↔	↓	↓	Rural Damascus	245		1.4	-3.7	-27.4	↑	↓	↓
As-Sweida		538	-2.3	-10.4	-37.7	↓	↓	↓	As-Sweida	235		-9.6	-12.6	-33.4	↓	↓	↓
Tartous		475	15.2	18.8	-22.4	↑	↑	↓	Tartous	238		-3.1	-9.5	-39.7	↓	↓	↓
Meat (beef, kg)		Aleppo	3,538	4.8	10.1	9.3	↑	↑	↑	Tomato (kg)		Aleppo	181	20.8	-29.0	23.3	↑
	Damascus	4,050	0.3	2.7	-4.7	↑	↑	↓	Damascus		171	3.0	-22.0	51.6	↑	↓	↑
	Dar'a	3,560	2.8	1.7	-11.0	↑	↑	↓	Dar'a		120	3.4	-59.0	60.0	↓	↓	↑
	Deir-ez-Zor	3,258	-1.3	13.7	-59.8	↓	↑	↓	Deir-ez-Zor		225	-	-14.3	-82.7	↔	↓	↓
	Hama	3,500	-7.9	-8.7	-11.0	↓	↓	↓	Hama		225	28.6	-14.6	31.1	↑	↓	↑
	Al-Hasakeh	3,034	-	4.6	-12.1	↔	↑	↓	Al-Hasakeh		204	-4.9	-19.8	31.6	↓	↓	↑
	Homs	3,700	-2.6	-5.1	-17.8	↓	↓	↓	Homs		175	-	-27.1	-9.5	↔	↓	↓
	Idleb	2,450	-	8.9	-9.3	↔	↑	↓	Idleb		408	-	-32.0	-18.4	↔	↓	↓
	Lattakia	4,750	-0.5	31.9	15.2	↓	↑	↑	Lattakia		188	7.1	-24.2	78.6	↑	↓	↓
	Quneitra	3,581	9.3	-0.4	5.3	↑	↓	↑	Quneitra		114	-30.8	-54.6	38.6	↓	↓	↑
	Ar-Raqqa	2,500	-	5.6	-10.7	↔	↑	↓	Ar-Raqqa		227	-1.9	-26.6	0.7	↓	↓	↑
	Rural Damascus	3,875	0.6	8.6	-12.9	↑	↑	↓	Rural Damascus		159	6.0	-27.5	58.5	↑	↓	↑
	As-Sweida	4,000	-	-	-	↔	↔	↔	As-Sweida		200	-	-27.3	90.5	↔	↓	↑
	Tartous	4,450	0.6	27.1	11.3	↑	↑	↑	Tartous		200	-	-23.8	25.0	↔	↓	↑
	Milk (L)	Aleppo	221	-8.3	-13.9	-	↓	↓	↓		Unskilled Labor-wage	Aleppo	2,500	-	5.3	25.0	↔
Damascus		255	-2.9	-5.2	-	↓	↓	↓	Damascus	2,000		-	-	25.0	↔	↔	↑
Dar'a		203	-2.9	-5.3	-	↓	↓	↓	Dar'a	1,393		-1.7	4.5	7.2	↓	↑	↑
Deir-ez-Zor		250	-9.1	-16.7	-	↓	↓	↓	Deir-ez-Zor	1,800		-	-	56.5	↔	↔	↑
Hama		265	28.2	17.8	-	↑	↑	↓	Hama	2,000		-	-	-3.2	↔	↔	↓
Al-Hasakeh		259	-	-12.7	-	↔	↓	↓	Al-Hasakeh	1,142		-	45.8	20.2	↔	↑	↑
Homs		225	12.5	10.7	-	↑	↑	↓	Homs	2,000		-	-	9.1	↔	↔	↑
Idleb		167	-	-29.7	-	↔	↓	↓	Idleb	1,600		-	-20.0	-20.0	↔	↓	↓
Lattakia		250	-	-	-	↔	↔	↓	Lattakia	3,000		-	20.0	50.0	↔	↑	↑
Quneitra		153	-3.2	-11.9	-	↓	↓	↓	Quneitra	1,833		10.0	26.0	35.8	↑	↑	↑
Ar-Raqqa		213	-	-15.8	-	↔	↓	↓	Ar-Raqqa	2,417		-	12.0	27.2	↔	↑	↑
Rural Damascus		254	-	-7.6	-	↔	↓	↓	Rural Damascus	2,000		-	-	17.6	↔	↔	↑
As-Sweida		225	-	-10.0	-	↔	↓	↓	As-Sweida	2,000		6.7	-	-	↑	↔	↔
Tartous		238	-5.0	-5.0	-	↓	↓	↓	Tartous	3,250		-	44.4	71.1	↔	↑	↑
Oil (L)		Aleppo	594	8.0	-8.7	-10.0	↑	↓	↓	Wheat Flour (kg)		Aleppo	213	5.9	-5.6	-10.1	↑
	Damascus	625	-0.5	-3.8	-16.7	↓	↓	↓	Damascus		208	-0.2	-3.3	-26.4	↓	↓	↓
	Dar'a	633	-1.3	-3.7	-12.7	↓	↓	↓	Dar'a		194	-6.1	-5.6	-7.7	↓	↓	↓
	Deir-ez-Zor	567	-18.5	2.3	-71.7	↓	↑	↓	Deir-ez-Zor		254	-7.6	1.6	-36.5	↓	↑	↓
	Hama	600	-4.0	-2.2	-22.6	↓	↓	↓	Hama		200	-	3.4	-22.1	↔	↑	↓
	Al-Hasakeh	454	0.9	-5.3	-17.5	↑	↓	↓	Al-Hasakeh		219	-3.5	2.1	-2.7	↓	↑	↓
	Homs	600	-4.0	-3.0	-19.1	↓	↓	↓	Homs		200	-	-	-21.1	↔	↔	↓
	Idleb	456	-	-17.1	-25.6	↔	↓	↓	Idleb		167	-	23.7	-21.4	↔	↑	↓
	Lattakia	600	-	-7.7	-10.3	↔	↓	↓	Lattakia		250	-	4.2	5.3	↔	↑	↑
	Quneitra	583	-10.4	-10.5	-26.0	↓	↓	↓	Quneitra		228	13.6	17.7	11.4	↑	↑	↑
	Ar-Raqqa	492	0.4	-3.3	-45.4	↑	↓	↓	Ar-Raqqa		242	0.8	-12.2	-33.4	↑	↑	↓
	Rural Damascus	612	-4.0	-5.8	-18.4	↓	↓	↓	Rural Damascus		204	-	-1.9	-21.5	↔	↓	↓
	As-Sweida	600	-	-6.0	-25.0	↔	↓	↓	As-Sweida		225	-	-	-14.4	↔	↔	↓
	Tartous	613	-3.9	-2.0	-16.9	↓	↓	↓	Tartous		210	3.7	5.0	-13.9	↑	↑	↓
	Parsley (packet)	Aleppo	48	19.9	24.5	14.9	↑	↑	↑		White beans (kg)	Aleppo	450	-11.1	-17.2	-7.7	↓
Damascus		35	-	-20.5	-10.3	↔	↓	↓	Damascus	579		-0.1	3.7	21.9	↔	↑	↑
Dar'a		90	-4.3	4.4	20.0	↓	↑	↓	Dar'a	313		-20.5	-7.2	-26.5	↓	↓	↓
Deir-ez-Zor		83	5.1	24.8	-44.7	↑	↑	↓	Deir-ez-Zor	675		-6.4	-1.2	-32.5	↓	↓	↓
Hama		50	-	-	-6.3	↓	↔	↓	Hama	650		13.0	23.4	12.1	↑	↑	↓
Al-Hasakeh		98	-2.0	62.0	30.7	↓	↑	↑	Al-Hasakeh	525		-2.3	4.2	-4.5	↓	↑	↓
Homs		50	-	-	-	↔	↔	↔	Homs	625		8.7	18.3	-3.8	↑	↑	↓
Idleb		28	-	-44.0	-44.0	↔	↓	↓	Idleb	213		-	-52.8	-59.5	↔	↓	↓
Lattakia		50	-	17.6	-20.0	↔	↑	↓	Lattakia	600		-	14.3	-9.4	↔	↑	↓
Quneitra		32	-46.7	-13.4	61.7	↓	↓	↑	Quneitra	363		-13.6	2.0	-21.4	↓	↑	↓
Ar-Raqqa		71	-	63.2	-18.9	↓	↑	↓	Ar-Raqqa	542		-	-3.7	-26.6	↔	↓	↓
Rural Damascus		30	7.1	-11.8	-23.1	↑	↑	↓	Rural Damascus	554		1.9	-2.2	0.7	↑	↓	↑
As-Sweida		50	25.0	100.0	-	↑	↑	↔	As-Sweida	525		-2.3	-4.5	-2.4	↓	↓	↓
Tartous		50	-	122.2	-7.4	↔	↑	↓	Tartous	600		-	23.1	-14.3	↔	↑	↓
Rice (kg)		Aleppo	469	7.1	-3.8	-9.6	↑	↓	↓	Yogurt (kg)		Aleppo	305	-6.3	-2.6	-19.8	↓
	Damascus	442	-0.1	-4.8	4.0	↓	↓	↑	Damascus		304	-0.2	-3.9	12.6	↓	↓	↑
	Dar'a	571	9.8	0.5	14.2	↑	↑	↑	Dar'a		255	6.7	5.9	-21.5	↓	↑	↓
	Deir-ez-Zor	534	-11.7	6.7	-28.9	↓	↑	↓	Deir-ez-Zor		400	-3.0	-7.7	-56.8	↓	↓	↓
	Hama	450	12.5	20.0	-19.4	↑	↑	↓	Hama		325	8.3	6.0	-29.1	↑	↑	↓
	Al-Hasakeh	423	3.5	2.5	-17.5	↑	↑	↓	Al-Hasakeh		309	-1.3	-1.3	2.8	↓	↑	↑
	Homs	400	-5.5	-2.8	-19.7	↓	↓	↓	Homs		275	-8.3	-6.2	-10.3	↓	↓	↓
	Idleb	329	-	-26.9	-34.2	↔	↓	↓	Idleb		204	-	-32.0	-18.4	↔	↓	↓
	Lattakia	450	-	-	-10.0	↔	↔	↓	Lattakia		250	-	-6.5	-9.1	↔	↓	↓
	Quneitra	516	-6.5	-2.6	5.9	↓	↓	↑	Quneitra		201	-4.4	-10.0	0.5	↓	↓	↑
	Ar-Raqqa	496	-	6.3	-33.9	↔	↑	↓	Ar-Raqqa		342	1.2	-14.6	-14.6	↑	↓	↓
	Rural Damascus	448	1.0	-1.0	-5.8	↑	↑	↓	Rural Damascus		300	-	-7.1	20.0	↔	↓	↑
	As-Sweida	250	-	-9.1	-23.1	↔	↓	↓	As-Sweida		275	-	-	-	↔	↔	↔
	Tartous	475	-	15.2	-13.6	↔	↑	↓	Tartous		275	-	-4.3	-13.8	↔	↓	↓