



World Food Programme

Emergency Dashboard | January 2019

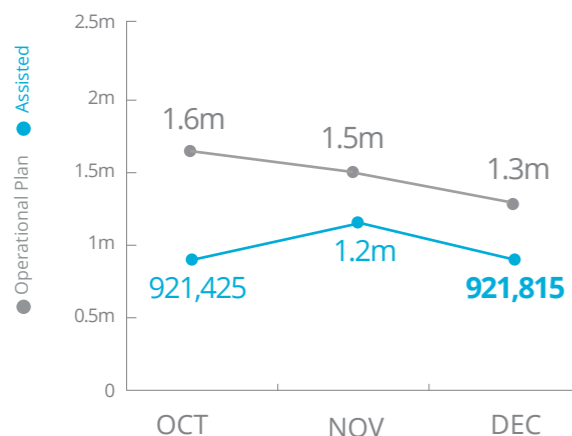
SAVING LIVES  
CHANGING LIVES

# Democratic Republic of Congo



## PEOPLE ASSISTED

DR Congo Interim Country Strategic Plan (ICSP)

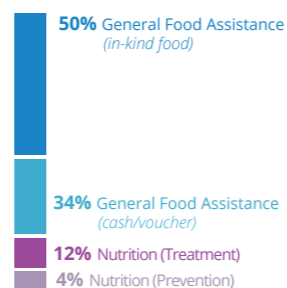


SOURCE: WFP, 15 JANUARY 2019



## OPERATIONAL PROFILE

By activity/modality



DECEMBER

Percentages may include overlaps, i.e. beneficiaries that have been assisted through two or more activities/modalities.

By gender



DECEMBER

SOURCE: WFP, 15 JANUARY 2019



## FUNDING

DR Congo Interim Country Strategic Plan (ICSP)

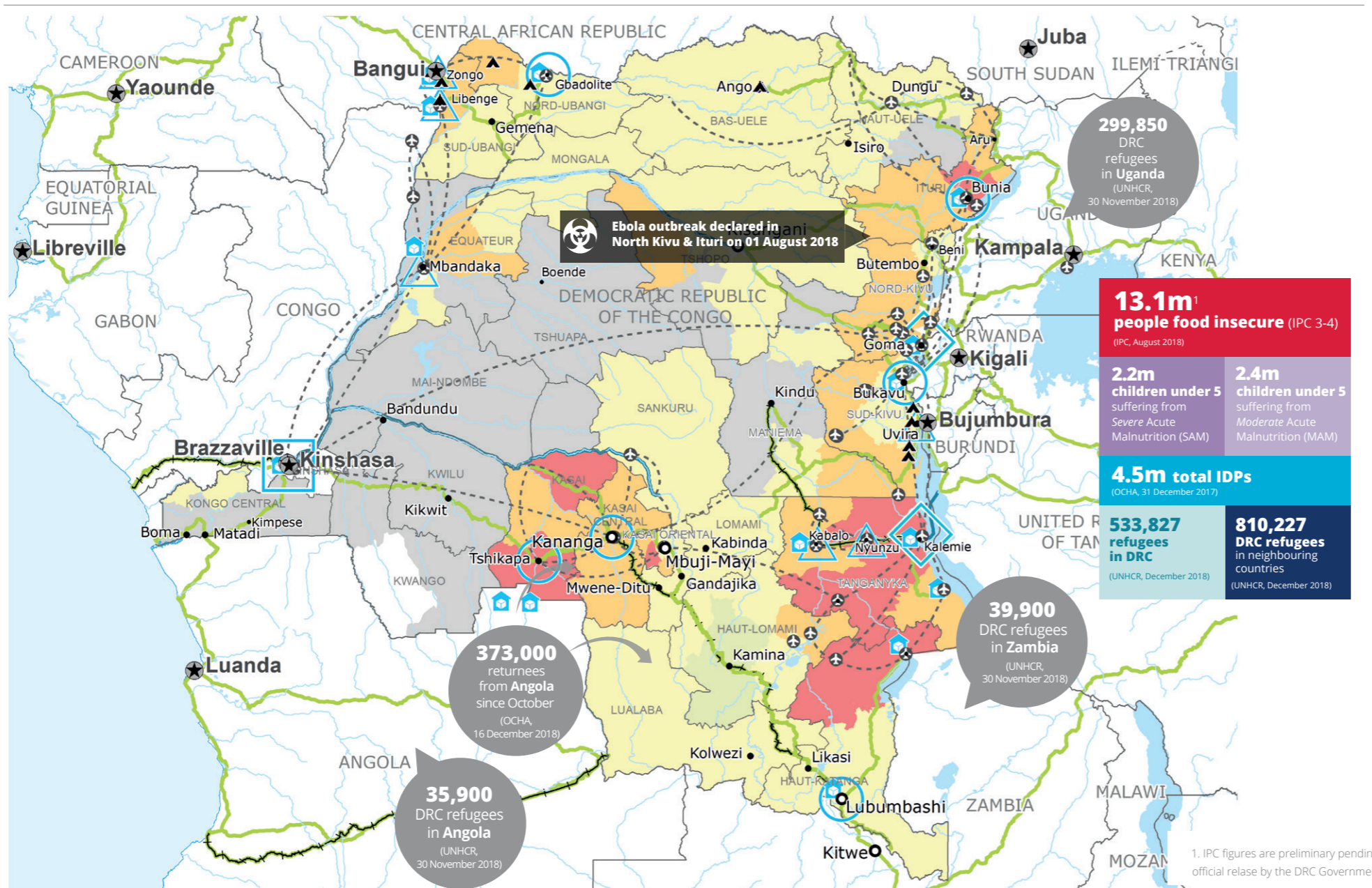
February - July 2019

# US\$140.7m

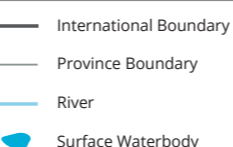
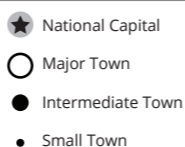
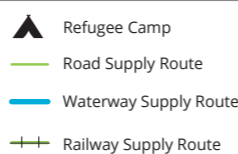
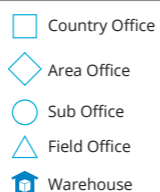
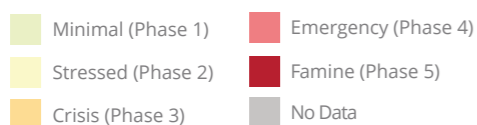
Net funding requirement

2019 LEVEL 3 RESPONSE REQUIREMENTS: US\$452.8

SOURCE: WFP, 01 FEBRUARY 2019



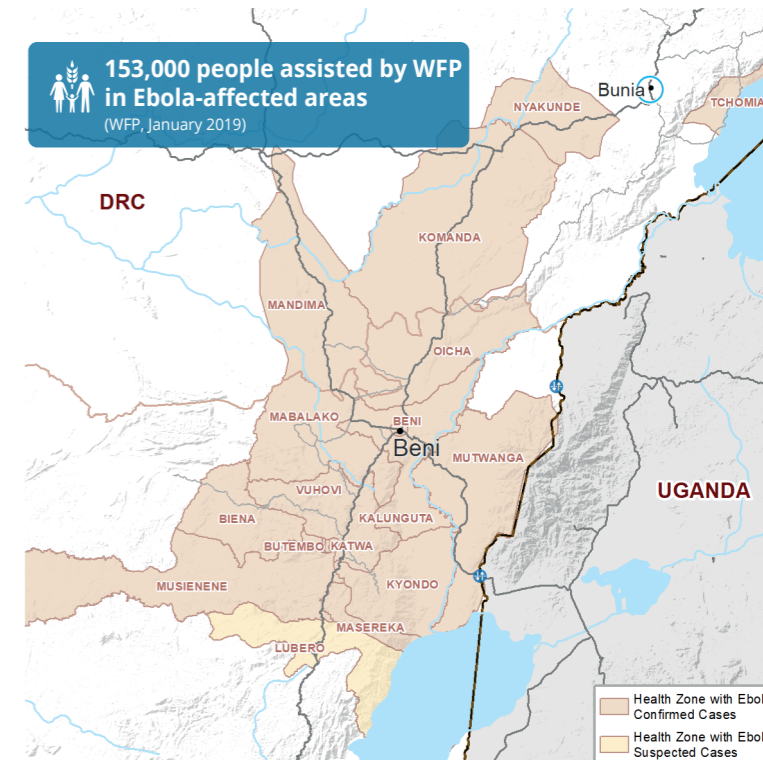
### IPC Food Security Classification (August 2018)



Sources: WFP, UNGIWG, GAUL, GLCSC, OCHA, UNHCR, IPC.

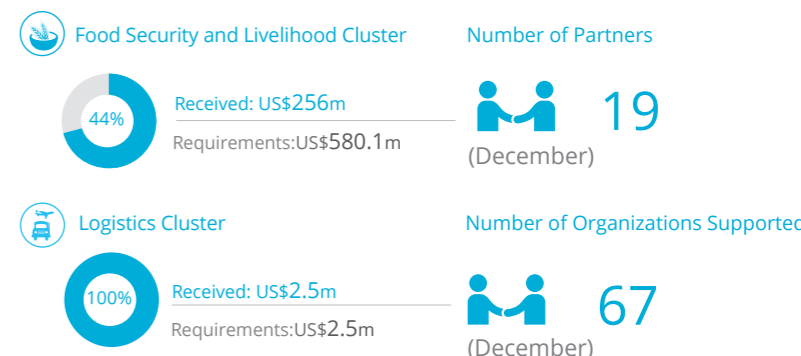
The designations employed and the presentation of material in the map(s) do not imply the expression of any opinion on the part of WFP concerning the legal or constitutional status of any country, territory, city or sea, or concerning the delimitation of its frontiers or boundaries. © World Food Programme 2018.

## EBOLA AFFECTED HEALTH ZONES

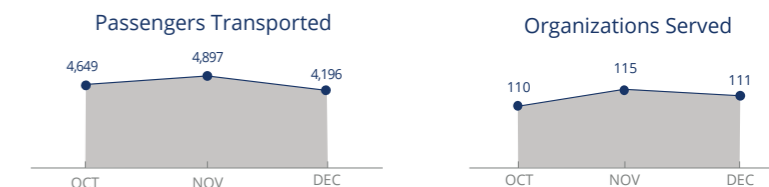


SOURCE: WHO, DECEMBER 2018

## WFP LED & SUPPORTED CLUSTERS



## UN Humanitarian Air Service (UNHAS)



SOURCES: OCHA FTS, 30 January 2019; CLUSTERS, 30 January 2019

## WFP LEVEL 3 EMERGENCY

SINCE 06 OCTOBER 2017 (LEVEL 2 EMERGENCY SINCE 12 DEC 2013)

For more information, see the SITUATION REPORT and COUNTRY BRIEF [www.wfp.org/countries/congo-democratic-republic](http://www.wfp.org/countries/congo-democratic-republic)

**2A** Interim Country Strategic Plan (2018-2020)

Produced by the WFP Operations Centre (OPSCEN) jointly with Country Office and Regional Bureau Johannesburg. This dashboard is based on best available information at the time of production. Future updates may vary as new information becomes available.