



# South West Monsoon (SWM) - 2019

## Forecast and Readiness for Emergency Response



World Food Programme

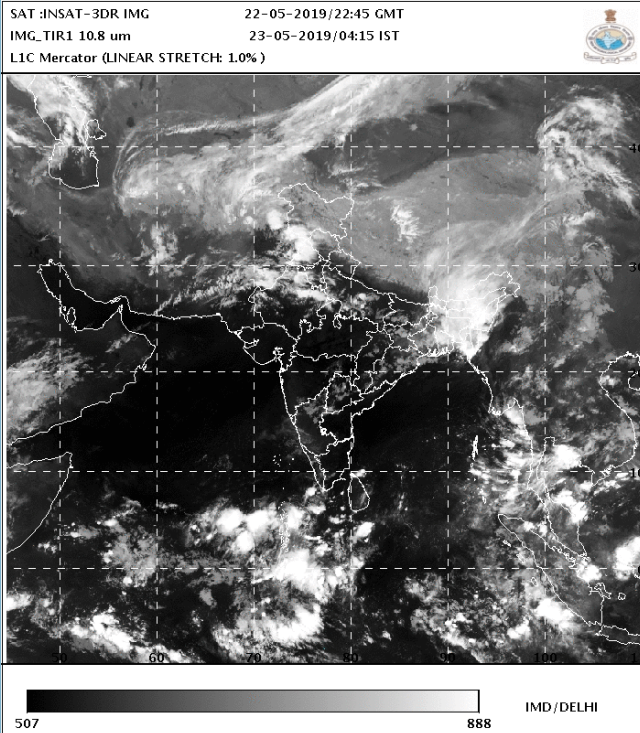


Figure 01: Latest Satellite image, showing active cloudiness in the South-western sea areas (IMD)

### Key Highlights - Weather & Climate

- The Department of Meteorology (DoM) convened the Monsoon Forum on 3rd May 2019. DMC hosted the monsoon preparedness meeting on 21 May.
- As of 22 May; pre-monsoon conditions are prevailing and heavy rains are expected during 24 to 30 May, and monsoon may established at the end of May 2019.
- Current prediction shows a near or below normal South-West monsoon rainfall (against 30 year average), as changes over Indian Ocean during past few weeks.
- However, this might change suddenly, if there is a development of cyclonic event; Met dept. is closely monitoring the situation, and disseminate warning with a lead time of 48 to 72 hours through EOC and media.
- The most likely impact scenario (based on current predictions), derived by DMC (using historical analysis), expects lower impact compared to 2016/2017 monsoon floods.

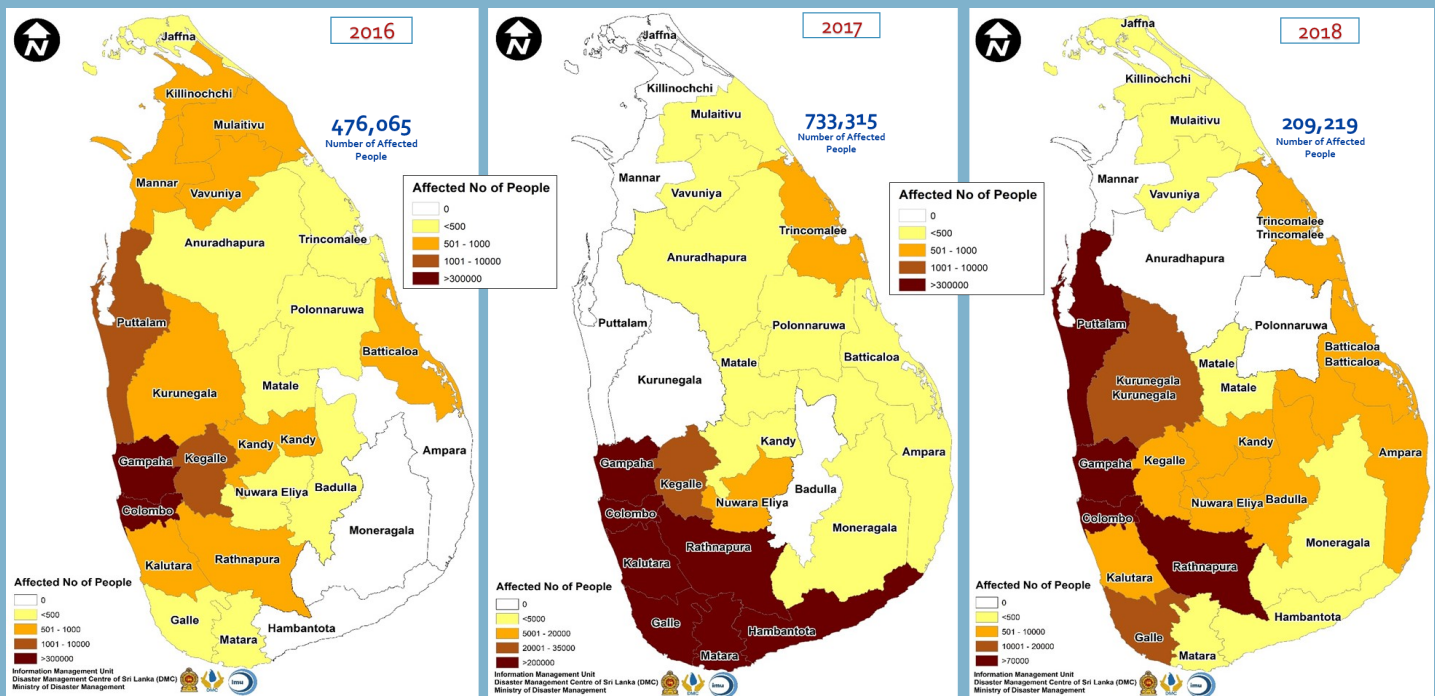


Figure 02: Historical impact data over past 3 years in the South-West Monsoon (During Month of May)-DMC/NDRSC

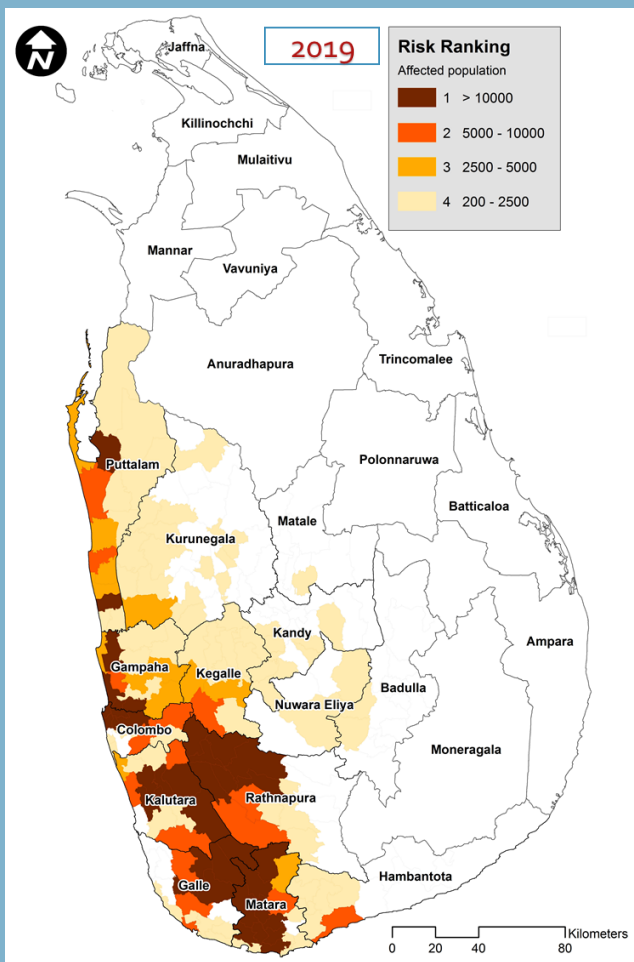
**Emergency Contact :**  
**National Emergency Call Centre 117**  
**Hotline : 011 2 136 136**  
**Fax : 011 2 670 079**

**DoM : 011 2686686**  
**NBRO : 011 2552220**  
**DOI : 011 2505488**  
**NDRSC : 011 2665258**  
**Suwa Seriya : 1990**



# South West Monsoon (SWM) - 2019

## Forecast and Readiness for Emergency Response



**Figure 03: Potential Impact Areas for SW monsoon 2019. Source: DMC (EOC)**

### Ongoing preparedness actions

- Figure 3 shows the potential impact areas in the districts identified through historical analysis.
- Districts identified as Priority 1 include: Ratnapura, Kalutara, Galle, Kegalle, Colombo, Matara & Gampaha.
- The Government has dedicated 20-26 May as emergency preparedness week. In the week prior, WFP conducted a simulation exercise in Akuressa (Matara) involving all districts prone to the SW Monsoon impact.
- Cluster level strategic resource centers have been identified in the south-western region for response and rescue operations.
- Scenario based planning conducted at divisional level on relief management. Extra-security arrangements are in place for safety centers and vulnerable populations considering current security in the country.
- Awareness programmes conducted at each vulnerable divisional secretariat and evacuation drills have been conducted in some selected locations by DMC/NDRSC.
- Community awareness conducted by DMC with Sirasa-TV "Gammadda" coordinated by APAD Sri Lanka.

### Most likely scenario (2019) anticipated by Emergency Operation Centre

Districts (South-West)	Affected		Houses Damaged		Safety Locations	Safe Location	
	Families	People	Fully	Partially		Families	Persons
5 to 6	140,029	547,200	1,134	9,046	270	35,071	155,293

Current gaps: Based on the above scenario, DMC/NDRSC requesting tarpaulins, mobile toilets, sanitary items (Hygiene kits) etc. More information can requested from Relief Services Center. [SHOULD YOU CITE THEIR WEB](#)

**Dry Spell:** Due to long spell of dry weather in some parts of North central and eastern dry-zone (based on 9 months standard precipitation index classifications), there might be crop losses mostly in the pockets of eastern regions (effects on the Paddy and OFC). In some areas, drinking water distribution is carried out by local authorities.

### Our Partners



Australian Government

UN World Food Programme

More info:

[laksiri.nanayakkara@wfp.org](mailto:laksiri.nanayakkara@wfp.org)

[indu.abeyratne@wfp.org](mailto:indu.abeyratne@wfp.org)