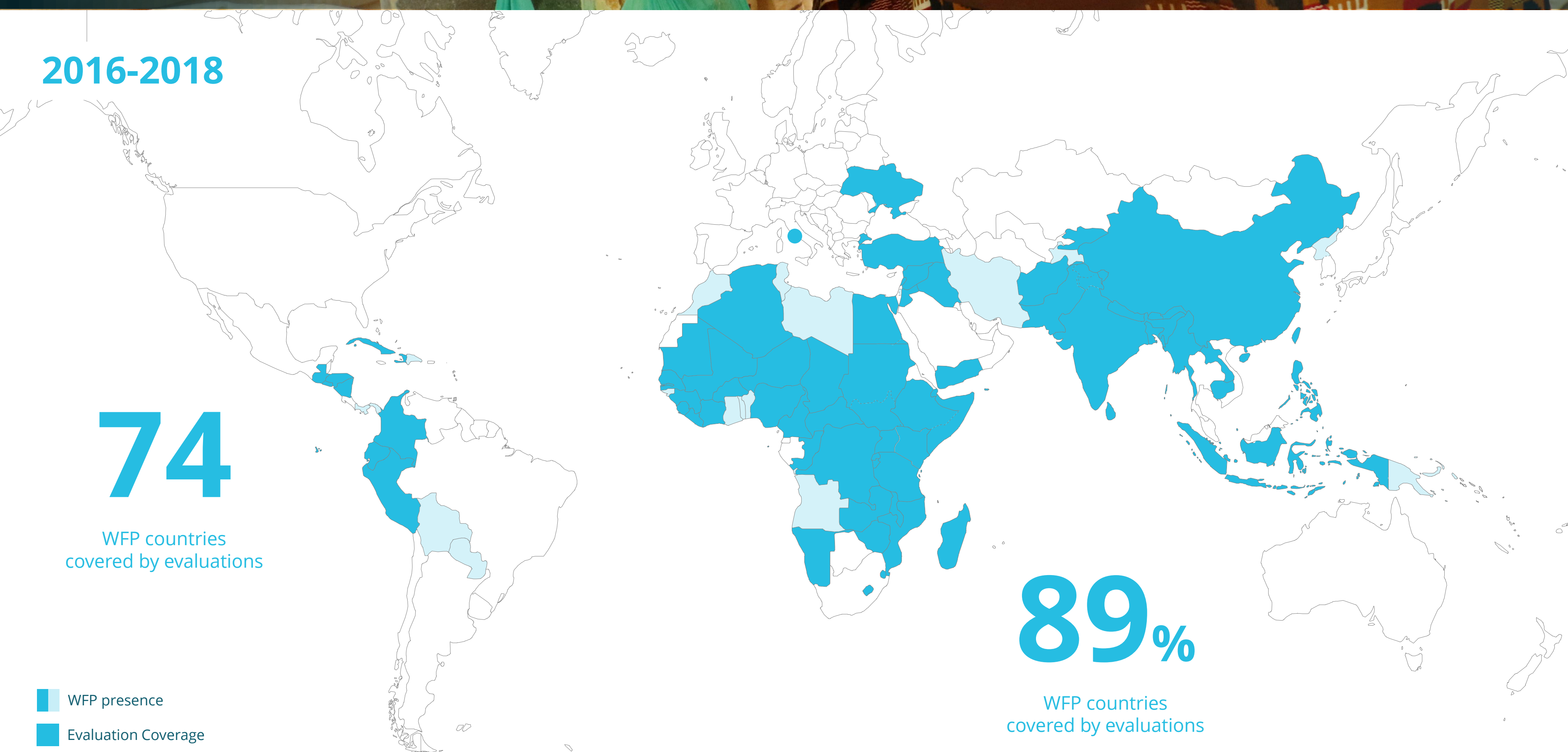


EVALUATION EVIDENCE

Overview of evaluations completed in 2016–2018, contributing to the strategic priorities of WFP



EVALUATION FUNCTION

Overview of progress towards the outcomes set out in the WFP Evaluation Policy (2016–2021)

EVALUATION COVERAGE

active policies evaluated

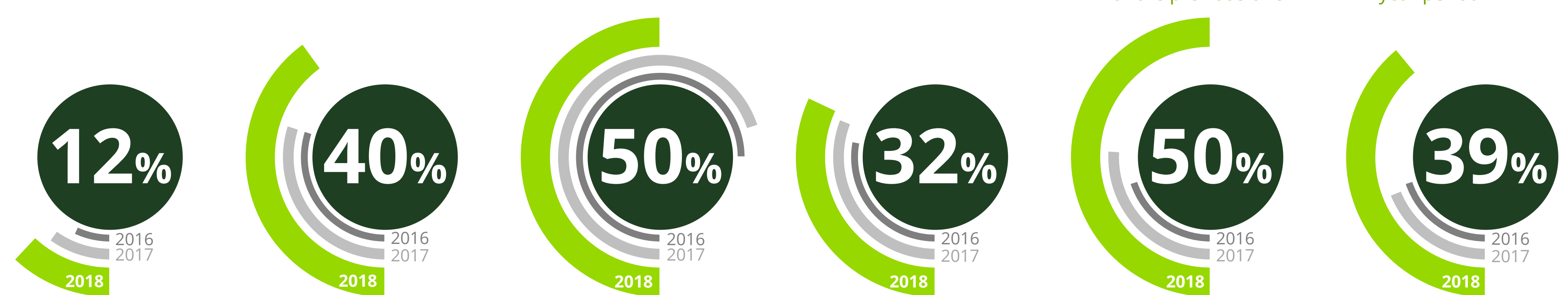
WFP ten largest portfolios, covered by a CPE in the previous 5 years

active corporate emergency responses ongoing in the previous 3 years evaluated

WFP portfolios (excluded 10 largest), covered by a CPE in the previous 10 years

country programmes that ended in 2018 had an evaluation that year or the previous one

country offices have completed at least one decentralized evaluation within a 3 year period



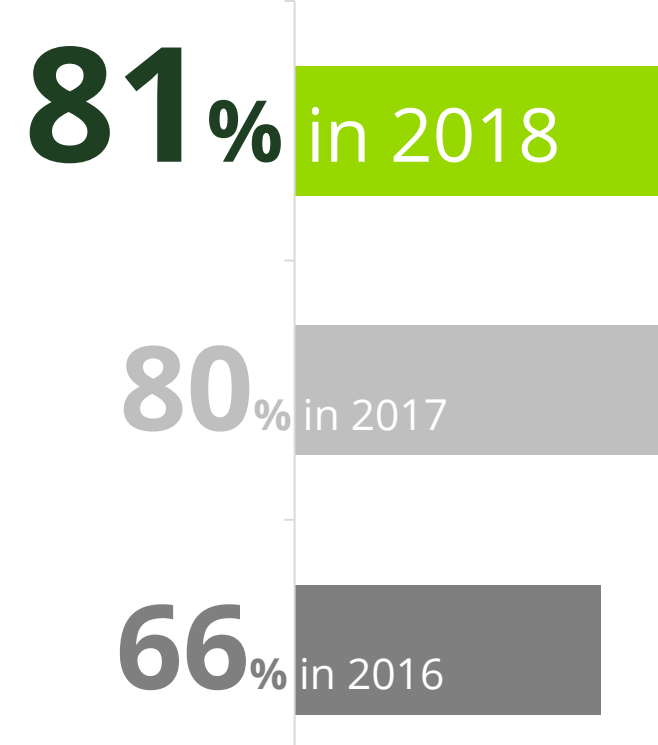
EVALUATION QUALITY

evaluation reports rated 'meeting requirements' or higher



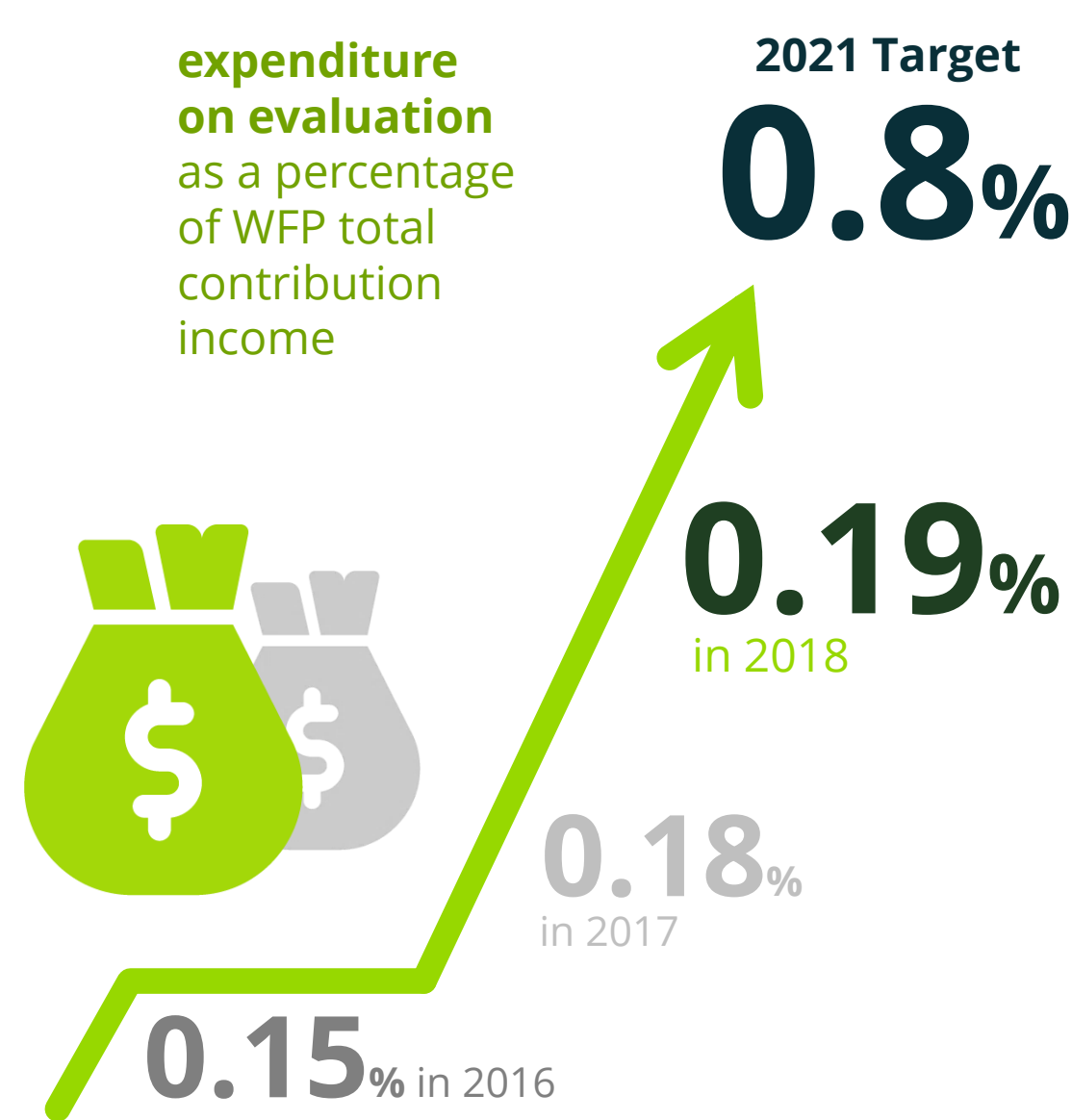
EVALUATION USE

Implementation of actions within management responses



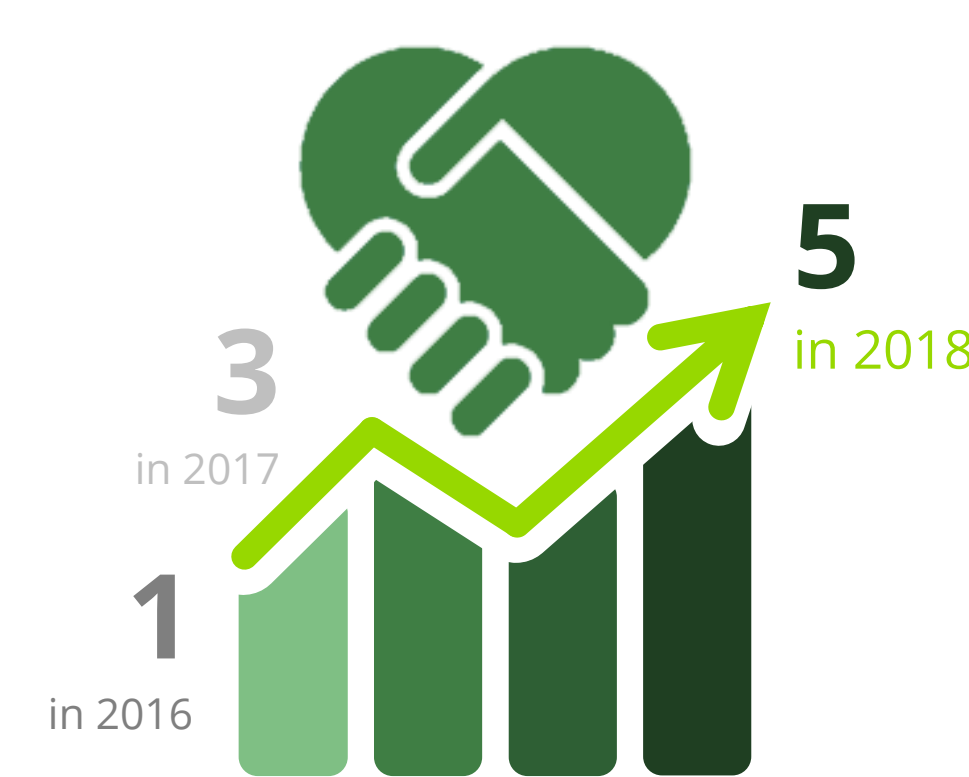
EVALUATION FUNDING

expenditure on evaluation as a percentage of WFP total contribution income



EVALUATION PARTNERSHIPS

completed joint and inter-agency evaluations



EVALUATION OUTLOOK

Looking ahead: the outlook for the evaluation function and areas for attention in the coming years



Building on the achievements so far, WFP has identified key priorities for 2019 and beyond to ensure continued progress towards achievement of the objectives set out in the Evaluation Policy (2016–2021):

Ensuring continued independent, credible and useful centralized and decentralized evaluations

Strengthening appropriate centralized and decentralized evaluation coverage

Ensuring adequate evaluation management capacity across WFP

Strengthening partnerships in international fora