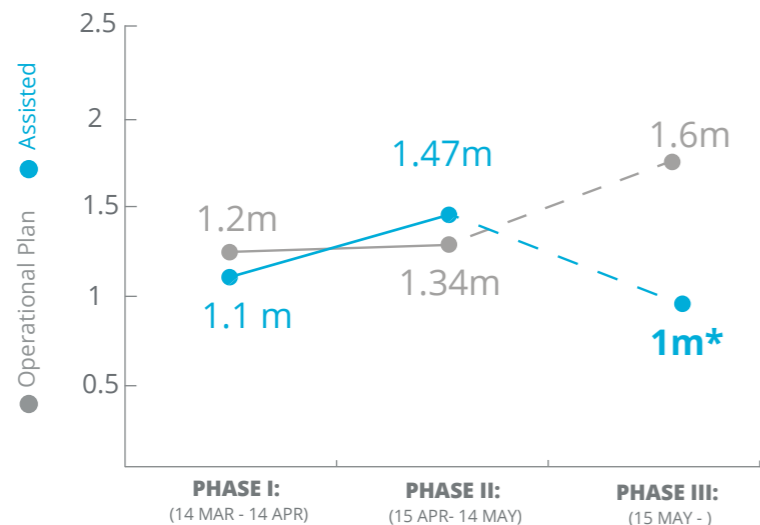




World Food Programme

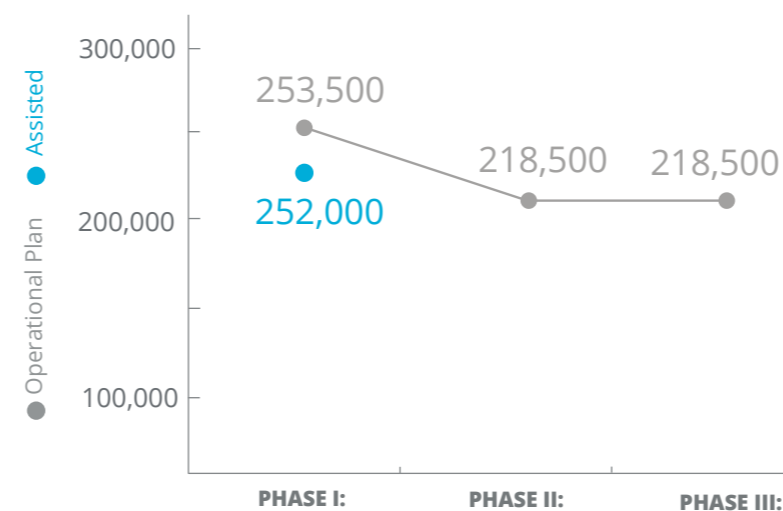
Mozambique (Cyclone and Flood Response)

PEOPLE ASSISTED CYCLONE IDAI

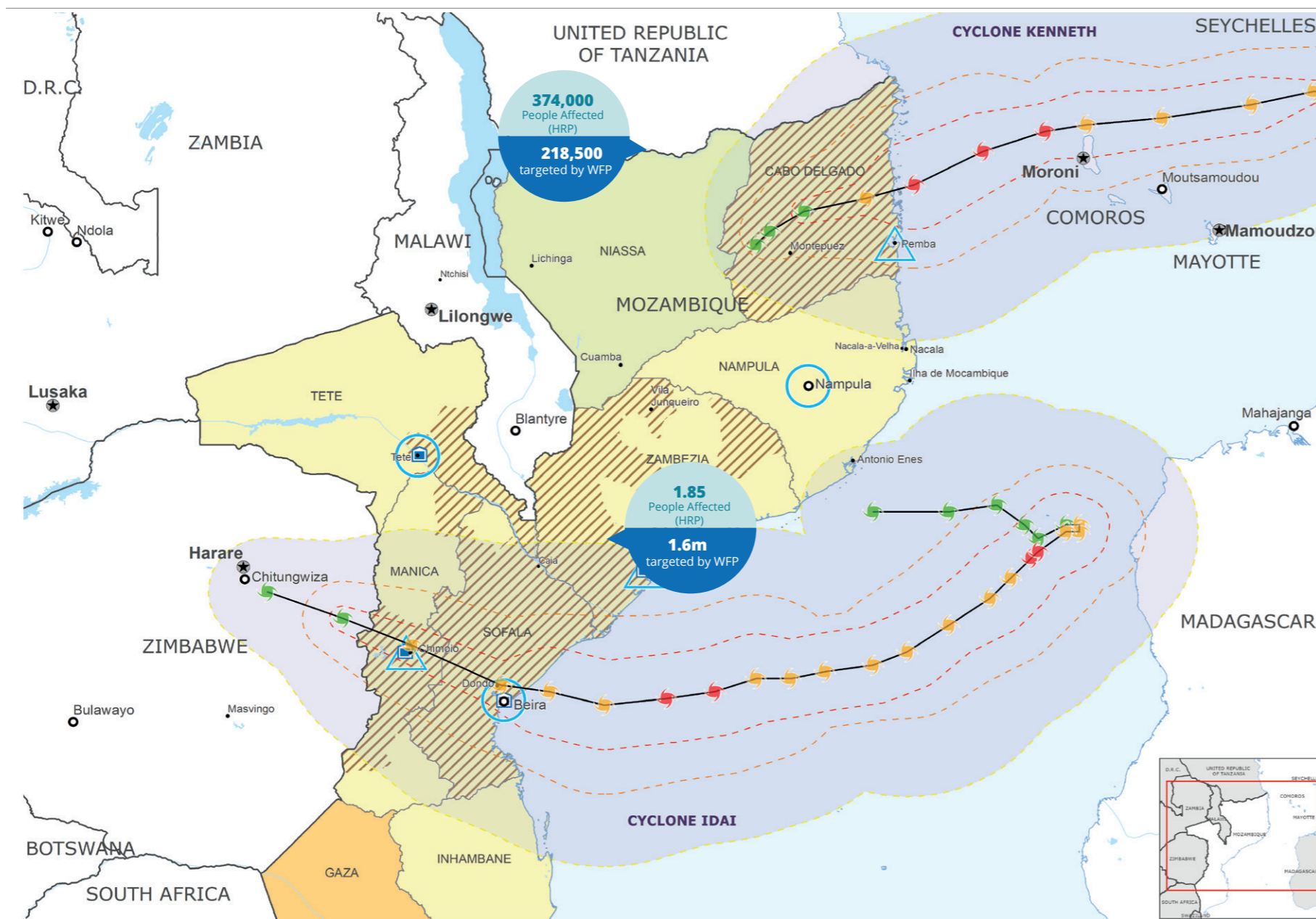


*Reached as of 28 June; Distributions for Phase III are ongoing
SOURCE: WFP, 28 JUNE 2019

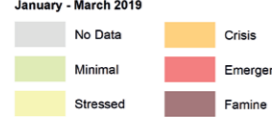
PEOPLE ASSISTED CYCLONE KENNETH



An additional 55,500 people received 3-day emergency rations
Planning figures revised due to Funding Shortfalls and access constraints
SOURCE: WFP, 02 JULY 2019



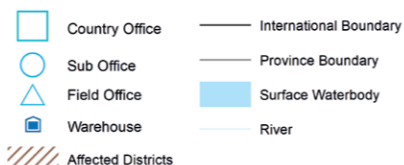
IPC Food Security Classification January - March 2019



Wind Speed



Wind Buffer



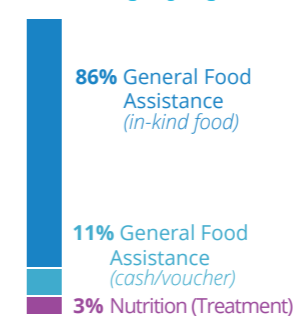
Sources: OCHA, WFP, GLCS, UNGIWG, UNHCR, Geonames.

The designations employed and the presentation of material in the map(s) do not imply the expression of any opinion on the part of WFP concerning the legal or constitutional status of any country, territory, city or sea, or concerning the delimitation of its frontiers or boundaries.
© World Food Programme 2019.

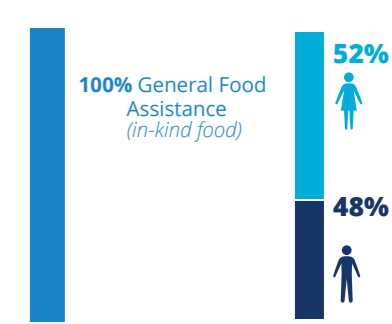


OPERATIONAL PROFILE

IDAI RESPONSE



KENNETH RESPONSE



Percentages may include overlaps, i.e. beneficiaries that have been assisted through two or more activities/modalities.

SOURCE: WFP, JUNE 2019



NET FUNDING REQUIREMENTS

Level 3 Emergency Response

Cyclone Idai (March - June)

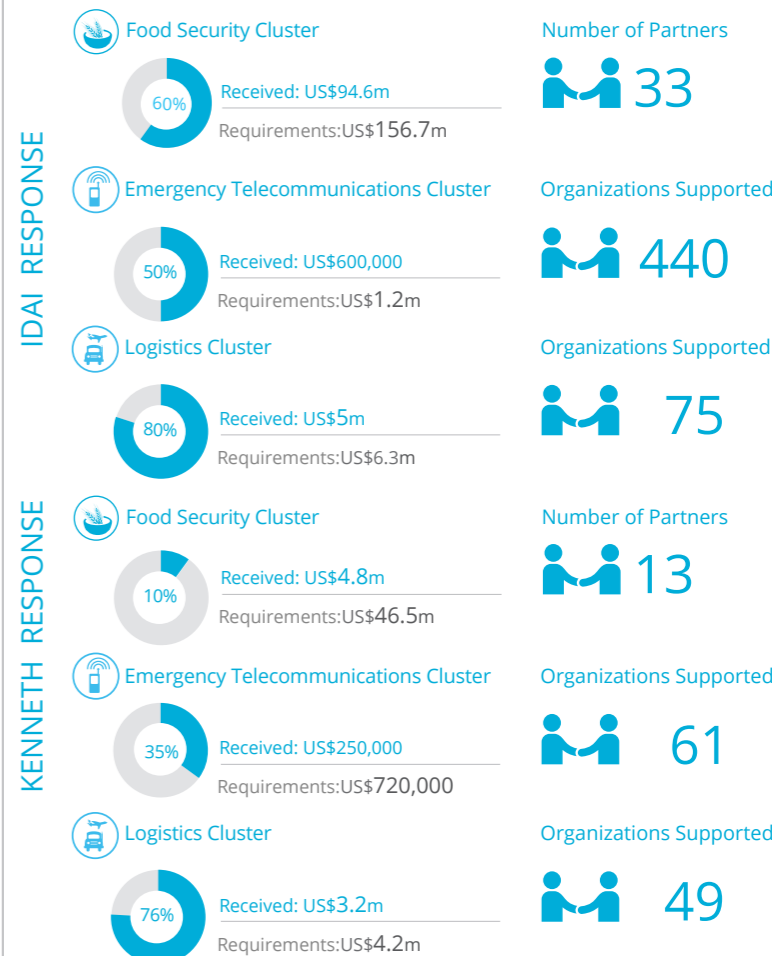


Cyclone Kenneth (May - July)



Total Requirements: US\$85.3m

WFP-LED AND SUPPORTED CLUSTERS



SOURCE: WFP, 01 JULY 2019

SOURCE: CLUSTERS, 03 JULY 2019

WFP LEVEL 3 EMERGENCY SINCE 28 MARCH 2019

For more information, see the SITUATION REPORT and COUNTRY BRIEF
www.wfp.org/countries/mozambique

Produced by the WFP Operations Centre (OPSCEN) jointly with Country Office and Regional Bureau Johannesburg. This dashboard is based on best available information at the time of production. Future updates may vary as new information becomes available.