

Southern Africa Region: ENSO, Rainfall, and Harvest Patterns

Rainfall, % of Average (6 months Oct - Mar)

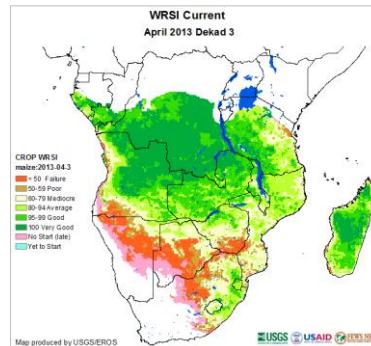
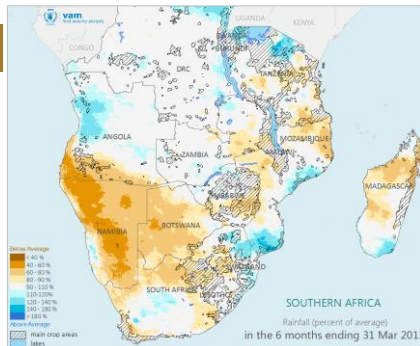
Water Requirement Satisfaction Index

2012/13

Neutral

El Niño-like poor season with late onset and erratic rainfall and prolonged dry spells in southern areas. This combined with cyclones and flooding compromised crop production in several countries.

34

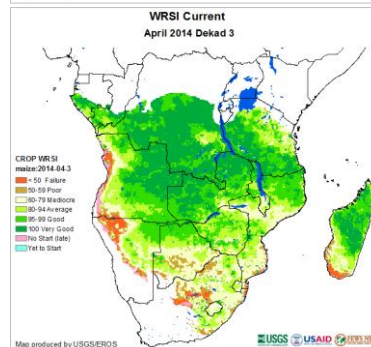
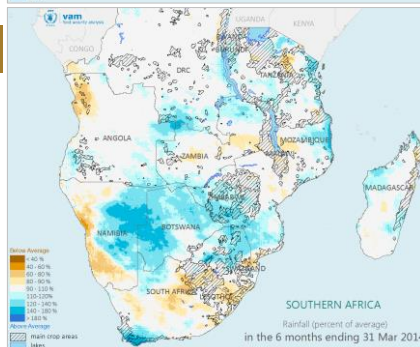


2013/14

Neutral

Normal to above-normal rainfall in most parts of the region led to overall good crop production.

41

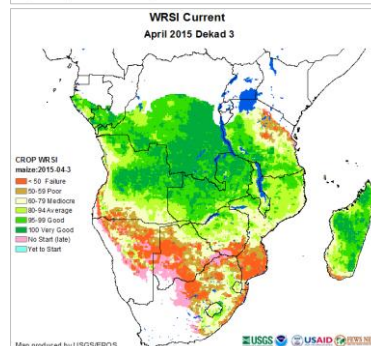
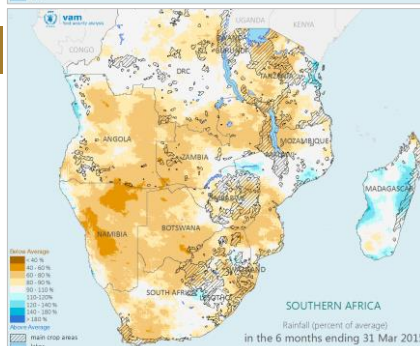


2014/15

Weak El Niño

Very late start to the season in parts of the region, abnormally high rainfall and flooding in the eastern and north-eastern part of the region; reduced crop production and depressed regional stocks.

33

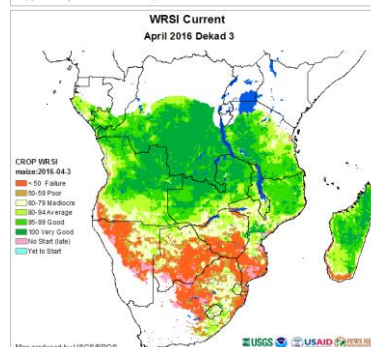
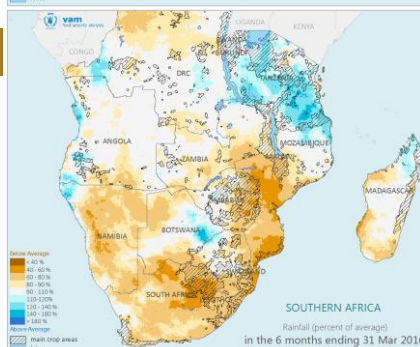


2015/16

Very Strong El Niño

One of the strongest El Niño on record, comparable with the 1982-83 and 1997-98 events; worst drought in 35 years.

31

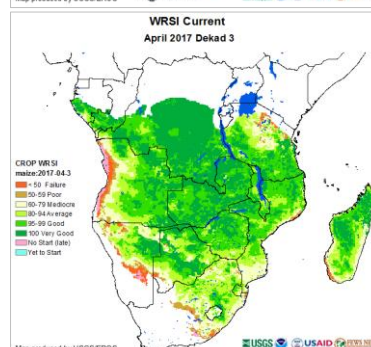
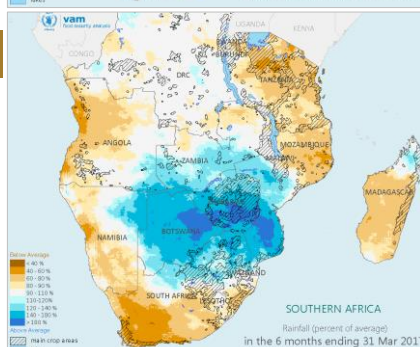


2016/17

Weak La Niña

High rainfall in many parts of the region resulted in overall good crop performance; year of Cyclone Dineo

44

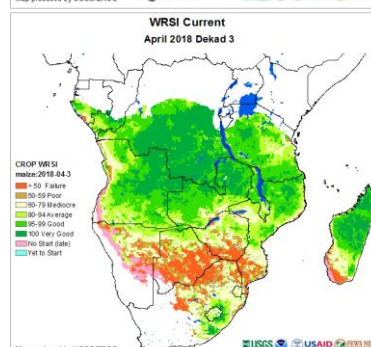
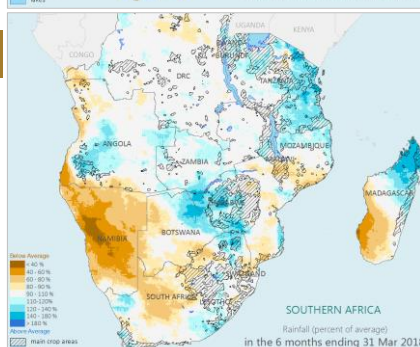


2017/18

Weak La Niña

Delayed onset and erratic rainfall followed by mid-season dry spells resulted in mixed seasonal performance

39

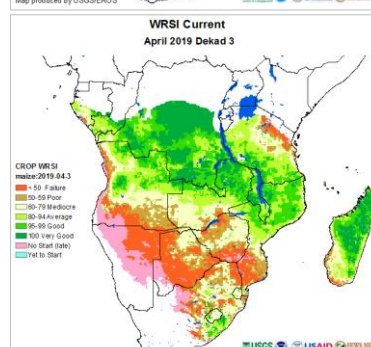
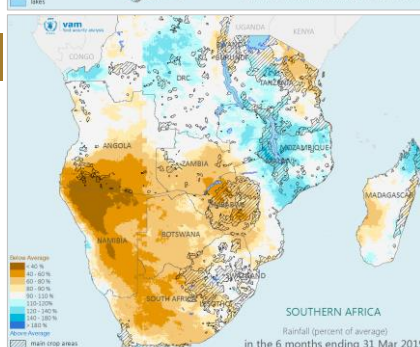


2018/19

Weak El Niño

Driest season since at least 1981 in central & western parts of the region; quick succession of Cyclones Idai and Cyclone Kenneth; widespread reduction in crop production

37



Cereal Production

Total cereal production (million tons) in selected SADC Member States; Angola, Botswana, Eswatini, Democratic Republic of Congo, Lesotho, Malawi, Namibia, South Africa, Tanzania, Zambia, Zimbabwe. Excludes: Madagascar, Mauritius, Mozambique, Seychelles.

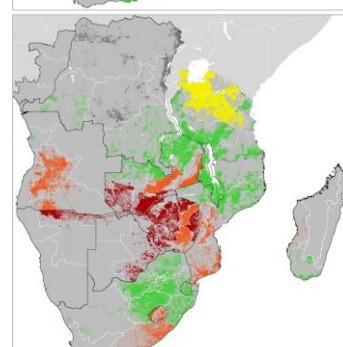
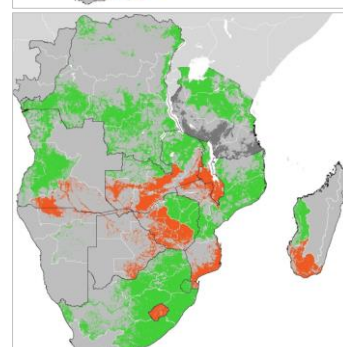
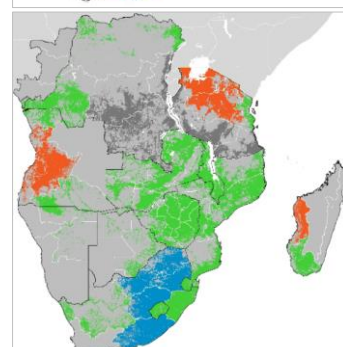
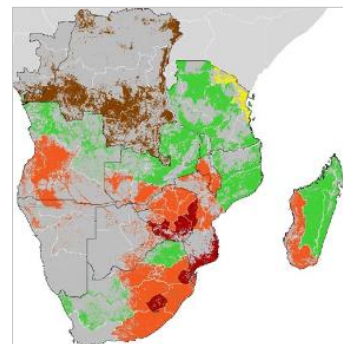
Conditions:

- Exceptional
- Favourable
- Watch
- Poor
- Failure
- Out-of-Season
- No Data



Note: Tanzania has been added to the GEOGLAM Southern Africa Region maps.

End-of-Season Post Harvest Conditions



La Niña

Sea Surface Temperature anomaly

El Niño

Very Strong

Strong

Moderate

Weak

Neutral

Weak

Moderate

Strong

Very Strong

(≤-2)

(-1.9 to -1.5)

(-1.4 to -1)

(-0.9 to -0.5)

(-0.4 to 0.4)

(0.5 to 0.9)

(1 to 1.4)

(1.5 to 1.9)

(≥2)