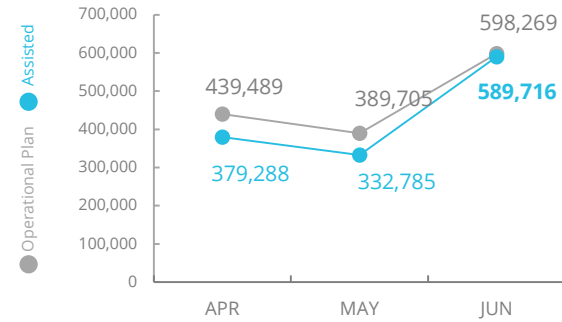


Mali



PEOPLE ASSISTED

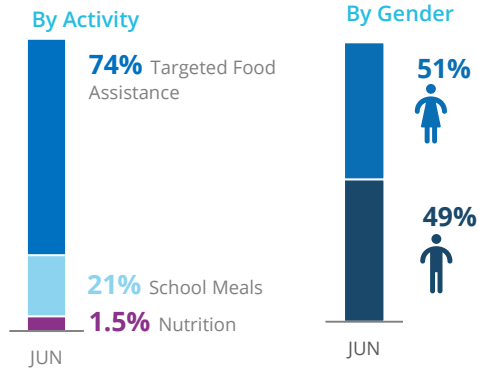
Mali Transitional Interim Country Strategic Plan (T-ICSP)



SOURCE: WFP, 25 JUL 2019



OPERATIONAL PROFILE



FUNDING

Mali Transitional Interim Country Strategic Plan (T-ICSP)

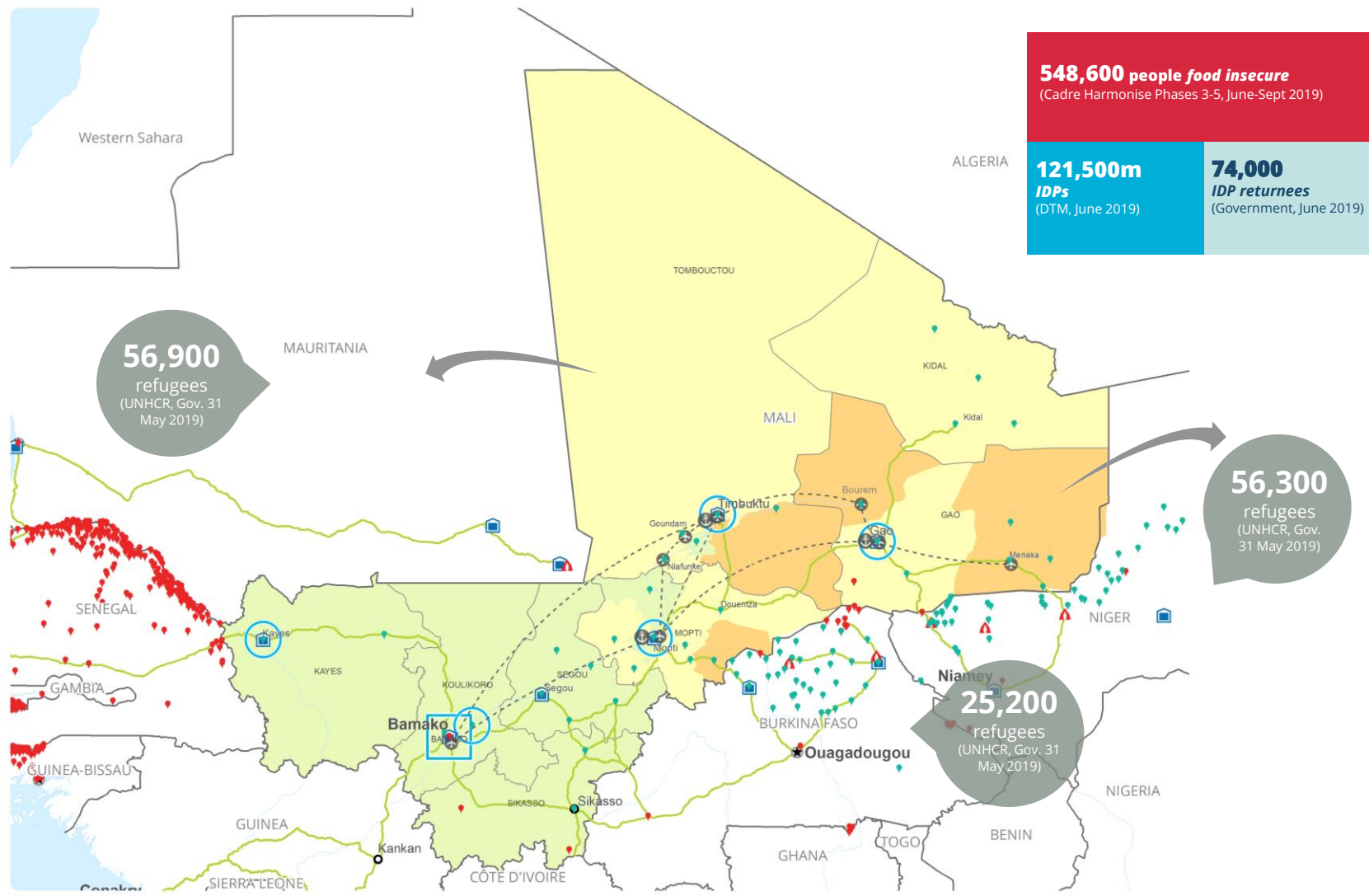
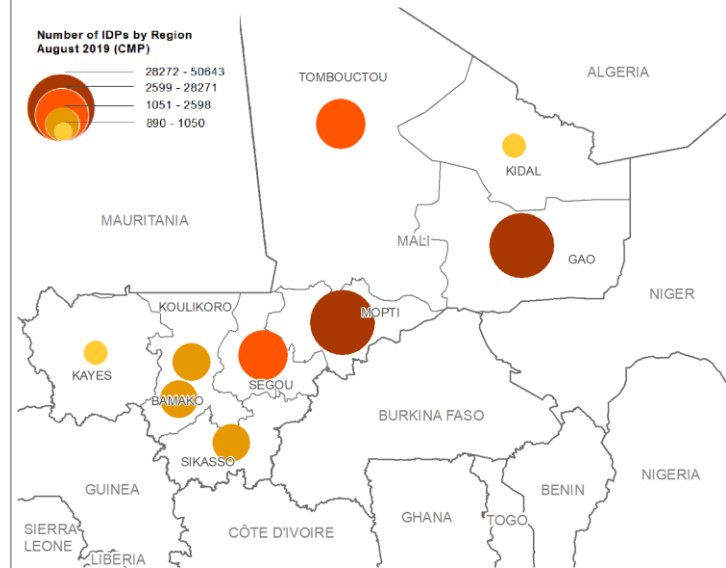
July 2019 - December 2019
Net funding requirements

US\$43.6m

SOURCE: WFP, 25 JUL 2019

IDP CONCENTRATION MAP

As of June 2019



WFP-LED AND SUPPORTED CLUSTERS



GLOBAL FOOD SECURITY CLUSTER

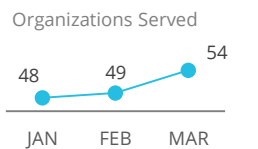
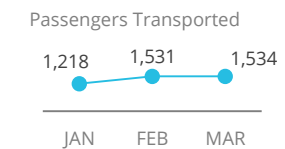


Number of Partners (June)
46

SOURCE: WFP, 25 JUL 2019



UN HUMANITARIAN AIR SERVICES (UNHAS)



SOURCE: WFP, 25 JUL 2019

WFP LEVEL 2 EMERGENCY

SINCE 12 JANUARY 2012



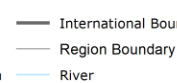
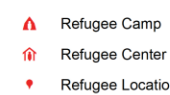
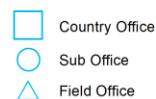
For more information, see the SITUATION REPORT and COUNTRY BRIEF
<https://www.wfp.org/countries/mali>

Mali Transitional ICSP
https://docs.wfp.org/api/documents/WFP-0000070934/download/?_ga=2.136181554.2010349590.1564781252-114077222.1558363545

Produced by the WFP Operations Centre (OPSCEN) jointly with Country Office and Regional Bureau Dakar. This dashboard is based on best available information at the time of production. Future updates may vary as new information becomes available.

CH Food Security Classification

June - August 2019 Projection



Sources: WFP, UNGIWG, GAUL, GLCSC, OCHA, UNHCR.

The designations employed and the presentation of material in the maps do not imply the expression of any opinion on the part of WFP concerning the legal or constitutional status of any country, territory, city or sea, or concerning the delimitation of its frontiers or boundaries. © World Food Programme 2019.