

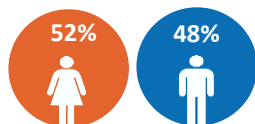


WFP Mozambique Situation Report #16

August 2019



2.3 million people assisted
August 2019



GENDER MARKER 2A Country Strategic Plan

| | |
|--|---|
| Humanitarian Response Plan Nov-May 2020 (August 2019 revision*) <small>*The updated HRP for the Lean Season Response will be launched by 12 September</small> | Overall requirements: USD 620.4 m (USD 397.9 m new requirements) WFP share: USD 134.6 m (including Food, Nutrition Education and Protection sectors) |
| WFP Net Funding Requirements: USD 97 million (Oct 2019 – Mar 2020) | |

In Numbers

2.5 million people in need (HRP, August 2019)

6 provinces affected

1.6 million people in need of food assistance (IPC, July 2019)

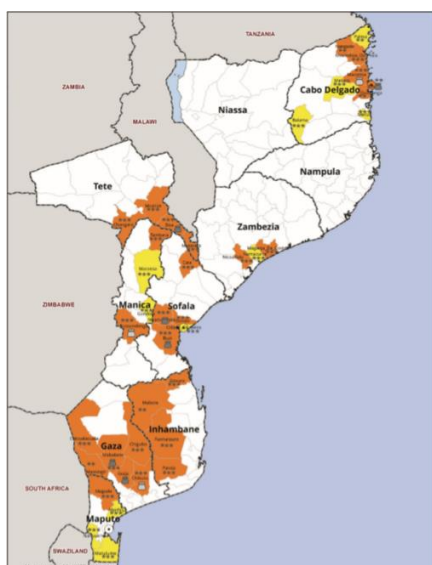
2.3 million Cyclone and flood affected people assisted (WFP, since March 2019)

Highlights

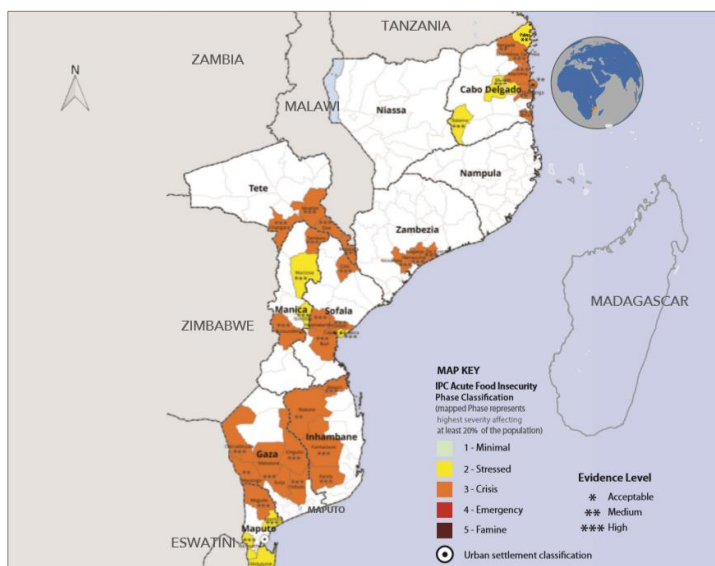
- For implementing recovery interventions in Cyclone and drought-affected areas from October 2019 to March 2020, which corresponds to the next harvest season, WFP's net funding requirements stand at USD 97 million.

Situation Update

- According to the IPC (Integrated Food Security Phase Classification) results released in July 2019, it is estimated that 1.6 million people are currently facing difficulties in accessing food to meet acceptable food needs (April – September 2019). Of the 39 districts analyzed using IPC, it is estimated that from October 2019, at least 12 districts require a combination of urgent interventions such as food assistance, agricultural inputs, infrastructure reconstruction and livelihood support. It is projected that the food insecurity and acute malnutrition situation will prevail until the end of February 2020, when the next harvest is expected to start. Humanitarian assistance already provided in the most affected areas has prevented the deterioration of the food security situation. In addition, approximately 67,500 children under five years of age need treatment for acute malnutrition.
- As of 31 July, the emergency phase of the Cyclone response was finalized. WFP is currently transitioning to the recovery and resilience phase that will support Cyclone affected populations until March-April 2020 (next harvest).
- WFP has designed a three-phase post-Cyclone recovery and resilience strategy aiming to support recovery, reconstruction and resilience-strengthening efforts among the affected communities. The first phase of implementation is a 3-month Post-Emergency Recovery programme started in August. Unconditional assistance will continue to be provided to those most in need.



Current Acute Food Insecurity April- September 2019



Projected Acute Food Insecurity October 2019- February 2020

- In collaboration with the authorities and humanitarian partners, WFP has assisted 2.3 million people (2,308,423) with food assistance in Sofala, Manica, Zambezia and Tete provinces since the start of the Cyclone Idai response (1.8 m people) and in Cabo Delgado and Nampula since the start of the Cyclone Kenneth response (475,000 people) through in-kind food assistance and vouchers (commodity and value vouchers). WFP finalized the initial emergency response phase and has initiated its response under the recovery phase.
- In August, WFP reached 178,000 beneficiaries with food assistance through in-kind, commodity and value vouchers modalities.

Post-Cyclone Recovery

- WFP's Recovery, Reconstruction and Resilience-building activities started in July 2019. For the rapid recovery phase following the emergency response, WFP will provide conditional food assistance through Food Assistance for Assets (FFA) activities. The objectives of this intervention are to support the immediate food needs of the targeted population, to promote the creation and rehabilitation of assets, to help the recovery of affected communities while reducing household vulnerability to shocks and to contribute to future resilience-building efforts strengthening communities' capacity. Three modalities of assistance (value voucher, commodity voucher and food in-kind) will be used.
- Through its Emergency FFA programme, WFP is supporting the Early recovery phase (July - October). The first phase consists of the creation of low-risk, low-cost assets. These asset activities were determined in consultation with communities, to understand their needs and prioritize the assets creation or rehabilitation that would create adequate conditions for farmers to plant in October. Food distributions were initiated on 26 July in Sofala province and will continue for the next 3 months. With the available resources, WFP is currently targeting 400,000 beneficiaries in Sofala, 100,000 in Manica, and 100,000 in Cabo Delgado (including 28,000 IDPs).
- For the next phase of FFA, WFP aims at increasing the scale of its operations to reach over 1.1 million people during the lean season, from November to March 2020, depending on funding levels. Approximately 900,000 will be targeted in Sofala, Manica, Tete, Zambézia and Cabo Delgado provinces, and an additional 200,000 people will be assisted in drought affected provinces (Gaza and Inhambane). For this phase, WFP will scale up its FFA programme and continue to assist those who lost all their crops and those who had stocks but are running out. The focus will be on agriculture activities, with the objective to optimize the new harvest as well as some reconstruction work in coordination with other UN Agencies, local NGOs and government.
- During this period, unconditional assistance will also be provided to the most critical areas.

Cash-Based Transfers (CBT)

- The UNICEF and WFP Joint Multipurpose Voucher programme was launched on 21 August. The first inaugural distribution was held in Dondo district for 116 households (total target 22,927 households or 114,635 persons). The voucher programme will be piloted for 3 months (from August to October) in the districts of Dondo and Nhamatanda in Sofala Province.

- This project is designed to meet the needs of over 20,000 Cyclone-affected households to access food as well as hygiene and other household items. This programme uses the innovative approach of distributing vouchers ('Senha' or 'cheque') to each family with a value of 2,670 mt each month (USD 43).
- The distribution of value vouchers (3rd cycle) was completed in Nhamatanda and Dondo districts with a total of 29,807 households assisted (149,035 persons) with a total value of 111,478,180 Metical (USD 1,829,792) out of the 30,933 households planned, achieving 96% of the plan.
- As part of the FFA intervention, a total of 5,561 households have been assisted through cash-based transfers (CBT) in Sofala with value vouchers and 479 households with commodity vouchers. The total transfer value equivalent to the 5,561 vouchers is 6,380,000 Metical (USD 104,763) while the total tonnage distributed under commodity voucher is 23.950 metric tons (mt).
- In July 2019, around 2,000 households (10,000 people) received CBT through value vouchers, in Macomia, Cabo Delgado, under WFP's pilot programme for the Cyclone Kenneth emergency response. Depending on the feasibility, WFP aims at expanding the use of the CBT modality in Cabo Delgado province.

Nutrition Programme

- The nutrition emergency response to Tropical Cyclone Idai focused on 39 districts of Manica, Sofala, and Zambézia for the period of April to September 2019. The main objective was to support Moderate Acute Malnutrition (MAM) treatment at the health facility level, strengthen the Ministry of Health's capacity and provide supplements of ready-to-use supplementary food (RUSF) and Super Cereal (CSB) for children under 5 years of age and pregnant and lactating women. By the end of September, the emergency programme will shift to a recovery focus until December 2020. This entails a reduction in the number of districts supported from 39 to 16, focusing on: procurement and delivery of specialized nutritious foods (RUSF and CSB), capacity strengthening of Department of Public Health and a pilot of demand generation through community radio and mobilization of community health workers in six Sofala districts.
- On 21 August, a photo exhibition on Demand Generation for the Nutrition Rehabilitation Programme was inaugurated in Maputo, showcasing the work that WFP and cooperating partners, with the support of DFID and EU, have been doing in support of the Ministry of Health, including on the demand generation component to increase admissions to the programme in districts of Cabo Delgado, Zambézia and Nampula provinces.
- The second cycle of distributions started for the Cyclone Idai response. The total amount dispatched so far reaches 85 mt of RUSF and 100 mt of CSB.
- WFP is also supporting the Pellagra response in Sofala, providing high-energy biscuits (HEBs) to health facilities with the higher number of cases and distributing CSB as a preventive measure, reaching 24,670 families.
- In Cyclone Kenneth affected areas, WFP will be assisting 9,970 beneficiaries in 10 districts (60 health centres) over the next six months with Targeted Supplementary Feeding (TSFP) to treat MAM. Beneficiaries will receive two months rations of super cereal and RUSF. In August, WFP trained 80 health staff on the management of moderate acute malnutrition cases.

School Feeding Programme

- The Ministry of Education and WFP are expanding the School Feeding programme in Idai affected districts. This programme aims at supporting the return of 31,000 affected children back to schools whilst improving their nutritional status and supporting communities that were uprooted to resettle again. The programme will initially be implemented for two trimesters.



Food Security Cluster

- Food security cluster partners are scaling up agriculture interventions in preparation of the planting season (October in South Central areas and November in the North). District level coordination platforms have been created alongside an agriculture working group to harmonize interventions in Nhamatanda, Buzi, and Dondo.
- FSC partners jointly with Nutrition and Health cluster partners are engaged in pellagra prevention activities and Communication with Communities, through an inter cluster task force.
- Fisheries activities are also starting in Cabo Delgado in support of fishermen affected by Cyclone Kenneth.



Logistics Cluster

- The Logistics Cluster has now been deactivated. Since its activation, the Logistics Cluster operation has been shaped based on the needs identified by the humanitarian community and requests for support, and activities implemented in the areas of: Coordination, Information Management (IM), Logistics Services provision – common storage, Mobile Storage Units mobilised, emergency transport.
- While humanitarian needs remain, main logistics gaps which were initially identified were bridged. This was mirrored by a general decline in demands for logistics services, due to local service providers and market being operational again and to the reopening of the main roads to access affected population.
- The Humanitarian Country Team confirmed on 23 July in Maputo that the Logistic Cluster de-activation could start.



Emergency Telecommunications Cluster

- Equipment from ETC partners emergency.lu and Ericsson Response has been collected in Beira to be returned to partners.
- The ETC met with the National Institute of Communications in Mozambique (ARECOM, formerly INCM) ahead of the preparedness workshop to meet stakeholders, request focal points, work on presentations to be delivered during the workshop, send invitations and start work on an action plan together with the National Disaster Management Institute (INGC).
- The Services for Communities (S4C) project to rehabilitate 6 community radio stations in Sofala province as part of the Cyclone Idai response is still planned and installation of equipment is now expected to start in early September.
- The Security Operations Centre (SOC) installed in Macomia district will continue to operate beyond the initial planned period of 3 months.

Linha Verde Initiative

- The inter-agency tollfree hotline Linha Verde has expanded to Cabo Delgado as of 12 August in support of Cyclone Kenneth affected communities, allowing people to request information or report issues concerning the humanitarian response. The hotline also serves as a channel to report on sexual exploitation and abuse and corruption. The protection cluster at the Beira level is working to establish a constructive approach to jointly address issues raised through Linha Verde and other community-based complaints mechanisms (CBCM), also involving INGC and PRM (*Polícia da República de Moçambique*).

Resourcing

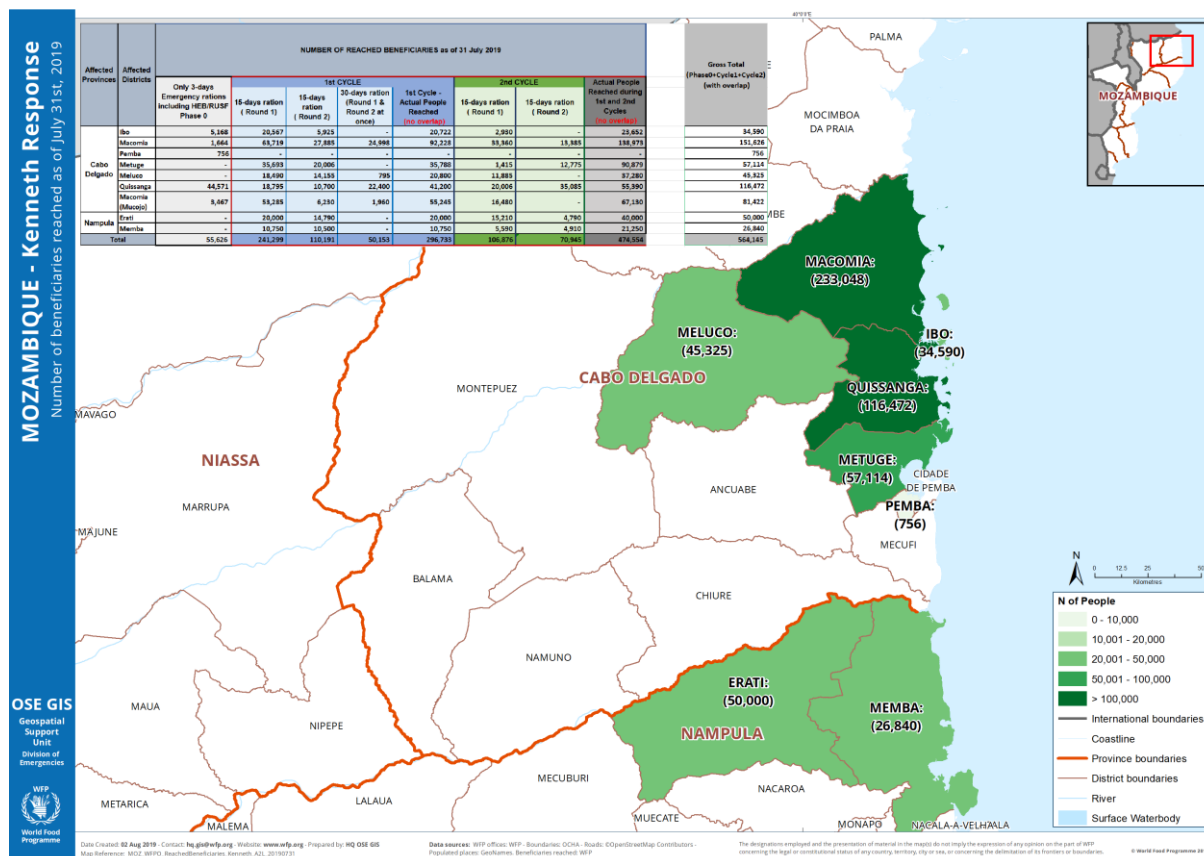
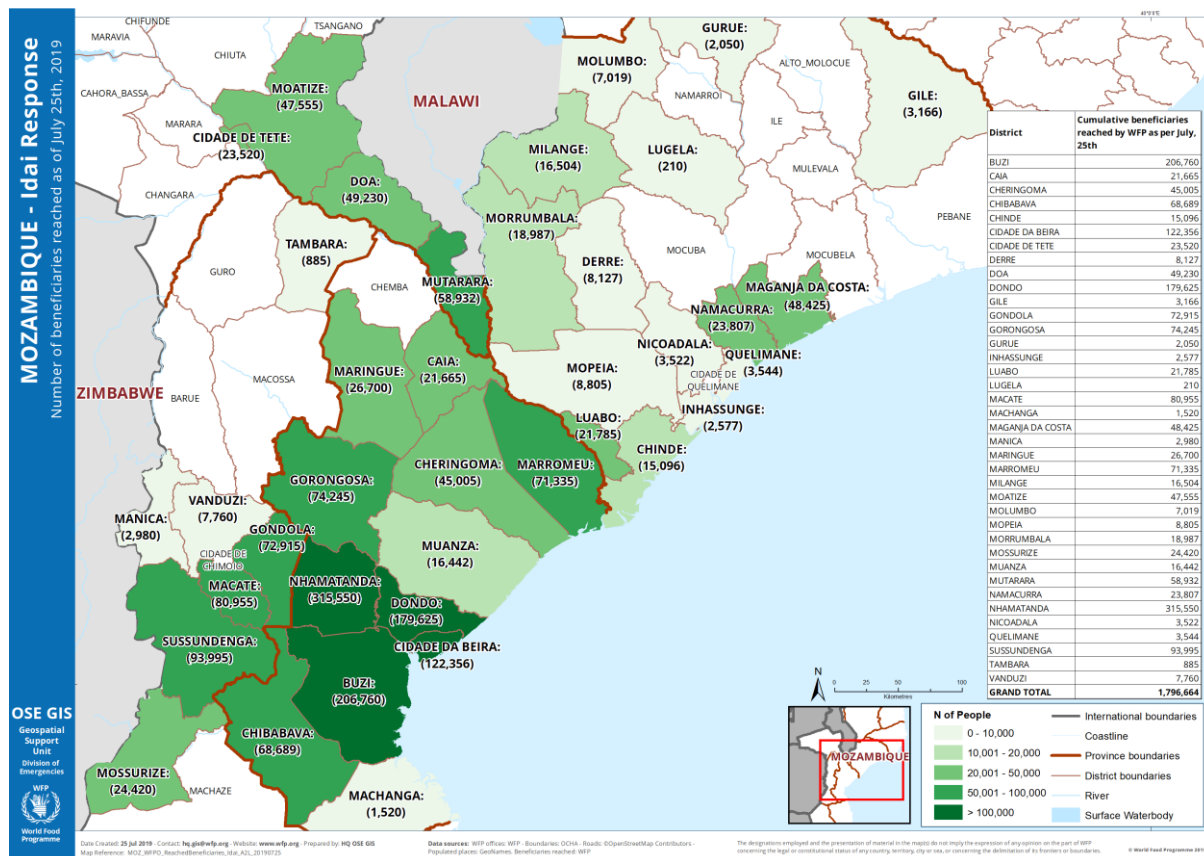
- To initiate life-saving operations, WFP launched an appeal for USD 140 million for the Cyclone Idai emergency response which lasted from March to end of June. Only USD 70.3 million was mobilized for the life-saving phase. For the Cyclone Kenneth response, USD 30 million was required for the humanitarian phase out of which USD 15.1 million were received.
- For implementing recovery interventions in both Cyclone and drought-affected areas from August 2019 to March 2020, which corresponds to the next harvest season, WFP's net funding requirements stand at **USD 97 million**, with a current shortfall of USD 62 million.



Contact info:

- WFP Representative and Country Director
Karin MANENTE
- Operational Information Management Officer
Ariane PETRETTI (ariane.petretti@wfp.org)
- Food Security Cluster
Nicolas BABU (Nicolas.babu@wfp.org)

Further information: <https://www1.wfp.org/emergencies/mozambique-emergency>



Number of people reached by WFP, in collaboration with partners, in provinces affected by Cyclones Idai and Kenneth and floods (as of 25 July).

Donors

Canada, UN CERF, China, European Union (EU), United Kingdom, Germany, Iceland, Ireland, Japan, Kuwait Red Crescent Society, Monaco, Norway, Portugal, Qatar, Spain, South Korea, Switzerland, Sweden, United Arab Emirates, United States and World Bank Group

Private Donors

Herbal Life, Hunger Project, Johannesburg Korean Church; Louis Dreyfus Foundation, Master Card, Mitsui & Co.; Mozambique Rovuma Venture (MRV), Stop Hunger; Syngenta (Sweden); The Big Heart Foundation; The Church of Jesus Christ of Latter-day Saints and Total Mozambique.