



@ WFP/ Hussam AlSaleh

### Highlights

- In December 2019, the national average price of a standard reference food basket increased by 17 percent reaching SYP 33,238 compared to November 2019 (USD 77 at the official exchange rate 434/\$). The y-o-y food basket national average price was 43 percent higher compared to December 2018.

- A general increase in food-item prices was recorded in Idleb in December 2019 as a result of the increased fighting as well as the depreciating Syrian Pound.

- In December 2019, the national average price of diesel increased m-o-m by 19 percent, reaching SYP 381/lt.

- The national average informal exchange rate in December 2019 was SYP 875/USD (up 27 percent m-o-m), while the official exchange rate between the Syrian Pound and the US Dollar has remained unchanged at SYP 434/USD since late 2017.

For further information please contact:

Jan Michiels at  
Jan.Michiels@wfp.org

Pakinam Moussa at  
Pakinam.Moussa@wfp.org

### Standard Food Basket

In December 2019, the national average price of a standard reference food basket<sup>1</sup> increased by 17 percent reaching SYP 33,238 compared to November 2019 (Chart 1). The national average food basket price has increased by 35 percent since June 2019 and by 43 percent since December 2018.

All 14 governorates reported an increasing average reference food basket price in December with the highest month-on-month (m-o-m) increase reported in Idleb (up 38 percent) followed by Quneitra (up 25 percent) and Dar'a (up 24 percent). The increase across all governorates is mainly driven by the depreciation of the Syrian Pound in the informal exchange market which caused an increase in the prices of food items.

The highest average food basket price was reported at SYP 39,910 in Idleb followed by Al-Hasakeh at SYP 35,908 and Lattakia at SYP 35,408. On the other hand, the lowest reported average food basket price in December was still reported in Damascus at SYP 28,343 followed by Rural Damascus at SYP 30,342.

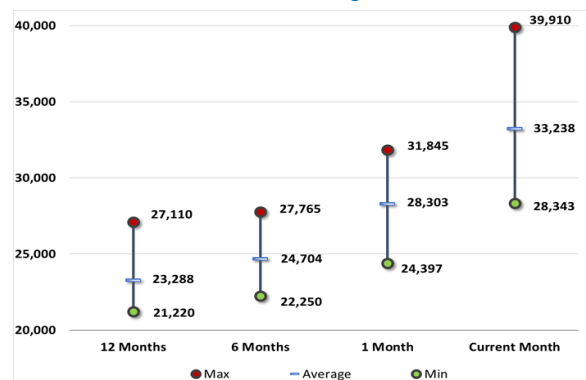
Compared to last year, the price of the reference food basket increased significantly across all 14 governorates. The year-on-year (y-o-y) food basket national average price was 43 percent higher than December 2018. The largest y-o-y increases were recorded in Idleb (up 75 percent) followed by Al-Hasakeh (up 69 percent).

Not only has the average food basket price increased but also the gap between the highest and lowest recorded average food baskets is widening. The gap expanded by 55 percent from SYP 7,448 in November 2019 to SYP 11,567 in December 2019 (Figure 1). Highlighting worsening trade relations across Syria.

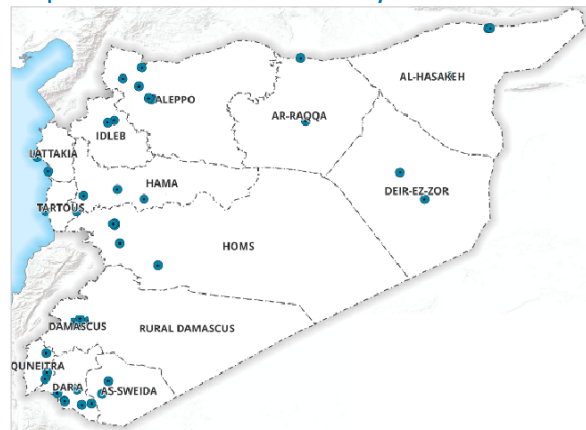
Figure 1: Food basket cost and changes, SYP

Governorate	Price December 2019	1 month change	6 months changes	12 months changes
Aleppo	SYP 31,703	22%	34%	42%
Damascus	SYP 28,343	16%	25%	29%
Dar'a	SYP 34,431	24%	30%	45%
Deir-ez-Zor	SYP 31,622	12%	14%	17%
Hama	SYP 31,320	12%	28%	30%
Al-Hasakeh	SYP 35,908	15%	40%	69%
Homs	SYP 31,130	13%	26%	30%
Idleb	SYP 39,910	38%	67%	75%
Lattakia	SYP 35,408	11%	39%	54%
Ar-Raqqa	SYP 34,833	18%	33%	48%
Rural Damascus	SYP 30,342	18%	36%	31%
As-Sweida	SYP 32,774	10%	43%	47%
Tartous	SYP 34,770	11%	38%	49%
Quneitra	SYP 32,843	25%	35%	40%
Average	SYP 33,238	17%	35%	43%

Chart 1: National min., max. and average food basket cost, SYP



Map 1: Location of markets monitored by WFP



1. The standard food basket is a group of essential food commodities. In Syria, the food basket is set at a group of dry goods providing 1,930 kcal a day for a family of five during a month. The basket includes 28.46 kg bread, 19 kg rice, 19 kg lentils, 5 kg of sugar, and 7 litres of vegetable oil

# Market assessment for Idlib

## Overview

Hostilities in Idlib continue to have devastating consequences for the three million people living in this area, of whom 76 percent are women and children. From May to August 2019, an estimated 400,000 were displaced from northern Hama, southern Idlib and western Aleppo governorates.

According to a situation update report released by OCHA, in December alone 284,000 people are estimated to have fled from their homes in Idlib, mainly from southern Idlib governorate, moving further north away from the hostilities. The towns of Ma'arrat An Nu'man and Saraqab and their surrounding countryside became almost empty as people are fleeing in anticipation of hostilities extending to their area<sup>2</sup>.

A volatile security situation along the access routes north and the shortage of fuel in Idlib area are limiting the movement of civilians fleeing the hostilities. Most of the recently displaced people are going to urban centres such as Idlib city and Ariha, and to the IDP camps in northwestern Idlib. Others are reportedly moving to areas such as Afrin and A'zaz in northern Aleppo.

## Market situation

The Menbij supply route is still closed due to the Turkish buffer zone in North-East Syria. The closure of this route is having a negative impact on the availability of food-items and fuel prices. Markets in Idlib have however been reported to be functional and open. Some traders though are reportedly closing their shops not only because of the security situation but also as a result of the depreciating Syrian Pound pushing up prices.

A general increase in the price of food items was recorded in Idlib in December 2019 as a result of the increased fighting as well as the depreciating Syrian pound.

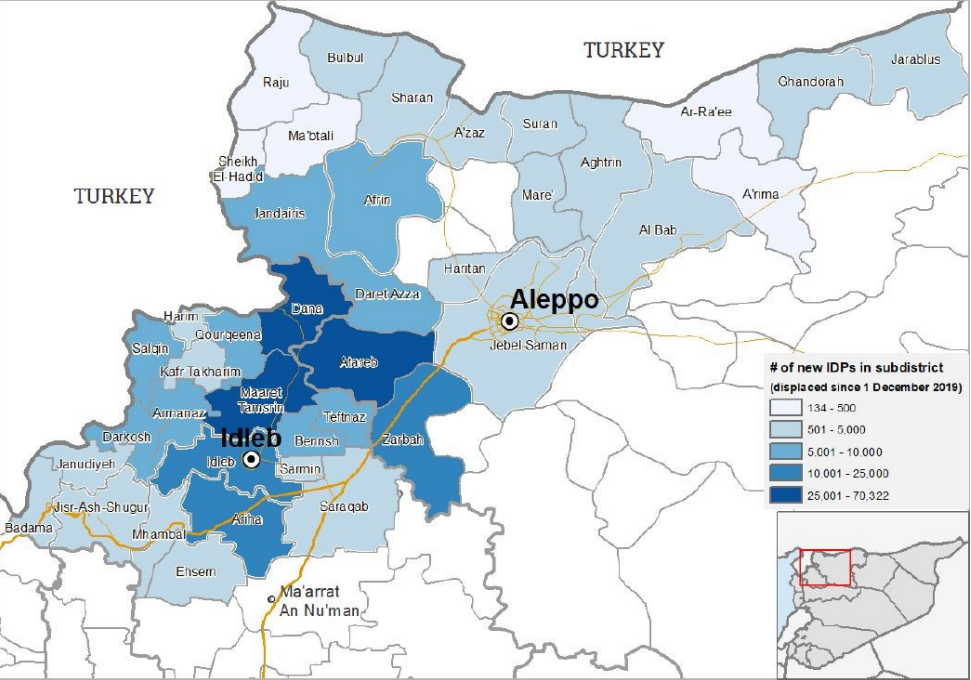
Retail prices of all main cereals recorded an increase between November and December 2019; rice went up by 30 percent reaching SYP 496/Kg; wheat flour went up 37 percent reaching SYP 333/Kg; and bulgur went up by 29 percent reaching SYP 356/Kg (Chart 2).

Other food-items that have recorded an increase between November and December include vegetable oil that reached SYP 660/litre (up 14 percent) and sugar has significantly increased to reach SYP 569/Kg (up 58 percent).

Wholesale prices of main cereals also recorded an increase between November and December 2019; rice went up by three percent reaching SYP 356,250/MT; wheat grain went up 0.68 by percent reaching SYP 186,250/MT; and bulgur went up by 12 percent SYP 275,833/MT (Chart 3).

Non-food item prices have also been negatively affected, especially fuel prices. Between November and December, diesel has recorded an increase of 38 percent reaching 713 SYP/litre. Moreover, the average refill price of butane gas cylinder (25,000 litres) recorded an increase of 25 percent reaching SYP 8,417/litre in December 2019.

Map 2: IDP Displacement Concentration in Idlib in December 2019



Source: CCM Cluster and HNAP

The boundaries and names shown and the designations used on this map do not imply official endorsement or acceptance by the United Nations.

Chart 2: Food-items price changes in Idlib (SYP/Kg or Lt)

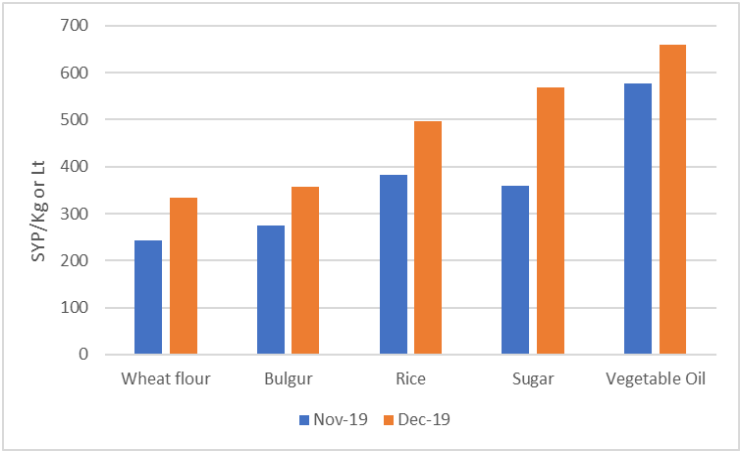
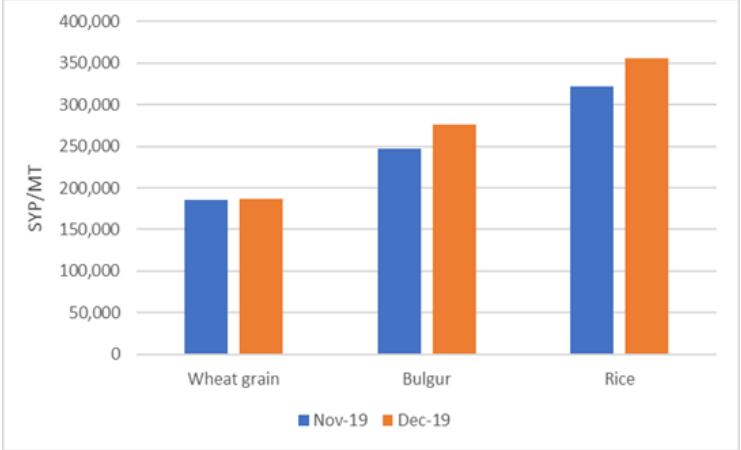


Chart 3: Wholesale price changes in Idlib (SYP/MT)



Source: WFP

2. "Recent Developments in Northwest Syria." OCHA, 2019, reliefweb.int/sites/reliefweb.int/files/resources/nw\_syria\_sitrep3\_20191230.pdf.

## Staple cereals retail prices

### Wheat Flour

In December 2019, the national average retail price of wheat flour throughout Syria increased by 15 percent (m-o-m) reaching SYP 366/Kg. The highest m-o-m increase was reported in Al-Hasakeh (up 42 percent) followed by Idleb (up 38 percent). The highest average recorded wheat flour price was also in Al-Hasakeh at SYP 533/Kg followed by Ar-Raqqa at SYP 433/Kg. Conversely, the lowest average wheat flour price was recorded in Damascus at SYP 303/Kg (up two percent from last month) followed by Idleb at SYP 333/Kg (up 38 percent m-o-m). Broken down by accessibility, hard-to-reach areas reported the highest retail price at SYP 408/Kg (up 24 percent m-o-m), while Idleb reported the lowest retail price at SYP 333/Kg (up 38 percent m-o-m) - Chart 4.

### Rice

The national average retail price of Egyptian white rice increased by 18 percent from last month reaching SYP 604/Kg in December 2019. The highest m-o-m price was still reported in Al-Hasakeh at SYP 838/Kg (up nine percent m-o-m) followed by Dar'a at SYP 788/Kg (up 28 percent m-o-m). The lowest price was reported in As-Sweida at SYP 463/Kg (down two percent m-o-m) followed by Damascus at SYP 492/Kg (up six percent m-o-m). M-o-m, hard-to-reach areas reported an increase of three percent reaching SYP 588/Kg, accessible areas reported an increase of 20 percent reaching SYP 610/Kg and Idleb reported an increase of 29 percent reaching SYP 496/Kg (Chart 5).

### Bulgur

The national average price of bulgur was SYP 434/Kg representing an increase of 14 percent from November 2019. The highest bulgur retail price was reported in Lattakia at SYP 493/Kg (up 23 percent m-o-m) followed by Al-Hasakeh at SYP 492/Kg (up 14 percent m-o-m). The lowest bulgur retail price, on the other hand, was reported in Aleppo at SYP 384/Kg (up 19 percent m-o-m). Accessible areas reported the highest average bulgur prices by accessibility at SYP 440/Kg with an increase of 13 percent from last month. Hard to reach areas reported an increase of 13 percent reaching SYP 413/Kg, and Idleb reported an increase of 29 percent reaching SYP 356/Kg.

### Bread prices

In December 2019, the national average price of public bread (government subsidized bread) decreased by two percent reaching SYP 54/bundle (Chart 7). The decrease is mainly attributed to the cease of subsidizing bread in A'zaz market in Aleppo governorate. Seven governorates reported public bread price of SYP 42/bundle (1.3 kg) while six governorates reported an average of SYP 99/bundle<sup>3</sup>. Moreover, the national average price of commercial bread across Syrian markets was SYP 116/bundle (1.3 kg) increasing by one percent from last month (Chart 8). For commercial bread the highest price was still reported in Idleb at SYP 464/bundle (up 37 percent m-o-m) because of the continued closure of supply routes from North-East Syria resulting in higher fuel prices leading to a decrease in the bread bundle weight. Hama and Homs reported the lowest average price of commercial bread at SYP 63/bundle.

Chart 4: Retail Prices of Wheat Flour, SYP

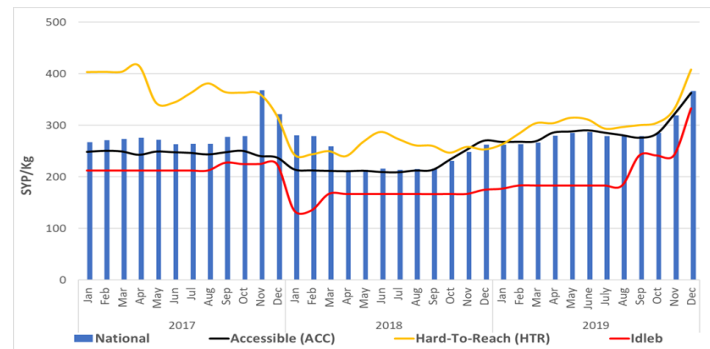


Chart 5: Retail Prices of Rice, SYP

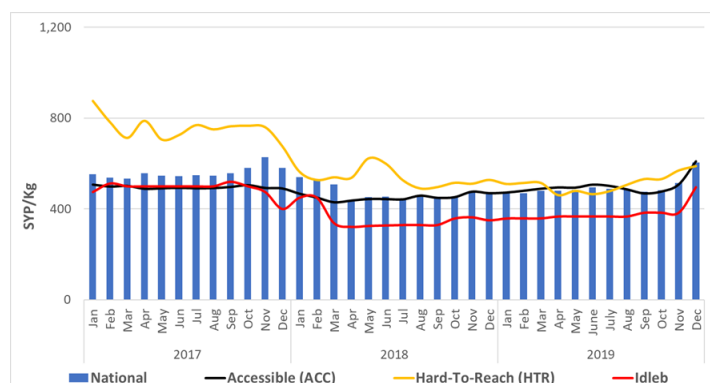


Chart 6: Retail Prices of Bulgur, SYP

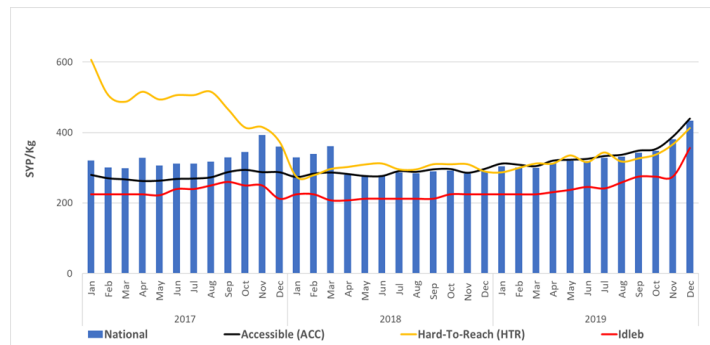


Chart 7: Retail Prices of Subsidized Bread, SYP

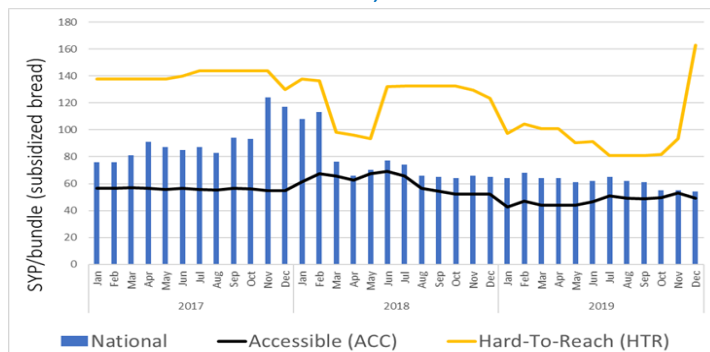
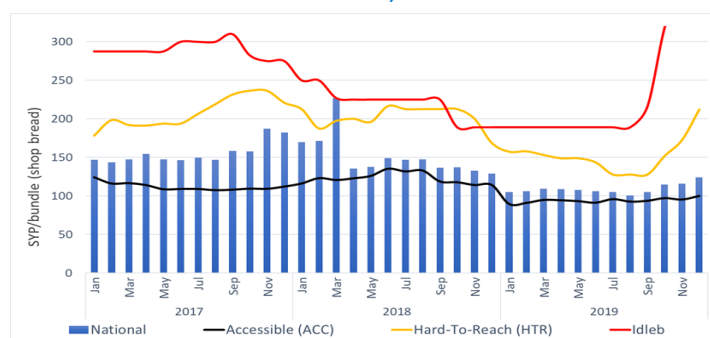


Chart 8: Retail Prices of Commercial Bread, SYP



Source: WFP Field Offices

3. Idleb governorate is excluded from the national average price of public bread because public bread is not subsidized there. Chart 7 has been modified to reflect the national average price without Idleb.

## Diesel and butane gas prices

Diesel prices increased by 19 percent from last month and by 68 percent from December 2018 to reach SYP 381/litre (Chart 9). The highest average price by governorate was reported in Idleb at SYP 713/litre, representing an increase of 38 percent m-o-m. The increase in Idleb is led by supply disruptions as many supply routes from North East Syria are now closed due to the Turkish 'buffer zone' in NES. The lowest average price was reported in Al-Hasakeh at SYP 100/litre (unchanged m-o-m). Broken down by accessibility, the highest average diesel price was recorded in Idleb at SYP 713/litre (up 38 percent m-o-m), while the lowest average diesel price was recorded in accessible areas at SYP 360/litre (up 18 percent from last month). Moreover, the average price in hard-to-reach areas increased by 29 percent reaching SYP 446/litre.

The national average refill price of one butane gas cylinder (25,000 liters) increased by one percent from last month and by 20 percent from November 2019 to reach SYP 4,638/refill. Lattakia reported the highest refill price at 9,000/refill (up 112 percent m-o-m), while Homs reported the lowest refill price at 2,989/refill (up two percent m-o-m). M-o-m, accessible areas reported an average price of SYP 4,252/refill (up 21 percent m-o-m) while hard-to-reach areas reported a price of SYP 6,827/refill (up 39 percent m-o-m). Additionally, Idleb reported an increase of 25 percent from last month reaching SYP 8,417/refill (Chart 10). Y-o-y, hard-to-reach areas reported the highest increase in refill prices (up 80 percent) followed by Idleb (up 64 percent). Accessible areas also reported an increase since December 2018 (up 45 percent).

## Exchange rate

In December 2019, the national average informal exchange rate was SYP 875/USD (up 27 percent m-o-m) while the official exchange rate between the Syrian pound and the US dollar has remained unchanged at SYP 434/USD since late 2017 (Chart 2). The highest informal exchange rate was reported in Al-Hasakeh at SYP 920/USD (up 33 percent m-o-m), while the lowest rate was reported in Damascus and Rural Damascus at SYP 817/USD (up 23 percent and 18 percent m-o-m, respectively) - Table 1. As a result of the depreciation of the Syrian pound, many commodities prices have surged especially those that are directly imported like vegetable oil (up 24 percent m-o-m), rice (up 18 percent m-o-m), sugar (up 21 percent m-o-m) and wheat flour (up 14 percent m-o-m).

## Cereal wholesale prices

In December 2019, the national average wholesale price of cereals increased by 13 percent for wheat grain reaching SYP 258,366/MT and by 22 percent for Egyptian white rice reaching SYP 524,406/MT. The national average wholesale price for bulgur was SYP 384,092/MT (up 16 percent m-o-m). Using the Syrian Central Bank's official exchange rate of SYP 434 per USD, this translates to USD 1,208/MT for Egyptian white rice, USD 885/MT for bulgur grain, and USD 595/MT for wheat grain/MT (Table 2). The wholesale price of wheat on international markets was USD 211/MT, which is 65 percent lower than in Syria.

Chart 9: Diesel Prices, SYP

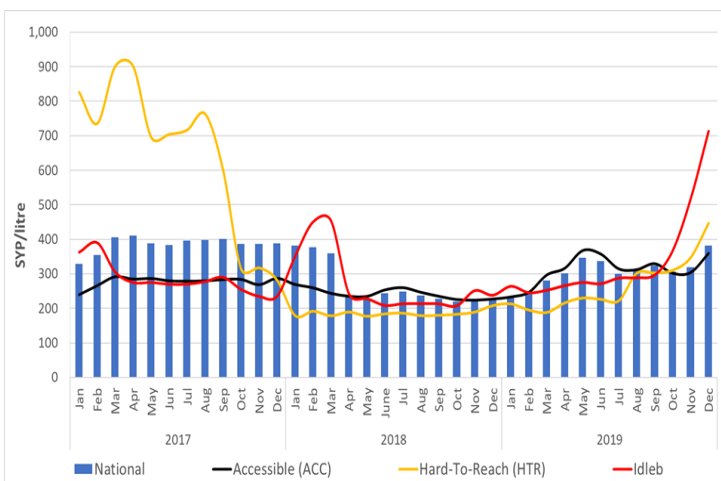


Chart 10: Butane Gas prices, SYP

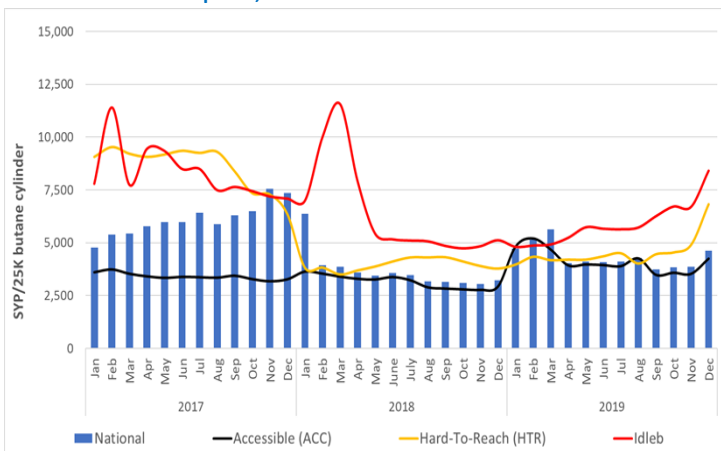


Table 1: Informal market exchange rate, 1 USD to SYP

Governorate	December 2019	% change (m-o-m)	% change (y-o-y)
Aleppo	854	20%	74%
Al-Hasakeh	920	33%	85%
Ar-Raqqa	883	28%	79%
As-Sweida	918	36%	86%
Damascus	817	23%	65%
Dar'a	875	28%	79%
Deir-ez-Zor	890	29%	79%
Hama	900	31%	82%
Homs	903	32%	82%
Idleb	825	19%	69%
Lattakia	893	21%	81%
Quneitra	864	23%	74%
Rural Damascus	817	18%	65%
Tartous	889	32%	80%
National average	875	27%	77%
Official rate	434	0%	0%

Source: WFP Field Offices

## Terms of Trade (ToT)<sup>4</sup>

### ToT between wage labour and wheat flour

The national average non-skilled labour wage was SYP 2,595/day in December 2019 (up ten percent m-o-m). The wage rate was 23 percent above its y-o-y level and 12 percent above levels recorded in June 2019 (Chart 12).

Only three out of the 14 governorates reported unchanged m-o-m daily unskilled wage levels in December. The highest daily non-skilled wages were still reported at SYP 4,500/day in Tartous (unchanged m-o-m) and Lattakia (up six percent m-o-m). Daily non-skilled labour wages were still reported lowest in Al-Hasakeh at SYP 1,583/day (up seven percent m-o-m) followed by As-Sweida at SYP 1,883/day (up 22 percent m-o-m).

The national average ToT between wheat flour and wage labour, a proxy indicator for purchasing power, decreased by four percent m-o-m. Compared to June 2019 (six months ago), the national average ToT between wheat flour and wage labour decreased by 12 percent. It also decreased by 12 percent compared to December 2018 (Chart 13). Highlighting a worsening purchasing power trend.

The recent decrease was due to wheat flour price increasing more than the non-skilled labour wages. Therefore, the national average daily wage of a non-skilled labourer could only buy 7.1 kg of wheat flour, compared to 7.4 kg of wheat flour in November 2019 and 8.1 kg of wheat flour in June 2019 (six months ago).

### ToT between sheep and wheat flour

The national average price of a two-year old alive male sheep increased to SYP 173,938/sheep in December 2019, up 24 percent m-o-m (Chart 14). The significant increase in sheep prices is linked to the depreciation of the Syrian Pound that caused fodder prices to go up.

Hama reported the highest average price across Syria at SYP 225,000/sheep (up 55 percent m-o-m) followed by Homs at SYP 220,556/sheep (up 53 percent m-o-m) and Dar'a at SYP 201,833/sheep (up 20 percent m-o-m). As-Sweida reported the lowest average price for an alive two-year old male sheep at SYP 127,500/sheep (up 11 percent m-o-m) followed by Al-Hasakeh at 133,333 (up 25 percent m-o-m).

In December 2019, the ToT between an alive two-year old male sheep and wheat flour was 475 kg/sheep (up eight percent m-o-m). Highlighting an improvement in the exchange for livestock owners who could buy on average eight percent more kgs of wheat compared to November 2019.

Broken-down by accessibility, accessible areas reported an increase of 13 percent from November 2019, reaching 488 kg of wheat flour/sheep and hard-to-reach areas reported a decrease of 16 percent reaching SYP 353 of wheat flour/sheep. Conversely, Idlib reported a decrease of 23 percent m-o-m reaching 512 kg of wheat flour/sheep (Chart 15).

Compared to December 2018, accessible areas reported an increase in wheat flour/sheep ToT of 34 percent, hard-to-reach areas reported an increase of 27 percent and Idlib reported an increase of three percent due to increases in livestock prices surpassing wheat flour prices.

Chart 12: Daily wage for unskilled labour, SYP

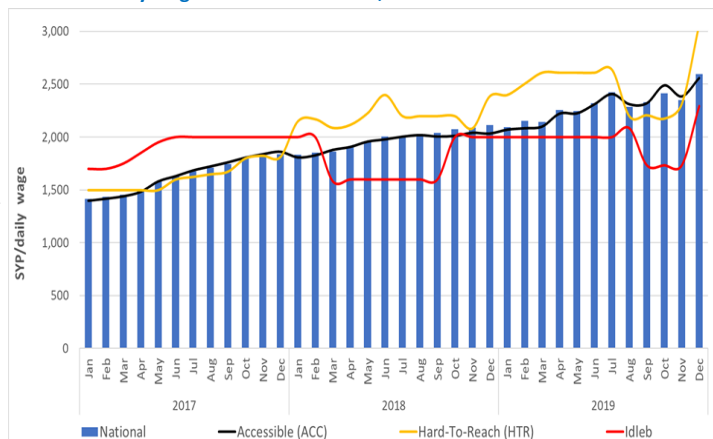


Chart 13: Terms of Trade (ToT) between wheat flour and wage labour

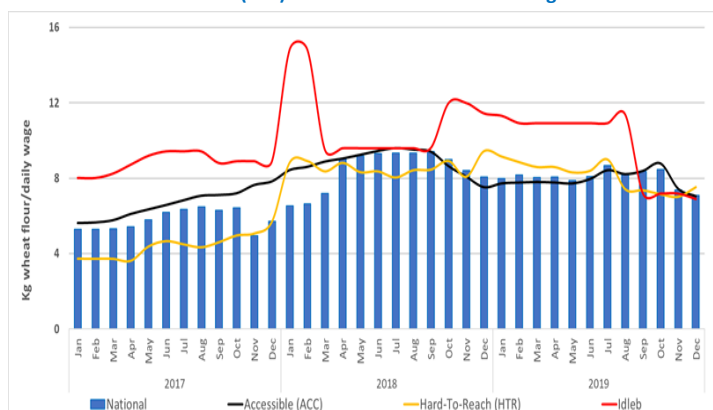


Chart 14: Price of livestock, SYP/one 2Y old sheep

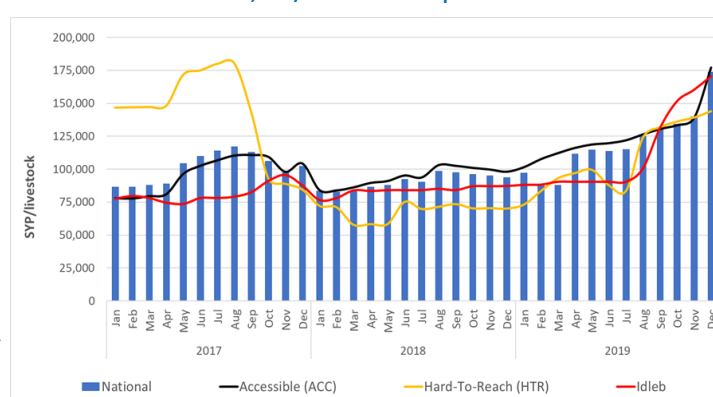
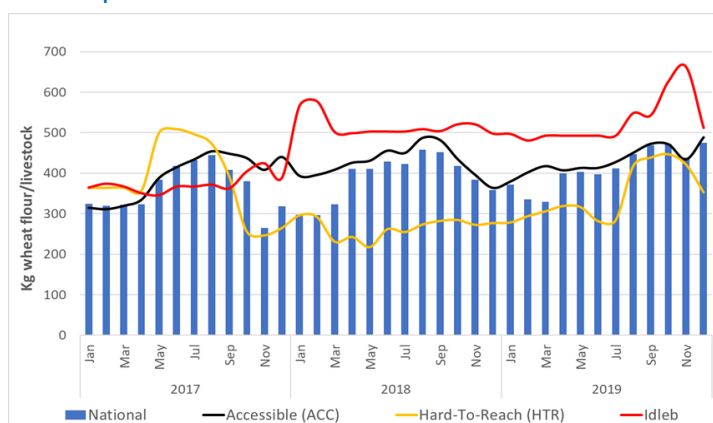


Chart 15: Terms of Trade (ToT) between wheat flour and the price of a 2 year old sheep



Source: WFP Field Offices

4. The ToT are proxy indicators of the purchasing power of households that rely on livestock and/or casual labour as their main source of income for the purchase of cereals from local markets. ToT are important components of food security analysis. Changes in the terms of trade between wages/livestock and staple food commodities are indicative of the trends in purchasing power and the impact on the food security situation of households dependent on food purchases through income from daily wage labour and/or the sale of livestock.

Commodity	Governorate	Current Price	Price change	Price change	Price change	Average Change	Average Change	Average Change	Commodity	Governorate	Current Price	Price change	Price change	Price change	Average Change	Average Change	Average Change
			1M (%)	6 M (%)	12 M (%)	1M	6 M	12 M				1M (%)	6 M (%)	12 M (%)	1M	6 M	12 M
Bread Public (1.3 kg)	Aleppo	156	4	34	51	↗	↑	↑	Date (kg)	Aleppo	988	20	14	18	↗	↗	↗
	Damascus	42	-	-16	-16	↔	↓	↓		Damascus	1,144	4	-16	28	↗	↓	↑
	Dar'a	52	5	-25	-17	↗	↓	↓		Dar'a	1,339	21	45	58	↗	↑	↑
	Deir-ez-Zor	75	79	50	-8	↑	↑	↓		Deir-ez-Zor	1,150	11	19	35	↗	↗	↑
	Hama	42	-	-16	-16	↔	↓	↓		Hama	1,250	4	25	39	↗	↑	↑
	Al-Hasakeh	42	-	-16	-16	↔	↓	↓		Al-Hasakeh	1,133	11	48	79	↗	↑	↑
	Homs	42	-	-16	-16	↔	↓	↓		Homs	1,247	5	25	39	↗	↑	↑
	Idleb	464	37	132	132	↑	↑	↑		Idleb	1,300	19	44	77	↗	↑	↑
	Lattakia	42	-	-16	-16	↔	↓	↓		Lattakia	1,550	11	55	55	↗	↑	↑
	Quneitra	42	-	-16	-16	↔	↓	↓		Quneitra	1,347	37	51	54	↑	↑	↑
	Ar-Raqqa	71	-1	5	9	↓	↗	↗		Ar-Raqqa	822	1	-3	17	↗	↓	↑
	Rural Damascus	46	-	-8	-39	↔	↓	↓		Rural Damascus	1,146	-	15	32	↔	↗	↑
	As-Sweida	46	-	-8	-8	↔	↓	↓		As-Sweida	1,354	-	12	34	↔	↗	↑
	Tartous	42	-	-16	-16	↔	↓	↓		Tartous	1,275	2	28	28	↗	↑	↑
	Bread Shops (1.3 kg)	Aleppo	276	7	19	25	↗	↗		↑	Diesel (L)	Aleppo	521	22	55	86	↗
Damascus		84	-	-16	-16	↔	↓	↓	Damascus	357		3	-2	59	↗	↓	↑
Dar'a		118	-7	-33	-29	↓	↓	↓	Dar'a	397		13	-8	58	↗	↓	↑
Deir-ez-Zor		130	19	-9	-31	↗	↓	↓	Deir-ez-Zor	375		-	49	76	↔	↑	↑
Hama		63	-	-16	-16	↔	↓	↓	Hama	400		-	78	78	↔	↑	↑
Al-Hasakeh		126	-	-16	-16	↔	↓	↓	Al-Hasakeh	100		-	22	17	↔	↗	↗
Homs		63	-	-16	-16	↔	↓	↓	Homs	388		88	72	72	↑	↑	↑
Idleb		464	22	106	106	↗	↑	↑	Idleb	713		38	163	199	↑	↑	↑
Lattakia		84	-	-10	12	↔	↓	↗	Lattakia	450		-	50	112	↔	↑	↑
Quneitra		70	2	-13	8	↗	↓	↗	Quneitra	257		-	-51	19	↔	↓	↗
Ar-Raqqa		84	-	-33	-33	↔	↓	↓	Ar-Raqqa	180		2	76	102	↗	↑	↑
Rural Damascus		84	-	-16	-16	↔	↓	↓	Rural Damascus	318		-12	-17	26	↓	↓	↑
As-Sweida		92	-	5	-8	↔	↗	↓	As-Sweida	343		-14	-52	-2	↓	↓	↓
Tartous		105	67	40	40	↑	↑	↑	Tartous	425		-	11	100	↔	↗	↑
Bulgur (kg)		Aleppo	384	19	24	57	↗	↗	↑	Dollar exchange rate (in the parallel market, \$1)		Aleppo	854	20	46	74	↗
	Damascus	417	23	37	42	↗	↑	↑	Damascus		817	23	39	65	↗	↑	↑
	Dar'a	456	33	59	59	↑	↑	↑	Dar'a		875	28	49	79	↑	↑	↑
	Deir-ez-Zor	425	0	19	42	↗	↗	↑	Deir-ez-Zor		890	29	53	46	↑	↑	↑
	Hama	430	1	37	48	↗	↑	↑	Hama		900	31	51	82	↑	↑	↑
	Al-Hasakeh	492	14	46	83	↗	↑	↑	Al-Hasakeh		920	33	57	85	↑	↑	↑
	Homs	430	2	35	23	↗	↑	↗	Homs		903	32	52	82	↑	↑	↑
	Idleb	356	30	45	58	↑	↑	↑	Idleb		825	19	41	69	↗	↑	↑
	Lattakia	493	23	46	43	↗	↑	↑	Lattakia		893	21	49	81	↗	↑	↑
	Quneitra	419	24	52	60	↗	↑	↑	Quneitra		864	23	47	74	↗	↑	↑
	Ar-Raqqa	461	13	42	65	↗	↑	↑	Ar-Raqqa		883	28	53	79	↑	↑	↑
	Rural Damascus	468	16	-16	67	↗	↓	↑	Rural Damascus		817	18	38	65	↗	↑	↑
	As-Sweida	442	-	-	36	↔	↔	↑	As-Sweida		918	36	55	86	↑	↑	↑
	Tartous	438	9	27	23	↗	↑	↗	Tartous		889	32	49	80	↑	↑	↑
	Butane Cylinder (25 kg)	Aleppo	7,493	-	78	69	↔	↑	↑		Eggs (carton)	Aleppo	1,311	24	36	14	↗
Damascus		3,711	18	2	29	↗	↗	↑	Damascus	1,333		13	20	13	↗	↗	↗
Dar'a		6,258	32	88	120	↑	↑	↑	Dar'a	1,440		28	46	20	↑	↑	↗
Deir-ez-Zor		5,250	-	76	82	↔	↑	↑	Deir-ez-Zor	1,300		4	8	14	↗	↗	↗
Hama		3,000	-	-54	11	↔	↓	↗	Hama	1,550		29	27	17	↑	↑	↗
Al-Hasakeh		2,700	-1	12	17	↓	↓	↗	Al-Hasakeh	1,525		8	21	24	↑	↗	↗
Homs		2,989	2	-54	11	↗	↓	↗	Homs	1,531		28	15	13	↑	↗	↗
Idleb		6,708	-	48	64	↔	↑	↑	Idleb	988		14	-5	-8	↗	↓	↓
Lattakia		9,000	112	98	210	↑	↑	↑	Lattakia	1,500		13	8	5	↗	↗	↗
Quneitra		3,000	-3	2	3	↓	↗	↗	Quneitra	1,439		31	30	30	↑	↑	↑
Ar-Raqqa		5,056	-21	12	37	↓	↗	↑	Ar-Raqqa	1,331		-	9	17	↔	↗	↗
Rural Damascus		3,676	8	3	13	↗	↗	↗	Rural Damascus	1,371		15	29	16	↗	↑	↗
As-Sweida		2,700	-	-	-	↔	↔	↔	As-Sweida	1,317		9	11	3	↗	↗	↗
Tartous		3,000	-	-8	3	↔	↓	↗	Tartous	1,500		15	25	5	↗	↑	↗
Cheese (kg)		Aleppo	7,493	7	44	34	↗	↑	↑	Eggplant (1kg)		Aleppo	309	105	38	13	↑
	Damascus	3,711	2	5	6	↗	↗	↗	Damascus		228	-	-25	-23	↔	↓	↓
	Dar'a	6,258	10	49	35	↗	↑	↑	Dar'a		196	57	-35	-18	↑	↓	↓
	Deir-ez-Zor	5,250	-11	30	8	↓	↑	↗	Deir-ez-Zor		200	-11	-30	-19	↓	↓	↓
	Hama	3,000	6	44	28	↗	↑	↑	Hama		150	-	-44	-50	↔	↓	↓
	Al-Hasakeh	2,700	7	46	45	↗	↑	↑	Al-Hasakeh		338	27	9	12	↑	↗	↗
	Homs	2,989	6	36	43	↗	↑	↑	Homs		150	-	-36	-49	↔	↓	↓
	Idleb	8,417	12	23	34	↗	↗	↑	Idleb		425	271	37	70	↑	↑	↑
	Lattakia	9,000	2	51	62	↗	↑	↑	Lattakia		575	109	48	92	↑	↑	↑
	Quneitra	3,000	43	105	63	↑	↑	↑	Quneitra		265	37	30	78	↑	↑	↑
	Ar-Raqqa	5,056	7	92	75	↗	↑	↑	Ar-Raqqa		333	92	66	48	↑	↑	↑
	Rural Damascus	3,676	4	10	9	↗	↗	↗	Rural Damascus		163	-2	-38	-37	↓	↓	↓
	As-Sweida	2,700	5	-4	-1	↗	↓	↓	As-Sweida		213	26	-46	17	↑	↓	↗
	Tartous	3,000	-	68	50	↔	↑	↓	Tartous		263	50	-13	-13	↑	↓	↓
	Chickpeas (kg)	Aleppo	489	17	9	-8	↗	↗	↓		Fish (tuna, canned)	Aleppo	499	12	32	35	↗
Damascus		503	-	-20	-20	↔	↓	↓	Damascus	553		-	24	20	↔	↗	↗
Dar'a		350	-17	-33	-23	↓	↓	↓	Dar'a	629		32	41	50	↑	↑	↑
Deir-ez-Zor		550	-16	-1	-20	↓	↓	↓	Deir-ez-Zor	518		1	7	51	↗	↗	↑
Hama		500	11	-27	-13	↗	↓	↓	Hama	600		-	25	33	↔	↑	↑
Al-Hasakeh		658	15	35	35	↗	↑	↑	Al-Hasakeh	625		14	65	73	↗	↑	↑
Homs		497	9	-29	-17	↗	↓	↓	Homs	600		1	25	33	↗	↑	↑
Idleb		542	39	33	33	↑	↑	↑	Idleb	638		17	59	59	↗	↑	↑
Lattakia		475	6	9	-1	↗	↗	↓	Lattakia	650		30	30	41	↑	↑	↑
Quneitra		372	13	20	20	↗	↗	↗	Quneitra	531		32	52	59	↑	↑	↑
Ar-Raqqa		578	8	16	33	↗	↗	↑	Ar-Raqqa	604		17	48	59	↗	↑	↑
Rural Damascus		594	10	1	-7	↗	↗	↓	Rural Damascus	605		17	38	25	↗	↑	↗
As-Sweida		554	6	-11	0	↗	↓	↗	As-Sweida	608		11	23	51	↗	↗	↑
Tartous		619	15	38	30	↗	↑	↑	Tartous	600		7	20	20	↗	↗	↗
Key:		↑	Price increase equal to or greater than 25 percent														
	↗	Price increase between 0.1 and 25 percent															
	↔	No price change															
	↓	Price decrease below normal price fluctuation															

Commodity	Governorate	Current Price	Price change 1M (%)	Price change 6 M (%)	Price change 12 M (%)	Average Change 1M	Average Change 6 M	Average Change 12 M	Commodity	Governorate	Current Price	Price change 1M (%)	Price change 6 M (%)	Price change 12 M (%)	Average Change 1M	Average Change 6 M	Average Change 12 M
Iodised salt (kg)	Aleppo	204	6	36	51	↗	↗	↗	Sheep 2Y old Male	Aleppo	146,810	18	51	79	↗	↗	↗
	Damascus	131	1	11	12	↗	↗	↗		Damascus	137,639	13	16	64	↗	↗	↗
	Dar'a	139	-	-7	-	↔	↔	↔		Dar'a	201,833	20	33	56	↗	↗	↗
	Deir-ez-Zor	100	-	-	-11	↔	↔	↘		Deir-ez-Zor	148,333	33	77	162	↗	↗	↗
	Hama	120	0	-	-20	↔	↔	↘		Hama	225,000	55	84	99	↗	↗	↗
	Al-Hasakeh	100	-	0	0	↔	↔	↔		Al-Hasakeh	133,333	25	61	124	↗	↗	↗
	Homs	120	-	-20	-20	↔	↘	↘		Homs	220,556	53	79	90	↗	↗	↗
	Idleb	83	43	4	4	↗	↗	↗		Idleb	170,583	6	89	96	↗	↗	↗
	Lattakia	375	-	275	226	↔	↗	↗		Lattakia	167,000	3	20	59	↗	↗	↗
	Quneitra	133	25	30	30	↗	↗	↗		Quneitra	166,000	11	48	41	↗	↗	↗
	Ar-Raqqa	100	-	0	0	↔	↔	↔		Ar-Raqqa	136,667	2	48	113	↗	↗	↗
	Rural Damascus	138	-	18	19	↔	↗	↗		Rural Damascus	146,929	14	23	86	↗	↗	↗
	As-Sweida	158	1	13	6	↔	↗	↗		As-Sweida	127,500	11	27	50	↗	↗	↗
	Tartous	250	184	186	233	↗	↗	↗		Tartous	187,500	8	37	83	↗	↗	↗
	Aleppo	417	23	21	20	↗	↗	↗		Aleppo	463	23	61	84	↗	↗	↗
	Damascus	450	19	23	23	↗	↗	↗		Damascus	486	50	68	100	↗	↗	↗
Lentils (kg)	Dar'a	375	7	-12	5	↗	↘	↗	Sugar (kg)	Dar'a	504	41	73	98	↗	↗	↗
	Deir-ez-Zor	475	-2	-17	19	↘	↘	↗		Deir-ez-Zor	438	14	40	17	↗	↗	↗
	Hama	500	11	28	24	↗	↗	↗		Hama	425	-6	61	71	↘	↗	↗
	Al-Hasakeh	479	14	28	60	↗	↗	↗		Al-Hasakeh	533	19	47	64	↗	↗	↗
	Homs	497	12	24	23	↗	↗	↗		Homs	426	-3	68	68	↘	↗	↗
	Idleb	517	59	55	55	↗	↗	↗		Idleb	569	58	92	135	↗	↗	↗
	Lattakia	625	14	39	67	↗	↗	↗		Lattakia	425	31	48	59	↗	↗	↗
	Quneitra	404	12	12	9	↗	↗	↗		Quneitra	475	52	75	102	↗	↗	↗
	Ar-Raqqa	653	22	54	76	↗	↗	↗		Ar-Raqqa	494	16	47	58	↗	↗	↗
	Rural Damascus	460	12	27	21	↗	↗	↗		Rural Damascus	448	30	62	83	↗	↗	↗
	As-Sweida	429	7	17	-5	↗	↗	↘		As-Sweida	472	26	31	87	↗	↗	↗
	Tartous	600	9	50	63	↗	↗	↗		Tartous	438	27	51	64	↗	↗	↗
Meat (beef, kg)	Aleppo	4,537	9	19	46	↗	↗	↗	Tomato (kg)	Aleppo	345	93	80	26	↗	↗	↗
	Damascus	4,750	5	7	19	↗	↗	↗		Damascus	257	4	-19	15	↗	↘	↗
	Dar'a	5,172	12	14	35	↗	↗	↗		Dar'a	333	186	40	48	↗	↗	↗
	Deir-ez-Zor	4,750	-7	20	53	↘	↗	↗		Deir-ez-Zor	325	42	16	24	↗	↗	↗
	Hama	5,700	21	15	68	↗	↗	↗		Hama	450	29	85	78	↗	↗	↗
	Al-Hasakeh	5,625	2	34	80	↗	↗	↗		Al-Hasakeh	442	43	63	39	↗	↗	↗
	Homs	5,644	20	14	41	↗	↗	↗		Homs	444	31	52	45	↗	↗	↗
	Idleb	3,733	4	32	63	↗	↗	↗		Idleb	475	90	-5	-5	↗	↘	↘
	Lattakia	6,600	16	32	54	↗	↗	↗		Lattakia	413	38	38	106	↗	↗	↗
	Quneitra	5,333	8	33	47	↗	↗	↗		Quneitra	269	189	6	36	↗	↗	↗
	Ar-Raqqa	2,994	5	-9	17	↗	↘	↗		Ar-Raqqa	290	23	19	12	↗	↗	↗
	Rural Damascus	5,210	13	15	35	↗	↗	↗		Rural Damascus	240	20	-11	20	↗	↘	↗
Milk (L)	As-Sweida	5,175	13	9	36	↗	↗	↗	Unskilled Labor wage	As-Sweida	221	34	-33	-1	↗	↘	↘
	Tartous	6,000	20	20	36	↗	↗	↗		Tartous	375	67	58	58	↗	↗	↗
	Aleppo	268	9	3	18	↗	↗	↗		Aleppo	3,202	11	-15	16	↗	↘	↗
	Damascus	283	5	12	8	↗	↗	↗		Damascus	2,483	8	18	24	↗	↗	↗
	Dar'a	247	3	24	20	↗	↗	↗		Dar'a	2,333	44	44	78	↗	↗	↗
	Deir-ez-Zor	250	-17	21	14	↘	↗	↗		Deir-ez-Zor	3,000	20	24	40	↗	↗	↗
	Hama	275	0	10	22	↔	↗	↗		Hama	2,000	0	0	11	↔	↔	↗
	Al-Hasakeh	358	2	23	28	↗	↗	↗		Al-Hasakeh	1,583	7	9	39	↗	↗	↗
	Homs	275	1	22	22	↗	↗	↗		Homs	2,000	-1	0	0	↘	↔	↔
	Idleb	242	12	26	49	↗	↗	↗		Idleb	2,292	32	15	15	↗	↗	↗
	Lattakia	375	25	25	50	↗	↗	↗		Lattakia	4,250	6	13	42	↗	↗	↗
	Quneitra	233	16	54	36	↗	↗	↗		Quneitra	2,167	8	18	18	↗	↗	↗
Oil (L)	Ar-Raqqa	283	17	17	24	↗	↗	↗	Wheat Flour (kg)	Ar-Raqqa	2,667	0	9	17	↔	↗	↗
	Rural Damascus	311	9	22	20	↗	↗	↗		Rural Damascus	3,050	12	22	36	↗	↗	↗
	As-Sweida	392	16	55	74	↗	↗	↗		As-Sweida	1,883	22	27	8	↗	↗	↗
	Tartous	300	4	-8	26	↗	↘	↗		Tartous	4,500	0	13	29	↔	↗	↗
	Aleppo	972	30	77	71	↗	↗	↗		Aleppo	362	20	27	54	↗	↗	↗
	Damascus	975	23	50	70	↗	↗	↗		Damascus	303	2	8	13	↗	↗	↗
	Dar'a	1,192	32	83	101	↗	↗	↗		Dar'a	346	11	15	18	↗	↗	↗
	Deir-ez-Zor	1,050	34	58	65	↗	↗	↗		Deir-ez-Zor	425	19	22	62	↗	↗	↗
	Hama	1,150	10	83	84	↗	↗	↗		Hama	350	6	27	2	↗	↗	↗
	Al-Hasakeh	1,004	39	75	114	↗	↗	↗		Al-Hasakeh	533	42	113	141	↗	↗	↗
	Homs	1,144	10	73	88	↗	↗	↗		Homs	349	8	36	28	↗	↗	↗
	Idleb	660	14	37	58	↗	↗	↗		Idleb	333	38	82	90	↗	↗	↗
Parsley (packet)	Lattakia	1,225	20	88	96	↗	↗	↗	White beans (kg)	Lattakia	400	5	14	28	↗	↗	↗
	Quneitra	1,079	34	60	94	↗	↗	↗		Quneitra	394	31	49	108	↗	↗	↗
	Ar-Raqqa	806	39	50	65	↗	↗	↗		Ar-Raqqa	433	17	58	76	↗	↗	↗
	Rural Damascus	998	38	59	82	↗	↗	↗		Rural Damascus	334	11	18	25	↗	↗	↗
	As-Sweida	1,738	22	136	167	↗	↗	↗		As-Sweida	393	27	19	46	↗	↗	↗
	Tartous	1,125	13	73	80	↗	↗	↗		Tartous	350	6	10	12	↗	↗	↗
	Aleppo	96	87	114	125	↗	↗	↗		Aleppo	882	31	70	47	↗	↗	↗
	Damascus	44	7	13	29	↗	↗	↗		Damascus	1,075	8	28	84	↗	↗	↗
	Dar'a	83	0	-5	-5	↔	↘	↘		Dar'a	1,183	8	373	238	↗	↗	↗
	Deir-ez-Zor	100	14	100	20	↗	↗	↗		Deir-ez-Zor	750	0	8	17	↔	↗	↗
	Hama	100	100	100	100	↗	↗	↗		Hama	1,150	0	44	23	↔	↗	↗
	Al-Hasakeh	100	0	46	36	↔	↗	↗		Al-Hasakeh	1,075	25	62	113	↗	↗	↗
Rice (kg)	Homs	97	63	94	94	↗	↗	↗	Yogurt (kg)	Homs	1,150	2	29	45	↗	↗	↗
	Idleb	75	33	50	200	↗	↗	↗		Idleb	475	50	104	104	↗	↗	↗
	Lattakia	100	0	0	100	↔	↔	↗		Lattakia	1,013	23	31	50	↗	↗	↗
	Quneitra	40	2	14	24	↗	↗	↗		Quneitra	661	6	-20	31	↗	↘	↗
	Ar-Raqqa	100	33	0	-4	↗	↔	↘		Ar-Raqqa	1,333	21	112	154	↗	↗	↗
	Rural Damascus	45	2	1	56	↗	↗	↗		Rural Damascus	1,196	25	44	110	↗	↗	↗
	As-Sweida	50	-8	-14	41	↘	↘	↗		As-Sweida	967	8	16	46	↗	↗	↗
	Tartous	100	0	14	100	↔	↔	↗		Tartous	1,400	24	70	115	↗	↗	↗
	Aleppo	539	24	31	27	↗	↗	↗		Aleppo	356	6	17	20	↗	↗	↗
	Damascus	492	6	12	13	↗	↗	↗		Damascus	333	-1	11	10	↘	↗	↗
	Dar'a	788	28	43	53	↗	↗	↗		Dar'a	307	12	17	17	↗	↗	↗
	Deir-ez-Zor	575	5	19	1	↗	↗	↗		Deir-ez-Zor	250	-29	-13	-42	↘	↘	↘
Hama	550	22	6	11	↗	↗	↗	Hama	350	0	25	17	↔	↗	↗		
Al-Hasakeh	838	9	41	73	↗	↗	↗	Al-Hasakeh	400	3	26	26	↗	↗	↗		
Homs	544	22	5	10	↗	↗	↗	Homs	350	-3	35	35	↘	↗	↗		
Idleb	496	29	35	42	↗	↗	↗	Idleb	294	1	4	61	↗	↗	↗		
Lattakia	613	2	23	32	↗	↗	↗	Lattakia	425	31	28	42	↗	↗	↗		
Quneitra	739	27	40	42	↗	↗	↗	Quneitra	333	52	66	66	↗	↗	↗		
Ar-Raqqa	647	11	15	26	↗	↗	↗	Ar-Raqqa	639	0	102	32	↔	↗	↗		
Rural Damascus	596	16	39	30	↗	↗	↗	Rural Damascus	319	6	14	12	↗	↗	↗		
As-Sweida	463	-2	17	35	↘	↗	↗	As-Sweida	269	8	8	-2	↗	↗	↘		
Tartous	638	11	19	31	↗	↗	↗	Tartous	400	19	33	33	↗	↗	↗		