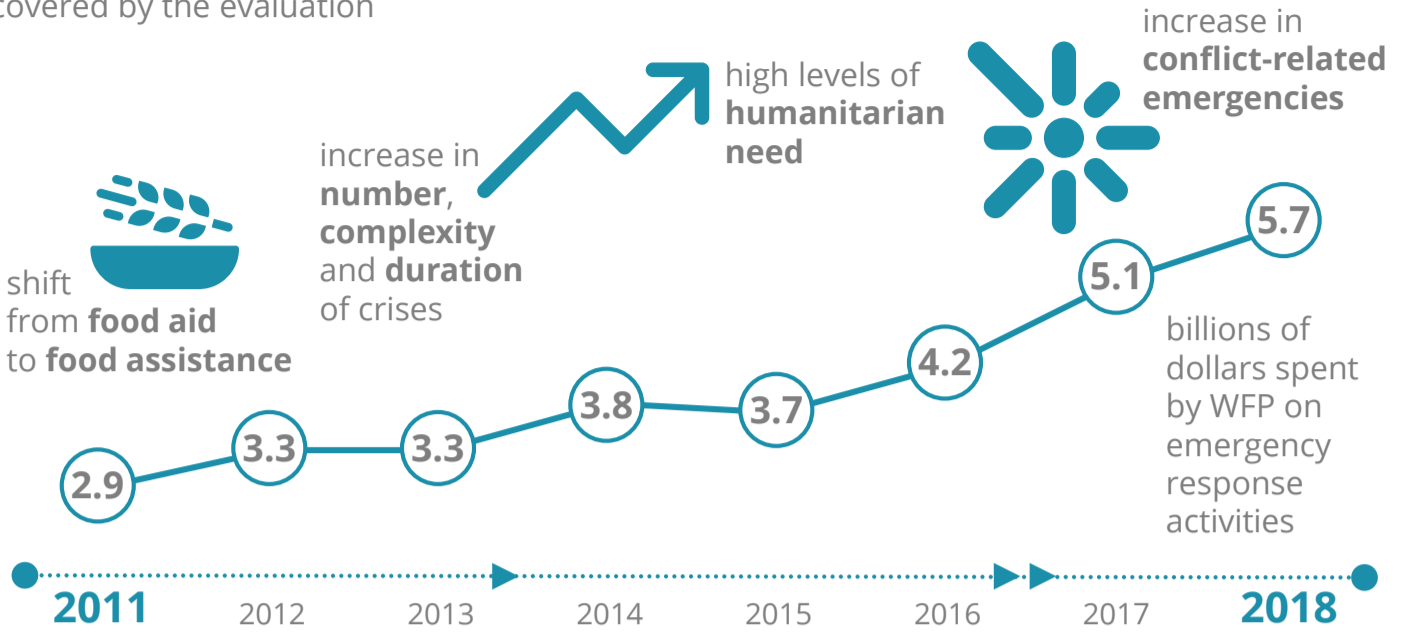


Strategic Evaluation of WFP's Capacity to Respond to Emergencies

The **HUMANITARIAN CONTEXT** has changed significantly during the period covered by the evaluation



the **EVALUATION** covers the full range of WFP emergency responses

preparedness for response

immediate response

longer-term response

review of WFP evaluation and lessons learned reports covering major emergencies since 2011

44

400

interviews with internal and external stakeholders



CONCLUSIONS

review of WFP evaluation and lessons learned reports



WFP's ability to respond to emergencies has increased but capacities, notably at the individual level, are over-stretched



WFP investments in surge mechanisms, training and duty of care have reaped some success, but constraints in developing skills risk undermining the quality of emergency responses



The lack of a WFP-wide emergency response framework constrains planning for the development of capacities



Efficiency and coverage are prioritized by WFP above other aspects of a high quality emergency response



Limitations in corporate monitoring systems constrain oversight of WFP response effectiveness



WFP's contribution to sector-wide responses is highly valued and contributes to inter-agency efficiency

RECOMMENDATIONS

1

Strengthen systems to ensure sustained access to skills

2

Strengthen duty of care

3

Strengthen context specific preparedness

4

Develop a consolidated framework for emergency response

5

Pursue more equitable approaches to partnerships

6

Intensify investment in capacity strengthening

7

Strengthen the practical application of a principled approach

8

Strengthen inter-agency cooperation

9

Strengthen emergency monitoring

10

Strengthen learning and knowledge management