



World Food Programme

Issue No. 29
March 2020

Iraq Market Monitor Report

Highlights

- COVID-19 began to disrupt the market supply chain in Iraq. Price hikes are expected in April.
- 17 of 18 governorates reported price increases in food items, 9 in hygiene items while 3 reported increases in fuel prices. Significant increases in prices were observed during the last two weeks of March.
- The highest impact was recorded in Diyala, where 18 commodity prices surged, including food (12), hygiene (four) and fuel (2) items. Duhok and Wassit governorates also experienced month-to-month price increases for 17 commodities, and in Ninewa, 14 commodities.
- Sugar prices witnessed a 100% increase in Erbil. Potato prices increased in Ninewa by 88% and in Wassit by 50%. Egg prices increased in Salah al-Din by 48%.
- Over February-March, the unskilled wage rate declined in Diyala (13%) and Wassit (5%).

After first being identified in China in December 2019, the highly infectious novel coronavirus COVID-19 affected over a million people in 180 countries in just three months. On March 11, WHO declared a pandemic.

While nations are working to find a cure and vaccine, social distancing and the closure of anthropogenic activities are prescribed as mitigation measures. The world is at a standstill to stop the spread of the disease. The Iraqi government closed or restricted multiple borders on 25 February, after diagnosing its first COVID-19 case. On 22 March, authorities restricted movement between governorates. Curfews and lockdowns are implemented in different parts of the country for all commerce, except food shops and pharmacies.

Due to reduced human activities, the market supply chain is disrupted, and livelihoods have been negatively impacted. A health emergency is turning into an economic emergency.

The World Bank had predicted an annual GDP growth of 5.1% in Iraq in 2020, with a declining trend in the following years. COVID-19 will leave a lasting impact on the already fragile economy, and the country may be unable to achieve its growth targets.

The movement of goods has decreased by at least 30%, said Iraq's Transport Minister Abdullah Laibi. Crucial imports of goods from neighbouring countries Turkey and Iran are down by two-thirds. This is confirmed through analysis of monthly composites of nitrogen dioxide (NO₂) concentration from above, via the Sentinel5P satellite which indicated a significant decrease in air pollution over Iraq between January to March (below). NO₂ is an important trace gas in the environment, generally resulting from anthropogenic activities such as fuel combustion in vehicles and industrial activities. It is a proxy for reduced human and economic activities, that in turn impact upon vulnerable groups.

Vulnerability Analysis & Mapping (VAM) and Monitoring & Evaluation (M&E) Unit

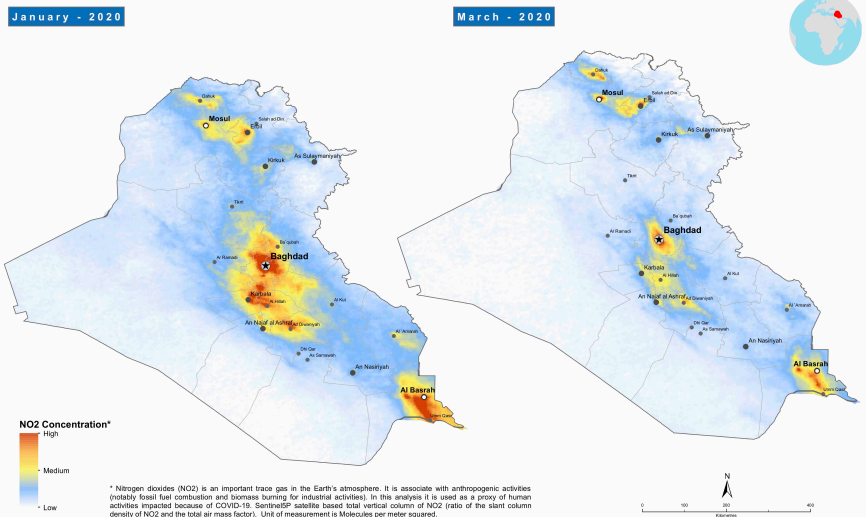
Fawad Raza, Head of VAM and M&E
fawad.raza@wfp.org

Saman Ahmed, VAM Officer
saman.ahmed@wfp.org

Deputy Representative
Marianne Ward

Representative
Abdirahman Meygag

IRAQ: COVID-19 - Concentration of Nitrogen di Oxide (NO₂): Jan Vs Mar 2020



* Nitrogen dioxide (NO₂) is an important trace gas in the Earth's atmosphere. It is associated with anthropogenic activities (notably fossil fuel combustion and biomass burning for industrial activities). In this analysis it is used as a proxy of human activities impacted because of COVID-19. Sentinel5P satellite based total vertical column of NO₂ (ratio of the slant column density of NO₂ and the total air mass factor). Unit of measurement is Molecules per meter squared.

Price Trends

WFP is continuing to monitor the prices of 23 food, 6 hygiene and 3 fuel commodities, along with unskilled wage rates in 18 governorates of Iraq on a weekly basis.

Transparent dissemination of information helps strengthen government policies and avert public panic. This bulletin focuses on the price variations in Iraq during past eight weeks (February-March) to understand the behaviour of market functioning, specifically related to COVID-19.

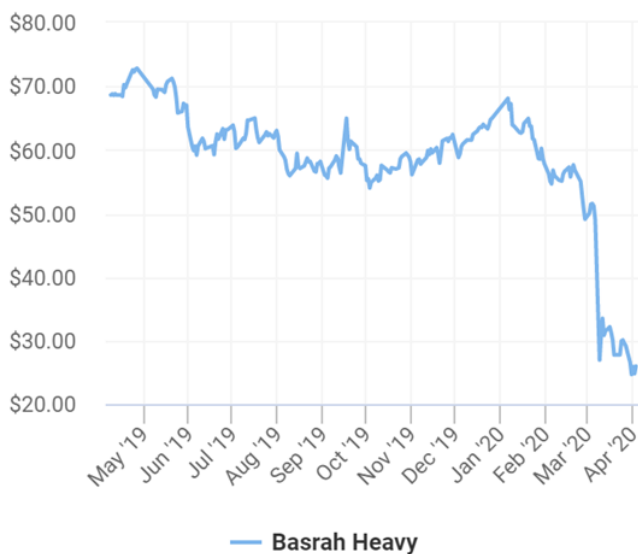
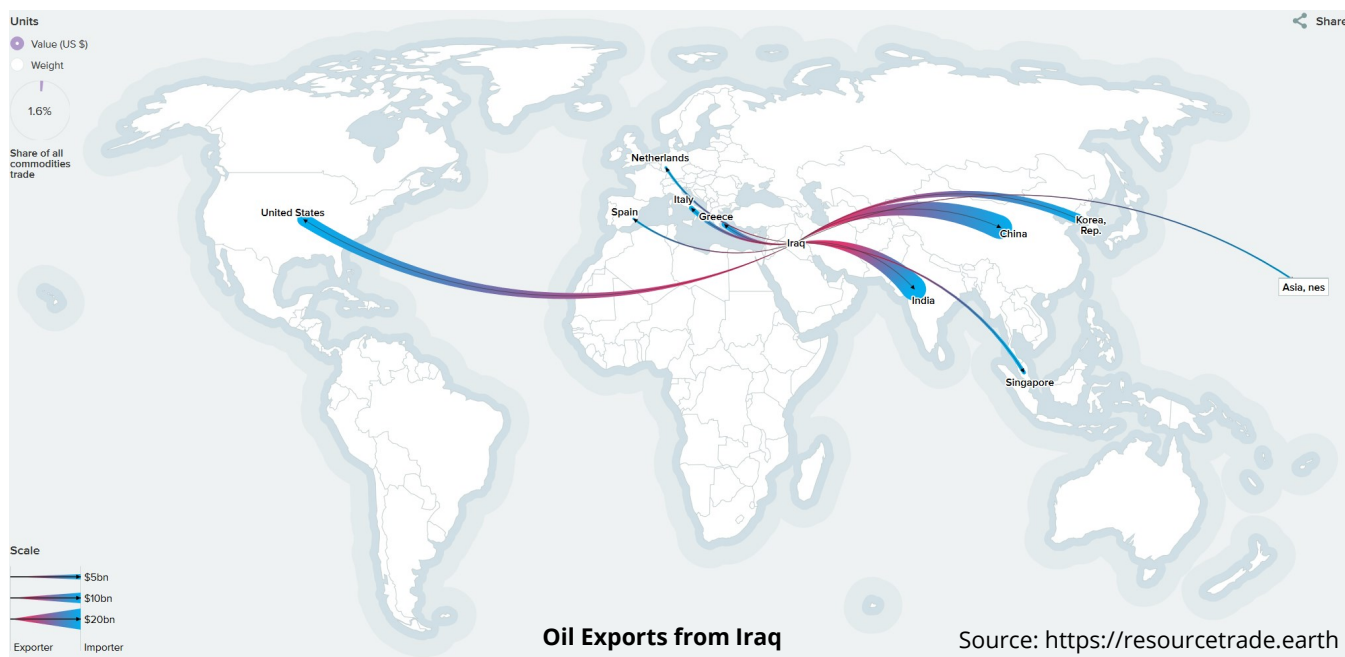
During the review period, national level prices were comparatively stable, however, some parts were more fragile than others and demonstrated higher price variations, particularly during March.

Markets are generally stable and well-integrated in Iraq. No significant volatility was observed during February, however price increases started trending towards the last two weeks of March.

Except Basra, all governorates reported price increases in food items from February to March.

Nine governorates reported price increases in hygiene items, while four governorates reported increases in fuel prices as well.

A significant increase in prices was observed during the last two weeks of March. If the lockdown continues, further price hikes are expected in April.



Iraq continues to be an oil export-dependent economy, where oil exports contribute more than 90% of the total revenue. Global mitigation measures against COVID-19 such as social distancing, travel bans, and the reduction of industrial activities have affected the global demand for oil and oil-based products.

This was coupled with the energy price competition between Saudi Arabia and Russia. The January 2020 price of Iraqi “Basra Heavy” crude oil fell on 31 March from USD 68 per barrel to USD 24, touching an 18 year low. Also looming is a major global recession, which may lead to a decline in global oil demand. If this continues, it could lead to an economic crisis for Iraq.

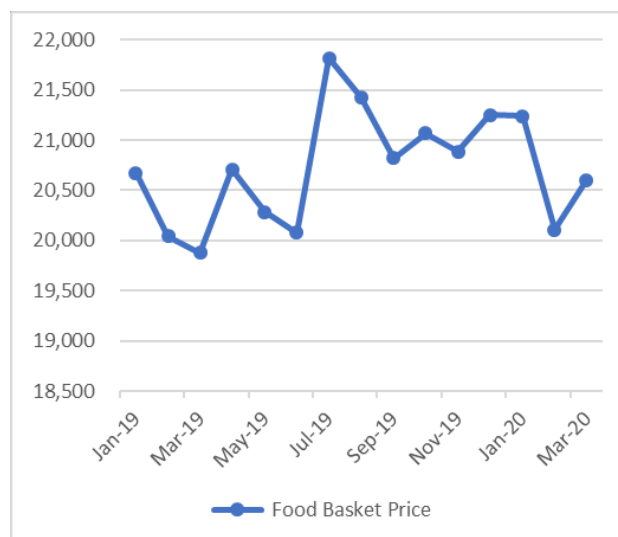
On the other hand, China and India are the biggest importers of Iraqi oil. The restoration of industrial activities in China may be good news for the Iraqi economy.

Food Price Trends

In comparison to February's prices, the cost of the food basket (national average) in March increased by around 2% (i.e. from IQD 20,106 to IQD 20,251 per person per month).

However, some governorates are observing higher prices of certain commodities, that make the overall food basket more expensive.

In Diyala and Misan, the cost of the food basket during the fourth week of March was 17% higher than the standard value. Kirkuk (11%), Duhok (9%), Wassit (6%) and Ninewa (2%) also observed higher prices of the food basket during the fourth week of March.



The main drivers of the food basket price - rice and wheat flour - followed different price patterns in different governorates. From February to March, the price of wheat flour increased significantly in Diyala (25%), Sulaymaniyah (22%), Wassit (20%) and Ninewa (19%). Meanwhile, the price of rice also increased in Diyala (25%) and Wassit (13%) during the same period.

In Erbil, in the first two weeks of March, the food basket price increased by 18%. Kirkuk followed a similar trend the week after, where the prices of the food basket witnessed a dramatic change of 43% (week 2: IQD 17,592, increased to week 3: IQD 25,140). The prices of rice and sugar were the main contributing factors of the food basket price increase in both governorates. The rice prices increased by 50% in both governorates, while sugar prices witnessed a 100% increase in Erbil and 33% in Kirkuk. Sugar prices also surged in Diyala (33%), Thi-Qar (25%), Muthanna (17%) and Duhok (4%) when comparing with earlier February prices.

Over the past eight weeks, food commodities demonstrated mixed trends across different governorates. Following the restriction of movements across Iraqi borders, and between federal and regional governments, price hikes were observed, particularly in central governorates. Food prices started fluctuating in March, particularly in fragile and less shock-responsive areas.

On average, vegetable prices (potatoes and tomatoes) increased significantly. The monthly average prices of potatoes increased in 11 governorates, with the highest increase witnessed in Ninewa (88%), Wassit (50%), Anbar (38%), Babylon (35%) and Duhok (33%). The price of potatoes in Ninewa was IQD 500 per kg in first week of February and reached at IQD 1500 per kg by the fourth week of March, resulting in a 200% increase over this brief period.

Food Basket for Cash Based Transfer (CBT) - 2100KCal			
RATION CONTENTS	Daily Ration (g/person/day)	Energy Value (kcal)	Monthly Ration (kg/l)
WHEAT FLOUR, WHITE	200	728	6
RICE, WHITE, LONG GRAIN, PARBOILED	150	561	4.5
OIL, GROUNDNUT (PEANUT)	30	265.2	0.9
LENTILS	40	137.2	1.2
SALT, IODISED	5	0	0.15
SUGAR	33	127.71	0.99
PASTA, MACARONI	50	185.5	1.5
CHICKEN, MEAT AND SKIN, RAW	30	64.5	0.9
LEAVES, MEDIUM GREEN, e.g. PUMPKIN	20	3.8	0.6
MILK, COW, WHOLE, NOT FORTIFIED	8	4.88	0.24
Ration totals:	566	2,078	16.98

Calculated using NutVal4.1

Tomato prices increased in six governorates, including Duhok (35%), Wassit (33%), Misan (25%), Ninewa (20%), Diyala (15%) and Babylon (7%). Over the last two weeks of March, the increase in tomato prices was dramatic in Ninewa (200%) and Wassit (100%) while Babylon, Muthana, Najaf, Baghdad and Qadissiya experienced a significant 50% price increase.

Eggs in Iraq are primarily imported from Turkey and Iran. The average monthly price of eggs increased by 7% at the national level; this included increases of: 72% in Kirkuk, 48% in Salah al-Din, 25% in Ninewa, while the increase in Duhok, Kerbala and Sulaymaniyah was 13%.

A slight increase was also observed in Diyala (6%) and Wassit (3%).

Price Trend of Hygiene Items

Along with food items, WFP is also monitoring six essential hygiene items, namely: hand soap, shampoo, sanitary napkins, toothbrushes, toothpaste, and disinfectant solution.

The price of soap increased in Wassit (38%), Muthanna (17%), Salah al-Din (17%) and Duhok (8%).

The highest week-to-week price increase was observed in Ninewa governorate during the second week of March, where the price of toothpaste increased by 100%.

The price of sanitary napkins increased in Thi-Qar (33%), Wassit (20%), Duhok (14%), Sulaymaniyah (13%) and Diyala (8%).

Fuel Price Trend

Fuel prices increased in three governorates. In Diyala, the benzine price increased by 122% in the last two weeks of March (from IQD 450 to IQD 1,000). The kerosene oil price increased by 5% in the same governorate.

The kerosene price also increased in Najaf from IQD 150 to IQD 180 during the last two weeks of March. Duhok observed a minor increase in benzine prices.

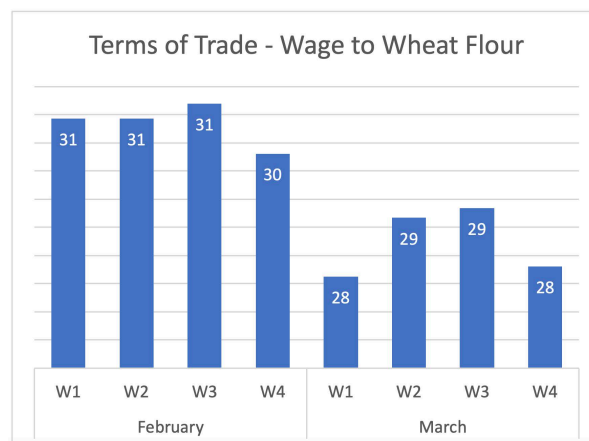
Unskilled Labor and Terms of Trade

Terms of Trade (ToT) is a direct measure of food access. It measures how much of a given commodity (wheat flour in this case) a person's unskilled wage can buy.

Temporal trends of ToT can provide a good proxy for deterioration in the purchasing power of vulnerable people.

Along with the prices of essential commodities, WFP is also monitoring the unskilled wage rates in Iraq. COVID-19 mitigation measures such as curfews and lockdowns are negatively impacting the employability of daily casual laborers as well as low income workers.

The data for the past eight weeks shows that the prices of essential commodities are trending upward, while wage rates are either the same or going down. This is impacting upon the purchasing power of vulnerable people and resulting in deterioration to the overall food security of the country.



On average, the unskilled labor rate in Iraq is around IQD 22,000 per day. This value varies across different governorates, with the lowest monthly average wage reported in Ninewa (IQD 15,000). Diyala reported a 25% reduction in wage rates during the fourth week of March when comparing with the wage rate one month earlier (i.e from IQD 15,000 to IQD 20,000 per day).

Diyala is also the governorate where prices surged the most during past eight weeks. The cost of a food basket of 2100 kCal is IQD 25,695 per person per month reported for this period: the highest among all governorates.

This is ultimately compounding the vulnerabilities and increasing the number of food insecure people in Diyala governorate.

Methodology

Market price information is collected for 33 different items, on a weekly basis from all governorates in Iraq.

This includes 23 food commodities, 3 types of fuel, 6 hygiene items and the wage rate of unskilled daily laborers. WFP's field monitor team collects this data from 8 governorates with a WFP presence on the ground, while the other 10 governorates are covered with the help of a third party.

All data is collected through face-to-face interviews with retailers, using a standardized smartphone application connected to a WFP server.

With the restriction of movement to mitigate COVID-19, price data is now being collected through phone calls to retailers. WFP's Vulnerability Analysis team ensures the quality of data on a weekly basis, analyzing and producing monthly reports. The data is also accessible through WFP's regional as well as global data platforms:

<https://snap.vam.wfp.org>

<https://dataviz.vam.wfp.org>

Annex 1: Market Prices by Governorate and Commodity

	Commodities	W4 Price	% Change from Previous period					Commodities	W4 Price	% Change from Previous period					Commodities	W4 Price	% Change from Previous period			
			1W	4W	1M	1Y				1W	4W	1M	1Y				1W	4W	1M	1Y
Anbar	Bread (Khoboz)	200	0%	0%	0%	33%	Bread (Khoboz)	200	0%	0%	0%	14%	Bread (Khoboz)	200	0%	0%	0%	33%		
	Cheese	4,000	0%	0%	0%		Cheese	4,000	0%	0%	0%		Cheese	6,000	0%	0%	4%			
	Cooking Gas	7,500	0%	0%	0%		Cooking Gas	6,000	-25%	-25%	-13%		Cooking Gas	8,000	0%	0%	0%			
	Dates	1,000	0%	0%	0%	14%	Dates	1,000	0%	0%	0%	0%	-3%	Dates	1,500	0%	0%	0%	71%	
	Eggs	170	0%	0%	0%	13%	Eggs	183	0%	0%	0%	0%	10%	Eggs	180	0%	6%	6%	20%	
	Food Basket	18,450	0%	1%	1%		Food Basket	18,450	0%	0%	0%		Food Basket	25,695	0%	21%	19%			
	Fresh Fish	4,500	0%	0%	0%		Fresh Fish	4,500	0%	0%	3%		Fresh Fish	5,000	0%	11%	8%			
	Fresh Milk	1,500	0%	0%	0%		Fresh Milk	1,500	0%	0%	0%		Fresh Milk	2,000	0%	0%	0%			
	Iodized Salt	500	0%	0%	0%		Iodized Salt	500	0%	0%	0%		Iodized Salt	500	0%	0%	0%			
	Lentils	1,250	0%	0%	0%	-17%	Lentils	1,250	0%	0%	0%	-38%	Lentils	1,500	0%	0%	0%	0%		
	Meat (Beef)	12,000	0%	-4%	-1%	33%	Meat (Beef)	14,000	0%	4%	7%	0%	Meat (Beef)	13,000	0%	0%	0%	44%		
	Meat (Chicken)	3,500	0%	0%	0%	39%	Meat (Chicken)	3,500	0%	0%	0%	-13%	Meat (Chicken)	4,000	0%	14%	14%	105%		
	Oil (Vegetable)	1,250	0%	0%	0%	-29%	Oil (Vegetable)	1,250	0%	0%	0%	0%	-38%	Oil (Vegetable)	1,500	0%	0%	4%	-7%	
	Potatoes	750	0%	50%	38%	-8%	Potatoes	750	0%	0%	0%	-25%	Potatoes	1,000	0%	0%	13%	55%		
	Powder Milk	5,000	0%	0%	0%		Powder Milk	4,000	0%	0%	-6%		Powder Milk	7,500	0%	0%	2%			
	Rice	1,000	0%	0%	0%	-50%	Rice	1,000	0%	0%	0%	0%	0%	Rice	2,000	0%	33%	25%	-6%	
	Sugar	1,000	0%	0%	0%	0%	Sugar	1,000	0%	0%	0%	-20%	Sugar	1,000	0%	33%	33%	0%		
	Tea	6,000	0%	0%	0%	0%	Tea	6,000	0%	0%	7%	9%	Tea	6,000	0%	0%	0%	0%		
	Tomatoes	750	0%	0%	0%	-25%	Tomatoes	750	50%	0%	-29%	-62%	Tomatoes	750	-25%	-25%	15%	0%		
	Wheat Flour	1,000	0%	0%	0%	142%	Wheat Flour	1,000	0%	0%	0%	0%	Wheat Flour	1,250	0%	0%	25%	25%	213%	
White Beans	2,000	0%	0%	0%		White Beans	2,000	0%	0%	0%	0%	White Beans	2,500	0%	25%	22%				
Sanitary napkins	1,500	0%	0%	0%		Sanitary napkins	1,750	0%	0%	0%		Sanitary napkins	2,500	0%	11%	8%				
Shampoo	2,500	0%	0%	0%		Shampoo	2,000	0%	0%	0%		Shampoo	1,500	0%	50%	31%				
Soap, toilet	250	0%	0%	0%		Soap, toilet	1,500	0%	-25%	-13%		Soap, toilet	2,000	0%	0%	0%				
Toothbrush	2,000	0%	0%	0%		Toothbrush	2,500	0%	0%	0%		Toothbrush	2,500	0%	25%	13%				
Toothpaste	2,000	0%	0%	0%		Toothpaste	2,000	0%	0%	0%		Toothpaste	1,250	0%	25%	19%				
Benzine	450	0%	0%	0%		Benzine	450	0%	0%	0%		Benzine	1,000	122%	122%	33%				
Kerosene	500	0%	0%	0%		Kerosene	500	0%	0%	0%		Kerosene	750	50%	50%	25%				
Unskilled Labor	25,000	0%	0%	0%		Unskilled Labor	25,000	0%	0%	0%		Unskilled Labor	15,000	-25%	-25%	-13%				
Wage to FB	1	0%	0%	0%		Wage to FB	1	0%	0%	0%		Wage to FB	1	-25%	-40%	-27%				
Terms of Trade	25	0%	0%	0%		Terms of Trade	25	0%	0%	0%		Terms of Trade	12	-25%	-40%	-30%				
Baghdad	Bread (Khoboz)	166	0%	0%	0%	33%	Bread (Khoboz)	175	0%	0%	0%	5%	Bread (Khoboz)	250	0%	0%	0%			
	Cheese	6,000	0%	0%	0%		Cheese	6,000	0%	0%	0%		Cheese	7,500	0%	25%	18%			
	Cooking Gas	6,000	0%	0%	0%		Cooking Gas	7,000	0%	0%	0%		Cooking Gas	8,000	0%	0%	0%			
	Dates	1,000	0%	0%	0%	-60%	Dates	3,000	0%	0%	0%	50%	Dates	3,500	0%	0%	8%			
	Eggs	166	0%	-5%	-6%	25%	Eggs	200	0%	0%	0%	20%	Eggs	205	2%	23%	13%			
	Food Basket	15,879	1%	3%	0%		Food Basket	20,513	0%	0%	0%		Food Basket	23,994	0%	1%	1%			
	Fresh Fish	5,000	0%	-9%	4%		Fresh Fish	5,000	0%	0%	0%		Fresh Fish	6,000	9%	20%	8%			
	Fresh Milk	1,000	0%	0%	-11%		Fresh Milk	1,500	0%	0%	0%		Fresh Milk	1,500	0%	20%	14%			
	Iodized Salt	1,500	0%	0%	0%		Iodized Salt	1,000	0%	0%	0%		Iodized Salt	500	0%	0%	0%			
	Lentils	1,000	0%	0%	0%	-50%	Lentils	2,000	0%	0%	0%	33%	Lentils	1,850	0%	0%	3%			
	Meat (Beef)	12,000	0%	0%	0%	0%	Meat (Beef)	12,000	0%	0%	0%	0%	Meat (Beef)	13,000	0%	4%	3%			
	Meat (Chicken)	2,500	0%	11%	-2%	-44%	Meat (Chicken)	3,500	0%	0%	0%	17%	Meat (Chicken)	3,250	0%	0%	0%			
	Oil (Vegetable)	1,250	0%	0%	0%	-17%	Oil (Vegetable)	1,500	0%	0%	0%	0%	Oil (Vegetable)	1,500	0%	0%	-5%			
	Potatoes	1,000	54%	54%	35%	-18%	Potatoes	750	0%	0%	0%	-25%	Potatoes	1,000	0%	33%	33%			
	Powder Milk	6,000	0%	0%	0%		Powder Milk	9,500	0%	0%	0%		Powder Milk	5,750	0%	0%	5%			
	Rice	1,000	0%	0%	0%	-33%	Rice	2,000	0%	0%	0%	14%	Rice	2,000	0%	0%	0%	0%		
	Sugar	1,000	0%	0%	0%	0%	Sugar	1,000	0%	0%	0%	0%	Sugar	1,100	10%	10%	4%			
	Tea	6,000	0%	0%	0%	0%	Tea	10,000	0%	0%	0%	67%	Tea	9,875	13%	22%	15%			
	Tomatoes	750	50%	50%	7%	-49%	Tomatoes	500	0%	-33%	-25%	-44%	Tomatoes	1,500	20%	50%	35%			
	Wheat Flour	750	0%	0%	0%	-25%	Wheat Flour	400	0%	0%	0%	-60%	Wheat Flour	1,000	0%	0%	0%			
White Beans	2,000	0%	0%	0%		White Beans	2,500	0%	0%	0%		White Beans	2,750	0%	10%	13%				
Benzine	450	0%	0%	0%		Sanitary napkins	250	0%	0%	0%		Sanitary napkins	1,300	-4%	4%	14%				
Kerosene	150	0%	0%	0%		Shampoo	6,000	0%	0%	0%		Shampoo	4,000	0%	0%	19%				
Unskilled Labor	20,000	0%	0%	0%		Soap, toilet	2,000	0%	0%	0%		Soap, toilet	3,500	0%	0%	8%				
Wage to FB	1	0%	0%	0%		Toothbrush	4,000	0%	0%	0%		Toothbrush	3,500	0%	0%	0%				
Terms of Trade	27	0%	0%	0%		Toothpaste	4,000	0%	0%	0%		Toothpaste	3,000	0%	0%	-17%				
Sanitary napkins	250	0%	0%	0%		Benzine	460	0%	0%	0%		Benzine	630	0%	2%	2%				
Shampoo	3,000	0%	0%	0%	4%	Kerosene	400	0%	0%	0%		Kerosene	600	0%	0%	-3%				
Soap, toilet	1,600	0%	0%	0%		Unskilled Labor	25,000	0%	0%	0%		Unskilled Labor	25,000	0%	67%	0%				
Toothbrush	3,000	0%	0%	0%		Wage to FB	1	0%	0%	0%		Wage to FB	1	0%	65%	-1%				
Toothpaste	1,500	0%	0%	0%		Terms of Trade	63	0%	0%	0%		Terms of Trade	25	0%	67%	0%				

W4 Price refers to the price during the 4th week of March. **1W** compares the 4th week with the 3rd week of the same month. **4W** compares the 4th week of the current month to the 4th week of previous month. **1M** compares the average price of current month to the average price of the previous month. **1Y** compares the average price of the current month to the same month last year.

Percent price decreases beyond the defined threshold (-5%) are highlighted with a **green dot**, while percent price increases beyond the defined threshold (5%) are highlighted with a **red dot**. Changes within 'normal' values (±5%) are represented with a **yellow dot** and represent price stability.

Annex 1: Market Prices by Governorate and Commodity

Governorate	Commodities	W4 Price	% Change from Previous period				
			1W	4W	1M	1Y	
Erbil	Bread (Khoboz)	200	0%	0%	0%	20%	
	Cheese	4,000	0%	0%	0%		
	Cooking Gas	8,000	0%	0%	0%		
	Dates	2,000	0%	0%	0%	-20%	
	Eggs	183	0%	0%	0%	69%	
	Food Basket	19,965	1%	20%	14%		
	Fresh Fish	4,500	0%	0%	0%		
	Fresh Milk	1,250	0%	0%	0%		
	Iodized Salt	500	0%	0%	0%		
	Lentils	1,250	0%	0%	0%	0%	
	Meat (Beef)	15,000	0%	7%	5%	23%	
	Meat (Chicken)	2,500	0%	25%	16%	-15%	
	Oil (Vegetable)	1,500	0%	0%	0%	25%	
	Potatoes	750	50%	50%	13%	-25%	
	Powder Milk	3,750	0%	0%	0%		
	Rice	1,500	0%	50%	38%	38%	
	Sugar	1,000	0%	100%	75%	46%	
	Kirkuk	Tea	7,000	0%	0%	0%	-15%
Tomatoes		750	50%	50%	13%	-25%	
Wheat Flour		1,000	0%	0%	0%	100%	
White Beans		1,500	0%	0%	0%		
Sanitary napkins		1,500	0%	0%	0%		
Shampoo		2,500	0%	0%	0%		
Soap, toilet		2,000	0%	0%	0%		
Toothbrush		-	#DIV/0!	-	-		
Toothpaste		1,750	0%	0%	0%		
Benzine		600	0%	0%	0%		
Kerosene		500	0%	0%	0%		
Unskilled Labor		10,000	-50%	-50%	-13%		
Wage to FB		0	-95%	-96%	-33%		
Terms of Trade		10	-50%	-50%	-13%		
Muthanna		Bread (Khoboz)	250	0%	0%	0%	39%
		Cheese	5,000	0%	25%	13%	
		Cooking Gas	7,000	0%	0%	0%	
		Dates	1,500	0%	20%	10%	38%
	Eggs	200	0%	72%	36%	5%	
	Food Basket	24,390	-3%	40%	21%		
	Fresh Fish	4,500	0%	29%	14%		
	Fresh Milk	-	-	-			
	Iodized Salt	500	0%	50%	25%		
	Lentils	1,500	0%	50%	25%	25%	
	Meat (Beef)	14,000	0%	40%	23%	1%	
	Meat (Chicken)	4,000	0%	14%	7%	76%	
	Oil (Vegetable)	1,500	0%	20%	10%	10%	
	Potatoes	750	-63%	50%	100%	100%	
	Powder Milk	5,500	0%	10%	5%		
	Rice	1,500	0%	50%	25%	-29%	
	Sugar	1,000	0%	33%	17%	-13%	
	Najaf	Tea	6,000	0%	20%	10%	-15%
Tomatoes		750	-50%	50%	69%	13%	
Wheat Flour		1,500	0%	50%	25%	178%	
White Beans		3,000	0%	50%	25%		
Sanitary napkins		1,250	0%	25%	13%		
Shampoo		1,500	0%	50%	25%		
Soap, toilet		250	0%	50%	25%		
Toothbrush		500	0%	100%	50%		
Toothpaste		1,500	20%	50%	19%		
Benzine		450	0%	0%	0%		
Kerosene		150	0%	0%	0%		
Unskilled Labor		-	-	-			
Wage to FB		-	-	-			
Terms of Trade		-	-	-			
Karbala		Bread (Khoboz)	166	0%	0%	0%	33%
		Cheese	6,000	0%	0%	0%	
		Cooking Gas	6,000	0%	0%	0%	
		Dates	2,500	25%	25%	13%	
	Eggs	183	10%	10%	13%	16%	
	Food Basket	21,707	3%	3%	1%		
	Fresh Fish	4,500	0%	13%	13%		
	Fresh Milk	2,000	0%	0%	0%		
	Iodized Salt	750	0%	0%	0%		
	Lentils	1,750	17%	17%	8%	-10%	
	Meat (Beef)	12,000	0%	0%	2%	-13%	
	Meat (Chicken)	3,250	8%	8%	2%	-16%	
	Oil (Vegetable)	1,500	0%	0%	0%	-14%	
	Potatoes	1,000	33%	33%	17%	0%	
	Powder Milk	4,500	0%	0%	0%		
	Rice	2,000	0%	0%	0%	14%	
	Sugar	1,000	0%	0%	0%	-20%	
	Missan	Tea	5,000	0%	0%	0%	-20%
Tomatoes		750	0%	0%	-8%	-43%	
Wheat Flour		650	0%	0%	0%	-35%	
White Beans		2,500	25%	11%	3%		
Sanitary napkins		250	0%	0%	0%		
Shampoo		4,400	-2%	-2%	-1%		
Soap, toilet		3,500	0%	0%	0%		
Toothbrush		2,000	0%	0%	0%		
Toothpaste		2,500	0%	0%	0%		
Benzine		450	0%	0%	0%		
Kerosene		375	0%	0%	0%		
Unskilled Labor		25,000	0%	0%	0%		
Wage to FB		1	-2%	-2%	-1%		
Terms of Trade		38	0%	0%	0%		

W4 Price refers to the price during the 4th week of March. 1W compares the 4th week with the 3rd week of the same month. 4W compares the 4th week of the current month to the 4th week of previous month. 1M compares the average price of current month to the average price of the previous month. 1Y compares the average price of the current month to the same month last year.

Percent price decreases beyond the defined threshold (-5%) are highlighted with a **green dot**, while percent price increases beyond the defined threshold (5%) are highlighted with a **red dot**. Changes within 'normal' values (±5%) are represented with a **yellow dot** and represent price stability.

Annex 1: Market Prices by Governorate and Commodity

	Commodities	W4 Price	% Change from Previous period					Commodities	W4 Price	% Change from Previous period					Commodities	W4 Price	% Change from Previous period			
			1W	4W	1M	1Y				1W	4W	1M	1Y				1W	4W	1M	1Y
Nineewa	Bread (Khoboz)	125	0%	0%	0%	-17%	Bread (Khoboz)	200	0%	0%	0%	33%	Bread (Khoboz)	125	0%	0%	0%	0%		
	Cheese	6,000	0%	0%	9%		Cheese	4,000	0%	0%	0%		Cheese	6,000	0%	-8%	-8%			
	Cooking Gas	8,000	0%	-11%	-9%		Cooking Gas	8,000	0%	0%	0%		Cooking Gas	8,000	0%	0%	0%			
	Dates	1,500	0%	50%	38%	38%	Dates	1,500	0%	-25%	-14%	50%	Dates	3,000	0%	20%	20%	20%		
	Eggs	217	9%	45%	28%	25%	Eggs	166	0%	43%	48%	15%	Eggs	200	0%	0%	0%	50%		
	Food Basket	22,335	9%	17%	8%		Food Basket	20,175	6%	-6%	-9%		Food Basket	21,863	2%	2%	-1%			
	Fresh Fish	3,000	50%	50%	29%		Fresh Fish	5,000	0%	0%	0%		Fresh Fish	5,000	0%	0%	0%			
	Fresh Milk	1,750	40%	75%	38%		Fresh Milk	1,500	0%	0%	0%		Fresh Milk	1,500	0%	0%	0%			
	Iodized Salt	750	0%	0%	0%		Iodized Salt	500	0%	-23%	-23%		Iodized Salt	1,000	0%	0%	0%			
	Lentils	1,500	0%	20%	15%	-4%	Lentils	2,000	0%	0%	0%	33%	Lentils	1,500	0%	0%	0%	-25%		
	Meat (Beef)	11,000	10%	10%	2%	14%	Meat (Beef)	11,000	0%	22%	31%	31%	Meat (Beef)	10,000	0%	0%	0%	-17%		
	Meat (Chicken)	3,500	17%	27%	10%	63%	Meat (Chicken)	3,000	0%	-3%	-3%	52%	Meat (Chicken)	3,250	8%	0%	-4%	-20%		
	Oil (Vegetable)	1,750	17%	17%	4%	-11%	Oil (Vegetable)	1,250	0%	-17%	-17%	-29%	Oil (Vegetable)	1,500	0%	0%	-4%	15%		
	Potatoes	1,500	100%	200%	88%	25%	Potatoes	1,000	0%	33%	14%	33%	Potatoes	1,000	33%	33%	17%	-30%		
	Powder Milk	6,000	0%	0%	0%		Powder Milk	4,000	0%	0%	0%		Powder Milk	8,000	0%	0%	0%			
	Rice	2,000	0%	0%	0%	0%	Rice	1,250	25%	-17%	-25%	-95%	Rice	2,000	0%	0%	-3%	29%		
	Sugar	1,000	0%	0%	0%	0%	Sugar	1,000	0%	0%	0%	0%	Sugar	1,000	0%	33%	25%	-6%		
	Tea	6,000	0%	0%	0%	0%	Tea	5,000	0%	-17%	-17%	-17%	Tea	6,000	0%	0%	0%	20%		
	Tomatoes	1,500	200%	200%	20%	-25%	Tomatoes	750	0%	0%	-7%	-19%	Tomatoes	750	50%	0%	-8%	-50%		
	White Beans	2,500	0%	25%	19%		White Beans	2,000	0%	-20%	-20%		White Beans	2,000	0%	-20%	-20%			
Sanitary napkins	250	0%	0%	0%		Sanitary napkins	2,000	0%	0%	0%		Sanitary napkins	500	0%	0%	33%				
Shampoo	4,000	0%	0%	0%		Shampoo	2,500	0%	0%	0%		Shampoo	6,000	0%	-8%	-4%				
Soap, toilet	2,000	0%	0%	0%		Soap, toilet	2,000	0%	33%	17%		Soap, toilet	2,000	0%	0%	0%				
Toothbrush	3,000	0%	0%	0%		Toothbrush	1,500	0%	0%	0%		Toothbrush	3,000	0%	0%	0%				
Toothpaste	4,000	0%	100%	75%		Toothpaste	1,500	0%	-25%	-25%		Toothpaste	2,000	0%	0%	0%				
Benzine	450	0%	-10%	-10%		Benzine	450	0%	0%	0%		Benzine	450	0%	0%	0%				
Kerosene	600	9%	-20%	-11%		Kerosene	475	0%	0%	0%		Kerosene	275	0%	0%	0%				
Unskilled Labor	15,000	0%	0%	0%		Unskilled Labor	25,000	0%	0%	0%		Unskilled Labor	25,000	0%	0%	0%				
Wage to FB	1	-4%	-9%	-4%		Wage to FB	1	-8%	9%	14%		Wage to FB	1	0%	-1%	1%				
Terms of Trade	21	-14%	-31%	-14%		Terms of Trade	25	0%	0%	0%		Terms of Trade	33	0%	0%	0%				
Qadisiya	Bread (Khoboz)	143	0%	0%	0%	-14%	Bread (Khoboz)	125	0%	0%	0%	0%	Bread (Khoboz)	125	0%	0%	0%	-38%		
	Cheese	6,000	0%	0%	0%		Cheese	5,500	0%	0%	0%		Cheese	4,500	13%	13%	6%			
	Cooking Gas	6,000	0%	0%	0%		Cooking Gas	7,500	0%	0%	0%		Cooking Gas	6,000	0%	0%	0%			
	Dates	3,000	0%	0%	4%	129%	Dates	2,500	0%	-9%	-9%	-35%	Dates	2,000	0%	0%	0%	33%		
	Eggs	183	0%	-1%	0%	10%	Eggs	200	0%	20%	13%	70%	Eggs	183	10%	10%	3%	24%		
	Food Basket	20,262	1%	1%	0%		Food Basket	17,999	0%	2%	6%		Food Basket	23,364	9%	26%	16%			
	Fresh Fish	5,000	11%	11%	12%		Fresh Fish	4,500	0%	0%	0%		Fresh Fish	5,000	25%	25%	9%			
	Fresh Milk	1,500	0%	0%	0%		Fresh Milk	1,250	0%	0%	0%		Fresh Milk	1,000	33%	33%	8%			
	Iodized Salt	750	0%	0%	0%		Iodized Salt	500	0%	0%	0%		Iodized Salt	1,250	0%	0%	0%			
	Lentils	1,000	0%	0%	6%	6%	Lentils	1,000	0%	0%	5%	5%	Lentils	1,750	17%	40%	25%	-4%		
	Meat (Beef)	10,000	0%	0%	0%	-8%	Meat (Beef)	16,000	0%	0%	0%	2%	Meat (Beef)	12,000	9%	9%	5%	-16%		
	Meat (Chicken)	3,000	0%	0%	-2%	-19%	Meat (Chicken)	3,300	0%	0%	0%	-18%	Meat (Chicken)	4,500	38%	38%	13%	0%		
	Oil (Vegetable)	1,250	0%	0%	0%	-17%	Oil (Vegetable)	1,500	0%	0%	0%	0%	Oil (Vegetable)	1,500	0%	20%	21%	-4%		
	Potatoes	1,000	33%	33%	0%	0%	Potatoes	1,000	0%	0%	0%	33%	Potatoes	1,500	100%	140%	50%	-6%		
	Powder Milk	5,000	0%	0%	0%		Powder Milk	5,000	0%	0%	0%		Powder Milk	5,000	25%	25%	13%			
	Rice	2,000	0%	0%	0%	60%	Rice	1,250	0%	0%	1%	3%	Rice	1,750	0%	17%	13%	-4%		
	Sugar	1,000	0%	0%	0%	0%	Sugar	900	0%	0%	0%	-5%	Sugar	1,000	0%	0%	0%	0%		
	Tea	6,000	0%	0%	0%	-13%	Tea	7,500	0%	0%	3%	7%	Tea	5,500	10%	22%	11%	-17%		
	Tomatoes	750	50%	0%	-17%	-33%	Tomatoes	1,000	0%	0%	0%	-11%	Tomatoes	1,500	100%	100%	33%	14%		
	White Beans	660	0%	0%	0%	-12%	White Beans	800	0%	7%	22%	28%	White Beans	914	0%	27%	20%	23%		
Sanitary napkins	2,250	13%	13%	0%		Sanitary napkins	2,000	0%	0%	0%		Sanitary napkins	2,500	25%	43%	29%				
Shampoo	5,000	0%	0%	0%		Shampoo	1,750	0%	17%	13%		Shampoo	300	0%	20%	20%				
Soap, toilet	5,000	0%	0%	0%		Shampoo	2,500	0%	0%	0%		Shampoo	4,000	0%	0%	0%				
Soap, toilet	2,000	0%	0%	0%		Soap, toilet	2,250	0%	0%	0%		Soap, toilet	3,000	0%	50%	38%				
Toothbrush	2,000	0%	0%	0%		Toothbrush	1,500	0%	0%	0%		Toothbrush	2,000	0%	0%	0%				
Toothpaste	2,500	0%	0%	0%		Toothpaste	1,250	0%	0%	0%		Toothpaste	3,000	0%	0%	0%				
Benzine	450	0%	0%	0%		Benzine	680	0%	0%	0%		Benzine	450	0%	0%	0%				
Kerosene	650	294%	294%	0%		Kerosene	630	0%	0%	0%		Kerosene	300	0%	0%	0%				
Unskilled Labor	25,000	0%	0%	0%		Unskilled Labor	18,000	0%	0%	0%		Unskilled Labor	15,000	0%	0%	-5%				
Wage to FB	1	0%	0%	-1%		Wage to FB	1	0%	-2%	-6%		Wage to FB	1	-2%	-18%	-17%				
Terms of Trade	38	0%	0%	0%		Terms of Trade	23	0%	-6%	-15%		Terms of Trade	16	0%	-21%	-20%				

