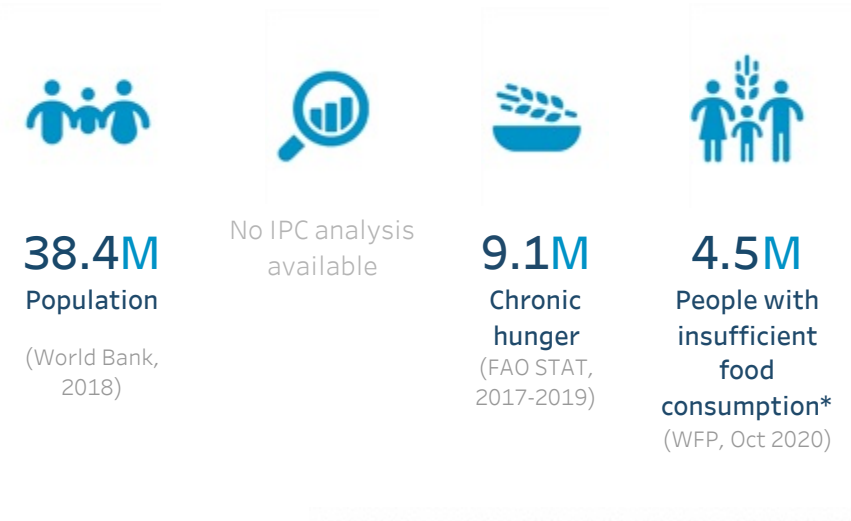
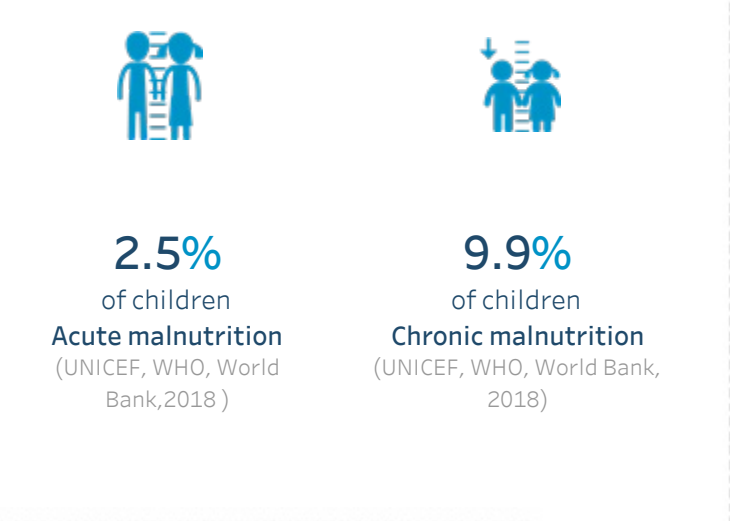




OVERVIEW



NUTRITION



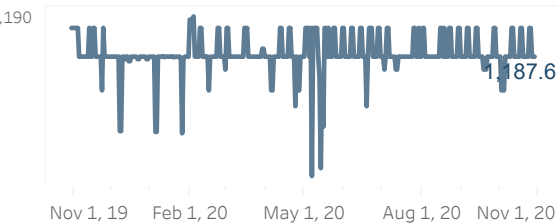
MACRO-ECONOMIC



Import dependency
35.0% of cereals (October 2020)

Data source: WFP's calculation based on USDA data

Currency exchange ■ USD/IQD



TREND AND FOOD CONSUMPTION PATTERNS (Oct 2020)

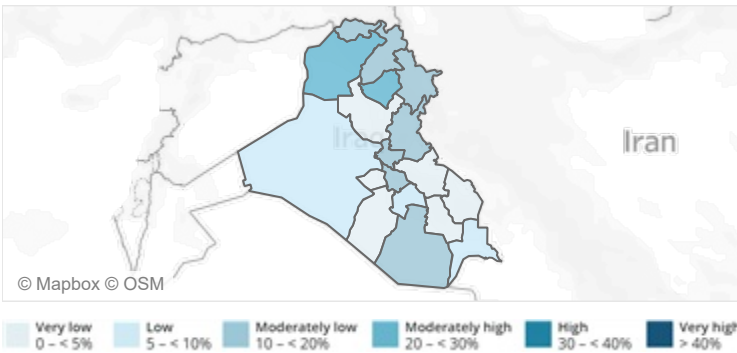
Number of people with insufficient food consumption* (Daily updates)



Data source: WFP (actual data)

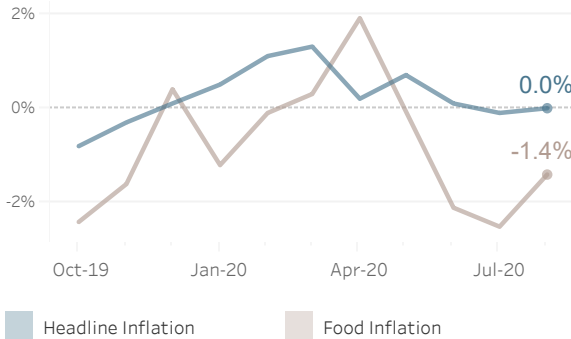
* People with insufficient food consumption refer to those with poor or borderline food consumption, according to the Food Consumption Score (FCS).

Prevalence of insufficient food consumption*



Data source: Trading Economics

Headline and food inflation



Data source: Trading economics

NOTES

WFP's Hunger Monitoring Unit conducts continuous food security monitoring via live telephone interviews. Data is collected on a rolling basis and processed daily. Daily updates represent a snapshot of the current food security situation over the past 28/30 calendar days, with a slight time lag of 2-4 days to ensure data quality. More information can be found in the Methodology and Glossary sections on Hunger Map LIVE (hungermap.wfp.org).

To trigger a food consumption (FC) alert, marked deteriorations should meet the threshold of deterioration in FC (from one month to the next) relevant to the existing percentage of the population that already has insufficient food consumption (IFC):
<20% with IFC requires a 25% deterioration in FC
20-30% with IFC, requires a 15% deterioration in FC
>30% with IFC, requires a 10% deterioration in FC

CONTACTS

Abdirahman Meygag
Representative and Country Director
Iraq Country Office
abdirahman.meygag@wfp.org

Fawad Raza
Head of VAM and M&E
Iraq Country Office
fawad.raza@wfp.org



vam
food security analysis

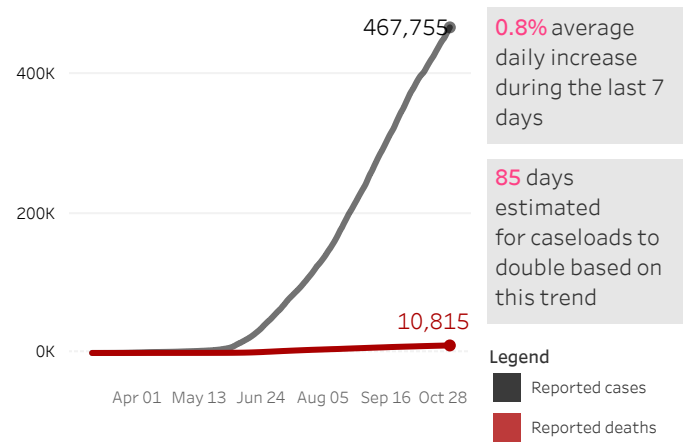
HungerMap LIVE: Hunger and COVID-19 Weekly Snapshot

Iraq | October 30, 2020

COVID-19 CASES

(Source: © Johns Hopkins University)

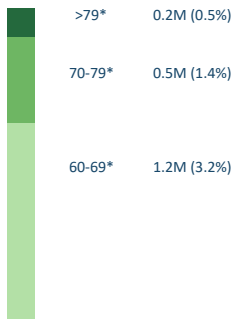
Confirmed COVID-19 cases as of 28 October, 2020



DEMOGRAPHICS

Breakdown of age groups in Iraq (60 and above)

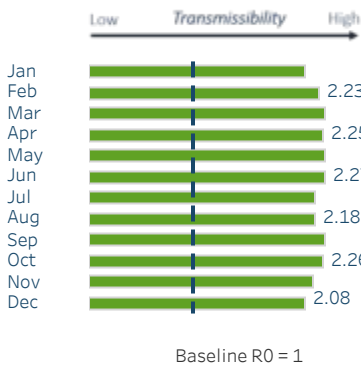
(Source: UNDESA)



*Age groups with higher mortality if infected by COVID-19; people with pre-existing conditions could also have higher mortality regardless of age.

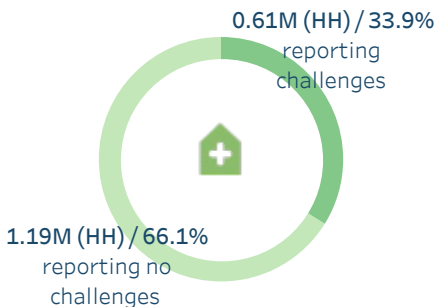
VIRUS TRANSMISSIBILITY

An estimation of possible climate related seasonal changes in SARS-Cov-2 reproductive number (R0), a measure of infectiousness, based on air temperature and relative humidity (Source: COVID-19 and climate: Possible geographical and temporal patterns)

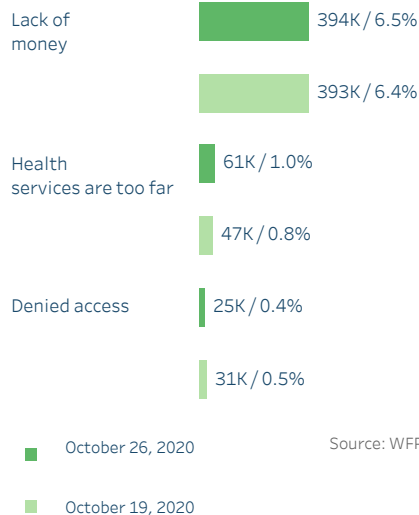


HEALTH ACCESS

The number of households (HH) reporting challenges accessing health services has increased by 20K compared to last week

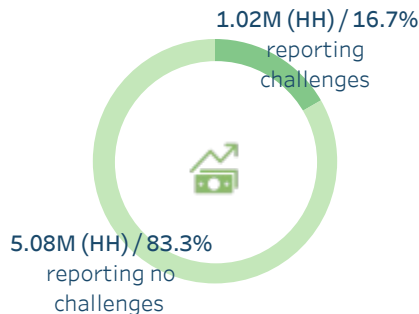


Top barriers to accessing health services

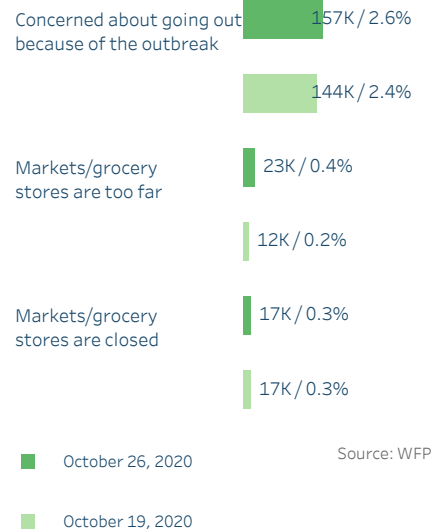


MARKET ACCESS

The number of households (HH) reporting challenges accessing markets/grocery stores has increased by 2K compared to last week

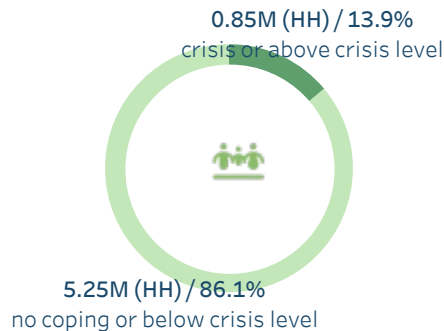


Top barriers to accessing markets/grocery stores

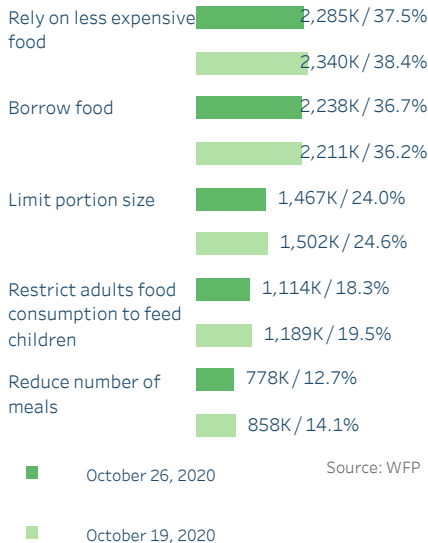


FOOD BASED COPING

The number of households (HH) using crisis or above crisis-level food-based coping has decreased by 63K compared to last week



Food based coping strategies



NOTES

WFP's Hunger Monitoring Unit (previously known as mVAM) conducts continuous food security monitoring via phone interviews. Data is collected on a rolling basis and processed daily. Daily updates represent a snapshot of the current situation over the past 28/30 calendar days. Note that there is a slight time lag of 2-4 days to ensure data quality. In light of the recent Coronavirus Disease (COVID-19) outbreak, these systems have been expanded to monitor COVID-19 impacts on households, specifically the access to health services, markets and livelihood changes/impacts. This will help WFP and other agencies monitor the situation, capture problems in real time and provide the necessary information for early action and mitigation.

CONTACTS

Abdirahman Meygag
Representative and Country Director
Iraq Country Office
abdirahman.meygag@wfp.org

Fawad Raza
Head of VAM and M&E
Iraq Country Office
fawad.raza@wfp.org

