



@WFP/Jessica Lawson

### Highlights

- o In October 2020, the national average price of a standard reference food basket increased by five percent compared to September 2020, reaching SYP 88,138 (USD 71 at the official exchange rate 1,250/USD). This is the highest price recorded since WFP started monitoring prices in 2013.
- o On 29 October, the official price of wheat flour increased from SYP 30,000/MT to SYP 40,000/MT. Moreover, the price of subsidized bread increased from SYP 50/bundle to SYP 75/bundle for bread without a nylon bag and to SYP 100/bundle for bread with a nylon bag. The bread bundle size also decreased from 1.3 kg to 1.1 kg.
- o The price of subsidized diesel remained at SYP 180/litre for heating and transportation, and at SYP 135/litre for bakeries. On the other hand, the price of subsidized diesel for industrial and commercial use increased from SYP 296/litre to SYP 650/litre.
- o The SYP/USD informal exchange rate weakened by 6 percent in October compared to September 2020.
- o For further information, please contact:

Jan Michiels at  
Jan.Michiels@wfp.org

Pakinam Moussa at  
Pakinam.Moussa@wfp.org

### Standard Food Basket

The national average price of a standard reference food basket<sup>1</sup> increased by five percent in October 2020 compared to September 2020 reaching SYP 88,138. The national average food basket price was 73 percent higher than that of April 2020 (six months ago) and was 247 percent higher compared to October 2019 (Figure 1). This is the highest recorded price since WFP started monitoring prices in 2013.

Month-on-month (m-o-m), all 14 governorates except Idleb reported an increasing average reference food basket price in October 2020 compared to September. The highest m-o-m increase of 13 percent was reported in Tartous, while the lowest increase of three percent was reported in Hama.

Despite the m-o-m decrease, Idleb continued to report the highest reference food basket cost at SYP 106,680 (down two percent m-o-m), followed by Tartous at SYP 94,223 (up 13 percent m-o-m). Conversely, Deir-ez-Zor continued to report the lowest reference food basket cost at SYP 78,263 (up four percent m-o-m), followed by Ar-Raqqa at SYP 82,544 (up four percent m-o-m).

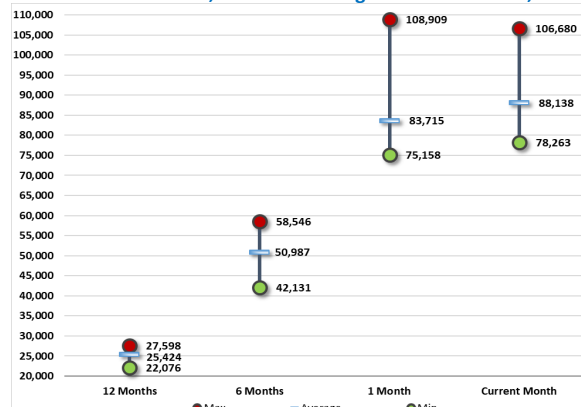
The price of the reference food basket has significantly increased across all 14 governorates compared to levels 12 months ago. Similarly, Idleb continued to record the highest increase (up 291 percent), followed by Quneitra (up 288 percent).

The gap between the highest and lowest average food basket prices reduced by 16 percent from SYP 33,752 in September 2020 to SYP 28,418 in October 2020 (Chart 1). However, week-on-week (w-o-w), the gap between the highest and lowest average food basket prices increased by 13 percent between the first and fourth weeks of October. Moreover, the gap is 73 percent larger than in April 2020 and 415 percent larger than October 2019, highlighting continued supply chain disruptions across the country.

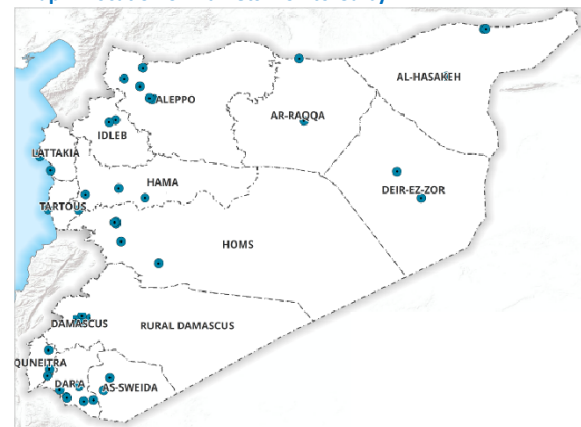
Figure 1: Food basket cost and changes, SYP

Governorate	Price October 2020	1 month change	6 months changes	12 months changes
Aleppo	SYP 88,825	9%	90%	277%
Damascus	SYP 84,048	7%	63%	253%
Dar'a	SYP 88,602	4%	75%	243%
Deir-ez-Zor	SYP 78,263	4%	86%	199%
Hama	SYP 84,541	3%	44%	243%
Al-Hasakeh	SYP 84,515	6%	75%	206%
Homs	SYP 84,845	4%	45%	284%
Idleb	SYP 106,680	-2%	96%	291%
Lattakia	SYP 90,723	6%	74%	241%
Ar-Raqqa	SYP 82,544	4%	68%	211%
Rural Damascus	SYP 85,838	6%	69%	241%
As-Sweida	SYP 88,719	7%	65%	233%
Tartous	SYP 94,223	13%	84%	241%
Quneitra	SYP 91,562	6%	102%	288%
Average	SYP 88,138	5%	73%	247%

Chart 1: National min., max. and average food basket cost, SYP



Map 1: Location of markets monitored by WFP



1. The standard food basket is a group of essential food commodities. In Syria, the food basket is set at a group of dry goods providing 2,030 kcal a day for a family of five during a month. The basket includes 37 kg bread, 19 kg rice, 19 kg lentils, 5 kg of sugar, and 7 litres of vegetable oil

## Fuel and bread subsidy adjustments

### Fuel

Between September and October 2020, the government of Syria introduced changes to the fuel and bread subsidy. On 12 September 2020, the petrol allocation for vehicles was reduced from 40 liters to 30 liters per vehicle every four to seven days depending on whether the vehicle is for private or commercial use (i.e. taxis), while keeping the 100 liters entitlement per vehicle per month in place. The allocation for the unsubsidized petrol decreased from 400 liters to 100 liters per month per vehicle. The decrease in petrol allocation is attributed to a number of reasons: mainly the limited supply of international hard currency needed to purchase fuel from international markets, the depreciation of the Syrian pound and Syria's Baniyas oil refinery being under maintenance. Moreover, the western multi-lateral coercive measures on Iran have made fuel exports to Syria more challenging.

In October 2020, the subsidized price of diesel for heating and other sectors (e.g. agriculture and the public sector) remained unchanged at SYP 180/litre and the subsidized diesel used for bakeries remained at SYP 135/litre, as well. There was also no change to the price of diesel for public bakeries, currently at SYP 135/litre. However, the actual price at which people buy the subsidized diesel from petrol stations increased due to the added service fees which now range between SYP 185-200/litre. Moreover, the price of subsidized petrol (Octane 90), increased from SYP 250/litre to SYP 450/litre. On the other hand, unsubsidized diesel price used for commercial and industrial purposes, increased from SYP 296/litre to SYP 650/litre. The price of petrol (Octane 95) which is not subsidized, increased twice in October from SYP 450/litre to SYP 600/litre to then be further increased on 20 October, set at SYP 1,050/litre<sup>2</sup>.

Table 1: Old and new diesel prices set by the government

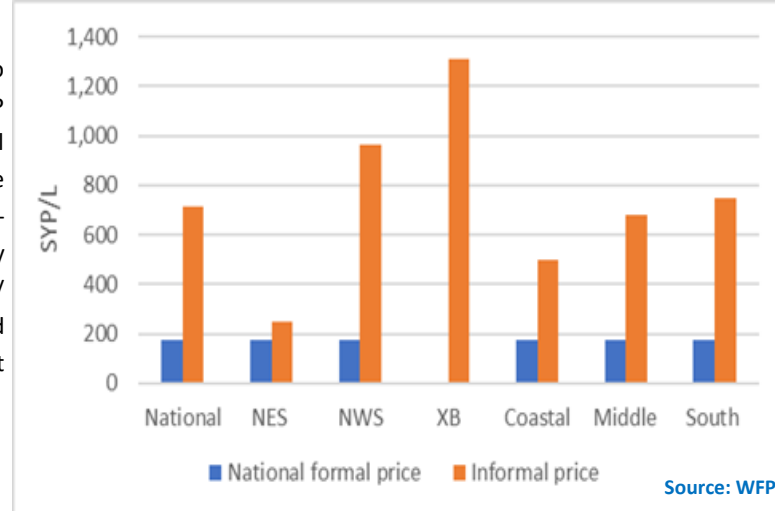
Fuel type	Old price	New price
Subsidized diesel for heating and transportation	180 SYP/litre	180 SYP/litre
Unsubsidized diesel for industrial facilities and commercial use	296 SYP/litre	650 SYP/litre
Subsidized Petrol (Octane 90)	250 SYP/litre	450 SYP/litre

The Government of Syria's (GoS) fuel subsidy is not implemented in Kurdish Self-Administration (KSA) areas of northeast Syria. Instead a different system is operated through KSA where the subsidized diesel price for transportation is SYP 75/litre for a specific allocation (between 200-400 liters) depending on the vehicle type and its use. Subsidized diesel for heating is the same price (SYP 75/litre) and each family receives up to two barrels of 220 liters each for each winter cycle (in other words 880 liters in total per winter). In Ar-Raqqa and Deir-ez-Zor KSA areas there is however only one cycle in practice.

### Informal diesel prices

In October 2020, the informal national average price of diesel continued to significantly increase by 21 percent since September 2020, reaching SYP 714/litre. Moreover, the informal price remains higher than the formal price (SYP 174/litre) by 310 percent (Chart 2). Idleb continued to report the highest informal price at SYP 1,363/litre (up seven percent m-o-m), followed by Aleppo at SYP 1,090/litre (up six percent m-o-m). Broken down by regions, the cross-border region reported the highest price of SYP 1,309/litre (up four percent m-o-m), followed by northwest Syria, which recorded the highest m-o-m increase in price, reaching SYP 966/litre (up 63 percent m-o-m).

Chart 2: Formal and informal diesel prices, SYP\*



### Impact on prices of food items

Along with the Syrian pound depreciation in the informal exchange rate market, the continuous increase in the diesel informal price was one of the main factors that caused a surge in the prices of vegetables, dairy products and other food items between September and October 2020. M-o-m, the national average price of tomatoes and onions surged by 44 and 32 percent reaching SYP 604/kg and 512/kg, respectively, as well as potatoes increased by 17 percent reaching SYP 466/kg. Additionally, the national average price of cheese increased by six percent m-o-m, reaching SYP 4,164/kg and the price of eggs increased by 14 percent reaching SYP 4,597/30 pieces.

### Butane gas prices

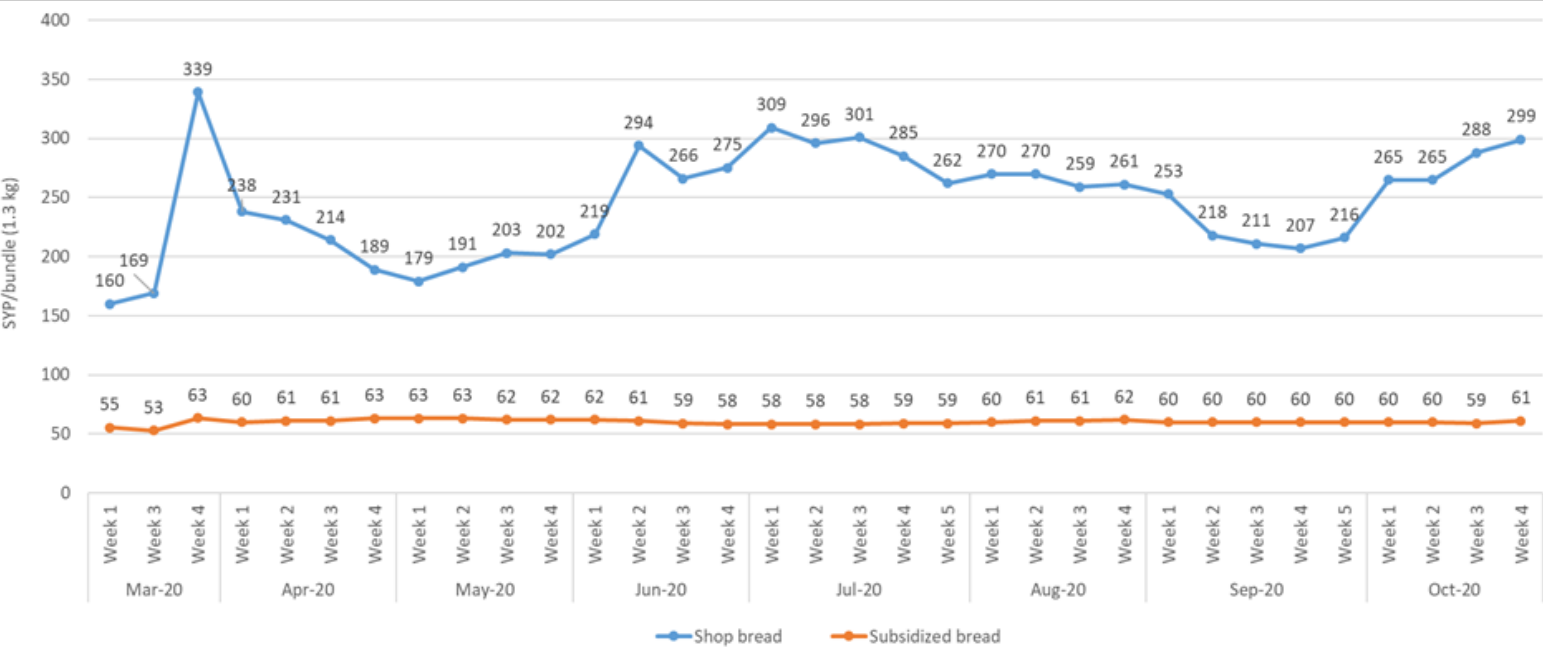
The informal national average price of one butane gas cylinder (25,000 L) increased by 17 percent m-o-m reaching SYP 13,292/refill in October 2020, while the formal butane gas cylinder remained unchanged at SYP 2,785/refill. The significant increase in price is a result of the limited availability of formal butane cylinders, whose refill cycle per family could take up to 80 days and not the expected 23 days. Dar'a reported the highest price at SYP 24,583/refill (up 43 percent m-o-m), while Al-Hasakeh reported the lowest price at SYP 5,917 (up six percent m-o-m). Broken down by regions, the cross-border region reported the highest informal refill price at SYP 19,392/refill (up nine percent m-o-m), while northeast Syria reported the lowest price at SYP 8,714/refill (up 12 percent m-o-m).

2. <https://sana.sy/?p=1240955>

\* No formal prices have been reported in the cross-border region because there is no subsidized diesel in the region.

# Continued: The Syrian government's adjustments to the fuel and bread subsidy

Chart 3: Week-on-week prices of Subsidized and Commercial Bread, SYP\*



## Bread

WFP food price monitoring

Faced with a shortage of wheat, in July 2020, the Government of Syria (GoS) started to distribute subsidized bread through the food and butane gas smart card system in Lattakia as a trial. The pilot scheme was found to be largely successful. As a result on 19 September GoS announced the introduction of a new distribution mechanism for selling subsidized bread. The new system allows each family: one bundle/day for a family of one or two people, two bundles/day for a family between three to four people, three bundles/day for a family between five to six people, and four bundles/day for a family of seven or more people.

The new subsidized bread selling system using smart cards has been applied across all governorates under control of the Government of Syria with the exception of Aleppo (where it is expected to be introduced shortly), As-Sweida, Dar’aa and Quneitra. However, not all districts of these governorates have been able to introduce the smart card system for bread due to lack of bakeries or due to the limited production capacity of the bakery. The bread smart card system also does not apply in Al-Hasakeh and parts of Ar-Raqqa and Deir- ez-Zor as they are under KSA as well as Idleb.

Initial results from the introduction of the bread smart card system seem to show that bread queues have largely reduced. However, there is a concern that those most vulnerable and those who depend the most on subsidized bread as a key staple of their diet, will be most affected by the introduction of this new scheme aimed at making wheat use more efficient.

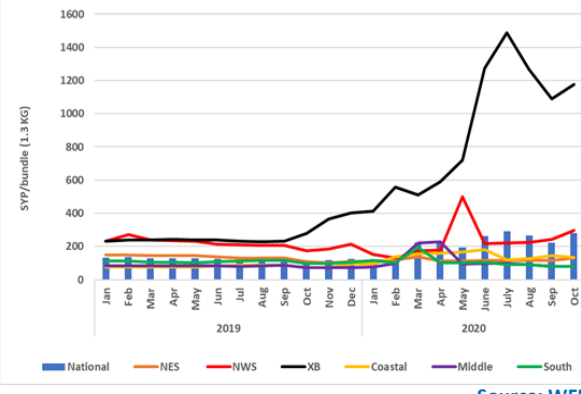
Furthermore, on 29 October the GoS announced that the price of subsidized wheat flour increased from SYP 30,000/MT to SYP 40,000/MT. The GoS also announced the increase in price of subsidized bread from SYP 50/bundle at the official price to SYP 75/bundle without a nylon bag and SYP 100/bundle with a nylon bag. The official bread bundle size was also reduced from 1.3 kg to 1.1 kg<sup>3</sup>.

## Bread prices

In October 2020, the national average price of subsidized bread remained unchanged at SYP 60/bundle. Northeast Syria reported the highest price of SYP 80/bundle (up ten percent m-o-m) due to bread agents charging more at distribution points, followed by the southern region at SYP 59/bundle (unchanged m-o-m). Conversely, the coastal region and northwest Syria reported the lowest price of SYP 50/bundle. The price for northwest Syria did not change m-o-m but significantly decreased by 24 percent m-o-m in the coastal region as a result of the effective government measures put in place to stop agents from charging extra fees. The bread subsidy price and quantity change was announced on 29 October, after WFP data had been collected. The change will be incorporated in graph price trends from WFP’s November reports onwards.

On the other hand, commercial bread price increased by 26 percent m-o-m reaching SYP 279/bundle. The cross-border region continued to report the highest price at SYP 1,176/bundle (up eight percent m-o-m), followed by northwest Syria at SYP 298/bundle (up 23 percent m-o-m). The southern region reported the lowest price of SYP 79/bundle (down one percent m-o-m), followed by the middle region at SYP 81/bundle (up two percent m-o-m).

Chart 4: Formal and informal diesel prices, SYP\*



Source: WFP

\*The bread subsidy price & quantity change was announced on 29 October, after WFP October data had already been collected. The change will be incorporated in price trends from November onwards.  
 \* WFP-monitored commercial bread includes resold public bread bundles. In Idleb and some of Aleppo cities where bread is not subsidized, the commercial bread WFP monitors only covers bread sold by retailers in shops.



**Legend on regions of analysis:** 'Northwest'=Aleppo; 'Cross-border'=Idleb & Aleppo [A'zaz, Atarib & Afrin]; 'Coastal'=Lattakia & Tartous; 'Northeast'=Ar-Raqqa, Al-Hasakeh & Deir-ez-Zor; 'Middle'=Damascus, Rural Damascus, Hama & Homs; 'South'=Dar'a, As-Sweida & Quneitra.

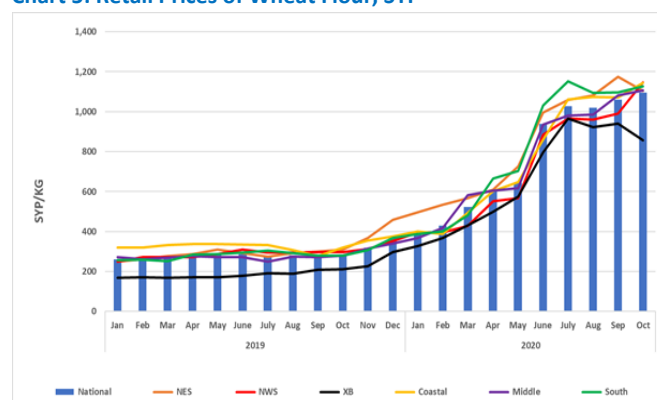
## Staple cereals retail prices

### Wheat Flour

M-o-m, the national average retail price of wheat flour throughout Syria increased in October 2020 by three percent, reaching SYP 1,094/kg. The wheat flour price has also increased by 283 percent y-o-y. Al-Hasakeh continued to record the highest wheat flour price (unchanged m-o-m) at SYP 1,283/kg, while Ar-Raqqa recorded the lowest price of SYP 989/kg (unchanged m-o-m).

Broken down by regions, northwest Syria reported the highest retail price at SYP 1,147/kg (up 16 percent m-o-m), followed by the coastal region at SYP 1,144/kg (up seven percent m-o-m), while the cross-border region continued to report the lowest retail price at SYP 856/kg (down nine percent m-o-m), followed by northeast Syria at SYP 1,105/kg (down six percent m-o-m) - chart 5.

Chart 5: Retail Prices of Wheat Flour, SYP

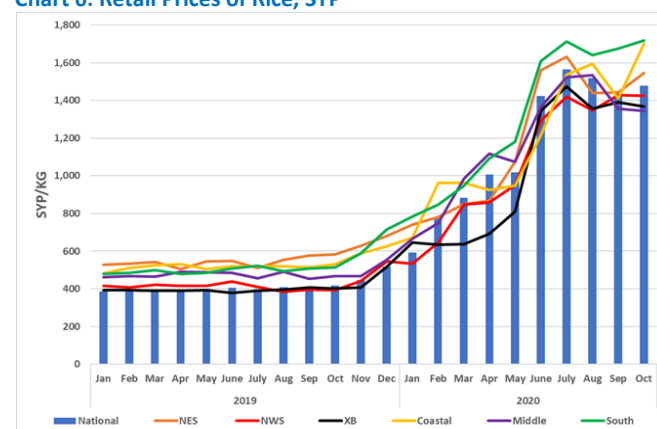


### Rice

The national average retail price of Egyptian white rice increased by two percent since September 2020 and by 255 percent since October 2019, reaching SYP 1,479/kg in October 2020. Quneitra continued to report the highest price at SYP 1,988/kg (up seven percent m-o-m), while Damascus reported the lowest price at SYP 1,236/kg (up one percent m-o-m).

M-o-m, the southern region of Syria continued to report the highest price at SYP 1,718/kg (up three percent), followed by the coastal region at SYP 1,700/kg (up 21 percent m-o-m), while the middle region reported the lowest price at SYP 1,344/kg (down one percent), followed by the cross-border region at SYP 1,367/kg (down two percent m-o-m) - Chart 6.

Chart 6: Retail Prices of Rice, SYP

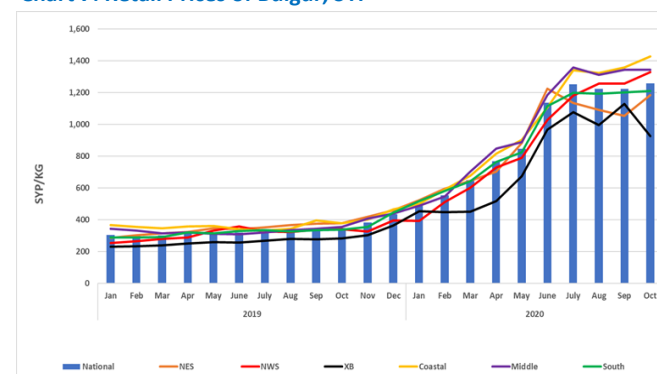


### Bulgur

In October 2020, the national average retail price of bulgur increased by three percent m-o-m and by 261 percent y-o-y, reaching SYP 1,256/kg. Tartous reported the highest bulgur retail price at SYP 1,481/kg (up seven percent m-o-m), while Idleb reported the lowest price at SYP 874/kg (down 29 percent m-o-m).

The coastal region reported the highest average bulgur price by region at SYP 1,428/kg (up five percent m-o-m), followed by the middle region at SYP 1,342/kg (unchanged m-o-m). The cross-border region reported the lowest average bulgur price at SYP 926/kg (down 18 percent m-o-m), followed by northeast Syria at SYP 1,182/kg (up 12 percent m-o-m) - Chart 7.

Chart 7: Retail Prices of Bulgur, SYP



Source: WFP Field Offices

## COVID-19 NFIs

Between September and October 2020, the prices of all monitored items decreased except for bleach that increased by two percent m-o-m to reach SYP 1,074/litre and hand gel that increase by one percent to reach SYP 936/50 ml.

The national average price of plastic gloves decreased by two percent to reach SYP 328/pair; the price of surgeon masks decreased by seven percent to reach SYP 344/mask; and the price of soap decreased by four percent to reach SYP 357/bar. Moreover, the price of alcohol spray decreased by three percent m-o-m to reach SYP 1,564/200 ml (Table 2).

Compared to February 2020 (before the COVID-19 related governmental measures), the prices of all COVID-19 related items have skyrocketed in October 2020. Plastic gloves recorded the highest increase of 390 percent, while soap recorded the lowest increase of 139 percent.

Table 2: Prices of COVID-19 items, SYP

National average	Oct average	% Change (Sep, Oct)
Surgeon mask	344	-7%
Gloves (pair)	328	-2%
Alcohol spray (200 ml)	1,564	-3%
Bleach bottle (L)	1,074	2%
Hand gel (50 ml)	936	1%
Soap bar	357	-4%

Source: WFP Field Offices

## Terms of Trade (ToT)<sup>4</sup>

### ToT between wage labour and wheat flour

The national average non-skilled labour wage, representing construction, off-loading and agricultural labour dropped by eight percent m-o-m and was SYP 4,421/day, in October 2020. The wage rate was 83 percent above its y-o-y level and 48 percent above levels recorded in April 2020 (six month ago) - Chart 8.

Broken down by regions, the cross-border region reported the highest decrease, by 29 percent m-o-m and reached SYP 4,363/day, followed by north-west Syria with a decrease of 14 percent m-o-m, reaching SYP 2,985/day. In winter, construction work decreases so demand for labourers decreases and wages as well as a result. Furthermore there is also decrease in demand for agriculture workers during winter.

The national average ToT between wheat flour and wage labour, a proxy indicator for purchasing power, decreased by seven percent between September and October 2020, reaching 4.04 kgs of wheat flour/daily wage. The national average ToT between wheat flour and wage labour further decreased by 18 percent compared to April 2020 and by 52 percent compared to October 2019. In other words, the national average daily wage of a non-skilled labourer could buy 4.04 kgs of wheat flour in October 2020 compared to 4.95 kgs in April 2020, and 8.46 kgs in October 2019, highlighting the worsening economic situation in Syria.

### ToT between sheep and wheat flour

The national average price of a two-year old alive male sheep decreased by one percent to SYP 379,582/sheep in October 2020 (Chart 9). Broken down by regions, the cross-border region recorded the highest average price across Syria at SYP 418,892/sheep (down 13 percent m-o-m), followed by the middle region at SYP 388,759 (unchanged m-o-m).

In October 2020, the ToT between an alive two-year old male sheep and wheat flour was 347 kg/sheep (down four percent m-o-m). Highlighting a deterioration in the exchange for livestock owners who could buy on average four percent less kgs of wheat compared to a month earlier.

Broken down by regions, the cross-border region continued to report the highest ToT at 489 kg/sheep (down four percent m-o-m). On the other hand, north-west Syria reported the lowest ToT at 289 kg/sheep (down 18 percent m-o-m).

### Exchange rate\*\*

In October 2020, the Syrian pound depreciated on average by six percent in the informal exchange rate market, reaching SYP 2,339/USD. Compared to a year ago, the Syrian pound has depreciated by 73 percent. The operational UN rate and the official exchange rate have both remained unchanged at SYP 1,250/USD compared to September 2020.

The highest informal exchange rate was reported in Lattakia and Tartous at SYP 2,380/USD (both depreciating by six percent m-o-m and by 73 and 74 percent y-o-y, respectively), followed by Deir-ez-Zor at SYP 2,373/USD (depreciating by six percent m-o-m; and depreciated 72 percent y-o-y). Conversely, the lowest rates were reported in Homs and Hama at SYP 2,250/USD (depreciating by two percent m-o-m and by 72 percent y-o-y), followed by Idleb at SYP 2,323/USD (depreciating by nine percent m-o-m and depreciated by 72 percent y-o-y).

Chart 8: Daily wage for unskilled labour, SYP

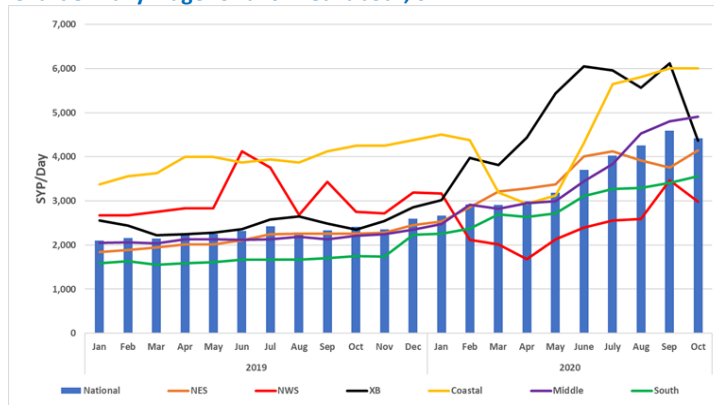


Chart 9: Price of livestock, SYP/one 2Y old sheep

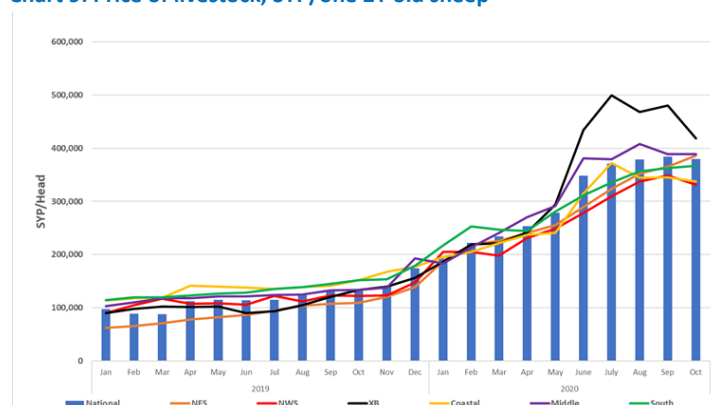


Table 3: Informal market exchange rate, 1 USD to SYP

Governorate	October 2020	% change (m-o-m)	% change (y-o-y)
Aleppo	2,346	-7%	-73%
Al-Hasakeh	2,330	-6%	-72%
Ar-Raqqa	2,326	-6%	-73%
As-Sweida	2,334	-6%	-73%
Damascus	2,370	-5%	-73%
Dar'a	2,354	-6%	-73%
Deir-ez-Zor	2,373	-6%	-73%
Hama	2,250	-2%	-72%
Homs	2,250	-2%	-72%
Idleb	2,323	-9%	-72%
Lattakia	2,380	-6%	-73%
Quneitra	2,358	-6%	-74%
Rural Damascus	2,370	-5%	-73%
Tartous	2,380	-6%	-74%
National average	2,339	-6%	-73%
Official rate	1,250	0%	-65%
UN operational rate	1,250	0%	-65%

4. The ToT are proxy indicators of the purchasing power of households that rely on livestock and/or casual labour as their main source of income for the purchase of cereals from local markets. ToT are important components of food security analysis. Changes in the terms of trade between wages/livestock and staple food commodities are indicative of the trends in purchasing power and the impact on the food security situation of households dependent on food purchases through income from daily wage labour and/or the sale of livestock.

\*\*When measuring exchange rates, there are two quotations. The first is the direct quotation where the US dollar is the base of measuring the change in exchange rate against the local currency. The second one is the indirect quotation where the local currency is the base of measuring the change in the exchange rate against the US dollar. The change in the exchange rate used below reflects the indirect quotation (measuring how much has the Syrian pound improved (appreciated) or worsened (depreciated) against the US dollar).



Table 2. Market Price of Main Commodities in Syrian Pounds: October 2020																				
Commodity	Governorate	Current Price	Price change	Price change	Price change	Average Change	Average Change	Average Change	Commodity	Governorate	Current Price	Price change	Price change	Price change	Average Change	Average Change	Average Change			
			1M (%)	6 M (%)	12 M (%)	1M	6 M	12 M				1M (%)	6 M (%)	12 M (%)	1M	6 M	12 M			
Bread Public (1.3 kg)	Aleppo	50	-	-6	-24	↔	↓	↓	Dates (kg)	Aleppo	4,140	15	124	384	↗	↑	↑			
	Damascus	50	-3	-13	19	↓	↓	↗		Damascus	4,100	10	99	290	↗	↑	↑			
	Dar'a	63	-	-4	13	↔	↓	↗		Dar'a	3,772	1	74	248	↗	↑	↑			
	Deir-ez-Zor	88	17	-18	108	↗	↓	↑		Deir-ez-Zor	2,771	-	61	177	↔	↑	↑			
	Hama	50	-	-	19	↔	↔	↗		Hama	3,951	-0.1	108	241	↓	↑	↑			
	Al-Hasakeh	63	25	25	49	↑	↑	↑		Al-Hasakeh	2,788	9.5	99	204	↗	↑	↑			
	Homs	50	-	-	21	↔	↔	↗		Homs	3,946	-0.2	108	297	↓	↑	↑			
	Idleb	NA*	-	-	-	↔	↔	↔		Idleb	2,466	-7	74	128	↓	↑	↑			
	Lattakia	50	-	-11	19	↔	↓	↗		Lattakia	4,575	7	79	346	↗	↑	↑			
	Quneitra	50	-	-	19	↔	↔	↗		Quneitra	3,549	-0.2	75	281	↓	↑	↑			
	Ar-Raqqa	87	-	2	37	↔	↗	↑		Ar-Raqqa	2,950	1.0	144	265	↗	↑	↑			
	Rural Damascus	71	-	10	55	↔	↗	↑		Rural Damascus	3,543	-1	82	245	↓	↑	↑			
	As-Sweida	50	-	-	9	↔	↔	↗		As-Sweida	3,546	3	117	170	↗	↑	↑			
	Tartous	50	-39	-33	19	↓	↓	↗		Tartous	3,850	2	51	276	↗	↑	↑			
Bread Shop (1.3 kg)	Aleppo	725	23	96	248	↗	↑	↑	Diesel (parallel market, L)	Aleppo	1,090	6	92	NA	↗	↑	↔			
	Damascus	NA	NA	NA	NA	↔	↔	↔		Damascus	663	30	95	NA	↑	↑	↔			
	Dar'a	50	-60	-	-62	↓	↔	↓		Dar'a	853	36	105	NA	↑	↑	↔			
	Deir-ez-Zor	65	-	-13	-40	↔	↔	↓		Deir-ez-Zor	350	27	14	NA	↑	↗	↔			
	Hama	80	-	7	18	↔	↗	↗		Hama	750	50	88	NA	↑	↑	↔			
	Al-Hasakeh	188	25	25	49	↑	↑	↑		Al-Hasakeh	150	-	-	NA	↔	↔	↔			
	Homs	80	-	7	33	↔	↗	↑		Homs	750	50	88	NA	↑	↑	↔			
	Idleb	1,057	-6	92	237	↓	↑	↑		Idleb	1,363	7	87	NA	↗	↑	↔			
	Lattakia	119	6	4	51	↗	↗	↑		Lattakia	600	22	48	NA	↗	↑	↔			
	Quneitra	75	-	3.4	9	↔	↗	↗		Quneitra	594	36	70	NA	↑	↑	↔			
	Ar-Raqqa	111	-	11	13	↔	↗	↗		Ar-Raqqa	247	-	6	NA	↔	↔	↔			
	Rural Damascus	100	-37	-73	19	↓	↓	↗		Rural Damascus	541	19	37	NA	↗	↑	↔			
	As-Sweida	100	-	-6	9	↔	↓	↗		As-Sweida	738	41	86	NA	↑	↑	↔			
	Tartous	151	-14	-27	139	↓	↓	↑		Tartous	400	-	-	NA	↔	↔	↔			
Bulgur (kg)	Aleppo	1,181	-1	80	272	↓	↓	↑	US Dollar exchange rate (parallel market, \$1)	Aleppo	2,346	-7%	-47%	-73%	↓	↓	↓			
	Damascus	1,308	0	60	296	↗	↑	↑		Damascus	2,370	-5%	-47%	-73%	↓	↓	↓			
	Dar'a	1,239	1	50	271	↗	↑	↑		Dar'a	2,354	-6%	-47%	-73%	↓	↓	↓			
	Deir-ez-Zor	942	11	40	146	↗	↑	↑		Deir-ez-Zor	2,373	-6%	-45%	-73%	↓	↓	↓			
	Hama	1,343	1	58	278	↗	↑	↑		Hama	2,250	-2%	-44%	-72%	↓	↓	↓			
	Al-Hasakeh	1,392	10	82	269	↗	↑	↑		Al-Hasakeh	2,330	-6%	-46%	-72%	↓	↓	↓			
	Homs	1,343	0	59	291	↗	↑	↑		Homs	2,250	-2%	-44%	-72%	↓	↓	↓			
	Idleb	874	-29	88	218	↓	↑	↑		Idleb	2,323	-9%	-47%	-72%	↓	↓	↓			
	Lattakia	1,375	3	72	249	↗	↑	↑		Lattakia	2,380	-6%	-47%	-73%	↓	↓	↓			
	Quneitra	1,072	-0.1	78	273	↓	↑	↑		Quneitra	2,358	-6%	-48%	-74%	↓	↓	↓			
	Ar-Raqqa	1,203	3	77	224	↗	↑	↑		Ar-Raqqa	2,326	-6%	-46%	-73%	↓	↓	↓			
	Rural Damascus	1,355	-0.5	56	257	↓	-5%	-47%		-73%	Rural Damascus	2,370	-5%	-47%	-73%	↓	↓	↓		
	As-Sweida	1,400	-	57	233	↔	↑	↑		As-Sweida	2,334	-6%	-47%	-73%	↓	↓	↓			
	Tartous	1,481	7	78	309	↗	↑	↑		Tartous	2,380	-6%	-47%	-74%	↓	↓	↓			
Butane Cylinder (parallel market, 25 kg)	Aleppo	17,631	40	41	NA	↑	↑	↔	Eggs (carton)	Aleppo	4,667	16	136	351	↗	↑	↑			
	Damascus	15,000	-	15	NA	↔	↔	↔		Damascus	4,594	2	98	296	↗	↑	↑			
	Dar'a	24,583	43	29.9	NA	↑	↑	↔		Dar'a	4,349	7	86	288	↗	↑	↑			
	Deir-ez-Zor	11,250	13	6	NA	↗	↗	↔		Deir-ez-Zor	4,525	13	82	267	↗	↑	↑			
	Hama	7,767	4	-45	NA	↗	↓	↔		Hama	4,675	13	82	306	↗	↑	↑			
	Al-Hasakeh	5,917	6	8	NA	↗	↗	↔		Al-Hasakeh	4,929	33	94	260	↑	↑	↑			
	Homs	7,750	5	-45	NA	↗	↓	↔		Homs	4,678	13	83	320	↗	↑	↑			
	Idleb	19,603	10	95	NA	↗	↑	↔		Idleb	5,255	37	270	512	↑	↑	↑			
	Lattakia	10,250	16	-32	NA	↗	↓	↔		Lattakia	4,950	5	104	313	↗	↑	↑			
	Quneitra	11,875	5	36	NA	↗	↑	↔		Quneitra	4,083	-4	84	271	↓	↑	↑			
	Ar-Raqqa	8,889	3	28	NA	↗	↑	↔		Ar-Raqqa	4,200	26	77	230	↑	↑	↑			
	Rural Damascus	14,095	-1	4	NA	↓	↗	↔		Rural Damascus	4,482	3	97	277	↗	↑	↑			
	As-Sweida	14,833	-3	23	NA	↓	↗	↔		As-Sweida	4,583	4	88	269	↗	↑	↑			
	Tartous	8,500	-	-44	NA	↔	↓	↔		Tartous	4,975	19	100	310	↗	↑	↑			
Cheese (kg)	Aleppo	4,843	14	164	218	↗	↑	↑	Eggplant (kg)	Aleppo	477	23	-1	319	↗	↓	↑			
	Damascus	3,825	3	113	197	↗	↑	↑		Damascus	326	-5	-54	59	↓	↓	↑			
	Dar'a	3,968	8	150	217	↗	↑	↑		Dar'a	319	2	-39	169	↗	↓	↑			
	Deir-ez-Zor	4,200	11	117	182	↗	↑	↑		Deir-ez-Zor	317	30	-33	95	↑	↓	↑			
	Hama	4,088	-0.2	121	177	↓	↑	↑		Hama	376	0.2	-19	182	↗	↓	↑			
	Al-Hasakeh	3,092	3	112	104	↗	↑	↑		Al-Hasakeh	475	12	-23	135	↗	↓	↑			
	Homs	4,106	0.3	123	202	↗	↑	↑		Homs	372	-1	-21	207	↓	↓	↑			
	Idleb	5,133	65	188	316	↑	↑	↑		Idleb	653	9	-3	442	↗	↓	↑			
	Lattakia	5,663	-6	100	224	↓	↑	↑		Lattakia	500	5	-1	74	↗	↓	↑			
	Quneitra	4,500	-2	169	424	↓	↑	↑		Quneitra	309	11	-24	142	↗	↓	↑			
	Ar-Raqqa	3,350	3	57	91	↗	↑	↑		Ar-Raqqa	407	9	-42	127	↗	↓	↑			
	Rural Damascus	3,506	1	120	154	↗	↑	↑		Rural Damascus	342	-0.1	-42	72	↓	↓	↑			
	As-Sweida	3,829	4	95	186	↗	↑	↑		As-Sweida	292	21	-47	106	↗	↓	↑			
	Tartous	4,675	11	78	192	↗	↑	↑		Tartous	488	12	-23	179	↗	↓	↑			
Chickpeas (kg)	Aleppo	1,285	17	76	194	↗	↑	↑	Fish (tuna, canned) - 160 gm	Aleppo	1,207	5.49	139.87	274	↗	↑	↑			
	Damascus	1,806	25	114	251	↑	↑	↑		Damascus	1,661	-4	129	274	↓	↑	↑			
	Dar'a	1,292	-0.03	90	199	↓	↑	↑		Dar'a	1,553	1	190	429	↗	↑	↑			
	Deir-ez-Zor	1,000	1	55	66	↗	↑	↑		Deir-ez-Zor	1,258	2	172	336	↗	↑	↑			
	Hama	1,411	1	85	179	↗	↑	↑		Hama	1,861	0.45	108	307	↗	↑	↑			
	Al-Hasakeh	1,579	6	68	203	↗	↑	↑		Al-Hasakeh	1,854	6	155	332	↗	↑	↑			
	Homs	1,395	-1	82	213	↓	↑	↑		Homs	1,858	0.35	154	522	↗	↑	↑			
	Idleb	907	-11	108	134	↓	↑	↑		Idleb	1,096	-5	74	136	↓	↑	↑			
	Lattakia	1,450	4	95	218	↗	↑	↑		Lattakia	1,463	5	100	238	↗	↑	↑			
	Quneitra	1,050	-2	110	229	↓	↑	↑		Quneitra	1,583	-6	180	494	↓	↑	↑			
	Ar-Raqqa	1,389	2	87	158	↗	↑	↑		Ar-Raqqa	1,802	14	245	459	↗	↑	↑			
	Rural Damascus	1,319	0.2	68	139	↗	↑	↑		Rural Damascus	1,656	-9	152	327	↓	↑	↑			
	As-Sweida	1,267	-	95	138	↔	↑	↑		As-Sweida	1,567	3	115	237	↗	↑	↑			
	Tartous	1,575	13	89	241	↗	↑	↑		Tartous	1,781	4	129	312	↗	↑	↑			
Key:	↑	Price increase equal to or greater than 25 percent									↑	Increase equal to or greater than 25 percent								
	↗	Price increase between 0.1 and 25 percent									↗	Increase between 0.1 and 25 percent								
↔	No price change									↔	No change									
↓	Price decrease below normal price fluctuation									↓	Decrease below normal fluctuation									
NA* There is no subsidized bread in Idleb																				
												* Key for unskilled labor wage and exchange rate:								



Commodity	Governorate	Current Price	Price change 1M (%)	Price change 6 M (%)	Price change 12 M (%)	Average Change 1M	Average Change 6 M	Average Change 12 M	Commodity	Governorate	Current Price	Price change 1M (%)	Price change 6 M (%)	Price change 12 M (%)	Average Change 1M	Average Change 6 M	Average Change 12 M
Iodised salt (kg)	Aleppo	504	12	99	193	↗	↑	↑	Sheep 2Y old Male (head)	Aleppo	370,077	-9	51	203	↓	↑	↑
	Damascus	175	0	62	35	↔	↑	↑		Damascus	452,222	-0.2	73	253	↓	↑	↑
	Dar'a	306	0	97	120	↔	↑	↑		Dar'a	342,611	2	33	105	↗	↑	↑
	Deir-ez-Zor	121	4	-40	21	↗	↓	↗		Deir-ez-Zor	441,875	8	92	340	↗	↑	↑
	Hama	751	-1	114	430	↓	↑	↑		Hama	365,154	1	38	157	↗	↑	↑
	Al-Hasakeh	400	0	276	300	↔	↑	↑		Al-Hasakeh	407,917	7	72	315	↗	↑	↑
	Homs	749	0.04	114	467	↗	↑	↑		Homs	364,780	0.5	37	187	↗	↑	↑
	Idleb	271	43	130	365	↑	↑	↑		Idleb	416,563	-13	89	175	↓	↑	↑
	Lattakia	175	-10	20	59	↓	↗	↑		Lattakia	319,375	-9	38	113	↓	↑	↑
	Quneitra	310	0	119	205	↔	↑	↑		Quneitra	393,750	0.6	54	163	↗	↑	↑
	Ar-Raqqa	350	-2	243	250	↓	↑	↑		Ar-Raqqa	335,278	3	34	174	↗	↑	↑
	Rural Damascus	167	26	57	59	↑	↑	↑		Rural Damascus	409,250	-1	43	201	↓	↑	↑
	As-Sweida	333	0	89	122	↔	↑	↑		As-Sweida	389,583	2	113	268	↗	↑	↑
	Tartous	219	25	63	150	↑	↑	↑		Tartous	355,875	5	47	133	↗	↑	↑
Red split lentils (kg)	Aleppo	1,614	13	87	368	↗	↑	↑	Sugar (kg)	Aleppo	1,256	5	97	267	↗	↑	↑
	Damascus	1,406	-0.2	74	272	↓	↑	↑		Damascus	1,169	0	77	260	↗	↑	↑
	Dar'a	1,325	0	53	276	↔	↑	↑		Dar'a	1,160	5	97	241	↗	↑	↑
	Deir-ez-Zor	1,050	0.3	110	140	↗	↑	↑		Deir-ez-Zor	1,467	5	104	319	↗	↑	↑
	Hama	1,424	1.5	25	303	↗	↗	↑		Hama	1,184	10	105	264	↗	↑	↑
	Al-Hasakeh	1,475	4	65	293	↗	↑	↑		Al-Hasakeh	1,400	6	76	223	↗	↑	↑
	Homs	1,427	3	25	306	↗	↗	↑		Homs	1,186	10	104	253	↗	↑	↑
	Idleb	1,457	-8	77	348	↓	↑	↑		Idleb	1,462	18	101	303	↗	↑	↑
	Lattakia	1,488	-1	49	213	↓	↑	↑		Lattakia	1,275	6	120	292	↗	↑	↑
	Quneitra	1,189	4	106	234	↗	↑	↑		Quneitra	1,125	1	90	285	↗	↑	↑
	Ar-Raqqa	1,450	1	51	235	↗	↑	↑		Ar-Raqqa	1,340	5	74	231	↗	↑	↑
	Rural Damascus	1,367	2	62	234	↗	↑	↑		Rural Damascus	1,325	4	101	278	↗	↑	↑
	As-Sweida	1,383	0	66	261	↔	↑	↑		As-Sweida	1,254	11	95	260	↗	↑	↑
	Tartous	1,538	7	55	208	↗	↑	↑		Tartous	1,325	8	119	293	↗	↑	↑
Meat (beef, kg)	Aleppo	14,826	17	104	250	↗	↑	↑	Tomato (kg)	Aleppo	575	50	-7	270	↑	↓	↑
	Damascus	14,056	0.2	74	211	↗	↑	↑		Damascus	481	27	-27	122	↑	↓	↑
	Dar'a	11,361	1	55	147	↗	↑	↑		Dar'a	457	25	-36	292	↗	↓	↑
	Deir-ez-Zor	12,854	4	75	164	↗	↑	↑		Deir-ez-Zor	508	41	-28	165	↑	↓	↑
	Hama	13,347	5	78	193	↗	↑	↑		Hama	756	58	5	380	↑	↗	↑
	Al-Hasakeh	14,833	1	83	185	↗	↑	↑		Al-Hasakeh	758	37	-3	219	↑	↓	↑
	Homs	13,321	4	78	197	↗	↑	↑		Homs	759	56	6	512	↑	↗	↑
	Idleb	13,975	6	151	290	↗	↑	↑		Idleb	857	107	41	243	↑	↑	↑
	Lattakia	13,000	8	50	145	↗	↑	↑		Lattakia	575	15	-30	100	↗	↓	↑
	Quneitra	13,167	-4	65	172	↓	↑	↑		Quneitra	391	35	-44	376	↑	↓	↑
	Ar-Raqqa	9,189	1	56	182	↗	↑	↑		Ar-Raqqa	700	15	1.6	227	↗	↗	↑
	Rural Damascus	13,000	0.05	69	173	↗	↑	↑		Rural Damascus	473	39	-31	138	↑	↓	↑
	As-Sweida	12,042	6	55	156	↗	↑	↑		As-Sweida	515	43	-26	225	↑	↓	↑
	Tartous	12,250	5	42	163	↗	↑	↑		Tartous	688	40	-6	206	↑	↓	↑
White beans (kg)	Aleppo	3,488	23	210	595	↗	↑	↑	Unskilled Labor wage*	Aleppo	3,330	-24	14	21	↓	↗	↗
	Damascus	3,600	-1	81	277	↓	↑	↑		Damascus	6,333	1	89	175	↗	↑	↑
	Dar'a	3,769	5	103	349	↗	↑	↑		Dar'a	3,694	3	25	128	↗	↑	↑
	Deir-ez-Zor	2,033	0	19	179	↔	↗	↑		Deir-ez-Zor	2,500	0	-33	0	↔	↓	↔
	Hama	3,511	6	92	284	↗	↑	↑		Hama	4,471	1	79	103	↗	↑	↑
	Al-Hasakeh	2,392	10	73	228	↗	↑	↑		Al-Hasakeh	5,000	0	122	245	↔	↑	↑
	Homs	3,490	6	94	526	↗	↑	↑		Homs	4,508	1	80	139	↗	↑	↑
	Idleb	2,044	13	166	546	↗	↑	↑		Idleb	5,041	-9	18	191	↓	↗	↑
	Lattakia	4,225	27	140	397	↑	↑	↑		Lattakia	6,000	0	96	41	↔	↑	↑
	Quneitra	1,800	-1	37	194	↓	↑	↑		Quneitra	3,875	7	66	94	↗	↑	↑
	Ar-Raqqa	2,433	5	34	129	↗	↑	↑		Ar-Raqqa	4,667	0	27	77	↗	↑	↑
	Rural Damascus	3,138	9	68	241	↗	↑	↑		Rural Damascus	5,137	5	40	98	↗	↑	↑
	As-Sweida	1,917	23	26	116	↗	↑	↑		As-Sweida	2,500	0	8	55	↔	↗	↑
	Tartous	4,113	41	142	311	↑	↑	↑		Tartous	6,000	0	113	41	↔	↑	↑
Vegetable oil (L)	Aleppo	3,305	13	154	431	↗	↑	↑	Wheat Flour (kg)	Aleppo	995	1	94	253	↗	↑	↑
	Damascus	3,800	24	179	430	↗	↑	↑		Damascus	1,133	0	95	289	↔	↑	↑
	Dar'a	3,647	17	153	406	↗	↑	↑		Dar'a	1,139	5	64	300	↗	↑	↑
	Deir-ez-Zor	3,000	8	111	319	↗	↑	↑		Deir-ez-Zor	1,100	3	98	214	↗	↑	↑
	Hama	3,629	15	135	400	↗	↑	↑		Hama	1,150	3	88	277	↗	↑	↑
	Al-Hasakeh	2,615	10	100	305	↗	↑	↑		Al-Hasakeh	1,283	0	75	362	↔	↑	↑
	Homs	3,631	15	135	429	↗	↑	↑		Homs	1,150	3	88	371	↗	↑	↑
	Idleb	2,577	27	141	355	↑	↑	↑		Idleb	995	9	92	312	↗	↑	↑
	Lattakia	3,525	14	136	427	↗	↑	↑		Lattakia	1,088	8	82	222	↗	↑	↑
	Quneitra	3,542	14	142	457	↗	↑	↑		Quneitra	1,088	-3	74	302	↓	↑	↑
	Ar-Raqqa	2,439	9	110	368	↗	↑	↑		Ar-Raqqa	989	0	75	225	↔	↑	↑
	Rural Damascus	3,676	16	176	416	↗	↑	↑		Rural Damascus	1,012	2	69	234	↗	↑	↑
	As-Sweida	3,900	20	113	251	↗	↑	↑		As-Sweida	1,167	9	77	306	↗	↑	↑
	Tartous	3,675	17	149	416	↗	↑	↑		Tartous	1,200	6	98	300	↗	↑	↑
Parsley (packet)	Aleppo	311	25	156	345	↗	↑	↑	Pasta (spaghetti)	Aleppo	1,498	3	79	201	↗	↑	↑
	Damascus	89	0	-2	116	↔	↓	↑		Damascus	1,533	0	86	229	↔	↑	↑
	Dar'a	175	46	75	110	↑	↑	↑		Dar'a	1,429	3	95	130	↗	↑	↑
	Deir-ez-Zor	94	50	58	7	↑	↑	↗		Deir-ez-Zor	979	1	16	118	↗	↗	↑
	Hama	169	-7	125	213	↓	↑	↑		Hama	1,677	0.1	23	166	↗	↗	↑
	Al-Hasakeh	185	25	85	98	↑	↑	↑		Al-Hasakeh	1,533	6	63	207	↗	↑	↑
	Homs	175	-2	133	233	↓	↑	↑		Homs	1,677	-0.04	22	258	↓	↗	↑
	Idleb	324	-13	68	548	↓	↑	↑		Idleb	1,330	31	93	369	↑	↑	↑
	Lattakia	138	38	29	38	↑	↑	↑		Lattakia	2,200	13	115	340	↗	↑	↑
	Quneitra	165	33	126	320	↑	↑	↑		Quneitra	1,413	14	101	187	↗	↑	↑
	Ar-Raqqa	171	81	71	62	↑	↑	↑		Ar-Raqqa	1,833	1	63	293	↗	↑	↑
	Rural Damascus	96	3	3	115	↗	↗	↑		Rural Damascus	1,546	4	107	226	↗	↑	↑
	As-Sweida	228	64	135	265	↑	↑	↑		As-Sweida	1,519	7	96	187	↗	↑	↑
	Tartous	150	20	33	71	↗	↑	↑		Tartous	2,650	4	147	607	↗	↑	↑
Rice (kg)	Aleppo	1,417	4	75	252	↗	↑	↑	Yogurt (kg)	Aleppo	1,539	32	239	375	↑	↑	↑
	Damascus	1,236	1	13	166	↗	↗	↑		Damascus	700	0	56	134	↔	↑	↑
	Dar'a	1,636	0	61	200	↔	↑	↑		Dar'a	797	10	110	199	↗	↑	↑
	Deir-ez-Zor	1,454	4	76	179	↗	↑	↑		Deir-ez-Zor	550	15	56	73	↗	↑	↑
	Hama	1,372	-2	19	165	↓	↗	↑		Hama	775	-0.4	72	107	↓	↑	↑
	Al-Hasakeh	1,629	10	79	146	↗	↑	↑		Al-Hasakeh	733	5	78	99	↗	↑	↑
	Homs	1,377	-2	20	238	↓	↗	↑		Homs	776	0.1	72	119	↗	↑	↑
	Idleb	1,295	-12	102	238	↓	↑	↑		Idleb	1,151	46	186	294	↑	↑	↑
	Lattakia	1,650	13	71	214	↗	↑	↑		Lattakia	813	-1	76	150	↓	↑	↑
	Quneitra	1,988	7	92	293	↗	↑	↑		Quneitra	635	7	93	195	↗	↑	↑
	Ar-Raqqa	1,550	6	79	171	↗	↑	↑		Ar-Raqqa	865	3	60	83	↗	↑	↑
	Rural Damascus	1,328	1	24	160	↗	↗	↑		Rural Damascus	649	5	65	121	↗	↑	↑
	As-Sweida	1,425	1	33	232	↗	↑	↑		As-Sweida	800	0	135	223	↔	↑	↑
	Tartous	1,750	29	97	226	↑	↑	↑		Tartous	900	6	106	167	↗	↑	↑