



@WFP/Jessica Lawson

Highlights

- o The national average price of a standard reference food basket increased by 13 percent between November and December 2020, reaching SYP 111,676 (USD 89 at the official exchange rate 1,250/USD).
- o Families' heating diesel entitlement decreased from 200 litres per month to 100 litres per month across nine governorates. Hereby causing the price of informal heating diesel to increase by 20 percent between November and December 2020, reaching SYP 1,050/litre.
- o Key-food items prices like red split lentils and vegetable oil have increased by 16 and 15 percent, respectively.
- o The SYP/USD informal exchange rate depreciated by a further 6 percent in December 2020, reaching a monthly national average of SYP 2,795/US dollar. The official exchange rate remained unchanged at SYP 1,250/US dollar.
- o Syria's Central Bureau of Statistics reported an average inflation rate of 200 percent in 2020 compared to 2019, with goods inflation reaching 300 percent.

o For further info., please contact:

Jan Michiels at
Jan.Michiels@wfp.org

Pakinam Moussa at
Pakinam.Moussa@wfp.org

Standard Food Basket

The price of a standard reference food basket¹ showed no sign of stabilizing in December. The national average price of a standard food basket increased by 13 percent compared to November 2020, reaching SYP 111,676. This is the highest national average rate yet since WFP started monitoring prices in Syria in 2013. The national average food basket price was 33 percent higher than the price recorded in June 2020 (six months ago) as well as being 236 percent higher compared to the level recorded in December 2019 (Figure 1).

The increase in the food basket price is mainly led by the depreciation of the Syrian pound in the informal market as well as the price increase of key food-items. For example the price of red split lentils and vegetable oil have increased by 16 and 15 percent, respectively, between November and December 2020. Moreover, renewed fuel shortages across Syria have further contributed to the food basket price increase.

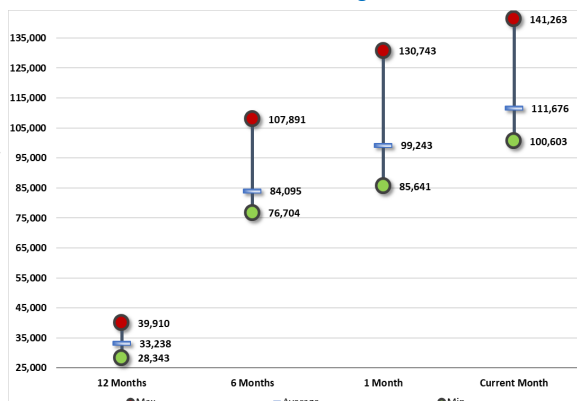
Month-on-month (m-o-m), all 14 governorates in Syria reported an increasing average reference food basket price in December 2020. The highest m-o-m increase of 18 percent was reported in Aleppo reaching SYP 119,563, while the lowest increase of two percent was reported in Quneitra reaching SYP 104,623.

December 2020, marked the first time that all governorates reported an average standard food basket price at above SYP 100,000. The increases are in-line with recent reports from Syria's Central Bureau of Statistics reporting an average inflation rate of 200 percent in 2020 compared to 2019, with goods inflation reaching 300 percent.

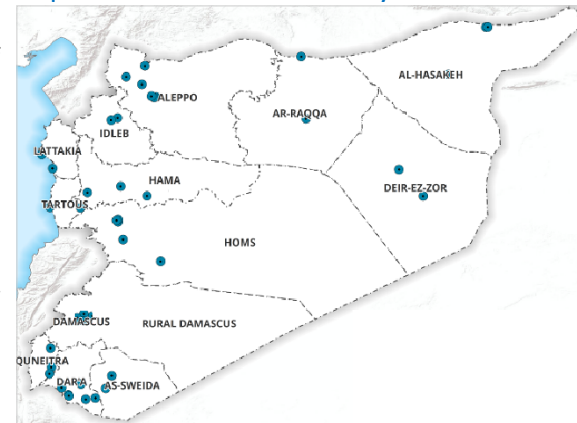
Figure 1: Food basket cost and changes, SYP

Governorate	Price December 2020	1 month change	6 months changes	12 months changes
Aleppo	SYP 119,563	18%	55%	277%
Damascus	SYP 106,495	15%	23%	276%
Dar'a	SYP 106,353	8%	25%	209%
Deir-ez-Zor	SYP 100,603	17%	28%	218%
Hama	SYP 108,550	14%	42%	247%
Al-Hasakeh	SYP 103,800	13%	17%	189%
Homs	SYP 108,892	14%	41%	250%
Idlib	SYP 141,263	8%	31%	254%
Lattakia	SYP 119,330	12%	55%	237%
Ar-Raqqa	SYP 109,184	16%	27%	213%
Rural Damascus	SYP 107,547	16%	23%	254%
As-Sweida	SYP 106,814	12%	35%	226%
Tartous	SYP 120,450	12%	47%	246%
Quneitra	SYP 104,623	2%	18%	219%
Average	SYP 111,676	13%	33%	236%

Chart 1: National min., max. and average food basket cost, SYP



Map 1: Location of markets monitored by WFP



1. The standard food basket is a group of essential food commodities. In Syria, the food basket is set at a group of dry goods providing 2,060 kcal a day for a family of five during a month. The basket includes 37 kg bread, 19 kg rice, 19 kg lentils, 5 kg of sugar, and 7 litres of vegetable oil.

Fuel crisis
Overview

In September 2020, the Syrian Baniyas oil refinery in Homs, which covers a large proportion of Syria’s demand for oil, was under maintenance causing shortage in oil production. Additionally, the lack of hard currency needed to purchase fuel from international markets as well as the lack of access to international markets, the depreciation of the Syrian pound in the informal market and the unilateral coercive measures on Syria as well as Iran making fuel imports challenging, have all contributed to the lack of oil in Syria. The Syrian government as a result in September 2020 reduced its vehicle petrol allocation from 40 litres to 30 litres per vehicle every four to seven days depending on whether the vehicle is for private or commercial use (i.e. taxis), while keeping the 100 liters entitlement per vehicle per month in place. Furthermore the allocation for unsubsidized petrol also decreased from 400 liters to 100 liters per month per vehicle in September 2020 due to the shortage of petrol in Syria.

By December 2020, the oil minister announced that Syria required 146,000 barrels of crude oil/day while its current production was at 24,000 barrels/day. In other words meaning that Syria is dealing with a 122,000 barrels/day shortfall. The gap is usually addressed through importation of crude oil or its derivatives. Prior to 2011, Syria used to produce 350,000 barrels/day mostly in northeast Syria and used to export about 250,000 barrels, whereas currently importing oil and its derivatives cost SYP 4.4 billion per day² (USD 3.52 million at the official rate of SYP 1,250/USD). Moreover, Arnous, the prime minister, assured that the price of diesel used for heating, agriculture and transport will not increase and indicated that the diesel production at the Baniyas refinery in Homs had increased from one million litres to two million litres per year after the maintenance works. Furthermore, in the next two months, it is expected that the petrol production will also increase from one million litres to two million litres³.

Nevertheless, in December 2020, the Syrian government had to take more measures to tackle the lack of fuel and reduce the heating diesel entitlement per family from 200 litres to 100 litres. The decision has been implemented in Rural Damascus, Quneitra, As-Sweida, Homs, Hama, Dar’a, Aleppo, Lattakia and Tartous while it is yet to be implemented in Damascus, Deir-ez-Zor, Ar-Raqqa and Al-Hasakeh.

The subsidized price of diesel for heating as well as for other sectors (e.g. agriculture and the public sector) remains at SYP 180/litre and the subsidized diesel used for bakeries remains at SYP 135/litre, as well. However, the actual price at which people buy subsidized diesel from petrol stations ranges between SYP 185-200/litre, due to the added service fees. The price set by the government for unsubsidized diesel used for commercial and industrial purposes remains at SYP 650/litre.

A different system is applied in northeast Syria where subsidized diesel price for transportation is SYP 75/litre for a specific allocation (between 200-400 liters) depending on the vehicle type and its use. Subsidized diesel for heating is at the same price of SYP 75/litre and each family can get up to two barrels of 220 liters per winter cycle (in other words: 880 liters in total per winter). However, in Ar-Raqqa and Deir-ez-Zor, there is only one cycle in operation.

Diesel prices

In December 2020, the informal national average price of transport diesel continued to significantly increase by 19 percent since November 2020 and by 117 percent since June 2020 (six months ago), reaching SYP 1,015/litre. Moreover, the informal price remains higher than the formal price (SYP 174/litre) by 483 percent (Chart 2).

Idleb continued to report the highest informal price at SYP 1,736/litre (up 12 percent m-o-m), followed by Aleppo at SYP 1,363/litre (up 16 percent m-o-m). On the other hand, Al-Hasakeh reported the lowest price at SYP 150/litre (unchanged m-o-m), followed by Ar-Raqqa at SYP 357/litre (unchanged m-o-m).

Broken down by region, the cross-border region reported the highest price at SYP 1,652/litre (up ten percent m-o-m), while northeast Syria reported the lowest price at SYP 421/litre (up 29 percent m-o-m).

Moreover, as a result of the decrease of subsidized heating diesel allocation, the informal national average price of heating diesel has increased also because of the increased demand along with the winter season. The informal national average price of heating diesel increased by 20 percent between November and December 2020, reaching SYP 1,050/litre.

Idleb reported the highest informal price at SYP 1,446/litre (up 24 percent m-o-m), followed by Aleppo at SYP 1,326/litre (up 19 percent m-o-m). On the other hand, Al-Hasakeh reported the lowest price at SYP 200/litre (unchanged m-o-m), followed by Ar-Raqqa at SYP 246/litre (up six percent m-o-m).

Broken down by region, the cross-border region reported the highest price at SYP 1,399/litre (up 14 percent m-o-m), while northeast Syria reported the lowest price at SYP 502/litre (up 22 percent m-o-m).

Chart 2: Formal and informal transport diesel prices, SYP*

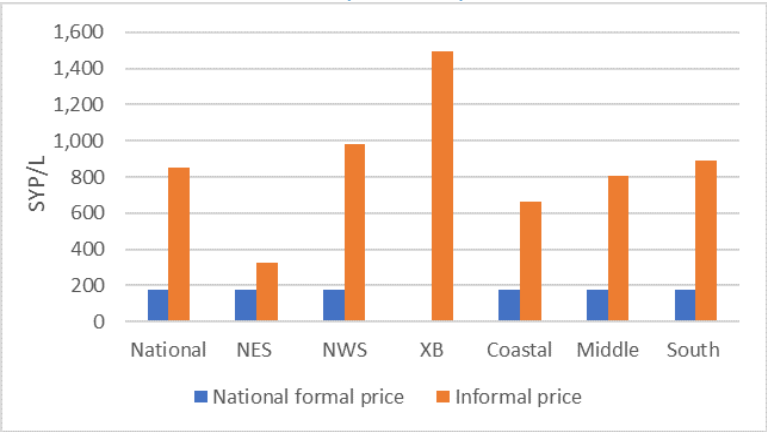
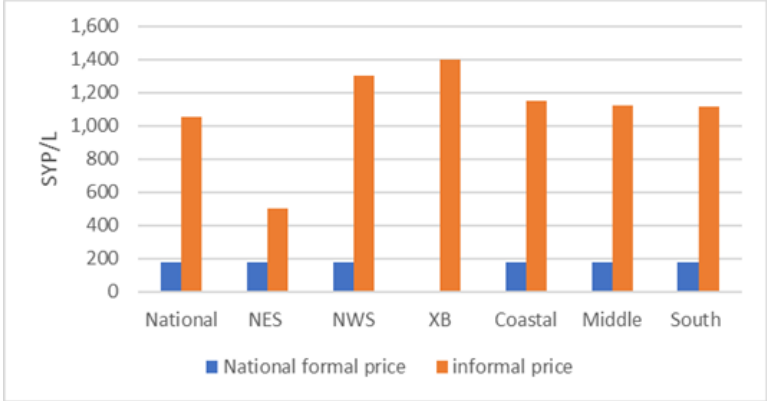


Chart 3: Formal and informal heating diesel prices, SYP*



Source: WFP Field Offices

*No formal prices have been reported in the cross-border region because there is no subsidized diesel or butane gas in the region.
2. "Oil minister: Within a few months, we will not have to import oil derivatives." *Economy2day*, 1 Dec. 2020.
3. "Arnous: There will be no increase in the diesel price and every citizen will get their allocation." *B2B*, 6 Dec. 2020.

Legend on regions of analysis: 'Northwest'=Aleppo; 'Cross-border'=Idlib & Aleppo [A'zaz, Atarib & Afrin]; 'Coastal'=Lattakia & Tartous; 'Northeast'=Ar-Raqqa, Al-Hasakeh & Deir-ez-Zor; 'Middle'=Damascus, Rural Damascus, Hama & Homs; 'South'=Dar'a, As-Sweida & Quneitra.

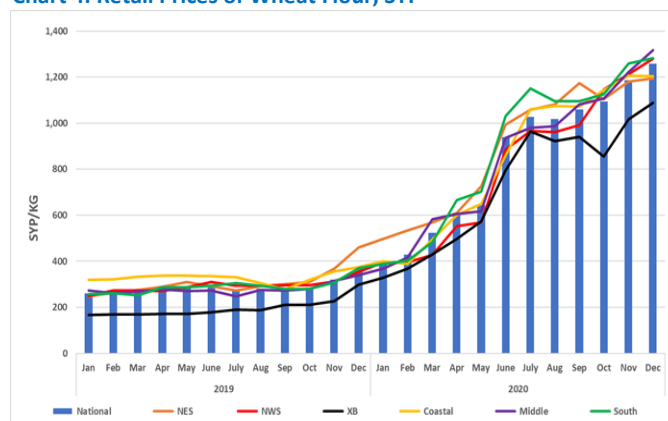
Staple cereals retail prices

Wheat Flour

M-o-m, the national average retail price of wheat flour throughout Syria increased in December 2020 by six percent, reaching SYP 1,258/kg. The wheat flour price has also increased by 243 percent y-o-y. As-Sweida recorded the highest wheat flour price at SYP 1,570/kg (up five percent m-o-m), while Ar-Raqqa recorded the lowest price of SYP 1,017/kg (up 0.3 percent m-o-m).

Broken down by regions, Syria's middle region reported the highest retail price at SYP 1,316/kg (up eight percent m-o-m), followed by the southern region at SYP 1,282/kg (up two percent m-o-m), while the cross-border region continued to report the lowest retail price at SYP 1,088/kg (up seven percent m-o-m), followed by north-east Syria at SYP 1,195/kg (up one percent m-o-m) - Chart 4.

Chart 4: Retail Prices of Wheat Flour, SYP

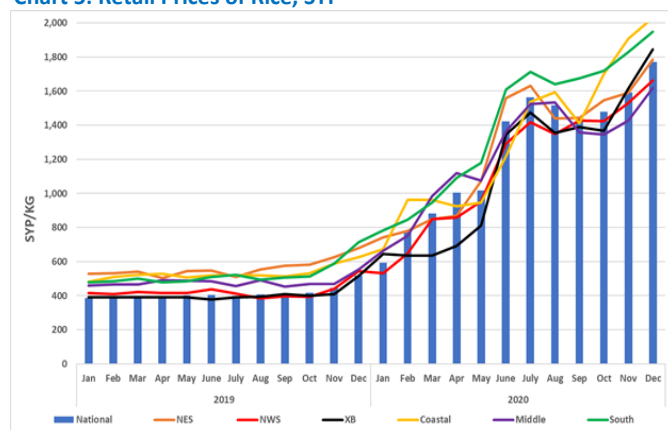


Rice

The national average retail price of Egyptian white rice increased by 11 percent since November 2020 and by 241 percent since December 2019, reaching SYP 1,771/kg in December 2020. Tartous reported the highest price at SYP 2,050/kg (up three percent m-o-m), while Hama reported the lowest price at SYP 1,533/kg (up eight percent m-o-m).

M-o-m, the coastal region reported the highest price at SYP 2,030/kg (up six percent), followed by the southern region at SYP 1,948/kg (up seven percent m-o-m), while the middle region reported the lowest price at SYP 1,617/kg (up 13 percent), followed by northwest Syria at SYP 1,663/kg (up nine percent m-o-m) - Chart 5.

Chart 5: Retail Prices of Rice, SYP

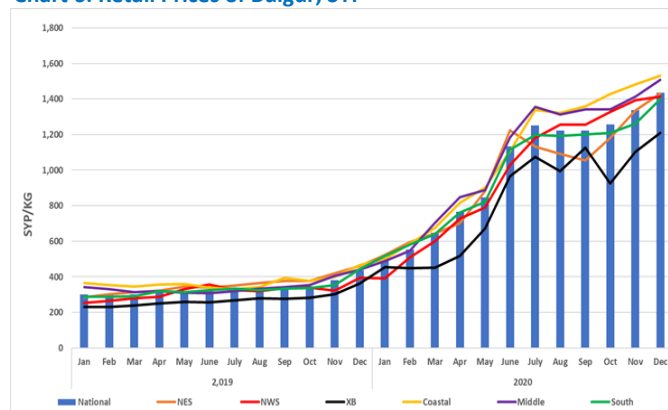


Bulgur

In December 2020, the national average retail price of bulgur increased by seven percent m-o-m and by 230 percent y-o-y reaching SYP 1,434/kg. Al-Hasakeh reported the highest bulgur retail price at SYP 1,627/kg (up six percent m-o-m), while Idlib reported the lowest price at SYP 1,079/kg (up six percent m-o-m).

The coastal region reported the highest average bulgur price by region at SYP 1,530/kg (up three percent m-o-m), followed by Syria's middle region at SYP 1,508/kg (up seven percent m-o-m). On the other hand, the cross-border region reported the lowest average bulgur price at SYP 1,210/kg (up ten percent m-o-m), followed by the southern region at SYP 1,398/kg (up eleven percent m-o-m) - Chart 6.

Chart 6: Retail Prices of Bulgur, SYP

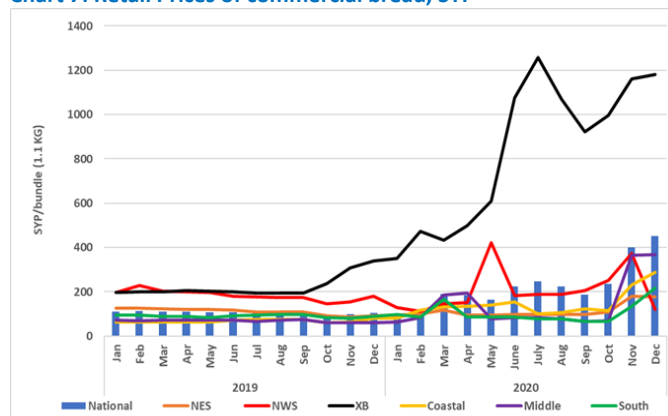


Bread**

The national average price of subsidized bread in December 2020 reached SYP 107/bundle (up seven percent m-o-m). In October the Government of Syria increased subsidised bread prices from SYP 50/bundle to SYP 75/bundle (sold without nylon bag) and SYP 100/bundle (sold with nylon bag). At the same time the weight of the bread bundle reduced from 1.3kg/bundle to 1.1kg/bundle. The recent further increase is also related to the subsidized bread price increase in Ar-Raqqa on 20 December from SYP 95/bundle to SYP 107/bundle. Additionally, subsidized bread is re-sold by authorized agents and in many cases these agents add extra fees to the bread price.

Moreover, commercial bread price increased by 13 percent m-o-m and by 325 percent y-o-y, reaching SYP 451/bundle. Idlib reported the highest commercial bread price at SYP 1,177/bundle (up four percent m-o-m), while Ar-Raqqa reported the lowest price of SYP 136/bundle (down three percent m-o-m).

Chart 7: Retail Prices of commercial bread, SYP



Source: WFP Field Offices

**WFP-monitored commercial bread includes resold public bread bundles. In Idlib and some of Aleppo cities where bread is not subsidized, the commercial bread WFP monitors only covers bread sold by retailers in shops. All bread past prices have been adjusted to reflect the new bread bundle size of 1.1 kg instead of 1.3 kg.

Butane gas prices

The informal national average price of one butane gas cylinder (25,000 L) increased by 16 percent m-o-m and by 36 percent since June 2020 (six months ago), reaching SYP 19,014/refill in December 2020. Instead the formal butane gas cylinder remained unchanged at SYP 2,785/refill. The significant increase in price of informal butane gas is a consequence of the continued lack of availability of formal butane cylinders whose refill cycle per family could take up to 80 days and not 23 days (as per the entitlement's cycle) along with the increased demand for heating during winter. Dar'a reported the highest price of butane gas at SYP 35,646/refill (down four percent m-o-m), while Hama reported the lowest price at SYP 7,773 (unchanged m-o-m).

Exchange rate

When measuring exchange rates, there are two quotations. The first is the direct quotation where the US dollar is the base of measuring the change in exchange rate against the local currency. The second one is the indirect quotation where the local currency is the base of measuring the change in the exchange rate against the US dollar. The change in the exchange rate used below reflects the indirect quotation (measuring how much has the Syrian pound improved (appreciated) or worsened (depreciated) against the US dollar).

In December 2020, the Syrian pound depreciated by six percent in the informal exchange rate market and reached SYP 2,795/USD. Compared to a year ago, the Syrian pound has depreciated by 69 percent. On the other hand, the official exchange rate has remained unchanged at SYP 1,250/USD compared to November 2020. However, the official rate has lost 65 percent of its value since December 2019.

The highest informal exchange rate was reported in Deir-ez-Zor at SYP 2,827/USD (depreciating by five percent m-o-m; and depreciating by 69 percent y-o-y), followed by Al-Hasakeh at SYP 2,823/USD (depreciating by eight percent m-o-m; and depreciating by 67 percent y-o-y).

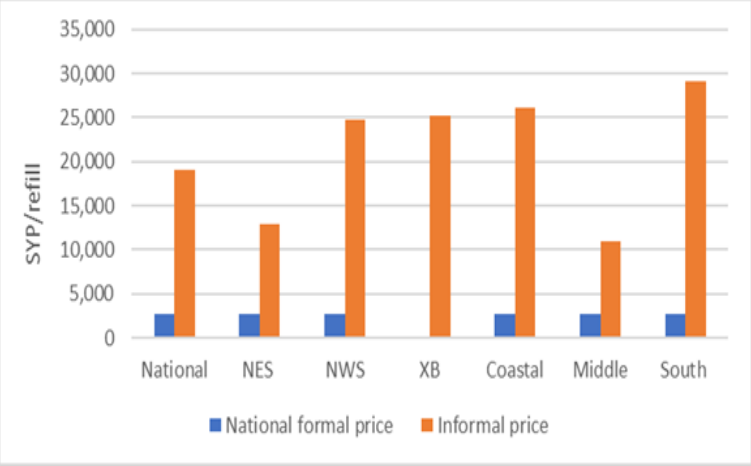
Conversely, the lowest rates were reported in As-Sweida at SYP 2,764/USD (depreciating by five percent m-o-m; and depreciating by 67 percent y-o-y), followed by Dar'a at SYP 2,770/USD (depreciating by five percent m-o-m; and depreciated by 68 percent y-o-y).

Vegetables prices

Most vegetables prices have increased in December 2020 as a result of seasonality in addition to context driven increases such as lack of fuel and the worsening informal exchange rate. M-o-m, the national average price of eggplants has increased by 57 percent reaching SYP 847/kg. The cross-border region reported the highest average price at SYP 1,457/kg (up 52 percent m-o-m), while the southern region reported the lowest average price of SYP 668/kg (up 73 percent m-o-m).

Additionally, the national average price of tomatoes has increased by 49 percent m-o-m. The cross-border region reported the highest average price of SYP 1,546/kg (up 12 percent m-o-m), while the southern region reported the lowest average price of SYP 967/kg (up 76 percent m-o-m).

Chart 8: Formal and informal butane gas prices, SYP***

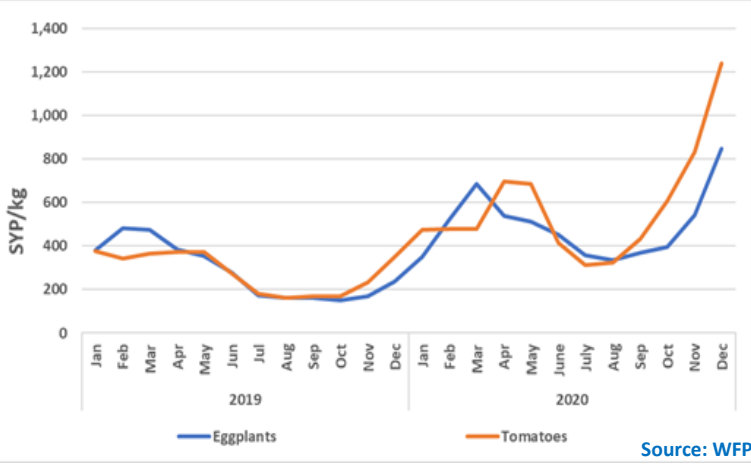


Source: WFP field offices

Table 1: Informal market exchange rate, 1 USD to SYP

Governorate	December 2020	% change (m-o-m)	% change (y-o-y)
Aleppo	2,793	-6%	-69%
Al-Hasakeh	2,823	-8%	-67%
Ar-Raqqa	2,802	-8%	-68%
As-Sweida	2,764	-5%	-67%
Damascus	2,787	-4%	-71%
Dar'a	2,770	-5%	-68%
Deir-ez-Zor	2,827	-5%	-69%
Hama	2,800	-5%	-68%
Homs	2,800	-5%	-68%
Idleb	2,777	-8%	-70%
Lattakia	2,810	-5%	-68%
Quneitra	2,775	-5%	-69%
Rural Damascus	2,788	-5%	-71%
Tartous	2,810	-5%	-68%
National average	2,795	-6%	-69%
Official rate	1,250	0%	-65%
UN operational rate	1,250	0%	-44%

Chart 9: Retail prices of vegetables, SYP



Source: WFP

***No formal prices have been reported in the cross-border region because there is no subsidized diesel or butane gas in the region.

Terms of Trade (ToT)⁴

ToT between wage labour and wheat flour

The national average non-skilled labour wage, which represents construction, off-loading and agricultural labour increased by 11 percent m-o-m, reaching SYP 5,134/day in December 2020. Moreover, the wage rate was 98 percent above its y-o-y level and 39 percent above levels recorded in June 2020 (six months ago) - Chart 10.

Broken down by regions, the coastal region reported the highest wage rate of SYP 7,300/day (up 23 percent m-o-m), followed by the middle region at SYP 5,514/day (up nine percent m-o-m). The increase in daily wage rates is a result of the increased cost of living pushing labourers to demand higher wage rates and the limited availability of daily labourers. On the other hand, northwest Syria reported the lowest wage rate of SYP 3,325/day (unchanged m-o-m), followed by northeast Syria at SYP 4,343/day (up two percent m-o-m).

The national average ToT between wheat flour and wage labour, a proxy indicator for purchasing power, increased by five percent between November and December 2020 reaching 4.1 kgs of wheat flour/daily wage. The increase was related to a higher increase in the daily wage rate which exceeded the increase in the wheat flour price. In other words, the national average daily wage of a non-skilled labourer could buy 4.1 kgs of wheat flour in December 2020 compared to 3.9 kgs in June 2020, and 7.1 kgs in December 2019.

Broken down by regions, the coastal region reported the highest ToT at 6.1 kgs (up 23 percent m-o-m), followed by the cross-border region at 5.4 kgs (up 11 percent m-o-m). On the other hand, northwest Syria reported the lowest ToT at 2.6 kgs (down five percent m-o-m), followed by the southern region at 3.4 kgs (up 12 percent m-o-m).

ToT between sheep and wheat flour

The national average price of a two-year old alive male sheep decreased by two percent m-o-m and increased by 115 percent y-o-y to reach SYP 374,108/sheep in December 2020 (Chart 12).

Broken down by regions, northeast Syria reported the highest average price across Syria at SYP 437,505/sheep (up two percent m-o-m), followed by the coastal region at SYP 378,275 (up two percent m-o-m). On the other hand, northwest Syria reported the lowest price at SYP 319,208/sheep (unchanged m-o-m), followed by the southern region at SYP 359,879 (down one percent m-o-m).

In December 2020, the ToT between an alive two-year old male sheep and wheat flour was 297 kg/sheep (down eight percent m-o-m). Highlighting a deterioration in the exchange for livestock owners who could buy on average eight percent less kgs of wheat compared to a month earlier. The ToT has also increased by 20 percent since June 2020 (six months ago) and by 37 percent since December 2019.

Broken down by regions, northeast Syria reported the highest ToT at 366 kg/sheep (up one percent m-o-m), followed by the cross-border region at 346 kg/sheep (down 13 percent m-o-m). On the other hand, northwest Syria reported the lowest ToT at 250 kg/sheep (down five percent m-o-m), followed by the southern region at 281 kg/sheep (down three percent m-o-m).

Chart 10: Daily wage for unskilled labour, SYP

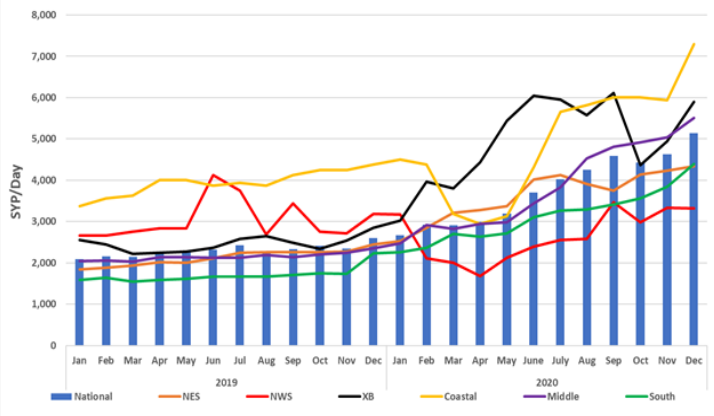


Chart 11: Terms of Trade (ToT) between wheat flour and wage rate

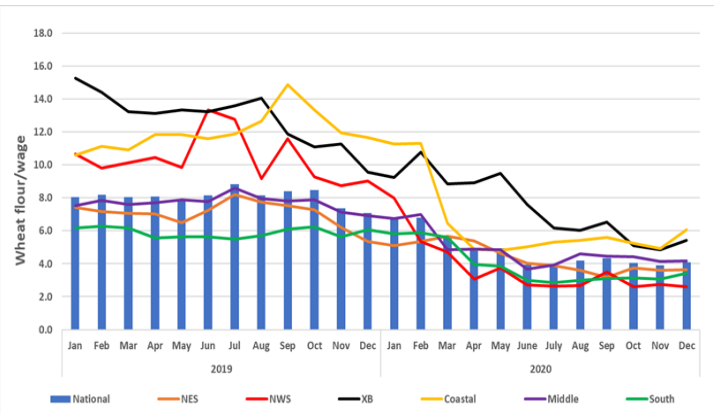


Chart 12: Price of livestock, SYP/one 2Y old sheep

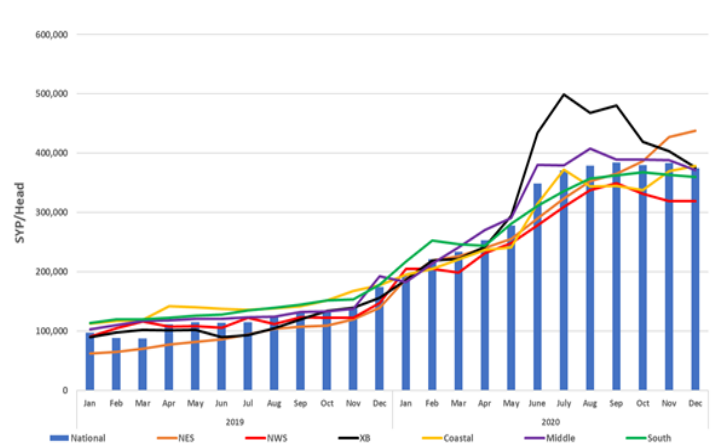
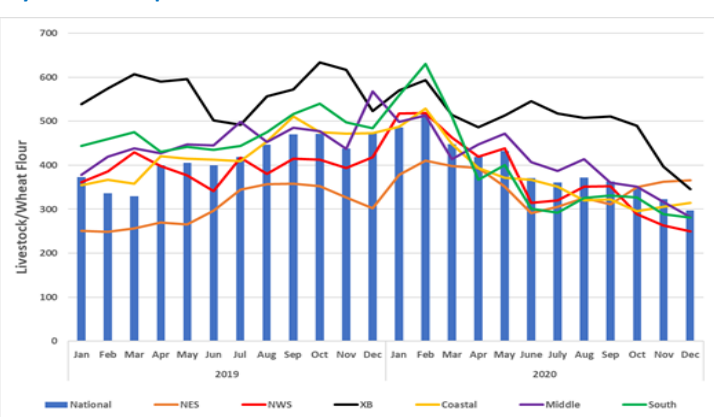


Chart 13: Terms of Trade (ToT) between wheat flour and the price of a 2 year old sheep



Source: WFP

4.The ToT are proxy indicators of the purchasing power of households that rely on livestock and/or casual labour as their main source of income for the purchase of cereals from local markets. ToT are important components of food security analysis. Changes in the terms of trade between wages/livestock and staple food commodities are indicative of the trends in purchasing power and the impact on the food security situation of households dependent on food purchases through income from daily wage labour and/or the sale of livestock.

COVID-19 NFIs

Table 2: Prices of key COVID-19 items, week-on-week in December 2020, SYP

National average	Week 1 (SYP)	Week 2 (SYP)	Week 3 (SYP)	Week 4 (SYP)	Week 5 (SYP)	% Change (December W5 & W1)
Surgeon mask	339	340	338	339	343	1%
Gloves (pair)	358	356	356	358	353	-1%
Alcohol spray (200 ml)	1,706	1,712	1,708	1,725	1,740	2%
Bleach bottle (L)	1,122	1,111	1,116	1,124	1,158	3%
Hand gel (50 ml)	950	962	971	967	979	3%
Soap bar	371	381	371	369	390	5%

Between November and December 2020, the prices of all monitored COVID-19 related non-food items have increased except for surgeon masks that remained unchanged at SYP 340/mask. The national average price of soap reached SYP 376/bar (up six percent m-o-m), hand gel reached SYP 966/50 ml (up four percent m-o-m) and bleach reached SYP 1,126/litre (up two percent m-o-m). Moreover, the price of alcohol spray reached SYP 1,718/200 ml (up six percent m-o-m) and of plastic gloves reached SYP 356/pair (up three percent m-o-m).

Compared to June 2020 (six months ago), the price of surgeon masks and soap bars have both decreased by 12 and three percent, respectively. However, the price of plastic gloves, alcohol spray, hand gel and bleach have all increased by 55, 38, 26 and 13 percent, respectively.

Furthermore, when compared to February 2020 (prior to the COVID-19 outbreak in Syria), all items' prices have significantly increased. The price of alcohol spray, surgeon masks and plastic gloves have increased by 311, 330 and 432 percent, respectively. Also, the price of soap bars, bleach and hand gel have increased by 153, 171 and 301 percent, respectively.

Key food-items retail prices

Vegetable oil

M-o-m, the national average retail price of vegetable oil throughout Syria increased in December 2020 by 15 percent reaching SYP 4,371/litre. The national average price of vegetable oil increased by 50 percent since June 2020 (six months ago) and by 307 percent since December 2019. Lattakia recorded the highest vegetable oil price at SYP 4,700/kg (up 14 percent m-o-m), while Ar-Raqqqa recorded the lowest price of SYP 3,431/kg (up 20 percent m-o-m).

Broken down by regions, the coastal region reported the highest price at SYP 4,690/litre (up 14 percent m-o-m), followed by northwest Syria at SYP 4,664/litre (up 14 percent m-o-m). Conversely, the cross-border region reported the lowest price of SYP 3,557 (up 18 percent m-o-m), followed by northeast Syria at SYP 3,729 (up 23 percent m-o-m).

Red Split lentils

In December 2020, the national average retail price of red split lentils increased by 16 percent m-o-m to reach SYP 1,809/kg. The price also increased by 44 percent since June 2020 (six months ago) and by 282 percent since December 2019. Aleppo recorded the highest red split lentils price at SYP 2,216/kg (up 22 percent m-o-m), while Quneitra recorded the lowest price of SYP 1,277/kg (down eight percent m-o-m).

Broken down by regions, the cross-border region reported the highest price of SYP 2,171/kg (up 14 percent m-o-m), followed by northwest Syria at SYP 2,099/kg (up 26 percent m-o-m). Conversely, the southern region reported the lowest price of SYP 1,385/kg (up three percent m-o-m), followed by north-east Syria at SYP 1,762 (up 16 percent m-o-m).

Table 3: Monthly price changes of key COVID-19 items, SYP

National average	Feb-20 (SYP)	Dec-20 (SYP)	% Change (Dec-Feb)
Surgeon mask	79	340	330%
Gloves (pair)	67	356	432%
Alcohol spray (200 ml)	418	1,718	311%
Bleach bottle (L)	416	1,126	171%
Hand gel (50 ml)	241	966	301%
Soap bar	149	376	153%

Source: WFP

Chart 14: Retail Prices of Vegetable Oil, SYP

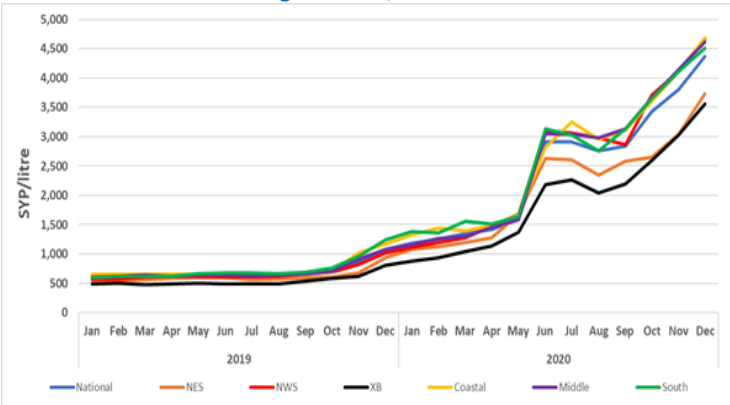
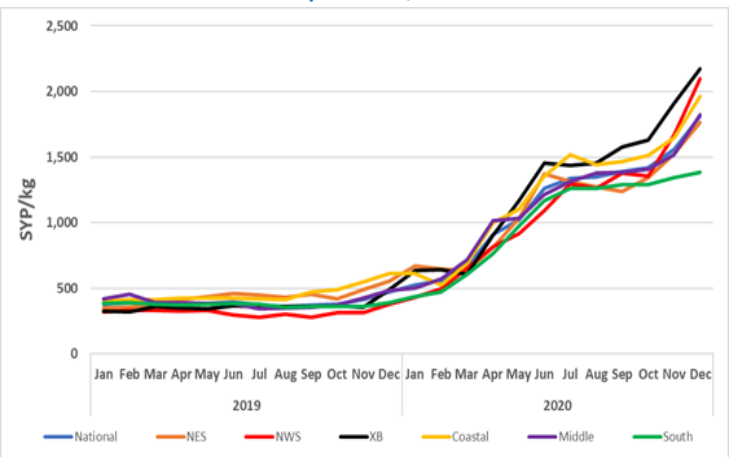


Chart 15: Retail Prices of Red Split lentils, SYP



Source: WFP

Table 2. Market Price of Main Commodities in Syrian Pounds: December 2020																		
Commodity	Governorate	Current Price	Price change	Price change	Price change	Average Change	Average Change	Average Change	Commodity	Governorate	Current Price	Price change	Price change	Price change	Average Change	Average Change	Average Change	
			1M (%)	6 M (%)	12 M (%)	1M	6 M	12 M				1M (%)	6 M (%)	12 M (%)	1M	6 M	12 M	
Bread Public (1.1 kg)	Aleppo	119	19	178	181	↗	↑	↑	Dates (kg)	Aleppo	4,171	-3	43	322	↓	↑	↑	
	Damascus	100	-	113	136	↔	↑	↑		Damascus	4,116	0.04	44	260	↗	↑	↑	
	Dar'a	126	18	134	167	↗	↑	↑		Dar'a	4,013	4	23	200	↗	↗	↑	
	Deir-ez-Zor	103	3	29	62	↗	↑	↑		Deir-ez-Zor	3,380	-	33	194	↔	↑	↑	
	Hama	100	-	136	136	↔	↑	↑		Hama	4,419	9	63	253	↗	↑	↑	
	Al-Hasakeh	100	-	136	136	↔	↑	↑		Al-Hasakeh	3,587	21	51	216	↗	↑	↑	
	Homs	100	-	136	136	↔	↑	↑		Homs	4,407	9	65	253	↗	↑	↑	
	Idleb	NA*	-	-	-	↔	↔	↔		Idleb	2,843	-1	16	119	↓	↗	↑	
	Lattakia	103	3	62	143	↗	↑	↑		Lattakia	5,980	15	33	286	↗	↑	↑	
	Quneitra	124	24	193	193	↗	↑	↑		Quneitra	4,072	5	26	197	↗	↑	↑	
	Ar-Raqqa	100	5	37	67	↗	↑	↑		Ar-Raqqa	3,942	19	39	379	↗	↑	↑	
	Rural Damascus	100	-	93	124	↔	↑	↑		Rural Damascus	4,189	11	45	265	↗	↑	↑	
As-Sweida	100	-	136	136	↔	↑	↑	As-Sweida	4,460	10	61	229	↗	↑	↑			
Tartous	105	1	59	147	↗	↑	↑	Tartous	4,950	18	27	288	↗	↑	↑			
Bread Shop (1.1 kg)	Aleppo	921	27	9	207	↑	↗	↑	Diesel (parallel market, L)	Aleppo	1,363	16	63	NA	↗	↑	↔	
	Damascus	758	NA	NA	NA	↔	↔	↔		Damascus	947	29	186	NA	↑	↑	↔	
	Dar'a	NA	NA	NA	NA	↔	↔	↔		Dar'a	1,121	22	169	NA	↗	↑	↔	
	Deir-ez-Zor	158	21	158	44	↗	↑	↑		Deir-ez-Zor	788	37	159	NA	↑	↑	↔	
	Hama	169	12	149	216	↗	↑	↑		Hama	900	-	125	NA	↔	↑	↔	
	Al-Hasakeh	250	-5	97	134	↓	↑	↑		Al-Hasakeh	150	-	-	NA	↔	↔	↔	
	Homs	170	13	151	219	↗	↑	↑		Homs	900	-	125	NA	↔	↑	↔	
	Idleb	1,177	4	22	200	↗	↗	↑		Idleb	1,736	12	35	NA	↗	↑	↔	
	Lattakia	410	24	216	477	↗	↑	↑		Lattakia	1,000	16	176	NA	↗	↑	↔	
	Quneitra	NA	NA	NA	NA	↔	↔	↔		Quneitra	1,046	23	185	NA	↗	↑	↔	
	Ar-Raqqa	136	-3	48	91	↓	↑	↑		Ar-Raqqa	357	-	48	NA	↔	↑	↔	
	Rural Damascus	592	-9	394	733	↓	↑	↑		Rural Damascus	961	50	177	NA	↑	↑	↔	
As-Sweida	217	44	156	178	↑	↑	↑	As-Sweida	1,073	21	150	NA	↗	↑	↔			
Tartous	169	28	-6	90	↑	↓	↑	Tartous	1,000	116	167	NA	↑	↑	↔			
Bulgur (kg)	Aleppo	1,401	6	37	265	↗	↑	↑	US Dollar exchange rate (parallel market, \$1)	Aleppo	2,793	-6	-12	-69	↓	↓	↓	
	Damascus	1,477	6	26	254	↗	↑	↑		Damascus	2,787	-4	-9	-71	↓	↓	↓	
	Dar'a	1,396	9	20	206	↗	↗	↑		Dar'a	2,770	-5	-10	-68	↓	↓	↓	
	Deir-ez-Zor	1,347	14	28	217	↗	↑	↑		Deir-ez-Zor	2,827	-5						

Commodity	Governorate	Current Price	Price change 1M (%)	Price change 6 M (%)	Price change 12 M (%)	Average Change 1M	Average Change 6 M	Average Change 12 M	Commodity	Governorate	Current Price	Price change 1M (%)	Price change 6 M (%)	Price change 12 M (%)	Average Change 1M	Average Change 6 M	Average Change 12 M
Iodised salt (kg)	Aleppo	562	3	17	176	↗	↗	↗	Sheep 2Y old Male (head)	Aleppo	337,733	-3	-2	130	↓	↓	↑
	Damascus	336	45	152	155	↑	↑	↑		Damascus	347,289	-14	-22	152	↓	↓	↑
	Dar'a	338	10	22	143	↗	↗	↑		Dar'a	345,371	0.003	8	71	↗	↗	↑
	Deir-ez-Zor	272	67	3	172	↑	↑	↑		Deir-ez-Zor	403,267	-10	37	172	↓	↑	↑
	Hama	752	2	48	527	↗	↑	↑		Hama	386,151	-1	14	72	↓	↗	↑
	Al-Hasakeh	400	0	39	300	↔	↑	↑		Al-Hasakeh	450,000	7	56	238	↗	↑	↑
	Homs	751	-0.3	46	526	↓	↑	↑		Homs	388,317	0.1	14	76	↗	↗	↑
	Idlib	445	4	110	434	↗	↑	↑		Idlib	386,491	-7	-12	127	↓	↓	↑
	Lattakia	455	21	304	21	↗	↑	↗		Lattakia	381,550	2	3	128	↗	↗	↑
	Quneitra	336	8	23	148	↗	↗	↑		Quneitra	357,500	-4	8	115	↓	↗	↑
	Ar-Raqqa	383	3	42	283	↗	↑	↑		Ar-Raqqa	452,000	8	57	231	↗	↑	↑
	Rural Damascus	425	84	280	208	↑	↑	↑		Rural Damascus	350,714	-8	-20	139	↓	↓	↑
	As-Sweida	358	0	20	126	↔	↗	↑		As-Sweida	422,667	6	71	232	↗	↑	↑
Tartous	450	64	213	80	↑	↑	↑	Tartous	375,000	3	45	100	↗	↑	↑		
Red split lentils (kg)	Aleppo	2,216	22	79	431	↗	↑	↑	Sugar (kg)	Aleppo	1,565	11	18	238	↗	↗	↑
	Damascus	1,660	15	32	269	↗	↑	↑		Damascus	1,453	11	14	199	↗	↗	↑
	Dar'a	1,317	-2	2	251	↓	↗	↑		Dar'a	1,481	5	20	194	↗	↗	↑
	Deir-ez-Zor	1,557	33	36	228	↑	↑	↑		Deir-ez-Zor	1,592	2	4	264	↗	↗	↑
	Hama	1,908	23	61	282	↗	↑	↑		Hama	1,418	5	17	234	↗	↗	↑
	Al-Hasakeh	1,697	9	9	254	↗	↗	↑		Al-Hasakeh	1,693	11	0	218	↗	↓	↑
	Homs	1,917	23	57	286	↗	↑	↑		Homs	1,418	5	17	233	↗	↗	↑
	Idlib	2,021	11	33	291	↗	↑	↑		Idlib	1,843	13	27	224	↗	↑	↑
	Lattakia	1,950	16	56	212	↗	↑	↑		Lattakia	1,545	6	12	264	↗	↗	↑
	Quneitra	1,277	-8	23	220	↓	↗	↑		Quneitra	1,448	9	6	207	↗	↗	↑
	Ar-Raqqa	1,942	12	36	198	↗	↑	↑		Ar-Raqqa	1,691	17	9	242	↗	↗	↑
	Rural Damascus	1,698	16	42	270	↗	↑	↑		Rural Damascus	1,466	11	8	227	↗	↗	↑
	As-Sweida	1,700	23	43	296	↗	↑	↑		As-Sweida	1,533	9	26	225	↗	↑	↑
Tartous	1,975	22	36	229	↗	↑	↑	Tartous	1,540	9	35	252	↗	↑	↑		
Meat (beef, kg)	Aleppo	14,528	-2	30	220	↓	↑	↑	Tomato (kg)	Aleppo	1,250	29	174	263	↑	↑	↑
	Damascus	13,956	0.3	12	194	↗	↗	↑		Damascus	1,260	98	252	390	↑	↑	↑
	Dar'a	12,321	6	15	138	↗	↗	↑		Dar'a	1,143	100	293	243	↑	↑	↑
	Deir-ez-Zor	12,783	-3	35	169	↓	↑	↑		Deir-ez-Zor	1,075	29	236	231	↑	↑	↑
	Hama	14,661	4	60	157	↗	↑	↑		Hama	1,441	43	294	220	↑	↑	↑
	Al-Hasakeh	15,017	1	37	167	↑	↑	↑		Al-Hasakeh	1,460	55	211	231	↑	↑	↑
	Homs	14,657	3	59	160	↗	↑	↑		Homs	1,451	45	274	227	↑	↑	↑
	Idlib	14,647	6	33	292	↗	↑	↑		Idlib	1,540	13	118	224	↗	↑	↑
	Lattakia	14,330	7	30	117	↗	↑	↑		Lattakia	1,085	45	171	163	↑	↑	↑
	Quneitra	13,933	7	9	161	↗	↗	↑		Quneitra	680	43	96	149	↑	↑	↑
	Ar-Raqqa	9,856	2	32	229	↗	↑	↑		Ar-Raqqa	1,258	46	125.8	334	↑	↑	↑
	Rural Damascus	14,026	7	32	169	↗	↑	↑		Rural Damascus	1,262	111	176	425	↑	↑	↑
	As-Sweida	12,567	3	6	143	↗	↗	↑		As-Sweida	842	31	98	281	↑	↑	↑
Tartous	14,100	10	16	135	↗	↗	↑	Tartous	1,030	21	194	175	↗	↑	↑		
White beans (kg)	Aleppo	4,277	9	118	385	↗	↑	↑	Unskilled Labor wage*	Aleppo	4,243	12	-4	32	↗	↓	↑
	Damascus	5,372	31	112	400	↑	↑	↑		Damascus	7,000	10	25	182	↗	↑	↑
	Dar'a	5,580	22	137	372	↗	↑	↑		Dar'a	4,667	14	43	100	↗	↑	↑
	Deir-ez-Zor	5,633	46	134	651	↑	↑	↑		Deir-ez-Zor	2,933	4	-22	-2	↗	↓	↓
	Hama	5,701	55	102	396	↑	↑	↑		Hama	4,585	0.1	83	129	↗	↑	↑
	Al-Hasakeh	3,587	22	63	234	↗	↑	↑		Al-Hasakeh	5,000	0	22	216	↔	↗	↑
	Homs	5,763	58	101	401	↑	↑	↑		Homs	4,473	-0.5	79	124	↓	↑	↑
	Idlib	3,383	18	129	612	↗	↑	↑		Idlib	6,223	16	26	172	↗	↑	↑
	Lattakia	5,345	15	104	428	↗	↑	↑		Lattakia	7,150	19	63	68	↗	↑	↑
	Quneitra	1,800	0	-8	167	↔	↓	↑		Quneitra	4,500	16	42	100	↗	↑	↑
	Ar-Raqqa	3,873	28	56	191	↑	↑	↑		Ar-Raqqa	4,844	4	17	82	↗	↗	↑
	Rural Damascus	5,355	32	133	348	↑	↑	↑		Rural Damascus	6,881	25	57	126	↑	↑	↑
	As-Sweida	NA	NA	NA	NA	↔	↔	↔		As-Sweida	3,083	0	23	64	↔	↗	↑
Tartous	5,475	17	131	291	↗	↑	↑	Tartous	7,450	27	75	66	↑	↑	↑		
Vegetable oil (L)	Aleppo	4,203	16	54	332	↗	↑	↑	Wheat Flour (kg)	Aleppo	1,215	8	47	236	↗	↑	↑
	Damascus	4,484	12	48	360	↗	↑	↑		Damascus	1,336	15	40	341	↗	↑	↑
	Dar'a	4,544	11	50	281	↗	↑	↑		Dar'a	1,267	-2	23	266	↓	↗	↑
	Deir-ez-Zor	4,247	24	42	304	↗	↑	↑		Deir-ez-Zor	1,340	1	49	215	↗	↑	↑
	Hama	4,672	15	56	306	↗	↑	↑		Hama	1,291	0.4	38	269	↗	↑	↑
	Al-Hasakeh	3,657	25	42	264	↑	↑	↑		Al-Hasakeh	1,317	3	8	147	↗	↗	↑
	Homs	4,676	15	55	309	↗	↑	↑		Homs	1,296	1	36	271	↗	↑	↑
	Idlib	3,533	16	69	435	↗	↑	↑		Idlib	1,058	3	31	217	↗	↑	↑
	Lattakia	4,700	14	70	284	↗	↑	↑		Lattakia	1,210	2	37	203	↗	↑	↑
	Quneitra	4,422	10	24	314	↗	↗	↑		Quneitra	1,170	8	15	199	↗	↗	↑
	Ar-Raqqa	3,431	20	42	326	↗	↑	↑		Ar-Raqqa	1,017	0.3	12	135	↗	↗	↑
	Rural Damascus	4,542	16	45	355	↗	↑	↑		Rural Damascus	1,352	21	50	305	↗	↑	↑
	As-Sweida	4,563	6	75	163	↗	↑	↑		As-Sweida	1,570	5	46	300	↗	↑	↑
Tartous	4,680	14	64	316	↗	↑	↑	Tartous	1,200	-1	43	243	↓	↑	↑		
Parsley (packet)	Aleppo	155	-10	20	61	↓	↗	↑	Pasta (spaghetti)	Aleppo	2,020	15	37	289	↗	↑	↑
	Damascus	117	31	29	166	↑	↑	↑		Damascus	1,624	6	25	211	↗	↗	↑
	Dar'a	195	-3	95	134	↓	↑	↑		Dar'a	1,649	5	45	139	↗	↑	↑
	Deir-ez-Zor	142	3	89	42	↗	↑	↑		Deir-ez-Zor	1,152	7	-26	40	↗	↓	↑
	Hama	183	1	54	83	↗	↑	↑		Hama	1,681	1	1	217	↗	↗	↑
	Al-Hasakeh	200	2	100	100	↑	↑	↑		Al-Hasakeh	1,668	4	8	131	↗	↗	↑
	Homs	186	6	59	91	↗	↑	↑		Homs	1,688	1	4	219	↗	↗	↑
	Idlib	174	-35	-24	132	↓	↓	↑		Idlib	1,362	-6	-3	311	↓	↓	↑
	Lattakia	141	-16	19	41	↓	↗	↑		Lattakia	2,600	10	46	352	↗	↑	↑
	Quneitra	150	4	77	283	↗	↑	↑		Quneitra	1,430	0.1	33	143	↗	↑	↑
	Ar-Raqqa	156	-3	62	56	↓	↓	↑		Ar-Raqqa	1,884	-3	2	195	↓	↗	↑
	Rural Damascus	117	10	26	159												