



World Food Programme

SAVING LIVES
CHANGING LIVES



WFP Turkey Country Brief January 2021

Operational Context

Turkey hosts the highest number of refugees in the world, 4 million people, of which 3.6 million are from Syria. Around 60,000 refugees reside in 7 camps located in the country's south-east, while the majority live in cities and villages throughout the country. The Government of Turkey has demonstrated leadership and generosity in providing for the needs of these people. Since June 2014, a temporary protection regime has granted Syrians access to basic services such as healthcare and education. Refugees of other countries continue to benefit from International Protection status.

WFP re-established a presence in Turkey in 2012, in response to the Syria crisis. WFP Turkey's [Interim Country Strategic Plan](#) (ICSP 2020-2021) seeks to build on WFP's partnership with the Government of Turkey and other stakeholders to contribute to refugee households' ability to meet their basic needs, ensuring no vulnerable refugee is left behind. Considering the protracted refugee presence in Turkey, the ICSP includes longer-term activities including direct engagement in resilience programming that creates opportunities for refugees and host communities alike.



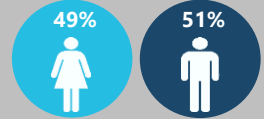
Population of Turkey:
83.2 million

2020 Human Development Index:
54 out of 189

Income Level: **Upper middle**

Poverty Rate: **28.7 percent** living below the national poverty line (TUIK)

In Numbers



53,772 people assisted
In January 2021

US\$0.8 m distributed through value vouchers

US\$0.04 m distributed through cash for training

US\$10.6 million six-month net funding requirements
(February 2021 – July 2021)

Operational Updates

- As of 31 January, 2,477,463 COVID-19 cases have been confirmed in Turkey, 25,993 deaths and 2,362,415 recoveries. The ongoing containment measures that the Government had introduced last November and that consist of weeknight curfews and full lockdowns on weekends led to a significant decrease in the number of daily infections, therefore presenting the possibility of easing the restrictions if the cases decrease to a certain limit. While the country continues to receive China's Sinovac Biotech vaccine in batches, the inoculation process began on 14 January, reaching over two million people as of 1 February. Meanwhile, WFP will move forward with its operations, making necessary adjustments to ensure compliance with COVID-19 safety measures and mitigate the risk of transmission.
- WFP supported 52,348 refugees living in six camps in the country's Southeast, through a monthly e-voucher payment that rose from TRY 100 (USD 14) to TRY 120 (USD 16) per person as of January 2021. Within the framework of the top-ups provided in 2020, the 264 Satisfaction Surveys conducted in the camps showed that beneficiaries were satisfied and grateful for both the top-ups and hygiene kits.
- Following the lockdown that was imposed in the Province of Osmaniye last November, WFP and the Directorate General for Migration Management (DGMM) discussed the activation of a contingency plan to distribute food baskets to the affected households living in the camp located in that area. WFP informed DGMM of its readiness to implement this plan in any of the six camps upon request. However, no changes have occurred as of January 2021.
- Under the cash-for-training component of the Mutfakta Umud Var (MUV)/Kitchen of Hope project, 93 participants from the second cohort are undergoing on-the-job training (OJT) that was extended for one extra month to cushion the COVID-19 impact on participants and on-the-job locations. At the same time, 258 participants in nine provinces are attending the vocational training that reverted to in-class training on 18 January, following the decision of the Ministry of National Education (MoNE) to reopen schools. To ensure safety measures are respected, participants have been divided into four groups and the number of participants in each class has been limited to ten people.

Interim Country Strategic Plan (2020-2021)

Total Requirements (in USD)	Allocated Contributions (in USD)
225 m	184 m
2021 Requirements (USD)	Six-Month Net Funding Requirements (in USD) (February 2021 – July 2021)
36 m	10.6 m

Strategic Result 8: Sharing of knowledge, expertise and technology strengthen global partnership support to country efforts to achieve the SDGs

Strategic Outcome #1: Enhance partnerships to support refugees and vulnerable populations, affected by prolonged refugee presence in Turkey to equitably access basic needs assistance and labour market opportunities.

Focus area: Resilience Building

Activities:

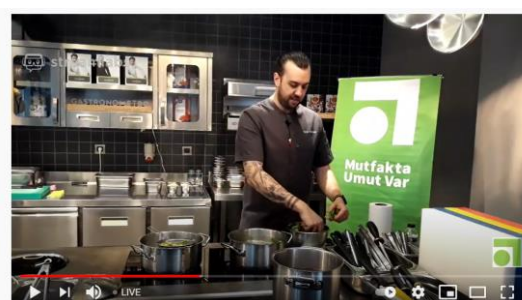
- Strengthen partnerships with national institutions and partners to improve programme implementation.
 - Provide technical support to Government and partners in assisting refugees living in Turkish communities.
 - Provide technical support to Government and partners in assisting refugees living in camps in Turkey.
 - Provide technical support to Government and partners in assisting refugees and vulnerable populations to equitably access labour market opportunities.
 - Support Turkey to exchange knowledge, experience and technology with other countries through facilitation of South-South and triangular cooperation.
 - Provide common services to partners, including UN agencies.
- 16 out of the 41 participants who weren't able to continue their OJT due to the COVID-19 restrictions that led to the closure of restaurants were transferred to new restaurants in agreement with the Turkish Employment Agency (İŞKUR). The remaining 25 participants will start on-the-job training together with the third cohort.
 - In December, the Gender-Based Violence awareness raising activity in the capital Ankara was postponed due to COVID-19 restrictions. However, in line with its commitment to the 16 days of activism, the WFP team organized the belated Orange Day event in January, on the first day of the face-to-face training.
 - In January, WFP, together with its partners, the German Agency for International Cooperation (GIZ) and the International Organization for Migration (IOM), continued to provide soup kitchen hot meals five days a week for both refugees and vulnerable Turkish nationals in seven provinces. Although the support provided to many of the eight municipalities included in the project is coming to an end, that of Adana Metropolitan Municipality resumed in mid-January 2021 to deliver hot meals to 500 Syrian refugees and 700 Turkish citizens. On a positive note, the municipality hired four Syrian participants from the first MUV cohort. Also, WFP is getting ready to send out Thank You letters to municipalities to thank them for their collaboration throughout the implementation period.
 - The innovative EMPACT (Empowerment in Action) resilience programme that kicked off on 31 October in Istanbul to increase the self-reliance of youth (18-35 years old) is ongoing. Classes given under the advanced training have been completed so far, 17 participants were hired and 2 others set up their own businesses. By the end of January, EMPACT reached 113

participants, out of which 44 are Syrians and 69 are Turkish. For the project's second pilot, WFP is intending to expand the project's reach to Adiyaman and Şanlıurfa with 50 participants in each province to reduce the shortage of qualified personnel. EMPACT is implemented jointly by WFP, Microsoft, Konrad-Adenauer-Stiftung Foundation and a local cooperating partner, 'Kodluyoruz', under the guidance of WFP Innovation Accelerator.

- WFP has been awarded the Innovation Accelerator SPRINT fund to implement the Network Fresh pilot in Istanbul for a duration of six months. Network Fresh aims to address food insecurity by making use of unsold surplus food in the food service industry. Designed as a COVID-19 adaptation of a larger WFP livelihood project, the model seeks to generate a multi-impact outcome to reduce food waste, increase access to high-quality nutritious food for vulnerable households and improve living conditions of vulnerable populations in cooperation with municipalities and a start-up called Dahataze.
- Based on consultation with various Turkish academics involved in studies about refugees and economic integration, WFP drafted a concept note (CN) to research on successful models that support refugee economic integration through skills and vocation training based on MUV and other livelihood activities. The researchers have been identified and the contractual process is ongoing.

ESSN Meta-Analysis

- WFP, in cooperation with the Oxford Poverty and Human Development Initiative (OPHI) and with the support of RBC Programme/Vulnerability Analysis and Mapping (VAM) unit, has been working on a meta-analysis for the Emergency Social Safety Net (ESSN) since July 2020. The goal is to consolidate the impact, knowledge and lessons learnt from the ESSN implementation to contribute to operational learnings benefitting WFP cash operations as well as other humanitarian actors and academia. This study is expected to be finalized by the end of February.



Donors

Ireland, Japan, Norway, the Republic of Korea, USAID/BHA, WPD AGCO Agriculture, European Civil Protection and Humanitarian Aid Operations (ECHO).