



@WFP/Hussam Al Saleh

### Highlights

o The national average price of WFP's standard reference food basket increased by eight percent between December 2020 and January 2021, reaching SYP 121,066 (USD 97 at the official exchange rate 1,250/USD).

o On the 24th of January 2021, tensions in Tafas town in western Dar'a between the government forces and non-armed states intensified. In the closest monitored market by WFP, Mzeireb, the prices of cereals increased m-o-m reaching SYP 1,433/kg for bulgur (up six percent); SYP 1,933/kg for Egyptian white rice (up eight percent); and SYP 1,225/kg for wheat flour (up four percent).

o On the 24th of January 2021, the Central Bank of Syria issued a new 5,000 Syrian pound bill for circulation and use. The previous highest note was SYP 2,000.

o The informal Syrian pound exchange rate depreciated by four percent in January 2021 compared to December 2020, reaching SYP 2,899/USD.

o In January 2021, the informal national average price of transport diesel increased by 12 percent and the informal butane gas price increased by 24 percent compared to December 2020.

o For further information, please contact:

Jan Michiels at  
Jan.Michiels@wfp.org

Pakinam Moussa at  
Pakinam.Moussa@wfp.org

### Standard Food Basket

The national average price of a standard reference food basket<sup>1</sup> increased by eight percent in January 2021 compared to December 2020 and was at SYP 121,066. The national average food basket price was 40 percent higher than that of July 2020 (six months ago) and was 222 percent higher compared to January 2020 (Figure 1).

The increase in the food basket price is attributed to different factors mainly the continued depreciation of the Syrian pound in the informal exchange rate market and the fuel shortages that are contributing to the price increase of main food-items. For example, between December 2020 and January 2021, the national average price of red split lentils and vegetable oil have both increased by ten percent.

Month-on-month (m-o-m), all 14 governorates reported an increasing average reference food basket price in January 2021. The highest m-o-m increase of 13 percent was reported in Ar-Raqqa reaching SYP 123,123, while the lowest increase of four percent was reported in Aleppo and Tartous, reaching SYP 124,600 and SYP 125,343, respectively. Idleb reported the highest average food basket price at SYP 151,048.

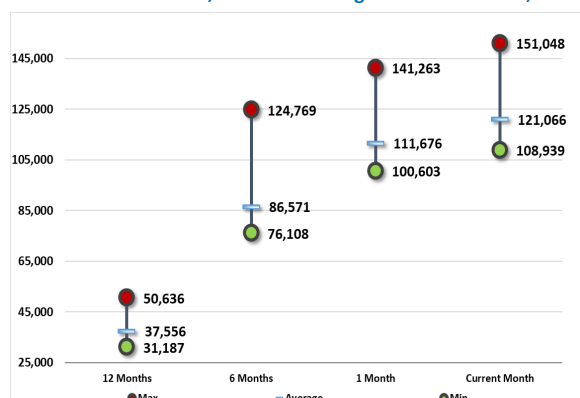
Compared to last year, the price of the reference food basket has significantly increased across all 14 governorates. Homs recorded the highest increase (up 288 percent), while Deir-ez-Zor recorded the lowest increase (up 173 percent).

The gap between the highest and lowest average food basket prices widened by four percent from SYP 40,661 in December 2020 to SYP 42,109 in January 2021 (Chart 1). Moreover, the gap increased by 117 percent since January 2020, highlighting continued supply chain disruptions across the country since last year.

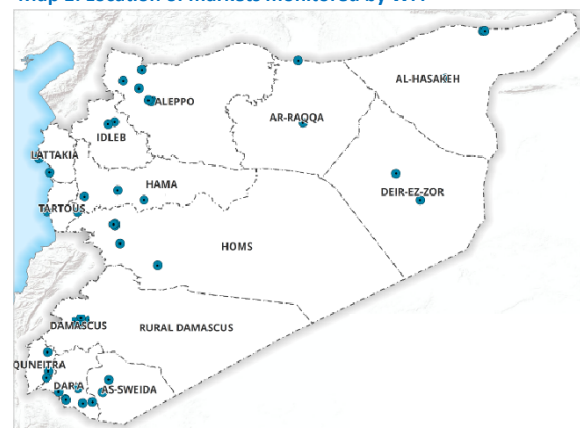
Figure 1: Food basket cost and changes, SYP

Governorate	Price January 2021	1 month change	6 months changes	12 months changes
Aleppo	SYP 124,600	4%	62%	272%
Damascus	SYP 113,984	7%	37%	229%
Dar'a	SYP 112,497	6%	33%	200%
Deir-ez-Zor	SYP 108,939	8%	43%	173%
Hama	SYP 120,559	11%	51%	222%
Al-Hasakeh	SYP 112,591	8%	33%	181%
Homs	SYP 121,089	11%	52%	288%
Idleb	SYP 151,048	7%	21%	198%
Lattakia	SYP 127,791	7%	38%	220%
Ar-Raqqa	SYP 123,123	13%	45%	223%
Rural Damascus	SYP 117,840	10%	30%	231%
As-Sweida	SYP 118,120	11%	41%	222%
Tartous	SYP 125,343	4%	44%	259%
Quneitra	SYP 117,397	12%	41%	220%
Average	SYP 121,066	8%	40%	222%

Chart 1: National min., max. and average food basket cost, SYP



Map 1: Location of markets monitored by WFP



1. The standard food basket is a group of essential food commodities. In Syria, the food basket is set at a group of dry goods providing 2,060 kcal a day for a family of five during a month. The basket includes 37 kg bread, 19 kg rice, 19 kg lentils, 5 kg of sugar, and 7 litres of vegetable oil.

# Special Focus: Tafas Town, Dar’a

## Overview

On the 24th of January 2021, tensions in Tafas town in western Dar’a between government forces and non-armed state groups worsened while on the same day, a ceasefire was able to be achieved de-escalating the worsening context. Nonetheless, this short worsening of the situation led to significant price increases.

Tafas is one of the reconciled areas in Dar’a and was under the control of non-state armed groups earlier during the conflict. The town has a population of around 45,000 people. WFP’s food distributions last reached Tafas on 17 January 2021<sup>2</sup>. However, food distributions in Tafas have been irregular in the past months, since then access has been problematic due to the heightened tensions. This example shows how susceptible local market dynamics can be to even brief escalations of hostilities, translating into immediate repercussions on the local population’s purchasing power. This is particularly concerning in areas where the regular provision of assistance is curtailed by access issues.

## Food-items prices

The closest market to Tafas town monitored by WFP is Mzeireb. In January 2021, retail prices of cereals have all increased in Mzeireb. M-o-m, prices of bulgur increased by six percent to reach SYP 1,433/kg, of Egyptian white rice increased by eight percent to reach SYP 1,933/kg, and of wheat flour increased by four percent reaching SYP 1,225/kg (chart 2). Y-o-y, cereal prices have skyrocketed by 155 percent for bulgur, 127 percent for Egyptian white rice and by 220 percent for wheat flour.

The price of meat products have also increased. M-o-m, minced beef price increased by seven percent reaching SYP 13,750/kg, a whole clean chicken price soared by 35 percent reaching SYP 5,575/kg, and the price of a carton of eggs increased by 18 percent reaching SYP 5,842/30 pieces (chart 3). Y-o-y, the price of protein products have significantly increased by 116 percent for minced beef, 323 percent for a whole cleaned chicken and by 258 percent for eggs. Other main food-items prices like sugar and vegetable oil have also increased by nine and ten percent reaching SYP 1,621/kg and SYP 4,992/litre, respectively. Y-o-y, the price of vegetable oil has increased by 286 percent and sugar has increased by 208 percent.

Comparing food-items prices in Mzeireb to the national average prices, Mzeireb prices were higher than the national average prices by ten percent for bread bakery (at SYP 120/bundle), by three percent for Egyptian white rice, by three percent for vegetable oil and by five percent for a whole cleaned chicken. Highlighting how a sudden increase in tensions can lead to supply disruptions and increases in the price of commodities.

## Fuel prices

Moreover, the price of informal diesel for transport in Mzeireb increased by three percent m-o-m reaching SYP 1,200/litre in January 2021 (chart 4). The informal diesel price in Mzeireb was six percent higher than the national average price. Even though the informal butane gas price decreased by 25 percent m-o-m reaching SYP 30,000/refill, the price in Mzeireb remained higher than the national average by 57 percent.

## ToT<sup>3</sup>

The ToT between wheat flour and wage labour in Mzeireb, a proxy indicator for purchasing power, deteriorated by five percent m-o-m, reaching 3.81 kg/daily wage in January 2021 compared to 4.01 kg/daily wage in December 2020. The ToT in Mzeireb was four percent less than the national average ToT. Additionally, the ToT for an alive two-year old male sheep and wheat flour was 294 kg/sheep (down four percent m-o-m) compared to 305 kg/sheep in December 2020. The ToT for an alive two-year old male sheep and wheat flour in Mzeireb was two percent lower than the national average ToT.

Chart 2: Main food-items prices in Mzeireb, SYP

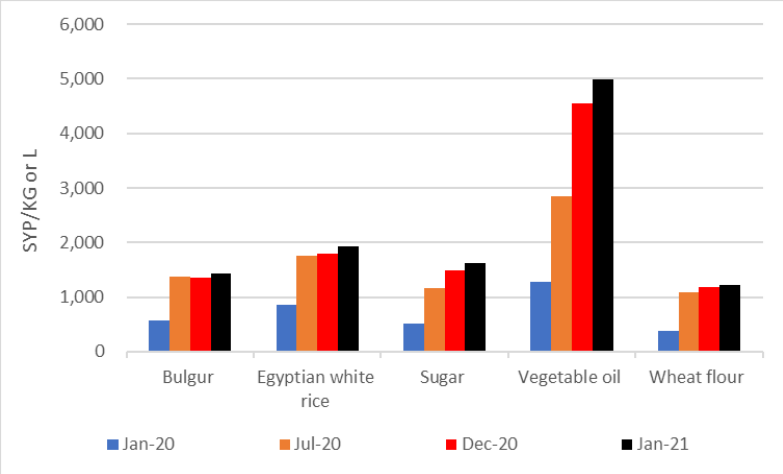


Chart 3: Meat products prices in Mzeireb, SYP

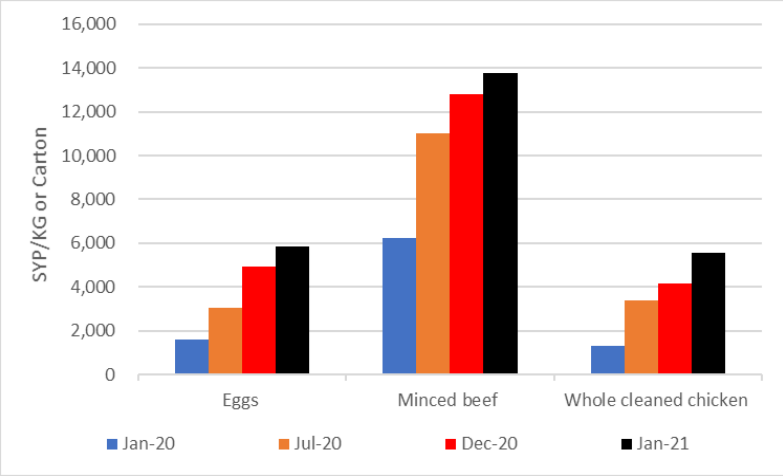
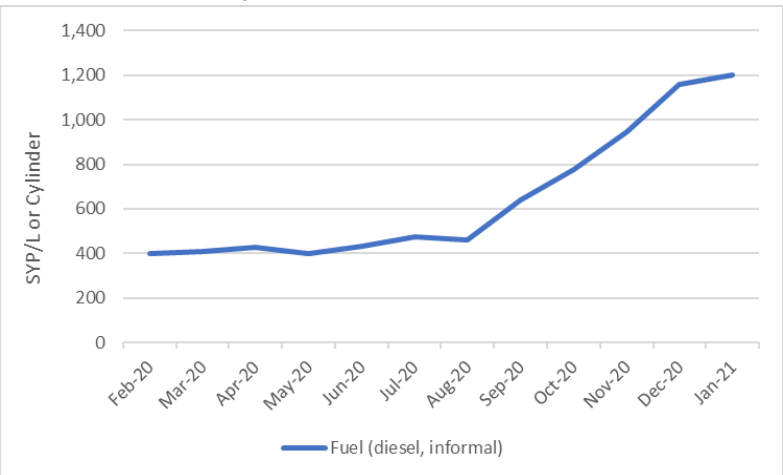


Chart 4: Informal diesel prices in Mzeireb, SYP



Source: WFP Field Offices

2. WFP Syria weekly operational update-28 January 2021.  
3. The ToT are proxy indicators of the purchasing power of households that rely on livestock and/or casual labour as their main source of income for the purchase of cereals from local markets. ToT are important components of food security analysis. Changes in the terms of trade between wages/livestock and staple food commodities are indicative of the trends in purchasing power and the impact on the food security situation of households dependent on food purchases through income from daily wage labour and/or the sale of livestock.

**Legend on regions of analysis:** 'Northwest'=Aleppo; 'Cross-border'=Idleb & Aleppo [A'zaz, Atarib & Afrin]; 'Coastal'=Lattakia & Tartous; 'Northeast'=Ar-Raqqa, Al-Hasakeh & Deir-ez-Zor; 'Middle'=Damascus, Rural Damascus, Hama & Homs; 'South'=Dar'a, As-Sweida & Quneitra.

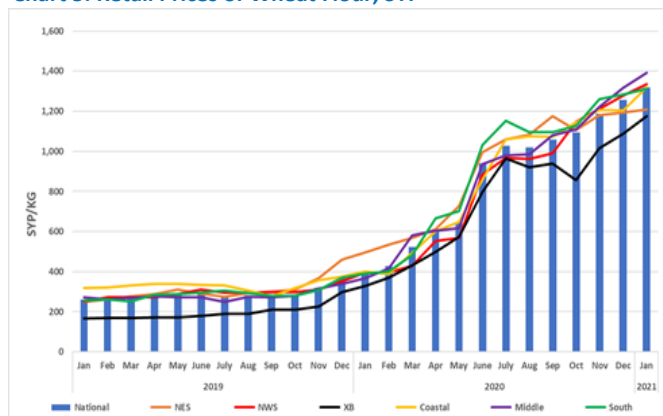
## Staple cereals retail prices

### Wheat Flour

M-o-m, the national average retail price of wheat flour throughout Syria increased in January 2021 by five percent reaching SYP 1,317/kg. The wheat flour price has also increased by 232 percent y-o-y. As-Sweida recorded the highest wheat flour price at SYP 1,600/kg (up two percent m-o-m), while Ar-Raqqa recorded the lowest price of SYP 1,017/kg (unchanged m-o-m).

Broken down by regions, the middle region of Syria reported the highest retail price at SYP 1,391/kg (up six percent m-o-m), followed by northwest Syria at SYP 1,334/kg (up four percent m-o-m), while the cross-border (XB) region continued to report the lowest retail price at SYP 1,175/kg (up eight percent m-o-m), followed by northeast Syria at SYP 1,210/kg (up one percent m-o-m) - Chart 5.

Chart 5: Retail Prices of Wheat Flour, SYP

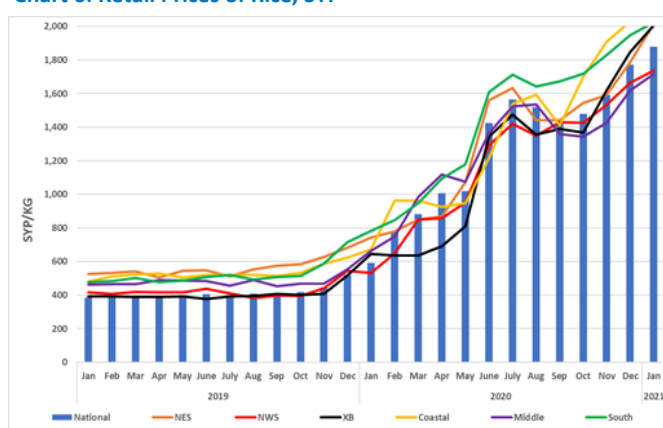


### Rice

The national average retail price of Egyptian white rice increased by six percent since December 2020 and by 217 percent since January 2021, reaching SYP 1,878/kg in January 2021. Ar-Raqqa reported the highest price at SYP 2,314/kg (up 21 percent m-o-m), while Deir-ez-Zor reported the lowest price at SYP 1,642/kg (up four percent m-o-m).

M-o-m, the coastal region reported the highest price at SYP 2,028/kg (unchanged m-o-m), followed by the southern region at SYP 2,024/kg (up four percent m-o-m), while the middle region reported the lowest price at SYP 1,716/kg (up six percent), followed by northwest Syria at SYP 1,735/kg (up four percent m-o-m) - Chart 6.

Chart 6: Retail Prices of Rice, SYP

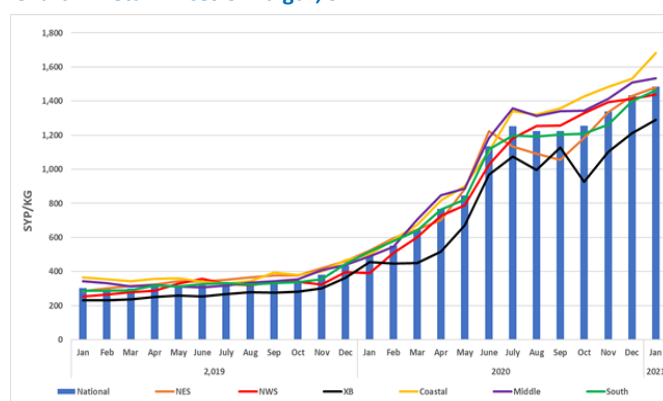


### Bulgur

In January 2021, the national average retail price of bulgur increased by four percent m-o-m and by 202 percent y-o-y reaching SYP 1,486/kg. Tartous reported the highest bulgur retail price at SYP 1,769/kg (up 17 percent m-o-m), while Idleb reported the lowest price at SYP 1,160/kg (up eight percent m-o-m).

The coastal region reported the highest average bulgur price by region at SYP 1,681/kg (up ten percent m-o-m), followed by the middle region at SYP 1,533/kg (up two percent m-o-m). On the other hand, the XB region reported the lowest average bulgur price at SYP 1,290/kg (up seven percent m-o-m), followed by northwest Syria at SYP 1,440/kg (up two percent m-o-m) - Chart 7.

Chart 7: Retail Prices of Bulgur, SYP



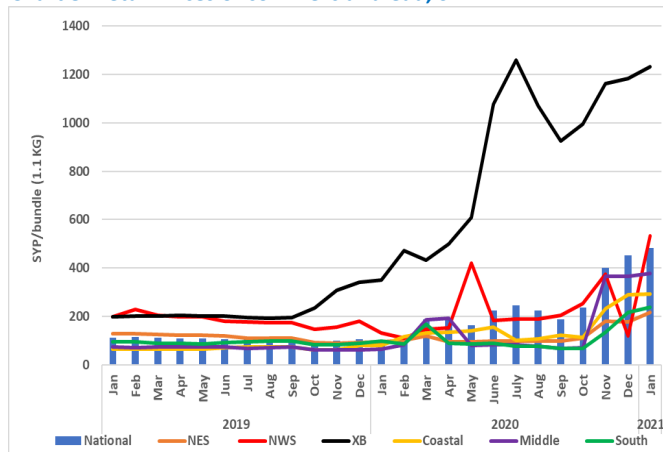
### Bread\*

The national average price of subsidized bread in January 2021 reached SYP 109/bundle (up one percent m-o-m and 139 percent y-o-y).

Moreover, commercial bread price increased by seven percent m-o-m and by 374 percent y-o-y to reach SYP 481/bundle. Idleb reported the highest commercial bread price of SYP 1,238/bundle (up five percent m-o-m), while Ar-Raqqa reported the lowest price of SYP 130/bundle (down four percent m-o-m).

Broken down by regions, the cross-border region continued to report the highest price of SYP 1,231/bundle (up four percent m-o-m), while northeast Syria reported the lowest price of SYP 218/bundle (up 22 percent m-o-m). The m-o-m price increase in northeast Syria is related to the closure of private bakeries during the last two weeks of January 2021. As a result, the demand for resold subsidized bread has increased which pushed its price up.

Chart 8: Retail Prices of commercial bread, SYP



\*WFP-monitored commercial bread includes resold public bread bundles. In Idleb and some of Aleppo cities where bread is not subsidized, the commercial bread WFP monitors only covers bread sold by retailers in shops. All bread past prices have been adjusted to reflect the new bread bundle size of 1.1 kg instead of 1.3 kg since November 2020.



## Diesel prices

In January 2021, the informal national average price of transport diesel continued to rise, increasing by 12 percent since December 2020 and by 139 percent since July 2020 (six months ago), reaching SYP 1,134/litre. Moreover, the informal price remains five times higher than the formal price (SYP 174/litre) - Chart 9.

Idleb continued to report the highest informal price at SYP 1,919/litre (up 11 percent m-o-m), followed by Aleppo at SYP 1,424/litre (up five percent m-o-m). On the other hand, Al-Hasakeh reported the lowest price at SYP 150/litre (unchanged m-o-m), followed by Ar-Raqqa at SYP 396/litre (unchanged m-o-m).

Broken down by regions, the cross-border (XB) region reported the highest price at SYP 1,811/litre (up ten percent m-o-m), while northeast Syria reported the lowest price at SYP 436/litre (up four percent m-o-m).

Moreover, the informal national average price of heating diesel continued to increase by four percent m-o-m as a result of the increased demand because of the winter season to reach SYP 1,093/litre.

Broken down by regions, the cross-border region reported the highest price at SYP 1,425/litre (up two percent m-o-m), while northeast Syria reported the lowest price at SYP 617/litre (up 23 percent m-o-m).

## Butane gas prices

The informal national average price of one butane gas cylinder (25,000 L) increased by 24 percent m-o-m and by 79 percent since July 2020 (six months ago) reaching SYP 23,659/refill in January 2021, while the formal butane gas cylinder remained unchanged at SYP 2,785/refill. Tartous reported the highest price at SYP 30,000 /refill (up seven percent m-o-m), while Al-Hasakeh reported the lowest price at SYP 10,667 (up seven percent m-o-m).

Broken down by regions, the XB region reported the highest informal refill price at SYP 28,520/refill (up 13 percent m-o-m), followed by the coastal region at SYP 28,125/refill (up eight percent m-o-m), while northeast Syria region reported the lowest price at SYP 14,393/refill (up 12 percent m-o-m), followed by the middle region at SYP 23,337/refill (up 113 percent m-o-m).

## Exchange rate

In January 2021, the Syrian pound depreciated by four percent in the informal exchange rate market and reached SYP 2,899/USD. Compared to a year ago, the Syrian pound has significantly depreciated by 65 percent. On the other hand, the operational UN rate and the official exchange rate have both remained unchanged at SYP 1,250/USD compared to December 2020. However, the official rate has lost 65 percent of its value since January 2020 and 78 percent of its value since October 2020 (start of Lebanese financial crisis).

The highest informal exchange rate was reported in Tartous at SYP 2,925/USD (depreciated by four percent m-o-m; and depreciated by 62 percent y-o-y), followed by Lattakia at SYP 2,923/USD (depreciated by four percent m-o-m; and depreciated by 63 percent y-o-y). Conversely, the lowest rates were reported in Idleb at SYP 2,866/USD (depreciated by three percent m-o-m; and depreciated by 65 percent y-o-y), and Quneitra at SYP 2,875/USD (depreciated by three percent m-o-m; and depreciated by 64 percent y-o-y).

Chart 9: Formal and informal transport diesel prices, SYP\*\*

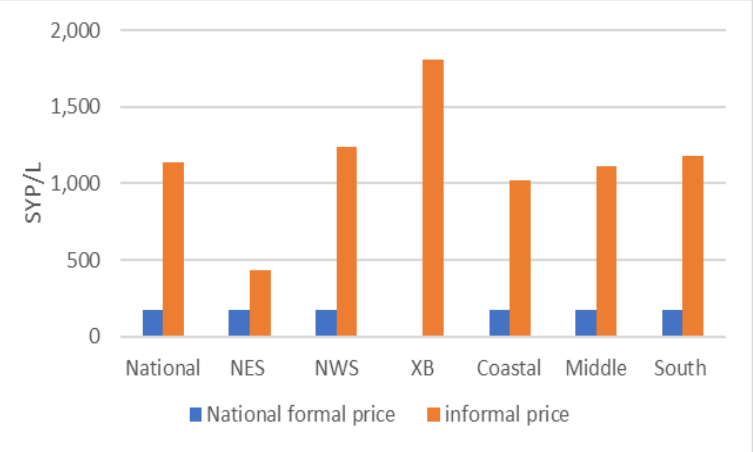
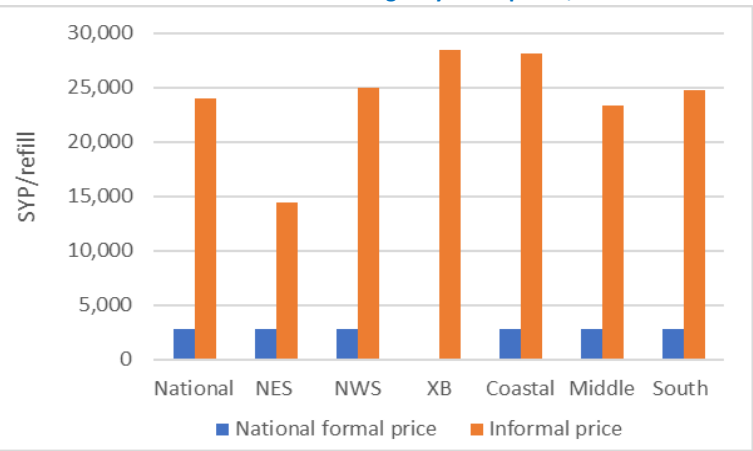


Chart 10: Formal and informal butane gas cylinder prices, SYP\*\*



Source: WFP field offices

Table 1: Informal market exchange rate, 1 USD to SYP

Governorate	January 2021	% change (m-o-m)	% change (y-o-y)
Aleppo	2,885	-3%	-67%
Al-Hasakeh	2,901	-3%	-66%
Ar-Raqqa	2,893	-3%	-66%
As-Sweida	2,889	-4%	-65%
Damascus	2,910	-4%	-64%
Dar'a	2,880	-4%	-65%
Deir-ez-Zor	2,910	-3%	-62%
Hama	2,916	-4%	-65%
Homs	2,916	-4%	-65%
Idleb	2,866	-3%	-65%
Lattakia	2,923	-4%	-63%
Quneitra	2,875	-3%	-64%
Rural Damascus	2,898	-4%	-64%
Tartous	2,925	-4%	-62%
National average	2,899	-4%	-65%
Official rate	1,250	0%	-65%

Source: WFP

\*\*No formal prices have been reported in the cross-border region because there is no subsidized diesel or butane gas in the region.

Terms of Trade (ToT)

ToT between wage labour and wheat flour

The national average non-skilled labour wage, representing construction, off-loading and agricultural labour, increased by two percent m-o-m reaching SYP 5,237/day in January 2021. Moreover, the wage rate was 96 percent above its y-o-y level and 30 percent above levels recorded in July 2020 - chart 11.

Tartous reported the highest daily wage rate at SYP 7,750/day (up four percent m-o-m), while Deir-ez-Zor reported the lowest daily wage rate at SYP 3,000/day (up two percent m-o-m). Broken down by regions, the coastal region reported the highest wage rate of SYP 7,500/day (up three percent m-o-m), followed by the XB region at SYP 6,265/day (up six percent m-o-m). On the other hand, northwest Syria reported the lowest wage rate of SYP 3,375/day (up two percent m-o-m), followed by northeast Syria at SYP 4,381/day (up one percent).

The national average ToT between wheat flour and wage labour, a proxy indicator for purchasing power, decreased by three percent between December 2020 and January 2021, reaching 4.0 kgs of wheat flour/daily wage compared to 4.1kg of wheat flour in December 2020.

The national average ToT between wheat flour and wage labour also decreased by two percent compared to July 2020 (six months ago) and by 41 percent compared to January 2021. In other words, the national average daily wage of a non-skilled labourer could buy 4.0 kgs of wheat flour in December 2020 compared to 3.9 kgs in July 2020, and 6.7 kgs in January 2020.

Broken down by regions, the coastal region reported the highest ToT at 5.7 kgs (down six percent m-o-m), followed by the XB region at 5.3 kgs (down two percent m-o-m). On the other hand, northwest Syria reported the lowest ToT at 2.5 kgs (down three percent m-o-m), followed by the southern region at 3.4 kgs (down one percent m-o-m).

ToT between sheep and wheat flour

The national average price of a two-year old alive male sheep increased by six percent m-o-m and increased by 105 percent y-o-y, reaching SYP 395,569/sheep in January 2021 (Chart 13).

Ar-Raqqa reported the highest price of a two-year old alive male sheep at SYP 459,444/head (up two percent m-o-m), while Aleppo reported the lowest price at SYP 345,946/head (up two percent m-o-m).

Broken down by regions, northeast Syria reported the highest average price across Syria at SYP 435,964/sheep (unchanged m-o-m), followed by the middle region at SYP 405,308 (up nine percent m-o-m). On the other hand, northwest Syria reported the lowest price at SYP 331,458/sheep (up four percent m-o-m), followed by the southern region at SYP 382,798/sheep (up six percent m-o-m).

In January 2021, the ToT between an alive two-year old male sheep and wheat flour was 300 kg/sheep (up one percent m-o-m). Highlighting an improvement in the exchange for livestock owners who could buy on average one percent more wheat flour compared to a month earlier. However, the ToT has worsened by 38 percent since January 2020.

Broken down by regions, northeast Syria reported the highest ToT at 360 kg/sheep (down two percent m-o-m), followed by the XB region at 330 kg/sheep (down four percent m-o-m). On the other hand, northwest Syria reported the lowest ToT at 248 kg/sheep (unchanged m-o-m), followed by the middle region at 291 kg/sheep (up three percent m-o-m).

Chart 11: Daily wage for unskilled labour, SYP

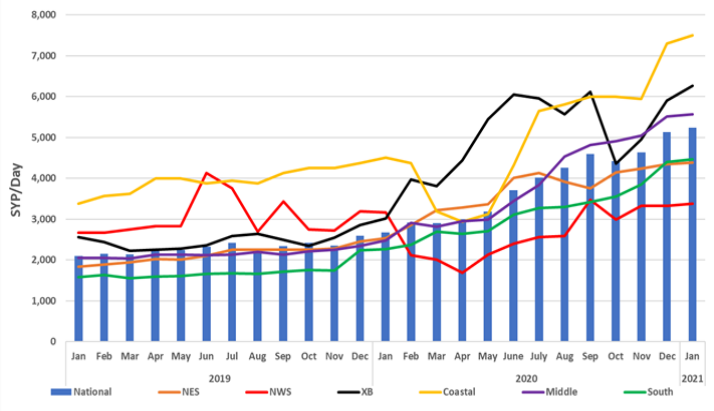


Chart 12: Terms of Trade (ToT) between wheat flour and wage rate

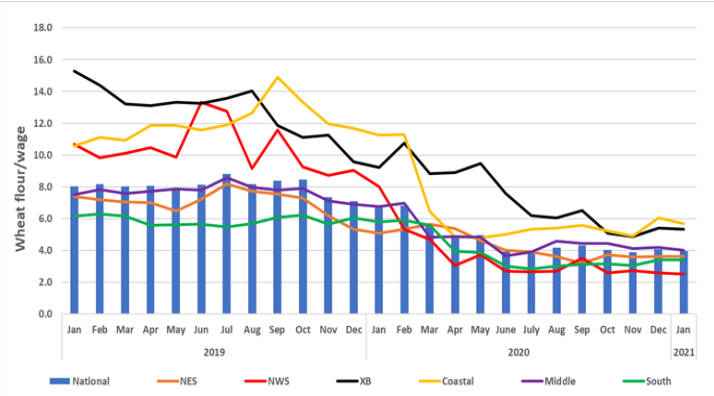


Chart 13: Price of livestock, SYP/one 2Y old sheep

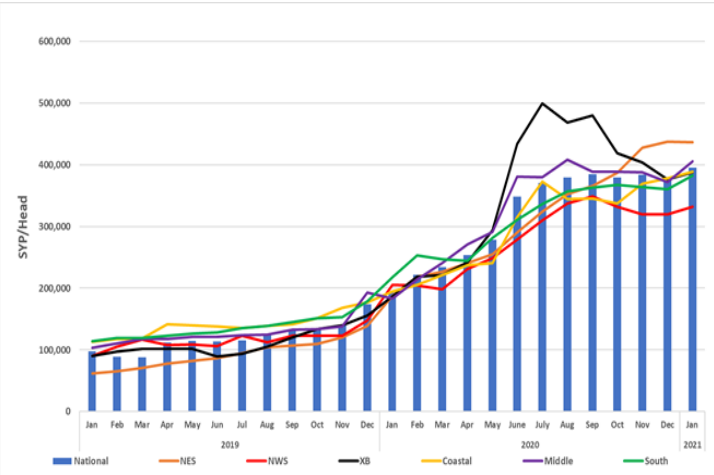
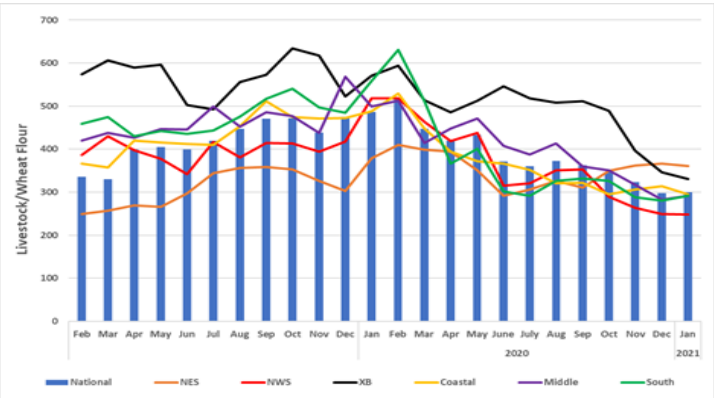


Chart 14: Terms of Trade (ToT) between wheat flour and the price of a 2 year old sheep



Source: WFP

## COVID-19 NFIs

Table 2: Prices of key COVID-19 items, week-on-week in January 2021, SYP

National average	Week 1 (SYP)	Week 2 (SYP)	Week 3 (SYP)	Week 4 (SYP)	% Change (January week 4 and 1)
Surgeon mask	346	346	347	349	1%
Gloves (pair)	351	352	354	352	1%
Alcohol spray (200 ml)	1,767	1,749	1,757	1,786	1%
Bleach bottle (L)	1,167	1,171	1,177	1,196	2%
Hand gel (50 ml)	966	964	964	973	1%
Soap bar	388	387	390	95	2%

Between December 2020 and January 2021, the price of all monitored COVID-19 items have increased except for hand gel that remained unchanged at SYP 967/50 ml and plastic gloves that decreased by one percent m-o-m reaching SYP 352/pair. The national average price of soap reached SYP 390/bar (up four percent m-o-m) and the price of bleach reached SYP 1,178/litre (up five percent m-o-m). Moreover, the price of alcohol spray reached SYP 1,765/200 ml (up three percent m-o-m) and of surgical masks reached SYP 347/mask (up two percent m-o-m).

Compared to July 2020 (six months ago), the price of surgeon masks decreased by six percent. On the other hand, the price of plastic gloves, alcohol spray, bleach, hand gel and soap bars have all increased by 29, 27, six, seven and one percent, respectively.

Additionally, compared to February 2020 (prior to the COVID-19 outbreak in Syria), the price of all items in January 2021 have increased. The price of surgeon masks, plastic gloves and alcohol spray have increased by 339, 426 and 322 percent, respectively. Also, the price of bleach, hand gel and soap bars have increased by 183, 301 and 162 percent, respectively.

## Key food-items retail prices

### Vegetable oil

M-o-m, the national average retail price of vegetable oil throughout Syria increased in January 2021 by ten percent, reaching SYP 4,830/litre. Vegetable oil's national average price has also increased by 66 percent since July 2020 (six months ago) and by 308 percent since January 2020. Lattakia recorded the highest vegetable oil price at SYP 5,300/kg (up 13 percent m-o-m), while Ar-Raqqa recorded the lowest price at SYP 3,719/kg (up eight percent m-o-m).

Broken down by regions, the coastal region reported the highest price at SYP 5,166/litre (up ten percent m-o-m), followed by the middle region at SYP 5,131/litre (up 11 percent m-o-m). Conversely, the XB region reported the lowest price of vegetable oil at SYP 3,749 (up five percent m-o-m), followed by northeast Syria at SYP 4,046 (up nine percent m-o-m).

### Eggs

In January 2021, the national average retail price of fresh eggs increased by 14 percent m-o-m reaching SYP 5,959/carton. The national average price also increased by 111 percent since July 2020 (six months ago) and by 278 percent since January 2020. Homs and Hama recorded the highest eggs price at SYP 6,361/carton (up 19 and 20 percent m-o-m, respectively), while Idleb recorded the lowest price of SYP 5,312/carton (down seven percent m-o-m).

Broken down by regions, the middle region reported the highest price of SYP 6,185/carton (up 20 percent m-o-m), followed by northeast Syria at SYP 5,960/carton (up ten percent m-o-m). Conversely, the XB region reported the lowest price at SYP 5,375/kg (down two percent m-o-m), followed by the southern region at SYP 5,870 (up 17 percent m-o-m).

Table 3: Monthly price changes of key COVID-19 items, SYP

National average	Feb 2020 (SYP)	Jan 2021 (SYP)	% Change (Jan-Feb)
Surgeon mask	79	347	339%
Gloves (pair)	67	352	426%
Alcohol spray (200 ml)	418	1,765	322%
Bleach bottle (L)	416	1,178	183%
Hand gel (50 ml)	241	967	301%
Soap bar	149	390	162%

Source: WFP

Chart 15: Retail Prices of Vegetable Oil, SYP

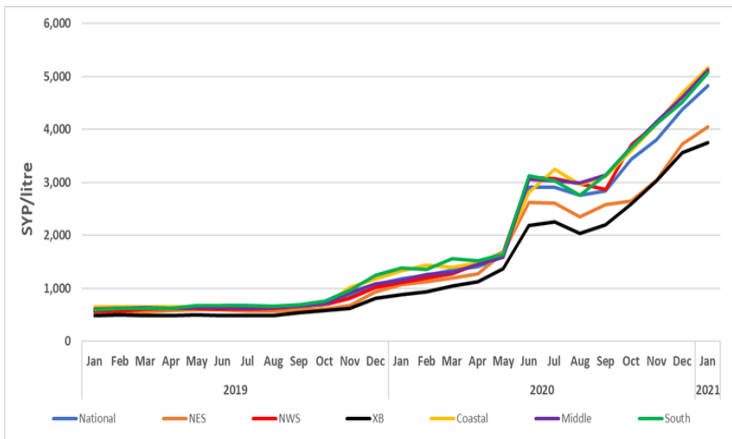
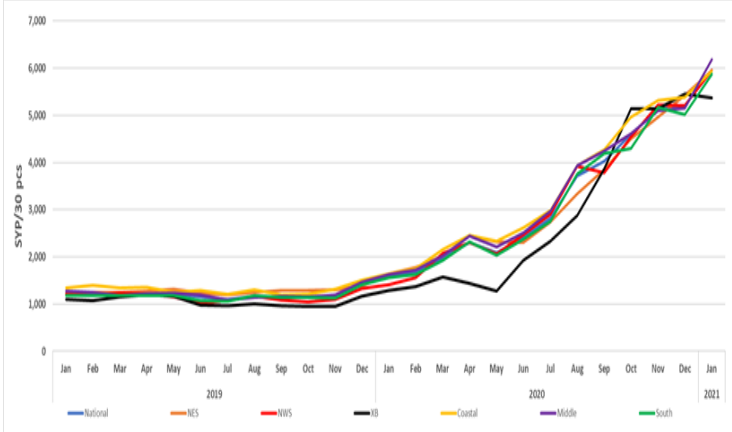


Chart 16: Retail Prices of Fresh Eggs, SYP



Source: WFP



Table 4. Market Price of Main Commodities in Syrian Pounds: January 2021																		
Commodity	Governorate	Current Price	Price change	Price change	Price change	Average Change	Average Change	Average Change	Commodity	Governorate	Current Price	Price change	Price change	Price change	Average Change	Average Change	Average Change	
			1M (%)	6 M (%)	12 M (%)	1M	6 M	12 M				1M (%)	6 M (%)	12 M (%)	1M	6 M	12 M	
Bread Public (1.1 kg)	Aleppo	120	0.4	185	185	↗	↑	↑	Dates (kg)	Aleppo	4,488	8	24	293	↗	↗	↑	
	Damascus	100	-	124	136	↔	↑	↑		Damascus	4,431	8	21	234	↗	↗	↑	
	Dar'a	126	-	134	167	↔	↑	↑		Dar'a	4,028	0.4	10	188	↗	↗	↑	
	Deir-ez-Zor	104	2	64	64	↗	↑	↑		Deir-ez-Zor	3,750	-	53	173	↔	↑	↑	
	Hama	100	-	136	136	↔	↑	↑		Hama	4,481	1	24	214	↗	↗	↑	
	Al-Hasakeh	100	-	136	136	↔	↑	↑		Al-Hasakeh	3,925	9	55	227	↗	↑	↑	
	Homs	100	-	136	136	↔	↑	↑		Homs	4,466	1	23	213	↗	↗	↑	
	Idleb	NA*	-	-	-	↔	↔	↔		Idleb	3,374	19	36	141	↗	↑	↑	
	Lattakia	103	-0.5	62	142	↓	↑	↑		Lattakia	5,669	-5	32	244	↓	↑	↑	
	Quneitra	129	5	206	206	↗	↑	↑		Quneitra	4,298	6	26	168	↗	↑	↑	
	Ar-Raqqa	108	8	47	80	↗	↑	↑		Ar-Raqqa	4,094	4	40	366	↗	↑	↑	
	Rural Damascus	100	-	104	124	↔	↑	↑		Rural Damascus	4,537	8	27	262	↗	↑	↑	
	As-Sweida	100	-	136	136	↔	↑	↑		As-Sweida	4,500	1	32	219	↗	↑	↑	
	Tartous	106	2	86	151	↗	↑	↑		Tartous	4,956	0.1	54	281	↗	↑	↑	
Bread Shop (1.1 kg)	Aleppo	1,049	14	87	449	↗	↑	↑	Diesel (parallel market, L)	Aleppo	1,424	5	47	NA	↗	↑	↔	
	Damascus	756	-0.3	665	732	↓	↔	↔		Damascus	1,200	27	194	NA	↑	↑	↔	
	Dar'a	NA	-	-	-	↔	↔	↔		Dar'a	1,181	5	177	NA	↗	↑	↔	
	Deir-ez-Zor	342	116	521	192	↑	↑	↑		Deir-ez-Zor	783	-1	181	NA	↓	↑	↔	
	Hama	150	-11	122	161	↓	↑	↑		Hama	1,000	11	150	NA	↗	↑	↔	
	Al-Hasakeh	288	15	127	170	↗	↑	↑		Al-Hasakeh	150	-	-	NA	↔	↔	↔	
	Homs	150	-12	122	179	↓	↑	↑		Homs	1,000	11	150	NA	↗	↑	↔	
	Idleb	1,238	5	-15	196	↗	↓	↑		Idleb	1,919	11	61	NA	↗	↑	↔	
	Lattakia	413	1	324	628	↗	↑	↑		Lattakia	1,038	4	177	NA	↗	↑	↔	
	Quneitra	NA	NA	NA	NA	↔	↔	↔		Quneitra	1,146	10	211	NA	↗	↑	↔	
	Ar-Raqqa	130	-4	38	83	↓	↑	↑		Ar-Raqqa	396	-	62	NA	↔	↑	↔	
	Rural Damascus	671	13	459	845	↗	↑	↑		Rural Damascus	1,304	36	238	NA	↑	↑	↔	
	As-Sweida	238	10	181	205	↗	↑	↑		As-Sweida	1,233	15	163	NA	↗	↑	↔	
	Tartous	175	4	65	97	↗	↑	↑		Tartous	1,006	1	155	NA	↗	↑	↔	
Bulgur (kg)	Aleppo	1,450	4	29	271	↗	↑	↑	US Dollar exchange rate (parallel market, \$1)	Aleppo	2,885	-3	-22	-67	↓	↓	↓	
	Damascus	1,500	2	16	208	↗	↗	↑		Damascus	2,910	-4	-22	-64	↓	↓	↓	
	Dar'a	1,442	3	20	152	↗	↗	↑		Dar'a	2,880	-4	-22	-65	↓	↓	↓	
	Deir-ez-Zor	1,500	11	77	205	↗	↑	↑		Deir-ez-Zor	2,910	-3	-20	-62	↓	↓	↓	
	Hama	1,544	1	12	193	↗	↗	↑		Hama	2,916	-4	-24	-65	↓	↓	↓	
	Al-Hasakeh	1,679	3	28	196	↗	↑	↑		Al-Hasakeh	2,901	-3	-21	-66	↓	↓	↓	
	Homs	1,551	2	13	262	↗	↗	↑		Homs	2,916	-4	-24	-65	↓	↓	↓	
	Idleb	1,160	8	6	124	↗	↗	↑		Idleb	2,866	-3	-19	-65	↓	↓	↓	
	Lattakia	1,594	3	23	190	↗	↗	↑		Lattakia	2,923	-4	-24	-63	↓	↓	↓	
	Quneitra	1,456	5	31	217	↗	↑	↑		Quneitra	2,875	-3	-23	-64	↓	↓	↓	
	Ar-Raqqa	1,332	-2	11	159	↓	↗	↑		Ar-Raqqa	2,893	-3	-21	-66	↓	↓	↓	
	Rural Damascus	1,518	1	12	184	↗	↗	↑		Rural Damascus	2,898	-4	-22	-64	↓	↓	↓	
	As-Sweida	1,567	10	16	236	↗	↗	↑		As-Sweida	2,889	-4	-22	-65	↓	↓	↓	
	Tartous	1,769	17	28	293	↗	↑	↑		Tartous	2,925	-4	-24	-62	↓	↓	↓	
Butane Cylinder (parallel market, 25 kg)	Aleppo	26,028	6	82	NA	↗	↑	↔	Eggs (carton)	Aleppo	5,745	11	117	307	↗	↑	↑	
	Damascus	17,056	10	14	NA	↗	↗	↔		Damascus	5,928	21	92	276	↗	↑	↑	
	Dar'a	27,766	-22	48	NA	↓	↑	↔		Dar'a	5,939	20	102	270	↗	↑	↑	
	Deir-ez-Zor	15,958	11	62	NA	↗	↑	↔		Deir-ez-Zor	5,813	12	87	247	↗	↑	↑	
	Hama	27,500	254	172	NA	↑	↑	↔		Hama	6,361	20	119	273	↗	↑	↑	
	Al-Hasakeh	10,667	7	96	NA	↗	↑	↔		Al-Hasakeh	6,167	11	127	268	↗	↑	↑	
	Homs	27,500	254	173	NA	↑	↑	↔		Homs	6,361	19	120	290	↗	↑	↑	
	Idleb	29,340	12	66	NA	↗	↑	↔		Idleb	5,312	-7	130	354	↓	↑	↑	
	Lattakia	26,250	9	209	NA	↗	↑	↔		Lattakia	6,025	10	89	271	↗	↑	↑	
	Quneitra	19,125	-10	0.1	NA	↓	↗	↔		Quneitra	5,634	12	139	276	↗	↑	↑	
	Ar-Raqqa	15,833	14	107	NA	↗	↑	↔		Ar-Raqqa	5,919	8	135	274	↗	↑	↑	
	Rural Damascus	17,702	15	16	NA	↗	↗	↔		Rural Damascus	5,945	21	93	270	↗	↑	↑	
	As-Sweida	24,000	28	35	NA	↑	↑	↔		As-Sweida	6,065	15	102	300	↗	↑	↑	
	Tartous	30,000	7	178	NA	↗	↑	↔		Tartous	5,850	11	111	255	↗	↑	↑	
Cheese (kg)	Aleppo	5,480	4	65	193	↗	↑	↑	Eggplant (kg)	Aleppo	1,224	8	264	213	↗	↑	↑	
	Damascus	5,250	10	90	253	↗	↑	↑		Damascus	1,044	106	110	276	↑	↑	↑	
	Dar'a	4,825	2	55	225	↗	↑	↑		Dar'a	1,050	44	312	197	↑	↑	↑	
	Deir-ez-Zor	4,921	-1	63	217	↓	↑	↑		Deir-ez-Zor	1,113	19	370	178	↗	↑	↑	
	Hama	5,171	2	57	218	↗	↑	↑		Hama	1,188	30	335	259	↑	↑	↑	
	Al-Hasakeh	5,217	17	98	175	↗	↑	↑		Al-Hasakeh	1,108	37	185	158	↑	↑	↑	
	Homs	5,154	2	59	217	↗	↑	↑		Homs	1,180	31	330	286	↑	↑	↑	
	Idleb	5,868	5	87	289	↗	↑	↑		Idleb	1,604	11	128	238	↗	↑	↑	
	Lattakia	6,875	-0.1	48	193	↓	↑	↑		Lattakia	1,225	15	498	88	↗	↑	↑	
	Quneitra	4,783	4	39	268	↗	↑	↑		Quneitra	995	64	275	178	↑	↑	↑	
	Ar-Raqqa	6,006	9	97	154	↗	↑	↑		Ar-Raqqa	1,118	44	108	137	↑	↑	↑	
	Rural Damascus	5,148	9	110	269	↗	↑	↑		Rural Damascus	1,045	94	94	361	↑	↑	↑	
	As-Sweida	4,867	-	42	207	↔	↑	↑		As-Sweida	1,108	104	393	189	↑	↑	↑	
	Tartous	5,313	5	28	213	↗	↑	↑		Tartous	1,119	22	307	307	↗	↑	↑	
Chickpeas (kg)	Aleppo	1,877	14	81	204	↗	↑	↑	Fish (tuna, canned) - 160 gm	Aleppo	1,580	4	35	185	↗	↑	↑	
	Damascus	1,611	2	16	129	↗	↗	↑		Damascus	2,053	5	9	236	↗	↗	↑	
	Dar'a	1,417	-0.02	10	237	↓	↗	↑		Dar'a	1,850	2	7	171	↗	↗	↑	
	Deir-ez-Zor	1,492	15	43	116	↗	↑	↑		Deir-ez-Zor	1,867	13	46	124	↗	↑	↑	
	Hama	2,049	5	55	226	↗	↑	↑		Hama	2,535	1	37	281	↗	↑	↑	
	Al-Hasakeh	1,783	-	1	159	↔	↗	↑		Al-Hasakeh	2,133	6	4	220	↗	↗	↑	
	Homs	2,024	4	53	306	↗	↑	↑		Homs	2,526	0.5	37	286	↗	↑	↑	
	Idleb	1,641	-1	62	110	↓	↑	↑		Idleb	1,850	8	75	196	↗	↑	↑	
	Lattakia	1,906	19	34	247	↗	↑	↑		Lattakia	2,200	13	19	203	↗	↗	↑	
	Quneitra	1,388	7	24	270	↗	↑	↑		Quneitra	1,842	8	13	207	↗	↗	↑	
	Ar-Raqqa	1,700	6	18	172	↗	↗	↑		Ar-Raqqa	1,900	2	14	198	↗	↗	↑	
	Rural Damascus	1,649	-2	22	189	↓	↗	↑		Rural Damascus	2,117	10	8	220	↗	↗	↑	
	As-Sweida	1,767	1	16	216	↗	↗	↑		As-Sweida								



Commodity	Governorate	Current Price	Price change 1M (%)	Price change 6 M (%)	Price change 12 M (%)	Average Change 1M	Average Change 6 M	Average Change 12 M	Commodity	Governorate	Current Price	Price change 1M (%)	Price change 6 M (%)	Price change 12 M (%)	Average Change 1M	Average Change 6 M	Average Change 12 M
Iodised salt (kg)	Aleppo	565	1	9	202	↗	↗	↑	Sheep 2Y old Male (head)	Aleppo	345,946	2	-12	74	↗	↓	↑
	Damascus	335	-0.2	91	157	↓	↑	↑		Damascus	415,333	20	-14	130	↗	↓	↑
	Dar'a	339	0.5	2	144	↗	↗	↑		Dar'a	368,781	7	13	39	↗	↗	↑
	Deir-ez-Zor	300	10	105	200	↗	↑	↑		Deir-ez-Zor	386,708	-4	10	97	↓	↗	↑
	Hama	756	0.5	1	421	↗	↗	↑		Hama	397,401	3	28	105	↗	↑	↑
	Al-Hasakeh	400	0	9	300	↔	↗	↑		Al-Hasakeh	450,000	0	42	137	↔	↑	↑
	Homs	744	-0.9	-1	666	↓	↓	↑		Homs	397,986	2	28	127	↗	↑	↑
	Idleb	485	9	125	263	↗	↑	↑		Idleb	405,172	5	-17	119	↗	↓	↑
	Lattakia	525	15	282	40	↗	↑	↑		Lattakia	388,250	2	-6	89	↗	↓	↑
	Quneitra	388	15	27	186	↗	↑	↑		Quneitra	373,063	4	4	114	↗	↗	↑
	Ar-Raqqa	383	0	18	283	↔	↗	↑		Ar-Raqqa	459,444	2	49	154	↗	↑	↑
	Rural Damascus	404	-5	228	194	↓	↑	↑		Rural Damascus	416,071	19	-12	126	↗	↓	↑
	As-Sweida	358	0	8	132	↔	↗	↑		As-Sweida	458,333	8	46	236	↗	↑	↑
	Tartous	669	49	346	78	↑	↑	↑		Tartous	388,500	4	17	110	↗	↗	↑
	Red split lentils (kg)	Aleppo	2,224	0.4	67	362	↗	↑		↑	Sugar (kg)	Aleppo	1,658	6	31	227	↗
Damascus		1,810	9	28	234	↗	↑	↑	Damascus	1,606		10	31	178	↗	↑	↑
Dar'a		1,317	-0.03	-1	216	↓	↓	↑	Dar'a	1,586		7	37	180	↗	↑	↑
Deir-ez-Zor		1,800	16	79	157	↗	↑	↑	Deir-ez-Zor	1,642		3	4	183	↗	↗	↑
Hama		2,126	11	60	301	↗	↑	↑	Hama	1,624		14	53	223	↗	↑	↑
Al-Hasakeh		1,867	10	28	211	↗	↑	↑	Al-Hasakeh	1,727		2	13	167	↗	↗	↑
Homs		2,153	12	64	363	↗	↑	↑	Homs	1,625		15	52	237	↗	↑	↑
Idleb		2,217	10	46	209	↗	↑	↑	Idleb	1,898		3	40	160	↗	↑	↑
Lattakia		2,113	8	50	238	↗	↑	↑	Lattakia	1,631		6	20	197	↗	↗	↑
Quneitra		1,700	33	49	272	↑	↑	↑	Quneitra	1,579		9	36	172	↗	↑	↑
Ar-Raqqa		2,156	11	52	209	↗	↑	↑	Ar-Raqqa	1,707		1	16	190	↗	↗	↑
Rural Damascus		1,989	17	56	294	↗	↑	↑	Rural Damascus	1,673		14	12	225	↗	↗	↑
As-Sweida		1,875	10	36	304	↗	↑	↑	As-Sweida	1,677		9	41	212	↗	↑	↑
Tartous		2,131	8	31	255	↗	↑	↑	Tartous	1,588		3	14	253	↗	↗	↑
Meat (beef, kg)		Aleppo	14,563	0.2	25	179	↗	↑	↑	Tomato (kg)		Aleppo	1,080	-14	317	121	↓
	Damascus	16,361	17	14	210	↗	↗	↑	Damascus		917	-27	117	112	↓	↑	↑
	Dar'a	14,052	14	26	126	↗	↑	↑	Dar'a		988	-14	283	76	↓	↑	↑
	Deir-ez-Zor	12,708	-1	19	85	↓	↗	↑	Deir-ez-Zor		1,042	-3	254	160	↓	↑	↑
	Hama	15,357	5	43	160	↗	↑	↑	Hama		1,376	-5	403	150	↓	↑	↑
	Al-Hasakeh	15,250	2	24	142	↗	↗	↑	Al-Hasakeh		1,283	-12	339	133	↓	↑	↑
	Homs	15,386	5	44	139	↗	↑	↑	Homs		1,377	-5	390	184	↓	↑	↑
	Idleb	14,868	2	22	218	↗	↗	↑	Idleb		1,047	-32	181	103	↓	↑	↑
	Lattakia	16,000	12	47	113	↗	↑	↑	Lattakia		1,150	6	174	130	↗	↑	↑
	Quneitra	14,000	0.5	1	147	↗	↗	↑	Quneitra		939	38	260	116	↑	↑	↑
	Ar-Raqqa	10,672	8	32	178	↗	↑	↑	Ar-Raqqa		1,378	10	214	216	↗	↑	↑
	Rural Damascus	16,326	16	32	185	↗	↑	↑	Rural Damascus		948	-25	163	166	↓	↑	↑
	As-Sweida	13,833	10	16	127	↗	↗	↑	As-Sweida		1,088	29	308	122	↑	↑	↑
	Tartous	15,206	8	31	117	↗	↑	↑	Tartous		1,350	31	315	200	↑	↑	↑
	White beans (kg)	Aleppo	4,533	6	80	362	↗	↑	↑		Unskilled Labor wage*	Aleppo	4,376	3	-1	27	↗
Damascus		5,558	3	51	328	↗	↑	↑	Damascus	7,167		2	17	184	↗	↗	↑
Dar'a		5,756	3	95	290	↗	↑	↑	Dar'a	4,667		0	33	100	↔	↑	↑
Deir-ez-Zor		5,725	2	169	463	↗	↑	↑	Deir-ez-Zor	3,000		2	-11	-8	↗	↓	↓
Hama		6,684	17	200	383	↗	↑	↑	Hama	4,476		-2.4	56	103	↓	↑	↑
Al-Hasakeh		3,796	6	67	217	↗	↑	↑	Al-Hasakeh	5,000		0	6	213	↔	↗	↑
Homs		6,702	16	201	528	↗	↑	↑	Homs	4,461		-0.3	56	106	↓	↑	↑
Idleb		3,795	12	115	455	↗	↑	↑	Idleb	6,681		7	28	208	↗	↑	↑
Lattakia		5,644	6	50	352	↗	↑	↑	Lattakia	7,250		1	25	61	↗	↑	↑
Quneitra		1,975	10	8	169	↗	↗	↑	Quneitra	4,500		0	36	100	↔	↑	↑
Ar-Raqqa		4,408	14	79	211	↗	↑	↑	Ar-Raqqa	4,889		1	16	83	↗	↗	↑
Rural Damascus		5,552	4	114	332	↗	↑	↑	Rural Damascus	7,095		3	48	129	↗	↑	↑
As-Sweida		NA	NA	NA	NA	↔	↔	↔	As-Sweida	3,583		16	43	75	↗	↑	↑
Tartous		5,938	8	127	283	↗	↑	↑	Tartous	7,750		4	41	72	↗	↑	↑
Vegetable oil (L)		Aleppo	4,503	7	65	329	↗	↑	↑	Wheat Flour (kg)		Aleppo	1,276	5	31	231	↗
	Damascus	5,017	12	62	379	↗	↑	↑	Damascus		1,369	3	19	257	↗	↗	↑
	Dar'a	5,109	12	75	302	↗	↑	↑	Dar'a		1,288	2	10	262	↗	↗	↑
	Deir-ez-Zor	4,548	7	52	287	↗	↑	↑	Deir-ez-Zor		1,392	4	35	209	↗	↑	↑
	Hama	5,195	11	81	316	↗	↑	↑	Hama		1,408	9	45	263	↗	↑	↑
	Al-Hasakeh	4,033	10	62	259	↗	↑	↑	Al-Hasakeh		1,317	0	2	129	↔	↗	↑
	Homs	5,196	11	79	343	↗	↑	↑	Homs		1,410	9	46	296	↗	↑	↑
	Idleb	3,781	7	73	368	↗	↑	↑	Idleb		1,158	9	25	157	↗	↗	↑
	Lattakia	5,300	13	57	242	↗	↑	↑	Lattakia		1,350	12	27	238	↗	↑	↑
	Quneitra	4,927	11	54	275	↗	↑	↑	Quneitra		1,215	4	6	184	↗	↗	↑
	Ar-Raqqa	3,719	8	53	285	↗	↑	↑	Ar-Raqqa		1,017	0	10	114	↔	↗	↑
	Rural Damascus	5,051	11	54	356	↗	↑	↑	Rural Damascus		1,362	1	47	282	↗	↑	↑
	As-Sweida	5,221	14	75	180	↗	↑	↑	As-Sweida		1,600	2	46	289	↗	↑	↑
	Tartous	5,031	8	61	357	↗	↑	↑	Tartous		1,288	7	21	222	↗	↗	↑
	Parsley (packet)	Aleppo	159	3	39	232	↗	↑	↑		Pasta (spaghetti)	Aleppo	2,190	8	49	352	↗
Damascus		142	21	59	207	↗	↑	↑	Damascus	1,681		3	17	215	↗	↗	↑
Dar'a		173	-11	73	73	↓	↑	↑	Dar'a	1,694		3	27	135	↗	↑	↑
Deir-ez-Zor		192	35	195	119	↑	↑	↑	Deir-ez-Zor	1,171		2	22	67	↗	↗	↑
Hama		178	-3	28	227	↓	↑	↑	Hama	1,830		9	-21	170	↗	↓	↑
Al-Hasakeh		200	0	100	100	↔	↑	↑	Al-Hasakeh	1,754		5	17	129	↗	↗	↑
Homs		173	-7	30	93	↓	↑	↑	Homs	1,842		9	-22	267	↗	↓	↑
Idleb		195	12	-11	123	↗	↓	↑	Idleb	1,602		18	38	358	↗	↑	↑
Lattakia		159	13	52	59	↗	↑	↑	Lattakia	2,600		0	97	333	↔	↑	↑
Quneitra		150	0	67	241	↔	↑	↑	Quneitra	1,475		3	29	127	↗	↑	↑
Ar-Raqqa		149	-4	58	49	↓											