

CAMBODIA

Market Update

March 2021

Focus: Effect of the COVID-19 outbreak on food prices

United Nations World Food Programme in partnership with
Agricultural Marketing Office of the Ministry of Agriculture, Forestry and Fisheries



Preface

The COVID-19 pandemic has been rapidly evolving since the beginning of 2020. On 11 March 2020, the World Health Organization (WHO) categorized it as a global pandemic. There have been more than 127 million confirmed cases and more than 2.7 million deaths worldwide (WHO, 31 March 2021). In Cambodia, since the first reported case on 27 January 2020, there have been a total of 2,477 confirmed cases, of which 1,949 cases were linked to the recent (20 February 2021) community transmission, and 14 deaths nationwide (MOH, 1 April 2021).

The COVID-19 pandemic has had a major impact on the global economy. Trade and travel have been severely restricted and many countries, including Cambodia and others across Asia, have instituted measures to contain the spread.

In order to understand if the COVID-19 pandemic has impacted food availability and access at markets in Cambodia, the World Food Programme (WFP) monitors the retail and wholesale prices of key food commodities (see Annex 1 and 2) in 45 urban and rural markets across the country (see Methods section for more details). An average of 340 traders and market chiefs are interviewed every two weeks using a call center contracted by WFP. In addition to prices, market chiefs are also interviewed to assess market functionality, including supply and demand issues. Additional information is used to interpret the results and understand the broader context.

This update is based on market data collected in the first and third weeks of March 2021.

This system is based on long-term cooperation between WFP and the Agricultural Marketing Office (AMO) of the Ministry of Agriculture, Forestry and Fisheries (MAFF).

Content

1. Key findings	3
2. Results	
Market functionality	4
National: Price trends of mixed rice, duck egg, and morning glory	5
National: Price trends of snakehead fish, pork, and vegetable oil	6
Sub-national: Price differences and changes in urban and rural areas	7
Sub-national: Price variation for mixed rice and duck eggs	8
Sub-national: Price variation for snakehead fish and vegetable oil	9
3. Context	
Trade and local production	10
Policy response	11
4. Methods and market locations	12
5. Annex 1	
Changes in retail prices	13
6. Annex 2	
Changes in wholesale prices	14
7. Annex 3	
Rainfall anomaly, seasonal calendar, population distribution and paddy cultivation areas	15

Key findings

COVID-19 & Environmental Factors Influencing Prices

The COVID-19 pandemic continues to spread and impact economic activities across the world. The World Bank has projected that economic activity in Cambodia contracted by 2% in 2020 due largely to the impacts of COVID-19. However, the gradual easing of social distancing measures and continued benefits of the Government's fiscal support is expected to drive growth of 4% in 2021.

For the global food trade, COVID-19 has impacted both supply and demand. Several Southeast Asian countries imposed border controls early in the pandemic, disrupting the flow and prices of commodities.

Through the first three months of 2021, Cambodia exported 153,600 tonnes of milled rice, representing a decrease of 33% compared to the same period last year.

Through March 2021, the amount of rainfall received nationally over the previous three months was lower than the long-term average (see Annex 3).



National Food Price Trend Analysis (January 2020 – March 2021)

Since January 2020, domestic food prices have remained stable for most key food commodities, though spikes in March and October were observed. The March spike was likely related to the increase of COVID-19 cases and subsequent border closures. Price fluctuations in October and November were likely a result of the large-scale floods.

Between December 2020 and March 2021, the national average retail prices for pork (+6.7%) and vegetable oil (+12.3%) have increased modestly. Prices of mixed rice, snakehead fish, duck egg, and morning glory have remained relatively stable over the same period. See Annex 1 and 2 for more detail.



Sub-national Monthly Food Price Change (March 2021)

In March 2021, the average retail prices for snakehead fish, pork, duck egg, and morning glory were lower in rural areas compared to urban areas; while prices for vegetable oil were higher in rural areas than in urban areas. There is no difference between rural and urban areas for prices of mixed rice.

One-month price changes for key food commodities (morning glory, mixed rice, pork, snakehead fish and duck egg) followed similar patterns across urban and rural markets, with morning glory and mixed rice prices increasing but pork, snakehead fish, and duck egg prices decreasing. Vegetable oil prices decreased in rural areas while they increased in urban areas.

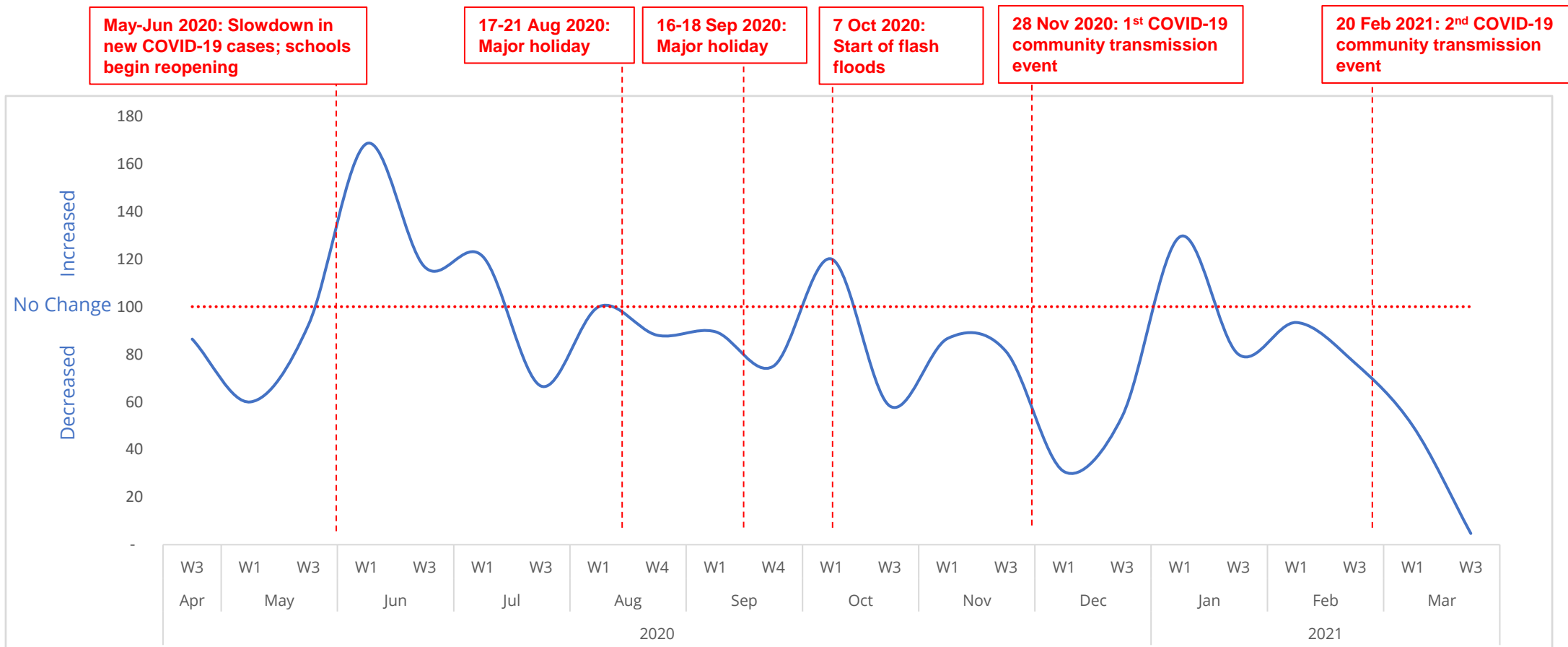
At provincial level, Banteay Meanchey, Oddar Meanchey, Preah Vihear, Stung Treng, Ratanakiri and Koh Kong had the highest reported prices for several key food commodities, such as mixed rice, snakehead fish, duck egg, and vegetable oil.

Conclusion:

In March 2021, national prices for key food commodities showed modest fluctuations but remained within expected ranges. However, even while markets remained open in March, the 20 February event resulted in a dramatic decrease in the number of customers throughout the month (see page 4). Increasing rainfall at the end of March (and early April) suggest that weather conditions are returning to normal and bode well for the main wet season planting period in May. As of 24 March 2021, about 692,000 IDPoor households (more than 2.7 million people) have received cash transfers, totaling an estimated USD 261 million since June 2020. This programme has been extended until June 2021 as part of the Government's COVID-19 economic recovery plan.

Market functionality

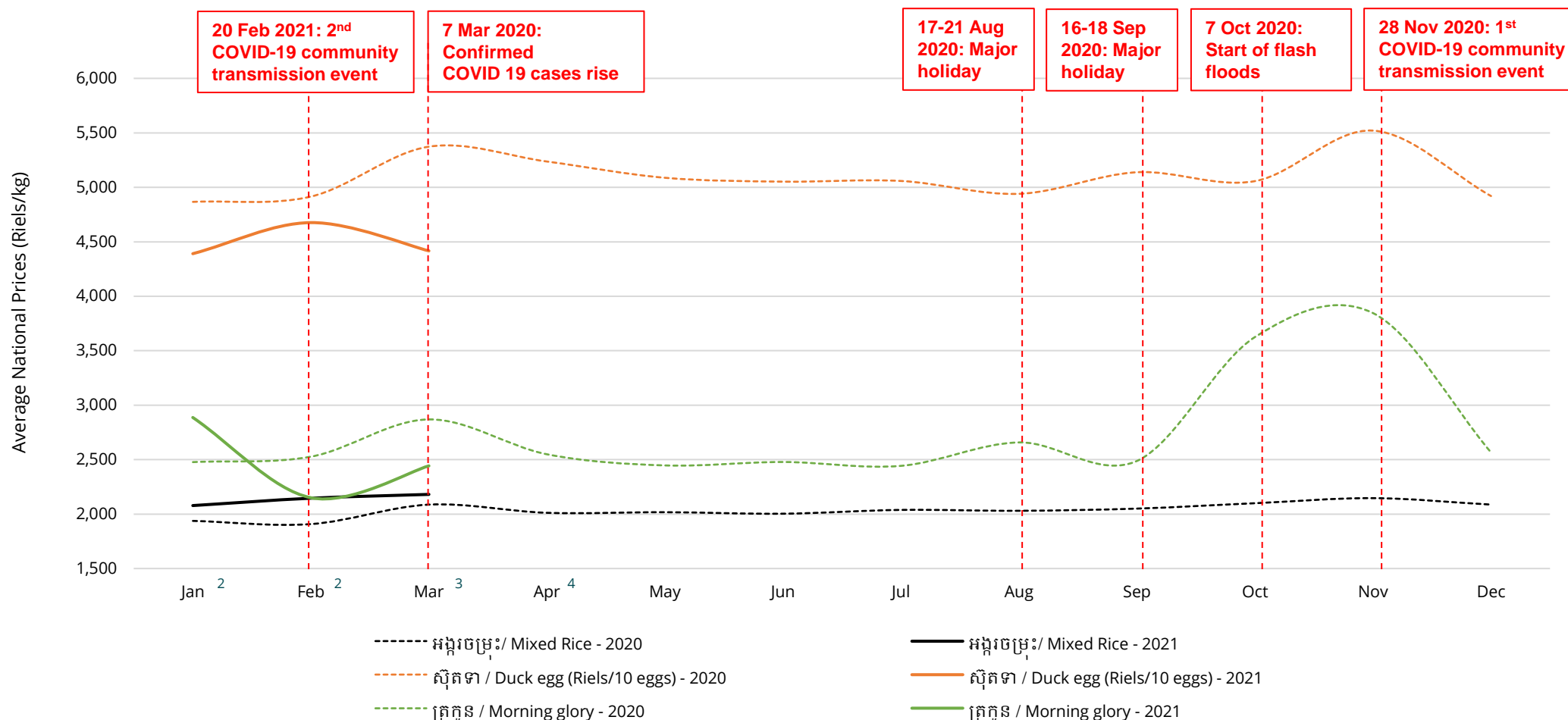
In the 45 markets monitored across the country, market chiefs were interviewed on the availability and supply of food in the market, market functionality and accessibility, and number of customers visiting in their respective markets in the first and third weeks of the month. All market chiefs reported that markets were open as usual in March 2021. However, in March, a dramatic decrease in the number of customers visiting the markets was observed due in large part to concerns stemming from the 20 February 2021 community transmission of COVID-19. In March, most market chiefs (87%) reported no issues with food supply to their markets (9% reported an increase in supply prices).



Change in Customers Visiting Markets

National: Price trends of mixed rice, duck eggs, and morning glory

Price trends for three commonly consumed food commodities (mixed rice, duck egg and morning glory¹) in 45 urban and rural markets in 23 provinces indicate that after a slight spike in March 2020, prices mostly remained stable through October 2020. The average national retail price of mixed rice was 2,180 Riels/kg: +1.6% month-on-month (MoM) and +4.4% year-on-year (YoY). The price for morning glory was 2,443 Riels/kg: +13.6% MoM and -14.9% YoY. In contrast, the average national retail price for duck eggs was 4,417 Riels/10 eggs: -5.5% MoM and -17.8% YoY. See Annex 1 and 2 for additional prices.



¹ Morning glory is commonly eaten in Cambodia and its price trend does not always indicate price fluctuations of other vegetables in the Annexes.

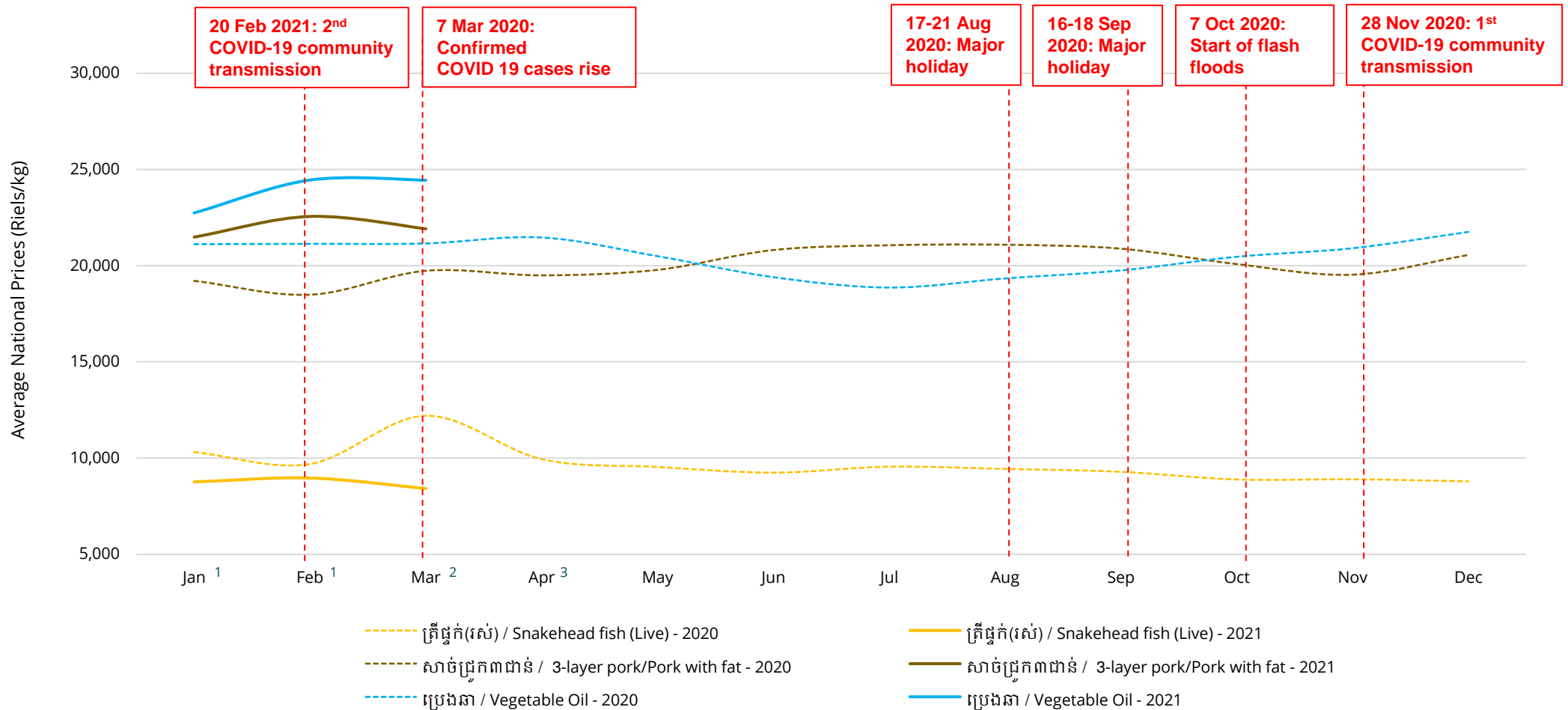
² Food prices in 2020 were remotely collected in the first week of the month in only 14 markets.

³ Food prices in 2020 were remotely collected in the first week of the month in only 14 markets and face-to-face collected by AMO in the third week of the month in 31 additional markets.

⁴ Food prices in 2020 were remotely collected in the first week of the month in only 14 markets and in the third week of the month in 45 markets.

National: Price trends of snakehead fish, pork, and vegetable oil

Price trends of another three commonly consumed food commodities (snakehead fish, pork and vegetable oil) in 45 urban and rural markets in 23 provinces showed slight fluctuation throughout last year. In March 2021, national average retail price for snakehead fish was 8,419 Riels/kg: -6.1% month-on-month (MoM) and -31% year-on-year (YoY). National average retail price for pork was 21,919 Riels/kg: -2.8% MoM and +11.1% YoY. National average retail price for vegetable oil (24,439 Riels/5 litres) remained unchanged MoM and increased +15.5% YoY. See Annex 1 and 2 for additional prices.



¹ Food prices in 2020 were remotely collected in the first week of the month in only 14 markets.

² Food prices in 2020 were remotely collected in the first week of the month in only 14 markets and face-to-face collected by AMO in the third week of the month in 31 additional markets.

³ Food prices in 2020 were remotely collected in the first week of the month in only 14 markets and in the third week of the month in 45 markets.

Sub-national: Price differences and changes in urban and rural areas

In March 2021, the average retail prices for snakehead fish, pork, duck egg, and morning glory in rural areas were lower than in urban areas, the average retail prices of vegetable oil in rural areas were slightly higher than urban areas, and the average retail prices of mixed rice were the same in rural and urban areas (Table 1). Between February and March 2021, the average retail price for morning glory, mixed rice, pork, snakehead fish and duck egg in rural and urban areas followed the same direction of change, with prices of morning glory and mixed rice increasing but prices of pork, snakehead fish, and duck egg decreasing. Prices of morning glory and mixed rice increased by 9.3% and 2% MoM respectively in rural areas and 16.9% and 1.3% MoM respectively in urban areas. In contrast, prices of pork, snakehead fish, and duck egg declined by 2.9%, 5.6% and 5.8% MoM respectively in rural areas and 2.6%, 5.3% and 12% MoM respectively in urban areas.

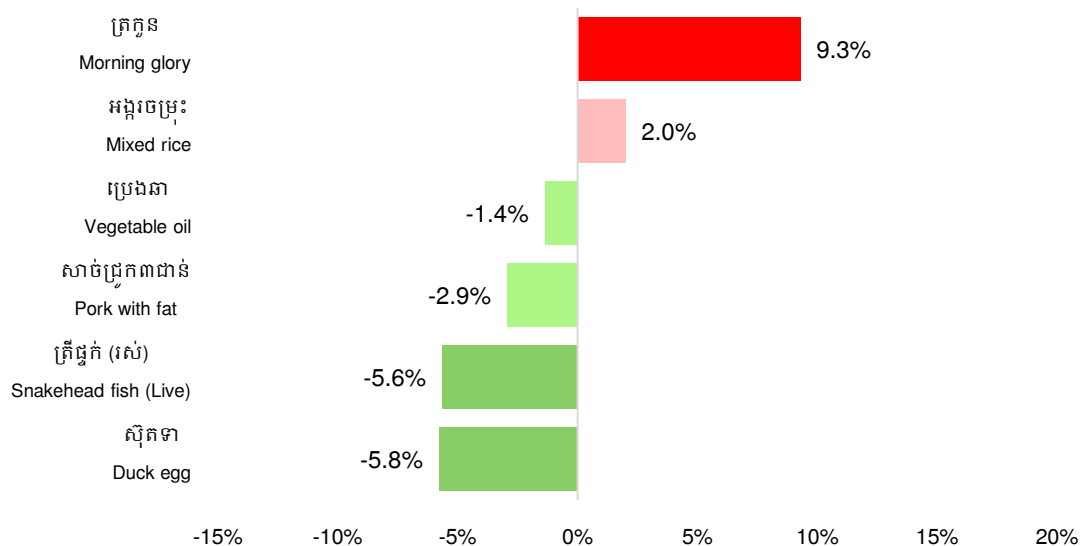
Table 1: Retail prices (riels) in rural and urban areas

	Urban	Rural
Mixed rice (kg)	2,180	2,180
Snakehead fish (Live) (kg)	8,108	8,042
Pork with fat (kg)	22,172	21,667
Duck egg (10 eggs)	4,443	4,388
Vegetable oil (5 liters)	24,389	24,495
Morning glory (kg)	2,484	2,392

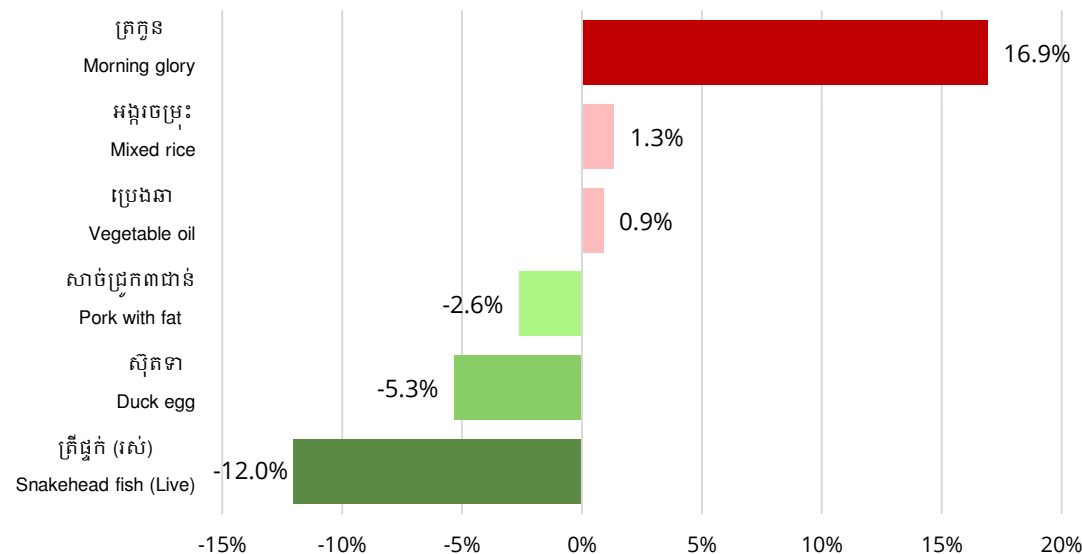
Monthly change (%) in retail prices of key food commodities

February 2021 vs March 2021

ជនបទ / Rural



ទីប្រជុំជន / Urban



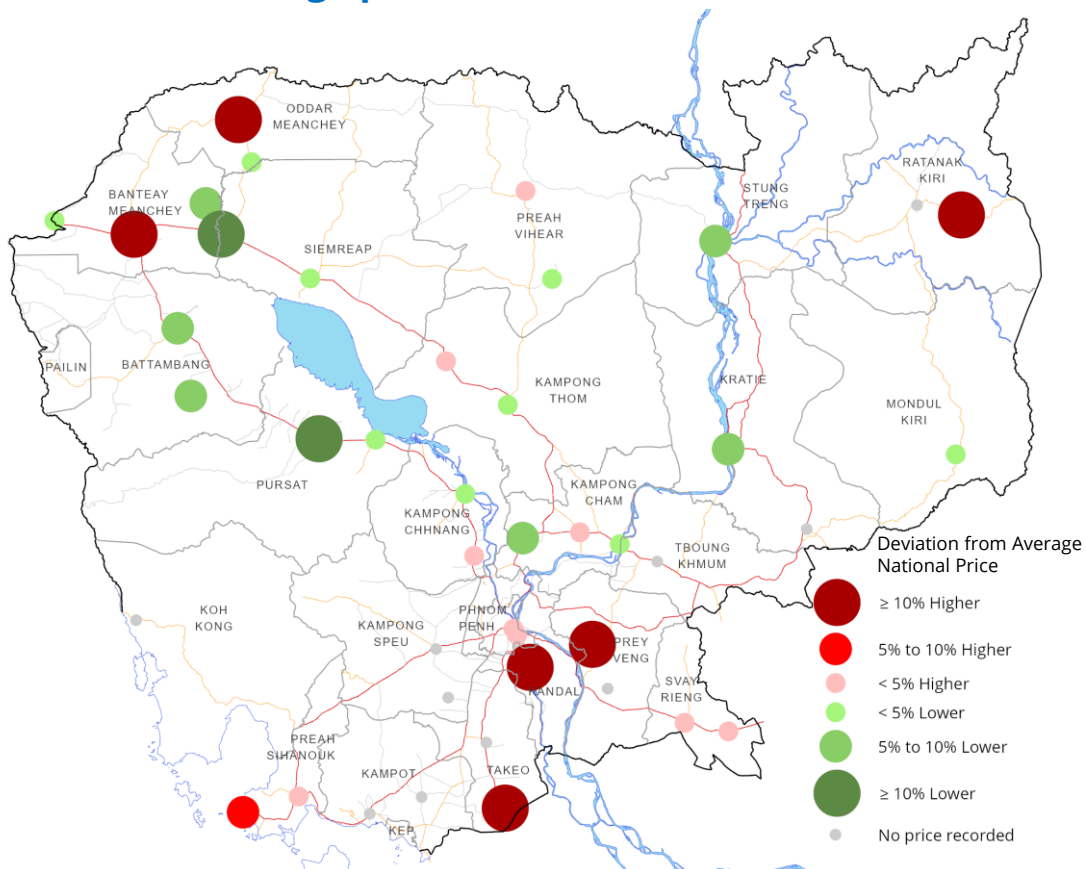
NB: Data is from all 45 markets. See the Methods section for more details.

Sub-national: Price variation for mixed rice and duck eggs

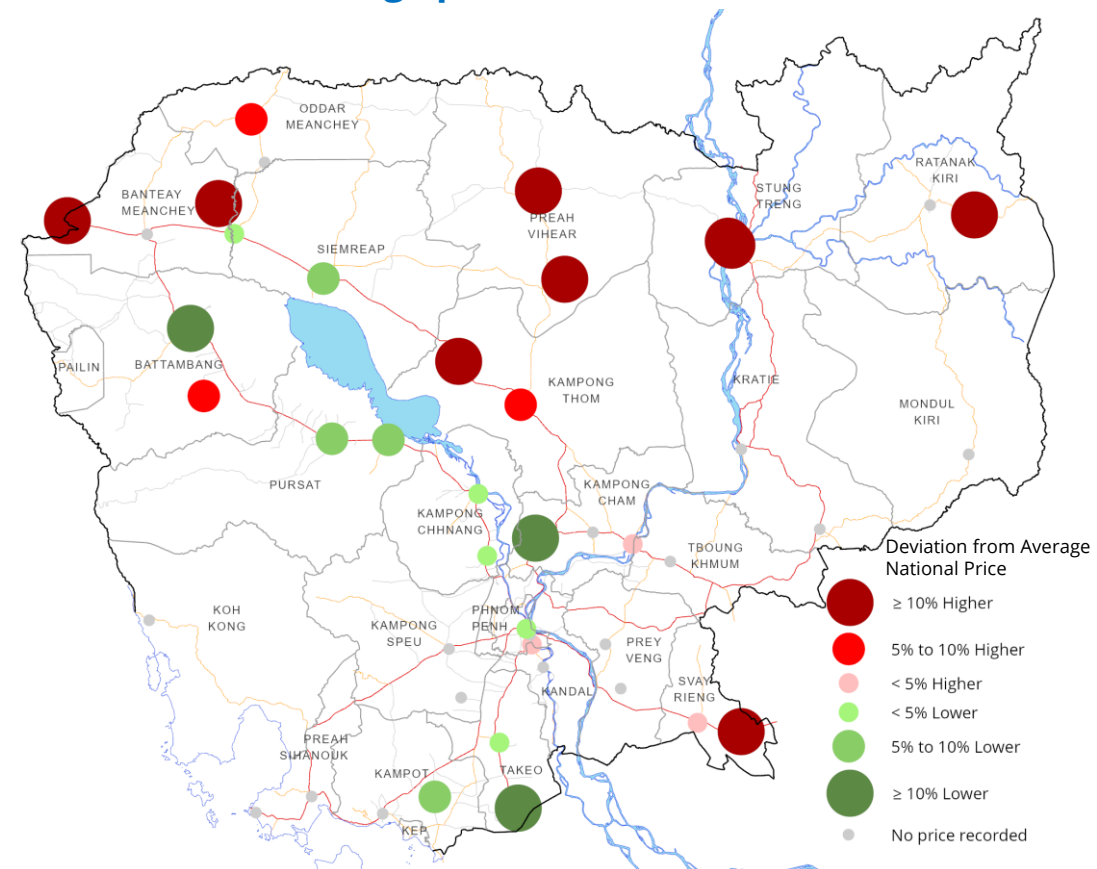
In March 2021, the national average retail price for mixed rice was **2,180 Riels/kg**. The highest price was 2,600 Riels in Prey Veng market in Prey Veng and it was 19% higher than the national average. The lowest price was 1,900 Riels in Kralanh market in Siem Reap which was 13% lower than the national average.

In March 2021, the national average retail price for duck eggs was **4,417 Riels/10 eggs**. The highest price (5,000 Riels) was reported in several markets throughout the country as presented in the map below (13% higher than the national average). The lowest price (3,000 Riels) was in Boeung Chhouk market in Battambang (32% lower than the national average).

Mixed rice prices by province vs national average prices (March 2021)



Duck egg prices by province vs national average prices (March 2021)

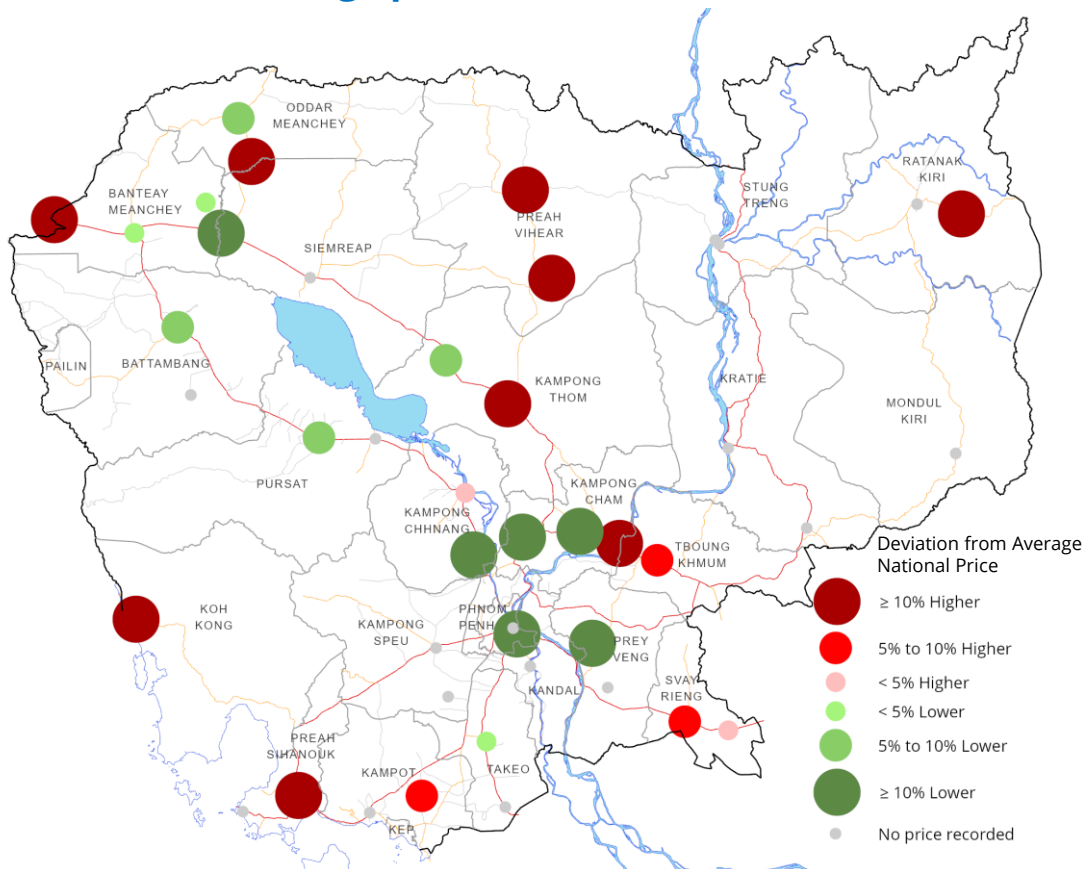


Sub-national: Price variation for snakehead fish and vegetable oil

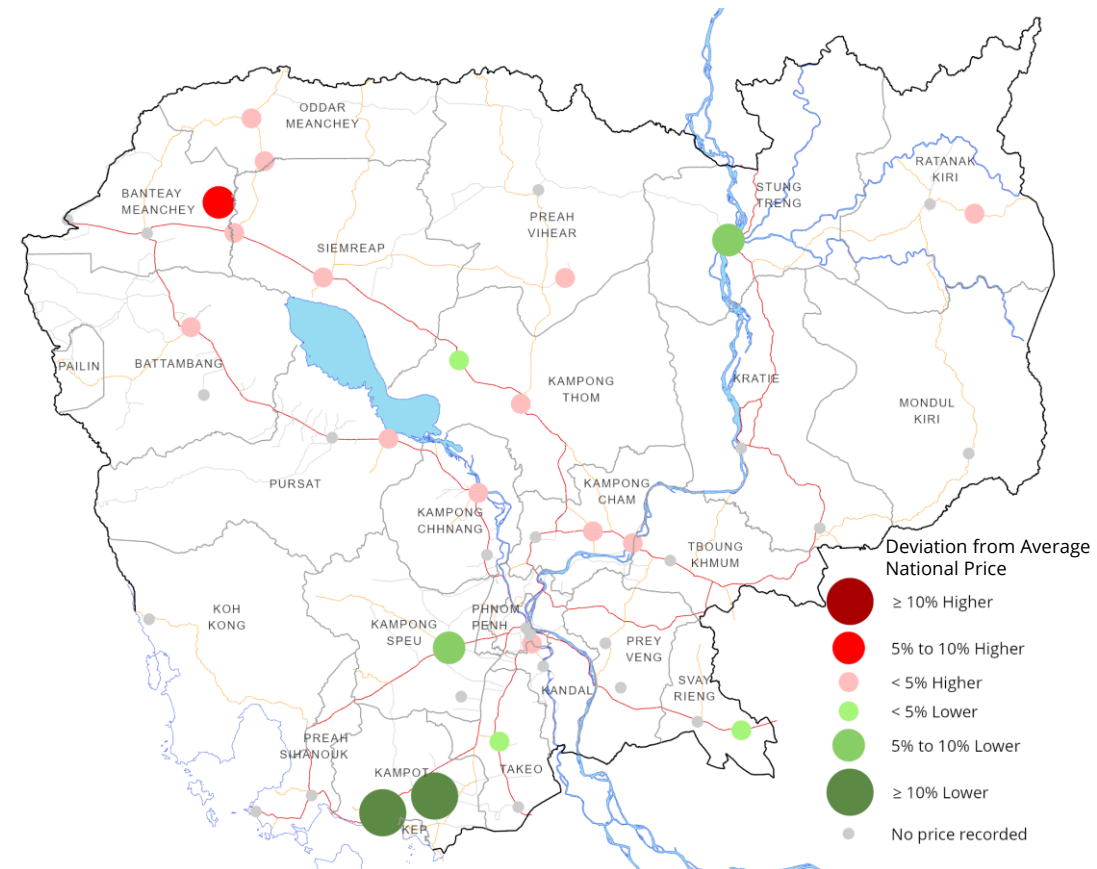
In March 2021, the national average retail price of snakehead fish (live) was **8,419 Riels/kg**. The highest price (13,000 Riels) was found in Dang Tong market in Koh Kong (54% higher than the national average). The lowest price (4,500 Riels) was found in Pha Oav market in Kampong Cham (47% lower than the national average).

In March 2021, the national average retail price of vegetable oil was **24,439 Riels/5 liters**. The highest price (26,000 Riels) was in Phnom Srok market in Banteay Meanchey (6% higher than the national average). The lowest price (21,250 Riels) was found in Dang Tong market in Kamptot (13% lower than the national average).

Snakehead fish prices by province vs national average prices (March 2021)



Vegetable oil prices by province vs national average prices (March 2021)



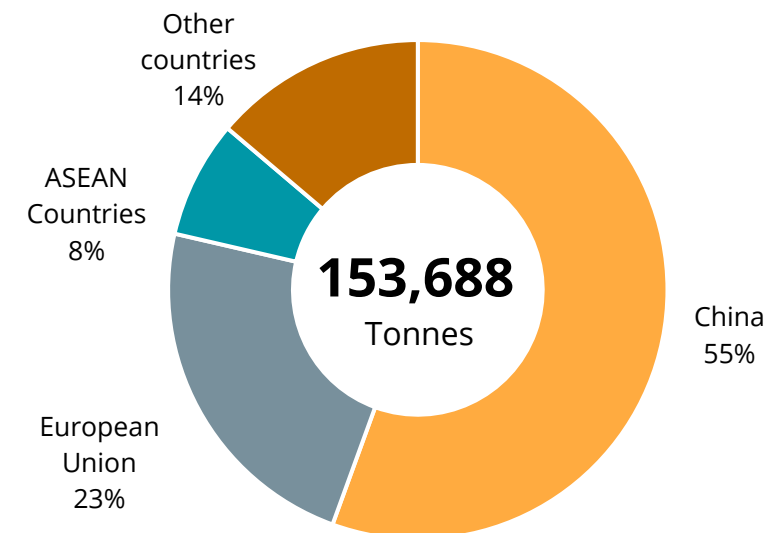
Trade and local production

Despite the impact of COVID-19 and natural hazards on the Cambodian economy in 2020, aggregate agricultural production statistics remain favorable. According to a 26 March statement on the official Facebook page of H.E. Veng Sakhon, Minister of the Ministry of Agriculture, Forestry and Fisheries (MAFF), the total area cultivated under paddy rice during the current dry season was more than 649,000 hectares, 42% higher than the plan. Harvesting of the dry season paddy was approximately 75% complete (based on the area harvested), resulting in more than 2.1 million tonnes of paddy for an average yield of 4.47 tonnes/ha. Annex 3 has a map of the geographic distribution of paddy rice cultivation in Cambodia.

A subsequent statement on the same Facebook page (1 April) reported that the amount of *paddy* rice exported to Vietnam and Thailand in the first three months of 2021 was approximately 1.8 million tonnes, which is 114% higher than the same period last year. According to the summary report of the Cambodia Rice Federation, the amount of *milled* rice exported in the first three months of 2021, however, was approximately 153,600 tonnes (valued at USD 110 million) which is 33% lower than the same period last year. China continues to be the main destination of milled rice exports (55%), followed by the European Union (23%), ASEAN countries (8%) and other countries (14%) accounting for the remainder.

In the first three months of 2021, the cultivation area of horticulture, such as white maize, sweet potato, all types of vegetables, chilli, watermelon, etc., was approximately 38,000 hectares, 2% higher than the plan. In addition, the cultivation area of industrial crops, such as red maize, cassava, beans, peanut, soybean, sesame, sugar can, hemp, tobacco, and lotus, was approximately 89,800 hectares, 13% higher than last year (official Facebook page of H.E. Veng Sakhon of MAFF, 26 March 2021).

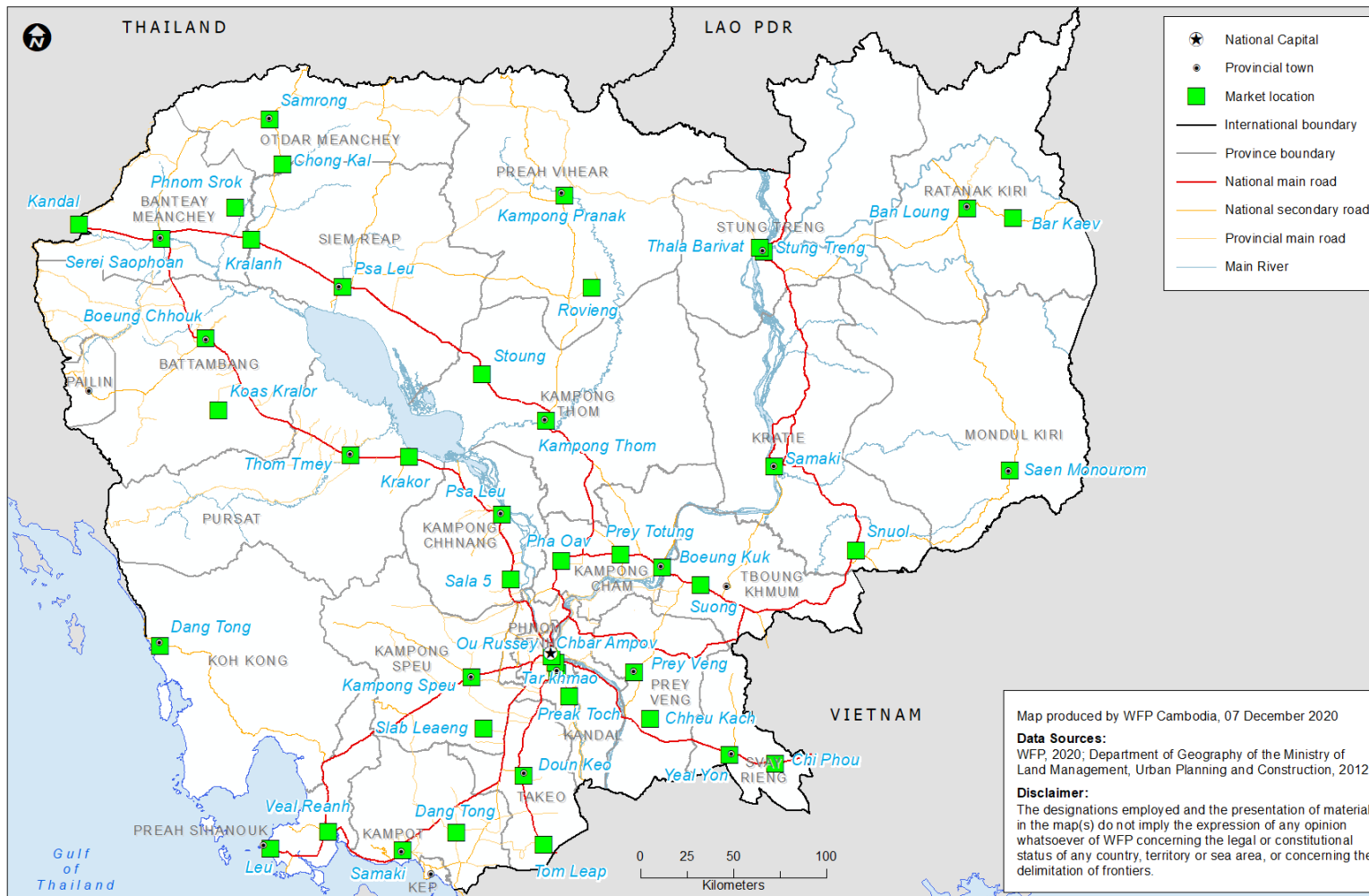
**Milled rice exports, as of March 2021,
by destination**



Source: Secretariat of the Cambodia Rice Federation (2 April 2021)

Methods and market locations

Markets for Remote Data Collection



In November 2019, WFP began monitoring food prices in selected markets using a call center. Trained operators called traders once a month to collect data on 36 food commodities in 14 urban and rural markets in Battambang, Kampong Chhnang, Kampong Thom, Otdar Meanchey, Siem Reap, Preah Vihear and Stung Treng.

In March 2020, WFP, in collaboration with the Agricultural Marketing Office (AMO) of the Ministry of Agriculture, Forestry and Fisheries (MAFF), conducted a market survey in 31 additional markets to collect baseline data and expand the geographic coverage of markets. In these markets, the price of 16 key food commodities and information on market functionality is also collected.

From mid-April 2020, WFP expanded remote market monitoring to all 45 markets and increased the frequency to twice a month (i.e., the first and third weeks of the month).

Agricultural Marketing Office

Department of Planning and Statistics,
Ministry of Agriculture, Forestry and Fisheries

Meach Yady meachyady@gmail.com

Website: <https://www.amis.org.kh/>

United Nations World Food Programme

Vulnerability Analysis and Mapping (VAM) Unit

Aaron Wise aaron.wise@wfp.org , Yav Long yav.long@wfp.org , Chanvibol Choer

chanvibol.choeur@wfp.org , Vannareth Huoy vannareth.huoy@wfp.org

Website: <https://www.wfp.org/countries/cambodia>

Food Commodity	Unit	Average retail prices of current month	Change of retail prices compared to last month	Change of retail prices compared to last 3 months	Change of retail prices compared to same month, last year
1.1. អង្ករចម្រុះ/ Mixed Rice	Riels/Kg	2,180	▶ 1.6%	▶ 4.4%	▶ 4.4%
2.1. ត្រីផ្ទុក់(រស់)/ Snakehead fish (Live)	Riels/Kg	8,419	▼ -6.1%	▶ -4.2%	▼ -31.0%
2.2. ត្រីប្រា(រស់)/ Trey Pra (Live)	Riels/Kg	6,415	▶ 1.1%	▶ -1.0%	▼ -30.1%
2.3. ត្រីអណ្តែង(រស់)/ Cat fish (Live)	Riels/Kg	7,025	▶ -3.6%	▶ -3.4%	▼ -31.5%
2.4. ត្រីផ្ទុក់ដៀត/ Dried snake fish	Riels/Kg	23,771	▶ 0.5%	▶ 0.2%	▼ -24.7%
3.1. សាច់ជ្រូក៣ជាន់/ 3-layer pork/Pork with fat	Riels/Kg	21,919	▶ -2.8%	▲ 6.7%	▲ 11.1%
4.1. ស៊ីតទា/Duck egg (Riels/10 eggs)	Riels/10 eggs	4,417	▼ -5.5%	▼ -10.2%	▼ -17.8%
4.2. ស៊ីតទាប្រៃ/Salty/Fermented duck egg	Riels/10 eggs	6,085	▶ 0.5%	▶ -2.5%	▼ -15.7%
5.1. ប្រេងឆា/ Vegetable Oil: Saji ឬ Mongsay ឬ Cailan	Riels/ 5 litre	24,439	▶ 0.0%	▲ 12.3%	▲ 15.5%
6.1. អំបិលម៉ត់អ៊ីយូត/ Iodized salt	Riels/Kg	1,197	▲ 6.1%	▶ 0.3%	▼ -11.0%
7.1. សណ្តែកដី/ Ground Nut*	Riels/Kg	9,987	▲ 8.0%	▲ 11.2%	▶ 4.7%
8.1. ត្រីកូន/ Morning glory	Riels/Kg	2,443	▲ 13.6%	▶ -4.8%	▼ -14.9%
8.2. កាបូត/ Carrot*	Riels/Kg	3,152	▼ -7.0%	▼ -5.6%	▶ -2.8%
8.3. ស្លឹកបាស/ Ivy gourd leave*	Riels/Kg	5,548	▶ 0.3%	▲ 14.1%	▲ 9.5%
8.4. ស្លឹកម្រៃ/ Moringa leaves*	Riels/Kg	3,889	▼ -23.1%	▶ -1.8%	▼ -22.2%
8.5. ស្ពៃក្រញាញ់/ Chinese spinach*	Riels/Kg	3,152	▲ 18.0%	▲ 5.7%	▶ -0.5%
8.6. ស្ពៃត្នោ/ Pak Choi*	Riels/Kg	3,456	▲ 32.5%	▲ 8.3%	▲ 11.2%
8.7. ស្ពៃចង្កឹះ/Chinese flowering cabbage	Riels/Kg	3,082	▲ 34.0%	▲ 27.9%	▼ -11.3%
8.8. ស្ពៃខៀវ/Mustard Greens*	Riels/Kg	3,203	▲ 17.4%	▶ 4.8%	▲ 5.5%
8.9. ផ្លីដូង/ Amaranthus*	Riels/Kg	3,557	▶ 1.6%	▼ -24.1%	▶ 2.0%
8.10. ស្លឹកងាប់/ Ngob leaves*	Riels/Kg	5,556	▼ -18.3%	▲ 24.6%	▲ 11.1%
8.11. ត្រួយល្ពៅ/ Pumpkin leaves*	Riels/Kg	4,423	▼ -11.5%	▼ -9.8%	▲ 60.8%
8.12. ផ្លែល្ពៅ/ Pumpkin fruit*	Riels/Kg	2,350	▼ -12.9%	▼ -20.4%	▲ 7.5%
8.13. ប្លោក/ Bottle gourd*	Riels/Kg	1,792	▶ -1.1%	▼ -18.6%	▶ 0.0%
8.14. ត្រឡាច/ Wax gourd	Riels/Kg	1,868	▶ -0.5%	▼ -19.9%	▼ -22.0%
8.15. ត្រប់វែង/ Long eggplants	Riels/Kg	2,197	▼ -11.3%	▼ -34.9%	▼ -13.4%
8.16. ត្រប់ស្រយ/ Round eggplants*	Riels/Kg	2,261	▼ -7.4%	▼ -26.8%	▲ 6.3%
8.17. ប៉េងប៉ាះ/ Tomatoes*	Riels/Kg	2,244	▼ -20.7%	▼ -41.1%	▼ -11.8%
8.18. ននោងមូល/ Spong gourd	Riels/Kg	2,138	▶ -1.4%	▼ -28.0%	▼ -24.2%
8.19. ននោងជ្រុង/ Ridge Gourd*	Riels/Kg	2,308	▼ -8.3%	▼ -27.1%	▼ -23.1%
8.20. ល្អងខ្ចី/ Green papaya*	Riels/Kg	1,708	▲ 11.7%	▲ 34.8%	▲ 14.0%
8.21. សណ្តែកគូរ/ Long bean	Riels/Kg	2,989	▼ -5.5%	▼ -43.0%	▼ -29.2%
8.22. ត្រឡាចចែក/ Banana flower*	Riels/Kg	3,076	▶ -1.0%	▶ 0.4%	▼ -12.1%
8.23. ផ្កាខាត់ណា/ Cauliflower*	Riels/Kg	4,155	▲ 23.9%	▼ -38.4%	▶ -4.6%
8.24. ដើមខាត់ណា/ Chinese Kale*	Riels/Kg	3,428	▲ 17.3%	▼ -31.1%	▼ -11.9%
8.25. ដំឡូងពណ៌លឿង/ Orange-flesh Sweet Potatoes*	Riels/Kg	2,667	▶ 1.9%	▲ 23.3%	▲ 15.2%

Annex 1 Change in retail prices (March 2021)

Change in the price compared to last month and last year:

- ▲ Increase when % > 5
- ▶ Stable when % between 5 and -5
- ▼ Decrease when % < -5

* Prices for these food commodities are only collected in markets in provinces where home-grown school feeding is implemented.

Food Commodity	Unit	Average wholesale prices of current month	Change of wholesale prices compared to last month	Change of wholesale prices compared to last 3 months	Change of wholesale prices compared to same month, last year
1.1. អង្ករចម្រុះ/ Mixed Rice	Riels/Kg	2,070	▶ 2.5%	▶ 4.8%	▲ 8.4%
2.1. ត្រីផ្ទុក(រស់)/ Snakehead fish (Live)	Riels/Kg	7,635	▶ -3.4%	▶ -3.5%	▼ -28.6%
2.2. ត្រីប្រា(រស់)/ Trey Pra (Live)	Riels/Kg	5,756	▶ 0.8%	▶ -2.1%	▼ -26.3%
2.3. ត្រីអណ្តែង(រស់)/ Cat fish (Live)	Riels/Kg	6,345	▶ -2.0%	▶ -3.6%	▼ -28.9%
2.4. ត្រីផ្ទុកដៀត/ Dried snake fish	Riels/Kg	22,219	▶ -0.6%	▶ -0.1%	▼ -23.0%
3.1. សាច់ជ្រូក៣ជាន់/ 3-layer pork/Pork with fat	Riels/Kg	20,737	▶ -1.1%	▲ 8.1%	▲ 16.2%
4.1. ស៊ីតទា/Duck egg (Riels/10 eggs)	Riels/10 eggs	4,002	▶ -4.2%	▼ -12.1%	▼ -17.6%
4.2. ស៊ីតទាប្រៃ/Salty/Fermented duck egg	Riels/10 eggs	5,623	▶ -1.2%	▶ -4.5%	▼ -9.9%
5.1. ប្រេងឆា/ Vegetable Oil: Saji ឬ Mongsay ឬ Cailan	Riels/ 5 litre	23,887	▶ 0.2%	▲ 11.6%	▲ 20.0%
6.1. អំបិលម៉ត់អ៊ុយត/ Iodized salt	Riels/Kg	1,014	▲ 6.4%	▶ 1.0%	▼ -7.9%
7.1. សណ្តែកដី/ Ground Nut*	Riels/Kg	9,139	▲ 6.2%	▲ 7.0%	▶ -1.3%
8.1. ត្រីកូន/ Morning glory	Riels/Kg	1,956	▲ 13.7%	▼ -7.5%	▼ -15.7%
8.2. កាបូត/ Carrot*	Riels/Kg	2,641	▼ -8.7%	▶ -2.4%	▶ -2.1%
8.3. ស្លឹកបាស/ Ivy gourd leave*	Riels/Kg	4,423	▶ 4.6%	▲ 13.9%	▶ 2.9%
8.4. ស្លឹកម្រៃ/ Moringa leaves*	Riels/Kg	3,463	▼ -24.3%	▶ 0.4%	▼ -13.4%
8.5. ស្ពៃក្រញាញ់/ Chinese spinach*	Riels/Kg	2,608	▲ 21.2%	▲ 13.6%	▶ 1.9%
8.6. ស្ពៃត្នោ/ Pak Choi*	Riels/Kg	2,867	▲ 38.1%	▲ 17.1%	▲ 14.3%
8.7. ស្ពៃចង្កឹះ/Chinese flowering cabbage	Riels/Kg	2,611	▲ 42.2%	▲ 37.7%	▼ -6.2%
8.8. ស្ពៃខៀវ/Mustard Greens*	Riels/Kg	2,655	▲ 22.0%	▲ 8.9%	▲ 9.5%
8.9. ផ្លីដូង/ Amaranthus*	Riels/Kg	2,619	▶ -4.1%	▼ -27.9%	▶ -1.4%
8.10. ស្លឹកងប់/ Ngob leaves*	Riels/Kg	4,722	▼ -21.3%	▲ 24.5%	▲ 18.1%
8.11. ត្រួយល្ពៅ/ Pumpkin leaves*	Riels/Kg	3,890	▼ -10.4%	▶ -4.4%	▲ 72.9%
8.12. ផ្លែល្ពៅ/ Pumpkin fruit*	Riels/Kg	1,817	▼ -16.9%	▼ -25.9%	▲ 6.3%
8.13. ប្លោក/ Bottle gourd*	Riels/Kg	1,492	▶ -3.8%	▼ -15.6%	▶ 0.0%
8.14. ត្រឡាច/ Wax gourd	Riels/Kg	1,427	▼ -5.2%	▼ -26.2%	▼ -22.4%
8.15. ត្រប់វែង/ Long eggplants	Riels/Kg	1,723	▼ -13.6%	▼ -39.6%	▼ -12.9%
8.16. ត្រប់ស្រយ/ Round eggplants*	Riels/Kg	1,720	▼ -12.8%	▼ -32.1%	▲ 6.5%
8.17. ប៉េងប៉ា/ Tomatoes*	Riels/Kg	1,752	▼ -19.6%	▼ -44.7%	▼ -10.8%
8.18. ននោងមូល/ Spong gourd	Riels/Kg	1,747	▶ 0.9%	▼ -31.8%	▼ -19.1%
8.19. ននោងជ្រុង/ Ridge Gourd*	Riels/Kg	1,788	▼ -10.8%	▼ -34.3%	▼ -10.6%
8.20. ល្អងខ្ចី/ Green papaya*	Riels/Kg	1,368	▲ 11.3%	▲ 46.3%	▲ 26.1%
8.21. សណ្តែកគូរ/ Long bean	Riels/Kg	2,440	▼ -6.1%	▼ -47.0%	▼ -29.8%
8.22. ត្រឡាចចេក/ Banana flower*	Riels/Kg	2,598	▶ 2.4%	▶ -0.7%	▼ -17.9%
8.23. ផ្កាខាត់ណា/ Cauliflower*	Riels/Kg	3,637	▲ 33.7%	▼ -38.8%	▶ -3.1%
8.24. ដើមខាត់ណា/ Chinese Kale*	Riels/Kg	2,797	▲ 17.8%	▼ -33.0%	▼ -13.0%
8.25. ដំឡូងពណ៌លឿង/ Orange-flesh Sweet Potatoes*	Riels/Kg	2,318	▶ 4.5%	▲ 32.9%	▲ 28.3%

Annex 2 Change in wholesale prices (March 2021)

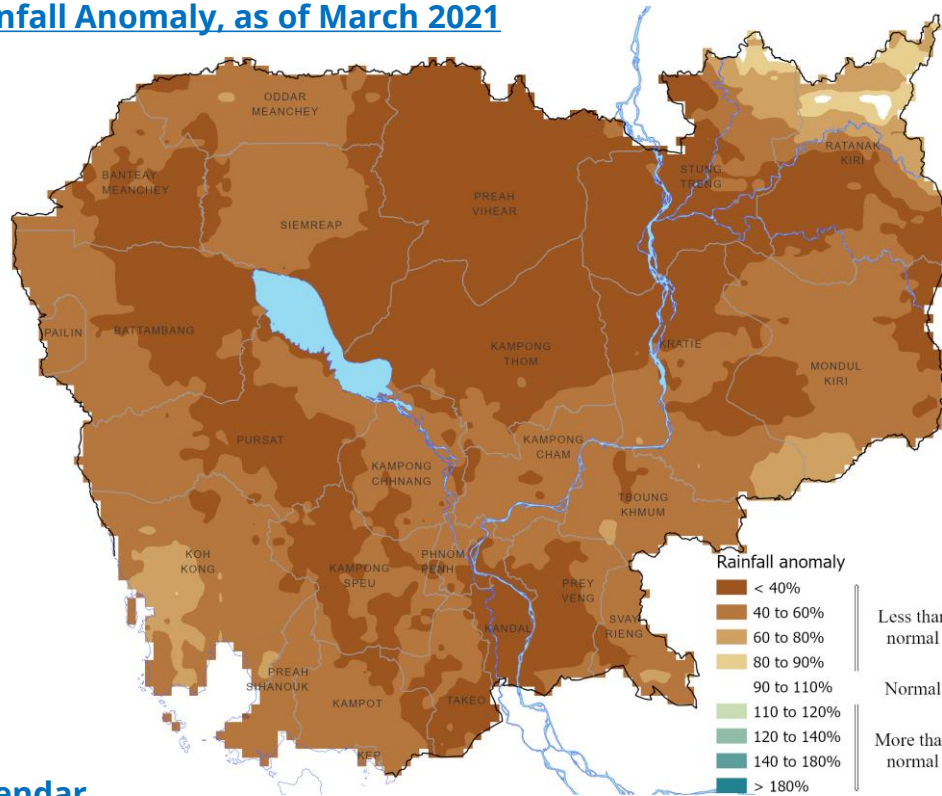
Change in the price compared to last month and last year:

- ▲ Increase when % > 5
- ▶ Stable when % between 5 and -5
- ▼ Decrease when % < -5

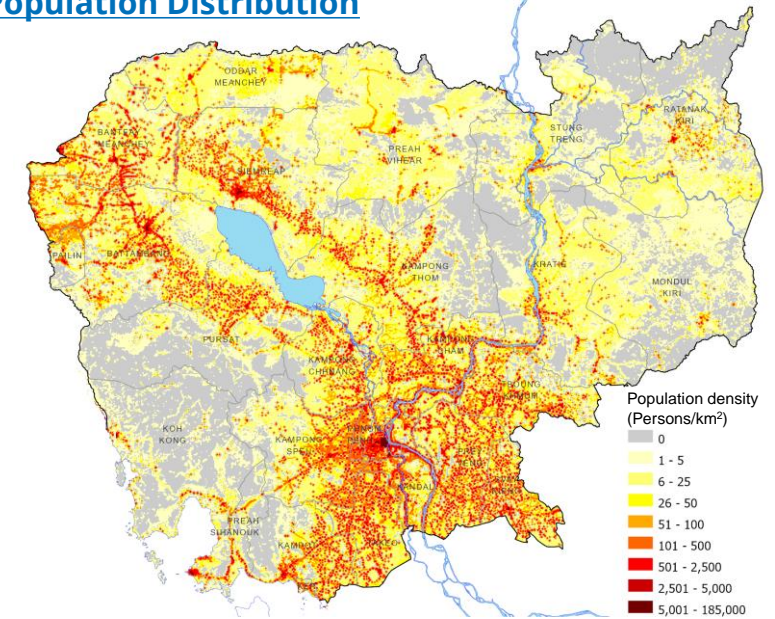
* Prices for these food commodities are only collected in markets in provinces where home-grown school feeding is implemented.

Annex 3: Rainfall anomaly, seasonal calendar, population distribution and paddy cultivation areas

3-Month Rainfall Anomaly, as of March 2021

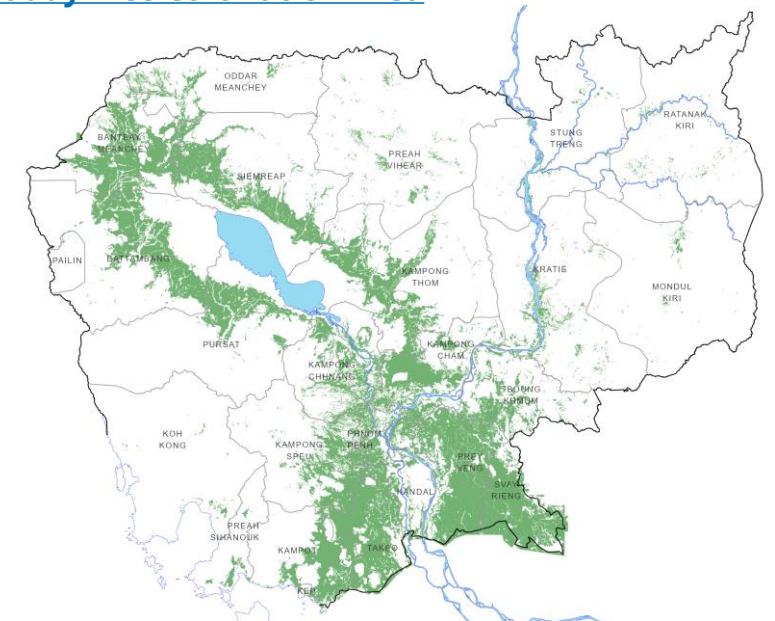


Population Distribution



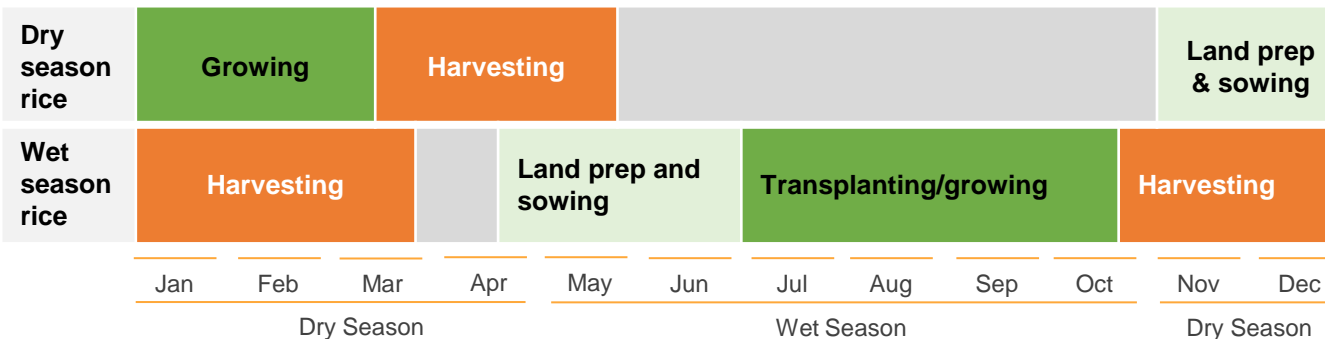
Source: LandScan™ Global, Oak Ridge National Laboratory, 2019

Paddy Rice Cultivation Area



Source: Ministry of Land Management, Urban Planning and Construction, 2008

Seasonal Calendar



Source: Preliminary Rainfall from CHIRPS and analysis by WFP Cambodia