



CAMBODIA

Market Update

April 2021

Focus: Effect of the COVID-19 outbreak on food prices

United Nations World Food Programme in partnership with
Agriculture marketing Office of the Ministry of Agriculture, Forestry and Fisheries



Preface

The COVID-19 pandemic has been rapidly evolving since the beginning of 2020. On 11 March 2020, the World Health Organization (WHO) categorized it as a global pandemic. There have been more than 151 million confirmed cases and more than 3.1 million deaths worldwide (WHO, 2 May 2021). In Cambodia, since the first reported case on 27 January 2020, there have been a total of 15,361 confirmed cases, of which 14,806 cases were linked to the recent (20 February 2021) community transmission, and 106 deaths nationwide (MOH, 3 May 2021).

The COVID-19 pandemic has had a major impact on the global economy. Trade and travel have been severely restricted and many countries, including Cambodia and others across Asia, have instituted measures to contain the spread. In April 2021, Cambodia implemented a series of lockdowns in Phnom Penh and other locations to contain the 20 February 2021 community outbreak.

In order to understand if the COVID-19 pandemic has impacted food availability and access at markets in Cambodia, the World Food Programme (WFP) monitors the retail and wholesale prices of key food commodities (see Annex 1 and 2) in 45 urban and rural markets across the country (see Methods section for more details). An average of 340 traders and market chiefs are interviewed every two weeks using a call center contracted by WFP. In addition to prices, market chiefs are also interviewed to assess market functionality, including supply and demand issues. Additional information is used to interpret the results and understand the broader context.

This update is based on market data collected in the first and third weeks of April 2021.

This system is based on long-term cooperation between WFP and the Agricultural Marketing Office (AMO) of the Ministry of Agriculture, Forestry and Fisheries (MAFF).

Content

1. Key findings	3
2. Results	
Market functionality	4
National: Price trends of mixed rice, duck egg, and morning glory	5
National: Price trends of snakehead fish, pork, and vegetable oil	6
Sub-national: Price differences and changes in urban and rural areas	7
Sub-national: Price variation for mixed rice and duck eggs	8
Sub-national: Price variation for snakehead fish and vegetable oil	9
3. Context	
Trade and local production	10
Policy response	11
4. Methods and market locations	12
5. Annex 1	
Changes in retail prices	13
6. Annex 2	
Changes in wholesale prices	14
7. Annex 3	
Rainfall anomaly, seasonal calendar, population distribution and paddy cultivation areas	15

Key findings

COVID-19 & Environmental Factors Influencing Prices

The COVID-19 pandemic continues to spread and impact economic activities across the world. The World Bank has projected that economic activity in Cambodia contracted by 2% in 2020 due largely to the impacts of COVID-19. However, the gradual easing of social distancing measures and continued benefits of the Government's fiscal support is expected to drive growth of 4% in 2021.

Beginning from 15 April 2021, the Government of Cambodia implemented a series of lockdowns in Phnom Penh, Ta Khmau (Kandal) and other locations to contain the 20 February community outbreak. The lockdown persists in some areas. All state and unregulated markets in Phnom Penh, Ta Khmau district (Kandal), and Preah Sihanouk remain closed.

Through the first four months of 2021, Cambodia exported 192,400 tonnes of milled rice, -35% compared to the same period last year.



National Food Price Trend Analysis (January 2020 – April 2021)

Since January 2020, domestic food prices have remained stable for most key food commodities, though spikes in March and October were observed. The March spike was likely related to the increase of COVID-19 cases and subsequent border closures. Price fluctuations in October and November 2020 were largely a result of the large-scale floods.

Between January 2021 and April 2021, national average retail prices for snakehead fish (+9.1%) and vegetable oil (+7.3%) have increased. Prices of morning glory (-21.2%) have decreased. Prices of mixed rice, pork, and duck egg have remained relatively stable over the same period. See Annex 1 and 2 for more detail.



Sub-national Monthly Food Price Change (April 2021)

In April 2021, the average retail prices for rice, pork, duck egg, vegetable oil, and morning glory in rural areas were lower than in urban areas while the average retail prices of snakehead fish in rural areas were higher than urban areas.

One-month price changes for snakehead fish, duck egg, and morning glory followed similar patterns across urban and rural markets. Prices for rice and pork remain unchanged in urban areas; the price of snakehead fish rose 20% in rural areas. Vegetable oil prices decreased in rural areas while they increased in urban areas.

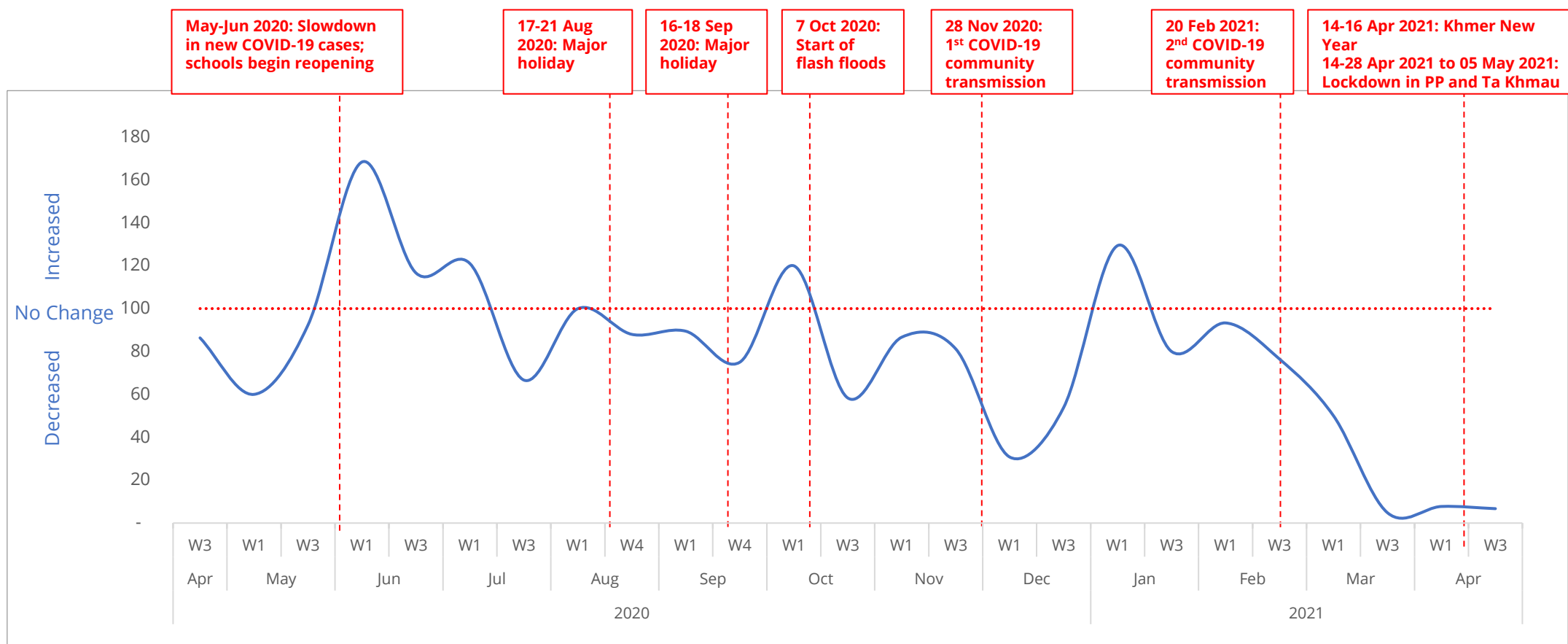
At provincial level, Koh Kong, Kandal, Ratanakiri and Oddar Meanchey had the highest reported prices for several key food commodities, such as mixed rice, duck egg, snakehead fish, and vegetable oil.

Conclusion:

In April 2021, national average prices for key food commodities showed modest changes but remained within expected ranges given seasonal fluctuations. The closure of markets in Phnom Penh and other supply chain disruptions created a shortage of some food supplies (especially meat and vegetables) which led to price increases for some commodities. To mitigate the impact on populations in lockdown areas, the Government implemented a large-scale food response led by Ministry of Commerce, including the regulation of prices for certain food commodities which helped prevent prices from spiralling. As of 24 April 2021, about 693,000 IDPoor households (more than 2.7 million people) have received cash transfers, totaling an estimated USD 291 million since June 2020. As of 4 May 2021, more than 343,000 families living in lockdown areas in Phnom Penh, Kandal, Preah Sihanouk, and Banteay Meanchey had received emergency food assistance provided by His Majesty King, the Prime Minister, the RGC, private companies, civil society/NGOs and individuals.

Market functionality

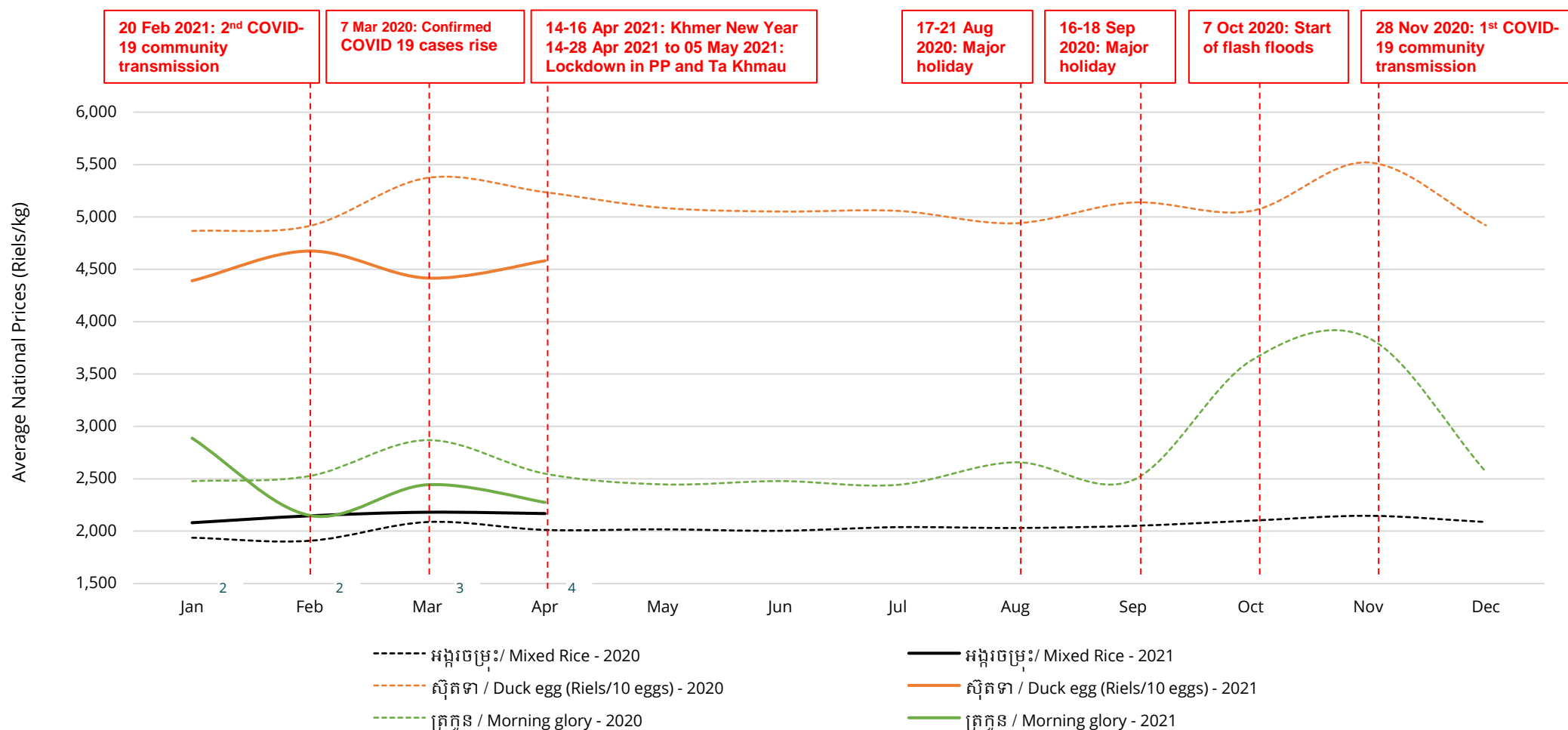
In the 45 markets monitored across the country, market chiefs were interviewed on the availability and supply of food in the market, market functionality and accessibility, and number of customers visiting in their respective markets in the first and third weeks of the month. All state and unorganized markets in Phnom Penh municipality, Ta Khmau district, and Preah Sihanouk have been closed due to lockdown since mid-April 2021. Within the remaining markets, it was reported that the number of customers, whilst slightly increasing in week 1 of April 2021 before the Khmer New Year, remains depressed following the 20 February community transmission. Furthermore, about one-third of markets (32%) reported facing an increase in supply prices (the first notable increase since WFP began collecting this data in January 2020).



Change in Customers Visiting Markets

National: Price trends of mixed rice, duck eggs, and morning glory

Price trends for three commonly consumed food commodities (mixed rice, duck eggs and morning glory¹) in 45 urban and rural markets in 23 provinces indicate that after a slight spike in March 2020, prices mostly remained stable through October 2020. In April 2021, the average national retail price of mixed rice was 2,167 Riels/kg: -0.6% month-on-month (MoM) and +7.7% year-on-year (YoY). In contrast, the average national retail price for duck eggs was 4,483 Riels/10 eggs: +3.8% MoM and -12.5% YoY. The price for morning glory was 2,274 Riels/kg: -6.9% MoM and -10.8% YoY. See Annex 1 and 2 for additional prices.



¹ Morning glory is commonly eaten in Cambodia and its price trend does not always indicate price fluctuations of other vegetables in the Annexes.

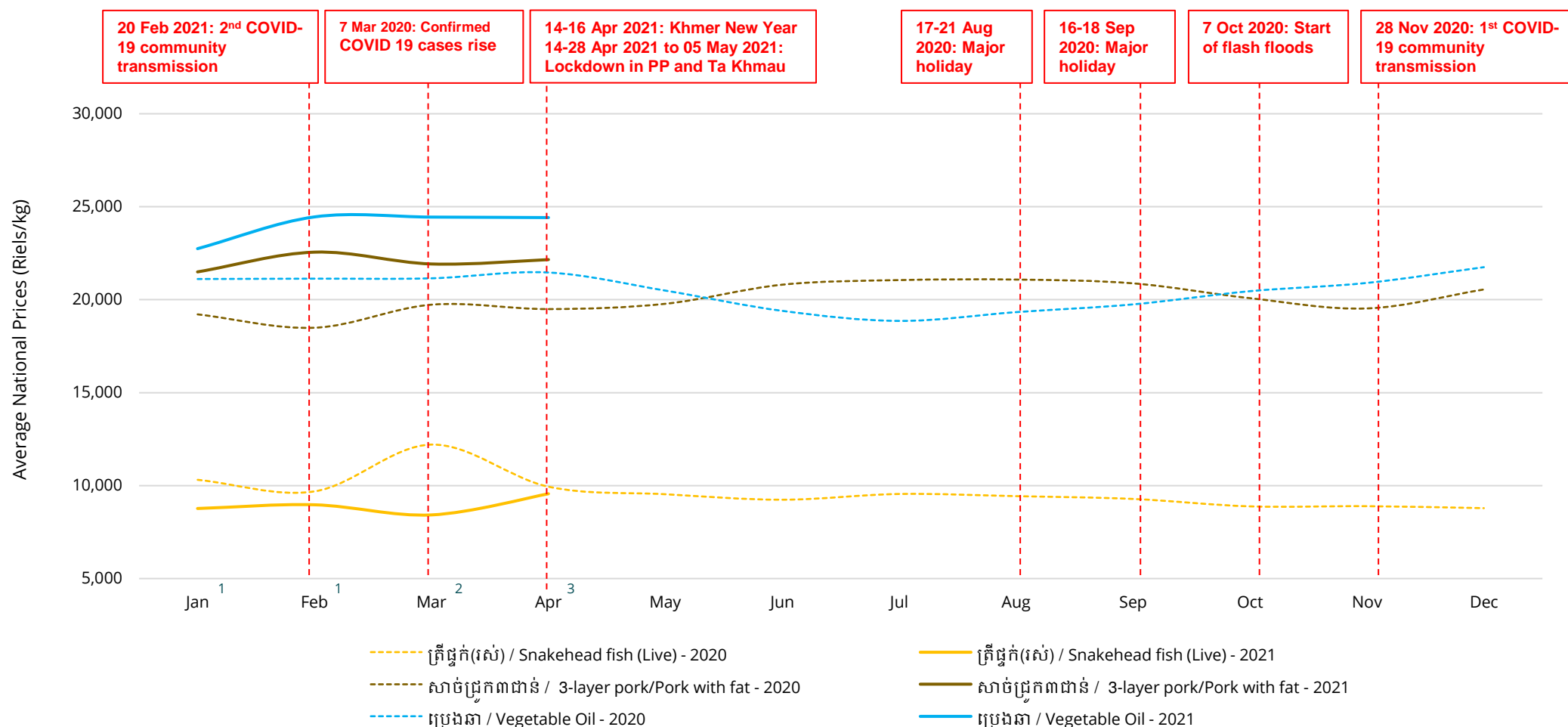
² Food prices in 2020 were remotely collected in the first week of the month in only 14 markets.

³ Food prices in 2020 were remotely collected in the first week of the month in only 14 markets and face-to-face collected by AMO in the third week of the month in 31 additional markets.

⁴ Food prices in 2020 were remotely collected in the first week of the month in only 14 markets and in the third week of the month in 45 markets. However, because of market closures during the lockdown from mid-April 2021, of food price data in the 3rd week from the sentinel markets in PP, Kandal and Preah Sihanouk were not available for analysis.

National: Price trends of snakehead fish, pork, and vegetable oil

Price trends of another three commonly consumed food commodities (snakehead fish, pork and vegetable oil) in 45 urban and rural markets in 23 provinces showed slight fluctuation throughout last year. In April 2021, national average retail price for snakehead fish was 9,567 Riels/kg: +13.6% month-on-month (MoM) and -3.8% year-on-year (YoY). National average retail price for pork was 22,156 Riels/kg: +1.1% MoM and +13.7% YoY. National average retail price for vegetable oil (24,411 Riels/5 litres) remained unchanged MoM and increased +13.7% YoY. See Annex 1 and 2 for additional prices.



¹ Food prices in 2020 were remotely collected in the first week of the month in only 14 markets.

² Food prices in 2020 were remotely collected in the first week of the month in only 14 markets and face-to-face collected by AMO in the third week of the month in 31 additional markets.

³ Food prices in 2020 were remotely collected in the first week of the month in only 14 markets and in the third week of the month in 45 markets. However, because of market closures during the lockdown from mid-April 2021, food price data in the 3rd week from the sentinel markets in PP, Kandal and Preah Sihanouk were not available for analysis.

Sub-national: Price differences and changes in urban and rural areas

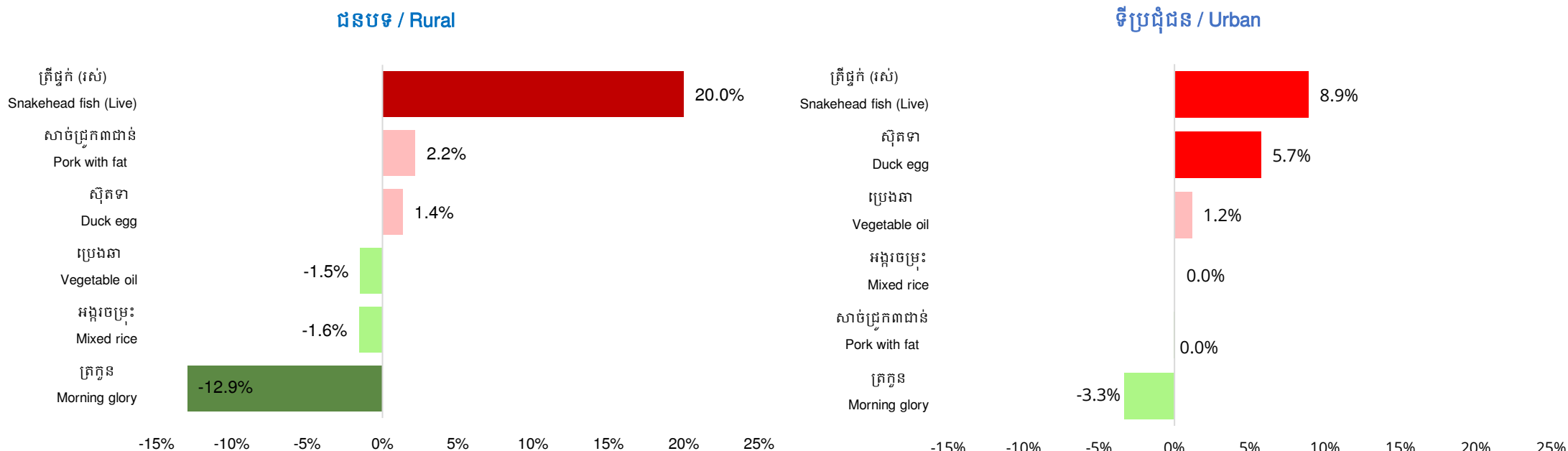
In April 2021, the average retail prices for mixed rice, pork, duck egg, vegetable oil, and morning glory in rural areas were lower than in urban areas while the average retail prices of snakehead fish in rural areas were higher than urban areas (Table 1). Between March and April 2021, the average retail price for snakehead fish, duck egg, and morning glory in rural and urban areas followed the same direction of change, with prices of snakehead fish and duck egg increasing but prices of morning glory decreasing. Prices of snakehead fish and duck egg increased by 20% and 1.4% MoM respectively in rural areas and 8.9% and 5.7% MoM respectively in urban areas. In contrast, prices of morning glory declined by 12.9% MoM in rural areas and 3.3% MoM in urban areas. Prices of vegetable oil decreased by 1.5% in rural areas but increased by 1.2% in urban areas. Prices of pork increased by 2.2% and prices of mixed rice decreased by 1.6% in rural areas while there were no changes in urban areas for these two commodities.

Table 1: Retail prices (riels) in rural and urban areas

	Urban	Rural
Mixed rice (kg)	2,181	2,146
Snakehead fish (Live) (kg)	9,402	9,789
Pork with fat (kg)	22,171	22,139
Duck egg (10 eggs)	4,698	4,448
Vegetable oil (5 liters)	24,698	24,133
Morning glory (kg)	2,402	2,083

Monthly change (%) in retail prices of key food commodities

March 2021 vs April 2021



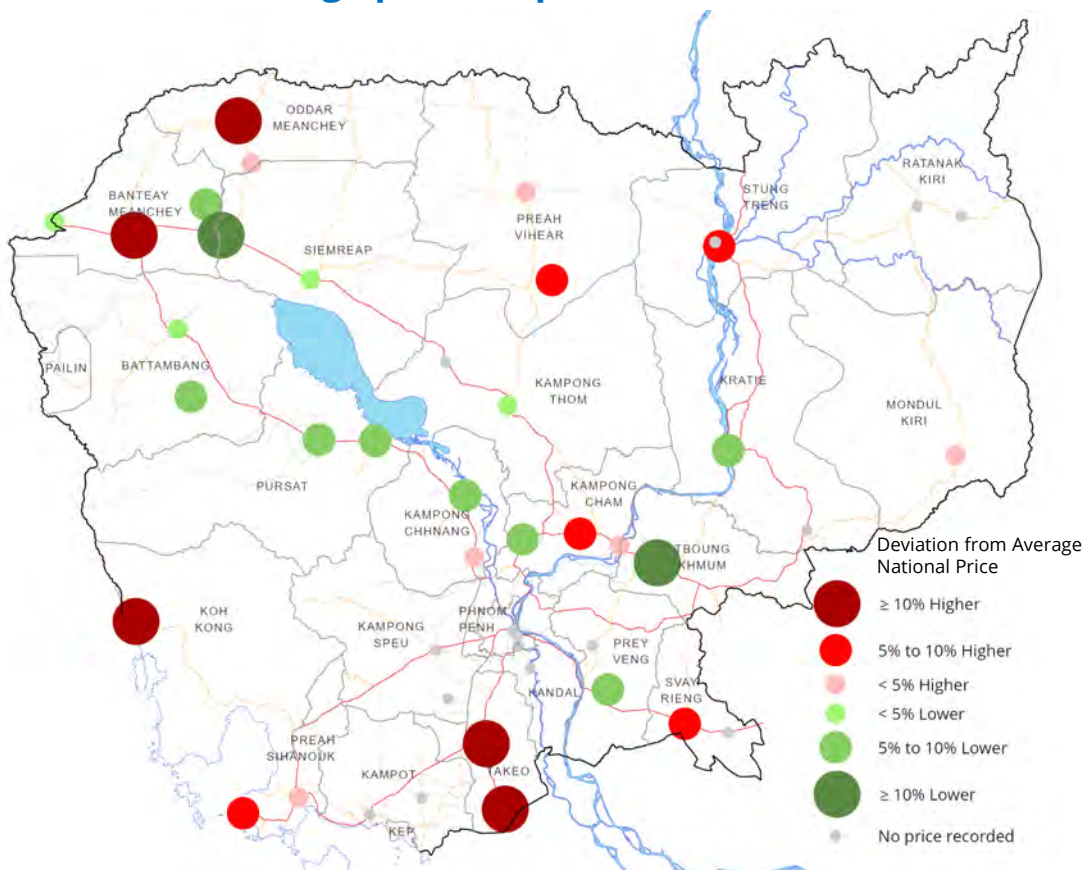
NB: Data is from all 45 markets. See the Methods section for more details. However, because of market closure during lockdown from mid-April 2021, food price data in the 3rd week from the sentinel markets in PP, Kandal and Preah Sihanouk were not available for analysis.

Sub-national: Price variation for mixed rice and duck eggs

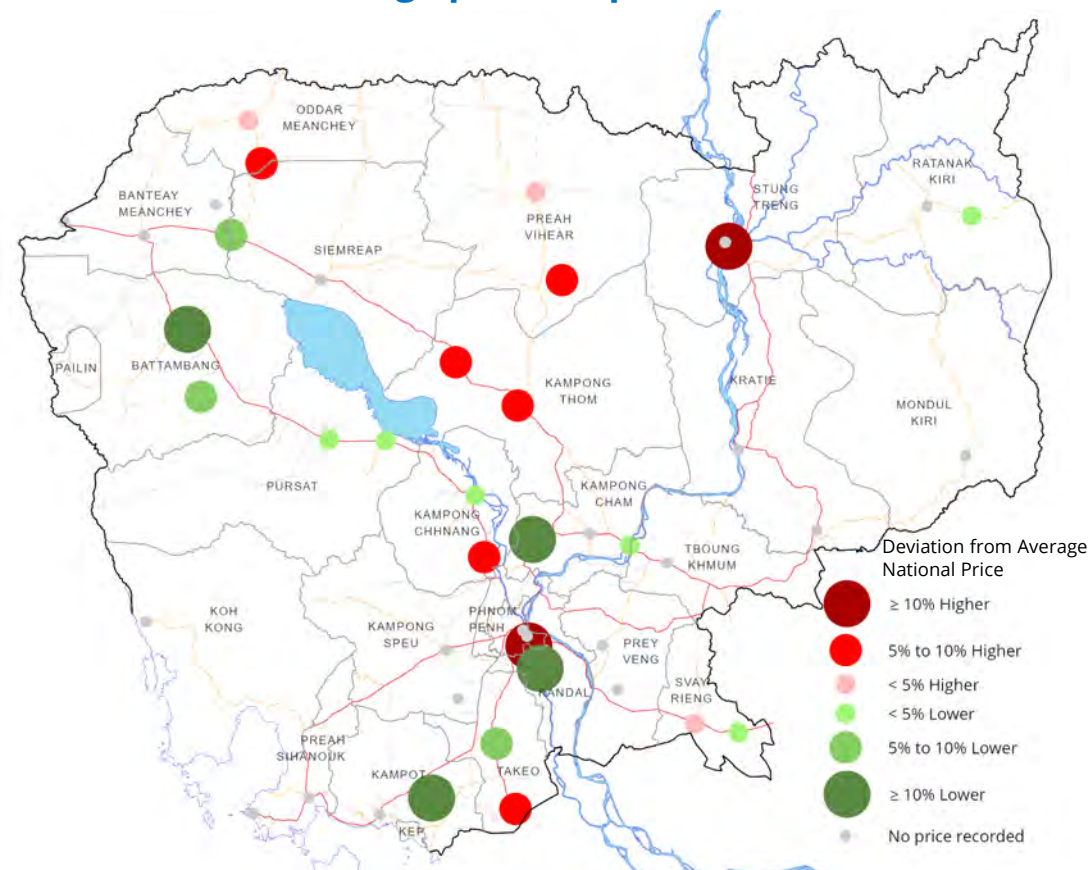
In April 2021, the national average retail price for mixed rice was **2,167 Riels/kg**. The highest price was 2,600 Riels in Dang Tong market in Koh Kong province, and it was 20% higher than the national average. The lowest price was 1,800 Riels in Suong market in Tboung Khmoum province which was 17% lower than the national average. Percentage of price deviation in other markets can be found in the map below.

In April 2021, the national average retail price for duck eggs was **4,583 Riels/10 eggs**. The highest price (5,400 Riels) was reported in Ta Khmau market in Kandal province (18% higher than the national average). The lowest price (3,750 Riels) was in Dang Tong market in Kampot province (18% lower than the national average). Percentage of price deviation in other markets can be found in the map below.

Mixed rice prices by province vs national average prices (April 2021)



Duck egg prices by province vs national average prices (April 2021)

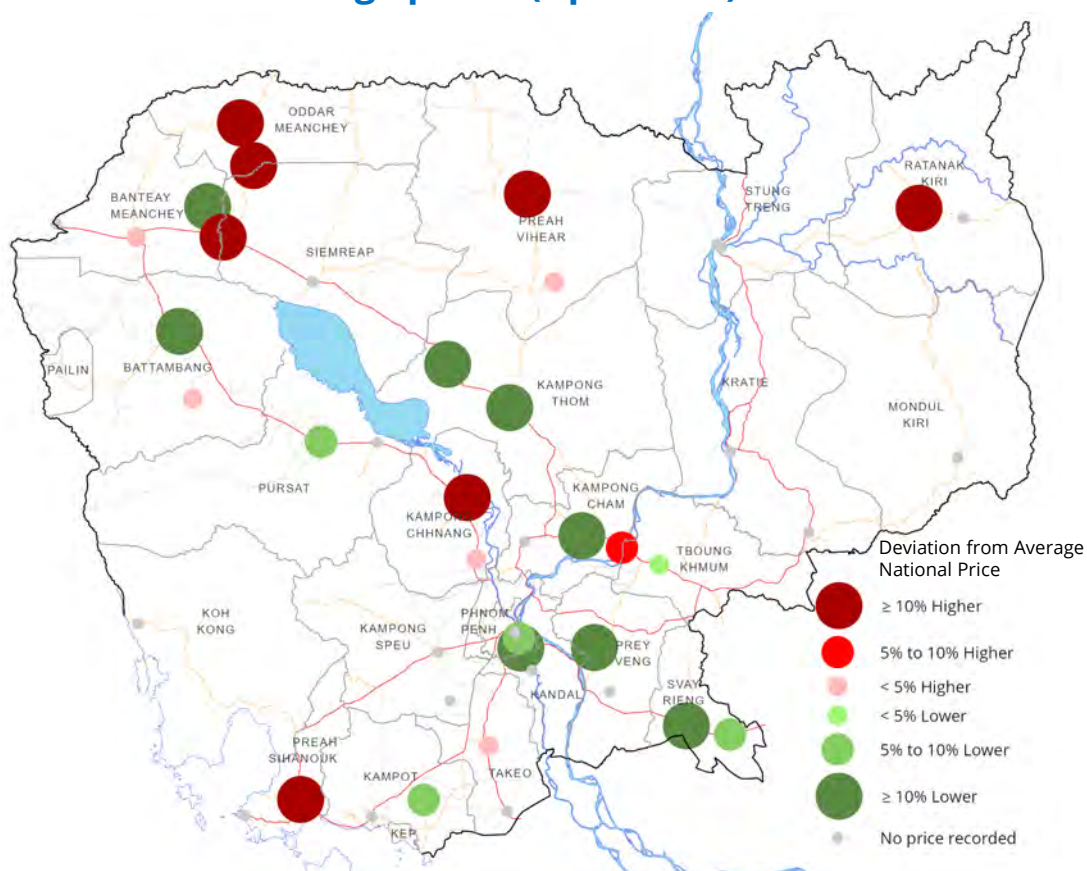


Sub-national: Price variation for snakehead fish and vegetable oil

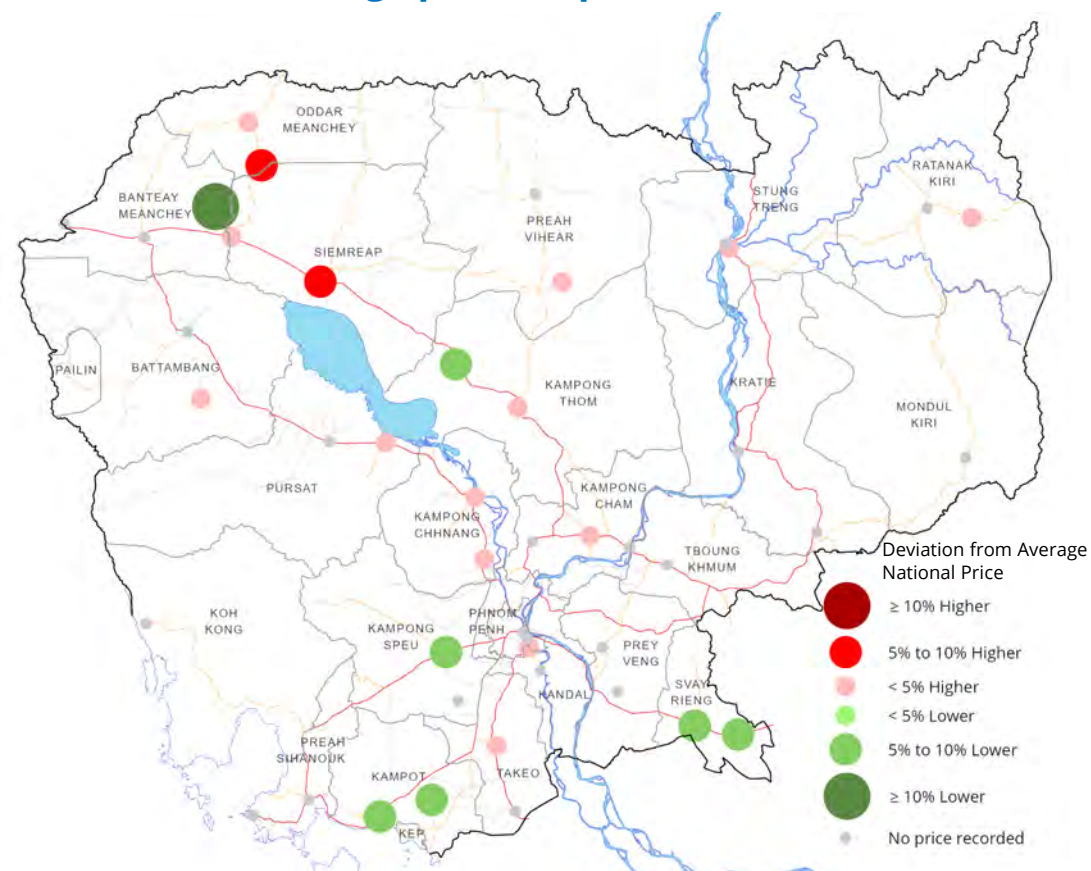
In April 2021, the national average retail price of snakehead fish (live) was **9,567 Riels/kg**. The highest price (13,000 Riels) was found in Ban Loung market in Ratanakiri province (36% higher than the national average). The lowest price (7,500 Riels) was found in Kampong Thom market in Kampong Thom province and Prey Veng market in Prey Veng province (22% lower than the national average). Percentage of price deviation in other markets can be found in the map below.

In April 2021, the national average retail price of vegetable oil was **24,411 Riels/5 liters**. The highest price (26,000 Riels) was in Chong Kal market in Oddar Meanchey province (7% higher than the national average). The lowest price (21,500 Riels) was found in Phnom Srok market in Banteay Meanchey province (12% lower than the national average). Percentage of price deviation in other markets can be found in the map below.

Snakehead fish prices by province vs national average prices (April 2021)



Vegetable oil prices by province vs national average prices (April 2021)



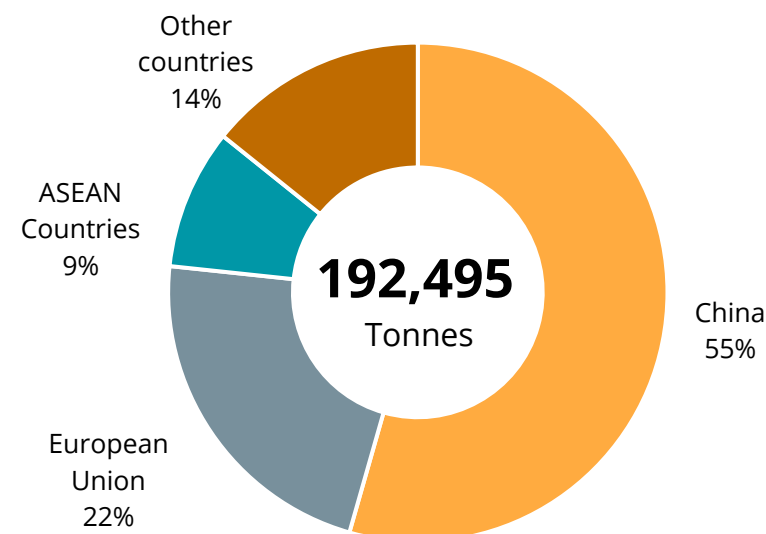
Trade and local production

Despite the impact of COVID-19 and natural hazards on the Cambodian economy in 2020, aggregate agricultural production statistics remain favorable. The amount of paddy rice exported to Vietnam in the first four months of 2021 was approximately 1,529,000 tonnes, which is 73% higher than the same period last year (Ministry of Information, 1 May 2021). According to the same source, the amount of milled rice exported in the first four months of 2021, however, was approximately 192,500 tonnes (valued at USD 161.7 million), which is 35% lower than the same period last year. China continues to be the main destination of milled rice exports (55%), followed by the European Union (22%), ASEAN countries (9%) and other countries (14%) accounting for the remainder.

Since 15 April 2021, areas of Phnom Penh municipality and Ta Khmau district (Kandal province) were in official lockdown due to the COVID-19 pandemic outbreak. To secure the food supply, the Ministry of Agriculture, Forestry and Fishery (MAFF) issued certificates or passes to facilitate traders' transportation of food products into the lockdown areas (Khmer Times, 22 April 2021).

According to Cambodia Livestock Raisers Association president Srun Pov, quoted in Khmer Times on 29 April 2021, the demand of meat in Cambodia, except beef, was about 700 tonnes per days while this number declined by 20% after the COVID-19 community outbreak. The same source also pointed out that despite the drop in consumption and pandemic outbreak, the prices of meat remain relatively unchanged.

**Milled rice exports, as of April 2021,
by destination**



Source: Ministry of Information (1 May 2021)

Policy response

Social policy response

The Government's COVID-19 economic recovery plan includes several social protection measures. Since 24 June 2020, the Government has officially launched a nationwide cash transfer programme for poor and vulnerable households during the pandemic. According to the Ministry of Social Affairs, Veterans and Youth Rehabilitation, about 693,000 IDPoor households (more than 2.7 million people) received the latest round of cash transfers from 25 March 2020 to 24 April 2021. Since June 2020, the Government has distributed an estimated USD 291 million to IDPoor households.

As of 02 May 2021, since the lockdown announcement, more than 325,600 households in Phnom Penh received emergency assistance from His Majesty King, the Prime Minister, the RGC, private companies, civil society/NGOs and individuals (Phnom Penh Municipality Facebook). Emergency assistance rations included 25kg of rice, 1 box of instant noodles, 10 cans of canned fish, 6 bottles of soy sauce and 6 bottles of fish sauce. As of 04 May, assistance had been provided to about 6,300 families in Kandal, 9,300 in Preah Sihanouk and 2,000 in Banteay Meanchey. On 30 April 2021, Phnom Penh administration received 78 MT of rice from MAFF and Government of Japan and the Armed Forces provided 75 MT of rice, 300 boxes of canned fish, 3,000 packages of soy sauce, 3,000 packages of fish sauce, and 6,000 boxes of instant noodles for distribution to people in red zones.

Temporary market

Dom Kor market, which is the biggest wholesale vegetable supply in Phnom Penh, was temporarily closed from 18 April to 1 May 2021 (Phnom Penh Municipality Administration, 17 April 2021). To ensure adequate supply of food to people during lockdown period, the Government of Cambodia provided a temporary market in Takhmau of Kandal province, (Feed Khmer News, 18 April 2021) and Psa Nath Chroy Changva market (Ministry of Information, 24 April 2021).

The Ministry of Commerce (MOC) officially launched online/temporary markets for selling of basic food items to people living in red zones. Virak Buntham company has also received a license from MOC to mobilize 64 trucks to commercialize food throughout the lockdown area, including in the Red Zones (Khmer Times, 23 April 2021).



In-kind distribution to 2000 households living in red zone, Phnom Penh's Posenchey District from His Majesty King and King's Mother.

Source: Facebook Page of Posenchey Authority, 28 April 2021

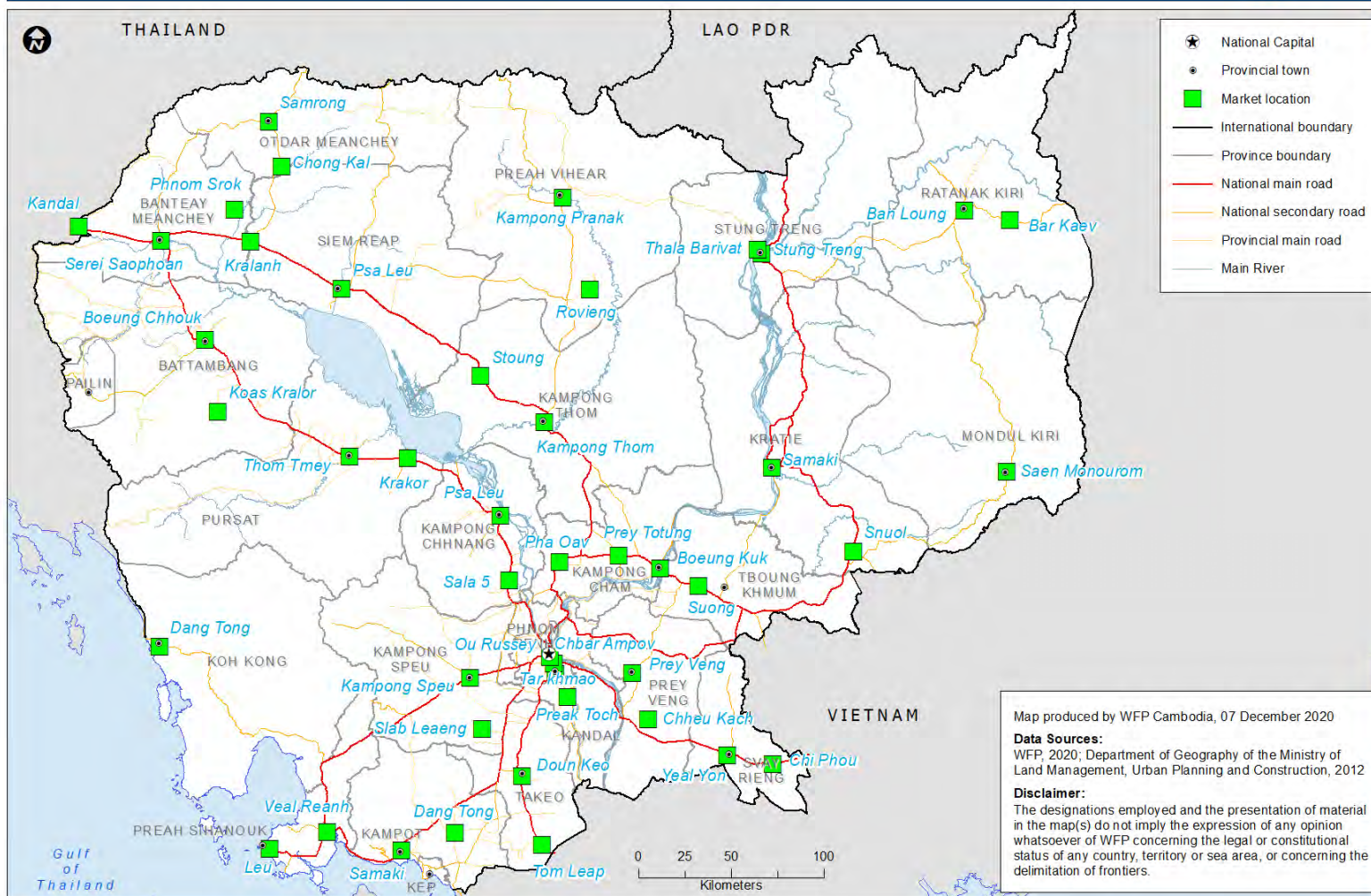


A customer buys meat at a government prepared market in Phnom Penh's Chroy Changva district.

Source: Khmer Time, 29 April 2021

Methods and market locations

Markets for Remote Data Collection



In November 2019, WFP began monitoring food prices in selected markets using a call center. Trained operators called traders once a month to collect data on 36 food commodities in 14 urban and rural markets in Battambang, Kampong Chhnang, Kampong Thom, Otdar Meanchey, Siem Reap, Preah Vihear and Stung Treng.

In March 2020, WFP, in collaboration with the Agricultural Marketing Office (AMO) of the Ministry of Agriculture, Forestry and Fisheries (MAFF), conducted a market survey in 31 additional markets to collect baseline data and expand the geographic coverage of markets. In these markets, the price of 16 key food commodities and information on market functionality is also collected.

From mid-April 2020, WFP expanded remote market monitoring to all 45 markets and increased the frequency to twice a month (i.e., the first and third weeks of the month).

Agricultural Marketing Office

Department of Planning and Statistics,
Ministry of Agriculture, Forestry and Fisheries

Meach Yady meachyady@gmail.com

Website: <https://www.amis.org.kh/>

United Nations World Food Programme

Vulnerability Analysis and Mapping (VAM) Unit

Aaron Wise aaron.wise@wfp.org, Yav Long yav.long@wfp.org, Chanvibol Choer chanvibol.choeur@wfp.org, Vannareth Huoy vannareth.huoy@wfp.org

Website: <https://www.wfp.org/countries/cambodia>

Food Commodity	Unit	Average retail prices of current month	Change of retail prices compared to last month	Change of retail prices compared to last 3 months	Change of retail prices compared to same month, last year
1.1. អង្ករចម្រុះ/ Mixed Rice	Riels/Kg	2,167	▶ -0.6%	▶ 4.2%	▲ 7.7%
2.1. ត្រីផ្ទុក់(រស់)/ Snakehead fish (Live)	Riels/Kg	9,567	▲ 13.6%	▲ 9.1%	▶ -3.8%
2.2. ត្រីប្រា(រស់)/ Trey Pra (Live)	Riels/Kg	6,818	▲ 6.3%	▶ 4.3%	▼ -9.0%
2.3. ត្រីអណ្តែង(រស់)/ Cat fish (Live)	Riels/Kg	7,292	▶ 3.8%	▶ 0.2%	▼ -6.1%
2.4. ត្រីផ្ទុក់ដៀត/ Dried snake fish	Riels/Kg	25,050	▲ 5.4%	▶ 3.5%	▼ -9.7%
3.1. សាច់ជ្រូក៣ជាន់/ 3-layer pork/Pork with fat	Riels/Kg	22,156	▶ 1.1%	▶ 3.1%	▲ 13.7%
4.1. ស៊ីតទា/Duck egg (Riels/10 eggs)	Riels/10 eggs	4,583	▶ 3.8%	▶ 4.4%	▼ -12.5%
4.2. ស៊ីតទាប្រៃ/Salty/Fermented duck egg	Riels/10 eggs	6,053	▶ -0.5%	▶ 1.4%	▼ -8.6%
5.1. ប្រេងឆា/ Vegetable Oil: Saji ឬ Mongsay ឬ Cailan	Riels/ 5 litre	24,411	▶ -0.1%	▲ 7.3%	▲ 13.7%
6.1. អំបិលម៉ត់អ៊ុយត/ Iodized salt	Riels/Kg	1,198	▶ 0.1%	▲ 6.6%	▶ 3.3%
7.1. សណ្តែកដី/ Ground Nut*	Riels/Kg	9,536	▶ -4.5%	▲ 9.5%	▶ -3.1%
8.1. ត្រីកូន/ Morning glory	Riels/Kg	2,274	▼ -6.9%	▼ -21.2%	▼ -10.8%
8.2. កាបូត/ Carrot*	Riels/Kg	3,225	▶ 2.3%	▼ -6.5%	▼ -6.2%
8.3. ស្លឹកបាស/ Ivy gourd leave*	Riels/Kg	5,167	▼ -6.9%	▶ -4.5%	▲ 20.2%
8.4. ស្លឹកម្រ៊ូ/ Moringa leaves*	Riels/Kg	4,429	▲ 13.9%	▼ -9.2%	▼ -5.1%
8.5. ស្ពៃក្រញាញ់/ Chinese spinach*	Riels/Kg	3,921	▲ 24.4%	▲ 31.4%	▼ -20.4%
8.6. ស្ពៃត្នោ/ Pak Choi*	Riels/Kg	4,161	▲ 20.4%	▲ 34.0%	▼ -16.3%
8.7. ស្ពៃចង្កឹះ/Chinese flowering cabbage	Riels/Kg	2,843	▼ -7.7%	▲ 9.8%	▼ -26.2%
8.8. ស្ពៃខៀវ/Mustard Greens*	Riels/Kg	3,549	▲ 10.8%	▲ 15.6%	▼ -22.7%
8.9. ផ្លែដូង/ Amaranthus*	Riels/Kg	2,845	▼ -20.0%	▼ -15.7%	▼ -33.7%
8.10. ស្លឹកងាប់/ Ngob leaves*	Riels/Kg	5,813	▶ 4.6%	▲ 15.0%	▼ -10.6%
8.11. ត្រួយល្ពៅ/ Pumpkin leaves*	Riels/Kg	3,882	▼ -12.2%	▼ -24.2%	▼ -10.0%
8.12. ផ្លែល្ពៅ/ Pumpkin fruit*	Riels/Kg	2,035	▼ -13.4%	▼ -34.4%	▼ -18.4%
8.13. ប្លោក/ Bottle gourd*	Riels/Kg	1,600	▼ -10.7%	▼ -14.7%	▶ 0.0%
8.14. ត្រឡាច/ Wax gourd	Riels/Kg	1,970	▲ 5.5%	▼ -6.2%	▼ -22.2%
8.15. ត្រប់វែង/ Long eggplants	Riels/Kg	2,227	▶ 1.3%	▼ -26.6%	▼ -19.7%
8.16. ត្រប់ស្រយ/ Round eggplants*	Riels/Kg	2,303	▶ 1.9%	▼ -27.1%	▼ -32.4%
8.17. ប៉េងប៉ោ/ Tomatoes*	Riels/Kg	2,848	▲ 26.9%	▼ -10.2%	▼ -25.8%
8.18. ននោងមូល/ Spong gourd	Riels/Kg	2,228	▶ 4.2%	▼ -16.8%	▼ -24.3%
8.19. ននោងជ្រុង/ Ridge Gourd*	Riels/Kg	2,735	▲ 18.5%	▶ 3.9%	▼ -27.1%
8.20. ល្អងខ្ចី/ Green papaya*	Riels/Kg	1,528	▼ -10.6%	▲ 11.6%	▶ 1.5%
8.21. សណ្តែកគូរ/ Long bean	Riels/Kg	3,592	▲ 20.2%	▼ -8.3%	▼ -13.7%
8.22. ត្រឡាចចេក/ Banana flower*	Riels/Kg	3,282	▲ 6.7%	▼ -8.7%	▼ -18.2%
8.23. ផ្កាខាត់ណា/ Cauliflower*	Riels/Kg	5,711	▲ 37.5%	▲ 13.7%	▼ -10.5%
8.24. ដើមខាត់ណា/ Chinese Kale*	Riels/Kg	5,100	▲ 48.8%	▲ 22.8%	▲ 5.9%
8.25. ដំឡូងពណ៌លឿង/ Orange-flesh Sweet Potatoes*	Riels/Kg	2,364	▼ -11.4%	▼ -6.8%	▶ 1.5%

Annex 1 Change in retail prices (April 2021)

Change in the price compared to last month and last year:

- ▲ Increase when % > 5
- ▶ Stable when % between 5 and -5
- ▼ Decrease when % < -5

* Prices for these food commodities are only collected in markets in provinces where home-grown school feeding is implemented.

Food Commodity	Unit	Average wholesale prices of current month	Change of wholesale prices compared to last month	Change of wholesale prices compared to last 3 months	Change of wholesale prices compared to same month, last year
1.1. អង្ករចម្រុះ/ Mixed Rice	Riels/Kg	2,059	▶ -0.5%	▲ 6.1%	▲ 10.2%
2.1. ត្រីផ្ទុក់(រស់)/ Snakehead fish (Live)	Riels/Kg	8,743	▲ 14.5%	▲ 9.9%	▶ -3.1%
2.2. ត្រីប្រា(រស់)/ Trey Pra (Live)	Riels/Kg	6,083	▲ 5.7%	▶ 3.6%	▼ -9.7%
2.3. ត្រីអណ្តែង(រស់)/ Cat fish (Live)	Riels/Kg	6,578	▶ 3.7%	▶ -0.6%	▼ -6.1%
2.4. ត្រីផ្ទុក់ង្ងឹត/ Dried snake fish	Riels/Kg	22,694	▶ 2.1%	▶ 0.2%	▼ -13.6%
3.1. សាច់ជ្រូក៣ជាន់/ 3-layer pork/Pork with fat	Riels/Kg	20,755	▶ 0.1%	▶ 3.4%	▲ 15.0%
4.1. ស៊ីតទា/Duck egg (Riels/10 eggs)	Riels/10 eggs	4,211	▲ 5.2%	▲ 5.2%	▼ -15.5%
4.2. ស៊ីតទាប្រៃ/Salty/Fermented duck egg	Riels/10 eggs	5,624	▶ 0.0%	▶ 0.6%	▼ -11.9%
5.1. ប្រេងឆា/ Vegetable Oil: Saji ឬ Mongsay ឬ Cailan	Riels/ 5 litre	23,844	▶ -0.2%	▲ 7.8%	▲ 13.0%
6.1. អំបិលម៉ត់អ៊ុយត/ Iodized salt	Riels/Kg	998	▶ -1.6%	▲ 8.4%	▶ -1.0%
7.1. សណ្តែកដី/ Ground Nut*	Riels/Kg	8,679	▼ -5.0%	▲ 6.8%	▼ -9.6%
8.1. ត្រីកូន/ Morning glory	Riels/Kg	1,865	▶ -4.6%	▼ -22.9%	▼ -13.2%
8.2. កាបូត/ Carrot*	Riels/Kg	2,667	▶ 1.0%	▶ -2.1%	▼ -6.8%
8.3. ស្លឹកបាស/ Ivy gourd leave*	Riels/Kg	4,057	▼ -8.3%	▼ -7.3%	▲ 15.6%
8.4. ស្លឹកម្រៃ/ Moringa leaves*	Riels/Kg	3,462	▶ 0.0%	▼ -13.8%	▼ -9.7%
8.5. ស្ពៃក្រញាញ់/ Chinese spinach*	Riels/Kg	3,164	▲ 21.3%	▲ 40.3%	▼ -25.0%
8.6. ស្ពៃត្នោ/ Pak Choi*	Riels/Kg	3,491	▲ 21.8%	▲ 44.4%	▼ -18.4%
8.7. ស្ពៃចង្កឹះ/Chinese flowering cabbage	Riels/Kg	2,341	▼ -10.4%	▲ 10.3%	▼ -29.3%
8.8. ស្ពៃខៀវ/Mustard Greens*	Riels/Kg	2,868	▲ 8.0%	▲ 23.1%	▼ -25.9%
8.9. ជ្វីជ្វីង/ Amaranthus*	Riels/Kg	2,217	▼ -15.4%	▶ -3.9%	▼ -37.9%
8.10. ស្លឹកងាប់/ Ngob leaves*	Riels/Kg	4,708	▶ -0.3%	▲ 15.3%	▶ 2.1%
8.11. ត្រួយល្អៅ/ Pumpkin leaves*	Riels/Kg	3,299	▼ -15.2%	▼ -21.3%	▶ 0.6%
8.12. ផ្លែល្អៅ/ Pumpkin fruit*	Riels/Kg	1,557	▼ -14.3%	▼ -36.3%	▼ -16.9%
8.13. ប្លោក/ Bottle gourd*	Riels/Kg	1,260	▼ -15.5%	▼ -25.9%	▶ 0.0%
8.14. ត្រឡាច/ Wax gourd	Riels/Kg	1,573	▲ 10.2%	▶ -1.9%	▼ -26.7%
8.15. ត្រប់វែង/ Long eggplants	Riels/Kg	1,772	▶ 2.9%	▼ -31.3%	▼ -23.2%
8.16. ត្រប់ស្រយ/ Round eggplants*	Riels/Kg	1,716	▶ -0.3%	▼ -35.2%	▼ -36.9%
8.17. ប៉េងប៉ោ/ Tomatoes*	Riels/Kg	2,215	▲ 26.4%	▼ -13.4%	▼ -31.2%
8.18. ននោងមូល/ Spong gourd	Riels/Kg	1,919	▲ 9.8%	▼ -12.3%	▼ -21.3%
8.19. ននោងជ្រុង/ Ridge Gourd*	Riels/Kg	2,194	▲ 22.7%	▲ 8.1%	▼ -33.9%
8.20. ល្អងខ្ចី/ Green papaya*	Riels/Kg	1,222	▼ -10.6%	▲ 18.6%	▲ 6.8%
8.21. សណ្តែកគូរ/ Long bean	Riels/Kg	2,969	▲ 21.7%	▼ -10.9%	▼ -15.3%
8.22. ត្រឡាចចេក/ Banana flower*	Riels/Kg	2,833	▲ 9.0%	▼ -10.6%	▼ -19.1%
8.23. ផ្កាខាត់ណា/ Cauliflower*	Riels/Kg	4,823	▲ 32.6%	▲ 16.5%	▼ -11.8%
8.24. ដើមខាត់ណា/ Chinese Kale*	Riels/Kg	4,283	▲ 53.2%	▲ 27.1%	▶ 3.4%
8.25. ដំឡូងពណ៌លឿង/ Orange-flesh Sweet Potatoes*	Riels/Kg	1,894	▼ -18.3%	▼ -7.3%	▼ -9.8%

Annex 2 Change in wholesale prices (April 2021)

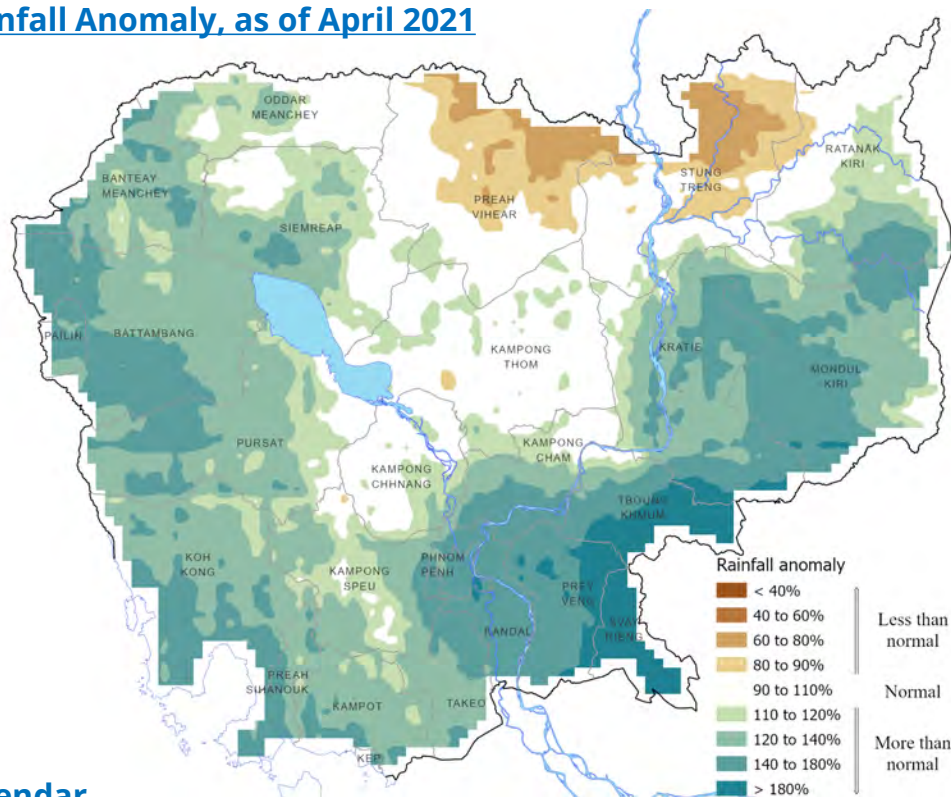
Change in the price compared to last month and last year:

- ▲ Increase when % > 5
- ▶ Stable when % between 5 and -5
- ▼ Decrease when % < -5

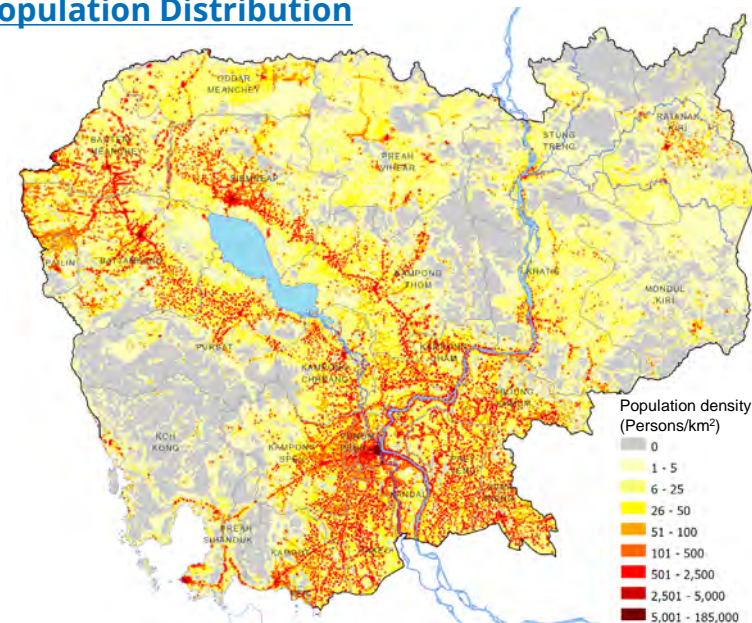
* Prices for these food commodities are only collected in markets in provinces where home-grown school feeding is implemented.

Annex 3: Rainfall anomaly, seasonal calendar, population distribution and paddy cultivation areas

3-Month Rainfall Anomaly, as of April 2021

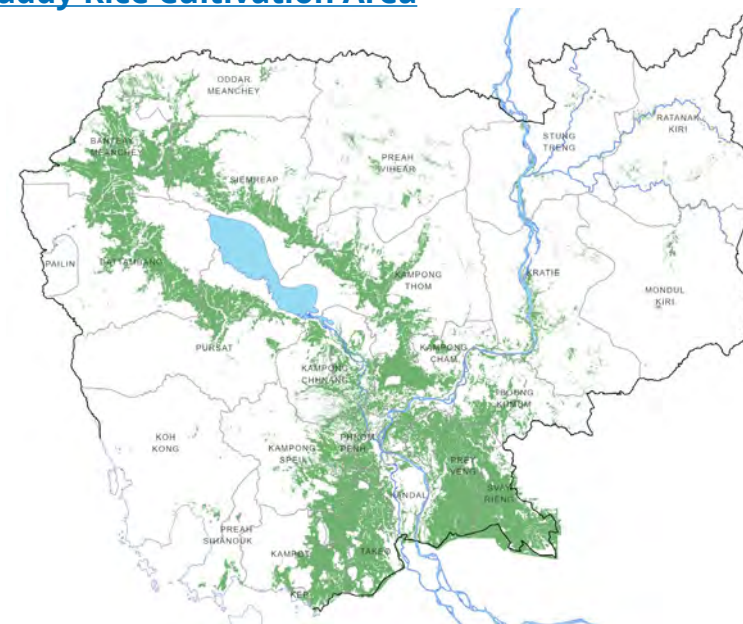


Population Distribution



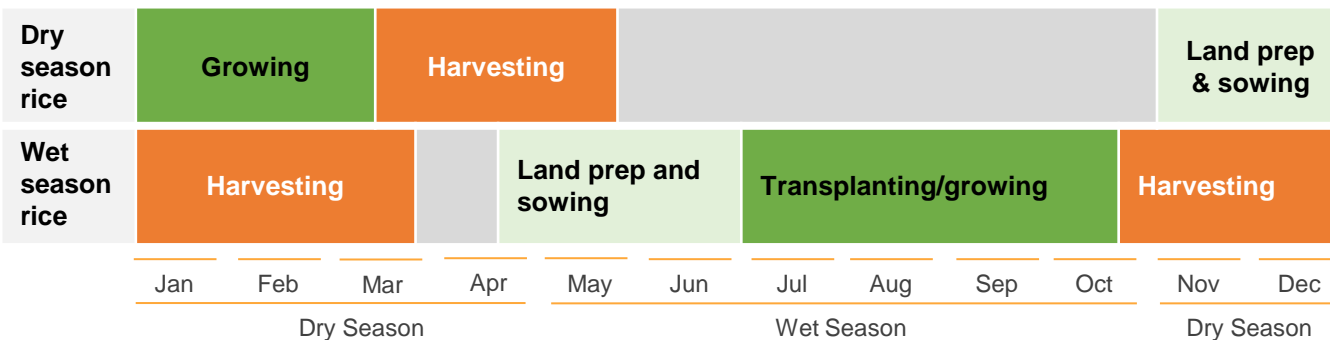
Source: LandScan™ Global, Oak Ridge National Laboratory, 2019

Paddy Rice Cultivation Area



Source: Ministry of Land Management, Urban Planning and Construction, 2008

Seasonal Calendar



Source: Preliminary Rainfall from CHIRPS and analysis by WFP Cambodia