

## EVALUATION EVIDENCE

An overview of evaluations completed in 2016–2020, contributing to the strategic priorities of WFP

# 158

evaluations completed over a five-year period

centralized evaluations

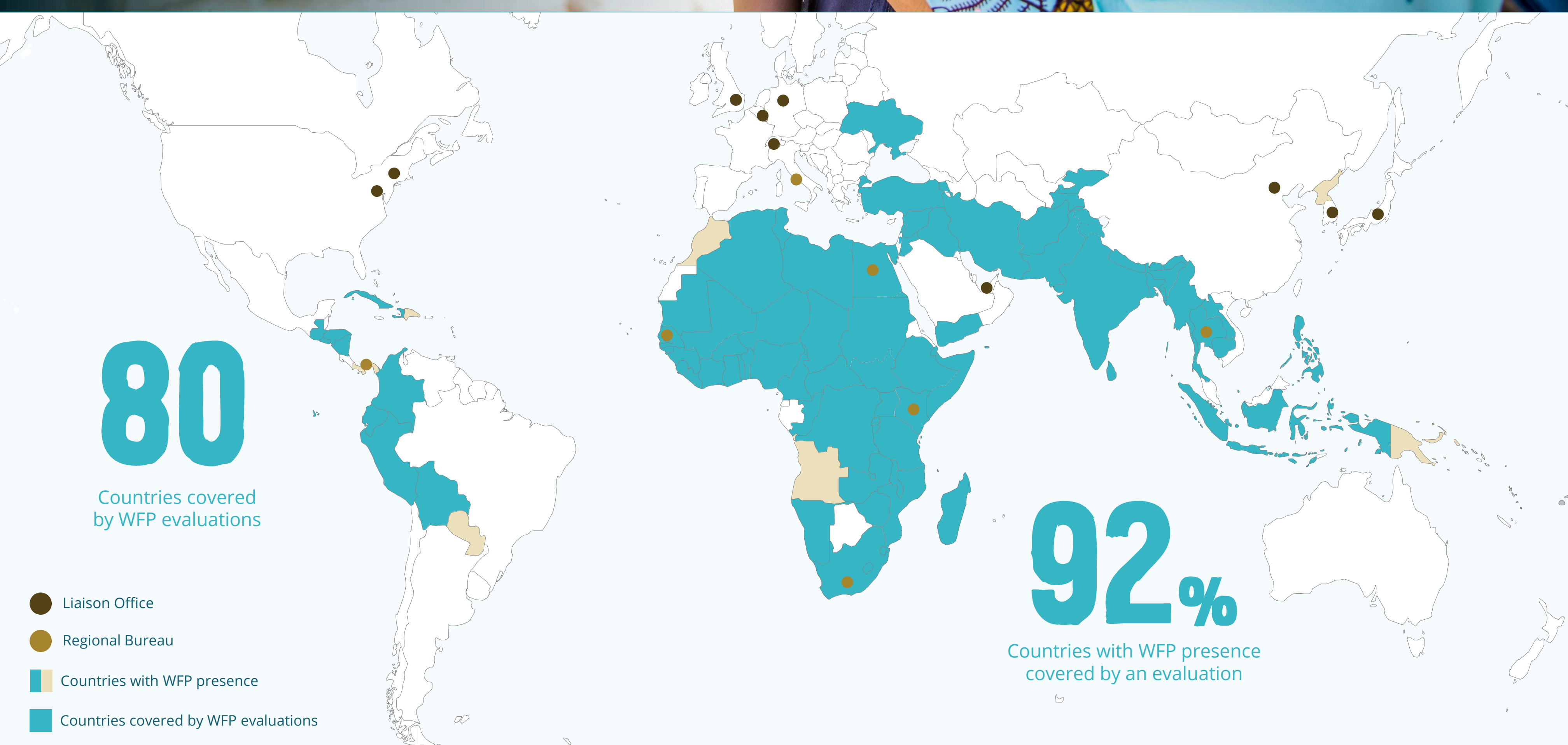
2016–2020

# 73

decentralized evaluations

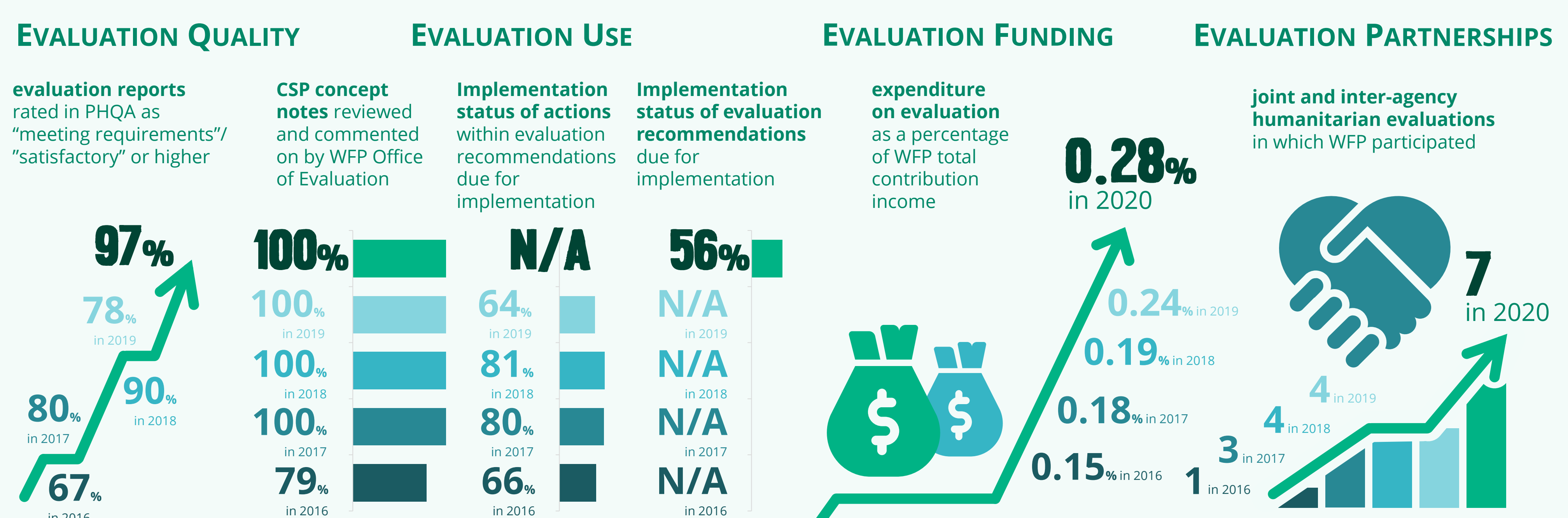
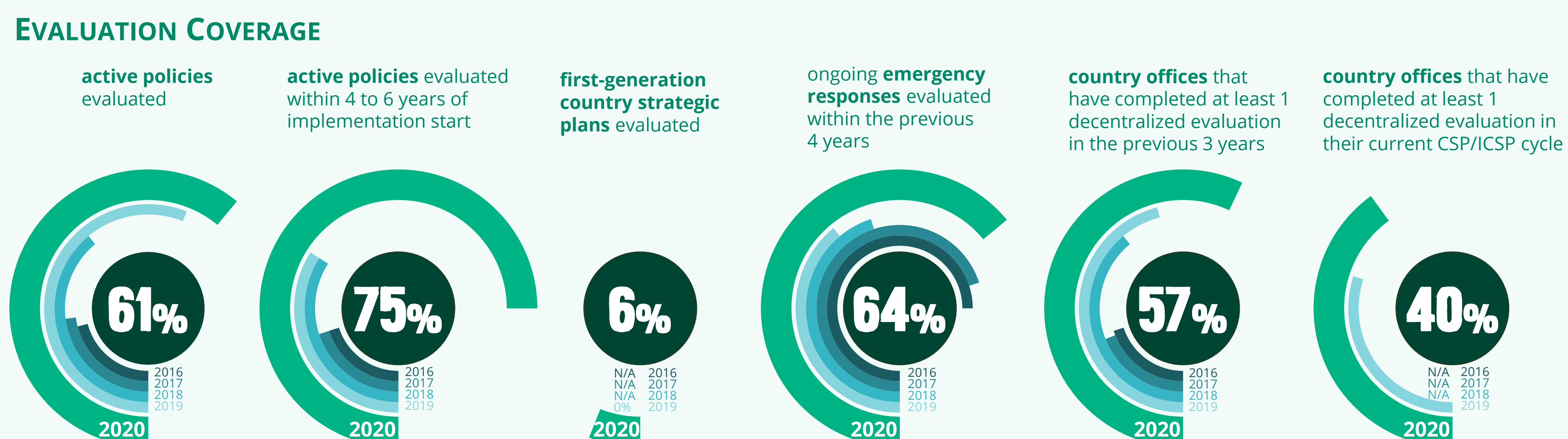
2016–2020

# 85



## EVALUATION FUNCTION

An overview of progress towards the outcomes set out in the WFP Evaluation Policy (2016–2021)



## EVALUATION PLANNING

Building on achievements so far, WFP has identified key priorities for 2021 and beyond

Updating the Evaluation Policy drawing on the recommendations of the independent peer review

Careful coordination of evaluations to maximize learning across WFP

Launching the R2 recommendation tracking system to enhance management response and follow-up

Implementing updated quality systems for all evaluation types

Strengthening capacities of the WFP evaluation cadre and expanding access to qualified evaluators

Engaging in partnerships to enhance evaluation practice and promote evidence use