



@WFP/Hussam Al Saleh

### Highlights

o The national average price of WFP's standard reference food basket decreased between March and April 2021 by two percent, reaching SYP 176,471 (USD 71 at the official exchange rate of SYP 2,500/USD).

o On 15 April 2021, the Central Bank devalued the Syrian pound from SYP 1,250/USD to SYP 2,500/USD. As a result of the devaluation, the informal Syrian pound rate strengthened by 26 percent, reaching SYP 3,146/USD leading the price of many food items to decrease.

o In April 2021, the informal national average price of transport diesel skyrocketed by 48 percent compared to March 2021 reaching SYP 2,267/litre. The informal diesel price was 12 times higher than the formal diesel price (SYP 174/litre).

o As a result of the fuel crisis in Syria, the Ministry of Internal Trade and Consumer Protection revised the price of Octane 95 petrol from SYP 1,300/litre to SYP 2,000/litre in March 2021 and further increased the price on 16 April, to reach SYP 2,500/litre.

o For further information, please contact:

Jan Michiels at  
Jan.Michiels@wfp.org

Pakinam Moussa at  
Pakinam.Moussa@wfp.org

### Standard Food Basket

In April 2021, the national average price of a standard reference food basket<sup>1</sup> decreased by two percent compared to March 2021, reaching SYP 176,471. The national average food basket price was 100 percent higher than that of October 2020 (six months ago) and was 247 percent higher compared to April 2020 (Figure 1). This is the first month-on-month (m-o-m) decrease in the food basket price since August 2020, and it is linked to the improvement in the informal exchange rate by 26 percent between March and April 2021.

M-o-m, eight governorates recorded a decreasing average reference food basket price in April 2021. The highest m-o-m decrease of 17 percent was reported in Idleb reaching SYP 183,563, followed by Al-Hasakeh (down 16 percent), reaching SYP 127,870. The remaining six governorates recorded an increasing reference food basket price. The highest increase of 11 percent was reported in Damascus reaching SYP 181,118, followed by Rural Damascus (up nine percent) reaching SYP 180,589.

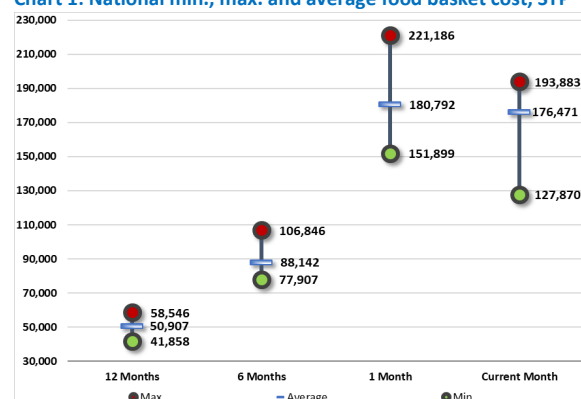
Year-on-year (y-o-y), the price of the reference food basket has significantly increased across all 14 governorates. Deir-ez-Zor recorded the highest increase (up 301 percent), while Al-Hasakeh recorded the lowest increase (up 165 percent).

The gap between the highest and lowest average food basket prices shrank by five percent from SYP 69,288 in March 2021 to SYP 66,013 in April 2021 (Chart 1). However, the gap increased by 296 percent since April 2020 highlighting continued supply chain disruptions across the country since last year, driven by increased fuel cost and an extremely volatile informal exchange rate.

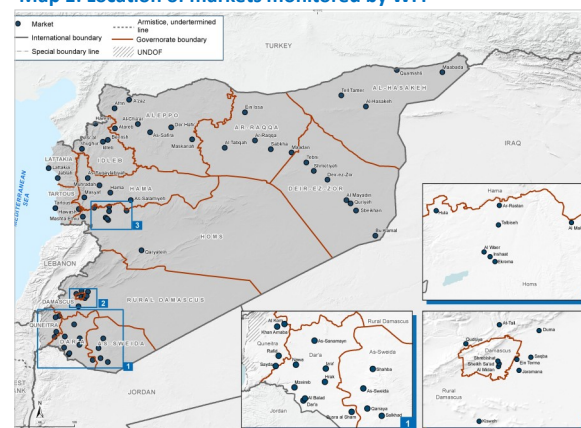
Figure 1: Food basket cost and changes, SYP

Governorate	Price April 2021	1 month change	6 months changes	12 months changes
Aleppo	SYP 175,996	-7%	98%	278%
Damascus	SYP 181,118	11%	116%	258%
Dar'a	SYP 181,283	3%	105%	258%
Deir-ez-Zor	SYP 167,827	6%	115%	301%
Hama	SYP 170,200	-9%	101%	191%
Al-Hasakeh	SYP 127,870	-16%	51%	165%
Homs	SYP 170,315	-9%	101%	192%
Idleb	SYP 183,563	-17%	72%	238%
Lattakia	SYP 186,989	-5%	106%	258%
Ar-Raqqa	SYP 188,775	8%	129%	284%
Rural Damascus	SYP 180,589	9%	110%	253%
As-Sweida	SYP 183,169	3%	106%	240%
Tartous	SYP 193,883	-2%	106%	278%
Quneitra	SYP 179,022	-3%	96%	295%
Average	SYP 176,471	-2%	100%	247%

Chart 1: National min., max. and average food basket cost, SYP



Map 1: Location of markets monitored by WFP



1. The standard food basket is a group of essential food commodities. In Syria, the food basket is set at a group of dry goods providing 2,060 kcal a day for a family of five during a month. The basket includes 37 kg bread, 19 kg rice, 19 kg lentils, 5 kg of sugar, and 7 litres of vegetable oil.

Fuel Crisis  
Overview

Syria has been dealing with a shortage of fuel to meet its needs since late 2018. The shortage in fuel is a result of many factors. In addition to the continued multilateral coercive measures on Syria, fuel is in short supply in Syria as many of the country’s oil fields are not controlled by the Syrian Government. The situation got more severe from January 2021 onwards when fuel supplies coming from Northeast Syria were temporarily paused by the Syrian Democratic Forces. Moreover in early March 2021, a fuel refinery and market were attacked in northern Aleppo, the main entry point of fuel into the Government of Syria controlled area from Northeast Syria. Between 200 and 300 fuel trucks were destroyed in this attack. Moreover the Suez Canal blockage in mid-March 2021 also meant that scheduled sea arrivals of fuel into Syria were delayed by over two weeks. As a result of limited availability and access to fuel, the Syrian Government implemented a series of measures to ensure managed distribution and use of the limited fuel supplies it had. This led to heavy queues at petrol stations and has severely affected the smooth running of many businesses and services. The situation became so difficult that side jobs were created as many people left their cars with roadside caretakers who would wait in the queues instead of them and look after the vehicles. In most governorates, not all stations were functioning, and the waiting times ranged from three hours in Quneitra to three days in As-Sweida.

Petrol

Since April 2019 Syria has been further rationing access to fuel due to its limited supply as a result of the intensification of multilateral coercive measures in November 2018. Since April 2019 car owners were allocated 20 litres per day at a subsidised rate. This changed to 100 litres per month by mid-2020, and by January 2021, the Syrian government announced 75 litres were to be allocated per household per month.

As a result of the subsequent fuel supply shocks in the first quarter of 2021, by end-March 2021 the Syrian government limited allocations to 20 litres every 7 days and has since (in May) allowed 25 litres of fuel allocation per household every seven days up to the limit of 75 litres per month per household. To manage the queues, the government set up an SMS system where registered citizens would receive an SMS every seven days confirming their 20 litres were ready and indicating the petrol station and the time they could refuel. This system was further confirmed through the use of the fuel smart card, which once used would start the timer for the next allocation message to be sent seven days later.

The price of subsidised petrol has also changed due to the short supply of fuel as well as due to inflation. Octane 90 petrol subsidised price was sold at SYP 250/litre in early 2019 and Octane 95 petrol (not subsidised) was sold at SYP 600/litre. This increased to SYP 750/litre for Octane 90 and SYP 2,500/ litre for Octane 95. The allocation of 25 litres every seven days was set for Octane 90 fuel while Octane 95 had a limit of 30 litres every seven days for all of April and part of May 2021, but the allocation limit for Octane 95 has been removed since mid-May. Also from April to mid-May 2021 only private vehicles with an engine above 2,000 cc. could refuel with Octane 95. This restriction has been recently removed for all privately owned vehicles while public transport vehicles such as taxis and public buses are still restricted from accessing this fuel. Furthermore, it is important to mention that petrol stations providing Octane 95 fuel are limited in number across Syria. For example, in Aleppo there is only one such petrol station and during the peak of the petrol crisis it was serviced infrequently, being open for one day and shut for the subsequent three to four days, depending on availability of fuel. Petrol stations with Octane 90 and/or Octane 95 have been operating on a daily basis since mid-May as the Syrian Government agreed a deal with the Kurdish Administration for provision of petrol from Northeast Syria and received more shipments via the sea ports, hereby increasing the supply of fuel in the country and easing the pressure on petrol stations, at least temporarily.

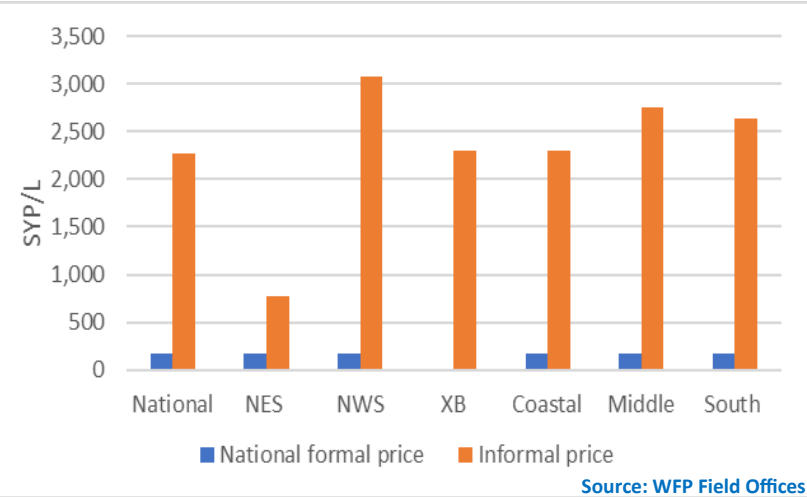
The informal price for Octane 90 was at SYP 1,200/litre in April 2019 and reached between SYP 2,000 to 4,000/litre by May 2021. While prices for Octane 95, which is readily available in the market, are aligned with the formal price (SYP 2,500), the smuggled Octane 98 petrol from Lebanon is sold at SYP 2,400 but only available close to the Lebanese border with Syria.

Diesel

The first recent decrease in diesel fuel allocations was in January 2021 (24 percent reduction in diesel). In February, the ministry announced that around 60 percent of Syrians had not received their fuel allocations for 2021, and heating diesel allocations had been halved from 400 litres/family to 200 litres/family. Even though the heating diesel allocation for families is officially 200 litres, it has been reduced to 100 litres de facto in many governorates.

In April 2021, the informal national average price of transport diesel skyrocketed by 48 percent compared to March 2021 and by 452 percent since April 2020 reaching SYP 2,267/litre. Moreover, the informal price remains 12 times higher than the formal price (SYP 174/litre) - Chart 2. Subsidized diesel for heating and transportation remained at SYP 180/litre in government-controlled areas (even though it usually ranges between SYP 180 - SYP 200/litre because of the added service fees at some stations). Subsidized diesel for bakeries was steady at SYP 135/litre, and unsubsidized diesel price for industrial and commercial use remained at SYP 650/litre.

Chart 2: Formal and informal transport diesel prices, SYP\*



\*No formal prices have been reported in the cross-border region because there is no subsidized diesel or butane gas in the region.

**Legend on regions of analysis:** 'Northwest'=Aleppo; 'Cross-border'=Idleb & Aleppo [A'zaz, Atarib & Afrin]; 'Coastal'=Lattakia & Tartous; 'Northeast'=Ar-Raqqqa, Al-Hasakeh & Deir-ez-Zor; 'Middle'=Damascus, Rural Damascus, Hama, Homs and Idleb [Senjar]; 'South'=Dar'a, As-Sweida & Quneitra.

## Staple cereals retail prices

### Wheat Flour

M-o-m, the national average retail price of wheat flour decreased by two percent throughout Syria in April 2021, reaching SYP 1,940/kg. Nevertheless, the wheat flour price was up by 221 percent y-o-y. As-Sweida recorded the highest wheat flour price at SYP 2,292/kg (up 12 percent m-o-m), while Idleb recorded the lowest price at SYP 1,453/kg (down 20 percent m-o-m).

Broken down by regions, northwest Syria recorded the highest retail price at SYP 2,361/kg (up six percent m-o-m), followed by the coastal region at SYP 2,094/kg (down two percent m-o-m). Conversely, the cross-border region recorded the lowest retail price at SYP 1,387/kg (down 18 percent m-o-m), followed by northeast Syria at SYP 1,743/kg (down four percent m-o-m) - Chart 3.

### Rice

M-o-m, the national average retail price of Egyptian white rice decreased by two percent reaching SYP 2,695/kg in April 2021. Nevertheless, the price of Egyptian white rice was up by 168 percent y-o-y. Quneitra recorded the highest price at SYP 3,078/kg (down six percent m-o-m), while Al-Hasakeh recorded the lowest price at SYP 2,146/kg (down 15 percent m-o-m).

M-o-m, the southern region recorded the highest price at SYP 2,955/kg (down two percent m-o-m), followed by the coastal region at SYP 2,794/kg (down eight percent m-o-m). While northeast Syria recorded the lowest price at SYP 2,545/kg (unchanged m-o-m), followed by the middle region at SYP 2,609/kg (unchanged m-o-m) - Chart 4.

### Bulgur

The national average retail price of bulgur increased by one percent m-o-m, and by 170 percent y-o-y, reaching SYP 2,067/kg. As-Sweida recorded the highest bulgur retail price at SYP 2,500/kg (up 12 percent m-o-m), while Idleb recorded the lowest price at SYP 1,484/kg (down nine percent m-o-m).

The coastal region recorded the highest average bulgur price by region at SYP 2,275/kg (down three percent m-o-m), followed by the southern region at SYP 2,265/kg (up 12 percent m-o-m). The cross-border region recorded the lowest average bulgur price at SYP 1,469/kg (down 16 percent m-o-m), followed by northeast Syria at SYP 1,820/kg (down four percent m-o-m) - Chart 5.

### Bread\*\*

The national average price of subsidized bread in April 2021 reached SYP 120/bundle (up one percent m-o-m and 132 percent y-o-y). The increase is due to the increased fees charged by agents as a result of the increased transport cost.

Moreover, commercial bread price decreased by six percent m-o-m but increased by 129 percent y-o-y, reaching SYP 1,596/bundle. As-Sweida recorded the highest average commercial bread price at SYP 2,366/bundle (up 20 percent m-o-m), while Hama and Homs recorded the lowest average price of SYP 800/bundle (down nine and 55 percent m-o-m, respectively).

Broken down by regions, northwest Syria recorded the highest average commercial bread price of SYP 2,142/bundle (up four percent m-o-m), followed by the southern region at SYP 2,101/bundle (up nine percent m-o-m). Conversely, the coastal region recorded the lowest price of SYP 1,194/bundle (down eight percent m-o-m), followed by the middle region at SYP 1,398/bundle (down 17 percent m-o-m).

Chart 3: Retail Prices of Wheat Flour, SYP

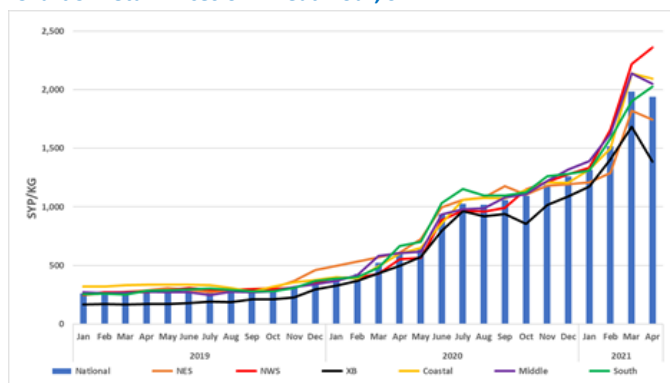


Chart 4: Retail Prices of Rice, SYP

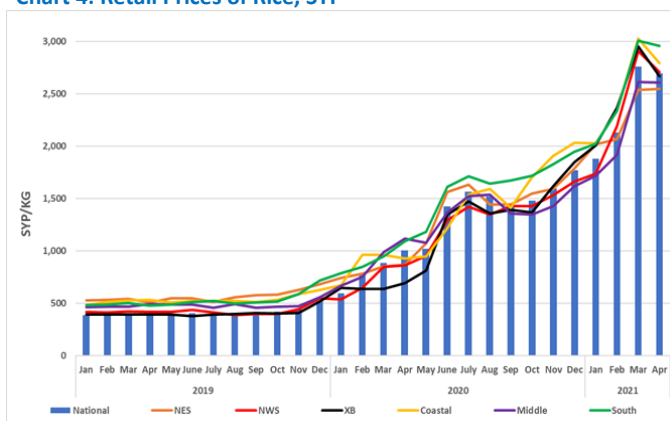


Chart 5: Retail Prices of Bulgur, SYP

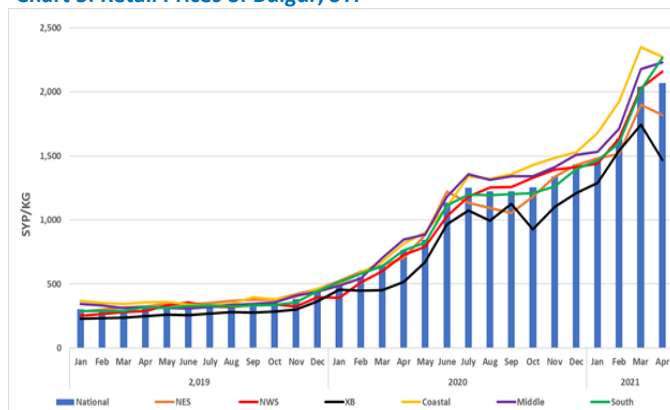
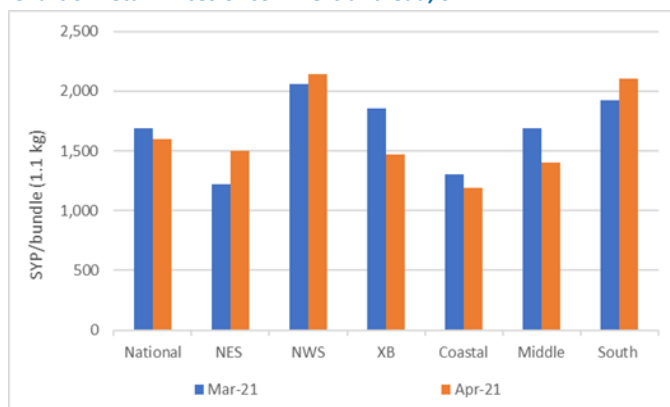


Chart 6: Retail Prices of commercial bread, SYP



Source: WFP Field Offices

\*\*Starting from March 2021, WFP-monitored commercial bread has been updated from resold public bread bundles in shops to commercial bread sold at shops. Prices for the past year have been adjusted to include commercial bread resold from shops. Moreover, all prices have been adjusted to reflect bread bundle size of 1.1 kg instead of 1.3 kg since November 2020.



### Exchange rate

The informal exchange rate strengthened in April 2021 as the Syrian pound gained 26 percent of its value reaching SYP 3,146/USD. However, compared to a year ago, the Syrian pound has significantly depreciated by 60 percent. The strengthening of the informal exchange rate is believed to be linked to the devaluation of the official Syrian pound rate from SYP 1,250/USD to SYP 2,500/USD on 15 April 2021. This is the third devaluation of the Syrian pound since November 2019.

The highest informal exchange rate was reported in Damascus, Deir-ez-Zor, Hama and Homs at 3,175/USD (all appreciated by 27 percent m-o-m except in Deir-ez-Zor by 29 percent). Conversely, the lowest rates were reported in Al-Hasakeh at SYP 3,105/USD (appreciated by 24 percent m-o-m), and Ar-Raqqa at SYP 3,108/USD (appreciated by 25 percent m-o-m).

### Butane gas prices

In April 2021, the formal butane gas cylinder price (25,000 L) increased by 16 percent m-o-m due to added transport cost and other fees by agents. One butane gas cylinder on the formal market was priced at SYP 4,079/refill.

The informal national average price of one butane gas cylinder (25,000 L) has also increased by eight percent m-o-m and by 123 percent since April 2020 reaching SYP 28,643/refill in April 2021. Hama recorded the highest price at SYP 35,828/refill (up seven percent m-o-m), while Al-Hasakeh recorded the lowest price at SYP 11,417 (up ten percent m-o-m).

Broken down by regions, northwest Syria recorded the highest informal refill price at SYP 35,094/refill (up 35 percent m-o-m), followed by the cross-border region at SYP 33,997/refill (down 15 percent m-o-m). While, northeast Syria recorded the lowest price at SYP 20,997/refill (up 22 percent m-o-m), followed by the southern region at SYP 28,711/refill (up 19 percent m-o-m).

### Vegetables retail prices

The national average price of potatoes continued to increase, going up by 16 percent m-o-m and by 87 percent y-o-y, reaching SYP 1,002/kg in April 2021. The coastal region recorded the highest price at SYP 1,163/kg (up nine percent m-o-m), followed by the middle region at SYP 1,162/kg (up 18 percent m-o-m). Conversely, the cross-border region recorded the lowest price at SYP 685/kg (down 16 percent m-o-m), followed by northeast Syria at SYP 881/kg (up 17 percent m-o-m).

The national average price of onions increased by 17 percent m-o-m and by 42 percent y-o-y, reaching SYP 1,190/kg. The coastal region recorded the highest price at SYP 1,856/kg (up 26 percent m-o-m), followed by the southern region at SYP 1,578/kg (up 50 percent m-o-m). Conversely, northwest Syria recorded the lowest price at SYP 579/kg (down 36 percent m-o-m), followed by the cross-border region at SYP 717/kg (down 25 percent m-o-m).

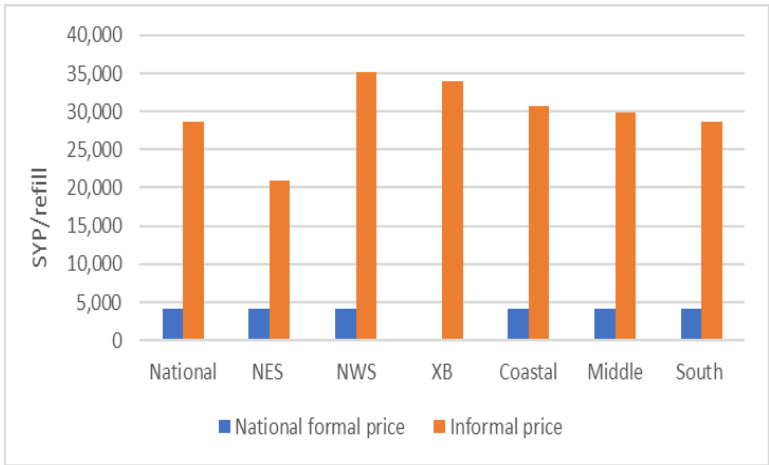
The national average price of carrots increased by 14 percent m-o-m and by 230 percent y-o-y, reaching SYP 910/kg. Northeast Syria recorded the highest price at SYP 1,036/kg (up 23 percent m-o-m), followed by the middle region at SYP 1,002/kg (up 14 percent m-o-m). The southern region recorded the lowest price at SYP 721/kg (up 20 percent m-o-m), followed by northwest Syria at SYP 771/kg (up 32 percent m-o-m).

Table 1: Informal market exchange rate, 1 USD to SYP

Governorate	April 2021	% change (m-o-m)	% change (y-o-y)
Aleppo	3,171	25%	-60%
Al-Hasakeh	3,105	24%	-59%
Ar-Raqqa	3,108	25%	-60%
As-Sweida	3,140	28%	-61%
Damascus	3,175	27%	-60%
Dar'a	3,120	28%	-60%
Deir-ez-Zor	3,175	29%	-59%
Hama	3,175	27%	-60%
Homs	3,175	27%	-60%
Idleb	3,111	24%	-60%
Lattakia	3,170	25%	-60%
Quneitra	3,115	28%	-60%
Rural Damascus	3,135	28%	-60%
Tartous	3,170	25%	-60%
National average	3,146	26%	-60%
Official rate	2,500	-50%	-72%

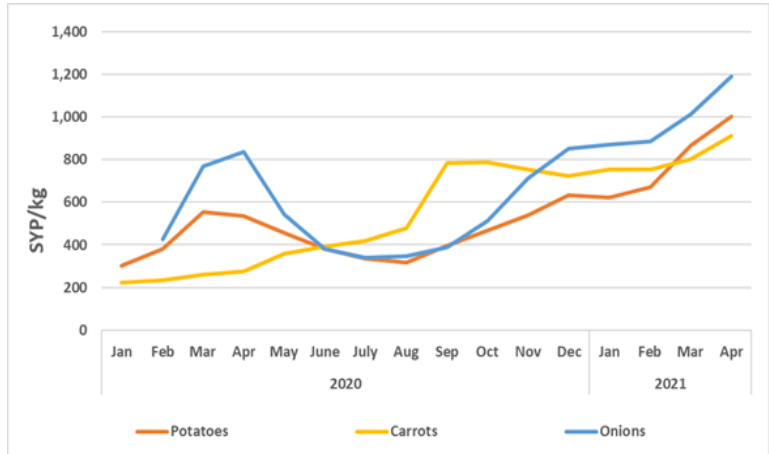
Source: WFP field offices

Chart 7: Formal and informal butane gas cylinder prices, SYP\*



Source: WFP

Chart 8: Retail vegetables prices, SYP



\*No formal prices have been reported in the cross-border region because there is no subsidized diesel or butane gas in the region.

## Terms of Trade (ToT)<sup>2</sup>

### ToT between wage labour and wheat flour

The national non-skilled labour wage, representing construction, off-loading and agricultural labour, averaged SYP 6,191/day (up seven percent m-o-m) in April 2021. Moreover, the wage rate was 107 percent above its y-o-y level and 40 percent above levels recorded in October 2020 - Chart 9.

Idleb recorded the highest daily wage rate at SYP 9,053/day (down two percent m-o-m), while Deir-ez-Zor recorded the lowest daily wage rate at SYP 3,464/day (up 21 percent m-o-m). Broken down by regions, the coastal region recorded the highest wage rate of SYP 7,875/day (down one percent m-o-m). On the other hand, northeast Syria recorded the lowest wage rate of SYP 4,766/day (up eight percent m-o-m).

The national average ToT between wheat flour and wage labour, a proxy indicator for purchasing power, increased by nine percent between March and April 2021, reaching 3.2 kg of wheat flour/daily wage compared to 2.9 kg of wheat flour in March 2021.

However, the national average ToT between wheat flour and wage labour decreased by 36 percent compared to October 2020 (six months ago) and by 21 percent compared to April 2020. In other words, the national average daily wage of a non-skilled labourer could buy 3.2 kg of wheat flour in April 2021 compared to four kg in October 2020, and five kg in April 2020.

Broken down by regions, the cross-border region recorded the highest ToT at 5.5 kg (up six percent m-o-m). While northeast Syria recorded the lowest ToT at 2.7 kg (up 13 percent m-o-m).

### ToT between sheep and wheat flour

The national average price of a two-year old alive male sheep increased by seven percent m-o-m and by 112 percent y-o-y, reaching SYP 536,346/sheep in April 2021 (Chart 11).

Homs and Hama recorded the highest price of a two-year old alive male sheep at SYP 600,000/head (up 16 percent m-o-m), while Lattakia recorded the lowest price at SYP 473,000/head (up five percent m-o-m).

Broken down by regions, the middle region recorded the highest average price across Syria at SYP 591,087/sheep (up 14 percent m-o-m), followed by the southern region at SYP 523,906/sheep (up two percent m-o-m). While the coastal region recorded the lowest price at SYP 474,188/sheep (up five percent m-o-m), followed by the cross-border region at SYP 479,529/sheep (down seven percent m-o-m).

In April 2021, the ToT between an alive two-year old male sheep and wheat flour was 276 kg/sheep (up ten percent m-o-m). Highlighting an improvement in the exchange for livestock owners who could buy on average ten percent more of wheat flour compared to a month earlier. However, the ToT has worsened by 34 percent since April 2020.

Broken down by regions, the cross-border region recorded the highest ToT at 346 kg/sheep (up 12 percent m-o-m), followed by northeast Syria at 296 kg/sheep (up 20 percent m-o-m). On the other hand, northwest Syria recorded the lowest ToT at 211 kg/sheep (down seven percent m-o-m), followed by the coastal region at 226 kg/sheep (up seven percent m-o-m).

Chart 9: Daily wage for unskilled labour, SYP

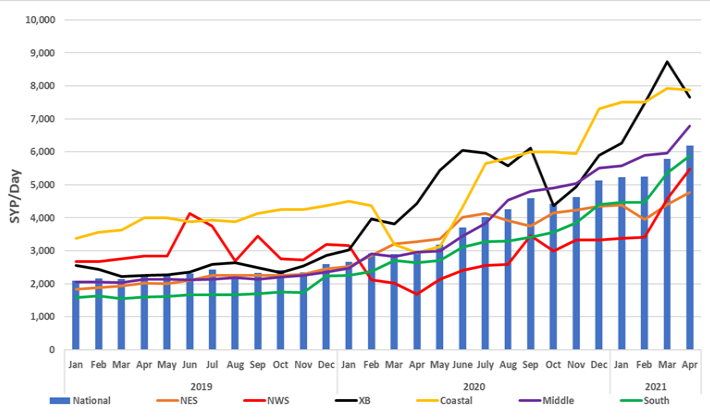


Chart 10: Terms of Trade (ToT) between wheat flour and wage rate

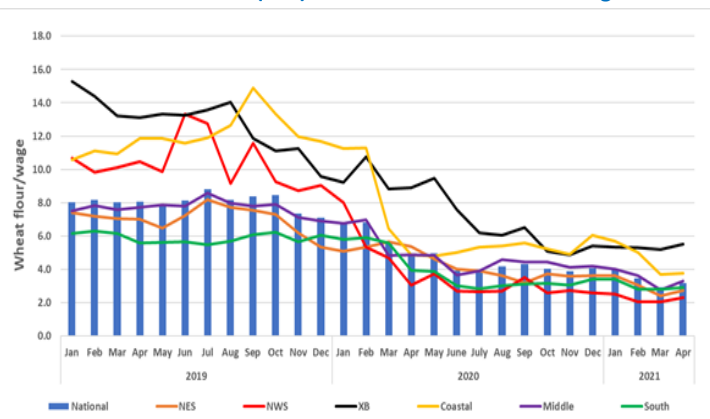


Chart 11: Price of livestock, SYP/one 2Y old sheep

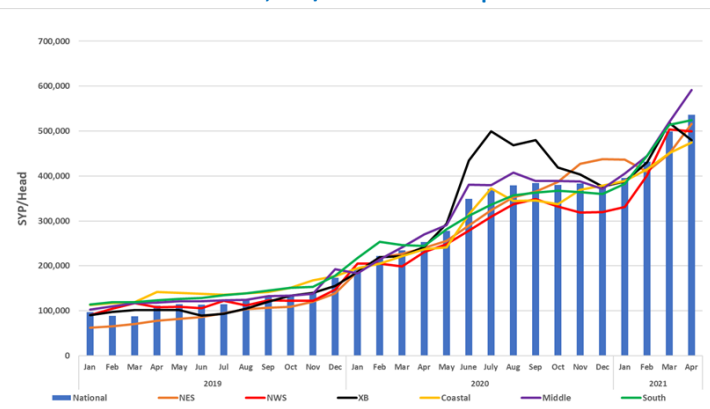
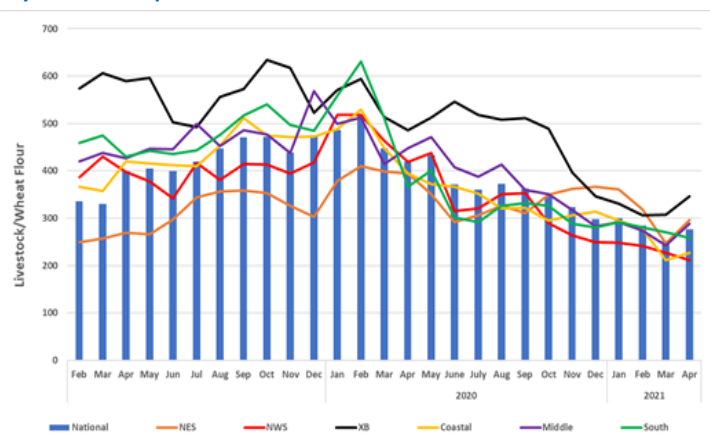


Chart 12: Terms of Trade (ToT) between wheat flour and the price of a 2 year old sheep



Source: WFP

2. The ToT are proxy indicators of the purchasing power of households that rely on livestock and/or casual labour as their main source of income for the purchase of cereals from local markets. ToT are important components of food security analysis. Changes in the terms of trade between wages/livestock and staple food commodities are indicative of the trends in purchasing power and the impact on the food security situation of households dependent on food purchases through income from daily wage labour and/or the sale of livestock.

## COVID-19 NFIs

Table 2: Prices of key COVID-19 items, week-on-week in April 2021, SYP

National average	Week 1 (SYP)	Week 2 (SYP)	Week 3 (SYP)	Week 4 (SYP)	% Change (April W4&W1)
Surgeon mask	379	377	376	368	-3%
Gloves (pair)	501	513	513	508	1%
Alcohol spray (200 ml)	2,218	2,226	2,175	2,157	-3%
Bleach bottle (L)	1,494	1,450	1,461	1,421	-5%
Hand gel (50 ml)	1,133	1,143	1,141	1,141	1%
Soap bar	545	544	548	546	0%

Between March and April 2021, the price of all monitored COVID-19 items has increased except surgeon masks and bleach. The price of surgeon masks decreased by four percent m-o-m to reach SYP 375/mask, and the price of bleach remained unchanged m-o-m at SYP 1,456/litre.

The price of soap bars and hand gel increased by one and two percent reaching SYP 546/bar and SYP 1,140/50 ml, respectively. Moreover, the price of alcohol spray and plastic gloves increased by five and seven percent reaching SYP 2,194/200 ml and SYP 509/pair, respectively.

Compared to October 2020 (six months ago), the price of surgeon masks, bleach and soap bars increased by nine, 36 and 53 percent, respectively. Moreover, the price of hand gel, alcohol spray and plastic gloves increased by 22, 40 and 55 percent.

Additionally, the price of all items have increased in April 2021 compared to February 2020 (prior to the COVID-19 outbreak in Syria). The price of bleach, soap bars and surgeon masks have increased by 250, 266 and 375 percent, respectively. Also, the price of hand gel, alcohol spray and plastic gloves increased by 373, 425 and 659 percent, respectively.

## Key food-items retail prices

### Vegetable oil

M-o-m, the national average retail price of vegetable oil throughout Syria decreased by eight percent after a significant increase last month reaching SYP 7,591/litre. However, vegetable oil's national average price has increased by 121 percent since October 2020 (six months ago) and by 176 percent since April 2020.

As-Sweida recorded the highest vegetable oil price at SYP 8,710/litre (down three percent m-o-m), while Al-Hasakeh recorded the lowest price at SYP 5,433/litre (down 21 percent m-o-m).

Broken down by regions, the southern region recorded the highest price at SYP 8,384/litre (down seven percent m-o-m), followed by the coastal region at SYP 8,175/litre (down ten percent m-o-m). While the cross-border region recorded the lowest price of vegetable oil at SYP 5,575/litre (down 11 percent m-o-m), followed by northeast Syria at SYP 6,752/litre (down one percent m-o-m).

### Red Split Lentils

In April 2021, the national average retail price of red split lentils continued to increase by eight percent m-o-m reaching SYP 2,826/kg. The national average price also increased by 99 percent since October 2020 (six months ago) and by 110 percent since April 2020. Ar-Raqqa recorded the highest red split lentils price at SYP 3,978/kg (up 31 percent m-o-m), while Al-Hasakeh recorded the lowest price of SYP 1,923/kg (down 12 percent m-o-m).

Broken down by regions, the coastal region recorded the highest price of SYP 3,388/kg (up seven percent m-o-m), followed by northwest Syria at SYP 3,378/kg (up five percent m-o-m). Conversely, the cross-border region recorded the lowest price at SYP 2,517/kg (down 13 percent m-o-m), followed by northeast Syria at SYP 2,694/kg (up three percent m-o-m).

Table 3: Monthly price changes of key COVID-19 items, SYP

National average	Feb-20 (SYP)	Apr-21 (SYP)	% Change
Surgeon mask	79	375	375%
Gloves (pair)	67	509	659%
Alcohol spray (200 ml)	418	2,194	425%
Bleach bottle (L)	416	1,456	250%
Hand gel (50 ml)	241	1,140	373%
Soap bar	149	546	266%

Source: WFP

Chart 13: Retail Prices of Vegetable Oil, SYP

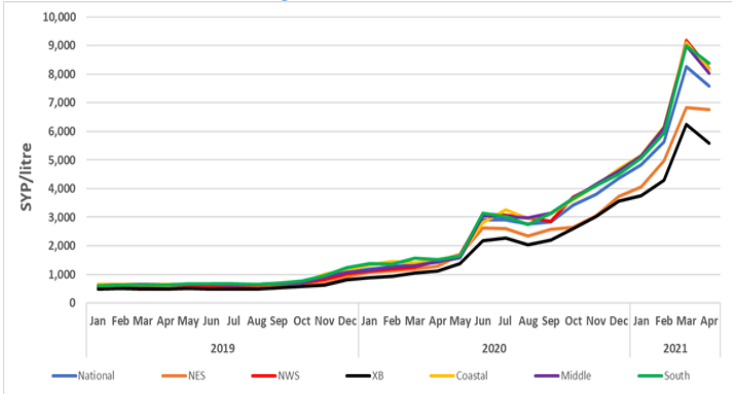
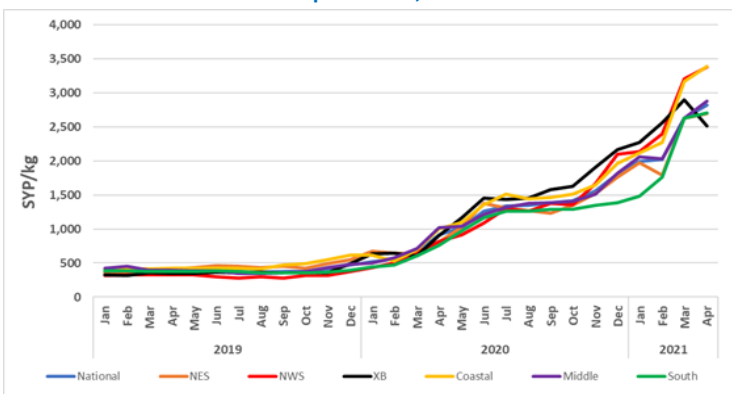


Chart 14: Retail Prices of Red Split Lentils, SYP



Source: WFP



Table 4. Market Price of Main Commodities in Syrian Pounds: April 2021																		
Commodity	Governorate	Current Price	Price change	Price change	Price change	Average Change	Average Change	Average Change	Commodity	Governorate	Current Price	Price change	Price change	Price change	Average Change	Average Change	Average Change	
			1M (%)	6 M (%)	12 M (%)	1M	6 M	12 M				1M (%)	6 M (%)	12 M (%)	1M	6 M	12 M	
Bread Public (1.1 kg)	Aleppo	127	2	202	182	↗	↑	↑	Dates (kg)	Aleppo	4,755	-10	15	157	↓	↗	↑	
	Damascus	103	-4	143	111	↓	↑	↑		Damascus	5,412	5	32	162	↗	↑	↑	
	Dar'a	131	-7	145	135	↓	↑	↑		Dar'a	5,770	12	53	166	↗	↑	↑	
	Deir-ez-Zor	168	1	127	87	↗	↑	↑		Deir-ez-Zor	2,917	-	5	70	↔	↗	↑	
	Hama	100	-	136	136	↔	↑	↑		Hama	5,526	2	40	191	↗	↑	↑	
	Al-Hasakeh	100	-	89	136	↔	↑	↑		Al-Hasakeh	4,023	-5	44	187	↓	↑	↑	
	Homs	100	-	136	136	↔	↑	↑		Homs	5,526	2	40	191	↗	↑	↑	
	Idleb	NA*	-	-	-	↔	↔	↔		Idleb	4,433	-12	80	212	↓	↑	↑	
	Lattakia	100	-	136	110	↔	↑	↑		Lattakia	4,875	-11	7	90	↓	↗	↑	
	Quneitra	145	5	245	242	↗	↑	↑		Quneitra	4,733	-8	33	133	↓	↑	↑	
	Ar-Raqqa	122	9	66	70	↗	↑	↑		Ar-Raqqa	4,296	4	46	255	↗	↑	↑	
	Rural Damascus	100	-	66	82	↔	↑	↑		Rural Damascus	5,375	6	52	176	↗	↑	↑	
	As-Sweida	100	-	136	136	↔	↑	↑		As-Sweida	6,142	7	73	277	↗	↑	↑	
	Tartous	150	1	255	136	↗	↑	↑		Tartous	7,000	10	82	175	↗	↑	↑	
Bread Shop (1.1 kg)	Aleppo	1,694	-12	71	157	↓	↑	↑	Diesel (parallel market, L)	Aleppo	2,677	25	146	373	↗	↑	↑	
	Damascus	2,165	4	64	337	↗	↑	↑		Damascus	2,681	65	305	688	↑	↑	↑	
	Dar'a	1,953	4	137	223	↗	↑	↑		Dar'a	2,553	55	199	513	↑	↑	↑	
	Deir-ez-Zor	1,283	9	NA	NA	↗	↔	↔		Deir-ez-Zor	1,169	63	234	282	↑	↑	↑	
	Hama	800	-9	-27	45	↓	↓	↑		Hama	3,000	63	300	650	↑	↑	↑	
	Al-Hasakeh	1,385	19	51	152	↗	↑	↑		Al-Hasakeh	229	-	53	53	↔	↑	↑	
	Homs	800	-55	-27	45	↓	↓	↑		Homs	3,000	65	300	650	↑	↑	↑	
	Idleb	1,408	-23	56	202	↓	↑	↑		Idleb	2,462	-13	81	239	↓	↑	↑	
	Lattakia	1,250	-5	NA	NA	↓	↔	↔		Lattakia	2,300	65	283	466	↑	↑	↑	
	Quneitra	2,160	8	20	20	↗	↗	↗		Quneitra	2,534	88	327	624	↑	↑	↑	
	Ar-Raqqa	1,731	27	NA	NA	↑	↔	↔		Ar-Raqqa	724	7	194	210	↗	↑	↑	
	Rural Damascus	2,095	4	59	323	↗	↑	↑		Rural Damascus	2,394	51	343	504	↑	↑	↑	
	As-Sweida	2,366	20	115	207	↗	↑	↑		As-Sweida	2,923	100	296	638	↑	↑	↑	
	Tartous	1,138	-11	NA	NA	↓	↔	↔		Tartous	2,300	53	475	475	↑	↑	↑	
Bulgur (kg)	Aleppo	1,911	-3	62	191	↓	↑	↑	US Dollar exchange rate (parallel market, \$1)	Aleppo	3,171	25	-26	-60	↗	↓	↓	
	Damascus	2,422	22	85	197	↗	↑	↑		Damascus	3,175	27	-25	-60	↑	↓	↓	
	Dar'a	2,280	15	84	176	↗	↑	↑		Dar'a	3,120	28	-25	-60	↑	↓	↓	
	Deir-ez-Zor	1,820	-5	93	170	↓	↑	↑		Deir-ez-Zor	3,175	29	-25	-59	↑	↓	↓	
	Hama	2,125	-9	58	150	↓	↑	↑		Hama	3,175	27	-29	-60	↑	↓	↓	
	Al-Hasakeh	1,875	3	35	145	↗	↑	↑		Al-Hasakeh	3,105	24	-25	-59	↗	↓	↓	
	Homs	2,128	-8	58	152	↓	↑	↑		Homs	3,175	27	-29	-60	↑	↓	↓	
	Idleb	1,484	-9	70	219	↓	↑	↑		Idleb	3,111	24	-25	-60	↗	↓	↓	
	Lattakia	2,213	7	61	177	↗	↑	↑		Lattakia	3,170	25	-25	-60	↑	↓	↓	
	Quneitra	1,998	7	86	231	↗	↑	↑		Quneitra	3,115	28	-24	-60	↑	↓	↓	
	Ar-Raqqa	1,775	-9	48	162	↓	↑	↑		Ar-Raqqa	3,108	25	-25	-60	↗	↓	↓	
	Rural Damascus	2,381	21	76	175	↗	↑	↑		Rural Damascus	3,135	28	-24	-60	↑	↓	↓	
	As-Sweida	2,500	12	79	181	↗	↑	↑		As-Sweida	3,140	28	-26	-61	↑	↓	↓	
	Tartous	2,338	-11	58	181	↓	↑	↑		Tartous	3,170	25	-25	-60	↑	↓	↓	
Butane Cylinder (parallel market, 25 kg)	Aleppo	34,329	9	95	175	↗	↑	↑	Eggs (carton)	Aleppo	6,299	-7	35	219	↓	↑	↑	
	Damascus	21,417	5	43	65	↗	↑	↑		Damascus	7,008	4	53	202	↗	↑	↑	
	Dar'a	32,870	22	34	74	↗	↑	↑		Dar'a	6,995	1	61	200	↗	↑	↑	
	Deir-ez-Zor	23,925	7	113	125	↗	↑	↑		Deir-ez-Zor	7,296	7	61	193	↗	↑	↑	
	Hama	35,828	7	361	156	↗	↑	↑		Hama	6,841	-5	46	167	↓	↑	↑	
	Al-Hasakeh	11,417	10	93	108	↗	↑	↑		Al-Hasakeh	6,048	-7	23	138	↓	↗	↑	
	Homs	35,754	8	361	155	↗	↑	↑		Homs	6,843	-5	46	167	↓	↑	↑	
	Idleb	33,054	-19	69	228	↓	↑	↑		Idleb	6,248	-4	19	340	↓	↗	↑	
	Lattakia	30,000	9	193	98	↗	↑	↑		Lattakia	6,600	-5	33	172	↓	↑	↑	
	Quneitra	24,417	34	106	179	↑	↑	↑		Quneitra	6,471	-1	58	191	↓	↑	↑	
	Ar-Raqqa	27,917	46	214	302	↑	↑	↑		Ar-Raqqa	6,497	1	55	174	↗	↑	↑	
	Rural Damascus	23,500	11	67	73	↗	↑	↑		Rural Damascus	7,120	3	59	214	↗	↑	↑	
	As-Sweida	24,688	2	66	104	↗	↑	↑		As-Sweida	7,565	7	65	210	↗	↑	↑	
	Tartous	31,500	4	271	107	↗	↑	↑		Tartous	6,788	-3	36	173	↓	↑	↑	
Cheese (kg)	Aleppo	6,553	2	35	258	↗	↑	↑	Eggplant (kg)	Aleppo	1,527	1	220	215	↗	↑	↑	
	Damascus	5,902	0.3	54	229	↗	↑	↑		Damascus	954	-10	192	35	↓	↑	↑	
	Dar'a	5,723	13	44	260	↗	↑	↑		Dar'a	1,172	2	267	123	↗	↑	↑	
	Deir-ez-Zor	6,447	24	54	233	↗	↑	↑		Deir-ez-Zor	1,149	-12	263	144	↓	↑	↑	
	Hama	5,500	-0.4	35	198	↓	↑	↑		Hama	904	-33	141	94	↓	↑	↑	
	Al-Hasakeh	5,269	-2	70	261	↓	↑	↑		Al-Hasakeh	2,027	37	327	227	↑	↑	↑	
	Homs	5,500	0.3	34	199	↗	↑	↑		Homs	900	-33	142	91	↓	↑	↑	
	Idleb	6,707	-22	31	276	↓	↑	↑		Idleb	1,994	-13	206	197	↓	↑	↑	
	Lattakia	6,025	-7	6	112	↓	↗	↑		Lattakia	1,025	-11	105	102	↓	↑	↑	
	Quneitra	5,658	12	26	238	↗	↑	↑		Quneitra	1,050	-8	239	159	↓	↑	↑	
	Ar-Raqqa	5,650	17	69	166	↗	↑	↑		Ar-Raqqa	1,908	26	369	173	↑	↑	↑	
	Rural Damascus	6,062	3	73	281	↗	↑	↑		Rural Damascus	970	-13	183	66	↓	↑	↑	
	As-Sweida	7,627	16	99	289	↗	↑	↑		As-Sweida	1,229	-3	321	123	↓	↑	↑	
	Tartous	5,750	-	23	119	↔	↗	↑		Tartous	1,150	-	136	82	↔	↑	↑	
Chickpeas (kg)	Aleppo	2,148	-7	67	195	↓	↑	↑	Fish (tuna, canned) - 160 gm	Aleppo	2,210	-8	83	272	↓	↑	↑	
	Damascus	3,122	31	73	270	↑	↑	↑		Damascus	2,700	17	63	272	↗	↑	↑	
	Dar'a	2,422	12	88	256	↗	↑	↑		Dar'a	2,763	5	78	287	↗	↑	↑	
	Deir-ez-Zor	1,376	-34	38	114	↓	↑	↑		Deir-ez-Zor	2,475	30	97	257	↑	↑	↑	
	Hama	2,905	5	106	281	↗	↑	↑		Hama	3,449	-2	85	285	↓	↑	↑	
	Al-Hasakeh	1,842	6	17	96	↗	↗	↑		Al-Hasakeh	2,204	-8	19	204	↓	↗	↑	
	Homs	2,906	6	108	280	↗	↑	↑		Homs	3,453	-1	86	286	↓	↑	↑	
	Idleb	1,803	-11	99	313	↓	↑	↑		Idleb	2,128	-13	91	227	↓	↑	↑	
	Lattakia	2,975	4	105	300	↗	↑	↑		Lattakia	2,650	-1	81	262	↓	↑	↑	
	Quneitra	2,417	17	130	383	↗	↑	↑		Quneitra	2,408	-6	52	240	↓	↑	↑	
	Ar-Raqqa	3,144	13	126	323	↗	↑	↑		Ar-Raqqa	2,344	2	43	236	↗	↑	↑	
	Rural Damascus	3,058	36	132	289	↑	↑	↑		Rural Damascus	2,670	10	61	255	↗	↑	↑	
	As-Sweida	2,888	16	128	346	↗	↑	↑		As-Sweida	2,530	2	62	248	↗	↑		



Commodity Price and Change Analysis - Q3 2023																		
Commodity	Governorate	Current Price	Price change 1M (%)	Price change 6 M (%)	Price change 12 M (%)	Average Change 1M	Average Change 6 M	Average Change 12 M	Commodity	Governorate	Current Price	Price change 1M (%)	Price change 6 M (%)	Price change 12 M (%)	Average Change 1M	Average Change 6 M	Average Change 12 M	
Iodised salt (kg)	Aleppo	796	-2	58	214	↓	↑	↑	Sheep 2Y old Male (head)	Aleppo	491,268	1	33	101	↗	↑	↑	
	Damascus	408	-5	133	279	↓	↑	↑		Damascus	541,389	5	20	108	↗	↗	↑	
	Dar'a	572	6	87	268	↗	↑	↑		Dar'a	548,438	6	60	113	↗	↑	↑	
	Deir-ez-Zor	481	10	298	141	↗	↑	↑		Deir-ez-Zor	573,958	35	30	150	↑	↑	↑	
	Hama	1,000	8	33	186	↗	↑	↑		Hama	600,000	16	64	126	↗	↑	↑	
	Al-Hasakeh	490	1	22	361	↗	↗	↑		Al-Hasakeh	484,583	10	19	105	↗	↗	↑	
	Homs	1,000	7	33	186	↗	↑	↑		Homs	600,000	16	64	126	↗	↑	↑	
	Idleb	440	-32	62	273	↓	↑	↑		Idleb	576,190	4	38	162	↗	↑	↑	
	Lattakia	694	-1	296	374	↓	↑	↑		Lattakia	473,000	5	48	105	↗	↑	↑	
	Quneitra	442	-0.4	42	212	↓	↑	↑		Quneitra	493,750	-5	25	94	↓	↑	↑	
	Ar-Raqqa	720	24	106	605	↗	↑	↑		Ar-Raqqa	494,722	3	48	98	↗	↑	↑	
	Rural Damascus	443	4.6	166	318	↗	↑	↑		Rural Damascus	543,452	4	33	91	↗	↑	↑	
Red split lentils (kg)	As-Sweida	851	54	155	383	↑	↑	↑	As-Sweida	505,000	1	30	177	↗	↑	↑	↑	
	Tartous	325	-38	49	142	↓	↑	↑	Tartous	475,375	5	34	96	↗	↑	↑	↑	
	Aleppo	3,014	-3	87	249	↓	↑	↑	Aleppo	2,018	-16	61	217	↓	↑	↑	↑	
	Damascus	2,806	29	100	247	↑	↑	↑	Damascus	2,236	0.02	91	238	↗	↑	↑	↑	
	Dar'a	2,631	31	99	204	↑	↑	↑	Dar'a	2,145	-10	85	265	↓	↑	↑	↑	
	Deir-ez-Zor	2,566	-3	144	413	↓	↑	↑	Deir-ez-Zor	2,048	-6	40	185	↓	↑	↑	↑	
	Hama	3,000	5	111	162	↗	↑	↑	Hama	1,938	-19	64	235	↓	↑	↑	↑	
	Al-Hasakeh	1,923	-12	30	116	↓	↑	↑	Al-Hasakeh	1,833	-17	31	131	↓	↑	↑	↑	
	Homs	3,000	4	110	162	↗	↑	↑	Homs	1,939	-20	64	234	↓	↑	↑	↑	
	Idleb	2,357	-17	62	186	↓	↑	↑	Idleb	2,118	-14	45	191	↓	↑	↑	↑	
	Lattakia	3,200	10	115	220	↗	↑	↑	Lattakia	2,200	-5	73	280	↓	↑	↑	↑	
	Quneitra	2,578	13	117	347	↗	↑	↑	Quneitra	2,032	-13	81	244	↓	↑	↑	↑	
Meat (beef, kg)	Ar-Raqqa	3,978	31	174	314	↑	↑	↑	Ar-Raqqa	2,125	-9	59	176	↓	↑	↑	↑	
	Rural Damascus	2,875	24	110	241	↗	↑	↑	Rural Damascus	2,260	0.5	71	243	↗	↑	↑	↑	
	As-Sweida	2,933	15	112	252	↗	↑	↑	As-Sweida	2,407	-6	92	274	↓	↑	↑	↑	
	Tartous	3,575	5	133	260	↗	↑	↑	Tartous	2,425	-1	83	300	↓	↑	↑	↑	
	Aleppo	18,486	0.04	25	154	↑	↗	↑	Aleppo	1,278	-4	122	106	↓	↑	↑	↑	
	Damascus	20,787	3	48	157	↗	↑	↑	Damascus	844	-14	76	27	↓	↑	↑	↑	
	Dar'a	19,432	5	71	165	↗	↑	↑	Dar'a	978	-12	114	36	↓	↑	↑	↑	
	Deir-ez-Zor	14,417	-5	12	96	↓	↗	↑	Deir-ez-Zor	911	-11	79	28	↓	↑	↑	↑	
	Hama	20,926	15	57	179	↗	↑	↑	Hama	994	-7	32	38	↓	↑	↑	↑	
	Al-Hasakeh	16,615	12	12	104	↗	↗	↑	Al-Hasakeh	1,815	42	139	132	↑	↑	↑	↑	
	Homs	20,806	15	56	177	↗	↑	↑	Homs	999	-6	32	39	↓	↑	↑	↑	
	Idleb	16,636	-14	19	199	↓	↗	↑	Idleb	2,274	19	165	274	↗	↑	↑	↑	
White beans (kg)	Lattakia	23,250	17	79	168	↗	↑	↑	Lattakia	1,000	-23	74	22	↓	↑	↑	↗	
	Quneitra	19,583	10	49	146	↗	↑	↑	Quneitra	814	-19	108	17	↓	↑	↑	↗	
	Ar-Raqqa	14,472	9	57	145	↗	↑	↑	Ar-Raqqa	1,638	21	134	138	↗	↑	↑	↑	
	Rural Damascus	20,881	3	61	172	↗	↑	↑	Rural Damascus	892	-8	89	30	↓	↑	↑	↑	
	As-Sweida	18,771	9	56	142	↗	↑	↑	As-Sweida	1,183	-2	130	69	↓	↑	↑	↑	
	Tartous	22,500	7	84	161	↗	↑	↑	Tartous	1,250	6	82	71	↗	↑	↑	↑	
	Aleppo	5,356	-6	54	376	↓	↑	↑	Aleppo	6,457	7	94	120	↗	↑	↑	↑	
	Damascus	7,064	7	96	255	↗	↑	↑	Damascus	8,551	17	35	155	↗	↑	↑	↑	
	Dar'a	6,898	0.5	83	272	↗	↑	↑	Dar'a	5,771	9	56	96	↗	↑	↑	↑	
	Deir-ez-Zor	6,136	-1	202	258	↓	↑	↑	Deir-ez-Zor	3,464	21	39	-7	↗	↑	↓	↓	
	Hama	6,444	-4	84	252	↓	↑	↑	Hama	5,000	0	12	100	↔	↗	↑	↑	
	Al-Hasakeh	4,215	-14	76	206	↓	↑	↑	Al-Hasakeh	5,344	-1	7	138	↓	↗	↑	↑	
Vegetable oil (L)	Homs	6,460	-3	85	260	↓	↑	↑	Homs	5,000	0	11	100	↔	↗	↑	↑	
	Idleb	4,159	-12	103	441	↓	↑	↑	Idleb	9,053	-2	80	112	↓	↑	↑	↑	
	Lattakia	6,700	-2	59	280	↓	↑	↑	Lattakia	7,000	-3	17	129	↓	↗	↑	↑	
	Quneitra	5,808	17	223	341	↗	↑	↑	Quneitra	6,917	16	78	196	↗	↑	↑	↑	
	Ar-Raqqa	5,309	-15	118	191	↓	↑	↑	Ar-Raqqa	6,128	7	31	67	↗	↑	↑	↑	
	Rural Damascus	6,976	6	122	274	↗	↑	↑	Rural Damascus	7,899	8	54	115	↗	↑	↑	↑	
	As-Sweida	7,488	-1	291	392	↓	↑	↑	As-Sweida	5,083	5	103	120	↗	↑	↑	↑	
	Tartous	7,069	-4	72	316	↓	↑	↑	Tartous	8,750	2	46	211	↗	↑	↑	↑	
	Aleppo	7,011	-10	112	438	↓	↑	↑	Aleppo	1,906	0	92	272	↓	↑	↑	↑	
	Damascus	8,289	-3	118	509	↓	↑	↑	Damascus	2,211	14	95	281	↗	↑	↑	↑	
	Dar'a	8,375	-8	130	480	↓	↑	↑	Dar'a	1,961	3	72	182	↗	↑	↑	↑	
	Deir-ez-Zor	7,410	13	147	420	↗	↑	↑	Deir-ez-Zor	1,725	-17	57	210	↓	↑	↑	↑	
Parsley (packet)	Hama	7,729	-17	113	400	↓	↑	↑	Hama	2,003	-13	74	227	↓	↑	↑	↑	
	Al-Hasakeh	5,433	-21	108	315	↓	↑	↑	Al-Hasakeh	1,652	0.03	29	125	↗	↑	↑	↑	
	Homs	7,723	-17	113	400	↓	↑	↑	Homs	2,000	-13	74	227	↓	↑	↑	↑	
	Idleb	6,186	-4	140	480	↓	↑	↑	Idleb	1,453	-20	46	181	↓	↑	↑	↑	
	Lattakia	8,138	-12	131	445	↓	↑	↑	Lattakia	1,925	-2	77	223	↓	↑	↑	↑	
	Quneitra	8,075	-8	128	451	↓	↑	↑	Quneitra	1,849	6	70	196	↗	↑	↑	↑	
	Ar-Raqqa	6,886	-4	182	492	↓	↑	↑	Ar-Raqqa	1,889	16	91	234	↗	↑	↑	↑	
	Rural Damascus	8,417	-2	129	532	↓	↑	↑	Rural Damascus	2,068	8	104	245	↗	↑	↑	↑	
	As-Sweida	8,710	-3	123	375	↓	↑	↑	As-Sweida	2,292	12	96	249	↗	↑	↑	↑	
	Tartous	8,213	-9	123	457	↓	↑	↑	Tartous	2,263	-2	89	273	↓	↑	↑	↑	
	Aleppo	217	30	-30	78	↑	↓	↑	Aleppo	3,555	14	137	325	↗	↑	↑	↑	
	Rice (kg)	Damascus	200	0	125	120	↔	↑	↑	Damascus	3,028	18	97	268	↗	↑	↑	↑
Dar'a		177	2	1	77	↗	↗	↑	Dar'a	3,072	14	115	320	↗	↑	↑	↑	
Deir-ez-Zor		147	-11	57	147	↓	↑	↑	Deir-ez-Zor	2,908	54	197	244	↑	↑	↑	↑	
Hama		200	0	18	167	↔	↗	↑	Hama	4,617	17	175	238	↗	↑	↑	↑	
Al-Hasakeh		204	-2	10	104	↓	↗	↑	Al-Hasakeh	2,244	-3	46	139	↓	↑	↑	↑	
Homs		200	0	14	167	↔	↗	↑	Homs	4,607	17	175	236	↗	↑	↑	↑	
Idleb		203	-31	-37	5	↓	↓	↗	Idleb	2,189	-6	65	218	↓	↑	↑	↑	
Lattakia		200	21	45	88	↗	↑	↑	Lattakia									