

@WFP/Jessica Lawson

### Highlights

The national average price of WFP's standard reference food basket decreased by five percent between April and May 2021, reaching SYP 167,842 (USD 67 at the official exchange rate of SYP 2,500/USD).

In May 2021, the informal exchange rate continued to strengthen, appreciating by one percent. As a result, the price of many key food items continued to decrease. The price of vegetable oil and sugar decreased by 29 and eight percent, respectively, from April and May 2021.

However, the price of meat products increased in May 2021 mainly as a result of increased feed prices. Between April and May 2021, the price of minced beef, chicken legs and whole clean chicken increased by three, five and 13 percent, respectively.

Between April and May 2021, the price of all monitored COVID-19 items increased. Plastic gloves recorded the highest increase (26 percent), while alcohol spray recorded the lowest increase (three percent).

For further information, please contact:

Jan Michiels at  
Jan.Michiels@wfp.org

Pakinam Moussa at  
Pakinam.Moussa@wfp.org

### Standard Food Basket

The national average price of a standard reference food basket<sup>1</sup> decreased by five percent from April to May 2021, reaching SYP 167,842. Nevertheless, it remained 69 percent higher than in November 2020 (six months ago) and 197 percent higher compared to May 2020 (Figure 1). This is the second consecutive month-on-month (m-o-m) decrease in the price of the reference food basket since August 2020. This decrease is linked to the continued improvement in the informal exchange rate and the decrease in the price of informal diesel between April and May 2021.

M-o-m, 12 governorates recorded a decreasing average reference food basket price in May 2021. The highest m-o-m decrease of eight percent was reported in Aleppo, Dar'a and Deir-ez-Zor, where the cost of the food basket reached SYP 161,976, SYP 167,101 and SYP 153,980, respectively. The lowest m-o-m decrease of one percent was reported in Homs at SYP 167,922. The lowest reference food basket price remained Al-Hasakeh (SYP 119,466, down seven percent m-o-m) due to the cheaper price of bread.

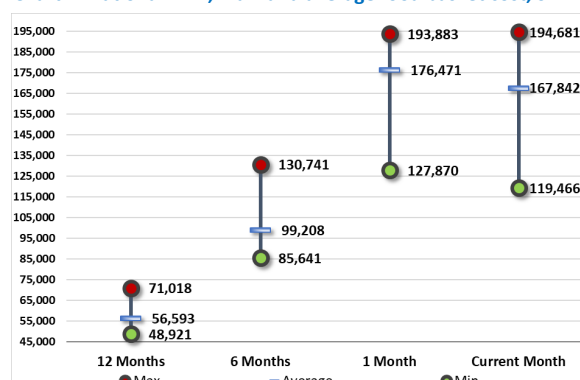
Year-on-year (y-o-y), the price of the reference food basket has significantly increased across all 14 governorates. Quneitra recorded the highest increase (up 249 percent), while Al-Hasakeh recorded the lowest increase (up 90 percent).

The gap between the highest and lowest average food basket prices widened by 14 percent from SYP 66,103 in April 2021 to SYP 75,216 in May 2021 and by 240 percent since May 2020 (Chart 1). This gap highlights continued supply chain and fuel disruptions across the country since last year.

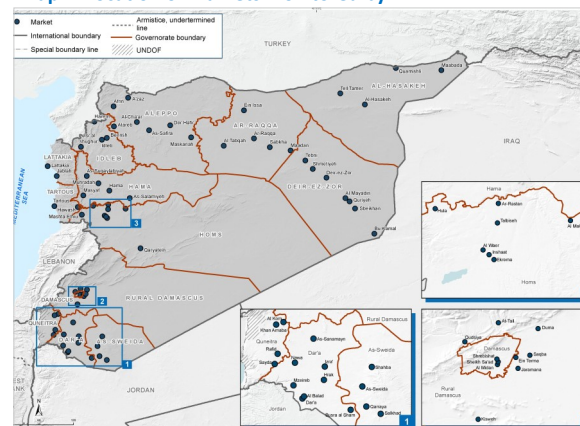
Figure 1: Food basket cost and changes, SYP

Governorate	Price May 2021	1 month change	6 months changes	12 months changes
Aleppo	SYP 161,976	-8%	60%	214%
Damascus	SYP 173,575	-4%	88%	205%
Dar'a	SYP 167,101	-8%	70%	173%
Deir-ez-Zor	SYP 153,980	-8%	80%	213%
Hama	SYP 158,262	-7%	67%	194%
Al-Hasakeh	SYP 119,466	-7%	30%	90%
Homs	SYP 167,922	-1%	76%	211%
Idlib	SYP 173,952	-5%	33%	145%
Lattakia	SYP 186,250	0%	76%	234%
Ar-Raqqa	SYP 175,604	-7%	86%	182%
Rural Damascus	SYP 168,721	-7%	82%	211%
As-Sweida	SYP 174,963	-4%	83%	225%
Tartous	SYP 194,681	0%	81%	246%
Quneitra	SYP 173,333	-3%	70%	249%
Average	SYP 167,842	-5%	69%	197%

Chart 1: National min., max. and average food basket cost, SYP



Map 1: Location of markets monitored by WFP



1. The standard food basket is a group of essential food commodities. In Syria, the food basket is set at a group of dry goods providing 2,060 kcal a day for a family of five during a month. The basket includes 37 kg bread, 19 kg rice, 19 kg lentils, 5 kg of sugar, and 7 litres of vegetable oil.

**Legend on regions of analysis:** ‘Northwest’=Aleppo; ‘Cross-border’=Idleb & Aleppo [A’zaz, Atarib & Afrin]; ‘Coastal’=Lattakia & Tartous; ‘Northeast’=Ar-Raqqa, Al-Hasakeh & Deir-ez-Zor; ‘Middle’=Damascus, Rural Damascus, Hama, Homs and Idleb [Senjar]; ‘South’=Dar’a, As-Sweida & Quneitra.

## The rise in meat prices

### Overview

Between April and May 2021, the price of chicken and beef increased as a result of a number of factors. The high price of chicken in particular is linked to the high cost of inputs, especially feed, as explained by Osama Daboul, the Vice-Chairman of the Poultry Breeders Committee in Tartous. Daboul explained that “the poultry sector, including meat and eggs, is going through a tragic and catastrophic situation, and if this situation continues without solutions, the sector may collapse.” Daboul further explained that as per a recent decision 50 percent of the traders’ imports must be delivered to the feed corporation. As a result feed prices have increased reaching SYP 1.2 million/MT for corn and SYP 2.3 million/MT for soybeans. Combined, these inputs constitute 80 percent of the feed mix<sup>2</sup>. It is important to note that the import of goods into Syria, feed included, is heavily influenced by Syria’s fluctuating informal exchange rate, which causes imported products to be priced higher in Syrian pounds.

Moreover, the demand for red meat has decreased due to high prices. Syrian households have started buying red meat in ounces instead of kilos as a coping mechanism due to their reduced purchasing power. Red meat traders complained that sales have decreased. Additionally, the higher price of fuel needed for refrigerators and freezers also contributed to the increased price of meat<sup>3</sup>.

### Meat prices

M-o-m, the national average price of minced beef increased by three percent, reaching SYP 19,829/kg. Lattakia recorded the highest price at SYP 24,720/kg (up six percent m-o-m), while Ar-Raqqa recorded the lowest price at SYP 15,500/kg (up seven percent m-o-m).

Broken down by regions, the coastal region recorded the highest price at SYP 24,710/kg (up eight percent m-o-m), followed by the middle region at SYP 21,000/kg (up one percent m-o-m). While northeast Syria recorded the lowest price at SYP 16,790 (up ten percent m-o-m), followed by the cross-border region at SYP 17,917/kg (up eight percent m-o-m).

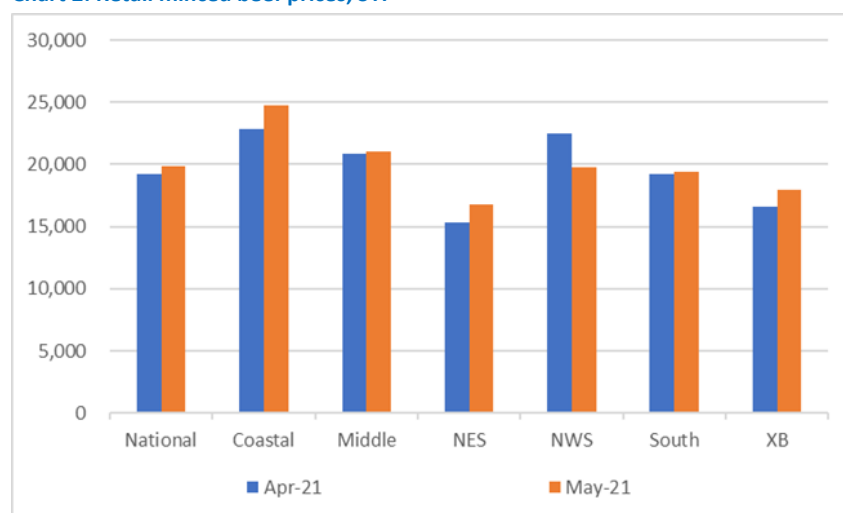
Moreover, m-o-m, the national average price of a whole clean chicken increased by 13 percent, reaching SYP 7,643/kg. Dar’a recorded the highest price at SYP 8,452/kg (up 17 percent m-o-m), while Ar-Raqqa recorded the lowest price at SYP 6,007/kg (up two percent m-o-m).

Broken down by regions, the coastal region recorded the highest price at SYP 8,355/kg (up 33 percent m-o-m), followed by the southern region at SYP 8,304 (up 15 percent m-o-m). While the cross-border region recorded the lowest price at SYP 6,414/kg (up 14 percent m-o-m), followed by northeast Syria at SYP 6,834/kg (up 14 percent m-o-m).

Additionally, the national average price of chicken legs increased by five percent m-o-m reaching SYP 7,762/kg. Dar’a recorded the highest price at SYP 9,184/kg (up 16 percent m-o-m), while Ar-Raqqa recorded the lowest price at SYP 5,818/kg (down ten percent m-o-m).

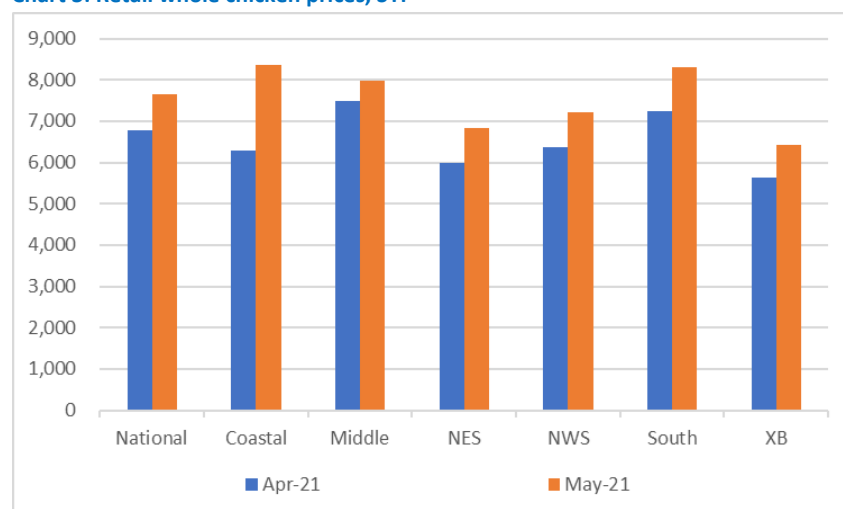
Broken down by regions, the coastal region recorded the highest price at SYP 8,422/kg (up 15 percent m-o-m), followed by the southern region at SYP 8,304/ kg (up 13 percent m-o-m). While the cross-border region recorded the lowest price at SYP 6,362/kg (up 14 percent m-o-m), followed by northwest Syria at SYP 6,968/kg (up ten percent m-o-m).

Chart 2: Retail minced beef prices, SYP



Source: WFP Field Offices

Chart 3: Retail whole chicken prices, SYP



Source: WFP Field Offices

2. “أسعار الفروج تستمر بالارتفاع... لجنة مربي الدواجن: نمر بوضع كارثي.” *Economy2Day*, 12 May 2021, <https://www.economy2day.com/new/كارثي-نمر-بوضع-كارثي>.  
3. Muhammad, Halim. “Despite a Decline in Its Prices, Daraa Residents Cannot Afford Red Meat.” *Enab Baladi*, 24 May 2021, [english.enabbaladi.net/archives/2021/05/despite-a-decline-in-its-prices-daraa-residents-cannot-afford-red-meat/](https://english.enabbaladi.net/archives/2021/05/despite-a-decline-in-its-prices-daraa-residents-cannot-afford-red-meat/).



## Staple cereals retail prices

### Wheat Flour

M-o-m, the national average retail price of wheat flour throughout Syria remained unchanged in May 2021 at SYP 1,931/kg, while y-o-y the wheat flour price increased by 200 percent. Lattakia recorded the highest wheat flour price at SYP 2,337/kg (up 21 percent m-o-m), while Idleb recorded the lowest average price of SYP 1,460/kg (up 0.5 percent m-o-m).

Broken down by regions, the coastal region recorded the highest retail price at SYP 2,316/kg (up 11 percent m-o-m), followed by northwest Syria at SYP 2,075/kg (down 12 percent m-o-m). While the cross-border region recorded the lowest retail price at SYP 1,393/kg (unchanged m-o-m), followed by northeast Syria at SYP 1,759/kg (up one percent m-o-m) - Chart 4.

### Rice

M-o-m, the national average retail price of Egyptian white rice decreased by eight percent reaching SYP 2,487/kg in May 2021, while the price of Egyptian white rice increased by 144 percent y-o-y. Quneitra recorded the highest price at SYP 2,905/kg (down six percent m-o-m), while Al-Hasakeh recorded the lowest price at SYP 1,996/kg (down seven percent m-o-m).

M-o-m, the coastal region recorded the highest price at SYP 2,791/kg (unchanged m-o-m), followed by the southern region at SYP 2,735/kg (down seven percent m-o-m). On the other hand, northeast Syria recorded the lowest price at SYP 2,222/kg (down 13 percent m-o-m), followed by northwest Syria at SYP 2,370/kg (down 12 percent m-o-m) - Chart 5.

### Bulgur

M-o-m, the national average retail price of bulgur decreased by four percent reaching SYP 1,984/kg in May 2021, yet the price of bulgur increased by 135 percent y-o-y. As-Swieda recorded the highest bulgur retail price at SYP 2,500/kg (unchanged m-o-m), while Idleb recorded the lowest price at SYP 1,503/kg (up one percent m-o-m).

The coastal region recorded the highest average bulgur price by region at SYP 2,209/kg (down three percent m-o-m), followed by the southern region at SYP 2,150/kg (down five percent m-o-m). The cross-border region recorded the lowest average bulgur price at SYP 1,446/kg (down two percent m-o-m), followed by northeast Syria at SYP 1,753/kg (down four percent m-o-m) - Chart 6.

### Bread\*

The national average price of subsidized bread in May 2021 reached SYP 129/bundle (up seven percent m-o-m and 142 percent y-o-y). The increase is due to the higher fees charged by agents because of the increased transport cost.

Moreover, the price of commercial bread increased by six percent m-o-m and by 129 percent y-o-y, reaching SYP 1,687/bundle. As-Sweida recorded the highest commercial bread price of SYP 2,183/bundle (down eight percent m-o-m), while Al-Hasakeh recorded the lowest price of SYP 1,013/bundle (down 27 percent m-o-m).

Broken down by regions, the southern region recorded the highest price of SYP 2,033/bundle (down three percent m-o-m), followed by northwest Syria at SYP 2,000/bundle (down seven percent m-o-m). While northeast Syria recorded the lowest price at SYP 1,210/bundle (down 19 percent m-o-m), followed by the cross-border region at SYP 1,456/bundle (down one percent m-o-m).

Chart 4: Retail Prices of Wheat Flour, SYP

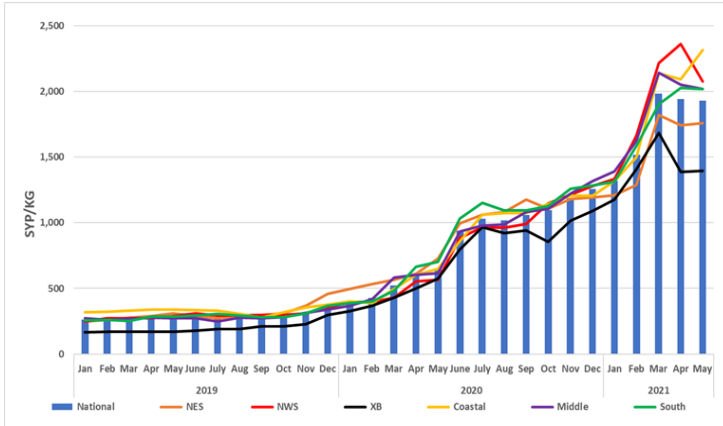


Chart 5: Retail Prices of Rice, SYP

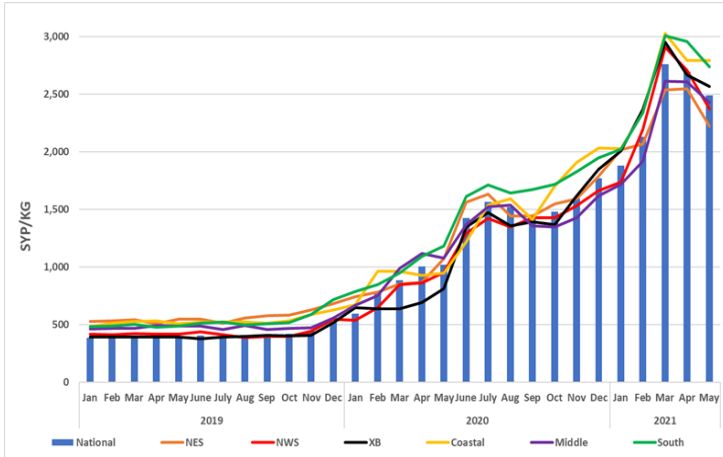


Chart 6: Retail Prices of Bulgur, SYP

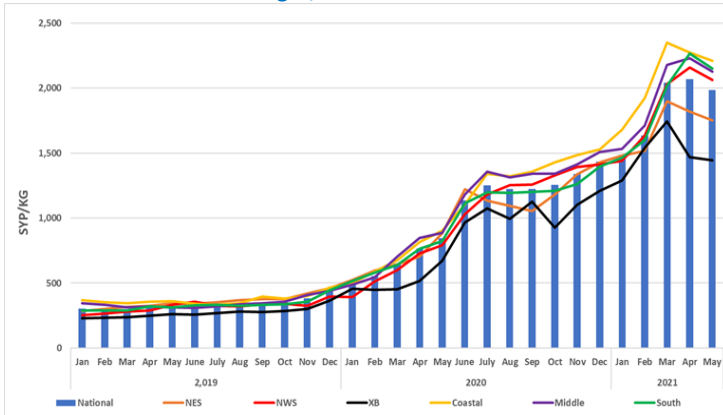
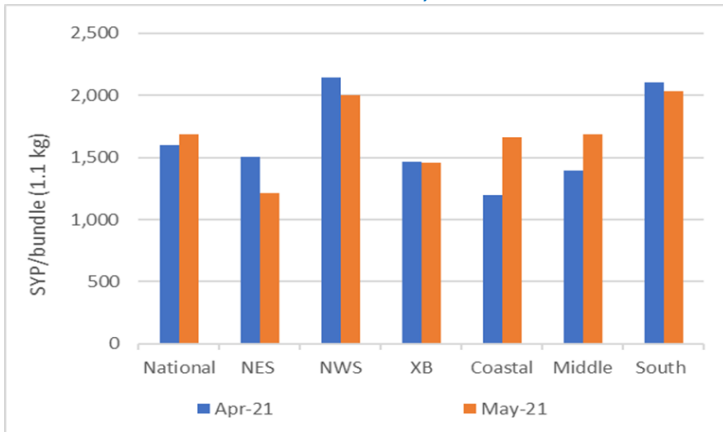


Chart 7: Retail Prices of commercial bread, SYP



Source: WFP Field Offices

\*Starting from March 2021, WFP-monitored commercial bread has been switched from resold public bread bundles to commercial bread sold at shops. Prices for the past year have been adjusted to include commercial bread resold from shops. Moreover, all prices have been adjusted to reflect bread bundle size of 1.1 kg instead of 1.3 kg since November 2020.

### Exchange rate\*\*

In May 2021, the informal exchange rate strengthened m-o-m, and the Syrian pound gained one percent of its value reaching SYP 3,113/USD. However, compared to one year ago, the Syrian pound significantly depreciated by 49 percent.

The highest informal exchange rate was reported in Damascus at SYP 3,145/USD (appreciated by one percent m-o-m), followed by Rural Damascus at SYP 3,139/USD (unchanged m-o-m). While, the lowest rate was reported in Dar'a at SYP 3,086/USD (appreciated by one percent m-o-m), followed by Al-Hasakeh at SYP 3,093/USD (unchanged m-o-m).

Moreover, the official exchange rate and the UN operational rate have both remained unchanged m-o-m, at SYP 2,500/USD.

### Diesel

In May 2021, the formal national average price of diesel increased by one percent m-o-m, reaching SYP 176/litre due to added fees at the fueling stations.

Moreover, the informal national average price of transport diesel significantly decreased by 21 percent since April 2021; nevertheless, it increased by 326 percent since May 2020, reaching SYP 1,782/litre. The informal price remains nine times higher than the official price (SYP 176/litre) - Chart 8. As -Sweida recorded the highest informal price at SYP 2,360/litre (down 19 percent m-o-m), while Al-Hasakeh recorded the lowest price at SYP 235/litre (up three percent m-o-m).

Broken down by regions, the cross-border region recorded the highest informal diesel price at SYP 2,199/litre (down five percent m-o-m), while northeast Syria recorded the lowest price at SYP 787/litre (up two percent m-o-m).

Moreover, the informal national average price of heating diesel also decreased by 29 percent m-o-m. Broken down by regions, northwest Syria recorded the highest price at SYP 1,900/litre (down 37 percent m-o-m), while northeast Syria recorded the lowest price at SYP 917/litre (down 27 percent m-o-m).

### Butane gas prices

In May 2021, the official butane gas cylinder price (25,000 L) remained unchanged m-o-m at SYP 4,079/refill. However, compared to May 2020, the price increased by 43 percent.

Moreover, the informal national average price of one butane gas cylinder (25,000 L) decreased by five percent m-o-m reaching SYP 27,234/refill in May 2021. Nevertheless, compared to May 2020, the price increased by 99 percent. Aleppo recorded the highest price at SYP 35,448/refill (up three percent m-o-m), while Al-Hasakeh recorded the lowest price at SYP 10,802 (down five percent m-o-m).

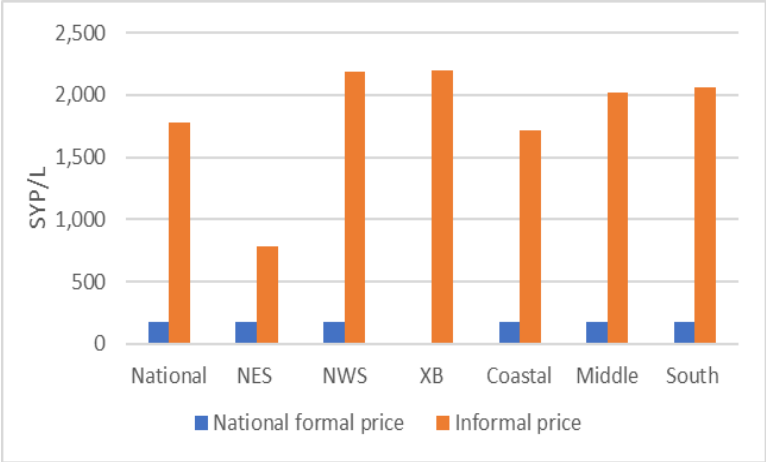
Broken down by regions, northwest Syria recorded the highest informal refill price at SYP 38,281/refill (up nine percent m-o-m), followed by the cross-border region at SYP 32,418/refill (down five percent m-o-m). While northeast Syria recorded the lowest price at SYP 21,523/refill (up three percent m-o-m), followed by the middle region at SYP 24,839/refill (down 17 percent m-o-m).

Table 1: Informal market exchange rate, 1 USD to SYP

Governorate	May 2021	% change (m-o-m)	% change (y-o-y)
Aleppo	3,099	2%	-49%
Al-Hasakeh	3,093	0%	-47%
Ar-Raqqa	3,114	0%	-48%
As-Sweida	3,115	1%	-50%
Damascus	3,145	1%	-49%
Dar'a	3,086	1%	-50%
Deir-ez-Zor	3,138	1%	-48%
Hama	3,111	2%	-47%
Homs	3,111	2%	-47%
Idleb	3,098	0%	-49%
Lattakia	3,109	2%	-49%
Quneitra	3,110	0%	-51%
Rural Damascus	3,139	0%	-49%
Tartous	3,109	2%	-49%
National average	3,113	1%	-49%
Official rate	2,500	0%	-72%

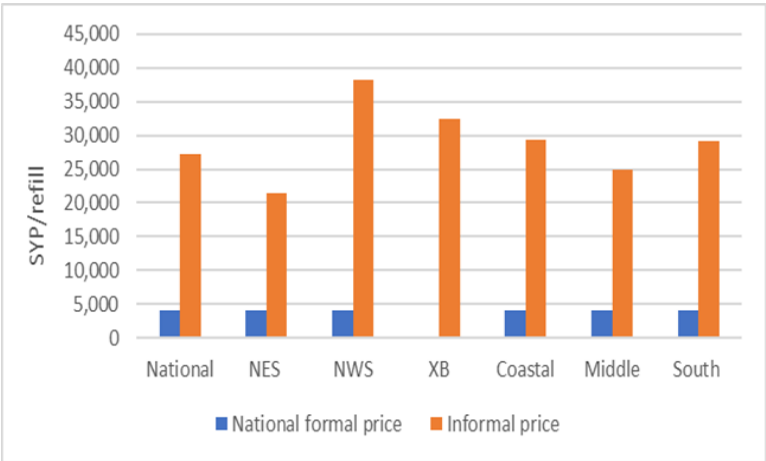
Source: WFP field offices

Chart 8: Formal and informal transport diesel prices, SYP\*



Source: WFP

Chart 9: Formal and informal butane gas cylinder prices, SYP\*\*\*



\*\*When measuring exchange rates, there are two quotations. The first is the direct quotation where the US dollar is the base of measuring the change in exchange rate against the local currency. The second one is the indirect quotation where the local currency is the base of measuring the change in the exchange rate against the US dollar. The change in the exchange rate used below reflects the indirect quotation (measuring how much has the Syrian pound improved (appreciated) or worsened (depreciated) against the US dollar).

\*\*\*No formal prices have been reported in the cross-border region as there is no subsidized diesel or butane gas in the region.

Terms of Trade (ToT)<sup>4</sup>

ToT between wage labour and wheat flour

The national average non-skilled labour wage, representing construction, off-loading and agricultural labour, was at SYP 6,427/day (up four percent m-o-m) in May 2021. Moreover, the wage rate was 102 percent above its y-o-y level and 39 percent above levels recorded in November 2020 - Chart 10.

Damascus recorded the highest daily wage rate at SYP 8,708/day (up two percent m-o-m), while Deir-ez-Zor recorded the lowest daily wage rate at SYP 3,905/day (up 13 percent m-o-m). Broken down by regions, the coastal region recorded the highest wage rate of SYP 8,400/day (up seven percent m-o-m), while northeast Syria recorded the lowest wage rate of SYP 5,026/day (up five percent m-o-m).

The national average ToT between wheat flour and wage labour, a proxy indicator for purchasing power, increased by four percent between April and May 2021, reaching 3.3 kgs of wheat flour/daily wage compared to 3.2 kgs of wheat flour in April 2021.

However, the national average ToT between wheat flour and wage labour decreased by 15 percent compared to November 2020 (six months ago) and by 33 percent compared to May 2020. In other words, the national average daily wage of a non-skilled labourer could buy 3.3 kgs of wheat flour in May 2021 compared to 3.9 kgs in November 2020, and 5.0 kgs in May 2020.

Broken down by regions, the cross-border region recorded the highest ToT at 5.1 kgs (down seven percent m-o-m), while northeast Syria and the southern region recorded the lowest ToT at 2.9 kgs (up four and two percent m-o-m, respectively).

ToT between sheep and wheat flour

The national average price of a two-year old alive male sheep decreased by six percent m-o-m; however, it increased by 82 percent y-o-y, reaching SYP 505,759/sheep in May 2021 (Chart 12).

Homs recorded the highest price of a two-year old alive male sheep at SYP 594,405/head (down one percent m-o-m), while Al-Hasakeh recorded the lowest price at SYP 435,417/head (down ten percent m-o-m).

Broken down by regions, the coastal region recorded the highest average price across Syria at SYP 545,350/sheep (up 15 percent m-o-m), followed by the middle region at SYP 543,604/sheep (down eight percent m-o-m). The northeast Syria recorded the lowest price at SYP 469,519/sheep (down nine percent m-o-m), followed by northwest Syria at SYP 475,885/sheep (down five percent m-o-m).

In May 2021, the ToT between an alive two-year old male sheep and wheat flour was 262 kg/sheep (down five percent m-o-m). This highlights a deterioration in the exchange for livestock owners who could buy on average five percent less wheat flour compared to a month earlier. Moreover, the ToT has worsened by 39 percent since May 2020.

Broken down by regions, the cross-border region recorded the highest ToT at 360 kg/sheep (up four percent m-o-m), followed by the middle region at 269 kg/sheep (down seven percent m-o-m). While northwest Syria region recorded the lowest ToT per region at 229 kg/sheep (up nine percent m-o-m), followed by the coastal region at 235 kg/sheep (up four percent m-o-m).

Chart 10: Daily wage for unskilled labour, SYP

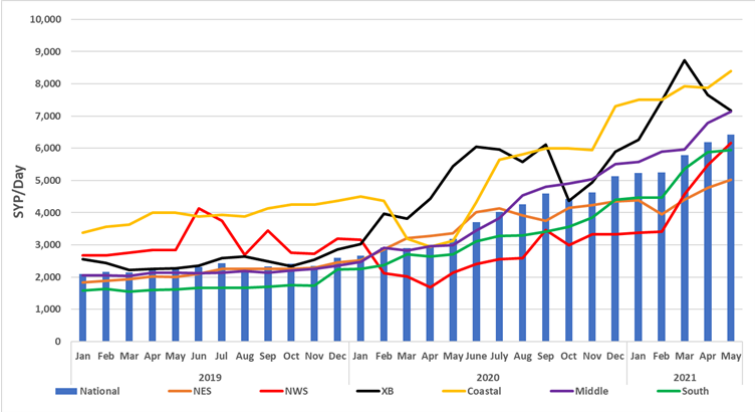


Chart 11: Terms of Trade (ToT) between wheat flour and wage rate

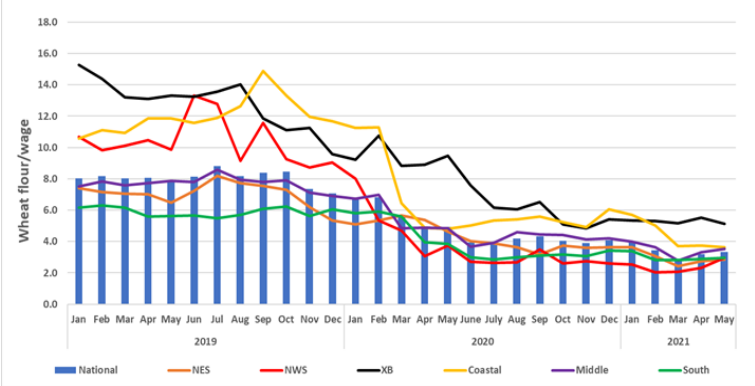


Chart 12: Price of livestock, SYP/one 2Y old sheep

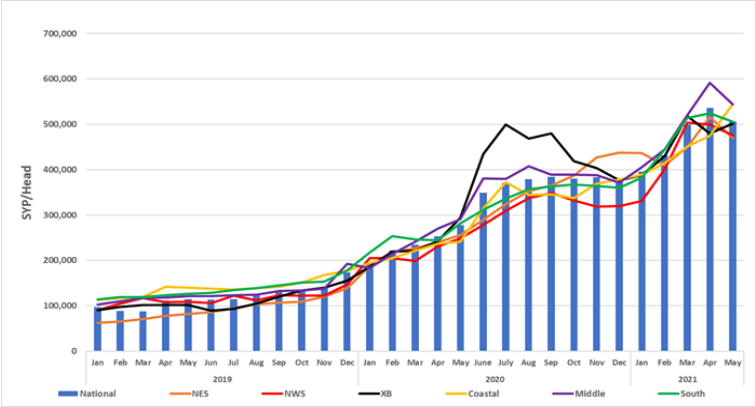
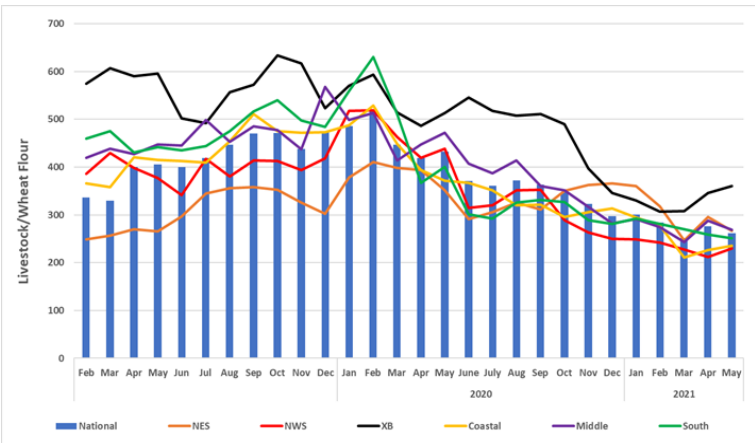


Chart 13: Terms of Trade (ToT) between wheat flour and the price of a 2 year old sheep



Source: WFP

4. The ToT are proxy indicators of the purchasing power of households that rely on livestock and/or casual labour as their main source of income for the purchase of cereals from local markets. ToT are important components of food security analysis. Changes in the terms of trade between wages/livestock and staple food commodities are indicative of the trends in purchasing power and the impact on the food security situation of households dependent on food purchases through income from daily wage labour and/or the sale of livestock.

## COVID-19 NFIs

Table 2: Prices of key COVID-19 items, week-on-week in May 2021, SYP

National average	Week 1 (SYP)	Week 2 (SYP)	Week 3 (SYP)	Week 4 (SYP)	% Change (May W4&W1)
Surgeon mask	348	349	348	757	118%
Gloves (pair)	517	561	537	942	82%
Alcohol spray (200 ml)	2,155	2,183	2,167	2,541	18%
Bleach bottle (L)	1,447	1,412	1,392	1,791	24%
Hand gel (50 ml)	1,106	1,096	1,126	1,511	37%
Soap bar	514	511	514	913	78%

The price of all monitored COVID-19 items increased between April and May 2021. M-o-m, the price of surgeon masks and plastic gloves increased by 20 and 26 percent, reaching SYP 451/mask and SYP 643/pair, respectively. M-o-m, the price of hand gel and soap bars increased by six and 13 percent, reaching SYP 1,211/50 ml and SYP 615/bar, respectively. Moreover, m-o-m, the price of alcohol spray and bleach increased by three and four percent reaching SYP 2,263/200 ml and SYP 1,512/litre, respectively.

Compared to November 2020 (six months ago), the price of surgeon masks and soap bars and plastic gloves increased by 33, 74 and 86 percent, respectively. Moreover, the price of hand gel, bleach and alcohol spray increased by 30, 37 and 40 percent.

Additionally, the price of all items increased in May 2021 compared to February 2020 (prior to the COVID-19 outbreak in Syria). The price of soap bars, surgeon masks and plastic gloves have increased by 312, 471 and 859 percent, respectively. Also, the price of bleach, hand gel and alcohol spray have increased by 263, 402 and 441 percent, respectively.

Table 3: Monthly price changes of key COVID-19 items, SYP

National average	Feb-20 (SYP)	May-21 (SYP)	% Change
Surgeon mask	79	451	471%
Gloves (pair)	67	643	859%
Alcohol spray (200 ml)	418	2,263	441%
Bleach bottle (L)	416	1,512	263%
Hand gel (50 ml)	241	1,211	402%
Soap bar	149	615	312%

Source: WFP

## Key food items retail prices

### Vegetable oil

M-o-m, the national average retail price of vegetable oil decreased by 29 percent throughout Syria, reaching SYP 5,408/litre. Nevertheless, it has increased by 42 percent since November 2020 (six months ago) and by 239 percent since May 2020.

Lattakia recorded the highest vegetable oil price at SYP 8,206/litre (up one percent m-o-m), while Al-Hasakeh recorded the lowest price at SYP 5,153/litre (down five percent m-o-m).

Broken down by regions, the coastal region recorded the highest price at SYP 8,139/litre (unchanged m-o-m), followed by northwest Syria at SYP 7,575/litre (down eight percent m-o-m). The cross-border region recorded the lowest price of vegetable oil at SYP 5,408/litre (down three percent m-o-m), followed by northeast Syria at SYP 6,249/litre (down seven percent m-o-m).

Chart 14: Retail Prices of Vegetable Oil, SYP

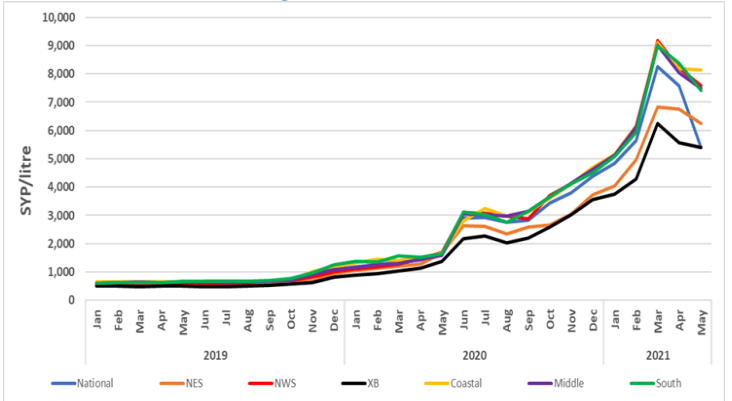
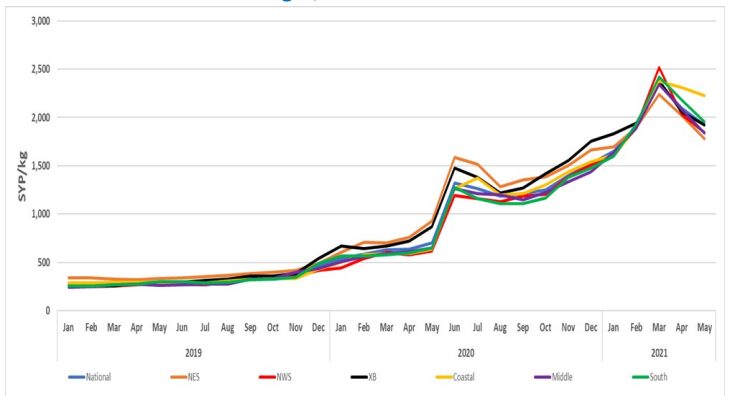


Chart 15: Retail Prices of Sugar, SYP



Source: WFP

### Sugar

In May 2021, the national average retail price of sugar decreased by eight percent m-o-m, reaching SYP 1,922/kg. Nevertheless, the national average price has increased by 37 percent since November 2020 (six months ago) and by 173 percent since May 2020. Tartous recorded the highest sugar price at SYP 3,245/kg (down seven percent m-o-m), while Al-Hasakeh recorded the lowest price of SYP 1,713/kg (down seven percent m-o-m).

Broken down by regions, the coastal region recorded the highest price of SYP 2,227/kg (down four percent m-o-m), followed by the southern region at SYP 1,952/kg (down 11 percent m-o-m). Conversely, northeast Syria recorded the lowest price at SYP 1,782/kg (down 12 percent m-o-m), followed by the middle region at SYP 1,841 /kg (down 12 percent m-o-m).



Table 4. Market Price of Main Commodities in Syrian Pounds: May 2021																		
Commodity	Governorate	Current Price	Price change	Price change	Price change	Average Change	Average Change	Average Change	Commodity	Governorate	Current Price	Price change	Price change	Price change	Average Change	Average Change	Average Change	
			1M (%)	6 M (%)	12 M (%)	1M	6 M	12 M				1M (%)	6 M (%)	12 M (%)	1M	6 M	12 M	
Bread Public (1.1 kg)	Aleppo*	131	3	31	157	↗	↑	↑	Dates (kg)	Aleppo	4,105	-14	-5	99	↓	↓	↑	
	Damascus	100	-3	-	103	↓	↔	↑		Damascus	5,181	-4	26	139	↓	↑	↑	
	Dar'a	131	-0.1	23	139	↓	↗	↑		Dar'a	4,910	-15	28	103	↓	↑	↑	
	Deir-ez-Zor	142	-15	42	49	↓	↑	↑		Deir-ez-Zor	2,996	-	-2	18	↔	↓	↗	
	Hama	135	35	35	219	↑	↑	↑		Hama	4,500	-19	11	104	↓	↗	↑	
	Al-Hasakeh	100	-	-	136	↔	↔	↑		Al-Hasakeh	4,028	0.1	36	121	↗	↑	↑	
	Homs	125	25	25	195	↑	↑	↑		Homs	4,789	-13	19	116	↓	↗	↑	
	Idleb*	138	-63	-	-	↔	↔	↔		Idleb	4,030	-9	41	97	↓	↑	↑	
	Lattakia	150	50	50	136	↑	↑	↑		Lattakia	6,740	38	30	126	↑	↑	↑	
	Quneitra	146	1	46	245	↗	↑	↑		Quneitra	3,777	-20	-2	63	↓	↓	↑	
	Ar-Raqqa	172	41	81	139	↑	↑	↑		Ar-Raqqa	4,114	-4	24	83	↓	↗	↑	
	Rural Damascus	101	1	1	88	↗	↗	↑		Rural Damascus	4,750	-12	26	113	↓	↑	↑	
Bread Shop (1.1 kg)	As-Sweida	100	-	-	136	↔	↔	↑	Diesel (parallel market, L)	As-Sweida	5,948	-3	47	230	↓	↑	↑	
	Tartous	145	-3	40	99	↓	↑	↑		Tartous	6,800	-3	62	157	↓	↑	↑	
	Aleppo	1,666	-2	38	160	↓	↑	↑		Aleppo	2,143	-20	83	263	↓	↑	↑	
	Damascus	2,006	-7	52	305	↓	↑	↑		Damascus	2,261	-16	208	562	↓	↑	↑	
	Dar'a	1,950	-0.2	48	222	↓	↑	↑		Dar'a	1,982	-22	116	385	↓	↑	↑	
	Deir-ez-Zor	1,232	-4	NA	NA	↓	↔	↔		Deir-ez-Zor	1,097	-6	91	266	↓	↑	↑	
	Hama	1,400	75	27	155	↑	↑	↑		Hama	1,695	-44	88	324	↓	↑	↑	
	Al-Hasakeh	1,013	-27	10	84	↓	↗	↑		Al-Hasakeh	235	3	57	57	↗	↑	↑	
	Homs	1,400	75	27	155	↑	↑	↑		Homs	1,892	-37	110	373	↓	↑	↑	
	Idleb	1,383	-2	22	124	↓	↗	↑		Idleb	2,215	-10	43	177	↓	↑	↑	
	Lattakia	1,631	30	NA	NA	↑	↔	↔		Lattakia	1,685	-27	95	285	↓	↑	↑	
	Quneitra	2,067	-4	15	15	↓	↗	↗		Quneitra	1,890	-25	122	431	↓	↑	↑	
Bulgur (kg)	Ar-Raqqa	1,595	-8	NA	NA	↓	↔	↔	US Dollar exchange rate (parallel market, \$1)	Ar-Raqqa	875	21	213	275	↗	↑	↑	
	Rural Damascus	2,033	-3	54	311	↓	↑	↑		Rural Damascus	2,279	-5	255	473	↓	↑	↑	
	As-Sweida	2,183	-8	53	109	↓	↑	↑		As-Sweida	2,360	-19	166	484	↓	↑	↑	
	Tartous	1,696	49	NA	NA	↑	↔	↔		Tartous	1,750	-24	278	367	↓	↑	↑	
	Aleppo	1,804	-6	37	143	↓	↑	↑		Aleppo	3,099	2	-16	-49	↗	↓	↓	
	Damascus	2,131	-12	53	147	↓	↑	↑		Damascus	3,145	1	-15	-49	↗	↓	↓	
	Dar'a	2,088	-8	63	133	↓	↑	↑		Dar'a	3,086	1	-15	-50	↗	↓	↓	
	Deir-ez-Zor	1,628	-11	37	118	↓	↑	↑		Deir-ez-Zor	3,138	1	-14	-48	↗	↓	↓	
	Hama	1,973	-7	39	122	↓	↑	↑		Hama	3,111	2	-14	-47	↗	↓	↓	
	Al-Hasakeh	1,789	-5	17	73	↓	↗	↑		Al-Hasakeh	3,093	0.4	-16	-47	↗	↓	↓	
	Homs	2,267	7	58	156	↗	↑	↑		Homs	3,111	2	-14	-47	↗	↓	↓	
	Idleb	1,503	1	47	126	↗	↑	↑		Idleb	3,098	0.4	-17	-49	↗	↓	↓	
Butane Cylinder (parallel market, 25 kg)	Lattakia	2,344	6	61	161	↗	↑	↑	Eggs (carton)	Lattakia	3,109	2	-14	-49	↗	↓	↓	
	Quneitra	1,925	-4	65	189	↓	↑	↑		Quneitra	3,110	0	-15	-51	↗	↓	↓	
	Ar-Raqqa	1,873	6	44	114	↗	↑	↑		Ar-Raqqa	3,114	-0.2	-17	-48	↓	↓	↓	
	Rural Damascus	2,121	-11	53	136	↓	↑	↑		Rural Damascus	3,139	-0.1	-16	-49	↓	↓	↓	
	As-Sweida	2,500	-	79	171	↔	↑	↑		As-Sweida	3,115	1	-16	-50	↗	↓	↓	
	Tartous	2,075	-11	37	129	↓	↑	↑		Tartous	3,109	2	-14	-49	↗	↓	↓	
	Aleppo	35,448	3	67	184	↗	↑	↑		Aleppo	6,331	1	24	271	↗	↑	↑	
	Damascus	24,528	15	63	89	↗	↑	↑		Damascus	6,981	-0.4	33	193	↓	↑	↑	
	Dar'a	31,993	-3	-14	69	↓	↓	↑		Dar'a	6,885	-2	32	230	↓	↑	↑	
	Deir-ez-Zor	22,304	-7	72	110	↓	↑	↑		Deir-ez-Zor	6,996	-4	42	204	↓	↑	↑	
	Hama	24,625	-31	217	76	↓	↑	↑		Hama	6,880	1	38	224	↗	↑	↑	
	Al-Hasakeh	10,802	-5	53	96	↓	↑	↑		Al-Hasakeh	6,134	1	23	152	↗	↗	↑	
Cheese (kg)	Homs	26,851	-25	247	92	↓	↑	↑	Eggplant (kg)	Homs	6,679	-2	34	216	↓	↑	↑	
	Idleb	31,921	-3	38	217	↓	↑	↑		Idleb	6,151	-2	17	367	↓	↗	↑	
	Lattakia	29,200	-3	95	93	↓	↑	↑		Lattakia	6,865	4	26	194	↗	↑	↑	
	Quneitra	28,422	16	142	225	↗	↑	↑		Quneitra	6,429	-1	29	264	↓	↑	↑	
	Ar-Raqqa	34,583	24	198	398	↗	↑	↑		Ar-Raqqa	6,245	-4	26	178	↓	↑	↑	
	Rural Damascus	22,977	-2	59	70	↓	↑	↑		Rural Damascus	6,879	-3	30	198	↓	↑	↑	
	As-Sweida	23,906	-3	39	98	↓	↑	↑		As-Sweida	7,419	-2	38	206	↓	↑	↑	
	Tartous	29,500	-6	124	93	↓	↑	↑		Tartous	6,736	-1	30	190	↓	↑	↑	
	Aleppo	6,619	1	29	209	↗	↑	↑		Aleppo	932	-39	49	97	↓	↑	↑	
	Damascus	6,222	5	45	235	↗	↑	↑		Damascus	679	-29	88	6	↓	↑	↗	
	Dar'a	5,602	-2	23	233	↓	↗	↑		Dar'a	808	-31	101	105	↓	↑	↑	
	Deir-ez-Zor	6,188	-4	31	171	↓	↑	↑		Deir-ez-Zor	739	-36	59	66	↓	↑	↑	
Chickpeas (kg)	Hama	6,233	13	29	213	↗	↑	↑	Hama	476	-47	-23	0	↓	↓	↗		
	Al-Hasakeh	5,333	1	63	283	↗	↑	↑	Al-Hasakeh	2,156	6	262	294	↗	↑	↑		
	Homs	5,629	2	16	183	↗	↗	↑	Homs	605	-33	-3	26	↓	↓	↑		
	Idleb	6,640	-1	26	253	↓	↑	↑	Idleb	1,382	-31	33	95	↓	↑	↑		
	Lattakia	6,263	4	4	100	↗	↗	↑	Lattakia	878	-14	51	46	↓	↑	↑		
	Quneitra	5,567	-2	24	184	↓	↗	↑	Quneitra	794	-24	112	107	↓	↑	↑		
	Ar-Raqqa	5,903	4	51	160	↗	↑	↑	Ar-Raqqa	1,158	-39	145	71	↓	↑	↑		
	Rural Damascus	5,996	-1	54	251	↓	↑	↑	Rural Damascus	661	-32	79	14	↓	↑	↗		
	As-Sweida	7,433	-3	59	249	↓	↑	↑	As-Sweida	857	-30	139	70	↓	↑	↑		
	Tartous	6,334	10	34	131	↗	↑	↑	Tartous	980	-15	76	138	↓	↑	↑		
	Aleppo	1,990	-7	36	247	↓	↑	↑	Fish (tuna, canned) - 160 gm	Aleppo	2,014	-9	46	221	↓	↑	↑	
	Damascus	3,061	-2	86	263	↓	↑	↑		Damascus	2,611	-3	54	228	↓	↑	↑	
Dar'a	2,357	-3	69	251	↓	↑	↑	Dar'a		2,656	-4	57	346	↓	↑	↑		
Deir-ez-Zor	1,251	-9	7	46	↓	↗	↑	Deir-ez-Zor		2,280	-8	62	348	↓	↑	↑		
Hama	3,020	4	73	285	↗	↑	↑	Hama		2,490	-28	11	162	↓	↗	↑		
Al-Hasakeh	1,701	-8	-3	67	↓	↓	↑	Al-Hasakeh		2,146	-3	9	138	↓	↗	↑		
Homs	2,948	1	68	273	↗	↑	↑	Homs		2,439	-29	9	211	↓	↗	↑		
Idleb	1,831	2	37	213	↗	↑	↑	Idleb		2,070	-3	57	168	↓	↑	↑		
Lattakia	3,060	3	97	210	↗	↑	↑	Lattakia		2,770	5	48	256	↗	↑	↑		
Quneitra	2,263	-6	116	319	↓	↑	↑	Quneitra		2,308	-4	41	259	↓	↑	↑		
Ar-Raqqa	3,600	15	135	269	↗	↑	↑	Ar-Raqqa		2,468	5	40	265	↗	↑	↑		
Rural Damascus	2,857	-7	99	217	↓	↑	↑	Rural Damascus		2,488	-7	42	269	↓	↑	↑		
As-Sweida	3,000	4	137	289	↗	↑	↑	As-Sweida	2,490	-2	48	207	↓	↑	↑			
Tartous	3,096	3	83	169	↗	↑	↑	Tartous	2,783	-11	43	232	↓	↑	↑			
Key:	↑	Price increase equal to or greater than 25 percent																
	↗	Price increase between 0.1 and 25 percent																
	↔																	



Commodity	Governorate	Current Price	Price change 1M (%)	Price change 6 M (%)	Price change 12 M (%)	Average Change 1M	Average Change 6 M	Average Change 12 M	Commodity	Governorate	Current Price	Price change 1M (%)	Price change 6 M (%)	Price change 12 M (%)	Average Change 1M	Average Change 6 M	Average Change 12 M	
Iodised salt (kg)	Aleppo	730	-8	34	133	↓	↑	↑	Sheep 2Y old Male (head)	Aleppo	492,173	0.2	42	80	↗	↑	↑	
	Damascus	400	-2	72	271	↓	↑	↑		Damascus	552,083	2	37	74	↗	↑	↑	
	Dar'a	567	-1	85	249	↓	↑	↑		Dar'a	472,563	-14	37	60	↓	↑	↑	
	Deir-ez-Zor	500	4	208	100	↗	↑	↑		Deir-ez-Zor	488,185	-15	8	106	↓	↗	↑	
	Hama	720	-28	-3	106	↓	↓	↑		Hama	493,750	-18	27	84	↓	↑	↑	
	Al-Hasakeh	484	-1	21	187	↓	↗	↑		Al-Hasakeh	435,417	-10	4	70	↓	↗	↑	
	Homs	925	-8	23	164	↓	↗	↑		Homs	594,405	-1	53	120	↓	↑	↑	
	Idleb	426	-3	-1	219	↓	↓	↑		Idleb	502,733	-13	21	78	↓	↗	↑	
	Lattakia	833	20	121	520	↗	↑	↑		Lattakia	557,500	18	48	135	↗	↑	↑	
	Quneitra	440	-0.5	41	210	↓	↑	↑		Quneitra	469,313	-5	26	56	↓	↑	↑	
	Ar-Raqqa	723	0	95	329	↗	↑	↑		Ar-Raqqa	480,000	-3	15	80	↓	↗	↑	
	Rural Damascus	440	-0.6	90	315	↓	↑	↑		Rural Damascus	523,113	-4	37	63	↓	↑	↑	
Red split lentils (kg)	As-Sweida	843	-1	135	319	↓	↑	↑	Sugar (kg)	As-Sweida	503,750	0	26	154	↓	↑	↑	
	Tartous	851	162	209	519	↑	↑	↑		Tartous	533,200	12	47	118	↗	↑	↑	
	Aleppo	2,732	-9	50	157	↓	↑	↑		Aleppo	1,818	-10	29	154	↓	↑	↑	
	Damascus	2,975	6	106	211	↗	↑	↑		Damascus	1,778	-20	35	160	↓	↑	↑	
	Dar'a	2,677	2	100	130	↗	↑	↑		Dar'a	1,903	-11	36	193	↓	↑	↑	
	Deir-ez-Zor	2,440	-5	109	255	↓	↑	↑		Deir-ez-Zor	1,804	-12	15	129	↓	↗	↑	
	Hama	2,682	-11	73	160	↓	↑	↑		Hama	1,901	-2	41	205	↓	↑	↑	
	Al-Hasakeh	1,766	-8	13	47	↓	↗	↑		Al-Hasakeh	1,713	-7	13	76	↓	↗	↑	
	Homs	3,008	0.3	93	190	↗	↑	↑		Homs	1,864	-4	38	198	↓	↑	↑	
	Idleb	2,254	-4	24	79	↓	↗	↑		Idleb	2,012	-5	23	128	↓	↗	↑	
	Lattakia	3,200	0	91	198	↔	↑	↑		Lattakia	2,209	0.4	51	250	↗	↑	↑	
	Quneitra	2,783	8	101	286	↗	↑	↑		Quneitra	1,808	-11	36	183	↓	↑	↑	
Meat (beef, kg)	Ar-Raqqa	4,000	1	130	249	↗	↑	↑	Tomato (kg)	Ar-Raqqa	1,808	-15	25	84	↓	↑	↑	
	Rural Damascus	2,948	3	101	213	↗	↑	↑		Rural Damascus	1,790	-21	36	159	↓	↑	↑	
	As-Sweida	2,979	2	115	229	↗	↑	↑		As-Sweida	2,192	-9	55	231	↓	↑	↑	
	Tartous	3,575	0	122	218	↔	↑	↑		Tartous	2,245	-7	58	249	↓	↑	↑	
	Aleppo	18,000	-3	21	123	↓	↗	↑		Aleppo	952	-26	-2	53	↓	↓	↑	
	Damascus	21,486	3	54	138	↗	↑	↑		Damascus	571	-32	-10	-3	↓	↓	↓	
	Dar'a	19,072	-2	63	121	↓	↑	↑		Dar'a	689	-30	21	13	↓	↗	↗	
	Deir-ez-Zor	16,729	16	27	107	↗	↑	↑		Deir-ez-Zor	673	-26	-19	7	↓	↓	↗	
	Hama	19,600	-6	39	140	↓	↑	↑		Hama	573	-42	-43	-25	↓	↓	↓	
	Al-Hasakeh	17,818	7	19	95	↗	↗	↑		Al-Hasakeh	1,890	4	101	132	↗	↑	↑	
	Homs	22,048	6	55	169	↗	↑	↑		Homs	573	-43	-43	-25	↓	↓	↓	
	Idleb	18,312	10	32	144	↗	↑	↑		Idleb	1,772	-22	30	167	↓	↑	↑	
White beans (kg)	Lattakia	24,720	6	84	163	↗	↑	↑	Unskilled Labor wage*	Lattakia	1,072	7	43	73	↗	↑	↑	
	Quneitra	20,000	2	53	118	↗	↑	↑		Quneitra	653	-20	38	19	↓	↑	↗	
	Ar-Raqqa	15,500	7	61	141	↗	↑	↑		Ar-Raqqa	1,276	-22	48	62	↓	↑	↑	
	Rural Damascus	20,744	-1	58	139	↓	↑	↑		Rural Damascus	653	-27	9	-10	↓	↗	↓	
	As-Sweida	20,000	7	64	141	↗	↑	↑		As-Sweida	800	-32	25	9	↓	↗	↗	
	Tartous	24,700	10	93	158	↑	↑	↑		Tartous	1,033	-17	22	48	↓	↗	↑	
	Aleppo	4,712	-12	20	169	↓	↗	↑		Wheat Flour (kg)	Aleppo	6,560	2	73	84	↗	↑	↑
	Damascus	6,422	-9	57	218	↓	↑	↑			Damascus	8,708	2	36	159	↗	↑	↑
	Dar'a	6,733	-2	47	253	↓	↑	↑			Dar'a	5,781	0.2	41	93	↗	↑	↑
	Deir-ez-Zor	5,900	-4	53	240	↓	↑	↑			Deir-ez-Zor	3,905	13	38	5	↗	↑	↗
	Hama	6,032	-6	64	188	↓	↑	↑			Hama	6,103	22	33	144	↗	↑	↑
	Al-Hasakeh	4,028	-4	37	123	↓	↑	↑			Al-Hasakeh	5,188	-3	4	111	↓	↗	↑
Homs	6,213	-4	71	195	↓	↑	↑	Homs	6,095		22	36	144	↗	↑	↑		
Idleb	4,236	2	48	384	↗	↑	↑	Idleb	7,149		-21	33	33	↓	↑	↑		
Lattakia	7,344	10	58	281	↗	↑	↑	Lattakia	8,200		17	37	152	↗	↑	↑		
Quneitra	5,533	-5	207	276	↓	↑	↑	Quneitra	6,956		1	80	191	↗	↑	↑		
Ar-Raqqa	4,420	-17	46	108	↓	↑	↑	Ar-Raqqa	6,467		6	39	72	↗	↑	↑		
Rural Damascus	6,314	-9	56	231	↓	↑	↑	Rural Damascus	8,274		5	51	117	↗	↑	↑		
Vegetable oil (L)	As-Sweida	7,394	-1	194	377	↓	↑	↑	Pasta (spaghetti)	As-Sweida	5,354	5	74	114	↗	↑	↑	
	Tartous	6,579	-7	41	276	↓	↑	↑		Tartous	8,600	-2	46	187	↓	↑	↑	
	Aleppo	6,533	-7	80	316	↓	↑	↑		Aleppo	1,719	-10	53	199	↓	↑	↑	
	Damascus	7,650	-8	91	386	↓	↑	↑		Damascus	1,942	-12	67	169	↓	↑	↑	
	Dar'a	7,368	-12	80	343	↓	↑	↑		Dar'a	1,974	1	52	185	↗	↑	↑	
	Deir-ez-Zor	6,820	-8	100	312	↓	↑	↑		Deir-ez-Zor	1,713	-1	29	163	↓	↑	↑	
	Hama	7,316	-5	81	343	↓	↑	↑		Hama	2,002	-0.04	56	238	↓	↑	↑	
	Al-Hasakeh	5,153	-5	77	197	↓	↑	↑		Al-Hasakeh	1,625	-2	27	84	↓	↑	↑	
	Homs	7,471	-3	84	351	↓	↑	↑		Homs	2,161	8	68	263	↗	↑	↑	
	Idleb	5,897	-5	93	350	↓	↑	↑		Idleb	1,460	0.5	42	158	↗	↑	↑	
	Lattakia	8,206	1	100	376	↗	↑	↑		Lattakia	2,337	21	97	248	↗	↑	↑	
	Quneitra	7,329	-9	82	339	↓	↑	↑		Quneitra	1,794	-3	65	146	↓	↑	↑	
Parsley (packet)	Ar-Raqqa	6,357	-8	121	285	↓	↑	↑	Yogurt (kg)	Ar-Raqqa	2,000	6	97	198	↗	↑	↑	
	Rural Damascus	7,514	-11	91	428	↓	↑	↑		Rural Damascus	1,923	-7	71	213	↓	↑	↑	
	As-Sweida	7,548	-13	75	388	↓	↑	↑		As-Sweida	2,275	-1	52	235	↓	↑	↑	
	Tartous	8,072	-2	97	403	↓	↑	↑		Tartous	2,295	1	90	267	↗	↑	↑	
	Aleppo	210	-3	21	27	↓	↗	↑		Aleppo	3,505	-1	99	284	↓	↑	↑	
	Damascus	199	-1	123	110	↓	↑	↑		Damascus	2,958	-2	93	209	↓	↑	↑	
	Dar'a	203	15	2	103	↗	↗	↑		Dar'a	2,877	-6	83	259	↓	↑	↑	
	Deir-ez-Zor	147	0.2	7	57	↗	↗	↑		Deir-ez-Zor	2,496	-14	131	78	↓	↑	↑	
	Hama	235	18	31	152	↗	↑	↑		Hama	5,200	13	211	247	↗	↑	↑	
	Al-Hasakeh	209	3	7	109	↗	↗	↑		Al-Hasakeh	1,058	-53	-34	-5	↓	↓	↓	
	Homs	463	131	165	393	↑	↑	↑		Homs	5,193	13	210	246	↗	↑	↑	
	Idleb	193	-5	-28	-19	↓	↓	↓		Idleb	2,098	-4	45	130	↓	↑	↑	
Rice (kg)	Lattakia	228	14	36	114	↗	↑	↑	Yogurt (kg)	Lattakia	4,110	37	74	157	↑	↑	↑	
	Quneitra	200	14	39	149	↗	↑	↑		Quneitra	2,897	-1	103	289	↓	↑	↑	
	Ar-Raqqa	215	13	33	115	↗	↑	↑		Ar-Raqqa	1,700	-31	-12.6	18	↓	↓	↗	
	Rural Damascus	199	-1	87	111	↓	↑	↑		Rural Damascus	2,948	2	90	265	↗	↑	↑	
	As-S																	