



@WFP/Jessica Lawson

Highlights

The national average price of WFP's standard reference food basket decreased by one percent between May and June 2021, reaching SYP 165,932 (USD 66 at the official exchange rate of SYP 2,500/USD).

The decrease in water levels in the Euphrates River negatively affected production levels and prices of vegetables in its directly surrounding areas. On average in Ar-Raqqa and Deir-ez-Zor, between April and June 2021 the price of tomato and eggplant decreased by 24 and 11 percentage points less than over the past three-year-average for April to June prices.

In June 2021, the informal exchange rate weakened m-o-m, and the Syrian pound lost one percent of its value reaching SYP 3,156/USD. The official exchange rate remained unchanged at SYP 2,500/USD.

Key-food item prices such as sugar and fresh eggs increased by three and 12 percent between May and June 2021, reaching SYP 1,985/kg and SYP 7,453/30 egg units, respectively.

For further information, please contact:

Jan Michiels at Jan.Michiels@wfp.org

Pakinam Moussa at Pakinam.Moussa@wfp.org

Standard Food Basket

In June 2021, the national average price of a standard reference food basket¹ decreased by one percent since May 2021, reaching SYP 165,932. The national average food basket price was 49 percent higher than that of December 2020 (six months ago) and was 102 percent higher compared to June 2020 (Figure 1). This is the third month-on-month (m-o-m) decrease in a row in the food basket price since August 2020. The decrease is linked greater government enforcement in monitoring market prices ensuring traders limit price increases.

M-o-m, five governorates recorded a decreasing average reference food basket price in June 2021. The highest m-o-m decrease of 13 percent was reported in Tartous reaching SYP 168,862. The lowest m-o-m decrease, of one percent, was reported in Deir-ez-Zor at SYP 152,753. On the other hand, six governorates recorded an increasing average reference food basket price. The highest m-o-m increase of five percent was recorded in Hama reaching SYP 166,402. The reference food basket price in Aleppo, Damascus and Rural Damascus remained unchanged m-o-m.

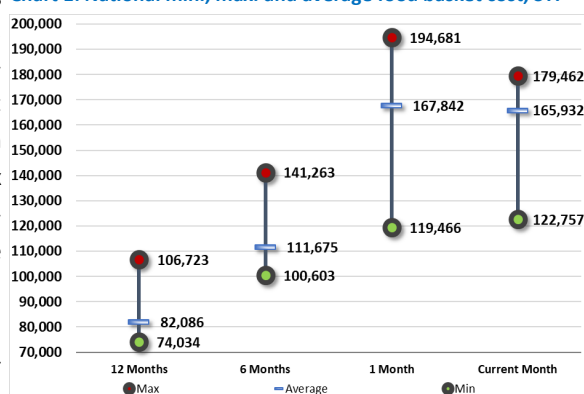
Year-on-year (y-o-y), the price of the reference food basket has significantly increased across all 14 governorates. Lattakia recorded the highest increase (up 134 percent), while Al-Hasakeh recorded the lowest increase (up 38 percent).

The gap between the highest and lowest average food basket prices decreased by 25 percent from SYP 75,216 in May 2021 to SYP 56,705 in June 2021 and by 73 percent since June 2020 (Chart 1).

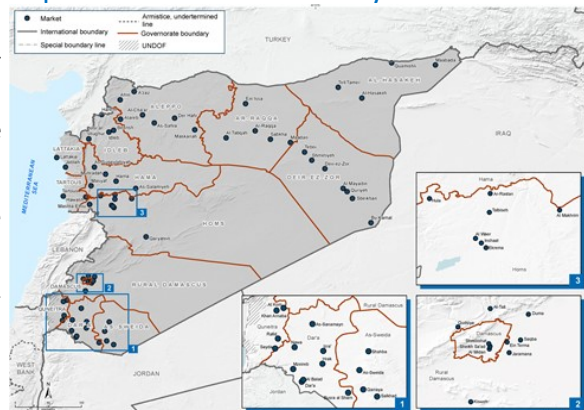
Figure 1: Food basket cost and changes, SYP

Governorate	Price June 2021	1 month change	6 months changes	12 months changes
Aleppo	SYP 161,703	0%	35%	111%
Damascus	SYP 173,620	0%	63%	107%
Dar'a	SYP 168,555	1%	58%	102%
Deir-ez-Zor	SYP 152,753	-1%	52%	95%
Hama	SYP 166,402	5%	53%	128%
Al-Hasakeh	SYP 122,757	3%	18%	38%
Homs	SYP 163,800	-2%	50%	121%
Idleb	SYP 179,462	3%	27%	68%
Lattakia	SYP 175,356	-6%	47%	134%
Ar-Raqqa	SYP 176,732	1%	62%	107%
Rural Damascus	SYP 169,492	0%	58%	101%
As-Sweida	SYP 167,399	-4%	57%	123%
Tartous	SYP 168,862	-13%	40%	114%
Quneitra	SYP 176,151	2%	68%	103%
Average	SYP 165,932	-1%	49%	102%

Chart 1: National min., max. and average food basket cost, SYP



Map 1: Location of markets monitored by WFP



1. The standard food basket is a group of essential food commodities. In Syria, the food basket is set at a group of dry goods providing 2,060 kcal a day for a family of five during a month. The basket includes 37 kg bread, 19 kg rice, 19 kg lentils, 5 kg of sugar, and 7 litres of vegetable oil.

Impact of low water levels in the Euphrates on local markets

Overview

The Euphrates river enters Syria in Jarabulus (Aleppo) and flows through the governorates of Aleppo, Ar-Raqqa and Deir-Ez-Zor for a total distance of 604 km, before reaching the Iraqi border in Al-Bukamal. The two main dams of Tishren and Tabka form two consecutive lakes, with the largest one being Lake Assad, covering a total area of 525 km². The population in the Euphrates basin is heavily dependent on the river for drinking water and agriculture. Moreover, the dams are the only source for electricity, given that alternative power stations have been damaged. Additionally, the water canals starting from Lake Assad irrigate agricultural areas as far as the eastern outskirts of the city of Aleppo. The surface level of the Euphrates River in and around Lake Assad in June 2021 have decreased compared to June 2020 and June 2008, noting that 2007-2008 saw one of the worst droughts in Syria that was mainly driven by below average precipitation rather than hydrological causes (i.e. river water levels). The causes for the reduced water in the dams and water flow in the Euphrates river in 2021 is linked to reduced precipitation as well as reduced amounts of water flowing from Turkey into Syria. The reduced water in the Euphrates is directly affecting agricultural crop production in the region and as a result their prices³.

Impact on retail prices of vegetables

The decrease in water levels in the Euphrates negatively affected the production of vegetables alongside the river, and therefore the availability of main vegetables decreased especially in Eastern Ar-Raqqa and Deir-ez-Zor. The power cuts also affected small farmers in Northeast Syria who mainly depend on electricity for irrigation.

The production of vegetables between June and July of each year usually increases, and the prices of these items decrease; however, this was not the case this year due to the reduced production of vegetables. The closure of cross-line points between the Kurdish areas and government-held areas was also a reason leading to the reduced supply since many food commodities such as fruits and vegetables arrive in the Northeast Syria region from Aleppo and Syria's coastal region.

The main vegetables cultivated along the river are tomatoes and eggplants. Planting of vegetables starts in April and their harvest is typically between June and August of each year, leading to a reduction in local prices for these commodities. Nevertheless, this year, the decrease in prices was not as noticeable as usual due to the drier than average year and especially due to the low water levels in the Euphrates river. Power cuts have also reduced the amount of water used for crop irrigation.

On average in Ar-Raqqa and Deir-ez-Zor, when looking at the decrease percentage in prices between April (the beginning of planting period) and June (the beginning of harvest season), tomatoes' price decreased by 38 percent in 2021 compared to 62 percent during the same period (April to June) over the past three-year-average price (2018 to 2020).

Similarly, the price of eggplants decreased by 46 percent between April (the beginning of planting period) and June (the beginning of harvest season) in 2021 compared to 57 percent during the same period (April to June) of the past three-year-average price (2018 to 2020).

On average in Ar-Raqqa and Deir-ez-Zor, the price of tomatoes reached SYP 788/kg in June 2021, increasing in price by 348 percent compared to the past three-year-average price for June. Moreover, the price of eggplants reached SYP 824/kg in June 2021, increasing in price by 417 percent compared to the past three-year-average price for June.

Map 2: Northeast Syria markets by the Euphrates river

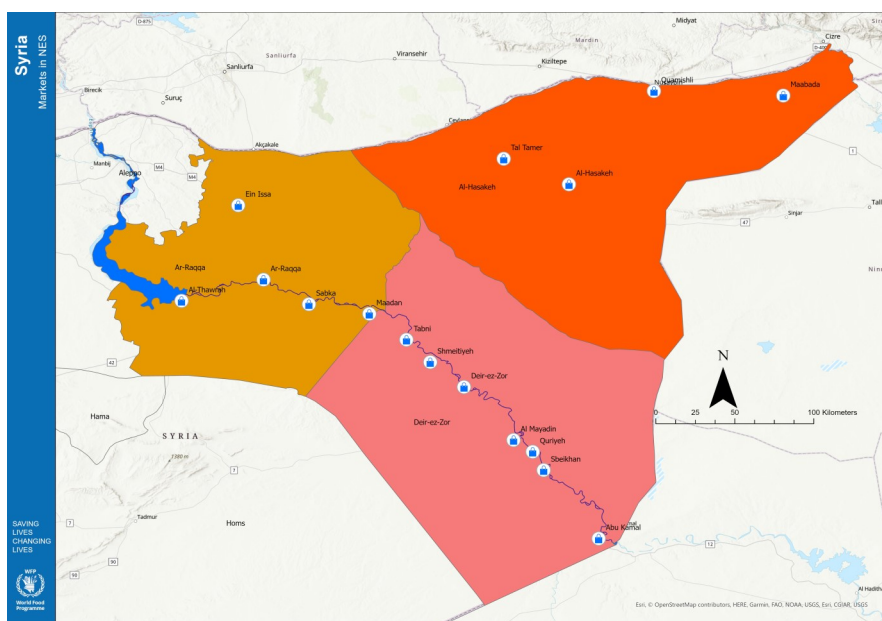
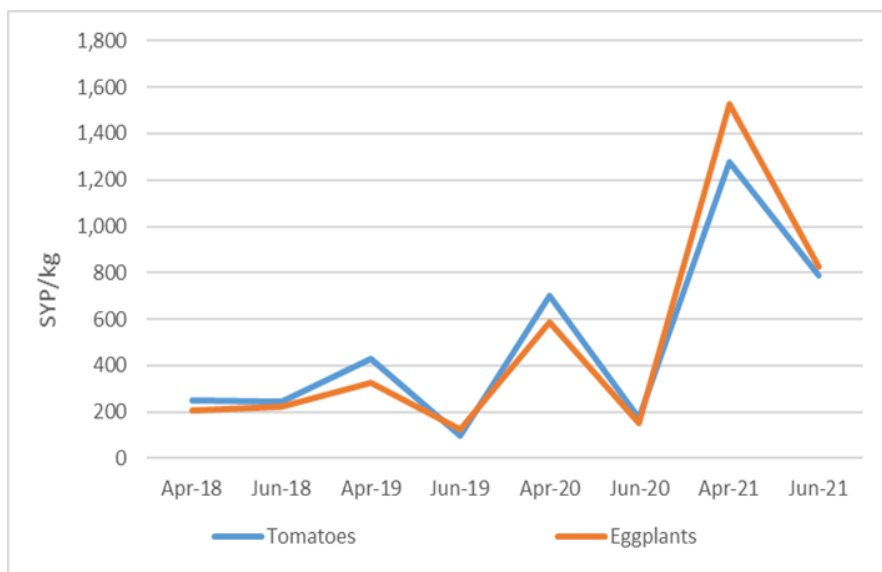


Chart 2: Retail vegetables prices in Northeast Syria, SYP



Source: WFP

2. "Tensions rise in north-eastern Syria over water shortages." *The Economist Intelligence Unit*, 25 May 2021, <http://country.eiu.com/article.aspx?articleid=901060473&Country=Syria&topic=Economy&subtopic=Forecast&subsubtopic=Economic+growth>

Legend on regions of analysis: 'Northwest'=Aleppo; 'Cross-border'=Idleb & Aleppo [A'zaz, Atarib & Afrin]; 'Coastal'=Lattakia & Tartous; 'Northeast'=Ar-Raqqqa, Al-Hasakeh & Deir-ez-Zor; 'Middle'=Damascus, Rural Damascus, Hama, Homs and Idleb [Senjar]; 'South'=Dar'a, As-Sweida & Quneitra.

Staple cereals retail prices

Wheat Flour

M-o-m, the national average retail price of wheat flour throughout Syria decreased by three percent, reaching SYP 1,870/kg, while y-o-y, the wheat flour price increased by 99 percent. As-Sweida recorded the highest wheat flour price in June at SYP 2,198/kg (down three percent m-o-m), while Idleb recorded the lowest price of SYP 1,488/kg (up two percent m-o-m).

Broken down by regions, northwest Syria recorded the highest retail price at SYP 2,226/kg (up seven percent m-o-m), followed by the coastal region at SYP 1,966/kg (down 15 percent m-o-m). While the cross-border region recorded the lowest retail price at SYP 1,410/kg (up one percent m-o-m), followed by northeast Syria at SYP 1,834/kg (up four percent m-o-m) - Chart 3.

Rice

M-o-m, the national average retail price of Egyptian white rice decreased by one percent reaching SYP 2,474/kg in June 2021, instead y-o-y, the price of Egyptian white rice increased by 74 percent. Quneitra recorded the highest price at SYP 2,917/kg (up 0.4 percent m-o-m), while Al-Hasakeh recorded the lowest price at SYP 2,023/kg (up one percent m-o-m).

M-o-m, the southern region recorded the highest price at SYP 2,690/kg (down two percent m-o-m), followed by the coastal region at SYP 2,537/kg (down nine percent m-o-m). Northeast Syria recorded the lowest average Egyptian white rice price by region at SYP 2,217/kg (unchanged m-o-m), followed by northwest Syria at SYP 2,352/kg (down one percent m-o-m) - Chart 4.

Bulgur

M-o-m, the national average retail price of bulgur remained unchanged at SYP 1,989/kg in June 2021, instead y-o-y, the price of bulgur increased by 75 percent. As-Sweida recorded the highest bulgur retail price at SYP 2,390/kg (down four percent m-o-m), while Idleb recorded the lowest price at SYP 1,478/kg (down two percent m-o-m).

The coastal region recorded the highest average bulgur price by region at SYP 2,152/kg (down three percent m-o-m), followed by the southern region at SYP 2,149/kg (unchanged m-o-m). On the other hand, the cross-border region recorded the lowest average bulgur price at SYP 1,391/kg (down four percent m-o-m), followed by northeast Syria at SYP 1,810/kg (up three percent m-o-m) - Chart 5.

Bread*

The national average price of subsidized bread in June 2021 remained unchanged m-o-m at SYP 129/bundle, while y-o-y, the price has increased by 153 percent.

Moreover, the price of commercial bread increased by five percent m-o-m and by 93 percent y-o-y, reaching SYP 1,765/bundle. As-Sweida recorded the highest commercial bread price of SYP 2,069/bundle (down five percent m-o-m), while Al-Hasakeh recorded the lowest price of SYP 1,021/bundle (up one percent m-o-m).

Broken down by regions, northwest Syria recorded the highest price of SYP 1,973/bundle (down one percent m-o-m), while northeast Syria recorded the lowest price at SYP 1,221/bundle (up one percent m-o-m).

Chart 3: Retail Prices of Wheat Flour, SYP

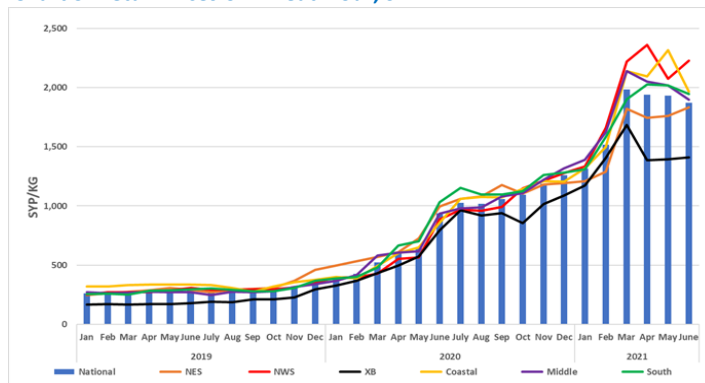


Chart 4: Retail Prices of Rice, SYP

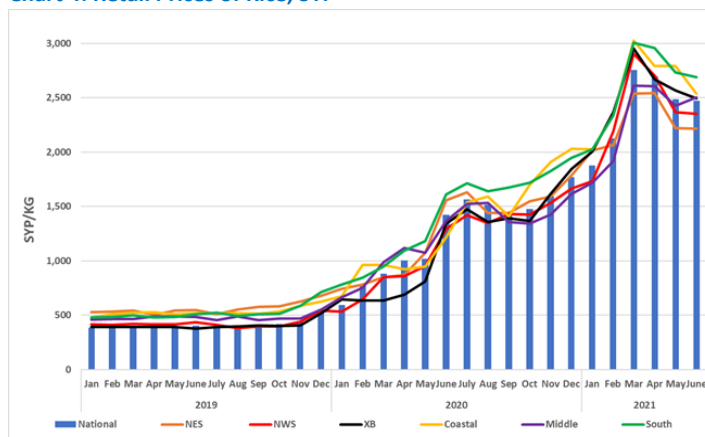


Chart 5: Retail Prices of Bulgur, SYP

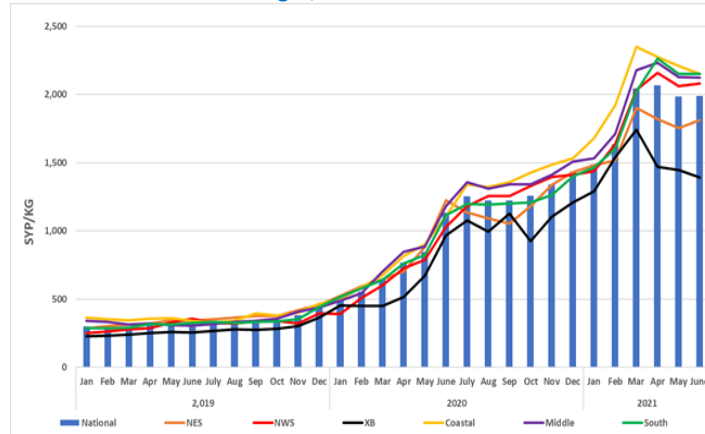
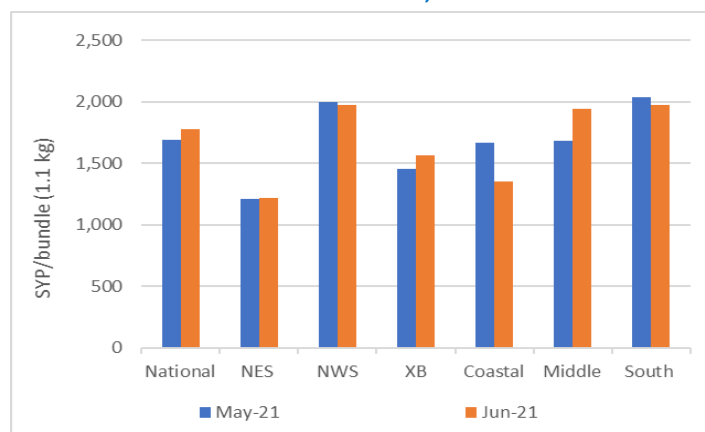


Chart 6: Retail Prices of commercial bread, SYP



Source: WFP Field Offices

*Starting from March 2021, WFP-monitored commercial bread has been switched from resold public bread bundles to commercial bread sold at shops. Prices for the past year have been adjusted to include commercial bread resold from shops. Moreover, all prices have been adjusted to reflect bread bundle size of 1.1 kg instead of 1.3 kg since November 2020.

Exchange rate**

In June 2021, the informal SYP/USD exchange rate continued its current relatively stable trend as it depreciated m-o-m by one percent, reaching SYP 3,156/USD. Moreover, compared to a year ago, the Syrian pound depreciated by 21 percent.

The highest informal exchange rate was reported in Damascus at SYP 3,207/USD (depreciated by two percent m-o-m), followed by Rural Damascus at SYP 3,190/USD (depreciated by two percent m-o-m). The lowest rate was reported in Al-Hasakeh at SYP 3,096/USD (unchanged m-o-m), followed by Ar-Raqqa at SYP 3,103/USD (unchanged m-o-m).

Moreover, the formal exchange rate and the UN operational rate have both remained unchanged m-o-m at SYP 2,500/USD.

Diesel

In June 2021, the formal national average price of diesel remained unchanged m-o-m at SYP 176/litre.

Moreover, the informal national average price of transport diesel decreased by ten percent m-o-m; nevertheless, it increased by 244 percent since June 2020 reaching SYP 1,612/litre. The informal price remains eight times higher than the formal price (SYP 176/litre) - Chart 7. Idleb recorded the highest informal price at SYP 2,241/litre (up one percent m-o-m), while Al-Hasakeh recorded the lowest price at SYP 254/litre (up eight percent m-o-m).

Broken down by regions, the cross-border region recorded the highest price of informal transport diesel at SYP 2,269/litre (up three percent m-o-m), while northeast Syria recorded the lowest price at SYP 770/litre (down two percent m-o-m).

Moreover, the informal national average price of heating diesel increased by two percent m-o-m. Broken down by regions, northwest Syria and the coastal region recorded the highest price at SYP 2,000/litre (up five and 19 percent m-o-m, respectively), while northeast Syria recorded the lowest price at SYP 883/litre (down four percent m-o-m).

Butane gas prices

In June 2021, the formal butane gas cylinder price (25,000 L) remained unchanged m-o-m at SYP 4,079/refill. However, compared to June 2020, the price has increased by 49 percent.

Moreover, the informal national average price of one butane gas cylinder (25,000 L) increased by three percent m-o-m, reaching SYP 28,008/refill in June 2021. Moreover, compared to June 2020, the price increased by 100 percent. Dar'a recorded the highest price at SYP 38,390/refill (up 20 percent m-o-m), while Al-Hasakeh recorded the lowest price at SYP 11,588/refill (up seven percent m-o-m).

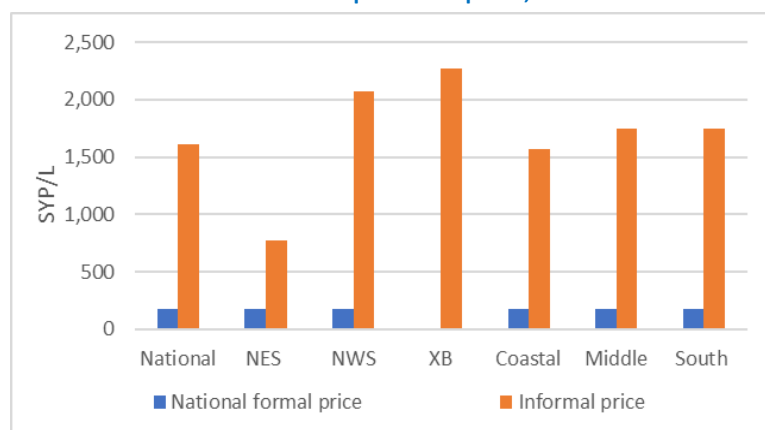
Broken down by regions, northwest Syria recorded the highest informal butane gas refill price at SYP 40,417/refill (up six percent m-o-m), followed by the cross-border region at SYP 32,201/refill (up two percent m-o-m). Northeast Syria recorded the lowest price at SYP 20,305/refill (down six percent m-o-m), followed by the middle region at SYP 25,661/refill (up three percent m-o-m).

Table 1: Informal market exchange rate, 1 USD to SYP

Governorate	June 2021	% change (m-o-m)	% change (y-o-y)
Aleppo	3,137	-1%	-21%
Al-Hasakeh	3,096	0%	-24%
Ar-Raqqa	3,103	0%	-23%
As-Sweida	3,169	-2%	-21%
Damascus	3,207	-2%	-21%
Dar'a	3,154	-2%	-21%
Deir-ez-Zor	3,188	-2%	-13%
Hama	3,170	-2%	-20%
Homs	3,170	-2%	-20%
Idleb	3,175	-2%	-19%
Lattakia	3,146	-1%	-21%
Quneitra	3,139	-1%	-21%
Rural Damascus	3,190	-2%	-21%
Tartous	3,146	-1%	-21%
National average	3,156	-1%	-21%
Official rate	2,500	0%	-50%

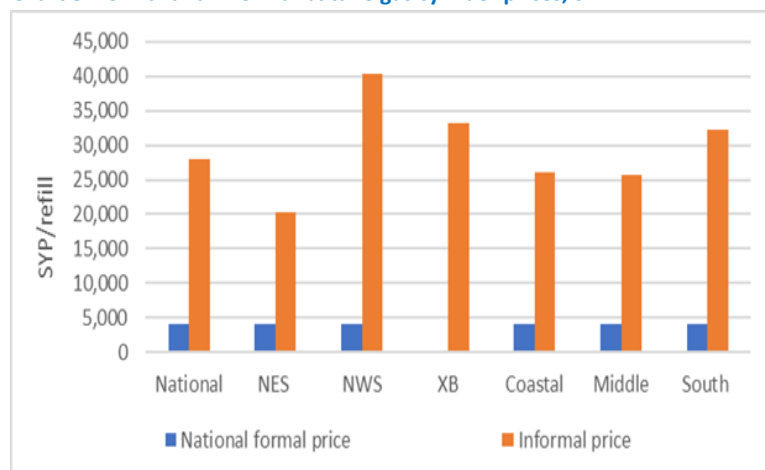
Source: WFP field offices

Chart 7: Formal and informal transport diesel prices, SYP***



Source: WFP

Chart 8: Formal and informal butane gas cylinder prices, SYP***



**When measuring exchange rates, there are two quotations. The first is the direct quotation where the US dollar is the base of measuring the change in exchange rate against the local currency. The second one is the indirect quotation where the local currency is the base of measuring the change in the exchange rate against the US dollar. The change in the exchange rate used below reflects the indirect quotation (measuring how much has the Syrian pound improved (appreciated) or worsened (depreciated) against the US dollar).

***No formal prices have been reported in the cross-border region because there is no subsidized diesel or butane gas in the region.

Terms of Trade (ToT)⁴

ToT between wage labour and wheat flour

The national average non-skilled labour wage, representing construction, off-loading and agricultural labour, was recorded at SYP 6,729/day (up five percent m-o-m) in June 2021. Moreover, the wage rate was 82 percent above its y-o-y level and 31 percent above levels recorded in December 2020 - Chart 9.

Tartous recorded the highest daily wage rate at SYP 9,805/day (up 14 percent m-o-m), while Deir-ez-Zor recorded the lowest daily wage rate at SYP 4,290/day (up ten percent m-o-m). Broken down by region, the coastal region recorded the highest wage rate of SYP 8,921/day (up six percent m-o-m), while northeast Syria recorded the lowest wage rate of SYP 5,376/day (up seven percent m-o-m).

The national average ToT between wheat flour and wage labour, a proxy indicator for purchasing power, increased by eight percent between May and June 2021, reaching 3.6 kgs of wheat flour/daily wage compared to 3.3 kgs of wheat flour in May 2021.

The national average ToT between wheat flour and wage labour decreased by 12 percent compared to December 2020 (six months ago) and by nine percent compared to June 2020. In other words, the national average daily wage of a non-skilled labourer could buy 3.6 kgs of wheat flour in June 2021 compared to 4.1 kgs in December 2020, and 3.9 kgs in June 2020.

Broken down by region, the cross-border region recorded the highest ToT at 5.2 kgs (up one percent m-o-m), while northwest Syria recorded the lowest ToT at 2.8 kgs (down seven percent m-o-m, respectively) - Chart 10.

ToT between sheep and wheat flour

The national average price of a two-year old alive male sheep decreased by three percent m-o-m. It however increased by 40 percent y-o-y, reaching SYP 488,256/sheep in June 2021 (Chart 11).

Homs recorded the highest average price of a two-year old alive male sheep at SYP 594,905/head (remaining constant m-o-m), while Lattakia recorded the lowest price at SYP 375,208/head (down 33 percent m-o-m).

Broken down by region, the cross-border region recorded the highest average price across Syria at SYP 523,019/sheep (up four percent m-o-m), followed by the middle region at SYP 514,754/sheep (down five percent m-o-m). While northwest Syria recorded the lowest price at SYP 454,875/sheep (down four percent m-o-m), followed by northeast Syria at SYP 460,072/sheep (down two percent m-o-m).

In June 2021, the ToT between an alive two-year old male sheep and wheat flour was 261 kg/sheep (unchanged m-o-m). Moreover, the ToT worsened by 30 percent since June 2020.

Broken down by region, the cross-border region recorded the highest ToT at 371 kg/sheep (up three percent m-o-m), followed by the middle region at 272 kg/sheep (up one percent m-o-m). While northwest Syria recorded the lowest ToT at 204 kg/sheep (down 11 percent m-o-m), followed by the southern region at 241 kg/sheep (down four percent m-o-m) - Chart 12.

Chart 9: Daily wage for unskilled labour, SYP

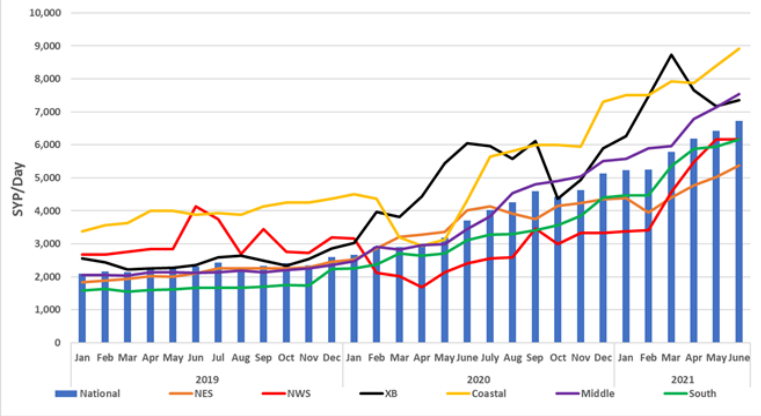


Chart 10: Terms of Trade (ToT) between wheat flour and wage rate

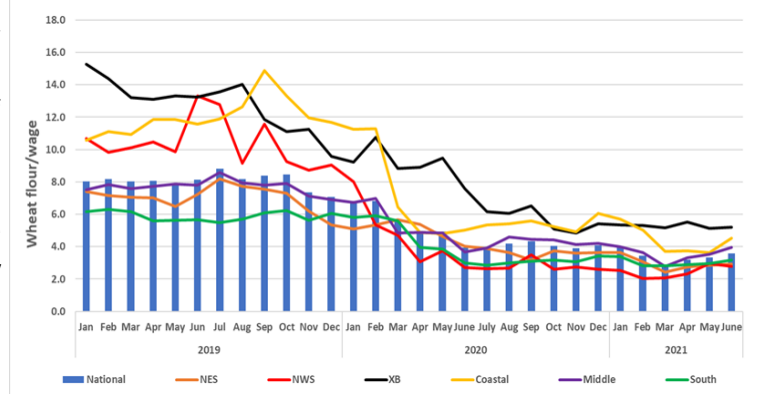


Chart 11: Price of livestock, SYP/one 2Y old sheep

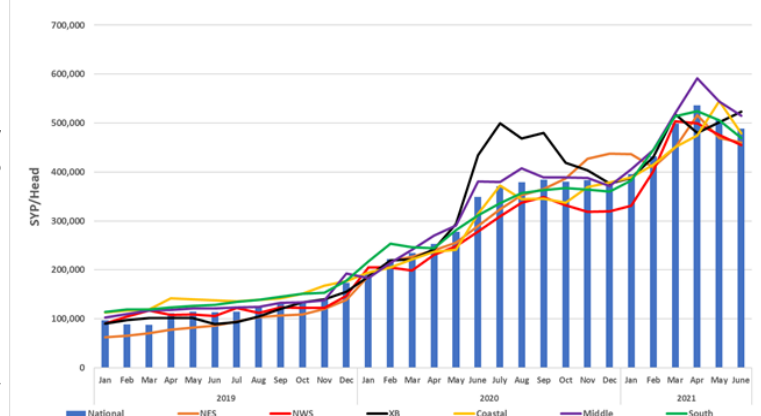
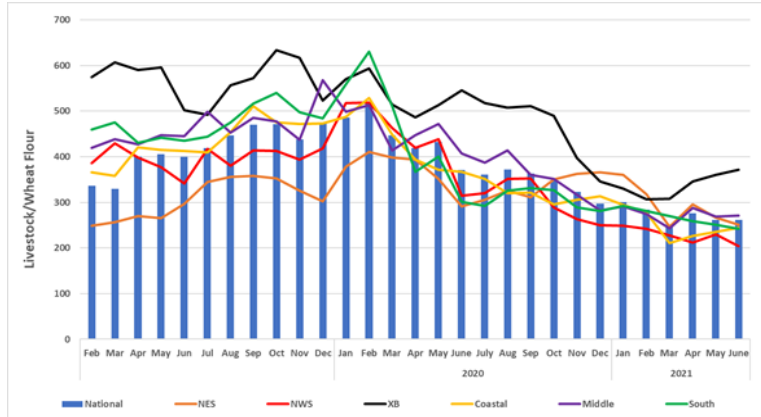


Chart 12: Terms of Trade (ToT) between wheat flour and the price of a 2 year old sheep



Source: WFP

4. The ToT are proxy indicators of the purchasing power of households that rely on livestock and/or casual labour as their main source of income for the purchase of cereals from local markets. ToT are important components of food security analysis. Changes in the terms of trade between wages/livestock and staple food commodities are indicative of the trends in purchasing power and the impact on the food security situation of households dependent on food purchases through income from daily wage labour and/or the sale of livestock.

Table 2: Prices of key COVID-19 items, week-on-week in June 2021, SYP

National average	Week 1 (SYP)	Week 2 (SYP)	Week 3 (SYP)	Week 4 (SYP)	Week 5 (SYP)	% Change (June W5 & W1)
Surgeon mask	348	340	343	338	336	-3%
Gloves (pair)	532	519	530	532	531	0%
Alcohol spray (200 ml)	2,313	2,276	2,241	2,215	2,142	-7%
Bleach bottle (L)	1,411	1,414	1,420	1,420	1,411	0%
Hand gel (50 ml)	1,094	1,097	1,089	1,088	1,132	3%
Soap bar	531	515	516	504	496	-7%

COVID-19 NFIs

Between May and June 2021, the price of all monitored COVID-19 items decreased. M-o-m, the price of surgeon masks, plastic gloves and soap bars decreased by 24, 18 and 17 percent, reaching SYP 341/mask, SYP 529/pair and SYP 512/bar, respectively. Moreover, m-o-m, the price of hand gel, bleach and alcohol spray decreased by nine, six and one percent, reaching SYP 1,100/50 ml, SYP 1,415/litre and SYP 2,236/200 ml, respectively.

Compared to June 2020, the price of all COVID-19 items increased except for surgeon masks which decreased by 12 percent. The price of plastic gloves and alcohol spray increased by 130 and 79 percent, respectively. Moreover, the prices of hand gel, bleach and soap bars increased by 43, 42 and 33 percent, respectively.

Additionally, compared to February 2020 (prior to the COVID-19 outbreak in Syria), the price of all items in June 2021 were found to have increased. For example the price of hand gel, alcohol spray and plastic gloves increased by 356, 435 and 689 percent, respectively. Also, the price of bleach, soap bars and surgeon masks increased by 240, 244 and 332 percent, respectively.

Table 3: Monthly price changes of key COVID-19 items, SYP

National average	Feb-20 (SYP)	Jun-21 (SYP)	% Change
Surgeon mask	79	341	332%
Gloves (pair)	67	529	689%
Alcohol spray (200 ml)	418	2,236	435%
Bleach bottle (L)	416	1,415	240%
Hand gel (50 ml)	241	1,100	356%
Soap bar	149	512	244%

Source: WFP

Chart 13: Retail Prices of Fresh Eggs, SYP

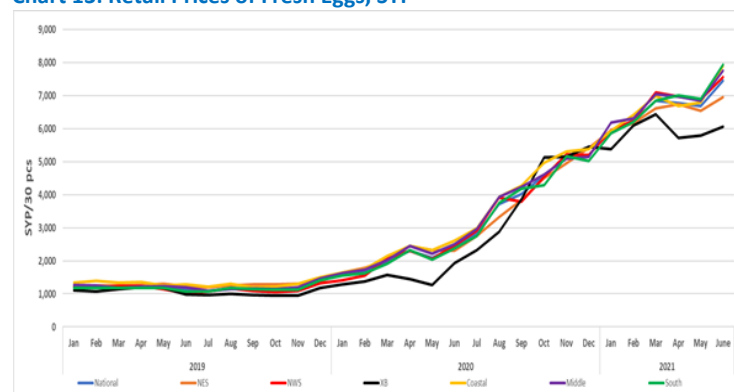
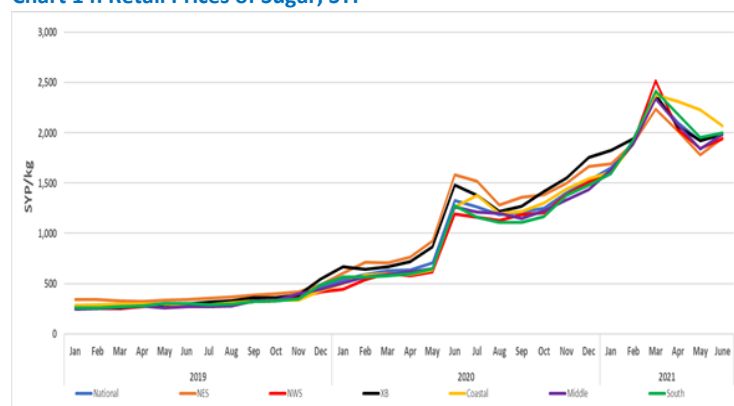


Chart 14: Retail Prices of Sugar, SYP



Source: WFP

Key food-items retail prices

Fresh eggs

M-o-m, the national average retail price of fresh eggs throughout Syria increased by 12 percent reaching SYP 7,453/30 eggs. Moreover, the price of fresh eggs increased by 43 percent since December 2020 (six months ago) and by 211 percent since June 2020.

As-Sweida recorded the highest fresh eggs price at SYP 8,320/30 eggs (up 12 percent m-o-m), while Al-Hasakeh recorded the lowest price at SYP 6,339/30 eggs (up three percent m-o-m).

Broken down by region, the southern region recorded the highest price at SYP 7,933/30 eggs (up 15 percent m-o-m), followed by the coastal region at SYP 7,902/30 eggs (up 16 percent m-o-m). While the cross-border region recorded the lowest price of fresh eggs at SYP 6,062/30 eggs (up five percent m-o-m), followed by northeast Syria at SYP 6,960/30 eggs (up six percent m-o-m).

Sugar

In June 2021, the national average retail price of sugar increased by three percent m-o-m, reaching SYP 1,985/kg. Moreover, the national average price increased by 30 percent since December 2020 (six months ago) and by 50 percent since June 2020. Ar-Raqqa recorded the highest sugar price at SYP 2,140/kg (up 18 percent m-o-m), while Al-Hasakeh recorded the lowest price of SYP 1,726/kg (up one percent m-o-m).

Broken down by region, the coastal region recorded the highest price of SYP 2,068/kg (down seven percent m-o-m), followed by the southern region at SYP 2,000/kg (up two percent m-o-m). While northwest Syria recorded the lowest price at SYP 1,940/kg (up five percent m-o-m), followed by northeast Syria at SYP 1,950/kg (up nine percent m-o-m).

Table 4. Market Price of Main Commodities in Syrian Pounds: June 2021																			
Commodity	Governorate	Current Price	Price change	Price change	Price change	Average Change	Average Change	Average Change	Commodity	Governorate	Current Price	Price change	Price change	Price change	Average Change	Average Change	Average Change		
			1M (%)	6 M (%)	12 M (%)	1M	6 M	12 M				1M (%)	6 M (%)	12 M (%)	1M	6 M	12 M		
Bread Public (1.1 kg)	Aleppo*	131	-0.2	10	205	↓	↗	↑	Dates (kg)	Aleppo	4,219	3	1	44	↗	↗	↑		
	Damascus	100	-	-	113	↔	↔	↑		Damascus	4,904	-5	19	72	↓	↗	↑		
	Dar'a	130	-0.4	4	143	↓	↗	↑		Dar'a	4,744	-3	18	45	↓	↗	↑		
	Deir-ez-Zor	143	0.3	39	80	↗	↑	↑		Deir-ez-Zor	3,226	-	-5	27	↔	↓	↑		
	Hama	135	-	35	219	↔	↑	↑		Hama	4,500	-	2	66	↔	↗	↑		
	Al-Hasakeh	100	-	-	136	↔	↔	↑		Al-Hasakeh	4,156	3	16	75	↗	↗	↑		
	Homs	125	-	25	195	↔	↑	↑		Homs	4,441	-7	1	66	↓	↗	↑		
	Idleb*	NA	-	-	-	↔	↔	↔		Idleb	4,030	0.0004	42	64	↗	↑	↑		
	Lattakia	119	-21	15	87	↓	↗	↑		Lattakia	6,873	2	15	53	↗	↗	↑		
	Quneitra	150	3	21	255	↗	↗	↑		Quneitra	3,830	1	-6	19	↗	↓	↗		
	Ar-Raqqa	172	-	72	136	↔	↑	↑		Ar-Raqqa	4,001	-3	1	41	↓	↗	↑		
	Rural Damascus	104	3	4	100	↗	↗	↑		Rural Damascus	4,748	-0.1	13	65	↓	↗	↑		
	As-Sweida	100	-	-	136	↔	↔	↑		As-Sweida	5,250	-12	18	90	↓	↗	↑		
	Tartous	144	-1	38	120	↓	↑	↑		Tartous	5,976	-12	21	53	↓	↗	↑		
	Bread Shop (1.1 kg)	Aleppo	1,661	-0.3	31	99	↓	↑		↑	Diesel (parallel market, L)	Aleppo	2,087	-3	53	149	↓	↑	↑
Damascus		2,031	1	69	310	↗	↑	↑	Damascus	2,107		-7	123	537	↓	↑	↑		
Dar'a		1,926	-1	46	218	↓	↑	↑	Dar'a	1,814		-8	62	335	↓	↑	↑		
Deir-ez-Zor		1,232	-	208	311	↔	↔	↔	Deir-ez-Zor	1,034		-6	31	240	↓	↑	↑		
Hama		2,020	44	84	267	↑	↑	↑	Hama	1,509		-11	68	277	↓	↑	↑		
Al-Hasakeh		1,021	1	11	39	↗	↗	↑	Al-Hasakeh	254		8	70	70	↗	↑	↑		
Homs		1,761	26	60	220	↑	↑	↑	Homs	1,443		-24	60	261	↓	↑	↑		
Idleb		1,563	13	33	61	↗	↑	↑	Idleb	2,241		1	29	74	↗	↑	↑		
Lattakia		1,322	-19	NA	NA	↓	↔	↔	Lattakia	1,571		-7	57	333	↓	↑	↑		
Quneitra		1,958	-5	9	9	↓	↔	↗	Quneitra	1,530		-19	46	317	↓	↑	↑		
Ar-Raqqa		1,595	-0.01	61	262	↓	↔	↔	Ar-Raqqa	875		-	145	262	↔	↑	↑		
Rural Damascus		2,032	-0.02	56	311	↓	↑	↑	Rural Damascus	2,090		-8	117	502	↓	↑	↑		
As-Sweida		2,069	-5	45	98	↓	↑	↑	As-Sweida	1,817		-23	69	323	↓	↑	↑		
Tartous		1,364	-20	NA	NA	↓	↔	↔	Tartous	1,563		-11	56	317	↓	↑	↑		
Bulgur (kg)		Aleppo	1,814	1	29	77	↗	↑	↑	US Dollar exchange rate (parallel market, \$1)		Aleppo	3,137	-1	-11	-21	↓	↓	↓
	Damascus	2,024	-5	37	73	↓	↑	↑	Damascus		3,207	-2	-13	-21	↓	↓	↓		
	Dar'a	2,142	3	53	84	↗	↑	↑	Dar'a		3,154	-2	-12	-21	↓	↓	↓		
	Deir-ez-Zor	1,768	9	31	68	↗	↑	↑	Deir-ez-Zor		3,188	-2	-11	-13	↓	↓	↓		
	Hama	2,169	10	42	88	↗	↑	↑	Hama		3,170	-2	-12	-20	↓	↓	↓		
	Al-Hasakeh	1,758	-2	8	26	↓	↗	↑	Al-Hasakeh		3,096	-0.1	-9	-24	↓	↓	↓		
	Homs	2,251	-1	49	95	↓	↑	↑	Homs		3,170	-2	-12	-20	↓	↓	↓		
	Idleb	1,478	-2	37	61	↓	↑	↑	Idleb		3,175	-2.4	-13	-19	↓	↓	↓		
	Lattakia	2,177	-7	40	107	↓	↑	↑	Lattakia		3,146	-1	-11	-21	↓	↓	↓		
	Quneitra	1,923	-0	39	91	↓	↑	↑	Quneitra		3,139	-1	-12	-21	↓	↓	↓		
	Ar-Raqqa	1,900	1	40	55	↗	↑	↑	Ar-Raqqa		3,103	0.3	-10	-23	↗	↓	↓		
	Rural Damascus	2,013	-5	34	62	↓	↑	↑	Rural Damascus		3,190	-1.6	-13	-21	↓	↓	↓		
	As-Sweida	2,390	-4	68	104	↓	↑	↑	As-Sweida		3,169	-2	-13	-21	↓	↓	↓		
	Tartous	2,140	3	42	84	↗	↑	↑	Tartous		3,146	-1	-11	-21	↓	↓	↓		
	Butane Cylinder (parallel market, 25 kg)	Aleppo	36,878	4	51	163	↗	↑	↑		Eggs (carton)	Aleppo	6,953	10	35	213	↗	↑	↑
Damascus		23,889	-3	55	59	↓	↑	↑	Damascus	7,862		13	61	187	↗	↑	↑		
Dar'a		38,390	20	8	103	↗	↗	↑	Dar'a	7,939		15	60	226	↗	↑	↑		
Deir-ez-Zor		20,153	-10	40	100	↓	↑	↑	Deir-ez-Zor	7,562		8	46	192	↗	↑	↑		
Hama		28,467	16	266	138	↗	↑	↑	Hama	7,745		13	46	225	↗	↑	↑		
Al-Hasakeh		11,588	7	17	78	↗	↗	↑	Al-Hasakeh	6,339		3	14	165	↗	↗	↑		
Homs		26,429	-2	240	119	↓	↑	↑	Homs	7,757		16	46	224	↗	↑	↑		
Idleb		33,373	5	28	87	↗	↑	↑	Idleb	6,372		4	11	226	↗	↗	↑		
Lattakia		25,125	-14	5	126	↓	↗	↑	Lattakia	8,211		20	49	220	↗	↑	↑		
Quneitra		28,700	1	35	38	↗	↑	↑	Quneitra	7,533		17	49	243	↗	↑	↑		
Ar-Raqqa		31,600	-9	128	310	↓	↑	↑	Ar-Raqqa	6,613		6	21	222	↗	↗	↑		
Rural Damascus		22,896	-0.4	48	72	↓	↑	↑	Rural Damascus	7,691		12	56	190	↗	↑	↑		
As-Sweida		24,367	2	30	42	↗	↑	↑	As-Sweida	8,320		12	58	228	↗	↑	↑		
Tartous		26,714	-9	-5	78	↓	↓	↑	Tartous	7,765		15	47	192	↗	↑	↑		
Cheese (kg)		Aleppo	7,067	7	35	148	↗	↑	↑	Eggplant (kg)		Aleppo	854	-8	-25	75	↓	↓	↑
	Damascus	6,202	-0.3	30	172	↓	↑	↑	Damascus		749	10	48	31	↗	↑	↑		
	Dar'a	6,053	8	28	178	↗	↑	↑	Dar'a		783	-3	7	146	↓	↗	↑		
	Deir-ez-Zor	6,250	1	25	153	↗	↑	↑	Deir-ez-Zor		660	-11	-29	108	↓	↓	↑		
	Hama	6,533	5	29	165	↗	↑	↑	Hama		693	46	-24	92	↑	↓	↑		
	Al-Hasakeh	5,542	4	25	171	↗	↗	↑	Al-Hasakeh		1,660	-23	105	199	↓	↑	↑		
	Homs	5,675	1	12	126	↗	↗	↑	Homs		720	19	-20	101	↗	↓	↑		
	Idleb	6,228	-6	12	183	↓	↗	↑	Idleb		1,065	-23	-27	28	↓	↓	↑		
	Lattakia	6,914	10	0	100	↗	↑	↑	Lattakia		1,106	26	4	121	↑	↗	↑		
	Quneitra	5,773	4	25	92	↗	↑	↑	Quneitra		755	-5	24	123	↓	↗	↑		
	Ar-Raqqa	5,766	-2	5	104	↓	↗	↑	Ar-Raqqa		1,213	5	56	83	↗	↑	↑		
	Rural Damascus	5,999	0.04	27	173	↗	↑	↑	Rural Damascus		752	14	39	42	↗	↑	↑		
	As-Sweida	7,022	-6	44	147	↓	↑	↑	As-Sweida		709	-17	31	124	↓	↑	↑		
	Tartous	6,231	-2	23	72	↓	↑	↑	Tartous		928	-5	1	132	↓	↗	↑		
	Chickpeas (kg)	Aleppo	2,060	4	25	143	↗	↗	↑		Fish (tuna, canned) - 160 gm	Aleppo	1,952	-3	29	87	↓	↑	↑
Damascus		2,707	-12	71	129	↓	↑	↑	Damascus	2,478		-5	27	57	↓	↑	↑		
Dar'a		2,360	0.1	67	173	↗	↑	↑	Dar'a	2,511		-5	38	61	↓	↑	↑		
Deir-ez-Zor		1,533	23	18	30	↗	↗	↑	Deir-ez-Zor	2,246		-1	36	63	↓	↑	↑		
Hama		3,081	2	58	46	↗	↑	↑	Hama	2,460		-1	-2	35	↓	↓	↑		
Al-Hasakeh		1,821	7	2	10	↗	↗	↗	Al-Hasakeh	2,223		4	10	14	↗	↗	↗		
Homs		3,019	2	55	42	↗	↑	↑	Homs	2,395		-2	-5	32	↓	↓	↑		
Idleb		2,055	12	24	194	↗	↗	↑	Idleb	1,981		-4	16	102	↓	↗	↑		
Lattakia		3,232	6	101	146	↗	↑	↑	Lattakia	2,933		6	50	62	↗	↑	↑		
Quneitra		2,554	13	96	159	↗	↑	↑	Quneitra	2,233		-3	31	45	↓	↑	↑		
Ar-Raqqa		3,593	-0.2	125	152	↓	↑	↑	Ar-Raqqa	2,419		-2	30	67	↓	↑	↑		
Rural Damascus		2,521	-12	50	120	↓	↑	↑	Rural Damascus	2,449		-2	27	46	↓	↑	↑		
As-Sweida		2,640	-12	51	114	↓	↑	↑	As-Sweida	2,508		1	42	86	↗	↑	↑		
Tartous		3,065	-1	56	142	↓	↑	↑	Tartous	2,504		-10	16	71	↓	↗	↑		
Key:		↑	Price increase equal to or greater than 25 percent									* Key for unskilled labor wage and exchange rate:	↑	Increase equal to or greater than 25 percent					
	↗	Price increase between 0.1 and 25 percent								↗	Increase between 0.1 and 25 percent								
	↔	No price change									↔	No change							
	↓	Price decrease below normal price fluctuation									↓	Decrease below normal fluctuation							
* Bread (bakery) in Aleppo and Idleb represents subsidized bread in Government of Syria areas																			

Commodity	Governorate	Current Price	Price change	Price change	Price change	Average Change	Average Change	Average Change	Commodity	Governorate	Current Price	Price change	Price change	Price change	Average Change	Average Change	Average Change
			1M (%)	6 M (%)	12 M (%)	1M	6 M	12 M				1M (%)	6 M (%)	12 M (%)	1M	6 M	12 M
Iodised salt (kg)	Aleppo	736	1	31	53	↗	↑	↑	Sheep 2Y old Male (head)	Aleppo	481,733	-2.1	43	40	↓	↑	↑
	Damascus	410	2	22	208	↗	↗	↑		Damascus	471,911	-15	36	6	↓	↑	↗
	Dar'a	588	4	74	112	↗	↑	↑		Dar'a	457,863	-3	33	43	↓	↑	↑
	Deir-ez-Zor	465	-7	71	76	↓	↑	↑		Deir-ez-Zor	463,533	-5	15	58	↓	↗	↑
	Hama	720	0	-4	41	↔	↓	↑		Hama	476,000	-4	23	41	↓	↗	↑
	Al-Hasakeh	484	0.1	21	68	↗	↗	↑		Al-Hasakeh	429,298	-1	-5	49	↓	↓	↑
	Homs	912	-1	21	78	↓	↗	↑		Homs	594,905	0.1	53	75	↗	↑	↑
	Idleb	433	2	-3	104	↓	↓	↑		Idleb	530,233	5	37	21	↗	↑	↗
	Lattakia	959	15	111	752	↗	↑	↑		Lattakia	375,208	-33	-2	1	↓	↓	↗
	Quneitra	392	-11	17	43	↓	↗	↑		Quneitra	456,625	-3	28	38	↓	↑	↑
	Ar-Raqqa	797	10	108	194	↗	↑	↑		Ar-Raqqa	480,000	0	6	67	↔	↗	↑
	Rural Damascus	418	-5	-2	273	↓	↓	↑		Rural Damascus	476,657	-9	36	9	↓	↑	↗
	As-Sweida	868	3	142	190	↗	↑	↑		As-Sweida	506,600	1	20	105	↗	↗	↑
	Tartous	1,006	18	124	600	↗	↑	↑		Tartous	538,524	1	44	108	↗	↑	↑
	Red split lentils (kg)	Aleppo	2,723	-0.3	23	119	↓	↗		↑	Sugar (kg)	Aleppo	1,894	4	21	42	↗
Damascus		3,022	2	82	140	↗	↑	↑	Damascus	1,943		9	34	52	↗	↑	↑
Dar'a		2,647	-1	101	106	↓	↑	↑	Dar'a	1,995		5	35	61	↗	↑	↑
Deir-ez-Zor		2,332	-4	50	104	↓	↑	↑	Deir-ez-Zor	1,936		7	22	27	↗	↗	↑
Hama		2,792	4	46	135	↗	↑	↑	Hama	2,068		9	46	71	↗	↑	↑
Al-Hasakeh		1,863	6	10	19	↗	↗	↗	Al-Hasakeh	1,726		1	2	2	↗	↗	↗
Homs		2,736	-9	43	124	↓	↑	↑	Homs	1,978		6	39	63	↗	↑	↑
Idleb		2,338	4	16	54	↗	↗	↑	Idleb	2,092		4	14	44	↗	↗	↑
Lattakia		2,889	-10	48	131	↓	↑	↑	Lattakia	2,058		-7	33	49	↓	↑	↑
Quneitra		2,813	1	120	171	↗	↑	↑	Quneitra	1,943		7	34	42	↗	↑	↑
Ar-Raqqa		4,000	0	106	181	↔	↑	↑	Ar-Raqqa	2,140		18	27	38	↗	↑	↑
Rural Damascus		2,943	-0.2	73	146	↓	↑	↑	Rural Damascus	1,951		9	33	44	↗	↑	↑
As-Sweida		2,883	-3	70	142	↓	↑	↑	As-Sweida	2,065		-6	35	70	↓	↑	↑
Tartous		2,822	-21	43	94	↓	↑	↑	Tartous	2,072		-8	35	81	↓	↑	↑
Meat (beef, kg)		Aleppo	17,638	-2	21	58	↓	↗	↑	Tomato (kg)		Aleppo	814	-15	-35	78	↓
	Damascus	21,544	0.3	54	72	↗	↑	↑	Damascus		834	46	-34	133	↑	↓	↑
	Dar'a	19,248	1	56	80	↗	↑	↑	Dar'a		758	10	-34	161	↗	↓	↑
	Deir-ez-Zor	16,241	-3	27	72	↓	↑	↑	Deir-ez-Zor		702	4	-35	120	↗	↓	↑
	Hama	19,720	1	35	115	↗	↑	↑	Hama		722	26	-50	98	↑	↓	↑
	Al-Hasakeh	17,921	1	19	63	↗	↗	↑	Al-Hasakeh		1,098	-42	-25	134	↓	↓	↑
	Homs	18,989	-14	30	106	↓	↑	↑	Homs		792	38	-45	104	↑	↓	↑
	Idleb	18,342	0.2	25	66	↗	↑	↑	Idleb		1,356	-23	-12	92	↓	↓	↑
	Lattakia	23,333	-6	63	112	↓	↑	↑	Lattakia		859	-20	-21	115	↓	↓	↑
	Quneitra	19,400	-3	39	52	↓	↑	↑	Quneitra		751	15	10	116	↗	↗	↑
	Ar-Raqqa	15,600	1	58	109	↗	↑	↑	Ar-Raqqa		807	-37	-36	45	↓	↓	↑
	Rural Damascus	20,724	-0.1	48	95	↓	↑	↑	Rural Damascus		921	41	-27	101	↑	↓	↑
	As-Sweida	19,775	-1	57	67	↓	↑	↑	As-Sweida		797	-0.4	-5	87	↓	↓	↑
	Tartous	24,274	-2	72	100	↓	↑	↑	Tartous		943	-9	-8	169	↓	↓	↑
	White beans (kg)	Aleppo	4,882	4	14	148	↗	↗	↑		Unskilled Labor wage*	Aleppo	6,567	0.1	55	48	↗
Damascus		6,236	-3	16	146	↓	↗	↑	Damascus	9,556		10	37	71	↗	↑	↑
Dar'a		6,682	-1	20	184	↓	↗	↑	Dar'a	5,860		1	26	80	↗	↑	↑
Deir-ez-Zor		5,606	-5	0	133	↓	↓	↑	Deir-ez-Zor	4,290		10	46	14	↗	↑	↗
Hama		5,683	-6	0	101	↓	↓	↑	Hama	6,733		10	47	169	↗	↑	↑
Al-Hasakeh		3,982	-1	11	81	↓	↗	↑	Al-Hasakeh	5,140		-1	3	25	↓	↗	↑
Homs		6,059	-2	5	111	↓	↗	↑	Homs	6,286		3	41	151	↗	↑	↑
Idleb		4,567	8	35	209	↗	↑	↑	Idleb	7,074		-1	14	43	↓	↗	↑
Lattakia		6,520	-11	22	149	↓	↗	↑	Lattakia	7,375		-10	3	69	↓	↗	↑
Quneitra		5,497	-1	205	181	↓	↑	↑	Quneitra	6,933		-0.3	54	118	↓	↑	↑
Ar-Raqqa		4,417	-0.1	14	78	↓	↗	↑	Ar-Raqqa	7,073		9	46	71	↗	↑	↑
Rural Damascus		6,163	-2	15	168	↓	↗	↑	Rural Damascus	8,805		6	28	100	↗	↑	↑
As-Sweida		6,680	-10	NA	247	↓	↔	↑	As-Sweida	5,983		12	94	139	↗	↑	↑
Tartous		6,548	-0.5	20	176	↓	↗	↑	Tartous	9,805		14	32	131	↗	↑	↑
Vegetable oil (L)		Aleppo	6,508	-0.4	55	138	↓	↑	↑	Wheat Flour (kg)		Aleppo	1,832	7	51	122	↗
	Damascus	7,469	-2	67	147	↓	↑	↑	Damascus		1,852	-5	39	94	↓	↑	↑
	Dar'a	7,525	2	66	149	↗	↑	↑	Dar'a		1,886	-4	49	84	↓	↑	↑
	Deir-ez-Zor	6,915	1	63	131	↗	↑	↑	Deir-ez-Zor		1,800	5	34	100	↗	↑	↑
	Hama	7,427	2	59	147	↗	↑	↑	Hama		1,964	-2	52	110	↓	↑	↑
	Al-Hasakeh	5,275	2	44	106	↗	↑	↑	Al-Hasakeh		1,742	7	32	43	↗	↑	↑
	Homs	7,257	-3	55	141	↓	↑	↑	Homs		1,869	-13	44	97	↓	↑	↑
	Idleb	6,020	2	70	188	↗	↑	↑	Idleb		1,488	2	41	84	↗	↑	↑
	Lattakia	7,653	-7	63	177	↓	↑	↑	Lattakia		2,034	-13	68	131	↓	↑	↑
	Quneitra	7,503	2	70	111	↗	↑	↑	Quneitra		1,766	-2	51	74	↓	↑	↑
	Ar-Raqqa	6,303	-1	84	161	↓	↑	↑	Ar-Raqqa		2,000	0	97	120	↔	↑	↑
	Rural Damascus	7,527	0.2	66	140	↗	↑	↑	Rural Damascus		1,892	-2	40	110	↓	↑	↑
	As-Sweida	7,483	-1	64	187	↓	↑	↑	As-Sweida		2,198	-3	40	104	↓	↑	↑
	Tartous	7,686	-5	64	169	↓	↑	↑	Tartous		1,936	-16	61	131	↓	↑	↑
	Parsley (packet)	Aleppo	194	-8	25	50	↓	↑	↑		Pasta (spaghetti)	Aleppo	3,732	6	85	153	↗
Damascus		198	-0.4	70	119	↓	↑	↑	Damascus	3,167		7	95	143	↗	↑	↑
Dar'a		216	6	11	116	↗	↗	↑	Dar'a	3,062		6	86	170	↗	↑	↑
Deir-ez-Zor		165	12	17	120	↗	↗	↑	Deir-ez-Zor	2,621		5	128	68	↗	↑	↑
Hama		217	-8	19	83	↓	↗	↑	Hama	3,239		-38	93	95	↓	↑	↑
Al-Hasakeh		207	-1	4	107	↓	↗	↑	Al-Hasakeh	1,197		13	-28	-23	↗	↓	↓
Homs		520	12	180	347	↗	↑	↑	Homs	4,207		-19	149	159	↓	↑	↑
Idleb		228	18	31	-1	↗	↑	↓	Idleb	2,130		2	56	52	↗	↑	↑
Lattakia		209	-8	48	76	↓	↑	↑	Lattakia	3,721		-9	43	110	↓	↑	↑
Quneitra		247	23	64	191	↗	↑	↑	Quneitra	3,057		6	114	184	↗	↑	↑
Ar-Raqqa		212	-1	36	121	↓	↑	↑	Ar-Raqqa	1,707		0.4	-9.4	-7	↗	↓	↓
Rural Damascus		201	1	72	117	↗	↑	↑	Rural Damascus	2,998		2	79	146	↗	↑	↑
As-Sweida		223	11	65	123	↗	↑	↑	As-Sweida	2,972		-0.4	64	118	↓	↑	↑
Tartous		181	-34	0	45	↓	↓	↑	Tartous	3,822		-4	35	186	↓	↑	↑
Rice (kg)		Aleppo	2,659	-1	39	106	↓	↑	↑	Yogurt (kg)		Aleppo	1,578	3	-9	104	↗
	Damascus	2,676	-1	54	66	↓	↑	↑	Damascus		1,486	5	74	166	↗	↑	↑
	Dar'a	2,697	1	35	72	↗	↑	↑	Dar'a		1,401	7	38	170	↗	↑	↑
	Deir-ez-Zor	2,398	-1	52	80	↓	↑	↑	Deir-ez-Zor		945	3	29	120	↗	↑	↑
	Hama	2,447	11	60	111	↗	↑	↑	Hama		1,529	9	50	234	↗	↑	↑
	Al-Hasakeh	2,023	1	13	22	↗	↗	↑	Al-Hasakeh		1,442	6	45	151	↗	↑	↑
	Homs	2,470	4	60	111	↗	↑	↑	Homs		1,180	8	16	156	↗	↗	↑
	Idleb	2,146	-5	38	55	↓	↑	↑	Idleb		1,599	1	17	161	↗	↗	↑
	Lattakia	2,770	1	38	131	↗	↑	↑	Lattakia		1,377	14	18	98	↗	↗	↑
	Quneitra	2,917	0.4	46	64	↗	↑	↑	Quneitra		1,352	21	78	216	↗	↑	↑
	Ar-Raqqa	2,112	-0.4	10	29	↓	↗	↑	Ar-Raqqa		1,157	0.2	-6	92	↗	↓	↑
	Rural Damascus	2,508	-0.3	45	52	↓	↑	↑	Rural Damascus		1,411	4	61	193	↗	↑	↑
	As-Sweida	2,451	-9	48	74	↓	↑	↑	As-Sweida		1,346	-2	35	144	↓	↑	↑
	Tartous	2,434	-15	19	97	↓	↗	↑	Tartous		1,436	-2	29	107	↓	↑	↑