



@WFP/Hussam AlSaleh

Highlights

- o The national average price of WFP’s standard reference food basket increased by one percent between June and July 2021, reaching SYP 167,439 (USD 67 at the official exchange rate of SYP 2,500/USD).
- o On 10 July 2021, the Ministry of Internal Trade and Consumer Protection increased the price of subsidized bread by 100 percent to SYP 200/bundle. The price of subsidized diesel also increased to SYP 500/litre (up by 178 percent for heating and transport diesel and up by 270 percent for diesel for bakeries).
- o On 11 July, two official Decrees were issued raising the salaries and wages of civil servants, military workers and private professionals by 50 percent as well as raising pensions by 40 percent.
- o In July 2021, the Syrian pound lost two percent of its value, reaching a monthly average of SYP 3,210/USD. Moreover, compared to a year ago, the Syrian pound significantly depreciated by 30 percent.

o For further information, please contact:

Jan Michiels at
Jan.Michiels@wfp.org

Pakinam Moussa at
Pakinam.Moussa@wfp.org

Abdelrahman Hamza at
Abdelrahman.Hamza@wfp.org

Standard Food Basket

In July 2021, the national average price of a standard reference food basket¹ increased by one percent compared to June 2021, reaching SYP 167,439. The national average food basket price was 38 percent higher than that of January 2021 (six months ago) and was 93 percent higher compared to July 2020 (Figure 1). This is the first month-on-month (m-o-m) increase in the national average food basket price since April 2021. The relative stability in the food basket price is linked to stricter controls of market prices and exchange rates by the government.

M-o-m, nine governorates recorded an increasing average reference food basket price in July 2021. The highest m-o-m increase of eight percent was reported in Homs reaching SYP 176,485. The lowest m-o-m increase, of one percent, was reported in Aleppo, Lattakia and As-Sweida. While three governorates also recorded a decreasing average m-o-m reference food basket price trend, with the highest m-o-m decrease of five percent recorded in Deir-ez-Zor, where the price of the food basket reached SYP 144,865. The reference food basket price in Ar-Raqqa and Rural Damascus remained unchanged m-o-m.

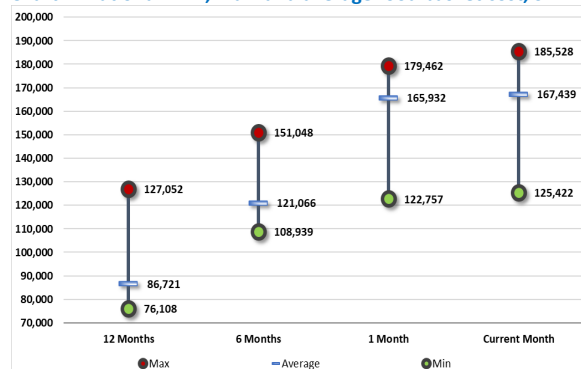
Year-on-year (y-o-y), the price of the reference food basket has significantly increased across all 14 governorates. Homs recorded the highest increase (up 121 percent), while Idleb recorded the lowest increase (up 46 percent).

The gap between the highest and lowest average food basket prices increased by six percent from SYP 56,705 in June 2021 to SYP 60,107 in July 2021 and by 18 percent since July 2020 (Chart 1).

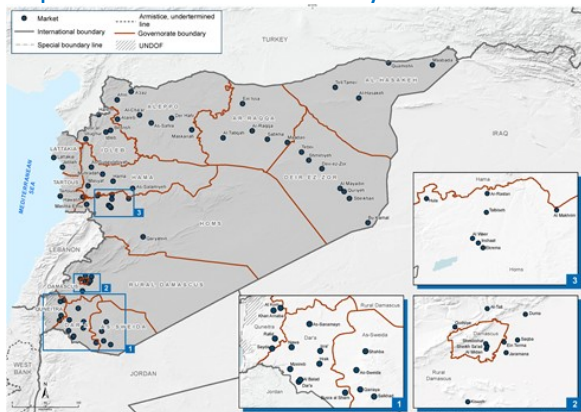
Figure 1: Food basket cost and changes, SYP

Governorate	Price July 2021	1 month change	6 months changes	12 months changes
Aleppo	SYP 163,163	1%	31%	113%
Damascus	SYP 167,759	-3%	47%	104%
Dar'a	SYP 172,088	2%	53%	104%
Deir-ez-Zor	SYP 144,865	-5%	33%	90%
Hama	SYP 169,521	2%	41%	112%
Al-Hasakeh	SYP 125,422	2%	11%	49%
Homs	SYP 176,485	8%	46%	121%
Idleb	SYP 185,528	3%	23%	46%
Lattakia	SYP 177,243	1%	39%	42%
Ar-Raqqa	SYP 177,320	0%	44%	109%
Rural Damascus	SYP 169,522	0%	44%	56%
As-Sweida	SYP 169,809	1%	44%	103%
Tartous	SYP 165,564	-2%	32%	91%
Quneitra	SYP 179,858	2%	53%	115%
Average	SYP 167,439	1%	38%	93%

Chart 1: National min., max. and average food basket cost, SYP



Map 1: Location of markets monitored by WFP



1. The standard food basket is a group of essential food commodities. In Syria, the food basket is set at a group of dry goods providing 2,060 kcal a day for a family of five during a month. The basket includes 37 kg bread, 19 kg rice, 19 kg lentils, 5 kg of sugar, and 7 litres of vegetable oil.

Bread and Fuel Subsidy

Bread*

On 10 July, the Ministry of Internal Trade and Consumer Protection increased the price of subsidized bread by 100 percent from SYP 100/bundle to SYP 200/bundle. The decision also introduced the need to sell all subsidised bread bundles in a nylon bag for hygiene reasons. The national average price increased by 324 percent y-o-y, reaching SYP 208/bundle.

Additionally, on 19 July, the government announced that subsidised bread allocations would decrease to one bundle per person every three days; two bundles per family of two people every three days; and one bundle per family of three people on a daily basis. As of August 2021, the new bread allocations have started in Damascus, Rural Damascus, Hama, Tartous and Lattakia. Previously, subsidised bread bundles were distributed on a daily basis based on family size; with one bundle per family of one or two people; two bundles per family of three or four people; three bundles per family of five or six people; and four bundles per family of seven people or more.

Moreover, the price of commercial bread increased by two percent m-o-m and by 73 percent y-o-y, reaching SYP 1,801/bundle. As-Sweida recorded the highest commercial bread price of SYP 2,109/bundle (up two percent m-o-m), followed by Rural Damascus at SYP 2,062/bundle (up one percent m-o-m). On the other hand, Al-Hasakeh recorded the lowest price of SYP 1,013/bundle (down one percent m-o-m), followed by Tartous at SYP 1,201 (down 12 percent m-o-m).

Increase in National Salaries

On 11 July, President al-Assad of Syria issued two legislative decrees raising the salaries and wages of civil and military workers and pensioners.

Decree No. 19 of 2021 added a 50 percent increase to salaries and wages for all civil and military workers of the state, and raised the general minimum wage and the minimum wage for workers in the private, cooperative and joint sectors not covered by the provisions of the Basic Law for state workers to become SYP 71,515 per month.

Decree No. 20 of 2021 granted military and civilian pension holders an increase of 40% in their retirement pension.

Further details of the two Decrees can be found following the two links in the footnote below².

Diesel

On 10 July, the Ministry of Internal Trade and Consumer Protection increased the price of diesel to SYP 500/litre for all public and private sectors. For heating and transport diesel, this represented an increase of 178 percent from SYP 180/litre. For bakeries, this represented an increase of 270 percent from SYP 135/litre.

In July 2021, the subsidized national average price of diesel more than doubled compared to June 2021 (up 114 percent m-o-m), reaching SYP 376/litre.

Moreover, the informal national average price of transport diesel increased by 29 percent m-o-m and by 340 percent since July 2020 reaching SYP 2,086/litre. The informal price remains four times higher than the formal price (SYP 376/litre) - Chart 3.

Damascus recorded the highest informal price at SYP 2,663/litre (up 26 percent m-o-m), while Al-Hasakeh recorded the lowest price at SYP 229/litre (down 10 percent m-o-m). Broken down by regions, northwest Syria recorded the highest price of informal transport diesel at SYP 2,664/litre (up 28 percent m-o-m), while northeast Syria recorded the lowest price at SYP 890/litre (up 16 percent m-o-m). Moreover, the informal national average price of heating diesel increased by 30 percent m-o-m, reaching SYP 2,129/litre.

Chart 2: Retail Prices of commercial bread, SYP

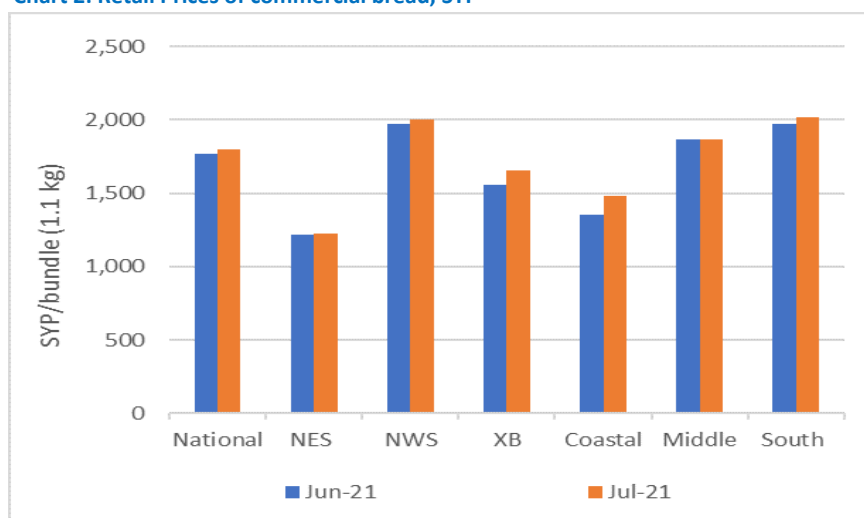
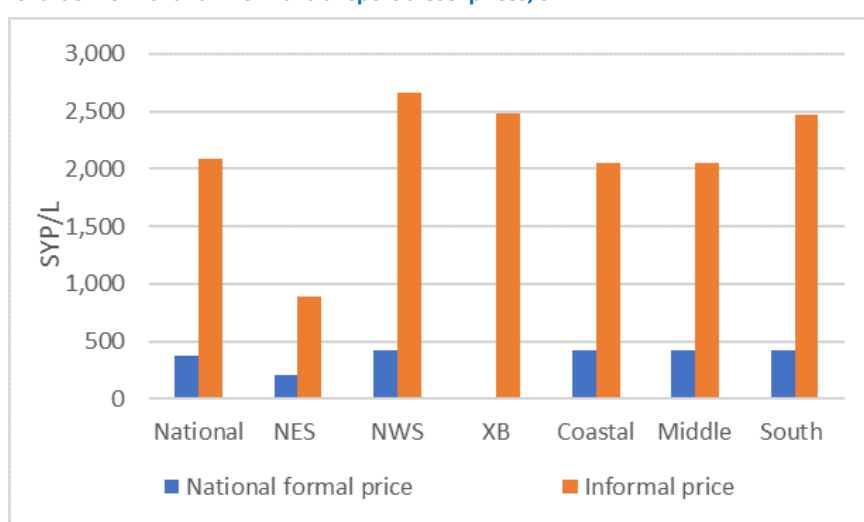


Chart 3: Formal and informal transport diesel prices, SYP**



Source: WFP

*Starting from March 2021, WFP-monitored commercial bread has been switched from resold public bread bundles to commercial bread sold at shops. Prices for the past year have been adjusted to include commercial bread resold from shops. Moreover, all prices have been adjusted to reflect bread bundle size of 1.1 kg instead of 1.3 kg since November 2020.

**No formal prices have been reported in the cross-border region because there is no subsidized diesel or butane gas in the region.

² Decree No.19 <http://www.sana.sy/?p=1429481>;

Decree No. 20 <http://www.sana.sy/?p=1429475>

Legend on regions of analysis: 'Northwest'=Aleppo; 'Cross-border'=Idleb & Aleppo [A'zaz, Atarib & Afrin]; 'Coastal'=Lattakia & Tartous; 'Northeast'=Ar-Raqqqa, Al-Hasakeh & Deir-ez-Zor; 'Middle'=Hama, Homs and Idleb [Senjar]; 'South'=Damascus, Rural Damascus, Dar'a, As-Sweida & Quneitra.

Staple cereals retail prices

Wheat Flour

M-o-m, the national average retail price of wheat flour throughout Syria remained unchanged, reaching SYP 1,870/kg, while it increased by 42 percent compared to January 2021 and 82 percent y-o-y. As-Sweida recorded the highest wheat flour price in July at SYP 2,057/kg (down six percent m-o-m), followed by Dar'a at SYP 2,001/kg (up six percent m-o-m). However, Idleb recorded the lowest price of SYP 1,556/kg (up five percent m-o-m), followed by Deir-ez-Zor at SYP 1,663/kg (down eight percent m-o-m).

Broken down by regions, Northwest Syria recorded the highest retail price at SYP 2,171/kg (down two percent m-o-m), followed by the Southern region at SYP 1,963/kg (up three percent m-o-m). The Cross-Border (XB) region recorded the lowest retail price at SYP 1,532/kg (up nine percent m-o-m), followed by the Coastal region at SYP 1,760/kg (down 10 percent m-o-m) - Chart 4.

Rice

M-o-m, the national average retail price of Egyptian white rice remained constant (down 0.2 percent m-o-m) reaching SYP 2,469/kg in July 2021. Conversely, y-o-y, the price of Egyptian white rice increased by 58 percent. Quneitra recorded the highest price at SYP 2,972/kg (up two percent m-o-m), followed by Dar'a at SYP 2,779/kg (up three percent m-o-m). However, Al-Hasakeh recorded the lowest price at SYP 2,102/kg (up four percent m-o-m), followed by Tartous at SYP 2,107 (down 13 percent m-o-m).

M-o-m, the Middle region recorded the highest price at SYP 2,631/kg (up seven percent m-o-m), followed by the Southern region at SYP 2,577/kg (down three percent m-o-m). Northeast Syria recorded the lowest average Egyptian white rice price by region at SYP 2,168/kg (down two percent m-o-m), followed by Northwest Syria at SYP 2,382/kg (up one percent m-o-m) - Chart 5.

Bulgur

M-o-m, the national average retail price of bulgur increased by one percent at SYP 2,012/kg in July 2021, whereas y-o-y, the price of bulgur increased by 61 percent. Homs recorded the highest bulgur retail price at SYP 2,330/kg (up three percent m-o-m), followed by As-Sweida at SYP 2,292/kg (down four percent m-o-m). However, Idleb recorded the lowest price at SYP 1,542/kg (up four percent m-o-m), followed by Deir-ez-Zor at SYP 1,695/kg (down four percent m-o-m).

The Middle region recorded the highest average bulgur price by region at SYP 2,269/kg (up three percent m-o-m), followed by the Southern region at SYP 2,130/kg (up two percent m-o-m). While the Cross-Border region recorded the lowest average bulgur price at SYP 1,424/kg (up two percent m-o-m), followed by Northeast Syria at SYP 1,783/kg (down two percent m-o-m) - Chart 6.

Chart 4: Retail Prices of Wheat Flour, SYP

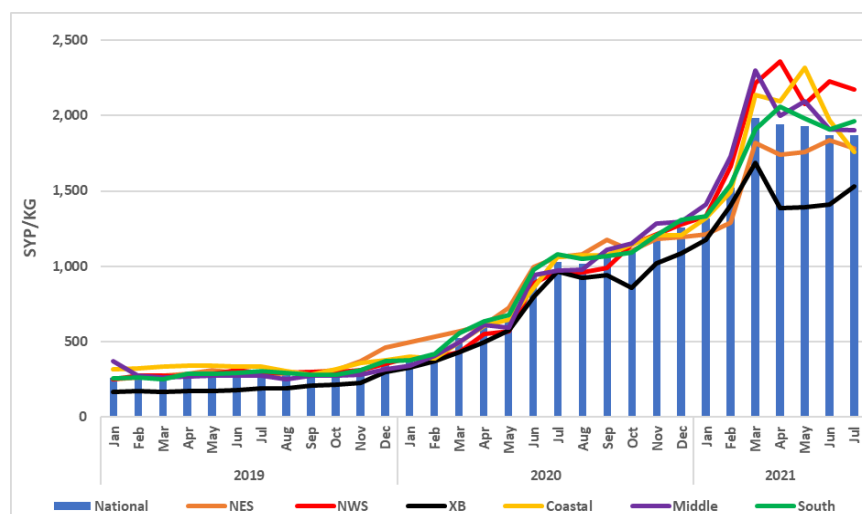


Chart 5: Retail Prices of Rice, SYP

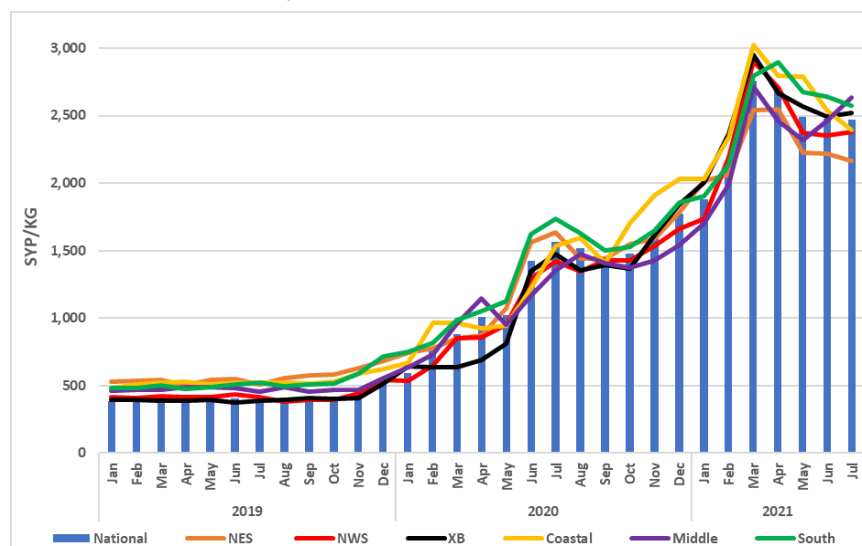
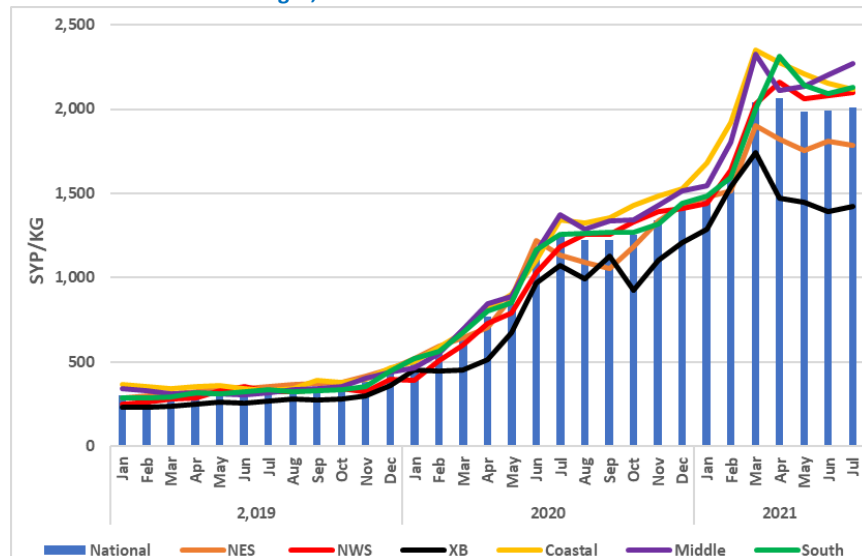


Chart 6: Retail Prices of Bulgur, SYP



Source: WFP Field Offices

Exchange rate***

In July 2021, the informal SYP/USD exchange rate depreciated m-o-m by two percent, reaching SYP 3,210/USD. Moreover, compared to a year ago, the Syrian pound significantly depreciated by 30 percent. The highest monthly average informal exchange rate was reported in Damascus at SYP 3,265/USD (depreciating by two percent m-o-m), followed by Rural Damascus at SYP 3,249/USD (depreciating by two percent m-o-m).

On the other hand, the lowest monthly average rate in July was reported in Tartous at SYP 3,175/USD (depreciating by one percent m-o-m), followed by Quneitra at SYP 3,180/USD (depreciating by one percent m-o-m). Moreover, the formal exchange rate and the UN operational rate have both remained unchanged m-o-m at SYP 2,500/USD.

Butane gas prices

The monthly average formal butane gas cylinder price (25,000 L) remained unchanged m-o-m at SYP 4,079/refill in July 2021. However, compared to July 2020, the price has increased by 49 percent.

Moreover, the informal monthly national average price of one butane gas cylinder (25,000 L) increased by 36 percent m-o-m, reaching SYP 37,964/refill in July 2021. The price also increased compared to July 2020 by 188 percent. Dar'a recorded the highest monthly average price at SYP 64,104/refill (up 67 percent m-o-m), followed by Hama at SYP 43,992/refill (up 55 percent m-o-m). Al-Hasakeh recorded the lowest monthly average price at SYP 11,750/refill (up one percent m-o-m), followed by Deir-ez-Zor at SYP 22,303 (up 11 percent m-o-m).

Broken down by region, Northwest Syria recorded the highest monthly average informal butane gas refill price at SYP 51,438/refill (up 27 percent m-o-m), followed by the Southern region at SYP 44,185/refill (up 52 percent m-o-m). Northeast Syria recorded the lowest monthly average price at SYP 20,342/refill (almost unchanged m-o-m), followed by the Coastal region at SYP 32,458/refill (up 24 percent m-o-m).

Vegetables retail prices

In July 2021, the national monthly average price of eggplants decreased by 13 percent m-o-m, reaching SYP 753/kg. However, compared to July 2020, the price increased by 110 percent. Broken down by region, the Coastal region recorded the highest price at SYP 964/kg (down two percent m-o-m), while Northeast Syria recorded the lowest price at SYP 528/kg (down 51 percent m-o-m).

Furthermore, the national monthly average price of onions decreased by 11 percent m-o-m, reaching SYP 779/kg. Whereas y-o-y, the price of onions increased by 99 percent. Broken down by region, the Coastal region recorded the highest monthly average price at SYP 907/kg (down 25 percent m-o-m), while the Middle region recorded the lowest price at SYP 467/kg (up 15 percent m-o-m).

During the reporting period, the price of tomatoes decreased by nine percent m-o-m, reaching SYP 779/kg. While y-o-y, the price of tomatoes increased by 150 percent. Broken down by region, the Coastal region recorded the highest price at SYP 1,496/kg (up 63 percent m-o-m), while Northwest Syria recorded the lowest price at SYP 528/kg (down nine percent m-o-m).

***When measuring exchange rates, there are two quotations. The first is the direct quotation where the US dollar is the base of measuring the change in exchange rate against the local currency. The second one is the indirect quotation where the local currency is the base of measuring the change in the exchange rate against the US dollar. The change in the exchange rate used below reflects the indirect quotation (measuring how much has the Syrian pound improved (appreciated) or worsened (depreciated) against the US dollar).

****No formal prices have been reported in the cross-border region because there is no subsidized diesel or butane gas in the region.

Table 1: Informal market exchange rate, 1 USD to SYP

Governorate	July 2021	% change (m-o-m)	% change (y-o-y)
Aleppo	3,198	-1%	-31%
Al-Hasakeh	3,218	-4%	-28%
Ar-Raqqa	3,220	-4%	-29%
As-Sweida	3,208	-1%	-30%
Damascus	3,265	-2%	-31%
Dar'a	3,185	-1%	-30%
Deir-ez-Zor	3,213	-1%	-27%
Hama	3,225	-2%	-31%
Homs	3,225	-2%	-31%
Idlib	3,223	-1%	-28%
Lattakia	3,183	-1%	-30%
Quneitra	3,180	-1%	-30%
Rural Damascus	3,249	-2%	-30%
Tartous	3,175	-1%	-30%
National average	3,210	-2%	-30%
Official rate	2,500	0%	-50%

Chart 7: Formal and informal butane gas cylinder prices, SYP****

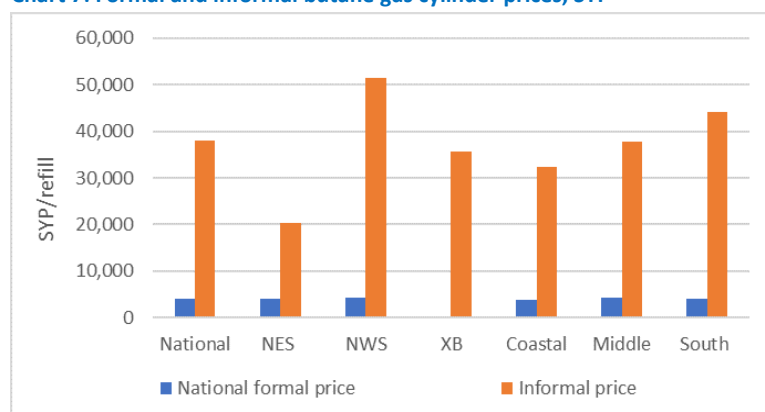
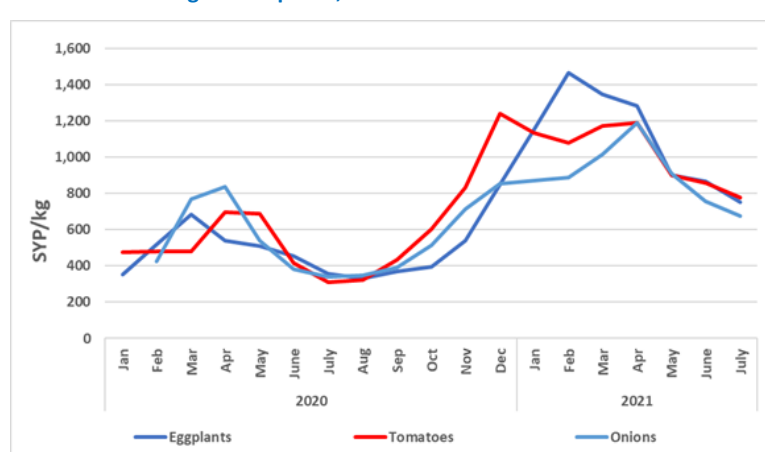


Chart 8: Retail vegetables prices, SYP



Source: WFP field offices

Terms of Trade (ToT)²

ToT between wage labour and wheat flour

The national average non-skilled labour wage, representing construction, off-loading and agricultural labour, was recorded at SYP 7,043/day (up five percent m-o-m) in July 2021. Moreover, the wage rate was 75 percent above its y-o-y level and 34 percent above levels recorded in January 2021 - Chart 9.

Damascus recorded the highest non-skilled daily wage rate at SYP 10,208/day (up seven percent m-o-m), while Deir-ez-Zor recorded the lowest rate at SYP 4,847/day (up 13 percent m-o-m). Broken down by region, the Southern region recorded the highest wage rate of SYP 7,825/day (up seven percent m-o-m), while Northwest Syria recorded the lowest wage rate of SYP 5,938/day (down four percent m-o-m).

The national average ToT between wheat flour and wage labour, a proxy indicator for purchasing power, increased by five percent between June and July 2021, reaching 3.8 kgs of wheat flour/non-skilled daily wage compared to 3.6 kgs of wheat flour in June 2021. However, compared to January 2021 (six months ago), the national average ToT decreased by five percent and by four percent compared to July 2020. In other words, the national average daily wage of a non-skilled labourer could buy 3.8 kgs of wheat flour in July 2021 compared to four kgs in January 2021, and 3.9 kgs in July 2020.

There is however a lot of difference in wheat flour and wage labour ToT rates across Syria. Broken down by region, the Cross-Border region recorded the highest ToT at 4.9 kgs (down five percent m-o-m), while Northwest Syria recorded the lowest ToT at 2.7 kgs (down one percent m-o-m) - Chart 10.

ToT between sheep and wheat flour

The national average price of a two-year old alive male sheep increased by five percent m-o-m and by 39 percent since July 2020, reaching SYP 514,069/sheep in July 2021 (Chart 11).

Homs recorded the highest average price of a two-year old alive male sheep at SYP 608,119/head (up two percent m-o-m), while Lattakia recorded the lowest price at SYP 381,933/head (up two percent m-o-m).

Broken down by region, the Middle region recorded the highest average price across Syria at SYP 573,410/sheep (up five percent m-o-m), followed by the Cross-border region at SYP 560,644/sheep (up seven percent m-o-m). While the Coastal region recorded the lowest price at SYP 391,481/sheep (down 18 percent m-o-m), followed by Northeast Syria at SYP 456,571/sheep (down one percent m-o-m).

In July 2021, the ToT between an alive two-year old male sheep and wheat flour was 275 kgs of wheat per sheep (up five percent m-o-m). However, the ToT worsened by 24 percent since July 2020.

Broken down by region, the Cross-Border region recorded the highest sheep and wheat flour ToT at 366 kgs of wheat per sheep (down one percent m-o-m), followed by the Middle region at 302 kgs of wheat per sheep (up six percent m-o-m). The Coastal region recorded the lowest ToT at 222 kgs of wheat per sheep (down 9 percent m-o-m), followed by the Northwest Syria region at 254 kgs per sheep (up 24 percent m-o-m) - Chart 12.

Chart 9: Daily wage for unskilled labour, SYP

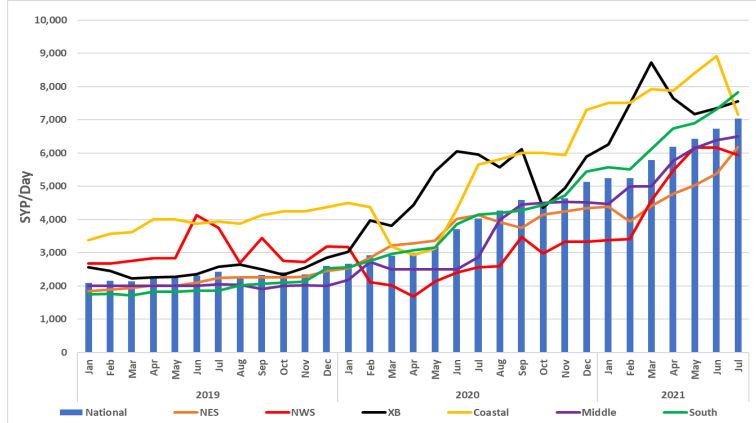


Chart 10: Terms of Trade (ToT) between wheat flour and wage rate

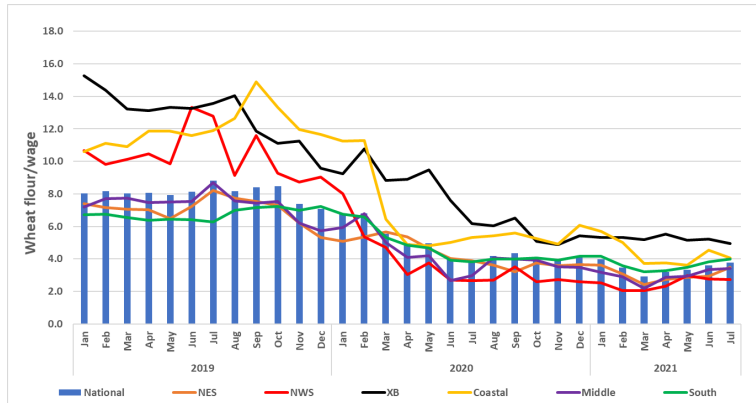


Chart 11: Price of livestock, SYP/one 2Y old sheep

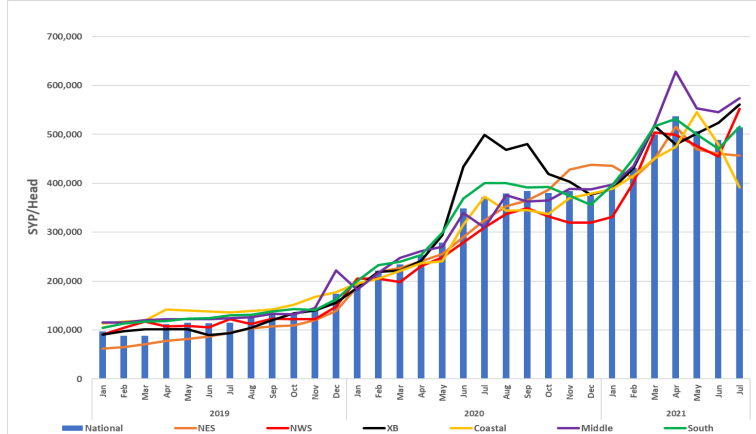
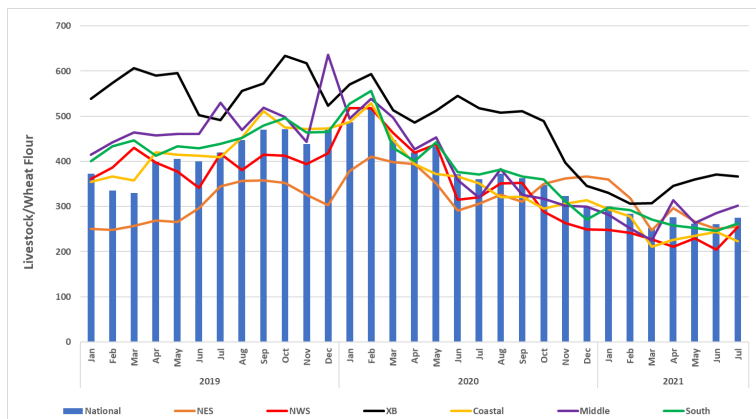


Chart 12: Terms of Trade (ToT) between wheat flour and the price of a 2 year old sheep



Source: WFP

2. The ToT are proxy indicators for household purchasing power who rely on livestock and/or casual labour as their main source of income for the purchase of cereals from local markets. ToTs are important components of food security analysis. Changes in the terms of trade between wages/livestock and staple food commodities are indicative of the trends in purchasing power and the impact on the food security situation of households dependent on food purchases through income from daily wage labour and/or the sale of livestock.

Table 2: Prices of key COVID-19 items, week-on-week in July 2021, SYP

National average	Week 1 (SYP)	Week 2 (SYP)	Week 3 (SYP)	Week 4 (SYP)	% Change (July W4 & W1)
Surgeon mask	339	340	389	359	6%
Gloves (pair)	551	568	575	637	16%
Alcohol spray (200 ml)	2,165	2,191	2,239	2,270	5%
Bleach bottle (L)	1,401	1,414	1,408	1,400	0.07%
Hand gel (50 ml)	1,081	1,110	1,074	1,074	-1%
Soap bar	501	497	504	502	0.2%

COVID-19 NFIs

Between June and July 2021, the price of all monitored COVID-19 items decreased except for surgeon masks and plastic gloves. M-o-m, the price of surgeon masks and plastic gloves increased by five and 10 percent, reaching SYP 357/mask and SYP 583/pair, respectively. Moreover, m-o-m, the price of hand gel, bleach and alcohol spray decreased by one percent while the price of soap bars decreased by two percent, reaching SYP 1,085/50 ml, SYP 1,406/litre, SYP 2,216/200 ml and SYP 501/bar, respectively.

Compared to July 2020, the price of all monitored COVID-19 items increased except for surgeon masks, the price of which decreased by three percent. The price of plastic gloves and alcohol spray increased by 114 and 60 percent, respectively. Moreover, the prices of hand gel, bleach and soap bars increased by 20, 26 and 29 percent, respectively.

Additionally, the price of all COVID-19 monitored items in July 2021 increased compared to February 2020 (prior to the COVID-19 outbreak in Syria). For example, the price of hand gel, alcohol spray and plastic gloves increased by 350, 430 and 770 percent, respectively. Also, the price of bleach, soap bars and surgeon masks increased by 238, 236 and 351 percent, respectively.

Table 3: Monthly price changes of key COVID-19 items, SYP

National average	Feb-20 (SYP)	Jul-21 (SYP)	% Change
Surgeon mask	79	357	351%
Gloves (pair)	67	583	770%
Alcohol spray (200 ml)	418	2,216	430%
Bleach bottle (L)	416	1,406	238%
Hand gel (50 ml)	241	1,085	350%
Soap bar	149	501	236%

Source: WFP

Chart 13: Retail Prices of Fresh Eggs, SYP

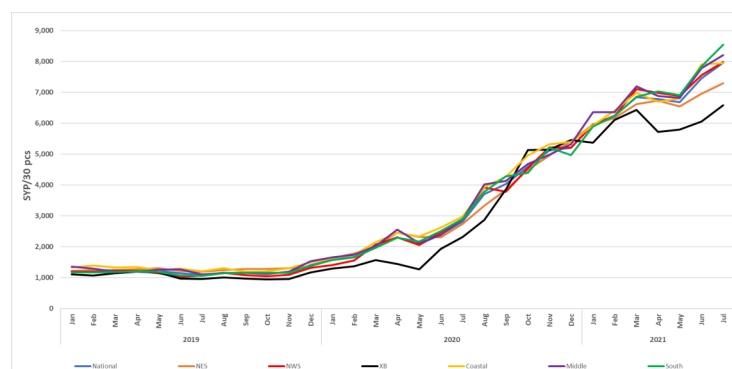
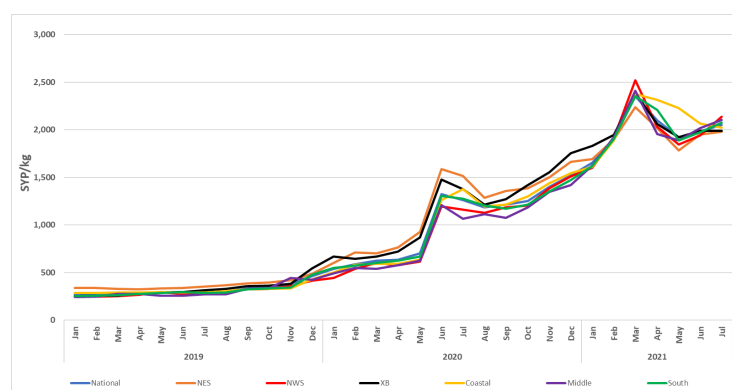


Chart 14: Retail Prices of Sugar, SYP



Source: WFP

Key food-items retail prices

Fresh eggs

M-o-m, the national average retail price of fresh eggs throughout Syria increased by seven percent reaching SYP 7,958/30 eggs. Moreover, the price of fresh eggs increased by 34 percent since January 2021 (six months ago) and by 182 percent since July 2020.

As-Sweida recorded the highest fresh eggs price at SYP 10,290/30 eggs (up 24 percent m-o-m), while Al-Hasakeh recorded the lowest price at SYP 6,729/30 eggs (up six percent m-o-m).

Broken down by region, the Southern region recorded the highest price at SYP 8,549/30 eggs (up nine percent m-o-m), followed by the Middle region at SYP 8,209/30 eggs (up six percent m-o-m). The Cross-Border region recorded the lowest price of fresh eggs at SYP 6,586/30 eggs (up nine percent m-o-m), followed by Northeast Syria at SYP 7,299/30 eggs (up five percent m-o-m).

Sugar

In July 2021, the national monthly average retail price of sugar increased by three percent m-o-m, reaching SYP 2,050/kg. Moreover, the national monthly average price increased by 24 percent since January 2021 (six months ago) and by 62 percent since July 2020. Lattakia recorded the highest monthly average sugar price at SYP 2,187/kg (up six percent m-o-m), while Al-Hasakeh recorded the lowest monthly average price of SYP 1,756/kg (up two percent m-o-m).

Broken down by region, Northwest Syria recorded the highest monthly average price at SYP 2,136/kg (up 10 percent m-o-m), followed by the Middle region at SYP 2,105/kg (up four percent m-o-m). Northeast Syria recorded the lowest monthly average price at SYP 1,979/kg (up one percent m-o-m), followed by the Cross-Border region at SYP 1,987/kg (unchanged m-o-m).

Table 4. Market Price of Main Commodities in Syrian Pounds: July 2021																		
Commodity	Governorate	Current Price	Price change	Price change	Price change	Average Change	Average Change	Average Change	Commodity	Governorate	Current Price	Price change	Price change	Price change	Average Change	Average Change	Average Change	
			1M (%)	6 M (%)	12 M (%)	1M	6 M	12 M				1M (%)	6 M (%)	12 M (%)	1M	6 M	12 M	
Bread Public (1.1 kg)	Aleppo*	212	62	77	401	↑	↑	↑	Dates (kg)	Aleppo	4,320	2	-4	19	↗	↘	↗	
	Damascus	175	75	75	292	↑	↑	↑		Damascus	5,486	12	24	50	↗	↗	↑	
	Dar'a	207	59	65	286	↑	↑	↑		Dar'a	4,834	2	20	32	↗	↗	↑	
	Deir-ez-Zor	226	58	117	256	↑	↑	↑		Deir-ez-Zor	2,644	-18	-29	8	↘	↘	↗	
	Hama	221	64	121	423	↑	↑	↑		Hama	4,500	-	0	25	↔	↔	↗	
	Al-Hasakeh	175	75	75	314	↑	↑	↑		Al-Hasakeh	4,125	-1	5	63	↘	↗	↑	
	Homs	219	75	119	417	↑	↑	↑		Homs	4,030	-9	-10	11	↘	↘	↗	
	Idleb*	NA	-	-	-	↔	↔	↔		Idleb	4,093	2	21	64	↗	↗	↑	
	Lattakia	265	123	159	318	↑	↑	↑		Lattakia	6,067	-12	7	41	↘	↗	↑	
	Quneitra	225	50	74	432	↑	↑	↑		Quneitra	4,082	7	-5	19	↗	↘	↗	
	Ar-Raqqa	202	17	87	175	↗	↑	↑		Ar-Raqqa	3,942	-1	-4	35	↘	↘	↑	
	Rural Damascus	188	81	88	283	↑	↑	↑		Rural Damascus	4,917	4	8	38	↗	↗	↑	
	As-Sweida	175	75	75	314	↑	↑	↑		As-Sweida	5,250	-0.01	17	54	↘	↗	↑	
	Tartous	217	51	105	281	↑	↑	↑		Tartous	5,531	-7	12	72	↘	↗	↑	
Bread Shop (1.1 kg)	Aleppo	1,744	5	17	137	↗	↗	↑	Diesel (parallel market, L)	Aleppo	2,537	22	78	203	↗	↑	↑	
	Damascus	1,994	-2	66	303	↘	↑	↑		Damascus	2,663	26	122	552	↑	↑	↑	
	Dar'a	1,939	1	47	220	↗	↑	↑		Dar'a	2,610	44	121	512	↑	↑	↑	
	Deir-ez-Zor	NA	-	-	-	↔	↔	↔		Deir-ez-Zor	1,517	47	94	445	↑	↑	↑	
	Hama	2,007	-1	22	128	↘	↗	↑		Hama	2,182	45	118	445	↑	↑	↑	
	Al-Hasakeh	1,013	-1	-63	38	↘	↘	↑		Al-Hasakeh	229	-10	53	53	↘	↑	↑	
	Homs	1,771	1	61	101	↗	↑	↑		Homs	1,961	36	96	390	↑	↑	↑	
	Idleb	1,659	6	34	13	↗	↑	↗		Idleb	2,467	10	29	107	↗	↑	↑	
	Lattakia	1,859	41	166	238	↑	↑	↑		Lattakia	1,877	19	81	400	↗	↑	↑	
	Quneitra	2,000	2	-11	11	↗	↘	↗		Quneitra	2,315	51	102	528	↑	↑	↑	
	Ar-Raqqa	1,641	3	49	273	↗	↑	↑		Ar-Raqqa	886	1	124	263	↗	↑	↑	
	Rural Damascus	2,062	1	59	317	↗	↑	↑		Rural Damascus	2,420	16	86	526	↗	↑	↑	
	As-Sweida	2,109	2	9	102	↗	↗	↑		As-Sweida	2,327	28	89	396	↑	↑	↑	
	Tartous	1,201	-12	-40	-25	↘	↘	↘		Tartous	2,271	45	126	475	↑	↑	↑	
Bulgur (kg)	Aleppo	1,842	2	27	63	↗	↑	↑	US Dollar exchange rate (parallel market, \$1)	Aleppo	3,191	-2	-10	-29	↘	↘	↘	
	Damascus	2,025	0.03	35	57	↗	↑	↑		Damascus	3,265	-2	-11	-31	↘	↘	↘	
	Dar'a	2,223	4	54	84	↗	↑	↑		Dar'a	3,185	-1	-10	-30	↘	↘	↘	
	Deir-ez-Zor	1,695	-4	13	100	↘	↗	↑		Deir-ez-Zor	3,213	-1	-9	-27	↘	↘	↘	
	Hama	2,190	1	42	59	↗	↑	↑		Hama	3,225	-2	-10	-31	↘	↘	↘	
	Al-Hasakeh	1,746	-1	4	33	↘	↗	↑		Al-Hasakeh	3,218	-4	-10	-28	↘	↘	↘	
	Homs	2,330	3	50	69	↗	↑	↑		Homs	3,225	-2	-10	-31	↘	↘	↘	
	Idleb	1,542	4	33	41	↗	↑	↑		Idleb	3,223	-1	-11	-28	↘	↘	↘	
	Lattakia	2,040	-6	28	57	↘	↑	↑		Lattakia	3,183	-1	-8	-30	↘	↘	↘	
	Quneitra	2,056	7	41	85	↗	↑	↑		Quneitra	3,180	-1	-10	-30	↘	↘	↘	
	Ar-Raqqa	1,900	-	43	58	↔	↑	↑		Ar-Raqqa	3,220	-4	-10	-29	↘	↘	↘	
	Rural Damascus	2,020	0.3	33	50	↗	↑	↑		Rural Damascus	3,249	-2	-11	-30	↘	↘	↘	
	As-Sweida	2,292	-4	46	70	↘	↑	↑		As-Sweida	3,208	-1	-10	-30	↘	↘	↘	
	Tartous	2,178	2	23	58	↗	↗	↑		Tartous	3,175	-1	-8	-30	↘	↘	↘	
Butane Cylinder (parallel market, 25 kg)	Aleppo	43,954	19	69	247	↗	↑	↑	Eggs (carton)	Aleppo	7,335	5	28	178	↗	↑	↑	
	Damascus	28,556	20	67	90	↗	↑	↑		Damascus	8,583	9	45	178	↗	↑	↑	
	Dar'a	64,104	67	131	242	↑	↑	↑		Dar'a	8,541	8	44	190	↗	↑	↑	
	Deir-ez-Zor	22,303	11	40	126	↑	↑	↑		Deir-ez-Zor	8,016	6	38	158	↗	↑	↑	
	Hama	43,992	55	60	335	↑	↑	↑		Hama	7,987	3	26	175	↗	↑	↑	
	Al-Hasakeh	11,750	1	10	116	↗	↗	↑		Al-Hasakeh	6,729	6	9	148	↗	↗	↑	
	Homs	32,905	25	20	226	↗	↗	↑		Homs	8,252	6	30	185	↗	↑	↑	
	Idleb	37,990	14	29	114	↗	↑	↑		Idleb	7,113	12	34	208	↗	↑	↑	
	Lattakia	27,300	9	4	221	↗	↗	↑		Lattakia	7,698	-6	28	141	↘	↑	↑	
	Quneitra	39,782	39	108	108	↑	↑	↑		Quneitra	8,123	8	44	244	↗	↑	↑	
	Ar-Raqqa	30,000	-5	89	292	↘	↑	↑		Ar-Raqqa	7,074	7	20	180	↗	↗	↑	
	Rural Damascus	33,006	44	86	116	↑	↑	↑		Rural Damascus	7,793	1	31	153	↗	↑	↑	
	As-Sweida	39,208	61	63	120	↑	↑	↑		As-Sweida	10,290	24	70	243	↗	↑	↑	
	Tartous	41,056	54	37	280	↑	↑	↑		Tartous	8,144	5	39	194	↗	↑	↑	
Cheese (kg)	Aleppo	7,828	11	43	136	↗	↑	↑	Eggplant (kg)	Aleppo	726	-15	-41	116	↘	↘	↑	
	Damascus	6,625	7	26	139	↗	↑	↑		Damascus	1,313	75	26	164	↑	↑	↑	
	Dar'a	6,666	10	38	114	↗	↑	↑		Dar'a	702	-10	-33	175	↘	↘	↑	
	Deir-ez-Zor	6,133	-2	25	103	↘	↗	↑		Deir-ez-Zor	362	-45	-67	53	↘	↘	↑	
	Hama	7,175	10	39	118	↗	↑	↑		Hama	768	11	-35	181	↗	↘	↑	
	Al-Hasakeh	5,635	2	8	114	↗	↗	↑		Al-Hasakeh	783	-53	-29	102	↘	↘	↑	
	Homs	6,378	12	24	97	↗	↗	↑		Homs	808	12	-32	195	↗	↘	↑	
	Idleb	6,590	6	12	110	↗	↗	↑		Idleb	856	-20	-47	22	↘	↘	↗	
	Lattakia	8,483	23	23	82	↗	↗	↑		Lattakia	632	-43	-48	208	↘	↘	↑	
	Quneitra	6,238	8	30	81	↗	↑	↑		Quneitra	764	1	-23	188	↗	↘	↑	
	Ar-Raqqa	6,440	12	7	111	↗	↗	↑		Ar-Raqqa	522	-57	-53	-3	↘	↘	↘	
	Rural Damascus	5,936	-1	15	142	↘	↗	↑		Rural Damascus	834	11	-20	55	↗	↘	↑	
	As-Sweida	7,169	2	47	110	↗	↑	↑		As-Sweida	646	-9	-42	187	↘	↘	↑	
	Tartous	6,981	12	31	68	↗	↑	↑		Tartous	1,242	34	11	352	↑	↑	↑	
Chickpeas (kg)	Aleppo	2,150	4	15	107	↗	↗	↑	Fish (tuna, canned) - 160 gm	Aleppo	1,982	2	25	69	↗	↑	↑	
	Damascus	3,139	16	95	126	↗	↑	↑		Damascus	2,369	-4	15	26	↘	↗	↑	
	Dar'a	2,900	23	105	125	↗	↑	↑		Dar'a	2,401	-4	30	38	↘	↑	↑	
	Deir-ez-Zor	1,931	26	29	86	↑	↑	↑		Deir-ez-Zor	2,062	-8	10	62	↘	↗	↑	
	Hama	3,173	3	55	141	↗	↑	↑		Hama	2,520	2	-1	37	↗	↘	↑	
	Al-Hasakeh	1,875	3	5	6	↗	↗	↗		Al-Hasakeh	2,219	-0.2	4	8	↘	↗	↗	
	Homs	3,075	2	52	132	↗	↑	↑		Homs	2,501	4	-1	35	↗	↘	↑	
	Idleb	2,183	6	33	116	↗	↑	↑		Idleb	2,060	4	11	95	↗	↗	↑	
	Lattakia	3,360	4	76	137	↗	↑	↑		Lattakia	2,947	0.5	34	60	↗	↑	↑	
	Quneitra	3,333	31	140	199	↑	↑	↑		Quneitra	2,371	6	29	45	↗	↑	↑	
	Ar-Raqqa	3,567	-1	110	147	↘	↑	↑		Ar-Raqqa	2,415	-0.2	27	45	↘	↑	↑	
	Rural Damascus	2,717	8	65	101	↗	↑	↑		Rural Damascus	2,474	1	17	26	↗	↗	↑	
	As-Sweida	2,886	9	63	90	↗	↑	↑		As-Sweida	2,521	1	34	58	↗	↑	↑	
	Tartous	3,006	-2	43	119	↘	↑	↑		Tartous	2,328	-7	-3	3	↘	↘	↗	
Key:	↑	Price increase equal to or greater than 25 percent																
	↗	Price increase between 0.1 and 25 percent																
	↔	No price change																
	↘	Price decrease below normal price fluctuation																
* Bread (bakery) in Aleppo and Idleb represents subsidized bread in Government of Syria areas											* Key for unskilled labor wage and exchange rate:	↑	Increase equal to or greater than 25 percent					
												↗	Increase between 0.1 and 25 percent					
												↔	No change					
												↘	Decrease below normal fluctuation					

Commodity	Governorate	Current Price	Price change 1M (%)	Price change 6 M (%)	Price change 12 M (%)	Average Change 1M	Average Change 6 M	Average Change 12 M	Commodity	Governorate	Current Price	Price change 1M (%)	Price change 6 M (%)	Price change 12 M (%)	Average Change 1M	Average Change 6 M	Average Change 12 M
Iodised salt (kg)	Aleppo	771	5	36	48	↗	↑	↑	Sheep 2Y old Male (head)	Aleppo	545,667	13	58	38	↗	↑	↑
	Damascus	436	6	30	149	↗	↑	↑		Damascus	518,889	10	25	8	↗	↗	↗
	Dar'a	586	-0.2	73	77	↓	↑	↑		Dar'a	511,146	12	39	56	↗	↑	↑
	Deir-ez-Zor	292	-37	-3	99	↓	↓	↓		Deir-ez-Zor	448,542	-3	16	27	↓	↗	↑
	Hama	748	4	-1	-0.4	↗	↓	↓		Hama	522,500	10	31	69	↗	↑	↑
	Al-Hasakeh	510	5.4	28	39	↗	↑	↑		Al-Hasakeh	437,500	2	-3	38	↗	↓	↑
	Homs	908	-0.4	22	20	↓	↗	↗		Homs	608,119	2	53	96	↗	↑	↑
	Idleb	454	5	-6	111	↗	↓	↓		Idleb	579,468	9	43	18	↗	↑	↗
	Lattakia	703	-27	34	411	↓	↑	↑		Lattakia	381,933	2	-2	-7	↗	↓	↓
	Quneitra	380	-3	-2	24	↓	↓	↗		Quneitra	556,406	22	49	55	↗	↑	↑
	Ar-Raqqa	755	-5	97	133	↓	↗	↑		Ar-Raqqa	478,250	-0.4	4	55	↓	↗	↑
	Rural Damascus	423	1	5	244	↗	↗	↑		Rural Damascus	527,470	11	27	11	↗	↑	↗
	As-Sweida	868	0.02	142	160	↗	↑	↑		As-Sweida	463,125	-9	1	48	↓	↗	↑
	Tartous	950	-6	42	533	↓	↑	↑		Tartous	403,417	-25	4	21	↓	↗	↗
Red split lentils (kg)	Aleppo	2,685	-1	21	102	↓	↗	↑	Sugar (kg)	Aleppo	2,013	6	21	60	↗	↗	↑
	Damascus	3,044	1	68	115	↗	↑	↑		Damascus	2,043	5	27	67	↗	↑	↑
	Dar'a	2,588	-2	97	95	↓	↑	↑		Dar'a	2,111	6	33	82	↗	↑	↑
	Deir-ez-Zor	1,929	-17	7	92	↓	↗	↑		Deir-ez-Zor	2,097	8	28	33	↗	↑	↑
	Hama	2,760	-1	30	108	↓	↑	↑		Hama	2,127	3	31	100	↗	↑	↑
	Al-Hasakeh	1,817	-2	-3	25	↓	↓	↗		Al-Hasakeh	1,756	2	2	15	↗	↗	↗
	Homs	2,913	6	35	123	↗	↑	↑		Homs	2,070	5	27	94	↗	↑	↑
	Idleb	2,429	4	10	60	↗	↗	↑		Idleb	2,121	1	12	56	↗	↗	↑
	Lattakia	2,913	1	38	107	↗	↑	↑		Lattakia	2,187	6	34	61	↗	↑	↑
	Quneitra	2,796	-1	64	145	↓	↑	↑		Quneitra	2,060	6	30	78	↗	↑	↑
	Ar-Raqqa	4,000	0	86	182	↔	↑	↑		Ar-Raqqa	2,015	-6	18	37	↓	↗	↑
	Rural Damascus	2,875	-2	45	125	↓	↑	↑		Rural Damascus	2,045	5	22	37	↗	↗	↑
	As-Sweida	2,773	-4	48	100	↓	↑	↑		As-Sweida	2,080	1	24	75	↗	↗	↑
	Tartous	2,603	-8	22	60	↓	↗	↑		Tartous	1,885	-9	19	36	↓	↗	↑
Meat (beef, kg)	Aleppo	20,858	18	43	79	↗	↑	↑	Tomato (kg)	Aleppo	579	-29	-46	124	↓	↓	↑
	Damascus	22,167	3	35	55	↗	↑	↑		Damascus	839	1	-8	99	↗	↓	↑
	Dar'a	19,448	1	38	75	↗	↑	↑		Dar'a	590	-22	-40	128	↓	↓	↑
	Deir-ez-Zor	16,364	1	29	53	↗	↑	↑		Deir-ez-Zor	640	-9	-39	117	↓	↓	↑
	Hama	19,650	-0.4	28	84	↓	↑	↑		Hama	705	-2	-49	158	↓	↓	↑
	Al-Hasakeh	17,875	-0.3	17	45	↓	↗	↑		Al-Hasakeh	573	-48	-55	96	↓	↓	↑
	Homs	19,681	4	28	84	↗	↑	↑		Homs	704	-11	-49	150	↓	↓	↑
	Idleb	19,578	7	32	61	↗	↑	↑		Idleb	1,341	-1	28	260	↓	↑	↑
	Lattakia	22,133	-5	38	103	↓	↑	↑		Lattakia	883	3	-23	110	↗	↓	↑
	Quneitra	20,000	3	43	44	↗	↑	↑		Quneitra	638	-15	-32	145	↓	↓	↑
	Ar-Raqqa	15,500	-1	45	92	↓	↑	↑		Ar-Raqqa	509	-37	-63	16	↓	↓	↗
	Rural Damascus	35,419	71	117	186	↑	↑	↑		Rural Damascus	851	-8	-10	136	↓	↓	↑
	As-Sweida	20,000	1	45	67	↗	↑	↑		As-Sweida	766	-4	-30	187	↓	↓	↑
	Tartous	17,713	-27	16	53	↓	↗	↑		Tartous	2,007	113	49	518	↑	↑	↑
White beans (kg)	Aleppo	4,732	-3	4	88	↓	↗	↑	Unskilled Labor wage*	Aleppo	6,518	-0.7	49	48	↓	↑	↑
	Damascus	6,535	5	18	78	↗	↗	↑		Damascus	10,208	7	42	67	↗	↑	↑
	Dar'a	6,766	1	18	129	↗	↗	↑		Dar'a	6,286	7	35	80	↗	↑	↑
	Deir-ez-Zor	5,711	2	-0.3	168	↗	↓	↑		Deir-ez-Zor	4,847	13	62	43	↗	↑	↑
	Hama	5,648	-1	-15	154	↓	↓	↑		Hama	6,733	0	50	135	↔	↑	↑
	Al-Hasakeh	4,017	1	6	76	↗	↗	↑		Al-Hasakeh	5,438	6	9	15	↗	↗	↗
	Homs	6,031	-0.5	-10	171	↓	↓	↑		Homs	6,619	5	48	131	↗	↑	↑
	Idleb	4,869	7	28	175	↗	↑	↑		Idleb	7,108	0.5	6	36	↗	↗	↑
	Lattakia	6,137	-6	9	63	↓	↗	↑		Lattakia	7,233	-2	-0.2	25	↓	↓	↗
	Quneitra	5,625	2	185	208	↗	↑	↑		Quneitra	7,354	6	63	122	↗	↑	↑
	Ar-Raqqa	4,400	-0.4	-0.2	78	↓	↓	↑		Ar-Raqqa	8,367	18	71	98	↗	↑	↑
	Rural Damascus	6,105	-1	10	136	↓	↗	↑		Rural Damascus	9,565	9	35	99	↗	↑	↑
	As-Sweida	6,169	-8	-12	240	↓	↓	↑		As-Sweida	6,542	9	83	162	↗	↑	↑
	Tartous	6,736	3	13	157	↗	↗	↑		Tartous	7,044	-28	-9	28	↓	↓	↑
Vegetable oil (L)	Aleppo	6,472	-0.6	44	137	↓	↑	↑	Wheat Flour (kg)	Aleppo	1,883	3	48	94	↗	↑	↑
	Damascus	7,453	-0.2	49	141	↓	↑	↑		Damascus	1,907	3	39	65	↗	↑	↑
	Dar'a	7,543	0.2	48	158	↗	↑	↑		Dar'a	2,001	6	55	70	↗	↑	↑
	Deir-ez-Zor	6,833	-1	50	128	↓	↑	↑		Deir-ez-Zor	1,663	-8	19	61	↓	↗	↑
	Hama	7,427	0	43	158	↔	↑	↑		Hama	1,947	-1	38	100	↓	↑	↑
	Al-Hasakeh	5,185	-2	29	109	↓	↑	↑		Al-Hasakeh	1,740	-0.1	32	35	↓	↑	↑
	Homs	7,352	1	41	153	↗	↑	↑		Homs	1,868	-0.1	32	93	↓	↑	↑
	Idleb	5,824	-3	54	166	↓	↑	↑		Idleb	1,556	5	34	67	↗	↑	↑
	Lattakia	7,170	-6	35	112	↓	↑	↑		Lattakia	1,780	-12	32	68	↓	↑	↑
	Quneitra	7,486	-0.2	52	133	↓	↑	↑		Quneitra	1,846	5	52	62	↗	↑	↑
	Ar-Raqqa	6,290	-0.2	69	159	↓	↑	↑		Ar-Raqqa	2,000	0	97	117	↔	↑	↑
	Rural Damascus	7,542	0.2	49	130	↗	↑	↑		Rural Damascus	1,941	3	43	110	↗	↑	↑
	As-Sweida	7,681	3	47	157	↗	↑	↑		As-Sweida	2,057	-6	29	87	↓	↑	↑
	Tartous	6,197	-19	23	99	↓	↗	↑		Tartous	1,743	-10	35	64	↓	↑	↑
Parsley (packet)	Aleppo	226	17	42	98	↗	↑	↑	Pasta (spaghetti)	Aleppo	3,693	-1	69	152	↓	↑	↑
	Damascus	208	5	47	134	↗	↑	↑		Damascus	3,239	2	93	126	↗	↑	↑
	Dar'a	233	8	35	133	↗	↑	↑		Dar'a	3,200	5	89	141	↗	↑	↑
	Deir-ez-Zor	173	5	-10	166	↗	↓	↑		Deir-ez-Zor	2,792	7	138	191	↗	↑	↑
	Hama	177	-18	-1	27	↓	↓	↑		Hama	3,420	6	87	47	↗	↑	↑
	Al-Hasakeh	208	1	4	108	↗	↗	↑		Al-Hasakeh	1,250	4	-29	-16	↗	↓	↓
	Homs	265	-49	53	98	↓	↑	↑		Homs	4,144	-1	125	77	↓	↑	↑
	Idleb	244	7	25	12	↗	↑	↗		Idleb	2,174	2	36	87	↗	↑	↑
	Lattakia	246	18	54	134	↗	↑	↑		Lattakia	2,687	-28	3	104	↓	↗	↑
	Quneitra	244	-1	63	172	↓	↑	↑		Quneitra	3,004	-2	104	163	↓	↑	↑
	Ar-Raqqa	292	38	96	209	↑	↑	↑		Ar-Raqqa	1,708	0.1	-8	-8	↗	↓	↓
	Rural Damascus	215	7	34	126	↗	↑	↑		Rural Damascus	3,111	4	84	113	↗	↑	↓
	As-Sweida	200	-10	78	129	↓	↓	↑		As-Sweida	3,268	10	70	100	↗	↑	↑
	Tartous	697	286	249	469	↑	↑	↑		Tartous	2,750	-28	-1	110	↓	↓	↑
Rice (kg)	Aleppo	2,623	-1	29	90	↓	↑	↑	Yogurt (kg)	Aleppo	1,645	4	4	73	↗	↗	↑
	Damascus	2,214	-17	27	49	↓	↑	↑		Damascus	1,701	15	79	195	↗	↑	↑
	Dar'a	2,779	3	33	65	↗	↑	↑		Dar'a	1,521	9	49	132	↗	↑	↑
	Deir-ez-Zor	2,256	-6	37	59	↓	↑	↑		Deir-ez-Zor	949	0.4	27	118	↗	↑	↑
	Hama	2,473	1	45	83	↗	↑	↑		Hama	1,600	5	28	172	↗	↑	↑
	Al-Hasakeh	2,102	4	8	22	↗	↗	↗		Al-Hasakeh	1,433	-1	33	139	↓	↑	↑
	Homs	2,735	11	61	102	↗	↑	↑		Homs	1,265	7	2	115	↗	↗	↑
	Idleb	2,303	7	36	43	↗	↑	↑		Idleb	1,698	6	6	147	↗	↗	↑
	Lattakia	2,735	-1	33	64	↓	↑	↑		Lattakia	1,545	12	34	91	↗	↑	↑
	Quneitra	2,972	2	47	64	↗	↑	↑		Quneitra	1,647	22	126	205	↗	↑	↑
	Ar-Raqqa	2,115	0.1	-9	24	↗	↓	↗		Ar-Raqqa	1,167	1	-9	84	↗	↓	↑
	Rural Damascus	2,332	-7.0	34	24	↓	↓	↑		Rural Damascus	1,487	5	59	189	↗	↓	↑
	As-Sweida	2,477	1	38	56	↗	↑	↑		As-Sweida	1,366	1	37	94	↗	↑	↑
	Tartous	2,107	-13	5	49	↓	↗	↑		Tartous	1,447	1	19	87	↗	↗	↑