



# NIGERIA

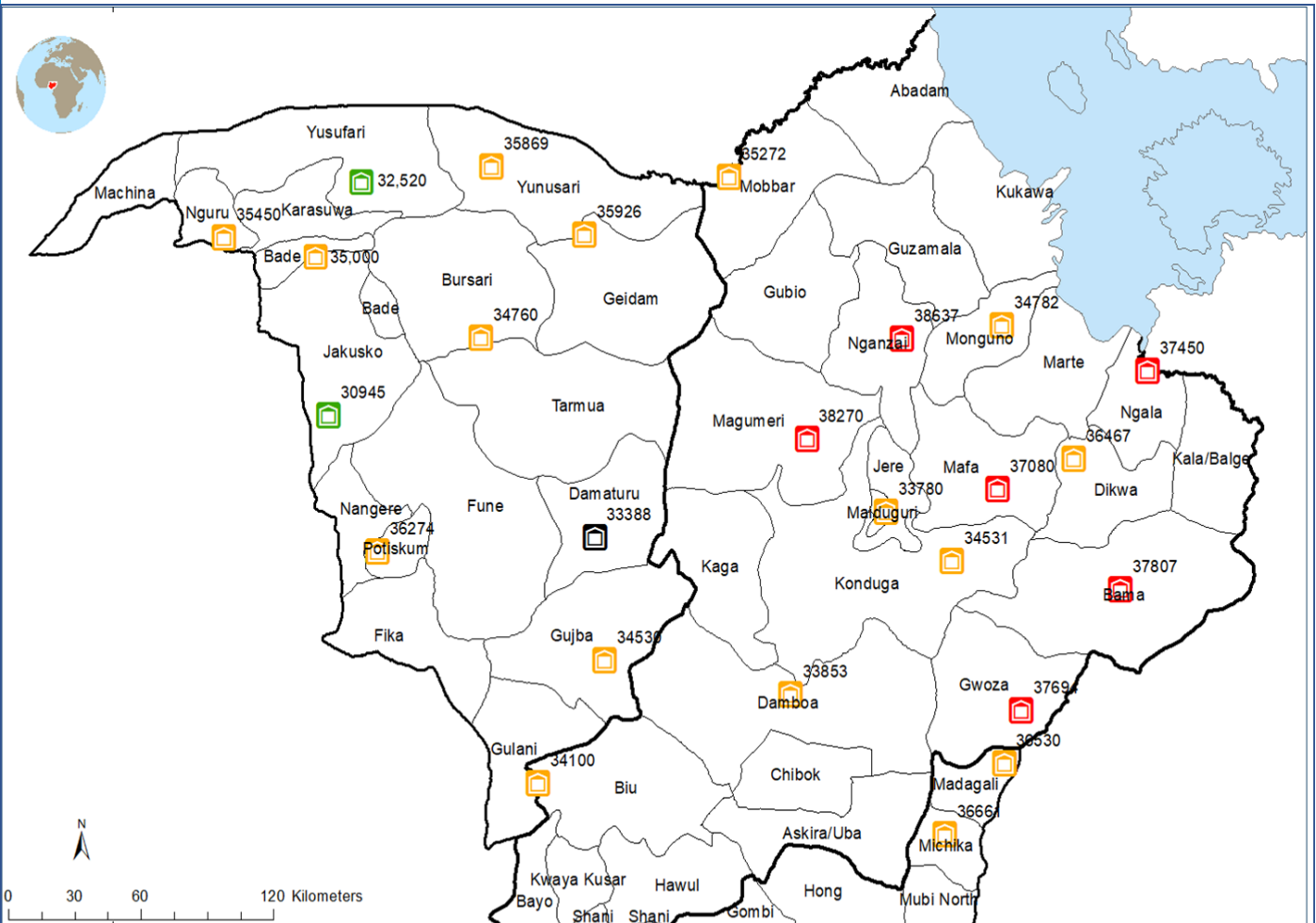
## Borno and Yobe States Market Monitoring

August 2021-ISSUE 51

### Highlights

- The nationwide food inflation rate (year on year) remained high at 20.30 percent in August, declining by only one percentage point compared to July. The unstable nature of the *naira*— which exchanged between N516 and N525 to a dollar on the parallel market continued to exert pressure on food prices throughout Nigeria.
- Compared to July, in August 2021, the staple food prices witnessed relative stability in Borno and Yobe states compared to last month. Consumers' purchasing power is still compromised with cereal prices having risen substantially compared to same time last year, particularly maize (53% year-on-year increase) and red beans (236%) in Maiduguri, while 25% and 70% in Damaturu respectively.
- The cost of 70 percent Survival Minimum Expenditure Basket (SMEB) for a family of five in Maiduguri and Jere in Borno State, increased by 4 percent from 24,686.62 Naira (July) to 25,662.83 Naira (August). Correspondingly, In Damaturu, the SMEB increased marginally by 4.3 percent from 22,403.91 Naira (July) to 23,371.53 Naira (August).

### SMEB per Market Location in BAY States August 2021



**SMEB Prices and Market Locations in BAY States**

  State Boundary    
   LGAs Boundary    
   Lake

  Reference SMEB (N32,006)    
   Marginally Higher than the Reference (1% - 10%)    
   Substantially Higher than the Reference (>10%)

Data sources: WFP office, WFP, Boundaries, OCHA, Roads, OpenStreetMap Contributors, Population, GeoNames

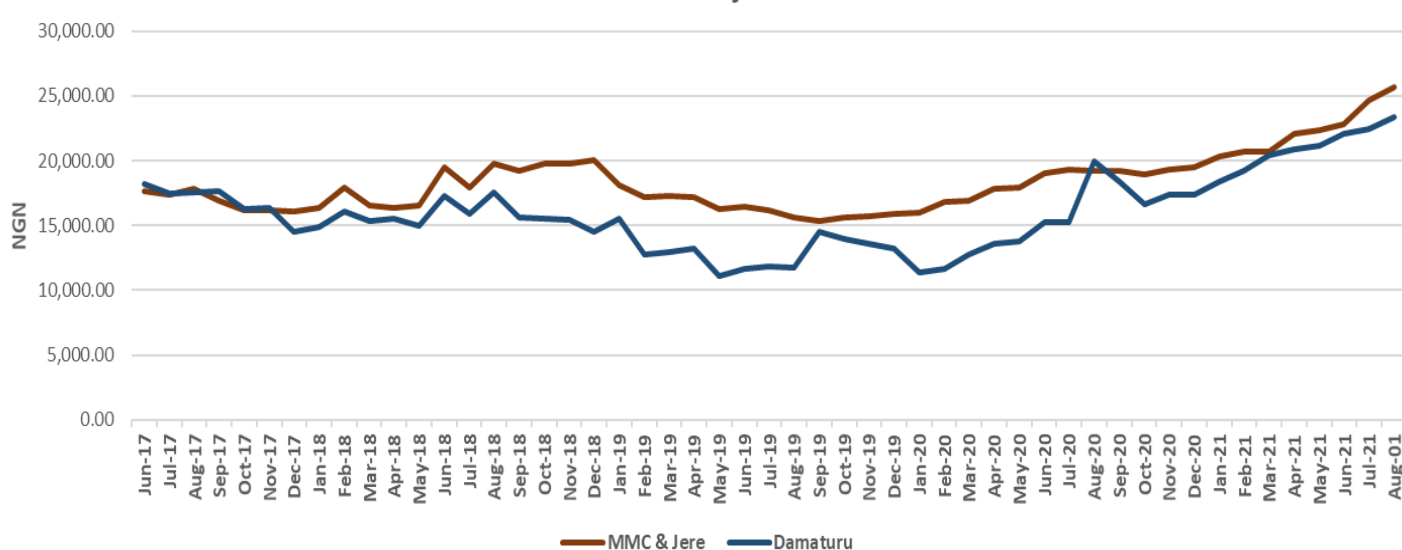
**Table 1: Transfer value calculated for 5 household members in Maiduguri and Jere markets for one month**

HOUSEHOLD SIZE			5				
Food Item	gms/day/pp	Kc/day/pp	gms/HH/day	gms/HH/month	kg/HH/month	Price/kg-Naira (MPM)	Price/HH/month - Naira
Rice	150	540	750	22,500	22.50	487	10,964
Maize	250	913	1250	37,500	37.50	253	9,483
Beans	75	255	375	11,250	11.25	760	8,550
Palm oil	10	88	50	1,500	1.50	971	1,456
Groundnut	15	85	75	2,250	2.25	842	1,895
Sugar	10	39	50	1,500	1.50	571	857
G/nut oil/Veg Oil	20	177	100	3,000	3.00	982	2,946
Salt	5	0	25	750	0.75	226	170
Onion	8	3	40	1,200	1.20	284	341
<b>Total</b>		<b>2,100</b>					<b>N 36,661.18</b>
Cost food basket at 70%		<b>1,470</b>					<b>N 25,662.83</b>
<b>Per capita based on 70% transfer value</b>							<b>N 5,132.57</b>

**Table 2: Transfer value calculated for 5 household members in Damaturu markets for one month**

HOUSEHOLD SIZE			5				
Food Item	gms/day/pp	Kc/day/pp	gms/HH/day	gms/HH/month	kg/HH/month	Price/kg-Naira (MPM)	Price/HH/month - Naira
Rice	150	540	750	22,500	22.50	459	10,326
Maize	250	913	1250	37,500	37.50	320	12,000
Beans	75	255	375	11,250	11.25	476	5,355
Palm oil	10	88	50	1,500	1.50	667	1,000
Groundnut	15	85	75	2,250	2.25	500	1,125
Sugar	10	39	50	1,500	1.50	508	762
G/nut oil/Veg Oil	20	177	100	3,000	3.00	800	2,400
Salt	5	0	25	750	0.75	160	120
Onion	8	3	40	1,200	1.20	250	300
<b>Total</b>		<b>2,100</b>					<b>N 33,387.89</b>
Cost food basket at 70%		<b>1,470</b>					<b>N 23,371.53</b>
<b>Per capita based on 70% transfer value</b>							<b>N 4,674.31</b>

*Trend in the cost of SMEB*



The value of SMEB continues to increase in Maiduguri, Jere, and Damaturu due to the increase in the price of local rice, maize, red beans, palm oil, groundnut, sugar, and vegetable oil, underscored by below-average market supply as demand continues to increase. The above tables and trends apply to MMC/Jere, and Damaturu only.

## SMEB in Other LGAs in Borno, Yobe, and Adamawa markets

WFP and partners covered about 33 markets in 26 LGAs in the August 2021 edition of the of the bulletin, 20 markets in Borno, 11 in Yobe, and 2 in Adamawa states. The SMEB, in different LGAs, are as below: -

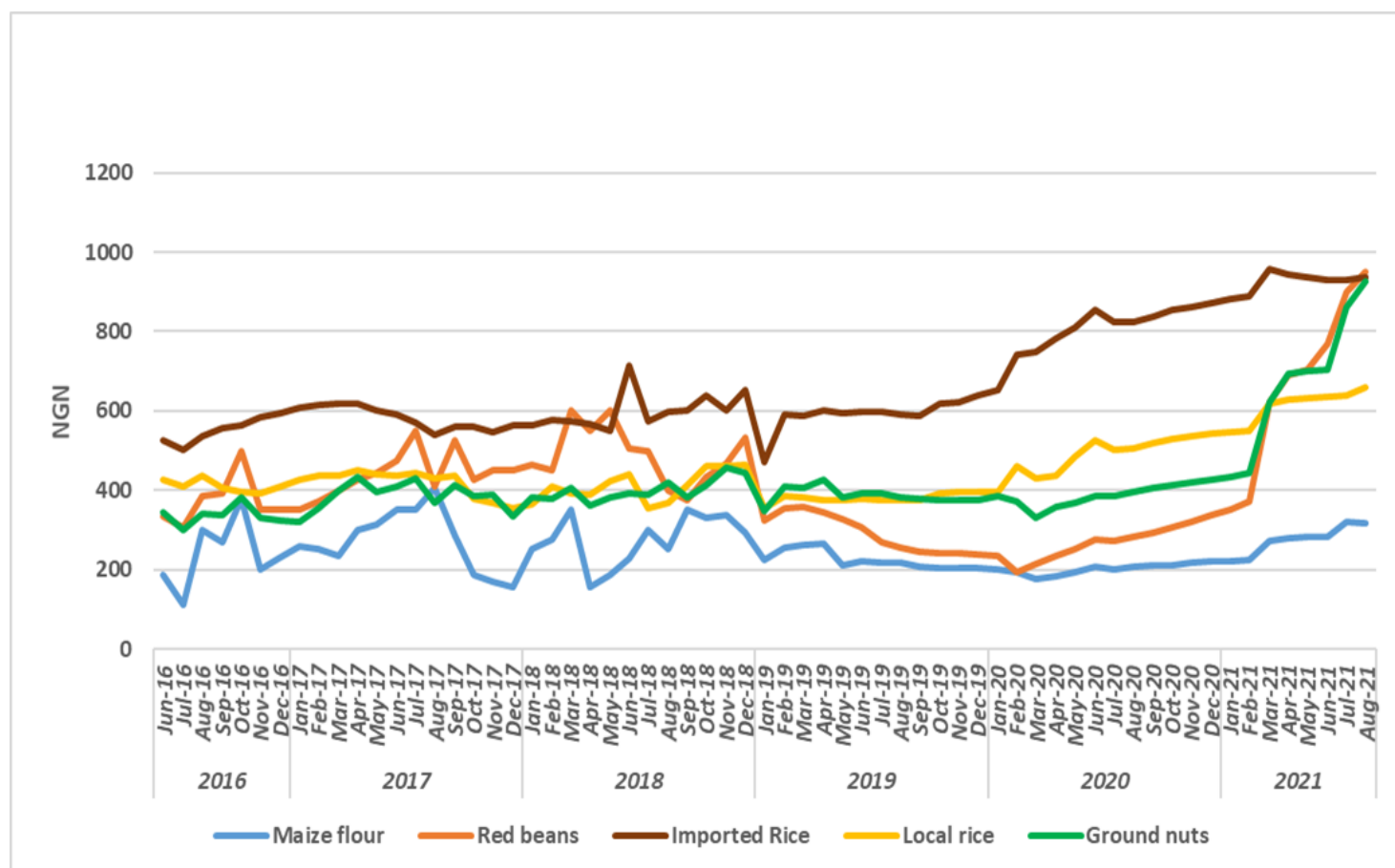
TRANSFER VALUE ACROSS WFP OPERATIONAL AREAS IN BAY STATES August 2021							
State	LGA	Ward	Reference Market where data was collected from	100% TOTAL Food MEB for HH size 5	100% Per capita HH size 5	70% TOTAL Food MEB for HH size 5	70% Per capita HH size 5
Borno	MMC&Jere			36,661	7,332	25,663	5,133
Borno	Bama	Kasugula	Bama	37,807	7,561	26,465	5,293
Borno	Damboa	Damboa	Damboa Market	33,853	6,771	23,697	4,739
Borno	Dikwa	Dikwa	Dikwa Central	36,467	7,293	25,527	5,105
Borno	Gwoza	Gwoza	Gwoza Centra	37,694	7,539	26,386	5,277
Borno	Konduga	Konduga	Konduga Market	34,531	6,906	24,172	4,834
Borno	Mafa	Mafa	Mafa Tasha	37,080	7,416	25,956	5,191
Borno	Magumeri	Magumeri	Magumeri Central	38,270	7,654	26,789	5,358
Borno	Mobbar	Damasak	Damasak Central	35,272	7,054	24,690	4,938
Borno	Mungonu	Monguno	Monguno main	34,782	6,956	24,348	4,870
Borno	Ngala	Ngala	Ngala market	37,450	7,490	26,215	5,243
Borno	Nganzai	Gajiram	Gajiram market	38,637	7,727	27,046	5,409
Yobe	Damaturu	Nayinawa	Damaturu Sunday Market	33,388	6,678	23,372	4,674
Yobe	Gujba	Buniyadi North / South	Buni Yadi Market	34,530	6,906	24,171	4,834
Yobe	Bursari	Bayamari	Dapchi Maket	34,760	6,952	24,332	4,866
Yobe	Bade	Sarkin Hausawa	Gashua Market	35,000	7,000	24,500	4,900
Yobe	Geidam	Hausari	Geidam Central Market	35,926	7,185	25,149	5,030
Yobe	Jakusko	Buduwa	Jakusko Market	30,945	6,189	21,661	4,332
Yobe	Nguru	Nguru	Nguru Central Market	35,450	7,090	24,815	4,963
Yobe	Potiskum	Bolewa 'A'	Potiskum Grains Market	36,274	7,255	25,392	5,078
Yobe	Gulani	Borno Kiji/Tetteba	Tetaba Market	34,100	6,820	23,870	4,774
Yobe	Yunusari	Mairari	Yunusari Market	35,869	7,174	25,108	5,022
Yobe	Yusufari	Yusufari	Yusufari central market	32,520	6,504	22,764	4,553
Adamawa	Madagali	Madagali	Madagali Market	36,530	7,306	25,571	5,114
Adamawa	Michika	Bazza Margi	Michika market	33,780	6,756	23,646	4,729

## Key Staple Food Prices in MMC, Jere and Damaturu

The below table shows the percentage variations in August 2021 market prices compared to July 2021, May 2021, and August 2020 of staple food prices in MMC/Jere in Borno state and Damaturu in Yobe state.

Markets	Location	Variation % compared to last month	Variation % compared to 3 months	Variation % compared to same period last year	Markets	Location	Variation % compared to last month	Variation % compared to 3 months	Variation % compared to same period last year
MMC and Jere	Maize	-2%	11%	53%	Damaturu	Maize	0%	14%	25%
	Red beans	6%	35%	236%		Red beans	8%	8%	70%
	Rice (Imported)	1%	0%	13%		Rice (Imported)	11%	11%	-1%
	Rice (Local)	3%	4%	30%		Rice (Local)	7%	7%	-3%
	Groundnuts	7%	33%	135%		Groundnuts	10%	22%	-8%
	Relative stability (-4% to 4%)								
	Marginal increase (-14% to 14%)								
	Substantial increase (15% and above)								

## Key Food Price Trends for MMC & Jere (Borno) (2016–2021)



Contact: WFP Nigeria Research, Assessments and M&E unit, Nigeria.VAM@wfp.org

<https://dataviz.vam.wfp.org>