



@WFP/Jessica Lawson

### Highlights

- o The national average price of WFP's standard reference food basket increased by four percent between July and August 2021, reaching SYP 173,634 (USD 69 at the official exchange rate of SYP 2,500/USD).
- o On 7 August, the Governor of Damascus issued a decision to stipulate specific opening and closing times for all commercial markets, shops, restaurants, and various economic activities in the governorate, aiming to save energy to be redirected to residential users.
- o On 15 August, the Ministry of Internal Trade and Consumer Protection announced subsidised bread distributions through smart cards and restricted delivery to weekly quotas by family size.
- o In August 2021, the Syrian pound's informal exchange rate weakened by four percent, reaching SYP 3,358/USD. Compared to July 2020, the Syrian pound depreciated by 36 percent.
- o The informal national average price of transport diesel and one butane gas cylinder (25,000 L) increased respectively by 10 and 31 percent in August compared to July 2021, reaching SYP 2,297/litre and SYP 49,612/refill.
- o For further information, please contact:

Jan Michiels at  
Jan.Michiels@wfp.org

Abdelrahman Hamza at  
Abdelrahman.Hamza@wfp.org

### Standard Food Basket<sup>1</sup>

In August 2021, the national average price of a standard reference food basket increased by four percent compared to July 2021, reaching SYP 173,634. The national average food basket price was 28 percent higher than that of February 2021 (six months ago) and 107 percent higher compared to August 2020 (Figure 1). This is the second consecutive month-on-month (m-o-m) increase in the food basket price since April 2021. This increase is mainly attributed to the ongoing fuel shortage countrywide and the increase in the informal price of diesel between July and August 2021.

M-o-m, 11 governorates recorded an increasing average reference food basket price in August 2021. The highest m-o-m increase of 12 percent was reported in Deir-ez-Zor where the cost of the basket reached SYP 162,698, while the lowest m-o-m increase (one percent) was reported in Ar-Raqqa where the price rose to SYP 179,889. The reference food basket price in Homs, Lattakia and As-Sweida remained unchanged m-o-m. Idleb and Quneitra reported the highest average food basket price at SYP 197,087 and SYP 182,784, respectively.

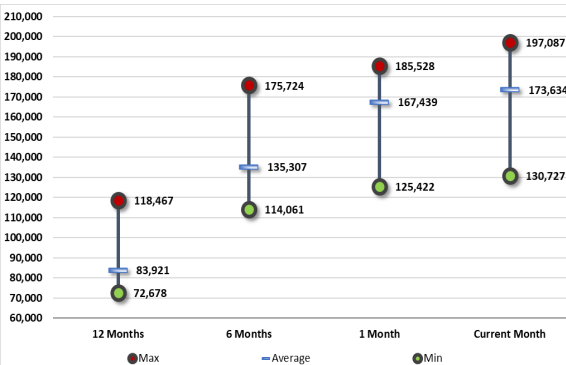
Year-on-year (y-o-y), the price of the reference food basket has significantly increased across all 14 governorates. Aleppo recorded the highest increase (up 131 percent) followed by Quneitra (up by 130 percent), while Idleb recorded the lowest increase (up 66 percent).

The gap between the highest and lowest average food basket prices increased by 10 percent from SYP 60,107 in July 2021 to SYP 66,360 in August 2021. The gap increased by 45 percent since August 2020 (Chart 1).

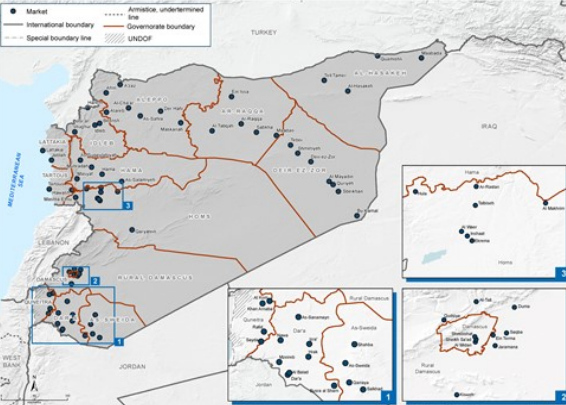
Figure 1: Food basket cost and changes, SYP

| Governorate    | Price August 2021 | 1 month change | 6 months changes | 12 months changes |
|----------------|-------------------|----------------|------------------|-------------------|
| Aleppo         | SYP 173,192       | 6%             | 20%              | 131%              |
| Damascus       | SYP 177,254       | 6%             | 44%              | 116%              |
| Dar'a          | SYP 178,231       | 4%             | 37%              | 114%              |
| Deir-ez-Zor    | SYP 162,698       | 12%            | 43%              | 124%              |
| Hama           | SYP 176,888       | 4%             | 31%              | 115%              |
| Al-Hasakeh     | SYP 130,727       | 4%             | 9%               | 69%               |
| Homs           | SYP 175,716       | 0%             | 29%              | 113%              |
| Idleb          | SYP 197,087       | 6%             | 12%              | 66%               |
| Lattakia       | SYP 177,309       | 0%             | 20%              | 100%              |
| Ar-Raqqa       | SYP 179,889       | 1%             | 36%              | 129%              |
| Rural Damascus | SYP 178,045       | 5%             | 44%              | 104%              |
| As-Sweida      | SYP 170,446       | 0%             | 26%              | 107%              |
| Tartous        | SYP 170,610       | 3%             | 23%              | 100%              |
| Quneitra       | SYP 182,784       | 2%             | 33%              | 130%              |
| Average        | SYP 173,634       | 4%             | 28%              | 107%              |

Chart 1: National min., max. and average food basket cost, SYP



Map 1: Location of markets monitored by WFP



1. The standard food basket is a group of essential food commodities. In Syria, the food basket is set at a group of dry goods providing 2,060 kcal a day for a family of five during a month. The basket includes 37 kg bread, 19 kg rice, 19 kg lentils, 5 kg of sugar, and 7 litres of vegetable oil.

# Bread Subsidy

## Bread\*

As a result of limited wheat availability in Syria, on 15 August, the Ministry of Internal Trade and Consumer Protection (MoITCP) announced a new mechanism for subsidised bread allocations through the smart card system. Quotas of subsidised bread bundles are to be provided by family size and not to exceed a specific amount per week<sup>2</sup> (see Table 1). The distribution of bread bundles will take place during all days of the week except for Friday (bakery's day off). Previously, bread bundles were distributed on a daily basis based on family size; one bundle per family of one or two people; two bundles per family of three or four people; three bundles per family of five or six people; and four bundles per family of seven people or more.

Table 1: New subsidised bread distribution mechanism via the smart card

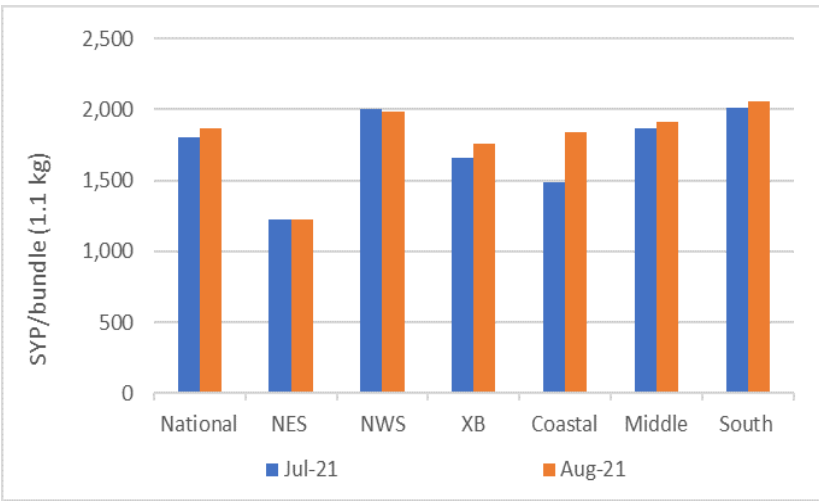
| Family size (number of people) | Number of subsidised bread bundles per week | Rate of subsidised bread bundle distribution per week                            |
|--------------------------------|---|--|
| 1                              | 4   | Up to 4 bundles per week   |
| 2                              | 6   | 1 bundle per day   |
| 3                              | 7   | 1 bundle per day except Thursdays when 2 bundles can be provided                 |
| 4                              | 10  | 2 bundles per day except on Sundays and Tuesdays when only one bundle is allowed |
| 5                              | 12  | 2 bundles per day  |
| 6                              | 14  | 2 bundles per day except for Thursday 4 bundles                                  |
| 7 - 8                          | 18  | 3 bundles per day  |
| 9 - 10 - 11                    | 24  | 4 bundles per day  |
| 12 - 13                        | 30  | 5 bundles per day  |
| 14 +                           | 36  | 6 bundles per day  |

Source: MoITCP<sup>2</sup>

The national average price of subsidized bread in August 2021 reached SYP 237/ bundle (up 14 percent m-o-m and 359 percent y-o-y). The Coastal region recorded the highest price of SYP 251/bundle (up five percent m-o-m), followed by the Middle region at SYP 250/ bundle (up 13 percent m-o-m). While the Southern region recorded the lowest price at SYP 224/bundle (up 14 percent m-o-m), followed by Northeast Syria at SYP 239/bundle (up 17 percent m-o-m).

The price of commercial bread increased by four percent m-o-m and by 88 percent y-o-y, reaching SYP 1,870/bundle. The Southern region recorded the highest price of SYP 2,054/bundle (up two percent m-o-m), followed by Northwest Syria at SYP 1,987/bundle (down one percent m-o-m). On the other hand, Northeast Syria recorded the lowest price at SYP 1,226/bundle (almost unchanged m-o-m), followed by the Cross-Border region at SYP 1,755/bundle (up six percent m-o-m) - Chart 2.

Chart 2: Retail Prices of Commercial Bread, SYP

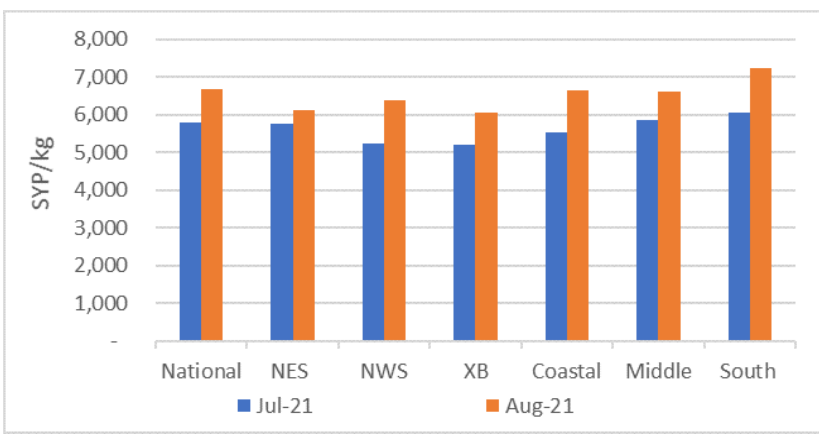


## The rise in chicken prices

Between July and August 2021, the price of chicken increased as a result of a number of factors<sup>3</sup>. The high price of chicken is largely linked to the high cost of inputs, especially feed, which have also forced a large number of small breeders to move away from raising chicks, resulting in supply chain disruptions across the market. In addition, the higher price of fuel leading to increased transport cost also played a key role in increasing food prices, including chicken.

M-o-m, the national average price of a whole clean chicken increased by 15 percent, reaching SYP 6,680/kg. Dar'a recorded the highest price at SYP 7,495/kg (up 17 percent m-o-m), while Ar-Raqqa recorded the lowest price at SYP 5,527/kg (down three percent m-o-m). Broken down by region, the Southern region recorded the highest price at SYP 7,246/kg (up 20 percent m-o-m), while the Cross-border region recorded the lowest price at SYP 6,062/kg (up 16 percent m-o-m) - Chart 3.

Chart 3: Retail Prices of Whole Chicken, SYP



Source: WFP

\*Starting from March 2021, WFP-monitored commercial bread has been switched from resold public bread bundles to commercial bread sold at shops. Prices for the past year have been adjusted to include commercial bread resold from shops. Moreover, all prices have been adjusted to reflect bread bundle size of 1.1 kg instead of 1.3 kg since November 2020.

<sup>2</sup> New mechanism for bread allocation: <http://www.sana.sy/?p=1454524>

<sup>3</sup> Increasing chicken prices: <https://www.facebook.com/1641823532798473/posts/2944245065889640/>

**Legend on regions of analysis:** 'Northwest'=Aleppo; 'Cross-border'=Idlib & Aleppo [A'zaz, Atarib & Afrin]; 'Coastal'=Lattakia & Tartous; 'Northeast'=Ar-Raqqqa, Al-Hasakeh & Deir-ez-Zor; 'Middle'=Hama, Homs and Idlib [Senjar]; 'South'=Damascus, Rural Damascus, Dar'a, As-Sweida & Quneitra.

## Staple cereals retail prices

### Wheat Flour

M-o-m, the national average retail price of wheat flour throughout Syria increased in August 2021 by two percent, reaching SYP 1,913/kg. The wheat flour price also increased by 26 percent compared to February 2021 and by 88 percent y-o-y. Damascus recorded the highest wheat flour price in August at SYP 2,096/kg (up 10 percent m-o-m), followed by Dar'a at SYP 2,088/kg (up four percent m-o-m). However, Idlib recorded the lowest price of SYP 1,569/kg (up one percent m-o-m), followed by Al-Hasakeh at SYP 1,695/kg (down three percent m-o-m).

Broken down by regions, Northwest Syria recorded the highest retail price at SYP 2,141/kg (down one percent m-o-m), followed by the Southern region at SYP 2,019/kg (up three percent m-o-m). While the Cross-border region recorded the lowest retail price at SYP 1,606/kg (up five percent m-o-m), followed by the Coastal region at SYP 1,852/kg (up five percent m-o-m) - Chart 4.

### Rice

The national average retail price of Egyptian white rice increased by two percent compared to July 2021 and by 66 percent y-o-y, reaching SYP 2,519/kg in August 2021. Quneitra recorded the highest price at SYP 2,973/kg (almost unchanged m-o-m), followed by Aleppo at SYP 2,801/kg (up seven percent m-o-m). However, Al-Hasakeh recorded the lowest price at SYP 2,150/kg (up two percent m-o-m), followed by Ar-Raqqqa at SYP 2,172 (up three percent m-o-m).

M-o-m, the Cross-border region recorded the highest price at SYP 2,733/kg (up eight percent m-o-m), followed by the Southern region at SYP 2,616/kg (up two percent m-o-m). Northeast Syria recorded the lowest average Egyptian white rice price by region at SYP 2,286/kg (up five percent m-o-m), followed by Northwest Syria at SYP 2,452/kg (up three percent m-o-m) - Chart 5.

### Bulgur

M-o-m, the national average retail price of bulgur increased by five percent at SYP 2,103/kg in August 2021, whereas y-o-y, the price of bulgur increased by 72 percent. Homs recorded the highest bulgur retail price at SYP 2,467/kg (up six percent m-o-m), followed by As-Sweida at SYP 2,410/kg (up five percent m-o-m). However, Idlib recorded the lowest price at SYP 1,679/kg (up nine percent m-o-m), followed by Al-Hasakeh at SYP 1,715/kg (down two percent m-o-m).

The Middle region of Syria recorded the highest average bulgur price by region at SYP 2,346/kg (up three percent m-o-m), followed by the Coastal region at SYP 2,283/kg (up eight percent m-o-m). On the other hand, the Cross-border region recorded the lowest average bulgur price at SYP 1,555/kg (up nine percent m-o-m), followed by Northeast Syria at SYP 1,887/kg (up six percent m-o-m) - Chart 6.

Chart 4: Retail Prices of Wheat Flour, SYP

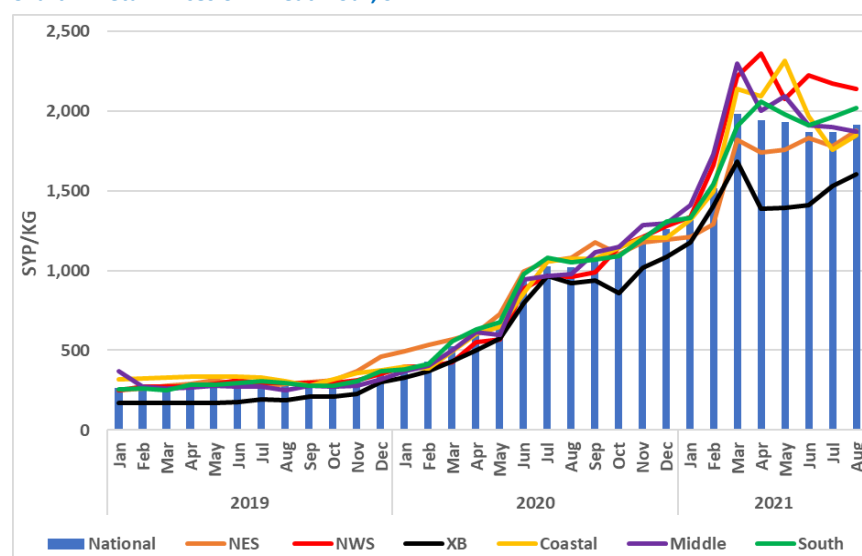


Chart 5: Retail Prices of Rice, SYP

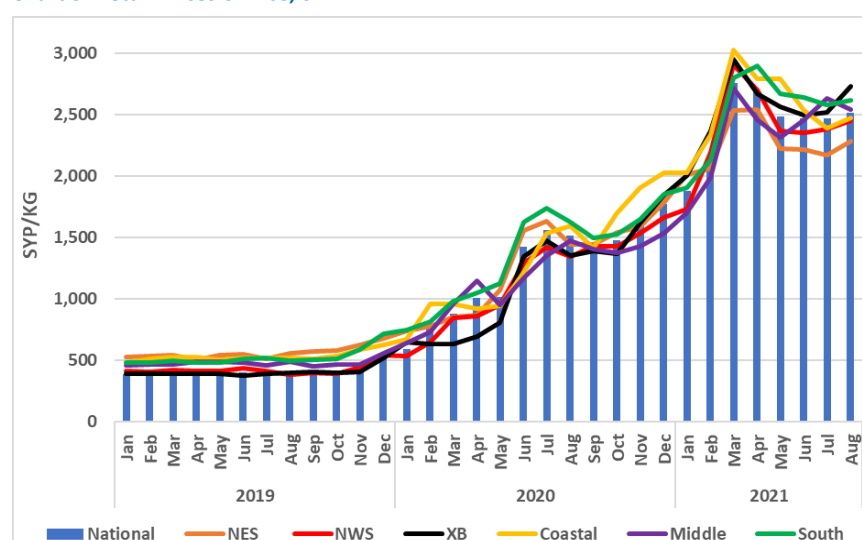
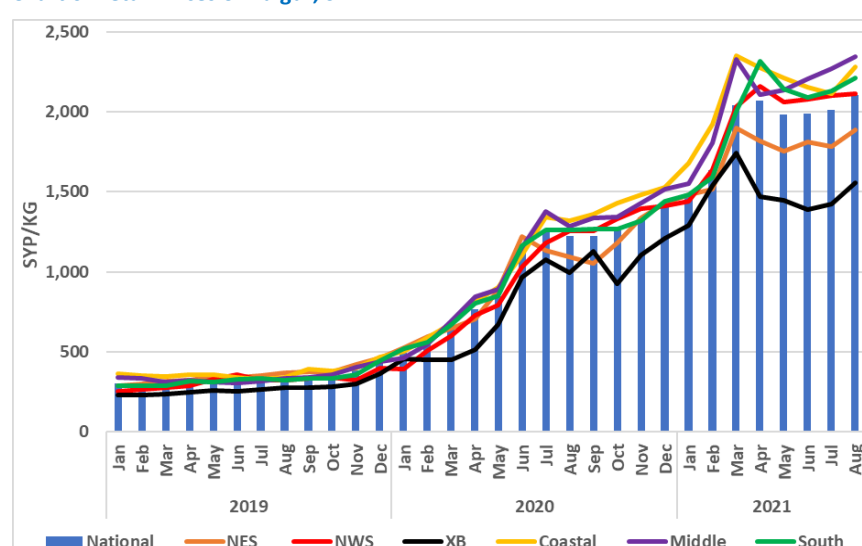


Chart 6: Retail Prices of Bulgur, SYP



Source: WFP Field Offices



### Exchange rate\*\*

In August 2021, the informal SYP/USD exchange rate depreciated m-o-m by four percent, reaching SYP 3,358/USD. Compared to a year ago, the Syrian pound weakened by 36 percent.

The highest informal exchange rate was reported in Damascus, Hama and Homs at SYP 3,412/USD (depreciated by four, five and five percent, respectively, m-o-m), followed by Rural Damascus at SYP 3,390/USD (depreciated by four percent m-o-m). On the other hand, the lowest rate was reported in Idleb at SYP 3,284/USD (depreciated by two percent m-o-m), followed by Deir-ez-Zor at SYP 3,334/USD (depreciated by four percent m-o-m) - Table 2.

Moreover, the formal exchange rate and the UN operational rate have both remained unchanged m-o-m at SYP 2,500/USD.

### Diesel

In August 2021, the formal national average price of diesel increased by 18 percent compared to July 2021 and by 155 percent y-o-y, reaching SYP 443/litre.

Moreover, the informal national average price of transport diesel increased by 10 percent m-o-m and by 379 percent since August 2020 reaching SYP 2,297/litre. The informal price remains four times higher than the formal price (SYP 443/litre) - Chart 7. Damascus recorded the highest informal price at SYP 3,011/litre (up 13 percent m-o-m), while Al-Hasakeh recorded the lowest price at SYP 229/litre (unchanged m-o-m).

Broken down by regions, Northwest Syria recorded the highest price of informal transport diesel at SYP 2,737/litre (up three percent m-o-m), while Northeast Syria recorded the lowest price at SYP 905/litre (up two percent m-o-m).

Moreover, the informal national average price of heating diesel increased by 16 percent m-o-m, reaching SYP 2,465/litre. Broken down by regions, Northwest Syria recorded the highest price at SYP 3,500/litre (up 75 percent m-o-m), while Northeast Syria recorded the lowest price at SYP 1,250/litre (up 11 percent m-o-m).

### Butane gas prices

In August 2021, the formal butane gas cylinder price (25,000 L) slightly increased by one percent m-o-m reaching SYP 4,114/refill. However, compared to August 2020, the price has increased by 50 percent.

Moreover, the informal national average price of one butane gas cylinder (25,000 L) increased by 31 percent m-o-m, reaching SYP 49,612/refill in August 2021. The price also increased compared to August 2020 by 321 percent. Dar'a recorded the highest price at SYP 85,171/refill (up 33 percent m-o-m), while Al-Hasakeh recorded the lowest price at SYP 11,808/refill (up 0.5 percent m-o-m).

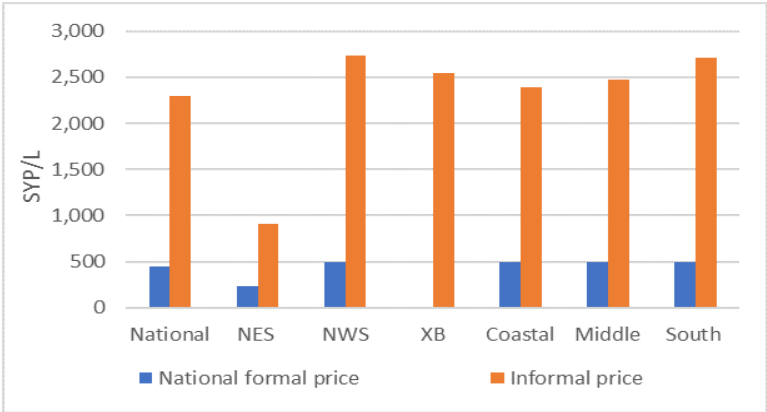
Broken down by regions, Northwest Syria recorded the highest informal butane gas refill price at SYP 60,783/refill (up 18 percent m-o-m), followed by the Middle region at SYP 59,404/refill (up 57 percent m-o-m). Northeast Syria recorded the lowest price at SYP 22,027/refill (up eight percent m-o-m), followed by the Cross-border region at SYP 36,345/refill (up two percent m-o-m) - Chart 8.

Table 2: Informal market exchange rate, 1 USD to SYP

| Governorate      | August 2021 | % change (m-o-m) | % change (y-o-y) |
|------------------|-------------|------------------|------------------|
| Aleppo           | 3,345       | -4%              | -37%             |
| Al-Hasakeh       | 3,335       | -4%              | -38%             |
| Ar-Raqqa         | 3,342       | -4%              | -38%             |
| As-Sweida        | 3,380       | -5%              | -35%             |
| Damascus         | 3,412       | -4%              | -35%             |
| Dar'a            | 3,356       | -5%              | -35%             |
| Deir-ez-Zor      | 3,334       | -4%              | -34%             |
| Hama             | 3,412       | -5%              | -37%             |
| Homs             | 3,412       | -5%              | -37%             |
| Idleb            | 3,284       | -2%              | -35%             |
| Lattakia         | 3,347       | -5%              | -36%             |
| Quneitra         | 3,379       | -6%              | -36%             |
| Rural Damascus   | 3,390       | -4%              | -35%             |
| Tartous          | 3,347       | -5%              | -36%             |
| National average | 3,358       | -4%              | -36%             |
| Official rate    | 2,500       | 0%               | -50%             |

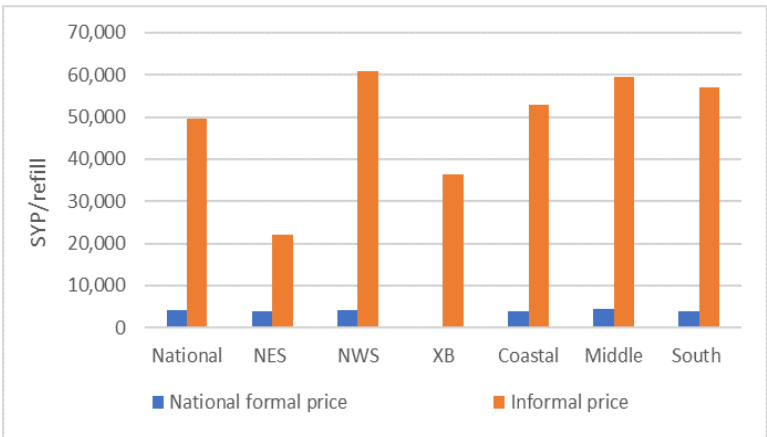
Source: WFP field offices

Chart 7: Formal and informal transport diesel prices, SYP\*\*\*



Source: WFP

Chart 8: Formal and informal butane gas cylinder prices, SYP\*\*\*



\*\*When measuring exchange rates, there are two quotations. The first is the direct quotation where the US dollar is the base of measuring the change in exchange rate against the local currency. The second one is the indirect quotation where the local currency is the base of measuring the change in the exchange rate against the US dollar. The change in the exchange rate used below reflects the indirect quotation (measuring how much has the Syrian pound improved (appreciated) or worsened (depreciated) against the US dollar).

\*\*\*No formal prices have been reported in the cross-border region because there is no subsidized diesel or butane gas in the region.

## Terms of Trade (ToT)<sup>2</sup>

### ToT between wage labour and wheat flour

The national average non-skilled labour wage, representing construction, off-loading and agricultural labour, was recorded at SYP 7,278/day (up three percent m-o-m) in August 2021. Moreover, the wage rate was 71 percent above its y-o-y level and 39 percent above levels recorded in February 2021 - Chart 9.

Damascus recorded the highest daily wage rate at SYP 10,667/day (up four percent m-o-m), while Deir-ez-Zor recorded the lowest daily wage rate at SYP 4,518/day (down seven percent m-o-m). Broken down by region, the Southern region recorded the highest wage rate of SYP 8,777/day (up 12 percent m-o-m), while Northwest Syria recorded the lowest wage rate of SYP 5,575/day (down six percent m-o-m).

The national average ToT between wheat flour and wage labour, a proxy indicator for purchasing power, increased by one percent between July and August 2021, reaching 3.81 kgs of wheat flour/daily wage compared to 3.76 kgs of wheat flour in July 2021.

The national average ToT between wheat flour and wage labour increased by 10 percent compared to February 2021 (six months ago), while it decreased by nine percent compared to August 2020. In other words, the national average daily wage of a non-skilled labourer could buy 3.8 kgs of wheat flour in August 2021 compared to 3.5 kgs in February 2021, and 4.2 kgs in August 2020.

Broken down by region, the Cross-border region recorded the highest ToT at 4.9 kgs (down one percent m-o-m), while Northwest Syria recorded the lowest ToT at 2.6 kgs (down five percent m-o-m) - Chart 10.

### ToT between sheep and wheat flour

The national average price of a two-year old alive male sheep increased by less than one percent m-o-m (up by 0.3 percent) and by 36 percent since August 2020, reaching SYP 515,448/sheep in August 2021 (Chart 11).

Homs recorded the highest average price of a two-year old alive male sheep at SYP 627,429/head (up three percent m-o-m), while Deir-ez-Zor recorded the lowest price at SYP 433,333/head (down three percent m-o-m).

Broken down by region, the Middle region in Syria recorded the highest average price across Syria at SYP 607,462/sheep (up six percent m-o-m), followed by the Coastal region at SYP 549,222/sheep (up 40 percent m-o-m). While Northeast Syria recorded the lowest price at SYP 452,995/sheep (down one percent m-o-m), followed by Northwest Syria at SYP 473,000/sheep (down 14 percent m-o-m).

In August 2021, the ToT between an alive two-year old male sheep and wheat flour was 269 kg/sheep (down two percent m-o-m). However, the ToT worsened by 28 percent since August 2020.

Broken down by region, the Middle region recorded the highest ToT at 325 kg/sheep (up eight percent m-o-m), followed by the Cross-border region at 303 kg/sheep (down 17 percent m-o-m). While Northwest Syria recorded the lowest ToT at 221 kg/sheep (down 13 percent m-o-m), followed by the Northeast Syria at 241 kg/sheep (down six percent m-o-m) - Chart 12.

Chart 9: Daily wage for unskilled labour, SYP

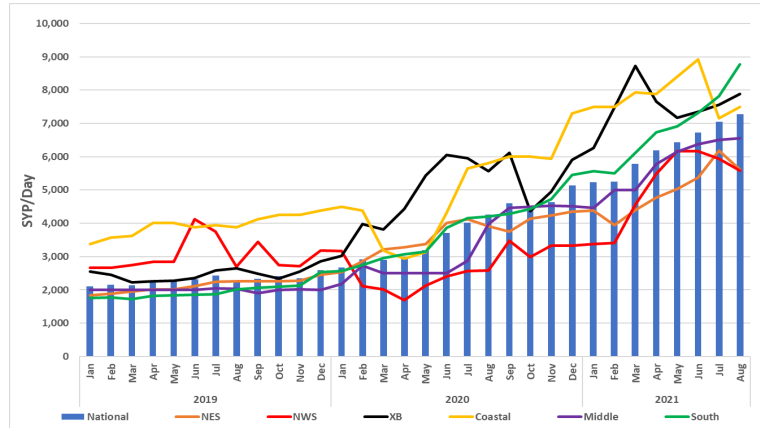


Chart 10: Terms of Trade (ToT) between wheat flour and wage rate

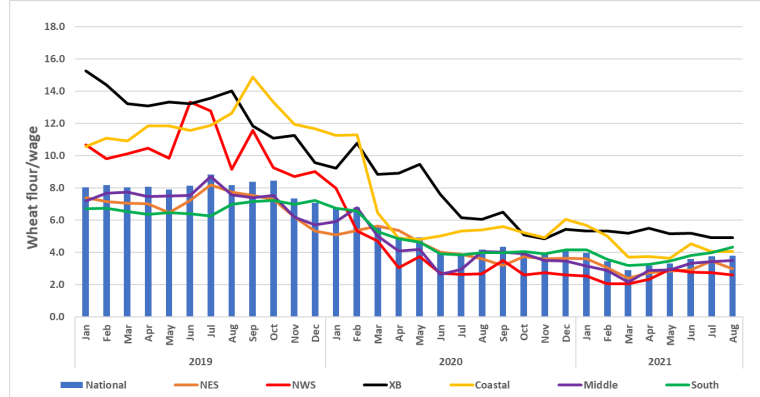


Chart 11: Price of livestock, SYP/one 2Y old sheep

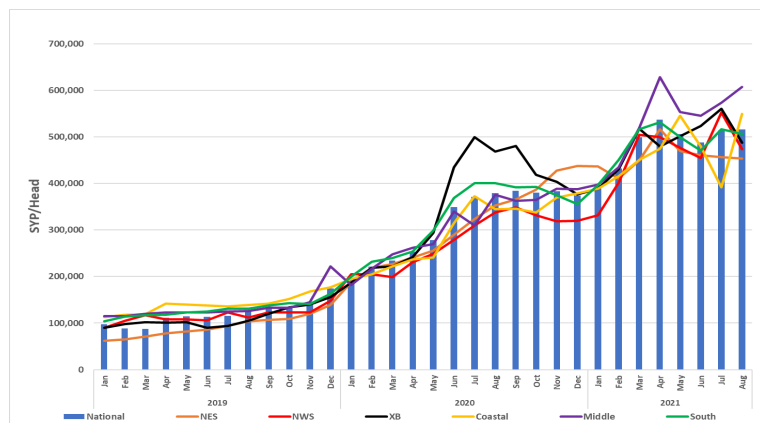
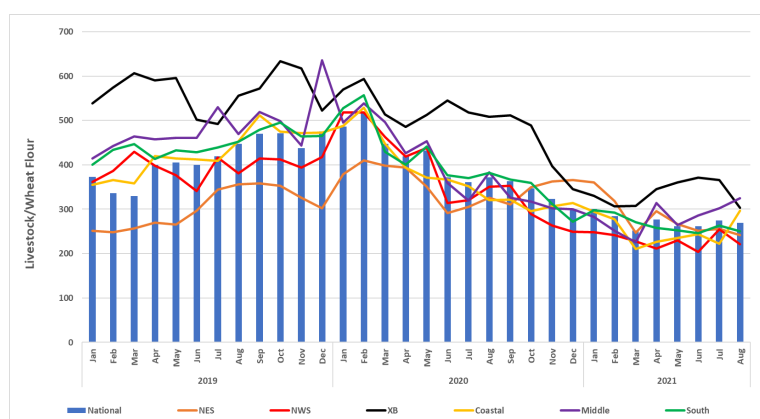


Chart 12: Terms of Trade (ToT) between wheat flour and the price of a 2 year old sheep



Source: WFP

2. The ToT are proxy indicators of the purchasing power of households that rely on livestock and/or casual labour as their main source of income for the purchase of cereals from local markets. ToT are important components of food security analysis. Changes in the terms of trade between wages/livestock and staple food commodities are indicative of the trends in purchasing power and the impact on the food security situation of households dependent on food purchases through income from daily wage labour and/or the sale of livestock.

**Table 3: Prices of key COVID-19 items, week-on-week in August 2021, SYP**

| National average       | Week 1 (SYP) | Week 2 (SYP) | Week 3 (SYP) | Week 4 (SYP) | Week 5 (SYP) | % Change (August W5 & W1) |
|------------------------|--------------|--------------|--------------|--------------|--------------|---------------------------|
| Surgeon mask           | 364          | 375          | 370          | 377          | 376          | 3%                        |
| Gloves (pair)          | 619          | 613          | 604          | 581          | 628          | 1%                        |
| Alcohol spray (200 ml) | 2,294        | 2,358        | 2,249        | 2,337        | 2,283        | -0.5%                     |
| Bleach bottle (L)      | 1,410        | 1,428        | 1,438        | 1,465        | 1,493        | 6%                        |
| Hand gel (50 ml)       | 1,101        | 1,098        | 1,088        | 1,152        | 1,147        | 4%                        |
| Soap bar               | 514          | 501          | 510          | 518          | 531          | 3%                        |

## COVID-19 NFIs

Between July and August 2021, the prices of all monitored COVID-19 items slightly increased. M-o-m, the price of surgeon masks and plastic gloves increased by four percent for each item, reaching SYP 372/mask and SYP 609/pair, respectively. Moreover, m-o-m, the price of hand gel, bleach and soap bars increased by three percent for all these items and by four percent for alcohol spray, reaching SYP 1,117/50 ml, SYP 1,447/litre, SYP 515/bar and SYP 2,304/200 ml, respectively - Table 3.

Compared to August 2020, the price of all COVID-19 items increased except for surgeon masks which decreased by 24 percent. The price of alcohol spray and plastic gloves increased by 45 and 50 percent, respectively. Moreover, the price of hand gel, soap bars and bleach increased by 10, 10 and 24 percent, respectively.

Additionally, compared to February 2020 (prior to the COVID-19 outbreak in Syria), the price of all items in August 2021 increased. For example the price of hand gel, alcohol spray and plastic gloves increased by 364, 451 and 809 percent, respectively. Also, the price of soap bars, bleach and surgeon masks increased by 245, 248, and 371 percent, respectively - Table 4.

## Key food-items retail prices

### Red Split Lentils

M-o-m, the national average retail price of red split lentils increased by five percent throughout Syria, reaching SYP 2,843/kg. The price of red split lentils increased by 41 percent since February 2021 (six months ago) and by 111 percent since August 2020.

Ar-Raqqa recorded the highest red split lentils price at SYP 3,967/kg (down one percent m-o-m), while Al-Hasakeh recorded the lowest price at SYP 1,957/kg (up eight percent m-o-m).

Broken down by region, Northwest Syria recorded the highest price at SYP 3,173/kg (up five percent m-o-m), followed by the Coastal region at SYP 2,922/kg (up six percent m-o-m). The Cross-border region recorded the lowest price of red split lentils at SYP 2,550/kg (up nine percent m-o-m), followed by Northeast Syria at SYP 2,631/kg (up six percent m-o-m) - Chart 13.

### Sugar

In August 2021, the national average retail price of sugar increased by 13 percent m-o-m, reaching SYP 2,318/kg. Moreover, the national average price has increased by 21 percent since February 2021 (six months ago) and by 95 percent since August 2020. Dar'a recorded the highest sugar price at SYP 2,446/kg (up 16 percent m-o-m), while Al-Hasakeh recorded the lowest price of SYP 1,852/kg (up five percent m-o-m).

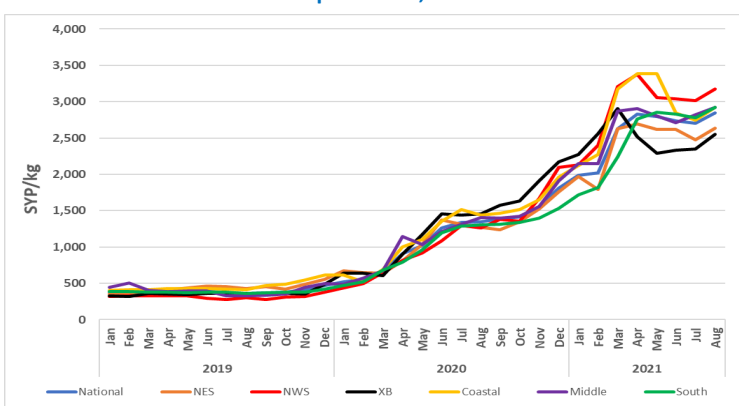
Broken down by region, Northwest Syria recorded the highest price of SYP 2,492/kg (up 17 percent m-o-m), followed by the Southern region at SYP 2,370/kg (up 14 percent m-o-m). The Cross-border region recorded the lowest price at SYP 2,131/kg (up seven percent m-o-m), followed by North-east Syria at SYP 2,272/kg (up 15 percent m-o-m) - Chart 14.

**Table 4: Monthly price changes of key COVID-19 items, SYP**

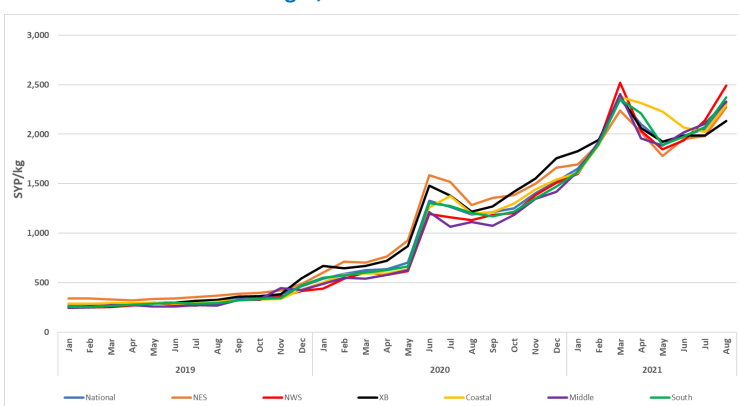
| National average       | Feb-20 (SYP) | Aug-21 (SYP) | % Change |
|------------------------|--------------|--------------|----------|
| Surgeon mask           | 79           | 372          | 371%     |
| Gloves (pair)          | 67           | 609          | 809%     |
| Alcohol spray (200 ml) | 418          | 2,304        | 451%     |
| Bleach bottle (L)      | 416          | 1,447        | 248%     |
| Hand gel (50 ml)       | 241          | 1,117        | 364%     |
| Soap bar               | 149          | 515          | 245%     |

Source: WFP

**Chart 13: Retail Prices of Red Split Lentils, SYP**



**Chart 14: Retail Prices of Sugar, SYP**



Source: WFP



Table 4. Market Price of Main Commodities in Syrian Pounds: August 2021

| Commodity   | Governorate    | Current Price                                      | Price change | Price change | Price change | Average Change | Average Change | Average Change | Commodity   | Governorate    | Current Price                                | Price change | Price change | Price change | Average Change | Average Change | Average Change |
|---|----------------|--|--------------|--------------|--------------|----------------|----------------|----------------|---|----------------|--|--------------|--------------|--------------|----------------|----------------|----------------|
|   |                |  | 1M (%)       | 6 M (%)      | 12 M (%)     | 1M             | 6 M            | 12 M           |   |                |  | 1M (%)       | 6 M (%)      | 12 M (%)     | 1M             | 6 M            | 12 M           |
| Bread Public (1.1 kg)   | Aleppo*        | 242  | 14           | 100          | 479          | ↗              | ↑              | ↑              | Dates (kg)  | Aleppo         | 4,709  | 9            | -1           | 39           | ↗              | ↓              | ↑              |
|   | Damascus       | 200  | 14           | 100          | 360          | ↗              | ↑              | ↑              |   | Damascus       | 5,533  | 1            | 19           | 54           | ↗              | ↗              | ↑              |
|   | Dar'a          | 242  | 17           | 92           | 351          | ↗              | ↑              | ↑              |   | Dar'a          | 5,050  | 4            | 21           | 39           | ↗              | ↗              | ↑              |
|   | Deir-ez-Zor    | 281  | 25           | 128          | 343          | ↗              | ↑              | ↑              |   | Deir-ez-Zor    | 3,217  | 22           | 12           | 32           | ↗              | ↗              | ↑              |
|   | Hama           | 250  | 13           | 150          | 491          | ↗              | ↑              | ↑              |   | Hama           | 5,000  | 11           | 9            | 24           | ↗              | ↗              | ↗              |
|   | Al-Hasakeh     | 200  | 14           | 100          | 373          | ↗              | ↑              | ↑              |   | Al-Hasakeh     | 4,358  | 6            | 22           | 72           | ↗              | ↗              | ↑              |
|   | Homs           | 248  | 13           | 148          | 486          | ↗              | ↑              | ↑              |   | Homs           | 4,010  | -0.5         | -13          | 0.2          | ↓              | ↓              | ↗              |
|   | Idleb*         | NA   | -            | -            | -            | ↔              | ↔              | ↔              |   | Idleb          | 4,098  | 0.1          | 2            | 61           | ↗              | ↗              | ↑              |
|   | Lattakia       | 251  | -5           | 146          | 197          | ↓              | ↑              | ↑              |   | Lattakia       | 4,921  | -19          | -6           | 22           | ↓              | ↓              | ↗              |
|   | Quneitra       | 250  | 11           | 79           | 491          | ↗              | ↑              | ↑              |   | Quneitra       | 4,495  | 10           | -1           | 31           | ↗              | ↓              | ↑              |
|   | Ar-Raqqa       | 212  | 5            | 102          | 189          | ↗              | ↑              | ↑              |   | Ar-Raqqa       | 4,018  | 2            | 10           | 38           | ↗              | ↗              | ↑              |
|   | Rural Damascus | 215  | 15           | 115          | 295          | ↗              | ↑              | ↑              |   | Rural Damascus | 5,067  | 3            | 8            | 39           | ↗              | ↗              | ↑              |
|   | As-Sweida      | 200  | 14           | 100          | 373          | ↗              | ↑              | ↑              |   | As-Sweida      | 5,387  | 3            | 8            | 56           | ↗              | ↗              | ↑              |
| Tartous   | 250            | 15   | 133          | 258          | ↗            | ↑              | ↑              | Tartous        | 5,391   | -3             | 11   | 50           | ↓            | ↗            | ↑              |                |                |
| Bread Shop (1.1 kg)   | Aleppo         | 1,871  | 7            | 12           | 159          | ↗              | ↗              | ↑              | Diesel (parallel market, L)                       | Aleppo         | 2,614  | 3            | 62           | 206          | ↗              | ↑              | ↑              |
|   | Damascus       | 2,111  | 6            | 20           | 60           | ↗              | ↗              | ↑              |   | Damascus       | 3,011  | 13           | 120          | 642          | ↗              | ↑              | ↑              |
|   | Dar'a          | 1,942  | 0.2          | 31           | 221          | ↗              | ↑              | ↑              |   | Dar'a          | 2,789  | 7            | 134          | 557          | ↗              | ↑              | ↑              |
|   | Deir-ez-Zor    | NA   | -            | -            | -            | ↔              | ↔              | ↔              |   | Deir-ez-Zor    | 1,332  | -12          | 61           | 384          | ↓              | ↑              | ↑              |
|   | Hama           | 1,993  | -1           | 21           | 127          | ↓              | ↗              | ↑              |   | Hama           | 2,692  | 23           | 130          | 573          | ↗              | ↑              | ↑              |
|   | Al-Hasakeh     | 1,041  | 3            | -13          | 42           | ↗              | ↓              | ↑              |   | Al-Hasakeh     | 229  | 0            | 13           | 53           | ↔              | ↗              | ↑              |
|   | Homs           | 1,856  | 5            | 12           | 111          | ↗              | ↗              | ↑              |   | Homs           | 2,266  | 16           | 92           | 466          | ↗              | ↑              | ↑              |
|   | Idleb          | 1,696  | 2            | 13           | 31           | ↗              | ↗              | ↑              |   | Idleb          | 2,655  | 8            | 19           | 116          | ↗              | ↗              | ↑              |
|   | Lattakia       | 2,320  | 25           | 102          | 287          | ↗              | ↑              | ↑              |   | Lattakia       | 1,949  | 4            | 69           | 395          | ↗              | ↑              | ↑              |
|   | Quneitra       | 2,093  | 5            | 6            | 17           | ↗              | ↗              | ↗              |   | Quneitra       | 2,568  | 11           | 123          | 596          | ↗              | ↑              | ↑              |
|   | Ar-Raqqa       | 1,595  | -3           | -9           | 190          | ↓              | ↓              | ↑              |   | Ar-Raqqa       | 1,155  | 30           | 76           | 373          | ↑              | ↑              | ↑              |
|   | Rural Damascus | 2,132  | 3            | 21           | 62           | ↗              | ↗              | ↑              |   | Rural Damascus | 2,683  | 11           | 93           | 577          | ↗              | ↑              | ↑              |
|   | As-Sweida      | 2,050  | -3           | 24           | 86           | ↓              | ↗              | ↑              |   | As-Sweida      | 2,540  | 9            | 95           | 430          | ↗              | ↑              | ↑              |
| Tartous   | 1,362          | 13   | 24           | 14           | ↗            | ↗              | ↗              | Tartous        | 2,840   | 25             | 144  | 621          | ↑            | ↑            | ↑              |                |                |
| Bulgur (kg)   | Aleppo         | 1,908  | 4            | 17           | 68           | ↗              | ↗              | ↑              | US Dollar exchange rate (parallel market, \$1)    | Aleppo         | 3,317  | -4           | -3           | -36          | ↓              | ↓              | ↓              |
|   | Damascus       | 2,121  | 5            | 33           | 60           | ↗              | ↑              | ↑              |   | Damascus       | 3,412  | -4           | -2           | -35          | ↓              | ↓              | ↓              |
|   | Dar'a          | 2,297  | 3            | 44           | 90           | ↗              | ↑              | ↑              |   | Dar'a          | 3,356  | -5           | -9           | -35          | ↓              | ↓              | ↓              |
|   | Deir-ez-Zor    | 2,015  | 19           | 35           | 148          | ↗              | ↑              | ↑              |   | Deir-ez-Zor    | 3,334  | -4           | 0.5          | -34          | ↓              | ↗              | ↓              |
|   | Hama           | 2,161  | -1           | 19           | 69           | ↓              | ↗              | ↑              |   | Hama           | 3,412  | -5           | -2           | -37          | ↓              | ↓              | ↓              |
|   | Al-Hasakeh     | 1,715  | -2           | 12           | 37           | ↓              | ↗              | ↑              |   | Al-Hasakeh     | 3,335  | -4           | -0.04        | -38          | ↓              | ↓              | ↓              |
|   | Homs           | 2,467  | 6            | 37           | 91           | ↗              | ↑              | ↑              |   | Homs           | 3,412  | -5           | -2           | -37          | ↓              | ↓              | ↓              |
|   | Idleb          | 1,679  | 9            | 14           | 66           | ↗              | ↗              | ↑              |   | Idleb          | 3,284  | -2           | -3           | -35          | ↓              | ↓              | ↓              |
|   | Lattakia       | 2,162  | 6            | 25           | 64           | ↗              | ↗              | ↑              |   | Lattakia       | 3,347  | -5           | -1           | -36          | ↓              | ↓              | ↓              |
|   | Quneitra       | 2,123  | 3            | 41           | 99           | ↗              | ↑              | ↑              |   | Quneitra       | 3,379  | -6           | -11          | -36          | ↓              | ↓              | ↓              |
|   | Ar-Raqqa       | 1,888  | -1           | 24           | 61           | ↓              | ↗              | ↑              |   | Ar-Raqqa       | 3,342  | -4           | -0.3         | -38          | ↓              | ↓              | ↓              |
|   | Rural Damascus | 2,094  | 4            | 33           | 55           | ↗              | ↑              | ↑              |   | Rural Damascus | 3,390  | -4           | -10          | -35          | ↓              | ↓              | ↓              |
|   | As-Sweida      | 2,410  | 5            | 41           | 72           | ↗              | ↑              | ↑              |   | As-Sweida      | 3,380  | -5           | -3           | -35          | ↓              | ↓              | ↓              |
| Tartous   | 2,403          | 10   | 14           | 81           | ↗            | ↗              | ↑              | Tartous        | 3,347   | -5             | -1   | -36          | ↓            | ↓            | ↓              |                |                |
| Butane Cylinder (parallel market, 25 kg)  | Aleppo         | 49,484   | 13           | 78           | 317          | ↗              | ↑              | ↑              | Eggs (carton)                                     | Aleppo         | 7,747  | 6            | 26           | 120          | ↗              | ↑              | ↑              |
|   | Damascus       | 32,867   | 15           | 64           | 121          | ↗              | ↑              | ↑              |   | Damascus       | 8,193  | -5           | 31           | 110          | ↓              | ↑              | ↑              |
|   | Dar'a          | 85,171   | 33           | 231          | 414          | ↑              | ↑              | ↑              |   | Dar'a          | 8,186  | -4           | 33           | 113          | ↓              | ↑              | ↑              |
|   | Deir-ez-Zor    | 27,411   | 23           | 15           | 174          | ↗              | ↗              | ↑              |   | Deir-ez-Zor    | 8,156  | 2            | 31           | 114          | ↗              | ↑              | ↑              |
|   | Hama           | 53,400   | 21           | 78           | 549          | ↗              | ↑              | ↑              |   | Hama           | 7,555  | -5           | 19           | 88           | ↓              | ↗              | ↑              |
|   | Al-Hasakeh     | 11,808   | 0.5          | 26           | 115          | ↗              | ↑              | ↑              |   | Al-Hasakeh     | 7,853  | 17           | 28           | 143          | ↗              | ↑              | ↑              |
|   | Homs           | 64,619   | 96           | 115          | 681          | ↑              | ↑              | ↑              |   | Homs           | 7,889  | -4           | 24           | 96           | ↓              | ↗              | ↑              |
|   | Idleb          | 40,041   | 5            | 18           | 130          | ↗              | ↗              | ↑              |   | Idleb          | 8,104  | 14           | 32           | 194          | ↗              | ↑              | ↑              |
|   | Lattakia       | 31,978   | 17           | 25           | 276          | ↗              | ↗              | ↑              |   | Lattakia       | 7,589  | -1           | 15           | 100          | ↓              | ↗              | ↑              |
|   | Quneitra       | 50,729   | 28           | 233          | 366          | ↑              | ↑              | ↑              |   | Quneitra       | 8,060  | -1           | 33           | 132          | ↓              | ↑              | ↑              |
|   | Ar-Raqqa       | 30,267   | 1            | 111          | 256          | ↗              | ↑              | ↑              |   | Ar-Raqqa       | 7,830  | 11           | 28           | 155          | ↗              | ↑              | ↑              |
|   | Rural Damascus | 41,255   | 25           | 107          | 168          | ↗              | ↑              | ↑              |   | Rural Damascus | 7,819  | 0.3          | 25           | 107          | ↗              | ↗              | ↑              |
|   | As-Sweida      | 58,917   | 50           | 150          | 230          | ↑              | ↑              | ↑              |   | As-Sweida      | 8,495  | -17          | 31           | 111          | ↓              | ↑              | ↑              |
| Tartous   | 77,000         | 88   | 157          | 833          | ↑            | ↑              | ↑              | Tartous        | 7,904   | -3             | 27   | 94           | ↓            | ↑            | ↑              |                |                |
| Cheese (kg)   | Aleppo         | 8,377  | 7            | 41           | 137          | ↗              | ↑              | ↑              | Eggplant (kg)                                     | Aleppo         | 718  | -1           | -51          | 129          | ↓              | ↓              | ↑              |
|   | Damascus       | 7,084  | 7            | 24           | 129          | ↗              | ↗              | ↑              |   | Damascus       | 994  | -24          | -24          | 118          | ↓              | ↓              | ↑              |
|   | Dar'a          | 7,066  | 6            | 43           | 102          | ↗              | ↑              | ↑              |   | Dar'a          | 679  | -3           | -51          | 151          | ↓              | ↓              | ↑              |
|   | Deir-ez-Zor    | 6,963  | 14           | 50           | 98           | ↗              | ↑              | ↑              |   | Deir-ez-Zor    | 614  | 70           | -55          | 182          | ↑              | ↓              | ↑              |
|   | Hama           | 7,793  | 9            | 51           | 96           | ↗              | ↑              | ↑              |   | Hama           | 713  | -7           | -55          | 118          | ↑              | ↓              | ↑              |
|   | Al-Hasakeh     | 5,667  | 1            | 7            | 89           | ↗              | ↗              | ↑              |   | Al-Hasakeh     | 812  | 4            | -45          | 107          | ↗              | ↓              | ↑              |
|   | Homs           | 6,660  | 4            | 29           | 66           | ↗              | ↑              | ↑              |   | Homs           | 878  | 9            | -45          | 174          | ↗              | ↓              | ↑              |
|   | Idleb          | 7,519  | 14           | 5            | 155          | ↓              | ↗              | ↑              |   | Idleb          | 755  | -12          | -65          | 67           | ↓              | ↓              | ↑              |
|   | Lattakia       | 8,922  | 5            | 28           | 97           | ↗              | ↑              | ↑              |   | Lattakia       | 633  | 0.3          | -53          | 88           | ↗              | ↓              | ↑              |
|   | Quneitra       | 6,422  | 3            | 33           | 40           | ↗              | ↑              | ↑              |   | Quneitra       | 700  | -8           | -40          | 216          | ↓              | ↓              | ↑              |
|   | Ar-Raqqa       | 6,780  | 5            | 49           | 113          | ↗              | ↑              | ↑              |   | Ar-Raqqa       | 799  | 53           | -45          | 100          | ↑              | ↓              | ↑              |
|   | Rural Damascus | 6,784  | 14           | 20           | 144          | ↗              | ↗              | ↑              |   | Rural Damascus | 795  | -5           | -38          | 94           | ↓              | ↓              | ↑              |
|   | As-Sweida      | 7,495  | 5            | 45           | 114          | ↗              | ↑              | ↑              |   | As-Sweida      | 457  | -29          | -69          | 146          | ↓              | ↓              | ↑              |
| Tartous   | 9,551          | 37   | 74           | 133          | ↑            | ↑              | ↑              | Tartous        | 994   | -20            | -27  | 184          | ↓            | ↓            | ↑              |                |                |
| Chickpeas (kg)  | Aleppo         | 2,296  | 7            | 12           | 113          | ↗              | ↗              | ↑              | Fish (tuna, canned) - 160 gm                      | Aleppo         | 2,211  | 12           | 18           | 103          | ↗              | ↗              | ↑              |
|   | Damascus       | 3,236  | 3            | 98           | 133          | ↗              | ↑              | ↑              |   | Damascus       | 2,709  | 14           | 25           | 24           | ↗              | ↗              | ↗              |
|   | Dar'a          | 3,061  | 6            | 64           | 137          | ↗              | ↑              | ↑              |   | Dar'a          | 2,451  | 2            | 18           | 59           | ↗              | ↗              | ↑              |
|   | Deir-ez-Zor    | 2,445  | 27           | 90           | 145          | ↑              | ↑              | ↑              |   | Deir-ez-Zor    | 2,446  | 19           | 46           | 106          | ↗              | ↑              | ↑              |
|   | Hama           | 3,467  | 9            | 56           | 128          | ↗              | ↑              | ↑              |   | Hama           | 2,695  | 7            | 4            | 47           | ↗              | ↗              | ↑              |
|   | Al-Hasakeh     | 2,057  | 10           | 51           | 27           | ↗              | ↑              | ↑              |   | Al-Hasakeh     | 2,198  | -1           | 15           | 19           | ↓              | ↗              | ↗              |
|   | Homs           | 3,170  | 3            | 42           | 107          | ↗              | ↑              | ↑              |   | Homs           | 2,669  | 7            | 3            | 44           | ↗              | ↗              | ↑              |
|   | Idleb          | 2,357  | 8            | 29           | 130          | ↗              | ↑              | ↑              |   | Idleb          | 2,106  | 2            | -0.1         | 108          | ↗              | ↓              | ↑              |
|   | Lattakia       | 3,578  | 6            | 54           | 163          | ↗              | ↑              | ↑              |   | Lattakia       | 2,702  | -8           | 10           | 60           | ↓              | ↗              | ↑              |
|   | Quneitra       | 3,141  | -6           | 87           | 188          | ↓              | ↑              | ↑              |   | Quneitra       | 2,508  | 6            | 20           | 53           | ↗              | ↗              | ↑              |
|   | Ar-Raqqa       | 3,707  | 4            | 97           | 161          | ↗              | ↑              | ↑              |   | Ar-Raqqa       | 2,293  | -5.0         | 31           | 39           | ↓              | ↑              | ↑              |
|   | Rural Damascus | 2,903  | 7            | 73           | 114          | ↗              | ↑              | ↑              |   | Rural Damascus | 2,560  | 3            | 15           | 30           | ↗              | ↗              | ↑              |
|   | As-Sweida      | 2,941  | 2            | 57           | 119          | ↗              | ↑              | ↑              |   | As-Sweida      | 2,528  | 0.3          | 14           | 60           | ↗              | ↗              | ↑              |
| Tartous   | 3,460          | 15   | 48           | 147          | ↗            | ↑              | ↑              | Tartous        | 1,956   | -16            | -21  | 8            | ↓            | ↓            | ↗              |                |                |
| Key:  | ↑              | Price increase equal to or greater than 25 percent |              |              |              |                |                |                | * Key for unskilled labor wage and exchange rate: | ↑              | Increase equal to or greater than 25 percent |              |              |              |                |                |                |
|   | ↗              | Price increase between 0.1 and 25 percent          |              |              |              |                |                |                |   | ↗              | Increase between 0.1 and 25 percent          |              |              |              |                |                |                |
|   | ↔              | No price change                                    |              |              |              |                |                |                |   | ↔              | No change                                    |              |              |              |                |                |                |
|   | ↓              | Price decrease below normal price fluctuation      |              |              |              |                |                |                |   | ↓              | Decrease below normal fluctuation            |              |              |              |                |                |                |
| * Bread (bakery) in Aleppo and Idleb represents subsidized bread in Government of Syria areas |                |  |              |              |              |                |                |                |   |                |  |              |              |              |                |                |                |



| Commodity              | Governorate    | Current Price | Price change 1M (%) | Price change 6 M (%) | Price change 12 M (%) | Average Change 1M | Average Change 6 M | Average Change 12 M | Commodity                | Governorate    | Current Price | Price change 1M (%) | Price change 6 M (%) | Price change 12 M (%) | Average Change 1M | Average Change 6 M | Average Change 12 M |
|------------------------|----------------|---------------|---------------------|----------------------|-----------------------|-------------------|--------------------|---------------------|--------------------------|----------------|---------------|---------------------|----------------------|-----------------------|-------------------|--------------------|---------------------|
| Iodised salt (kg)      | Aleppo         | 782           | 1                   | 25                   | 79                    | ↗                 | ↗                  | ↑                   | Sheep 2Y old Male (head) | Aleppo         | 479,929       | -12                 | 20                   | 23                    | ↓                 | ↗                  | ↗                   |
|                        | Damascus       | 633           | 45                  | 55                   | 262                   | ↑                 | ↑                  | ↑                   |                          | Damascus       | 546,000       | 5                   | 19                   | 15                    | ↗                 | ↗                  | ↗                   |
|                        | Dar'a          | 577           | -2                  | 46                   | 89                    | ↓                 | ↗                  | ↑                   |                          | Dar'a          | 519,571       | 2                   | 18                   | 56                    | ↗                 | ↗                  | ↑                   |
|                        | Deir-ez-Zor    | 475           | 63                  | 70                   | 307                   | ↑                 | ↑                  | ↑                   |                          | Deir-ez-Zor    | 433,333       | -3                  | 19                   | 7                     | ↓                 | ↗                  | ↗                   |
|                        | Hama           | 720           | -4                  | -10                  | -5                    | ↓                 | ↓                  | ↓                   |                          | Hama           | 575,000       | 10                  | 32                   | 53                    | ↗                 | ↑                  | ↑                   |
|                        | Al-Hasakeh     | 510           | -0.1                | 9                    | 30                    | ↓                 | ↗                  | ↑                   |                          | Al-Hasakeh     | 450,417       | 3                   | 8                    | 30                    | ↗                 | ↗                  | ↑                   |
|                        | Homs           | 906           | -0.3                | 13                   | 21                    | ↓                 | ↗                  | ↗                   |                          | Homs           | 627,429       | 3                   | 44                   | 67                    | ↗                 | ↑                  | ↑                   |
|                        | Idleb          | 508           | 12                  | -5                   | 179                   | ↗                 | ↓                  | ↑                   |                          | Idleb          | 514,209       | -11                 | 12                   | 9                     | ↓                 | ↗                  | ↗                   |
|                        | Lattakia       | 642           | -9                  | 1                    | 295                   | ↓                 | ↗                  | ↑                   |                          | Lattakia       | 530,556       | 39                  | 27                   | 51                    | ↑                 | ↑                  | ↑                   |
|                        | Quneitra       | 395           | 4                   | 1                    | 29                    | ↗                 | ↗                  | ↑                   |                          | Quneitra       | 490,950       | -12                 | 15                   | 26                    | ↓                 | ↗                  | ↑                   |
|                        | Ar-Raqqa       | 753           | -0.2                | 91                   | 116                   | ↓                 | ↑                  | ↑                   |                          | Ar-Raqqa       | 470,000       | -2                  | 0.3                  | 46                    | ↓                 | ↗                  | ↑                   |
|                        | Rural Damascus | 490           | 16                  | 15                   | 292                   | ↗                 | ↗                  | ↑                   |                          | Rural Damascus | 500,619       | -5                  | 9                    | 13                    | ↓                 | ↗                  | ↗                   |
|                        | As-Sweida      | 808           | -7                  | 113                  | 143                   | ↓                 | ↑                  | ↑                   |                          | As-Sweida      | 478,250       | 3                   | 1                    | 33                    | ↗                 | ↑                  | ↑                   |
|                        | Tartous        | 878           | -8                  | 10                   | 420                   | ↓                 | ↗                  | ↑                   |                          | Tartous        | 567,889       | 41                  | 38                   | 68                    | ↑                 | ↑                  | ↑                   |
| Red split lentils (kg) | Aleppo         | 2,820         | 5                   | 13                   | 113                   | ↗                 | ↗                  | ↑                   | Sugar (kg)               | Aleppo         | 2,296         | 14                  | 22                   | 100                   | ↗                 | ↗                  | ↑                   |
|                        | Damascus       | 3,140         | 3                   | 70                   | 117                   | ↗                 | ↑                  | ↑                   |                          | Damascus       | 2,440         | 19                  | 33                   | 107                   | ↗                 | ↑                  | ↑                   |
|                        | Dar'a          | 2,690         | 4                   | 80                   | 103                   | ↗                 | ↑                  | ↑                   |                          | Dar'a          | 2,446         | 16                  | 27                   | 123                   | ↗                 | ↑                  | ↑                   |
|                        | Deir-ez-Zor    | 2,319         | 20                  | 48                   | 137                   | ↗                 | ↑                  | ↑                   |                          | Deir-ez-Zor    | 2,444         | 17                  | 28                   | 76                    | ↗                 | ↑                  | ↑                   |
|                        | Hama           | 2,963         | 7                   | 39                   | 111                   | ↗                 | ↑                  | ↑                   |                          | Hama           | 2,399         | 13                  | 25                   | 115                   | ↗                 | ↑                  | ↑                   |
|                        | Al-Hasakeh     | 1,957         | 8                   | 3                    | 41                    | ↗                 | ↗                  | ↑                   |                          | Al-Hasakeh     | 1,852         | 5                   | -3                   | 50                    | ↗                 | ↓                  | ↑                   |
|                        | Homs           | 2,971         | 2                   | 38                   | 112                   | ↗                 | ↑                  | ↑                   |                          | Homs           | 2,272         | 10                  | 18                   | 105                   | ↗                 | ↗                  | ↑                   |
|                        | Idleb          | 2,640         | 9                   | 5                    | 76                    | ↗                 | ↗                  | ↑                   |                          | Idleb          | 2,241         | 6                   | 11                   | 78                    | ↗                 | ↗                  | ↑                   |
|                        | Lattakia       | 3,096         | 6                   | 35                   | 116                   | ↗                 | ↑                  | ↑                   |                          | Lattakia       | 2,384         | 9                   | 24                   | 105                   | ↗                 | ↗                  | ↑                   |
|                        | Quneitra       | 2,800         | 0.1                 | 48                   | 145                   | ↗                 | ↑                  | ↑                   |                          | Quneitra       | 2,350         | 14                  | 26                   | 109                   | ↗                 | ↑                  | ↑                   |
|                        | Ar-Raqqa       | 3,967         | -1                  | 94                   | 185                   | ↓                 | ↑                  | ↑                   |                          | Ar-Raqqa       | 2,367         | 17                  | 27                   | 91                    | ↗                 | ↑                  | ↑                   |
|                        | Rural Damascus | 3,218         | 12                  | 71                   | 147                   | ↗                 | ↑                  | ↑                   |                          | Rural Damascus | 2,249         | 10                  | 21                   | 63                    | ↗                 | ↗                  | ↑                   |
|                        | As-Sweida      | 2,674         | -4                  | 27                   | 93                    | ↓                 | ↑                  | ↑                   |                          | As-Sweida      | 2,416         | 16                  | 20                   | 117                   | ↗                 | ↗                  | ↑                   |
|                        | Tartous        | 2,748         | 6                   | 23                   | 90                    | ↗                 | ↗                  | ↑                   |                          | Tartous        | 2,211         | 17                  | 19                   | 80                    | ↗                 | ↗                  | ↑                   |
| Meat (beef, kg)        | Aleppo         | 22,117        | 6                   | 32                   | 83                    | ↗                 | ↑                  | ↑                   | Tomato (kg)              | Aleppo         | 819           | 42                  | -23                  | 182                   | ↑                 | ↓                  | ↑                   |
|                        | Damascus       | 21,878        | -1                  | 29                   | 61                    | ↓                 | ↑                  | ↑                   |                          | Damascus       | 986           | 18                  | 5                    | 230                   | ↗                 | ↗                  | ↑                   |
|                        | Dar'a          | 19,576        | 1                   | 29                   | 76                    | ↗                 | ↑                  | ↑                   |                          | Dar'a          | 746           | 26                  | -22                  | 222                   | ↑                 | ↓                  | ↑                   |
|                        | Deir-ez-Zor    | 16,875        | 3                   | 23                   | 40                    | ↗                 | ↗                  | ↑                   |                          | Deir-ez-Zor    | 955           | 49                  | -5                   | 210                   | ↑                 | ↓                  | ↑                   |
|                        | Hama           | 20,000        | 2                   | 14                   | 57                    | ↗                 | ↗                  | ↑                   |                          | Hama           | 1,000         | 42                  | -8                   | 197                   | ↑                 | ↓                  | ↑                   |
|                        | Al-Hasakeh     | 18,250        | 2                   | 25                   | 34                    | ↗                 | ↗                  | ↑                   |                          | Al-Hasakeh     | 910           | 59                  | -20                  | 143                   | ↑                 | ↓                  | ↑                   |
|                        | Homs           | 20,345        | 3                   | 17                   | 60                    | ↗                 | ↗                  | ↑                   |                          | Homs           | 1,001         | 42                  | -8                   | 185                   | ↑                 | ↓                  | ↑                   |
|                        | Idleb          | 19,858        | 1                   | 17                   | 51                    | ↗                 | ↗                  | ↑                   |                          | Idleb          | 1,481         | 10                  | 13                   | 265                   | ↗                 | ↗                  | ↑                   |
|                        | Lattakia       | 22,000        | -1                  | 28                   | 96                    | ↓                 | ↑                  | ↑                   |                          | Lattakia       | 984           | 11                  | -20                  | 160                   | ↗                 | ↓                  | ↑                   |
|                        | Quneitra       | 20,933        | 5                   | 47                   | 48                    | ↗                 | ↑                  | ↑                   |                          | Quneitra       | 777           | 22                  | -12                  | 225                   | ↗                 | ↓                  | ↑                   |
|                        | Ar-Raqqa       | 15,400        | -1                  | 31                   | 74                    | ↓                 | ↑                  | ↑                   |                          | Ar-Raqqa       | 971           | 91                  | -20                  | 102                   | ↑                 | ↓                  | ↑                   |
|                        | Rural Damascus | 21,652        | -39                 | 28                   | 69                    | ↓                 | ↑                  | ↑                   |                          | Rural Damascus | 934           | 10                  | 1                    | 197                   | ↗                 | ↗                  | ↑                   |
|                        | As-Sweida      | 20,000        | 0                   | 35                   | 91                    | ↔                 | ↑                  | ↑                   |                          | As-Sweida      | 822           | 7                   | -35                  | 252                   | ↗                 | ↓                  | ↑                   |
|                        | Tartous        | 23,800        | 34                  | 41                   | 108                   | ↑                 | ↑                  | ↑                   |                          | Tartous        | 1,264         | -37                 | -10                  | 232                   | ↓                 | ↓                  | ↑                   |
| White beans (kg)       | Aleppo         | 5,124         | 8                   | 6                    | 116                   | ↗                 | ↗                  | ↑                   | Unskilled Labor wage*    | Aleppo         | 6,439         | -1                  | 33                   | 60                    | ↓                 | ↑                  | ↑                   |
|                        | Damascus       | 6,413         | -2                  | 13                   | 71                    | ↓                 | ↗                  | ↑                   |                          | Damascus       | 10,667        | 4                   | 48                   | 70                    | ↗                 | ↑                  | ↑                   |
|                        | Dar'a          | 6,696         | -1                  | 9                    | 91                    | ↓                 | ↗                  | ↑                   |                          | Dar'a          | 6,781         | 8                   | 45                   | 94                    | ↗                 | ↑                  | ↑                   |
|                        | Deir-ez-Zor    | 6,203         | 9                   | 9                    | 201                   | ↗                 | ↗                  | ↑                   |                          | Deir-ez-Zor    | 4,518         | -7                  | 63                   | 78                    | ↓                 | ↑                  | ↑                   |
|                        | Hama           | 5,813         | 3                   | -9                   | 108                   | ↗                 | ↓                  | ↑                   |                          | Hama           | 6,747         | 0.2                 | 35                   | 68                    | ↗                 | ↑                  | ↑                   |
|                        | Al-Hasakeh     | 4,373         | 9                   | 9                    | 102                   | ↗                 | ↗                  | ↑                   |                          | Al-Hasakeh     | 6,158         | 13                  | 25                   | 27                    | ↗                 | ↗                  | ↑                   |
|                        | Homs           | 6,224         | 3                   | -3                   | 120                   | ↗                 | ↓                  | ↑                   |                          | Homs           | 6,671         | 1                   | 33                   | 68                    | ↗                 | ↑                  | ↑                   |
|                        | Idleb          | 5,085         | 4                   | 11                   | 233                   | ↗                 | ↗                  | ↑                   |                          | Idleb          | 7,421         | 4                   | -7                   | 43                    | ↗                 | ↓                  | ↑                   |
|                        | Lattakia       | 6,407         | 4                   | 3                    | 71                    | ↗                 | ↗                  | ↑                   |                          | Lattakia       | 9,211         | 27                  | 27                   | 54                    | ↑                 | ↑                  | ↑                   |
|                        | Quneitra       | 5,676         | 1                   | 56                   | 211                   | ↗                 | ↑                  | ↑                   |                          | Quneitra       | 7,750         | 5                   | 68                   | 129                   | ↗                 | ↑                  | ↑                   |
|                        | Ar-Raqqa       | 4,500         | 2                   | -12                  | 91                    | ↗                 | ↓                  | ↑                   |                          | Ar-Raqqa       | 6,707         | -20                 | 40                   | 59                    | ↓                 | ↑                  | ↑                   |
|                        | Rural Damascus | 6,401         | 5                   | 13                   | 145                   | ↗                 | ↗                  | ↑                   |                          | Rural Damascus | 9,986         | 4                   | 40                   | 106                   | ↗                 | ↑                  | ↑                   |
|                        | As-Sweida      | 6,500         | 5                   | -6                   | 319                   | ↗                 | ↓                  | ↑                   |                          | As-Sweida      | 7,067         | 8                   | 79                   | 183                   | ↗                 | ↑                  | ↑                   |
|                        | Tartous        | 6,210         | -8                  | 4                    | 145                   | ↓                 | ↗                  | ↑                   |                          | Tartous        | 5,767         | -18                 | -26                  | 3                     | ↓                 | ↓                  | ↑                   |
| Vegetable oil (L)      | Aleppo         | 6,683         | 3                   | 28                   | 158                   | ↗                 | ↑                  | ↑                   | Wheat Flour (kg)         | Aleppo         | 1,927         | 2                   | 29                   | 105                   | ↗                 | ↑                  | ↑                   |
|                        | Damascus       | 7,484         | 0.4                 | 28                   | 157                   | ↗                 | ↑                  | ↑                   |                          | Damascus       | 2,096         | 10                  | 36                   | 83                    | ↗                 | ↑                  | ↑                   |
|                        | Dar'a          | 7,711         | 2                   | 29                   | 176                   | ↗                 | ↑                  | ↑                   |                          | Dar'a          | 2,088         | 4                   | 33                   | 94                    | ↗                 | ↑                  | ↑                   |
|                        | Deir-ez-Zor    | 7,211         | 6                   | 40                   | 172                   | ↗                 | ↑                  | ↑                   |                          | Deir-ez-Zor    | 1,958         | 18                  | 48                   | 84                    | ↗                 | ↑                  | ↑                   |
|                        | Hama           | 7,448         | 0.3                 | 18                   | 153                   | ↗                 | ↗                  | ↑                   |                          | Hama           | 1,836         | -6                  | 6                    | 87                    | ↓                 | ↗                  | ↑                   |
|                        | Al-Hasakeh     | 5,245         | 1                   | 14                   | 131                   | ↗                 | ↗                  | ↑                   |                          | Al-Hasakeh     | 1,695         | -3                  | 31                   | 32                    | ↓                 | ↑                  | ↑                   |
|                        | Homs           | 7,377         | 0.3                 | 17                   | 150                   | ↗                 | ↗                  | ↑                   |                          | Homs           | 1,896         | 2                   | 10                   | 94                    | ↗                 | ↗                  | ↑                   |
|                        | Idleb          | 6,235         | 7                   | 43                   | 209                   | ↗                 | ↑                  | ↑                   |                          | Idleb          | 1,569         | 1                   | 4                    | 68                    | ↗                 | ↗                  | ↑                   |
|                        | Lattakia       | 7,093         | -1                  | 9                    | 141                   | ↓                 | ↗                  | ↑                   |                          | Lattakia       | 1,771         | -0.5                | 11                   | 75                    | ↓                 | ↗                  | ↑                   |
|                        | Quneitra       | 7,563         | 1                   | 30                   | 187                   | ↗                 | ↑                  | ↑                   |                          | Quneitra       | 1,861         | 1                   | 40                   | 63                    | ↗                 | ↑                  | ↑                   |
|                        | Ar-Raqqa       | 6,327         | 1                   | 27                   | 188                   | ↗                 | ↑                  | ↑                   |                          | Ar-Raqqa       | 2,000         | 0                   | 107                  | 109                   | ↔                 | ↑                  | ↑                   |
|                        | Rural Damascus | 7,570         | 0.4                 | 29                   | 146                   | ↗                 | ↑                  | ↑                   |                          | Rural Damascus | 1,965         | 1                   | 36                   | 111                   | ↗                 | ↑                  | ↑                   |
|                        | As-Sweida      | 7,614         | -1                  | 27                   | 166                   | ↓                 | ↑                  | ↑                   |                          | As-Sweida      | 2,055         | -0.1                | 14                   | 94                    | ↓                 | ↗                  | ↑                   |
|                        | Tartous        | 7,638         | 23                  | 31                   | 156                   | ↗                 | ↑                  | ↑                   |                          | Tartous        | 1,932         | 11                  | 39                   | 70                    | ↗                 | ↑                  | ↑                   |
| Parsley (packet)       | Aleppo         | 304           | 34                  | 86                   | 72                    | ↑                 | ↑                  | ↑                   | Pasta (spaghetti)        | Aleppo         | 3,741         | 1                   | 47                   | 179                   | ↗                 | ↑                  | ↑                   |
|                        | Damascus       | 271           | 30                  | 35                   | 204                   | ↑                 | ↑                  | ↑                   |                          | Damascus       | 3,260         | 1                   | 71                   | 117                   | ↗                 | ↑                  | ↑                   |
|                        | Dar'a          | 267           | 15                  | 54                   | 167                   | ↗                 | ↑                  | ↑                   |                          | Dar'a          | 3,277         | 2                   | 85                   | 138                   | ↗                 | ↑                  | ↑                   |
|                        | Deir-ez-Zor    | 219           | 27                  | 19                   | 251                   | ↑                 | ↗                  | ↑                   |                          | Deir-ez-Zor    | 2,966         | 6                   | 62                   | 218                   | ↗                 | ↑                  | ↑                   |
|                        | Hama           | 255           | 45                  | 28                   | 49                    | ↑                 | ↑                  | ↑                   |                          | Hama           | 3,420         | 0                   | 28                   | 87                    | ↔                 | ↑                  | ↑                   |
|                        | Al-Hasakeh     | 208           | 0                   | 0                    | 138                   | ↔                 | ↔                  | ↑                   |                          | Al-Hasakeh     | 1,182         | -5                  | -37                  | -18                   | ↓                 | ↓                  | ↓                   |
|                        | Homs           | 164           | -38                 | -18                  | -4                    | ↓                 | ↓                  | ↓                   |                          | Homs           | 4,107         | -1                  | 52                   | 125                   | ↓                 | ↑                  | ↑                   |
|                        | Idleb          | 424           | 74                  | 49                   | 46                    | ↑                 | ↓                  | ↑                   |                          | Idleb          | 2,242         | 3                   | 13                   | 123                   | ↗                 | ↗                  | ↑                   |
|                        | Lattakia       | 301           | 22                  | 85                   | 201                   | ↗                 | ↑                  | ↑                   |                          | Lattakia       | 3,220         | 20                  | 16                   | 109                   | ↗                 | ↗                  | ↑                   |
|                        | Quneitra       | 245           | 1                   | 43                   | 173                   | ↗                 | ↑                  | ↑                   |                          | Quneitra       | 3,133         | 4                   | 90                   | 174                   | ↗                 | ↑                  | ↑                   |
|                        | Ar-Raqqa       | 422           | 45                  | 168                  | 496                   | ↑                 | ↑                  | ↑                   |                          | Ar-Raqqa       | 1,704         | -0.3                | 10                   | -7                    | ↓                 | ↗                  | ↓                   |
|                        | Rural Damascus | 224           | 4                   | 14                   | 142                   |                   |                    |                     |                          |                |               |                     |                      |                       |                   |                    |                     |